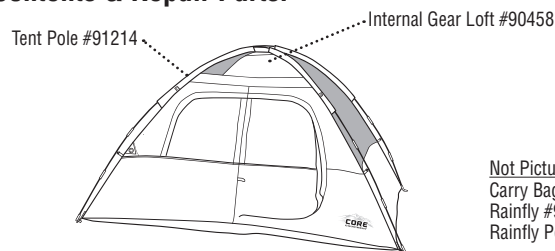


CORE™ 4 PERSON DOME TENT - 9 x 7

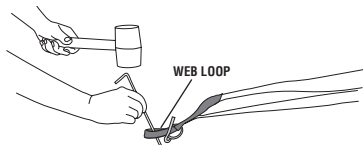
Two people can easily setup this tent in just a few minutes.

Contents & Repair Parts:



1 Prepare for Setup

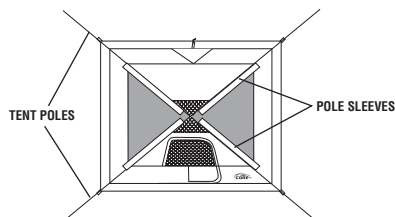
- Select a level site clear of rocks, branches, and other hard or sharp objects, to set up your tent.
- Remove all contents from bag.
- Assemble all poles and spread out tent.
- Stake down (4) corners of tent, going through web loops, at a 45 degree angle, using provided stakes.
- Floor of tent should be taut when staked properly.



2 Insert Tent Poles

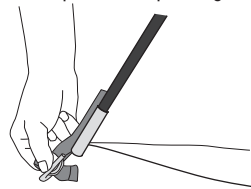
- Insert a tent pole through one pole sleeve located on top of tent. Repeat this process with the remaining tent pole and sleeve. Poles will cross each other at center. Tie center loops to connect tent poles.

CAUTION: Make sure the pole sleeve fabric is distributed evenly along pole and does not catch at pole joints. Failure to do so could put undue stress on poles causing breaks or tear the fabric.



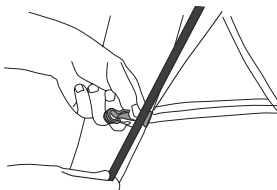
3 Secure Tent To Pin Rings

- After sliding poles through sleeves, flex poles into an arch and insert ends into metal pin on the pin ring at corners of tent.



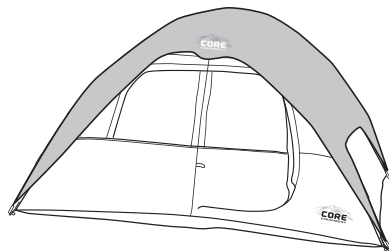
4 Secure Tent To Poles

- Locate plastic hooks on tent and clip them onto tent poles.



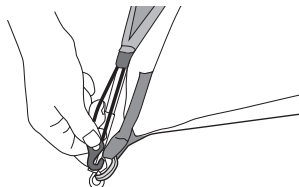
5 Attach Rainfly

- Drape rainfly over tent, placing "Core" logo over door.



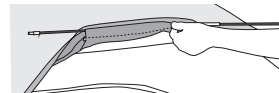
6 Secure Rainfly

- Connect each hook to the pin ring at corners of the tent.
- Attach (2) hook-and-loop tabs on the underside of the rainfly to each pole.



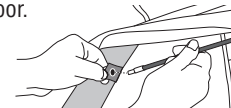
7 Insert Rainfly Pole

- Insert rainfly pole into sleeve located on underside of rainfly above door of tent.



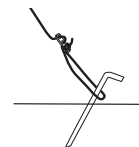
8 Attach Rainfly Pole

- Insert each end of rainfly pole into grommet located on side of tent above door.



9 Secure Ground Vents and Guylines

- Locate guylines attached to the rainfly.
- Stake out each guyline at a 45 degree angle.
- Tighten guylines as needed by adjusting the slider up the cord.
- Stake out ground vent on back side of tent (see "air intake" graphics).
- To install the gear loft, attach its S-hooks to the fabric loops inside of tent ceiling.
- Small lights can be hung from hooks on gear loft.



TAKE DOWN INSTRUCTIONS:

- Remove gear loft from inside of tent.
- Remove stakes from guylines and ground vents. Store in stake bag.
- Remove rainfly pole from grommets above door on tent then slide out of rainfly sleeve.
- Remove rainfly hook from each pin ring at corners of tent.
- Unfasten hook-and-loop tabs on underside of the rainfly from poles.
- Remove rainfly. Fold rainfly to length of carry bag and set aside.
- Remove end of tent pole from the pin ring at each corner of the tent and allow tent to lay flat.
- Remove the tent poles by carefully pushing them through the sleeves away from the end at which you are standing.
- Disassemble all poles and place in pole bag.
- Remove remaining stakes. Store in stake bag.
- Fold tent lengthwise 2-3 times. Then, lay bag of poles on short edge of tent, and roll tent around poles.
- Store in carry bag with rainfly and bag of stakes.

(continued on other side)

FREQUENTLY ASKED QUESTIONS:

- **Are replacement parts available?** Yes, just call Customer Service at 1-888-775-5628 for replacement parts. All parts can be replaced.
- **How do I get everything back in the bag?** The trick is to take your time and remove all the air. Use the weight of the poles to roll the tent on the ground and force air out. The tent components fit in the bag, it's the air that doesn't.
- **What is the air intake?** The air intake is a ground vent, designed to help with air flow throughout the tent, keep the tent cooler in warm weather, and prevent condensation. It can be staked shut in colder weather.
- **How to clean the tent?** Clean the tent with a soft sponge, a mild soap and tepid water. Be sure to scrub gently and remove all soap. Let dry in sunlight, which also naturally cleans the tent.
- **What is the wall plug symbol?** That is a port for an electrical cord to access your tent. The electrical cord can be used on a campsite with power or with a generator outside your tent. It closes fully when not in use.
- **Where does the gear loft go?** It hangs at the top of the inside of the tent. There are four hooks sewn onto the corners of the gear loft that attach to four loops sewn into the tent.
- **Can the tent be used in the rain?** Absolutely. The tent and rainfly have a waterproof treatment, and the seams have been sealed with waterproof tape at the factory.
- **How many seasons is this tent?** This is a 2-3 season tent, not recommended for use in severe weather conditions.
- **What are the dimensions of the tent?** The tent is 9' x 7' x 54" (274 cm x 213 cm x 137 cm).

WARNINGS & CAUTIONS:

⚠ WARNING: KEEP ALL FLAME AND HEAT SOURCES AWAY FROM THIS TENT FABRIC

This tent is made of flame-resistant fabric which meets CPAI-84 specifications. **IT IS NOT FIRE-PROOF.** The fabric will burn if left in continuous contact with any flame source. The application of any foreign substance to the product fabric may render the flame-resistant properties ineffective.

DO NOT use fuel burning devices inside or near tent materials.

DO NOT permit children to light matches, operate burning appliances, or handle any flame sources in or near the tent.

- Do not smoke, use matches, candles or open flames of any kind in or near the tent.
- Do not refuel lanterns, stoves or heaters inside tent.
- Do not cook inside tent.
- Do not store flammable liquids inside tent.

⚠ WARNING: Keep clear of overhead power lines.

- Do not set up your tent under trees because of potential lightning strikes or falling tree limbs in inclement weather.
- For best results in windy conditions, position narrow end of tent into the wind.
- Secure with all stakes and guylines provided to prevent property damage or personal injury.
- Under certain conditions (cold weather, high humidity, etc.) condensation will form on the inside of your tent. Condensation is caused by water vapor from your breath, perspiration, or any wet clothing inside the tent. It is **NOT LEAKAGE** through the tent fabric. It can be minimized by removing wet clothing from your tent and by providing good ventilation through the tent.
- Never store tent, even for a short period of time, without drying it thoroughly and brushing off caked dirt. Do not pack stakes inside your tent. Use a separate storage bag.
- **STAKES SHOULD BE REMOVED BY PULLING ON THE STAKE ITSELF. NEVER PULL ON THE TENT TO REMOVE STAKE.**
- Do not leave your tent set-up for weeks at a time. Be aware that exposure to ultraviolet rays from the sun can seriously damage material and/or cause it to become discolored.



DO NOT SPRAY

IMPORTANT:

THE ORIGINAL FIRE RETARDENT AND WATER REPELLENT PROTECTIVE COATINGS MAY BE COMPROMISED IF SPRAYS OR OTHER CHEMICAL TREATMENTS ARE USED ON THE TENT. FABRIC HAS BEEN FACTORY TREATED. IT IS HIGHLY WATER-REPELLANT; HOWEVER, IT IS NOT WATERPROOF. ALL TENTS CAN EXPERIENCE SEAM LEAKAGE DURING WET WEATHER. IF YOU WANT ADDITIONAL MOISTURE PROTECTION, TRY A SEAM SEALING COMPOUND ONLY; STRICTLY FOLLOW THE MANUFACTURER'S DIRECTIONS. IT IS RECOMMENDED THAT YOU SEAL THE TENT DURING THE INITIAL SETUP AS WELL AS PRIOR TO EACH CAMPING SEASON. SEAM SEALER COMPOUNDS CAN BE PURCHASED AT YOUR LOCAL CAMPING PRODUCTS OUTLET. FOR MISSING PARTS CALL 1-888-775-5628.

PLEASE DO NOT RETURN THIS PRODUCT TO THE RETAIL STORE.

1-YEAR LIMITED WARRANTY:

Elevate LLC warrants for a period of 1 year from the original date of purchase, this product against any defects in materials or workmanship. At its discretion, Elevate LLC may provide replacement parts to original purchaser. Original receipt or proof of purchase as well as proof of defect is required. Elevate LLC will not be responsible for shipping costs incurred outside the continental USA. Warranty is valid for the original purchaser one year from the date of purchase and is not transferable. This Warranty does not cover any product purchased through non authorized dealers and/or online auction websites.

This Warranty Does Not Cover:

This 1-Year Limited Warranty does NOT cover normal wear and tear, abuse or misuse of this product including damage from inclement weather conditions, such as wind, rain, or hail. In case of inclement weather remove all valuables and persons and seek appropriate shelter. Under no circumstances will Elevate LLC be liable or responsible for any incidental or consequential damages.

This product is designed and intended for Recreational use only. Prolonged exposure to UV rays will cause any fabric to fade and deteriorate and is NOT covered by this 1-Year Limited Warranty.

All replacement products or parts will assume the remaining warranty of the original product. This warranty gives you specific legal rights. You may also have other rights which vary from state to state.

To Obtain Warranty Service

Call Toll Free 1-888-775-5628 for warranty service, repair parts, or product questions. Mon-Fri, 8:00 a.m. – 5:00 p.m. Central Time.

NOTICE: DO NOT RETURN PRODUCT TO RETAIL STORE.

Elevate LLC
Overland Park, KS 66221

Made in Bangladesh • Printed in Bangladesh

Revised 07/17/18
Rev A