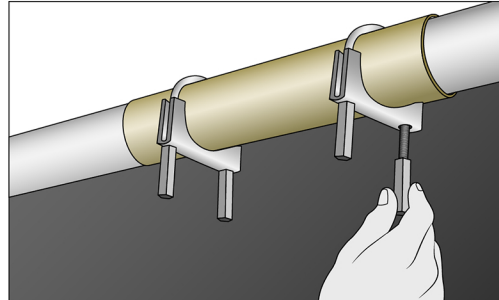


Uneekor Frame Mount Instructions

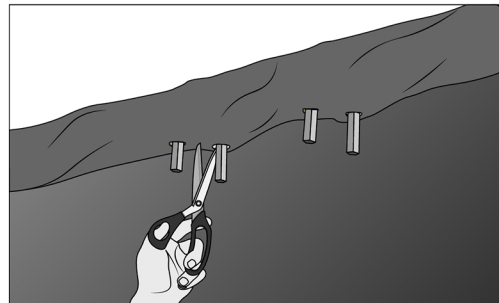
Step 1

After completing the assembly of your Pro Golf Enclosure, uninstall the fabric flap covering the front or crossbar ceiling pipe and install the U-Bolt, U-Bolt Clamp, and Coupling Nut over the pipe.



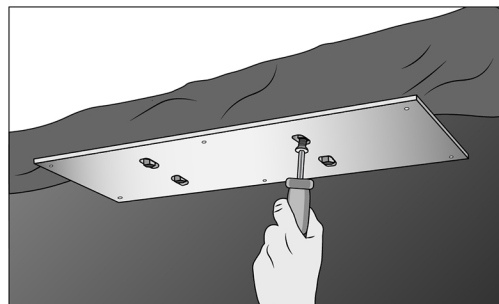
Step 2

Using sharp scissors or a utility knife, cut a slit in the fabric of the flap that aligns with the mount hardware. Be sure your cut does not cross into the finished edge for the flap material. Close the flap around the pipe.



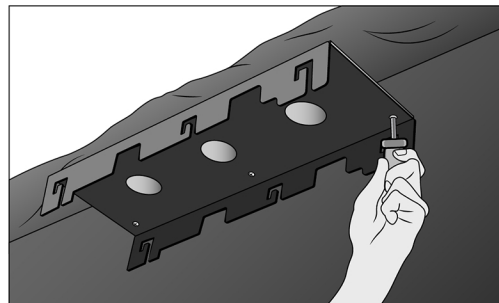
Step 3

Secure the base plate to the clamps with the provided screws.



Step 4

Secure the launch monitor mount to the base plate.



Step 5

Hang the launch monitor from the mount as described in the instructions and make final adjustments as necessary.

