

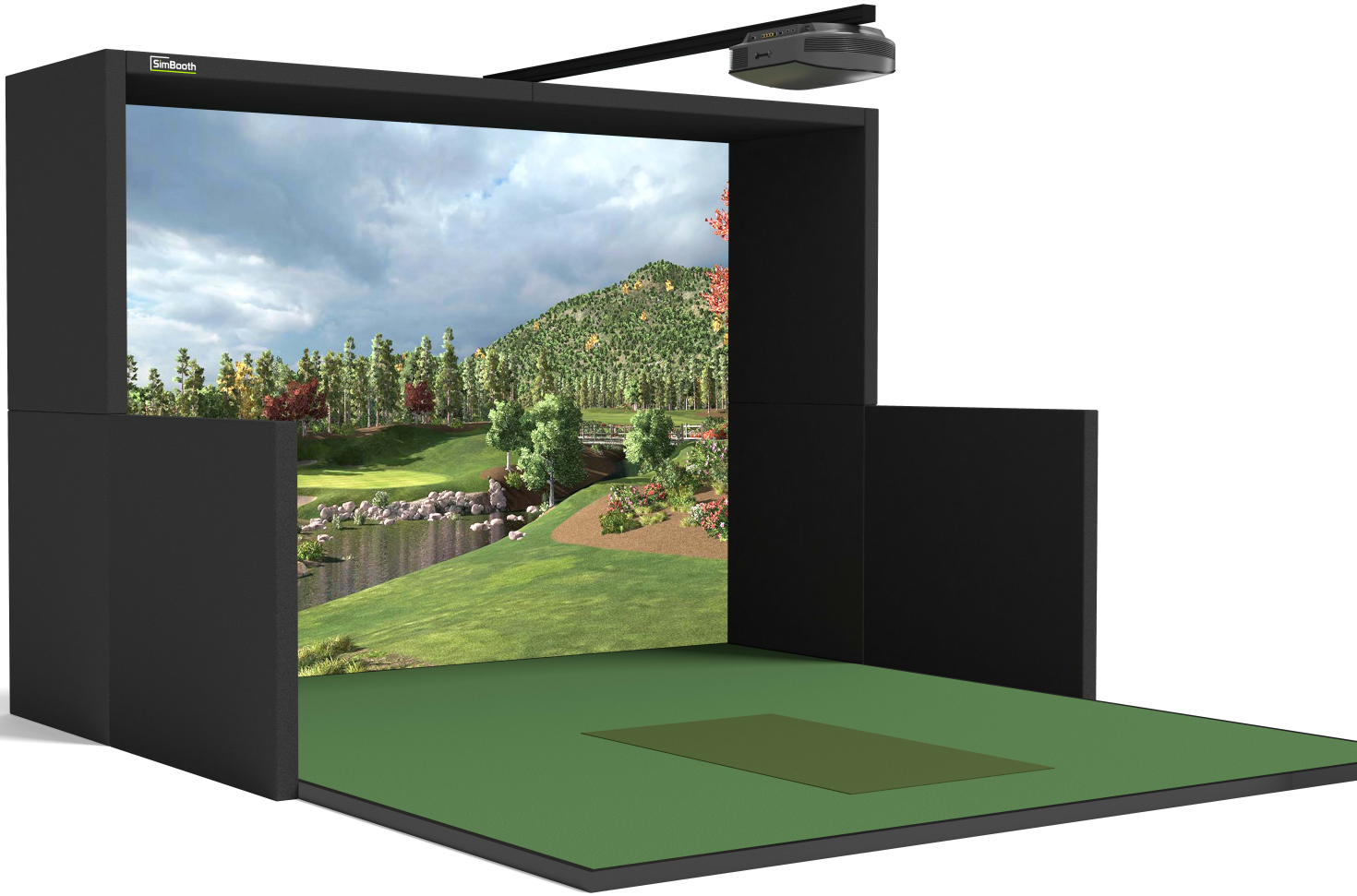


**INSTALLATION GUIDE**  
SIMBOOTH 1

# TABLE OF CONTENTS

## INSTALLATION

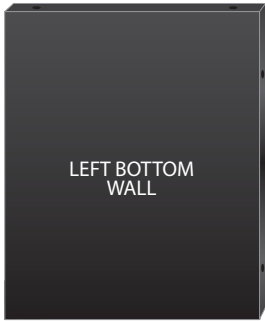
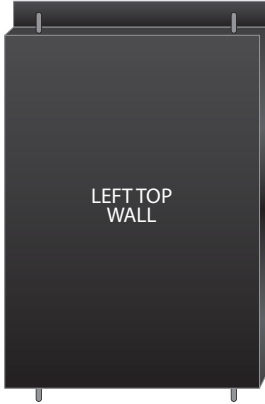
Parts list .....	3-4
Structure assembly .....	5-7
Floor installation .....	8
Optional (Half-wall, rafter and projector) .....	9



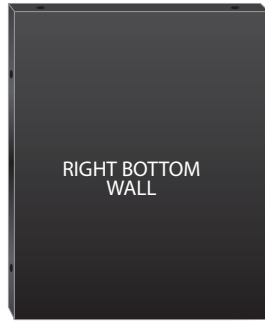
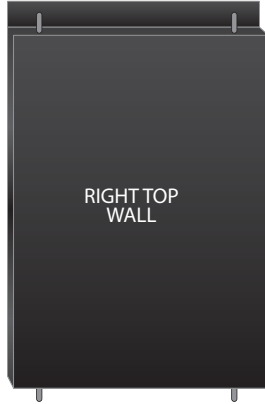
# PARTS LIST

## WALL PANELS

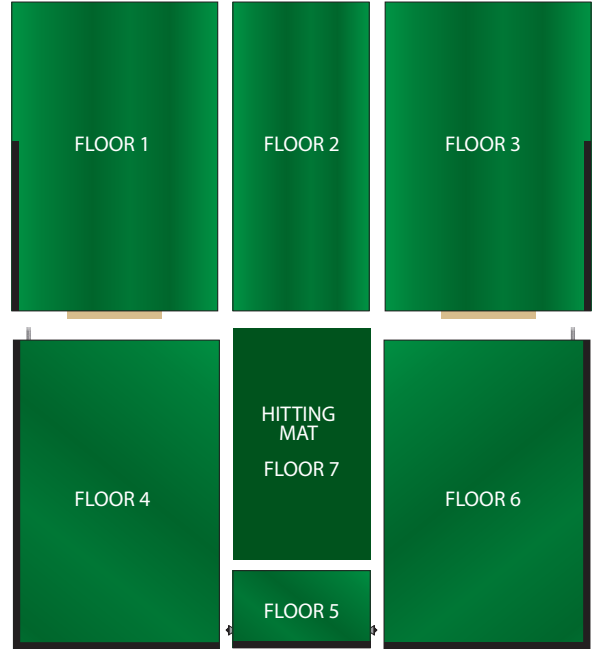
Left wall



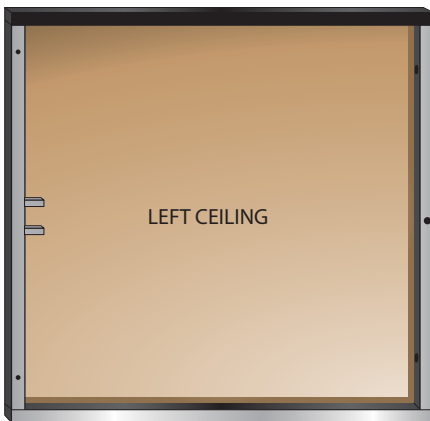
Right wall



## FLOOR PANELS

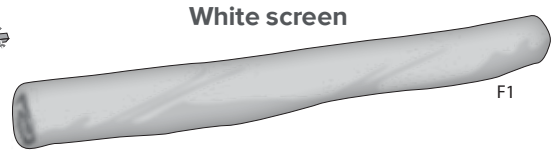
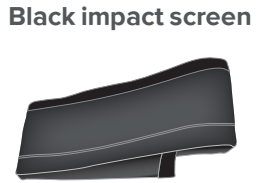
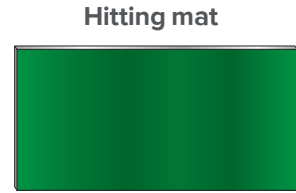
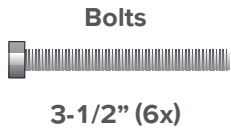


## CEILING PANELS



# PARTS LIST

## ACCESSORIES

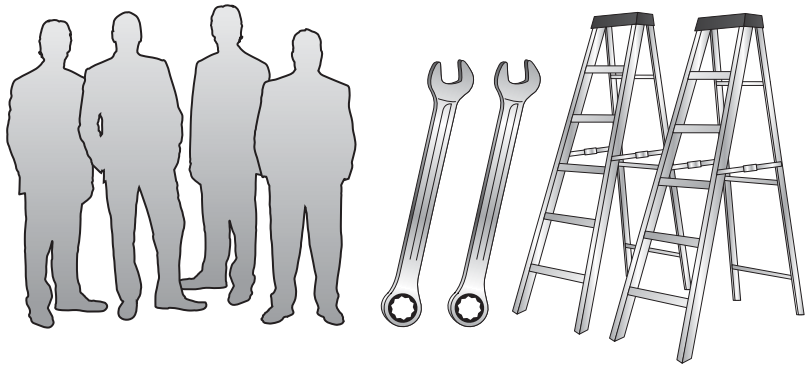


## OPTIONAL



**BEFORE STARTING**

You will need four people, two ladders, and two 1/2" wrenches.



**1**

Fix the left top wall to the left ceiling with the nuts.



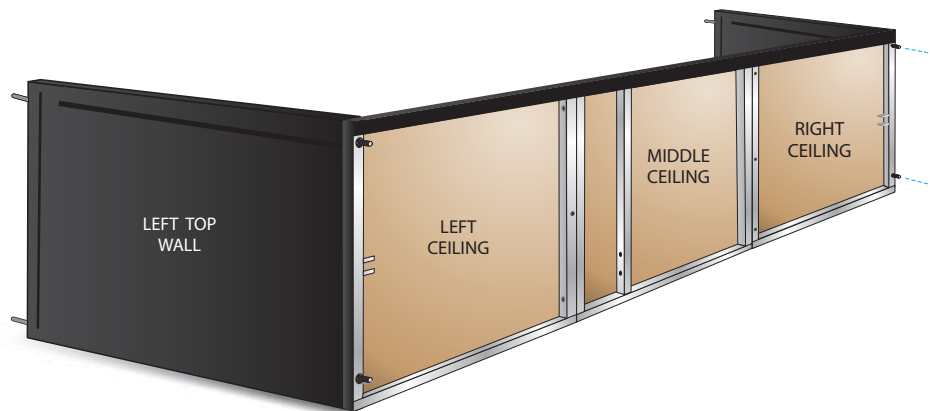
**2**

Using the nuts, fix the middle ceiling to the left ceiling, then fix the right ceiling to the middle ceiling.



3

Using the nuts, fix the right ceiling to the right top wall.



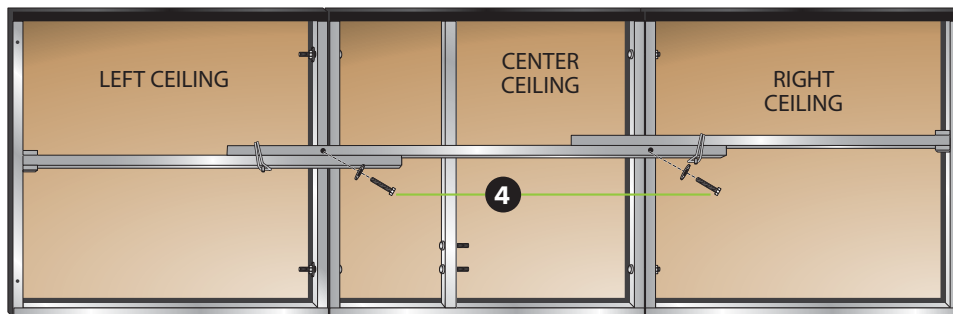
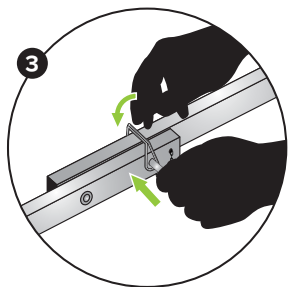
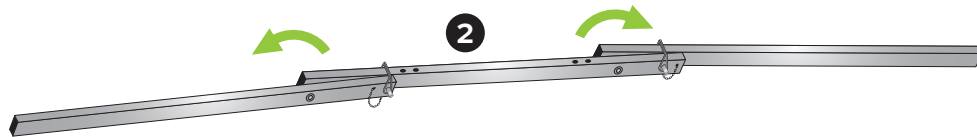
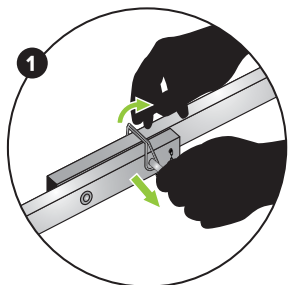
4

Fix the bottom wall panels to the top wall panels with the nuts by removing the bottom wall covers (Velcro).



5

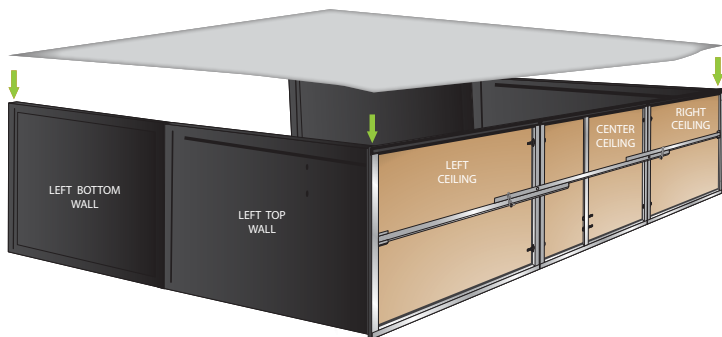
Assemble the ceiling truss with bolts and security pins.



IT IS IMPORTANT TO COMPLETE THIS STEP BEFORE LIFTING THE STRUCTURE.

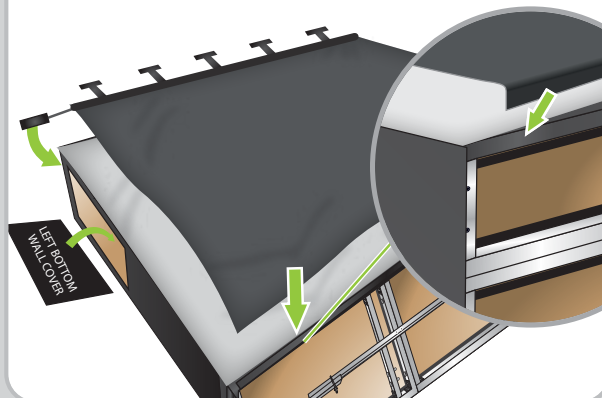
6

Attach the white screen to the structure.



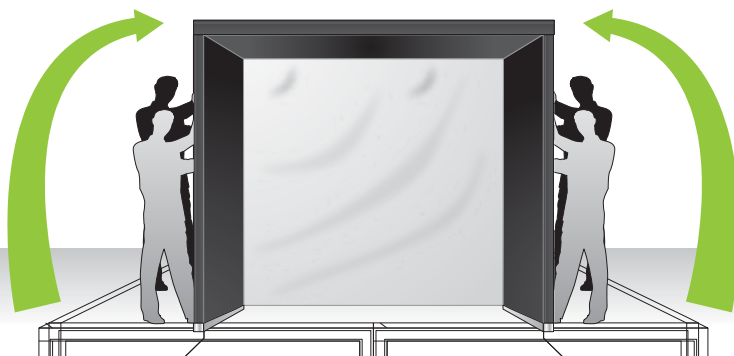
7

Attach the black impact netting over the white screen. Make sure it is attached to the top Velcro on the ceiling panels and that the bottom doesn't rest on the floor.



8

Lift the structure with four people.

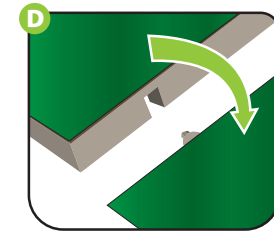
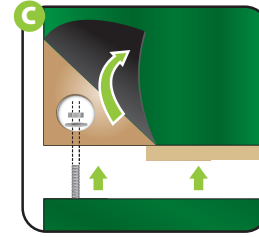
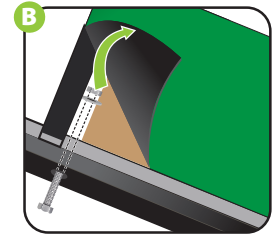
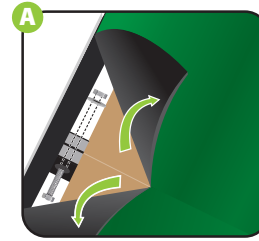
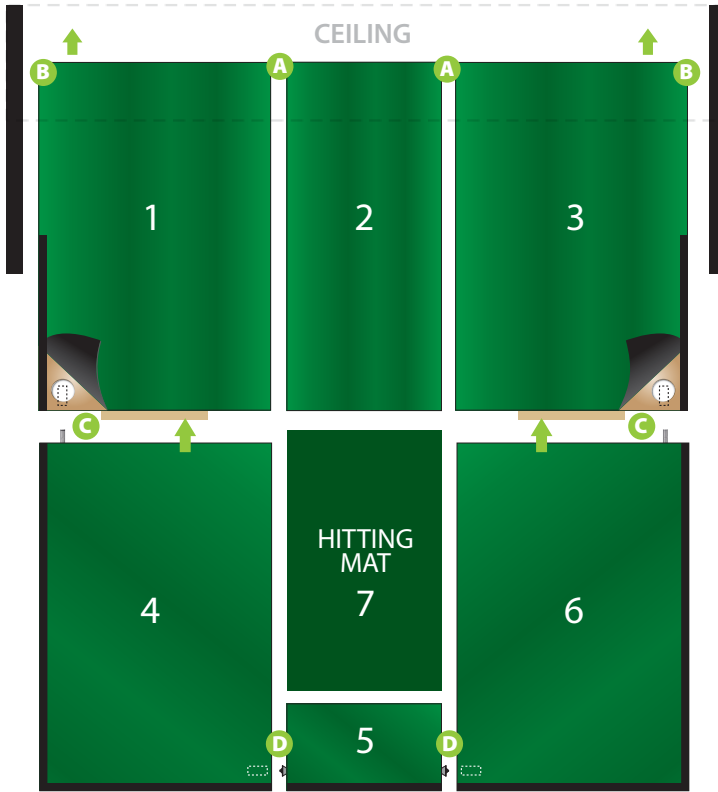


END OF STRUCTURE  
ASSEMBLY SECTION

1

Install the floor sections in order (1 to 7).

**A** and **B** you will need bolts washers and nuts. **C** you will need washers and nuts.



2

**Step 1**

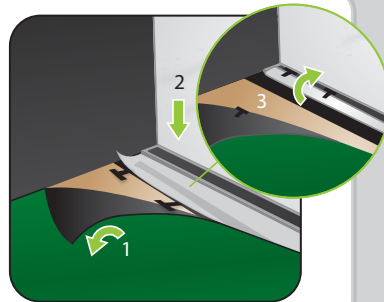
Lift green carpet.

**Step 2**

Stretch the white screen behind and under the aluminum bar and reach for it through the space.

**Step 3**

Stick it on the aluminum bar velcro.



4



3

**Step 1**

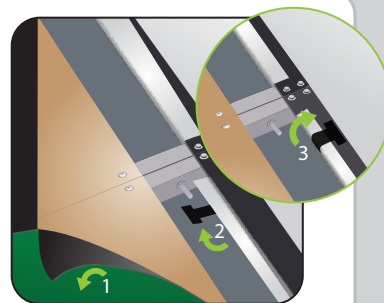
Lift green carpet.

**Step 2**

Stretch the black screen behind and under the aluminum bar and reach for it through the space.

**Step 3**

Stick it on the remaining half of the aluminum bar velcro.



END OF FLOOR INSTALLATION SECTION



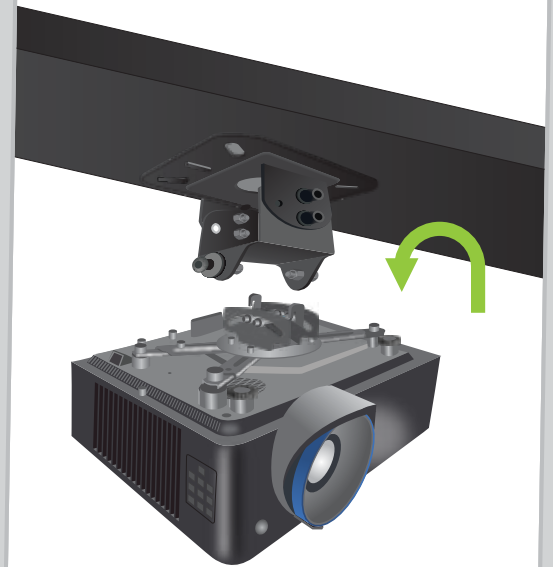
**HALF-WALL INSTALLATION**

Attach the half-wall panels to the structure with washers and nuts.



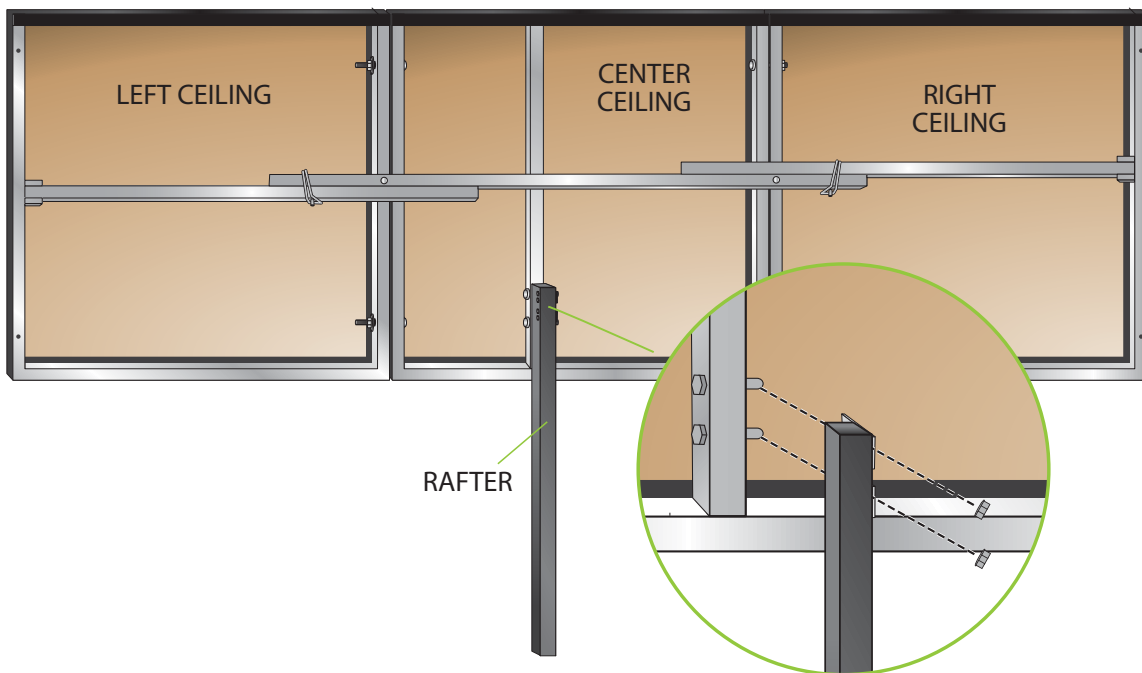
**PROJECTOR INSTALLATION**

Attach the projector on the projector mount. Refer to the instruction sheet inside the projector box.



**RAFTER INSTALLATION**

Attach the rafter to the ceiling structure with washers and nuts.



**END OF OPTIONAL INSTALLATION SECTION**