

RESIDENTIAL CONTROL VALVE AND CABINET



fire control system solutions

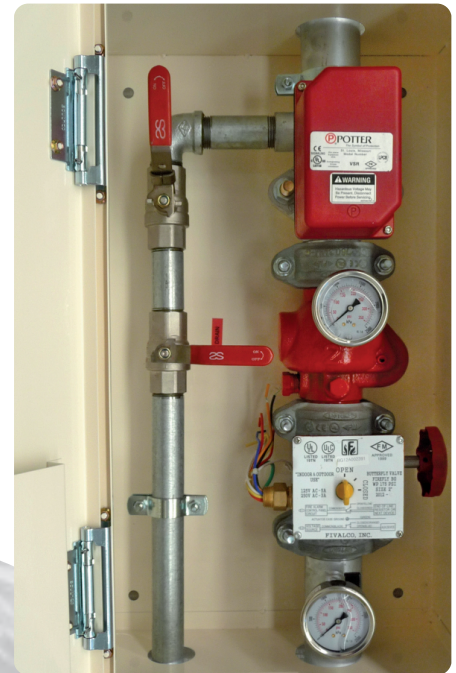
Mitigating risks while enhancing operational efficiencies with integrated solutions



FCSS sprinkler control valve is designed for use in systems that include connections to pipe diameter of 50mm or 65mm. The assembly unit, which comprises high quality valve components, is tailored for easy installation and maintenance. The unit is housed in a lockable cabinet consisting of a clip hinged door that can be removed to facilitate easy access for service and installation.

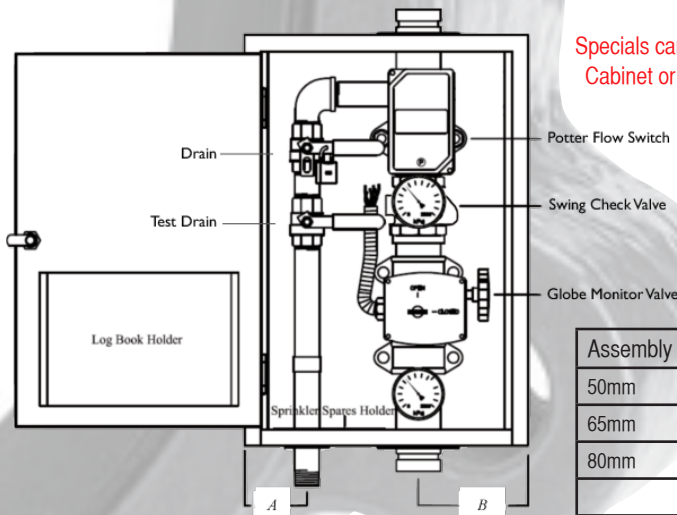
Features

- | | |
|-----------------------|--|
| Main Stop Valve | UL/FM approved gear operated butterfly valve |
| Check Valve | Resilient seat full flow swing check valve UL/FM approved |
| Test and Drain Valves | Brass lockable ball valve style with 10mm orifice for drain and 003 padlock |
| Flow Switch | Potter brand UL/FM approved VSR flow switch |
| Pressure Gauge | Two high quality glycerine filled gauges showing mains and system pressure at 0/2500 kpa |
| Pipework | Roll grooved pipe hot dipped UL/FM approved couplings |
| Testing | Hydrostatic pressure test before delivery |
| Security Cabinet | Lockable cabinet door fitted with 003 Fire Industry common key |
| Access | Removable door for service access with service book holder incorporated in door |
| Signage | Prominent door sign with additional signage to operating components |
| Dimension | As per dimension table below with provision for six spare sprinklers within cabinet |
| Coating | Beige colour on zinc seal sheet metal or stainless steel (on request) |



Installation

- Incoming and outgoing pipe connections are DN50 (60.3mm OD) roll grooved mechanical couplings. Various adaptors are available to connect to different pipe sizes and pipe types.
- The cabinet can be fitted between wall studs or surface mounted.
- Water pressure and flow rates should be confirmed as adequate.
- Electrical connections to be installed and tested by authorised personnel.
- Test and drain line to be piped to suitable location.
- Valves are UL/FM approved.



Specials can be built in DN80 and DN100 diameter in Cabinet or Panel model. See Panel model brochure for further information.

Assembly	A	B	Dimension (L x W x D)
50mm	85mm	135mm	640 x 385 x 255mm
65mm	70mm	235mm	695 x 480 x 335mm
80mm	85mm	190mm	840 x 500 x 385mm



Fire Control System Solutions Pty Limited
41 Babbage Drive
DANDENONG SOUTH VIC 3175
ABN 39 161 144 127

T +61 3 9791 7500
F +61 3 9791 7500
Email wayne@recycledrain.com.au