

ATV - TIRES & WHEELS

Specialty

Tire & Tube





SUPERIOR FLOTATION TO MAKE TRACKS WHERE OTHERS CAN'T

Where wheels just sink, Camso track systems will keep you moving by distributing your vehicle's weight over a greater surface area.

Furthermore, ground pressure exerted by the vehicle is reduced by an average of 75 %, depending on the vehicle's weight and the load it's carrying.

That means you can go just about anywhere, on any surface.

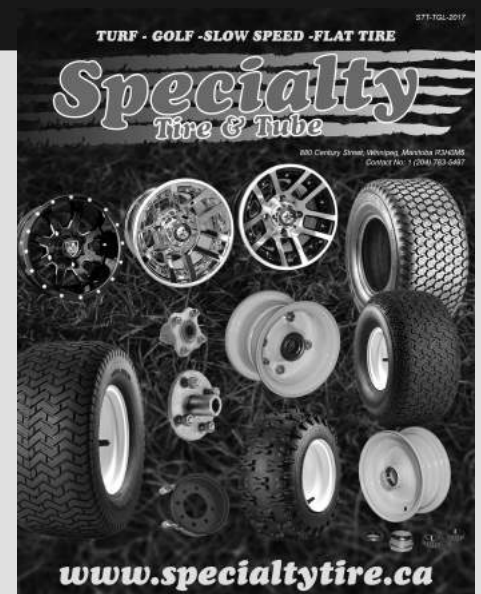
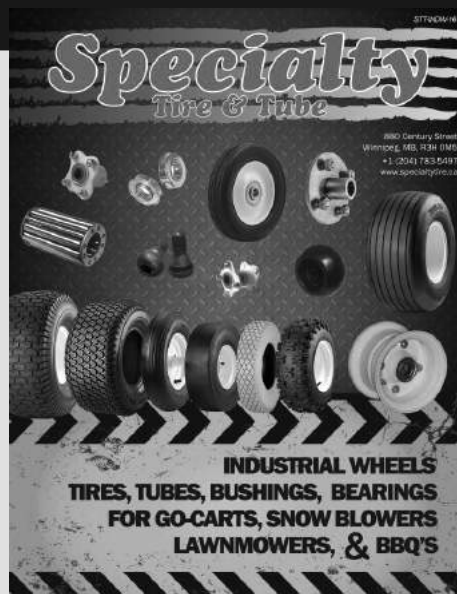
- Pressure reduced by up to 75 %*
- Optimized weight distribution

* May vary with respect to vehicle weight and load carried.

Table of Contents

ATV Tracks	1	- CAMOPLAST - Tatou 4S Tracks
ATV Wheels	3	- STI - Wheels
	4	- MSA - Wheels
	5	- ROCKSTAR, KMC XD - Wheels
ATV Caps & Nuts	6	- ATV Wheels Parts - Spacer Kits - Powersports Track System - CAMSO - ATV/UTV Track System
ATV Tires	7	- KENDA - Front Max - ITP- Holeshot - CARLISLE - Trail Wolf Sport - MAXXIS - Razr Sport - ITP - Mudlite SP/AT
	8	- KENDA - Bear Claw - Mud Wolf - Terminator
	9	- ITP - Mudlite XL & XXL - Outback MAX - Mega Mayhem - Slingshot
	10	- CARLISLE - Black Rock -MAXXIS- Zilla - GORILLA - SilverBack
	11	- HIGHLIFTER - Outlaw - EFX - Moto Boss - Moto Monster - SEDONA - Mudd-in-law - Rock-a-Billy
	12	- EFX - Motohammer - Motoclave - MAXXIS - Bighorn
	13	- SEDONNA - Rip Saw R/T Radial - Versa Trail ATR
	14	- EFX - Moto MTC - ITP - Mudlite XTR - CARLISLE - AT489
	15	- CARLISLE - All Trail - Trail Wolf - HD Field Trax
	16	- KENDA - Scorpion K290 -CARLISLE - Knobby - Turf Tamer - Stryker
Tire Chains	17	- ATV Tire Chains
Tubes	18	- ATV Tubes

ALL THE ODD TIRES, ALL THE TIME



Winnipeg

880 Century St.
Winnipeg, MB,
Canada, R3H 0M5

Tel: (204) 783-5497
Fax: (204) 786-5997
Toll Free: 888-716-8686

info@specialtytire.ca

Calgary

421 53rd Ave
Calgary, AB,
Canada, T2H 1K8

Tel: (403) 252-3055
Fax: (403) 287-3503
Toll Free: 800-661-6600

infocal@specialtytire.ca

www.specialtytire.ca

ATV Wheels

STI's HD6 Alloy wheels deliver style in two unique finishes:



Machined with Gloss Black

Available in 17-inch, 14-inch and 12-inch

Matte Black with Mill Cut

Available in 17-inch, 14-inch or 12 inch

- * Load rating: 1000-pound
- ** Lifetime Structural Warranty

STI's HD Beadlock:

Gloss Machined



STI's HD5 wheels represent the ultimate in strength and style:

Beadlock Machined w/ Glass Black

Available in 15-inch

Beadlock Matte Black

Available in 14-inch

* Load rating: 1000-pound



Matte Black



STI's lightweight HD4 wheels offer durability and style:

Gloss Black with Machined Accents

Available in 17-inch, 15-inch, 14-inch and 12-inch



Matte Black

Available in 17-inch, 15-inch or 12-inch

- * Load rating: 1000-pound
- ** Lifetime Structural Warranty

STI's ProLite 14:



Polished

Available 14-inch or 12-inch

STI's HD3 wheels
have rugged character:
Available 14-inch and 12-inch



**Gloss Black
or Gloss Black with Machined Accents**

**Gloss
Black**

Available 14-inch



UTV/ATV Wheels

**MSA's M26 Vibe
Milled Gloss**

Available:
18-inch
16-inch
14-inch



**MSA's M26 Vibe
Milled Dark Tint**

Available in 14-inch



**MSA M20 Kore
Flat Black**

Available in 14 and 16-inch



**MSA M23 Battle
Flat Black**

Available:
18-inch
14-inch
12-inch size

**MSA M21 LOK
Beadlock
Gunmetal Black**

Available in 16-inch



**MSA M27 Rage
Gloss Black**

Available in 12-inch and 14-inch



**MSA's M12 Diesel
Black**

Available:
18-inch
20-inch
22-inch size

**MSA's M28
Ambush
Graphite**

Available in 14-inch and 15-inch



**MSA's M21 Lok Beadlock
Charcoal Tint**

Available:
14-inch
15-inch
16-inch



**MSA M30 Throttle
Machine Gloss
Black**

Available:
14-inch
16-inch
20-inch



**MSA's M31 Lok2 Beadlock
Satin Black w/
Matte Gray Ring**

Available:
14-inch
15-inch
16-inch
18-inch



**XS228 Machete Beadlock
Satin Black**

Available:
14-inch
15-inch



**XS128 Machete
Satin Black**

Available:
14-inch
15-inch



**XS129 Holeshot
Satin Black**

Available:
14-inch
15-inch



**XS811 Rockstar II
Satin Black**

Available:
14-inch
15-inch
16-inch
18-inch
20-inch



**XS775 Rockstar I
Satin Black**

Available:
14-inch
15-inch





ATV Wheel Parts

Part Number	Description	
Center Caps		
TTAC013440	Chrome Steel Center Cap 4/110 Fits 12" Delta Wheels	(SM1212)
TTAC015483	Black Steel Center Cap 4/110,4/115 Fits C-4,5,6 & 7 Wheels	(SM1212B)
TTAC013421	Black Center Cap for 4/110mm STEEL DELTA WHEELS	(SM130B)
TTAC013422	Chrome Center Cap for 4/110mm STEEL DELTA WHEELS	(SM1300)
TTAC019843	Chrome Center Cap for 4/110/115mm ITP SS ALLOY WHEELS	
TTAC215573	Black Center Cap for 4/110/115mm ITP SS ALLOY & SPORT WHEELS	
TTAC019844	Chrome Center Cap for 4/137mm ITP SS ALLOY WHEELS	
TTAC019845	Chrome Center Cap for 4/156mm ITP SS ALLOY WHEELS	
TTAC215556	Center Cap for 4/110mm ITP SS312 & SYSTEM SIX WHEELS	
TTAC215557	Center Cap for 4/137mm ITP SS312 & SYSTEM SIX WHEELS	
TTAC215558	Center Cap for 4/156mm ITP SS312 & SYSTEM SIX WHEELS	
TTAC015699	(Box/4) Chrome Center Cap 4/110,115 Fits C-4 Wheels	(SM1212H)
TTAC015559	(Box/4) Chrome Caps For 4/115 & 110mm Type-5,6,7 Wheels	(P110BX)
TTAC015400	(Box/4) Chrome Caps For 4/137 Type-5,6,7 Wheels	(P137BX)
TTAC015694	(Box/4) Grey Center Cap 4/137 Fits C-4,5,6 & 7 Wheels	(G137BX)
TTAC015698	(Box/4) CHROME Caps For 4/156mm Type-5,6,7 Wheels	(P156BX)
TTAC015689	(Box/4) BLACK Caps For 4/156mm Type-5,6,7 Wheels	(B156BX)
TTAC015695	(Box/4) Grey Center Cap 4/156 Fits C-4,5,6 & 7 Wheels	(G156BX)



Lug Nuts

TTAN015403	(16/Box) 3/8" Tapered Chrome Lug Nuts	(Type 5,6,7 & SS106)
TTAN015401	(16/Box) 10mm Flat Base Chrm Lug Nut 17mm Head	(Type 7, SS106)
TTAN019748	(16/Box) 10mm Flat Base Chrome Lug Nuts 14mm Head	(SS106,108)
TTAN015696	(16/Box) 10mm Tapered Chrome Lug Nuts	(Type 7, SS106-108-112)
TTAN019906	(16/Box) 10mm x 1.5 - 60deg. Tapered Chrome Lug Nuts	
TTAN019904	(16/Box) 12mm Flat Base Chrome Lug Nuts 17mm Head	
TTAN115197	(16/Box) 12mm x 1.50 Tapered Chrome Lug Nuts	



Spacer Kits

Part Number	Description
TTAS059029	Pair/Spacer Kit for 4/110mm, 1" Thick Alum, 4 Studs & Nuts
TTAS059031	Pair/Spacer Kit for 4 on 4", 1" Thick Alum, 4 Studs & Nuts
TTAS059032	Pair/Spacer Kit for 4/137mm, 1" Thick Alum, 4 Studs & Nuts
TTAS059033	Pair/Spacer Kit for 4/156mm, 1" Thick Alum, 4 Studs & Nuts
TTAS201190	Pair/Spacer Kit for 4/110mm, 1.5" Thick Alum, 4 Studs & Nuts
TTAS201196	Pair/Spacer Kit for 4/156mm, 1.5" Thick Alum + Hardware



Powersports Track System

Part Number	Description
TQTR ATV T4S	Camso T4S ATV Track System
TQTR UTV 4S1	Camso 4S1 UTV Track System

*Note: Tracks are custom ordered from factory to fit each machine.



**FRONT MAX K284**

Part Number	Size	Ply Rating	Mounted Diameter	Mounted Width	Load Capacity	Wheel Required	Tread Depth
TTA200708 FM IK	20 x 7 - 8	2	20.6"	7.2"	195lb	8 x 5.5	N/A
TTA210809 FM IK	21 x 8 - 9	2	20.7"	6.9"	225lb	9 x 5	N/A
TTA210710 FM IK	21 x 7 - 10	2	20.7"	6.9"	205lb	10 x 5	N/A
TTA220810 FM IK	22 x 8 - 10	2	21.0"	6.9"	240lb	10 x 5	N/A
TTA230811 FM IK	23.5 x 8 - 11	2	23.4"	7.5"	255lb	11 x 6	N/A

**HOLESHOT**

Part Number	Size	Rating	Diameter	Width	Capacity	Wheel Required	Tread Depth
TTA220710 HSH AI	22 x 7 - 10	6	N/A	N/A	N/A	N/A	N/A
TTA201109 HSH AI	20 x 11 - 9	6	N/A	N/A	N/A	N/A	N/A
TTA201109 HS AI	20 x 11 - 9	4	N/A	N/A	N/A	N/A	N/A
TTA201110 HSX AI	20 x 11 - 10	6	N/A	N/A	N/A	N/A	N/A

**TRAIL WOLF SPORT**

Part Number	Size	Ply Rating	Mounted Diameter	Mounted Width	Load Capacity	Wheel Required	Tread Depth
TTA210710 TWS A	21 x 7 - 10	6	20.9"	6.7"	300lb	10 x 8	N/A
TTA220710 TWS A	22 x 7 - 10	6	21.8"	7.1"	255lb	10 x 6	N/A
TTA201009 TWS A	20 x 10 - 9	6	19.6"	10.8"	235lb	9 x 9	N/A
TTA221109 TWS A	22 x 11 - 9	6	21.6"	11.4"	395lb	9 x 9	N/A

**RAZR SPORT M931/M932**

Part Number	Size	Ply Rating	Mounted Diameter	Mounted Width	Load Capacity	Wheel Required	Tread Depth
TTA210710 RAS IM	21 x 7 - 10	4	21.4"	7.00"	N/A	N/A	7/16"
TTA201109 RAS IM	20 x 11 - 9	4	20.0"	11.10"	N/A	N/A	7/16"
TTA221109 RA2 IM	22 x 11 - 9	6	N/A	N/A	N/A	N/A	5/8"

**MUDLITE SP**

Part Number	Size	Ply Rating	Mounted Diameter	Mounted Width	Load Capacity	Wheel Required	Tread Depth
TTA220710 MLS AI	22 x 7 - 10	6	22.01"	6.97"	255lb	10 x 5.5	1/2"
TTA201109 MLS AI	20 x 11 - 9	6	20.0"	11.06"	340lb	9 x 9	5/8"

**MUDLITE AT**

Part Number	Size	Ply Rating	Mounted Diameter	Mounted Width	Load Capacity	Wheel Required	Tread Depth
TTA221109 MLA AI	22 x 11 - 9	6	22.01"	11.06"	395lb	9 x 9	3/4"
TTA251209 MLA AI	25 x 12 - 9	6	25.0"	11.92"	495lb	9 x 9.5	3/4"
TTA220810 MLA AI	22 x 8 - 10	6	22.0"	8.03"	275lb	10 x 6.5	3/4"
TTA221110 MLA AI	22 x 11 - 10	6	22.01"	11.06"	385lb	10 x 9	3/4"
TTA230810 MLA AI	23 x 8 - 10	6	23.0"	8.03"	300lb	10 x 6.5	3/4"
TTA231010 MLA AI	23 x 10 - 10	6	N/A	N/A	N/A	N/A	3/4"
TTA241110 MLA AI	24 x 11 - 10	6	24.30"	11.06"	440lb	10 x 9	3/4"
TTA251110 MLA AI	25 x 11 - 10	6	N/A	N/A	N/A	N/A	3/4"
TTA271210 MLA AI	27 x 12 - 10	6	27.01"	11.97"	550lb	12 x 9.5	1-1/16"
TTA240811 MLA AI	24 x 8 - 11	6	N/A	N/A	N/A	N/A	3/4"
TTA240911 MLA AI	24 x 9 - 11	6	N/A	N/A	N/A	N/A	3/4"
TTA241011 MLA AI	24 x 10 - 11	6	N/A	N/A	N/A	N/A	3/4"
TTA250811 MLA AI	25 x 8 - 11	6	25.0"	8.0"	355lb	11 x 6.5	3/4"
TTA251011 MLA AI	25 x 10 - 11	6	25.0"	10.0"	420lb	11 x 8	3/4"
TTA240812 MLA AI	24 x 8 - 12	6	24.25"	8.03"	310lb	12 x 6.5	3/4"

BEAR CLAW K299



Part Number	Size	Ply Rating	Mounted Diameter	Mounted Width	Load Capacity	Wheel Required	Tread Depth
TTA221208 BC IK	22 x 12 - 8	6	21.3"	11.5"	430lb	8 x 10	20mm
TTA221209 BC IK	22 x 12 - 9	6	22.1"	10.9"	430lb	9 x 9	20mm
TTA251209 BC IK	25 x 12.50 - 9	6	24.6"	11.2"	495lb	9 x 9	20mm
TTA220810 BC IK	22 x 8 - 10	6	21.5"	8.1"	275lb	10 x 5	15mm
TTA221210 BC IK	22 x 12 - 10	6	21.1"	11.3"	430lb	10 x 10	15mm
TTA231010 BC IK	23 x 10 - 10	6	N/A	N/A	N/A	N/A	15mm
TTA251210 BC IK	25 x 12.50 - 10	6	24.2"	11.8"	495lb	10 x 10	15mm
TTA230811 BC IK	23 x 8 - 11	6	22.8"	7.6"	290lb	11 x 6	15mm
TTA240911 BC IK	24 x 9 - 11	6	23.7"	8.5"	365lb	11 x 6	15mm
TTA251011 BC IK	25 x 10 - 11	6	24.4"	9.4"	420lb	11 x 7	15mm
TTA251211 BC IK	25 x 12.50 - 11	6	24.4"	10.8"	495lb	11 x 7.5	20mm
TTA240812 BC IK	24 x 8 - 12	6	23.3"	7.5"	310lb	12 x 6	15mm
TTA250812 BC IK	25 x 8 - 12	6	24.3"	8.3"	340lb	12 x 7	15mm
TTA251012 BC IK	25 x 10 - 12	6	24.5"	9.3"	420lb	12 x 8.5	15mm
TTA251212 BC IK	25 x 12.50 - 12	6	25.2"	11.8"	495lb	12 x 10.5	20mm
TTA260912 BC IK	26 X 9 - 12	6	25.0"	8.9"	420lb	12 x 7	15mm
TTA261212 BC IK	26 x 12 - 12	6	25.2"	11.8"	495lb	12 x 10.5	20mm
TTA271012 BC IK	27 x 10 - 12	6	25.5"	9.7"	420lb	12 x 8.5	20mm
TTA271212 BC IK	27 x 12 - 12	6	25.8"	11.3"	495lb	12 x 10.5	20mm

MUD WOLF



Part Number	Size	Ply Rating	Mounted Diameter	Mounted Width	Load Capacity	Wheel Required	Tread Depth
TTA250812 MW A	25 x 8 - 12	6	25.0"	8.3"	340lb	12 x 6.5	1-1/8"
TTA251112 MW A	25 x 11 - 12	6	25.0"	11.6"	455lb	12 x 9	1-1/8"
TTA260912 MW A	26 X 9 - 12	6	26.0"	9.2"	410lb	12 x 7	1-1/8"
TTA261212 MW A	26 x 12 - 12	6	26.0"	11.5"	520lb	12 x 8	1-1/8"
TTA270912 MW A	27 x 9 - 12	6	27.0"	9.0"	440lb	12 x 7	1-1/8"
TTA271212 MW A	27 x 12 - 12	6	27.0"	12.0"	550lb	12 x 9.5	1-1/8"
TTA260914 MW A	26 X 9 - 14	6	26.55"	8.05"	395lb	14 x 7	1-1/8"
TTA261114 MW A	26 x 11 - 14	6	26.91"	10.05"	465lb	14 x 8	1-1/8"

TERMINATOR UTV/ATV TIRE



SuperATV's Terminator is hands down the most aggressive mud tire on the market. The Terminator has the ability to take you where other tires can only dream of going.

The Terminator's 6-Ply construction is designed for ultimate off-road performance, guarding against all the thorns and terrain you can put it through. With its angled tread design, the tire diverts mud away for improved grip and traction.

Available Tire Sizes

- 26.5x10-14
- 28x10-12
- 28x10-14
- 28x12-14
- 29.5x10-12
- 29.5x10-14
- 29.5x12-14
- 32x10-14
- 33x10-15
- 34x10-15
- 35x10.5-16
- 36x10-18
- 36x12-18

FEATURES

- 6-Ply ratings
- 2" tread depth
- Load capacity : 585 @ 7 PSI
- Unmatched grip when the going gets tough
- Built in rim guard to protect wheels from dings and dents
- Unique tapered tread for self cleaning





MUDLITE XL & XXL

Part Number	Size	Ply Rating	Mounted Diameter	Mounted Width	Load Capacity	Wheel Required	Tread Depth
TTA250812 ML AI	25 x 8 - 12	6	25.0"	8.03"	340lb	12 x 6.5	1-1/8"
TTA251012 ML AI	25 x 10 - 12	6	25.0"	10.0"	420lb	12 x 8	1-1/8"
TTA251212 ML AI	25 x 12 - 12	6	25.0"	11.80"	495lb	12 x 9.5	1-1/8"
TTA260912 ML AI	26 X 9 - 12	6	25.98"	8.94"	768lb	12 x 7	1-1/8"
TTA261012 ML AI	26 X 10 - 12	6	26.0"	9.50"	906lb	12 x 8	1-1/8"
TTA261212 ML AI	26 x 12 - 12	6	26.25"	11.50"	1002lb	12 x 9.5	1-1/8"
TTA270912 ML AI	27 x 9 - 12	6	27.01"	8.94"	440lb	12 x 7	1-1/8"
TTA271012 ML AI	27 x 10 - 12	6	27.0"	9.50"	465lb	12 x 8	1-1/8"
TTA271212 ML AI	27 x 12 - 12	6	27.25"	11.50"	550lb	12 x 9.5	1-1/8"
TTA281012 ML AI	28 x 10 - 12	6	28.0"	9.80"	495lb	12 x 8	1-1/8"
TTA281212 ML AI	28 x 12 - 12	6	28.25"	11.20"	565lb	12 x 9.5	1-1/8"
TTA301012 ML AI	30 x 10 - 12	6	30.0"	10.0"	550lb	12 x 8	1.3"
TTA301212 ML AI	30 x 12 - 12	6	30.50"	12.0"	660lb	12 x 9.5	1.3"
TTA271014 ML AI	27 x 10 - 14	6	27.0"	10.0"	936lb	14 x 8	1-1/8"
TTA271214 ML AI	27 x 12 - 14	6	27.25"	12.0"	1128lb	14 x 9.5	1-1/8"
TTA281014 ML AI	28 x 10 - 14	6	27.50"	10.0"	996lb	14 x 8	1-1/8"
TTA281214 ML AI	28 x 12 - 14	6	27.25"	11.80"	1194lb	14 x 9.5	1-1/8"
TTA301014 ML AI	30 x 10 - 14	6	N/A	N/A	N/A	14 x 8	1.3"
TTA301214 ML AI	30 x 12 - 14	6	N/A	N/A	N/A	14 x 8	1.3"



OUTBACK MAX



		Ply Rating	Mounted Diameter	Mounted Width	Load Capacity	Wheel Required	Tread Depth
TTA301014 OBM IS	30 x 10 - 14	8	30"	10"	1134lb	14 x 7	2"
TTA311015 OBM IS	31 x 10 - 15	8	31"	10"	1185lb	15 x 7	2"
TTA321017 OBM IS	32 x 10 - 17	8	32"	10"	1209lb	17 x 7	2"



MEGA MAYHEM

SIZES	PLY	WEIGHT	TIRE #
27x9-12	6	30.1	6P0035.1
27x11-12	6	33.7	6P0037
27x9-14	6	27.5	6P0032
27x11-14	6	33.1	6P0033
28x9-12	6	32.8	6P0051
28x11-12	6	34.4	6P0043
28x9-14	6	30.4	6P0052
28x11-14	6	33.5	6P0044



SLINGSHOT

SIZES	PLY	WEIGHT
0320-0456	25x8-12	6
0320-0674	25x8-12	6
0320-0675	25x10-12	6
0320-0676	26x9-12	6
0320-0677	26x11-12	6
0320-0678	26x9-14	6
0320-0679	26x11-14	6
0320-0680	27x9-14	6
0320-0681	27x11-14	6

BLACK ROCK



Part Number	Size	Ply Rating	Mounted Diameter	Mounted Width	Load Capacity	Wheel Required	Tread Depth
TTA250812 BR A	25 x 8 - 12	6	25"	8"	340lb	12 x 6.5	N/A
TTA251012 BR A	25 x 10 - 12	6	25.25"	10"	420lb	12 x 8	N/A
TTA260912 BR A	26 x 9 - 12	6	26"	9"	410lb	12 x 7	N/A
TTA261112 BR A	26 x 11 - 12	6	26.25"	11.1"	480lb	12 x 9	N/A



'ZILLA MU01/MU02



Part Number	Size	Ply Rating	Mounted Diameter	Mounted Width	Load Capacity	Wheel Required	Tread Depth
TTA250812 ZI IM	25 x 8 - 12	6	25.4"	7.50"	N/A	N/A	1.2"
TTA251012 ZI IM	25 x 10 - 12	6	25.4"	9.80"	N/A	N/A	1.2"
TTA260912 ZI IM	26 X 9 - 12	6	26.0"	8.70"	N/A	N/A	1-3/16"
TTA261112 ZI IM	26 x 11 - 12	6	26.0"	10.30"	N/A	N/A	1-3/16"
TTA270912 ZI IM	27 x 9 - 12	6	27"	8.7"	N/A	N/A	1-3/16"
TTA271112 ZI IM	27 x 11 - 12	6	27"	10.4"	N/A	N/A	1-3/16"
TTA281012 ZI IM	28 x 10 - 12	6	28"	9.3"	N/A	N/A	1-3/16"
TTA271014 ZI IM	27 x 10 - 14	6	27"	9.3"	N/A	N/A	1-3/16"
TTA280914 ZI IM	28 x 9 - 14	6	28"	8.7"	N/A	N/A	1-3/16"
TTA281114 ZI IM	28 x 11 - 14	6	28"	8.7"	N/A	N/A	1-3/16"
TTA300914 ZI IM	30 x 9 - 14	6	30.2"	8.5"	N/A	N/A	1-3/16"
TTA301114 ZI IM	30 x 11 - 14	6	30"	10.5"	N/A	N/A	1-3/16"



SILVERBACK

Part Number	Size	Ply Rating	Mounted Diameter	Mounted Width	Load Capacity	Wheel Required	Tread Depth
TTA271012 SI AG	27 x 10 - 12	6	N/A	N/A	N/A	12 x 7	1.5"
TTA271212 SI AG	27 x 12 - 12	6	N/A	N/A	N/A	12 x 7	1.5"
TTA281012 SI AG	28 x 10 - 12	6	N/A	N/A	N/A	12 x 7	1.75"
TTA281212 SI AG	28 x 12 - 12	6	N/A	N/A	N/A	12 x 7	1.75"
TTA301012 SI AG	30 x 10 - 12	6	N/A	N/A	N/A	12 x 7	2"
TTA300914 SI AG	30 x 9 - 14	6	N/A	N/A	N/A	14 x 7	2"
TTA301114 SI AG	30 x 11 - 14	6	N/A	N/A	N/A	14 x 7	2"
TTA321014 SI AG	32 x 10 - 14	6	N/A	N/A	N/A	14 x 7	2.5"

HIGHLIFTER

OUTLAW

Part Number	Size	Ply Rating	Mounted Diameter	Mounted Width	Load Capacity	Wheel Required	Tread Depth
TTA281212 OU IH	28 x 12.50 - 12	6	N/A	N/A	N/A	N/A	1-1/4"
TTA291012 OU IH	29.5 x 10 - 12	6	N/A	N/A	N/A	N/A	1-1/4"
TTA291212 OU IH	29.5 x 12 - 12	6	N/A	N/A	N/A	N/A	1-1/4"
TTA311114 OU IH	31 x 11 - 14	6	N/A	N/A	N/A	N/A	1-1/4"
TTA319514 OU IH	31 x 9.50 - 14	6	N/A	N/A	N/A	N/A	1-1/4"



HIGHLIFTER

OUTLAW 2

Part Number	Size	Ply Rating	Mounted Diameter	Mounted Width	Load Capacity	Wheel Required	Tread Depth
TTA281114 OU2 IH	28x11x14	6	N/A	N/A	N/A	N/A	1-5/8"
TTA289514 OU2 IH	28x9.5x14	6	N/A	N/A	N/A	N/A	1-5/8"
TTA291114 OU2 IH	29.5x11x14	6	N/A	N/A	N/A	N/A	1-5/8"
TTA299514 OU2 IH	29.5x9.5.14	6	N/A	N/A	N/A	N/A	1-5/8"
TTA321514 OU2 IH	32.5x10.5x14	6	N/A	N/A	N/A	N/A	1-5/8"
TTA341516 OU2 IH	34.5x10.5x16	6	N/A	N/A	N/A	N/A	1-5/8"
TTA271212 OU2 IH	27x12x12	6	N/A	N/A	N/A	N/A	1-5/8"
TTA279512 OU2 IH	27x9.50x12	6	N/A	N/A	N/A	N/A	1-5/8"
TTA281212 OU2 IH	28x12.50x12	6	N/A	N/A	N/A	N/A	1-5/8"



MOTO BOSS

Part Number	Size	Ply Rating	Mounted Diameter	Mounted Width	Load Capacity	Wheel Required	Tread Depth
TTA281014 MOB IE	28 x 10 - 14	6	N/A	N/A	1000lbs	14"	2"
TTA301014 MOB IE	30 x 10 - 14	6	N/A	N/A	1000lbs	14"	2"
TTA321015 MOB IE	32 x 10 - 15	6	N/A	N/A	1000lbs	15"	2"
TTA341016 MOB IE	34 x 10 - 16	6	N/A	N/A	1000lbs	16"	2"



MOTO MONSTER

Part Number	Size	Ply Rating	Mounted Diameter	Mounted Width	Load Capacity	Wheel Required	Tread Depth
TTA301014 MMO IE	30 x 10 - 14	6	30"	10"	N/A	14 X 7	2"



SEDONA

TIRE AND WHEEL

MUDDER-IN-LAW

Part Number	Size	Ply Rating	Mounted Diameter	Mounted Width	Load Capacity	Wheel Required	Tread Depth
TTA301014 MIL SE	30 x 10R - 14	8	N/A	N/A	617lbs	14"	2"
TTA321014 MOB IE	30 x 10R - 14	8	N/A	N/A	694lbs	14"	2"

SEDONA

TIRE AND WHEEL

ROCK-A-BILLY

Part Number	Size	Ply Rating	Mounted Diameter	Mounted Width	Load Capacity	Wheel Required	Tread Depth
	28x10R-14	8			59-536 lbs		
	30x10R-14	8			64-617 lbs		





MOTOHAMMER

Part Number	Size	Ply Rating	Mounted Diameter	Mounted Width	Load Capacity	Wheel Required	Tread Depth
TTA270914 MOH IE	27 x 9 - 14	8	27"	N/A	800lb	14"	N/A
TTA271114 MOH IE	27 x 11 - 14	8	27"	N/A	800lb	14"	N/A
TTA301015 MOH IE	30 x 10 - 15	8	30"	N/A	1000lb	15"	N/A
TTA311014 MOH IE	31 x 10 - 14	8	31"	N/A	1000lb	14"	N/A



MOTOCLAW

Part Number	Size	Ply Rating	Mounted Diameter	Mounted Width	Load Capacity	Wheel Required	Tread Depth
TTA260912 MC IE	26 x 9 - 12	6	26"	N/A	820lb	12"	N/A
TTA261112 MC IE	26 x 11 - 12	6	26"	N/A	990lb	12"	N/A
TTA271014 MC IE	27 x 10 - 14R	8	27"	N/A	1000lb	14"	N/A
TTA280915 MC IE	28 x 9 - 15	8	28"	N/A	800lb	15"	N/A
TTA281115 MC IE	28 x 11 - 15R	8	28"	N/A	920lb	15"	N/A
TTA291016 MC IE	29 x 10 - 16	6	29"	N/A	990lb	16"	N/A
TTA301014 MC IE	30 x 10 - 14R	8	30"	N/A	1000lb	14"	N/A



BIG HORN

Part Number	Size	Ply Rating	Mounted Diameter	Mounted Width	Load Capacity	Wheel Required	Tread Depth
Factory available	25 x 8 - R12	6	N/A	N/A	N/A	Front	N/A
TTA260912 BH IM	25 x 9 - R12	6	N/A	N/A	N/A	Front	N/A
Factory available	27 x 9 - R12	6	N/A	N/A	N/A	Front	N/A
TTA260914 BH IM	26 x 9 - R14	6	N/A	N/A	N/A	Front	N/A
Factory available	29 x 9 - R14	6	N/A	N/A	N/A	Front	N/A
Factory available	26 x 8 - R15	6	N/A	N/A	N/A	Front	N/A
Factory available	25 x 10 - R12	6	N/A	N/A	N/A	Rear	N/A
TTA261212 BH IM	26 x 12 - R12	6	N/A	N/A	N/A	Rear	N/A
Factory available	27 x 12 - R12	6	N/A	N/A	N/A	Rear	N/A
TTA261114 BH IM	26 x 11 - R14	6	N/A	N/A	N/A	Rear	N/A
TTA281014 BH IM	28 x 10 - R14	6	N/A	N/A	N/A	Rear	N/A
Factory available	29 x 11 - R14	6	N/A	N/A	N/A	Rear	N/A
TTA301014 BH IM	30 x 10 - R14	6	N/A	N/A	N/A	Rear	N/A
Factory available	26 x 10 - R15	6	N/A	N/A	N/A	Rear	N/A



BIG HORN 2.0

Part Number	Size	Ply Rating	Mounted Diameter	Mounted Width	Load Capacity	Wheel Required	Tread Depth
TTA250812 BH2 IM	25 x 8 - R12	6	N/A	N/A	N/A	12"	N/A
TTA251012 BH2 IM	25 x 10 - R12	6	N/A	N/A	N/A	12"	N/A
Factory available	26 x 9 - R12	6	N/A	N/A	N/A	12"	N/A
Factory available	26 x 11 - R12	6	N/A	N/A	N/A	12"	N/A
Factory available	29 x 9 - R14	6	N/A	N/A	N/A	14"	N/A
Factory available	26 x 11 - R14	6	N/A	N/A	N/A	14"	N/A
Factory available	28 x 10 - R12	6	N/A	N/A	N/A	12"	N/A
Factory available	28 x 9 - R14	6	N/A	N/A	N/A	14"	N/A
Factory available	28 x 11 - R14	6	N/A	N/A	N/A	14"	N/A





RIPSAW R/T RADIAL

Part Number	Size	Ply Rating	Mounted Diameter	Mounted Width	Load Capacity	Wheel Required	Tread Depth
TTA260912 RSR SE	26x9R-12	6	26	9	49-408 Lbs		1-1/8"
TTA260914 RSR SE	26x9R-14	6	26	9	72-783 Lbs		1-1/8"
TTA270914 RSR SE	27x9R-14	6	27	9	50-414 Lbs		1-1/8"

Part Number	Size	Ply Rating	Mounted Diameter	Mounted Width	Load Capacity	Wheel Required	Tread Depth
TTA261112 RSR SE	26x11R-12	6	26	11	55-481 Lbs		1-1/8"
TTA261114 RSR SE	26x11R-14	6	26	11	80-992 Lbs		1-1/8"
TTA271114 RSR SE	27x11R-14	6	27	11	56-494 Lbs		1-1/8"

Part Number	Size	Ply Rating	Mounted Diameter	Mounted Width	Load Capacity	Wheel Required	Tread Depth
TTA281014 RSR SE	28x10R-14	8	28	10	59-536 Lbs		1-1/8"



UTV / ATV TIRES



VERSA TRAIL ATR

Part Number	Size	Ply Rating	Mounted Diameter	Mounted Width	Load Capacity	Wheel Required	Tread Depth
	25x8.00R12 NHS	6	25.1	8	1020 lbs		23
	25x10.00R12 NHS	6	25.5	N/A	1200 lbs		23
	26x9.00R12 NHS	6	26.1	N/A	1170 lbs		23
	26x11R.00R12 NHS	6	26.5	N/A	1430 lbs		23
	27x9.00R12 NHS	6	27.1	N/A	1230 lbs		23
	27x11.00R12 NHS	6	27.5	N/A	1520 lbs		23
	27x9.00R14 NHS	6	27.1	N/A	1200 lbs		23
	27x11.00R14 NHS	6	27.5	N/A	1480 lbs		23
	28x10.00R14 NHS	6	28.2	N/A	1390 lbs		23
	28x12.00R14 NHS	6	28.6	N/A	1650 lbs		23
	29x10.00R14 NHS	6	29.4	N/A	1430 lbs		23





MOTO MTC

Part Number	Size	Ply Rating	Mounted Diameter	Mounted Width	Load Capacity	Wheel Required	Tread Depth
TTA260912 MMT IE	26 x 9 - 12	6	26"	N/A	600lb	12	N/A
TTA261112 MMT IE	26 x 11 - 12	6	26"	N/A	700lb	12	N/A
TTA260914 MMT IE	26 x 9 - 14	6	26.25"	N/A	410lb	14	N/A
TTA261114 MMT IE	26 x 11 - 14	6	26.25"	N/A	480lb	14	N/A
TTA281114 MMT IE	28 x 11 - 14	6	28"	N/A	1000lb	14	N/A
TTA281015 MMT IE	28 x 10 - 15	6	28"	N/A	1000lb	15	N/A
TTA301016 MMT IE	30 x 10 - 16	6	30"	N/A	1000lb	16	N/A
TTA321018 MMT IE	32 x 10 - 18	6	32"	N/A	1000lb	18	N/A



MUDLITE XTR

Part Number	Size	Ply Rating	Mounted Diameter	Mounted Width	Load Capacity	Wheel Required	Tread Depth
TTA260912 MLX AI	26 x 9 R 12	6	26.50"	9.0"	440lb	12 x 7	1-1/8"
TTA261112 MLX AI	26 x 11 R 12	6	26.75"	10.80"	495lb	12 x 9	1-1/8"
TTA270912 MLX AI	27 x 9 R 12	6	27.50"	9.0"	440lb	12 x 7	1-1/8"
TTA271112 MLX AI	27 x 11 R 12	6	27.75"	10.80"	495lb	12 x 9	1-1/8"
TTA270914 MLX AI	27 x 9 R 14	6	27.50"	8.60"	1134lb	14 x 7	1-1/8"
TTA271114 MLX AI	27 x 11 R 14	6	27.75"	10.80"	1020lb	14 x 9	1-1/8"



AT489

Part Number	Size	Ply Rating	Mounted Diameter	Mounted Width	Load Capacity	Wheel Required	Tread Depth
TTA220710 489 A	22 x 7 - 10	3 Star	22.2"	7.0"	255lb	10 x 6	5/8"
TTA221010 489 A	22 x 10 - 10	3 Star	21.7"	9.9"	355lb	10 x 8	5/8"
TTA221110 489 A	22 x 11 - 10	4	22.2"	10.6"	330lb	10 x 9	5/8"
TTA230710 489 A	23 x 7 - 10	2 Star	22.7"	6.5"	240lb	10 x 5.5	5/8"
TTA230810 489 A	23 x 8 - 10	3 Star	23.2"	7.9"	300lb	10 x 6.5	5/8"
TTA231010 489 A	23 x 10 - 10	3 Star	23.4"	9.5"	375lb	10 x 8	5/8"
TTA249510 489 A	24 x 9.50 - 10	3 Star	24"	9.50"	1410lb	10 x 7.75	5/8"
TTA241110 489 A	24 x 11 - 10	3 Star	24.0"	9.7"	440lb	10 x 9	5/8"
TTA241210 489 A	24 x 12 - 10	3 Star	24.50"	12"	1740lb	10 x 9.5	5/8"
TTA251110 489 A	25 x 11 - 10	3 Star	25.1"	10.6"	455lb	10 x 9	5/8"
TTA230811 489 A	23 x 8 - 11	3 Star	23.7"	7.5"	290lb	11 x 6.5	5/8"
TTA240811 489 A	24 x 8 - 11	3 Star	24.5"	8.4"	320lb	11 x 6.5	5/8"
TTA240911 489 A	24 x 9 - 11	3 Star	24.5"	8.6"	365lb	11 x 7	5/8"
TTA241011 489 A	24 x 10 - 11	3 Star	24.4"	9.6"	395lb	11 x 8	5/8"
TTA220712 489 A	22 x 7 - 12	3 Star	22.4"	6.7"	240lb	12 x 6	5/8"
TTA221012 489 A	22 x 10 - 12	3 Star	22.3"	9.3"	340lb	12 x 8	5/8"
TTA230812 489 A	23 x 8 - 12	3 Star	23.1"	7.4"	280lb	12 x 6.5	5/8"
TTA231012 489 A	23 x 10 - 12	3 Star	23.1"	9.0"	365lb	12 x 8	5/8"
TTA240812 489 A	24 x 8 - 12	3 Star	23.8"	8.0"	455lb	12 x 6.5	5/8"
TTA240912 489 A	24 x 9 - 12	2 Star	23.8"	8.9"	265lb	12 x 8	5/8"
TTA241112 489 A	24 x 11 - 12	3 Star	24.4"	10.1"	430lb	12 x 9	5/8"
TTA250812 489 A	25 x 8 - 12	3 Star	25.2"	7.5"	340lb	12 x 6.5	5/8"
TTA251012 489 A	25 x 10 - 12	3 Star	25.2"	9.1"	420lb	12 x 8	5/8"
TTA251112 489 A	25 x 11 - 12	4	25.4"	10.6"	455lb	12 x 8	5/8"
TTA261012 489 A	26 X 10 - 12	2 Star	25.7"	9.8"	385lb	12 x 8	5/8"



ALL TRAIL / ALL TRAIL II

Part Number	Size	Ply Rating	Mounted Diameter	Mounted Width	Load Capacity	Wheel Required	Tread Depth
TTA201008 AT A	20 x 10 - 8	4	20.2"	9.3"	1190lb	8 x 7	5/8"
TTA221008 AT A	22 x 10 - 8	4	22.0"	10.1"	1350lb	8 x 7	5/8"
TTA201010 AT A	20 x 10 - 10	4	20.1"	8.9"	1160lb	10 x 6	5/8"
TTA229510 AT A	22 x 9.50 - 10	4	22.0"	9.5"	1280lb	10 x 7.75	5/8"
TTA221110 AT A	22 x 11 - 10	4	21.9"	10.2"	1475lb	10 x 8	5/8"
TTA249510 AT A	24 x 9.50 - 10	4	24.0"	9.7"	1410lb	10 x 7.5	5/8"
TTA241510 AT A	24 x 10.50 - 10	4	24.5"	10.8"	1490lb	10 x 8	5/8"
TTA230812 AT A	23 x 8 - 12	4	23.2"	8.4"	1125lb	12 x 6.5	1/2"
TTA231012 AT A	23 x 10.50 - 12	4	23.1"	9.9"	1340lb	12 x 7	1/2"
TTA250812 AT A	25 x 8 - 12	4	25.0"	8.3"	1305lb	12 x 7	1/2"
TTA251012 AT A	25 x 10.50 - 12	4	24.7"	10.2"	1570lb	12 x 7	1/2"

**TRAIL WOLF**

Part Number	Size	Ply Rating	Mounted Diameter	Mounted Width	Load Capacity	Wheel Required	Tread Depth
TTA190808 TW A	19 x 8 - 8	2	19.0"	7.1"	200lb	8 x 6	5/8"
TTA200708 TW A	20 x 7 - 8	2	19.4"	6.8"	157lb	8 x 5.375	5/8"
TTA201108 TW A	20 x 11 - 8	4	20.2"	10.5"	340lb	8 x 9	5/8"
TTA221009 TW A	22 x 10 - 9	4	21.8"	10.0"	355lb	9 x 9	5/8"
TTA251209 TW A	25 x 12 - 9	4	25.6"	12.3"	430lb	9 x 10	5/8"
TTA201110 TW A	20 x 11 - 10	3 Star	19.9"	11.9"	280lb	10 x 10	5/8"
TTA220710 TW A	22 x 7 - 10	2	22.1"	6.8"	180lb	10 x 5.5	5/8"
TTA221010 TW A	22 x 10 - 10	2	23.5"	9.2"	245lb	10 x 8	5/8"
TTA251210 TW A	25 x 12 - 10	4	25.3"	11.6"	430lb	10 x 10	5/8"
TTA230811 TW A	23 x 8 - 11	4	23.1"	7.6"	255lb	11 x 6.38	5/8"
TTA240911 TW A	24 x 9 - 11	4	24.4"	8.5"	316lb	11 x 7	5/8"
TTA250812 TW A	25 x 8 - 12	2	25.3"	7.5"	340lb	12 x 6.5	5/8"
TTA251012 TW A	25 x 10 - 12	2	25.5"	9.0"	340lb	12 x 8	5/8"

**HD FIELD TRAX**

Part Number	Size	Ply Rating	Mounted Diameter	Mounted Width	Load Capacity	Wheel Required	Tread Depth
TTA221208 FT A	22 x 12 - 8	3 Star	21.3"	11.7"	430lb	8 x 9.5	5/8"
TTA221008 FT A	22.5 x 10 - 8	3 Star	22.5"	10.2"	365lb	8 x 7	5/8"
TTA251309 FT A	25 x 13 - 9	3 Star	24.8"	12.4"	535lb	8 x 10.5	5/8"
TTA188510 FT A	18 x 8.50 - 10	4	18.2"	7.4"	830lb	10 x 7	5/8"
TTA241212 FT A	24 x 12 - 12	2	24.0"	11.6"	1135lb	12 x 9.5	5/8"
TTA261212 FT A	26 x 12 - 12	2	25.6"	11.8"	1185lb	12 x 9.5	5/8"





SCORPION K290

Part Number	Size	Ply Rating	Mounted Diameter	Mounted Width	Load Capacity	Wheel Required	Tread Depth
TTA147006 SC IK	145 / 70 - 6	2	14.3"	5.3"	165lb	6 x 4.5	N/A
TTA189508 SC IK	18 x 9.50 - 8	2	18.6"	8.8"	225lb	8 x 7	N/A
TTA221108 SC IK	22 x 11 - 8	2	22.0"	9.8"	340lb	8 x 9	N/A
TTA251209 SC IK	25 x 12 - 9	2	24.0"	10.8"	430lb	9 x 9	N/A



KNOBBY

Part Number	Size	Ply Rating	Mounted Diameter	Mounted Width	Load Capacity	Wheel Required	Tread Depth
TTA147006 KB A	145 / 70 - 6	2	14.3"	5.3"	80lb	6 x 4.5	N/A
TTA189508 DK A	18 x 9.50 - 8	2	18.3"	8.8"	625lb	8 x 7	N/A
TTA221108 KB A	22 x 11 - 8	2	22.3"	10.5"	495lb	8 x 9	N/A
TTA251209 KB A	25 x 12 - 9	2	24.6"	11.8"	430lb	9 x 10	N/A



TURF TAMER

Part Number	Size	Ply Rating	Mounted Diameter	Mounted Width	Load Capacity	Wheel Required	Tread Depth
TTA221008 TT4 A	22.5 x 10 - 8	4	22.8"	9.2"	1390lb	8 x 8	N/A
TTA251209 TT A	25 x 12 - 9	3 Star	25.3"	11.2"	495lb	9 x 9.5	N/A
TTA201110 TT A	20 x 11 - 10	3 Star	20.0"	10.7"	330lb	10 x 9	N/A

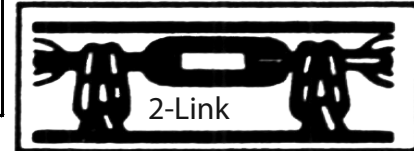
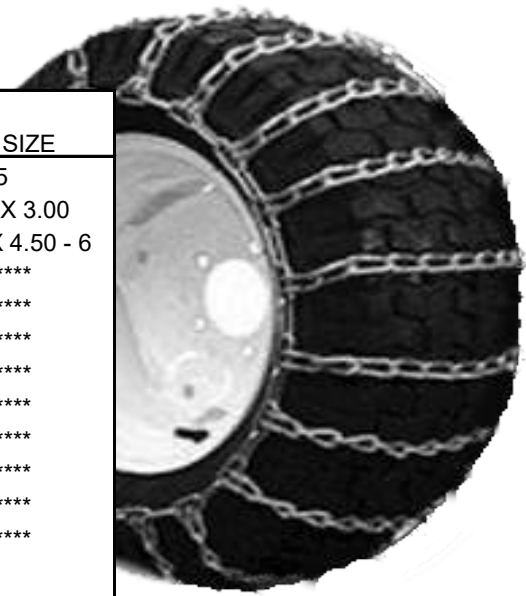


STRYKER

Part Number	Size	Ply Rating	Mounted Diameter	Mounted Width	Load Capacity	Wheel Required	Tread Depth
TTA221108 ST A	22 x 11 - 8	Belted	22.6"	11.1"	340lb	8 x 9	N/A
TTA221109 ST A	22 x 11 - 9	Belted	22.6"	11.2"	340lb	9 x 10	N/A
TTA251209 ST A	25 x 12 - 9	Belted	25.2"	12.2"	430lb	9 x 10	N/A
TTA221110 ST A	22 x 11 - 10	2	22.9"	10.1"	330lb	10 x 8.25	N/A

Lawn & Garden

Part Number	# of Links	FITS TIRE SIZE	ALSO FITS TIRE SIZE
MWTC 354	2	4.10 / 3.50 - 4	3.40 / 3.00 - 5
MWTC 356	2	4.10 / 3.50 - 6	4.10 / 3.50 - 5 , 12 X 3.00
MWTC 506	2	13 X 5.00 - 6	13 X 4.00 - 6 , 12.5 X 4.50 - 6
MWTC 456	2	5.30 / 4.50 - 6	*****
MWTC 408	2	4.80 / 4.00 - 8	*****
MWTC 658	2	16 X 6.50 - 8	*****
MWTC 8658	2	18 X 6.50 - 8	*****
MWTC 858	2	18 X 8.50 - 8	*****
MWTC 858 4	4	18 X 8.50 - 8	*****
MWTC 958	2	18 X 9.50 - 8	*****
MWTC 958 4	4	18 X 9.50 - 8	*****
MWTC 1008	2	20 X 10 - 8	*****
MWTC 810	2	20 X 8 - 10	20 X 8 - 8
MWTC 1010	2	20 X 10 - 10	*****
MWTC 1010 4	4	20 X 10 - 10	*****
MWTC 8512 2	2	23 X 8.50 - 12	22.5 X 7.50 - 12
MWTC 8512 4	4	23 X 8.50 - 12	22.5 X 7.50 - 12
MWTC 1012 2	2	23 X 10.50 - 12	23 X 9.50 - 12
MWTC 1012 4	4	23 X 10.50 - 12	23 X 9.50 - 12
MWTC 1212	2	26 X 12 - 12	*****



To Fit Snow Hog Tires

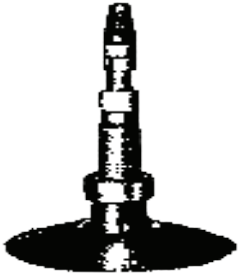
Part Number	# of Links	FITS TIRE SIZE
MWTC 356 SH	2	4.10 / 3.50 - 6
MWTC 506 SH	2	13 X 5.00 - 6
MWTC 408 SH	2	4.80 / 4.00 - 8
MWTC 658 SH	2	16 X 6.50 - 8



V-Bar For ATV's

Part Number	# of Links	FITS TIRE SIZE	FITS TIRE SIZE	FITS TIRE SIZE
MWTC A133568 2	2	22 x 7 - 10, 22 x 8 - 10 22 x 9 - 10, 22 x 10 - 10	23 x 7 - 10, 23 x 8 - 10	24 x 11 - 10, 22 x 8 - 11
MWTC A133570 2	2	22 x 9 - 8, 22 x 11 - 8 22 x 10 - 9, 22 x 11 - 9	22 x 11 - 10, 24 x 11 - 10 22 x 10 - 11, 23.5 x 8 - 11	24 x 8 - 11, 24 x 8 - 12
MWTC A133571 2	2	23 x 10 - 10, 24 x 9 - 11 24 x 10 - 11, 24 x 11 - 11	23 x 10 - 12, 24 x 9 - 12 24 x 10 - 12, 24 x 11 - 12	25 x 8 - 12, 26 x 8 - 12
MWTC A133572 2	2	25 x 11 - 9, 25 x 12 - 9 25 x 11 - 10, 25 x 12 - 10	25 x 10 - 12, 25 x 11 - 12 26 x 10 - 12, 26 x 11 - 12	26 x 12 - 12
MWTC A133575 4	4	22 x 7 - 10, 22 x 8 - 10 22 x 9 - 10, 23 x 7 - 10	23 x 8 - 10, 23 x 11 - 10	23 x 8 - 11
MWTC A133576 4	4	22 x 9 - 8, 22 x 10 - 8 22 x 11 - 8, 20 x 10 - 9	22 x 10 - 9, 22 x 11 - 9 22 x 10 - 10, 22 x 11 - 10	24 x 11.5 - 10, 22 x 10 - 11 23.5 x 8 - 11, 24 x 8 - 11, 24 x 8 - 12
MWTC A133577 4	4	23 x 10 - 10, 24 x 11 - 10 24 x 9 - 11, 24 x 10 - 11	24 x 11 - 11, 23 x 10 - 12 24 x 9 - 12, 24 x 10 - 12	24 x 11 - 12, 24 x 11.5 - 12 25 x 8 - 12, 26 x 8 - 12
MWTC A133578 4	4	25 x 11 - 9, 25 x 12 - 9 25 x 11 - 10, 25 x 12 - 10	25 x 10 - 12, 25 x 11 - 12 26 x 10 - 12, 26 x 11 - 12, 26 x 12 - 12	

ATV Tubes



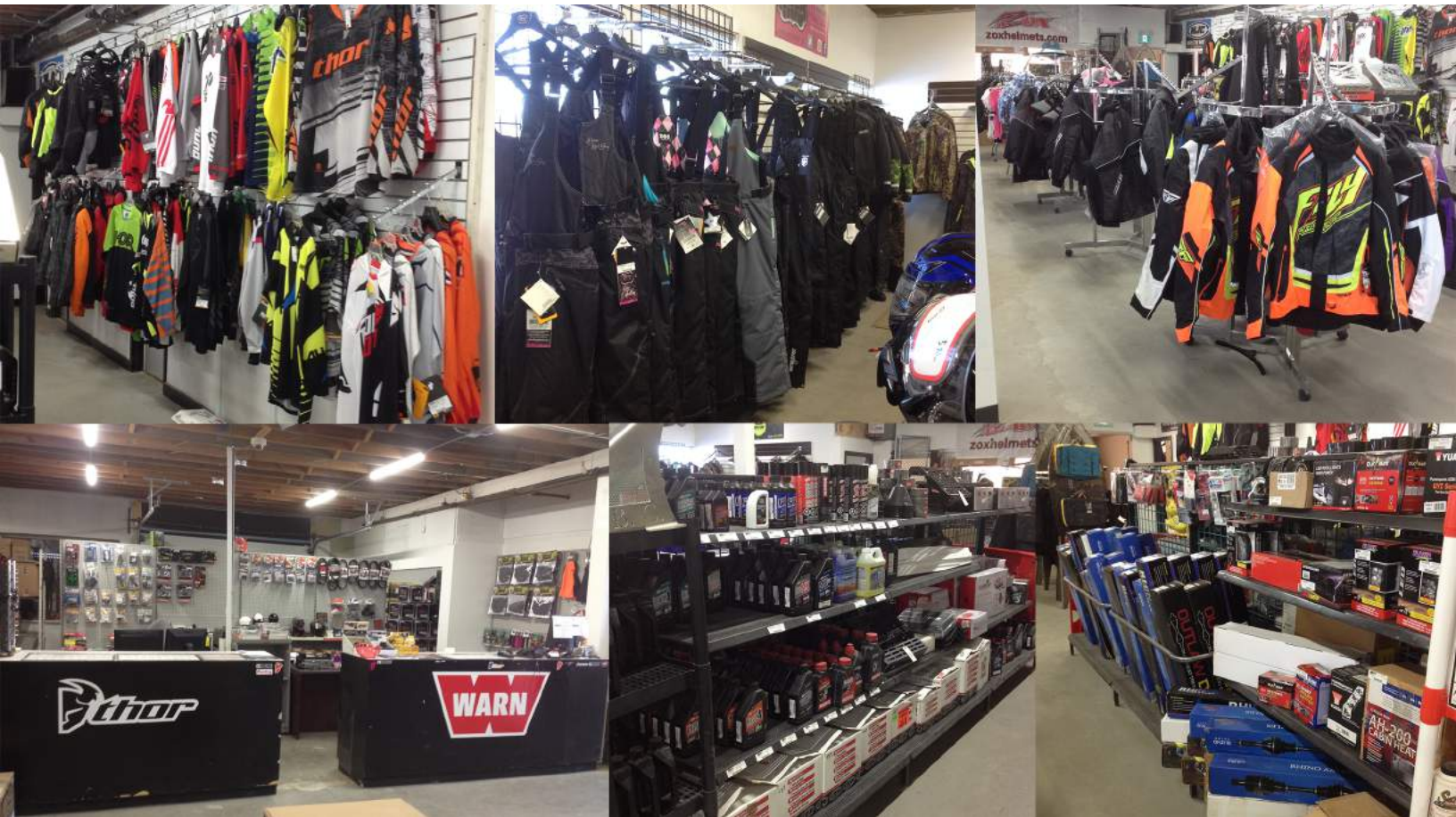
TR-6

Part Number	Description
TTT160807 6 I	16x8.00-7 ATV TUBE TR-6 Valve
TTT20708 6 I	20x7-8 ATV TUBE TR-6 Valve
TTT22118 6 I	22x11-8 ATV TUBE TR-6 Valve
TTT22119 6 I	22x11-9, 22x10-9 ATV TUBE TR-6 Valve
TTT25129 6 I	25x12-9 ATV TUBE TR-6 Valve
TTT21710 6 I	21x7-10, 20.5x8-10, 22x8-10 ATV TUBE TR-6 Valve
TTT22110 6 I	22x11-10 ATV TUBE TR-6 Valve
TTT241110 6 I	24x11-10, 25x11-10 ATV TUBE TR-6 Valve
TTT24911 6 I	23x8-11, 23.5x8-11, 24x9-11 ATV TUBE TR-6 Valve
TTT25112 6 I	25x8-12/25x10-12 ATV TUBE TR-6 Valve
TTT1212R 6 I	AT24x12/26x12R -12 RADIAL ATV TUBE TR-6 Valve

* TRAILER, INDUSTRIAL, AGRICULTURAL, RADIAL, LAWN & GARDEN TUBES ARE ALSO AVAILABLE.

CENTURY POWERSPORTS

880 CENTURY ST. WINNIPEG



Visit us online for our most up-to-date catalogues, products and pricing!



HIGHLIFTER



SEDONA
TIRE AND WHEEL



Specialty
Tire & Tube

Winnipeg

880 Century St.
Winnipeg, MB,
Canada, R3H 0M5
Tel: (204) 783-5497
Fax: (204) 786-5997
Toll Free: 888-716-8686
info@specialtytire.ca

Specialty
Tire & Tube

Calgary

421 53rd Ave
Calgary, AB,
Canada, T2H 1K8
Tel: (403) 252-3055
Fax: (403) 287-3503
Toll Free: 800-661-6600
infocal@specialtytire.ca

DEALER:

www.specialtytire.ca