



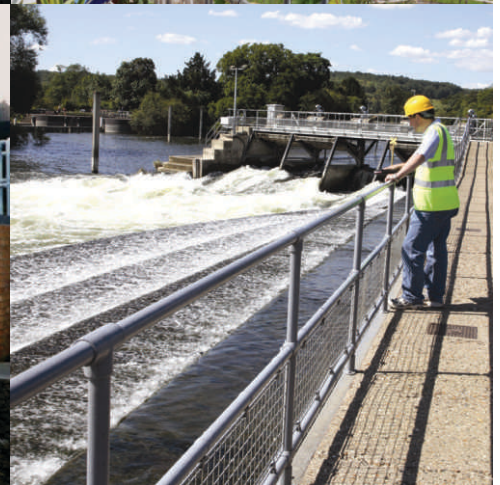
Casterland

1-800-661-6600

Kee®
Klump

Components Guide

YOU'LL NEVER BE BETTER PROTECTED



- DURABLE GALVANIZED FINISH
- INDEPENDENTLY TESTED, MEETS OR EXCEEDS SAFETY STANDARDS
- NO WELDING, BENDING, OR THREADING OF PIPE
- UNLIMITED NUMBER OF APPLICATIONS



Serving our customers since 1975!

www.Casterland.com

WINNIPEG • CALGARY • EDMONTON • SURREY

Specifying KEE KLAMP Components

Each fitting has a numerical code reference which defines the type of fitting and the pipe sizes, or sizes, it is designed to receive. The first number, preceding the dash (-) identifies the type of KEE KLAMP component. A single digit, following dash, defines the pipe size. Two single digits after dash indicate that the fitting is designed to receive two sizes of pipe. The KEE KLAMP pipe chart is located to the right.

pipe reference	component inner dia (in.)	nominal bore (in.)	pipe outer dia (in.)	tube outer dia (in.)
2	0.59	0.25	.54	0.531
3	0.76	0.375	.68	0.688
4	0.87	0.5	.84	0.844
5	1.09	0.75	1.05	1
6	1.38	1	1.32	1.313
7	1.72	1.25	1.66	1.625
8	1.94	1.5	1.9	1.875
9	2.41	2	2.38	2.375





P50 Offset Single Tab Panel Fitting With Slot

P50-8



P51 Offset Double Tab Panel Fitting with Slot

P51-8



55 Split Tee

55-6 55-8
55-7



M58 Base Plate

M58-8



62 Standard Railing Flange

62-2 62-7
62-5 62-8
62-6 62-9



65 Standard Horizontal Railing Base

65-6



68 Wall Flange

68-6 68-8
68-7



71 Weather Cap

71-6 71-8
71-7



77 Plastic Plug

77-4 77-7
77-5 77-8
77-6 77-9



82 Double Sided Clip

82-5 82-8
82-6 82-9
82-7



C51 Double Swivel Socket

C51-555 C51-888
C51-666 C51-999
C51-777



C52 Corner Swivel Socket

C52-555 C52-777
C52-666 C52-888



56 Acute Angle Elbow

56-8



59 Spigot Flange

59-5 59-8
59-6 59-9
59-7



262 Round Base Flange

262-8



265 Offset Railing Base

265-7
265-8



69 Base Flange & Kick Plate

69-7
69-8



72 Stair Tread Support

72-8



78 Eye Fitting

78-5 78-7
78-6 78-8



83 Pin Fitting

83-5 83-7
83-6 83-8



M51 Male Double Swivel Socket Member

M51-5 M51-8
M51-6 M51-9
M51-7



M52 Male Corner Swivel Socket Member

M52-5 M52-7
M52-6 M52-8



P57 Deck Bracket

P57-7
P57-8



60 Extra Heavy Flange

60-5 60-7
60-6 60-8



63 Angle Base Flange

63-6 63-8
63-7



66 Ground Socket

66-6 66-8
66-7



115 Horizontal Railing Base

115-6 115-8
115-7



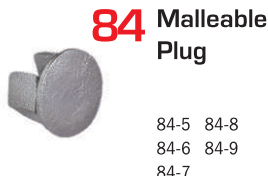
75 Collar

75-4 75-7
75-5 75-8
75-6



79 Sheeting Clip

79-7



84 Malleable Plug

84-5 84-8
84-6 84-9
84-7



MH51 Male Double Horizontal Socket

MH51-6



BC53 Swivel Elbow

BC53-8



C58 Swivel Flange

C58-5 C58-8
C58-6 C58-9
C58-7



61 Flange

61-3 61-7
61-4 61-8
61-5 61-9
61-6



64 Standard Vertical Railing Base

64-6 64-8
64-7



67 Angle Flange

67-8



70 Rail Support

70-5 70-7
70-6 70-8



76 Hook

76-5 76-7
76-6 76-8



81 Single Sided Clip

81-4 81-7
81-5 81-8
81-6 81-9



86 Angle Tee

+/-11°

86-8

87 Angle Elbow



+/-11°

87-8

88 Three Socket Angle Tee



+/-11°

88-8

89 Two Socket Angle Cross



+/-11°

89-8

97 Set Screws



97-2 97-6
97-3 97-7
97-4 97-8
97-5 97-9

100 Plastic Set Screw Caps



100-5 100-8
100-6 100-9
100-7

105 Profiled or Flat Sheeting Clip



105-6 105-8
105-7 105-9

114 Swivel Tee



114-2 114-7
114-6 114-8

118 Cover Flange



118-8

121 Corner Crossover



121-7

316 Parapet Flange



316-7
316-8

350 Eaves Fitting



350-8

351 Ridge Fitting



351-9

options

Pipe Choices

Galvanized Steel

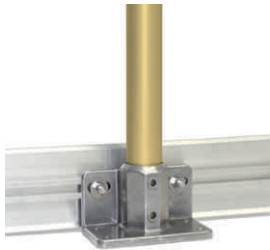
Schedule 40 and Schedule 80; size 1/4" to 2" IPS; nominal mill lengths of 21' cut to your projects' exact length requirements

Powder Coating

Durable, corrosion preventing polyester coating applied to already galvanized/anodized products; available in any RAL color

Antimicrobial Coating

Defense against the growth of potentially harmful invisible bacteria and fungi; this powder coating can be applied in a wide range of RAL colors



Toeboards

Our unique design does not require any drilling on site or in the shop. A slot on the back of the toeboard accepts a bolt head which prevents the bolt from spinning during assembly. Upright hardware and splice kits for corners and straight sections are also available. Toeboard comes

Grip Tape

Improves grip of existing handrail. Grip Tape has a glow-in-the-dark feature for added safety. Yellow and black coloring is also available.



Hi-Traction Covers

Improves footing and helps to prevent slips and falls. Suitable for indoor and outdoor use. Variety of grip options, colors, sizes, and materials. Glow-in-the-dark and custom printing available.



In-fill Panels

Panels come in a variety of materials, sizes, and finishes. The standard 4" x 4" welded wired mesh is available in sizes up to 4' wide by 8' long. Smaller openings are available (2" x 2" or 1" x 1"). Material can be provided with a galvanized or powder coat finish, or in bare stainless steel. Virtually any

1-800-661-6600

875 Century St.
Winnipeg, MB
R3H 0M3
Tel: (204) 783-5500
Fax: (204) 775-7977
info@casterland.com

5505-4th Street S.E.
Calgary, AB
T2H 1K8
Tel: (403) 243-3553
Fax: (403) 287-3503
infocal@casterland.com

3 - 9743 - 51 Ave. NW
Edmonton, AB
T6E 4W8
Tel: (780) 432-5575
Fax: (780) 432-5780
infoedm@casterland.com

103 - 13177 76 Avenue
Surrey, BC
V3W 2V7
Tel: (604) 543-7744
Fax: (604) 543-7966
infobc@casterland.com

www.Casterland.com