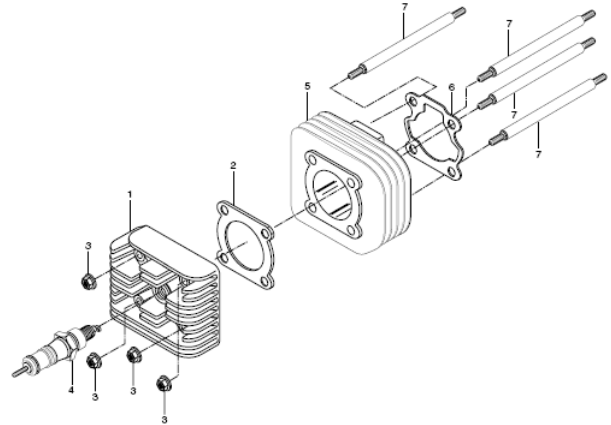


# FIG 1. CYLINDER

REF.	PART NAME	(PCS)	
1	11111H11200	CYLINDER HEAD	1
2	11141-02110	GASKET,cylinder head	1
3	08316-16068	NUT,cylinder head(M6)	4
4	09482-01059	PLUG,spark(BP6HS)	1
5	11211HG2602PCY	CYLINDER	1
6	11241HF1602	GASKET,cylinder	1
7	01421-06858	STUD BOLT,cylinder (M6*85)	4

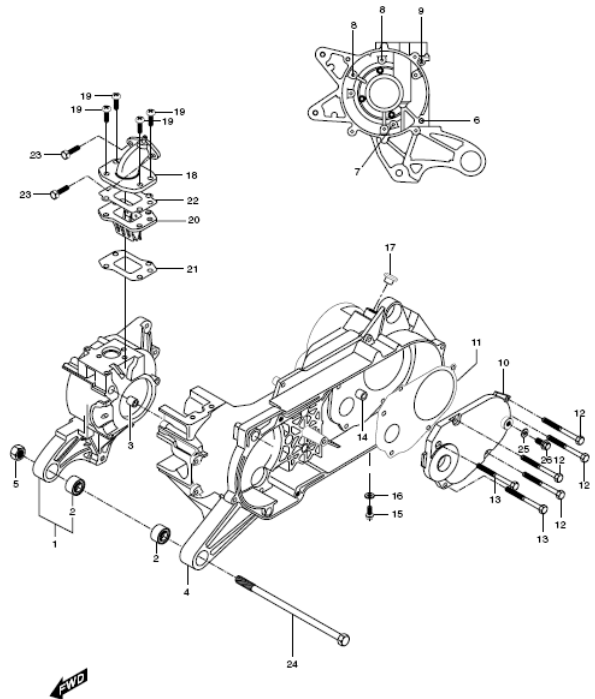
FIG 1



# FIG 2. CRANK CASE

REF.	PARTS NAME	(PCS)
NO. ST2		
1	11310H11207PCC CASE,crank R	1
2	09319-10027 BUSH,engine mounting	2
3	04213-09129 KNOCK PIN,crank case	2
4	11320HK3103PCC CASE,crank L	1
5	08316-26108 NUT,engine mount(M10)	1
6	02112-06508 SCREW,crank case(M6*50)	1
7	02112-06458 SCREW,crank case(M6*45)	1
8	02112-06408 SCREW,crank case(M6*40)	2
9	02112-06558 SCREW,crank case(M6*55)	1
10	11431HD2100PCR COVER,gear box	1
11	11484H11203 GASKET,gear box cover	1
12	01547-06208 BOLT,gear box cover(M6*20)	4
13	01547-06308 BOLT,gear box cover(M6*30)	2
14	04213-09129 KNOCK PIN,gear box cover	2
15	09247-100A8 PLUG,oil drain	1
16	09168H10003 GASKET,oil drain bolt	1
17	09250H11005 PLUG,oil filler	1
18	13110HK3100 PIPE COMP,intake	1
19	02112-96256 SCREW,intake pipe(M6*25)	4
20	13150HF1600 VALVE ASS'Y,reed	1
21	13125HF1601 GASKET,reed valve	1
22	13126HF1601 GASKET,intake pipe	1
23	09137H06021 SCREW,carburetor(M6/20)	2
24	09103H10122 BOLT,engine mount(M10*195)	1
25	09168-08008 GASKET,oil level bolt	1
26	01514-08128 BOLT,oil level(M8*12)	1

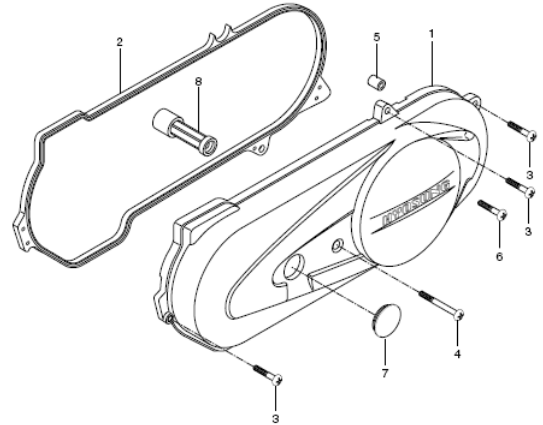
FIG 2



# FIG 3. CLUTCH

REF.	PARTS NAME	(PCS)
NO. ST2		
1	11340HK3100 COVER,clutch	1
2	11452HF1602 GASKET,clutch cover	1
3	02112-06255 SCREW,clutch cover(M6*65)	3
4	02112-06605 SCREW,clutch cover(M6*65)	1
5	09180H06013 SPACE,clutch cover	1
6	02112-06505 SCREW,clutch cover(M6*50)	1
7	11345HK3100 CAP,clutch cover	1
8	11346HK3100 SPACER,clutch cover center	1

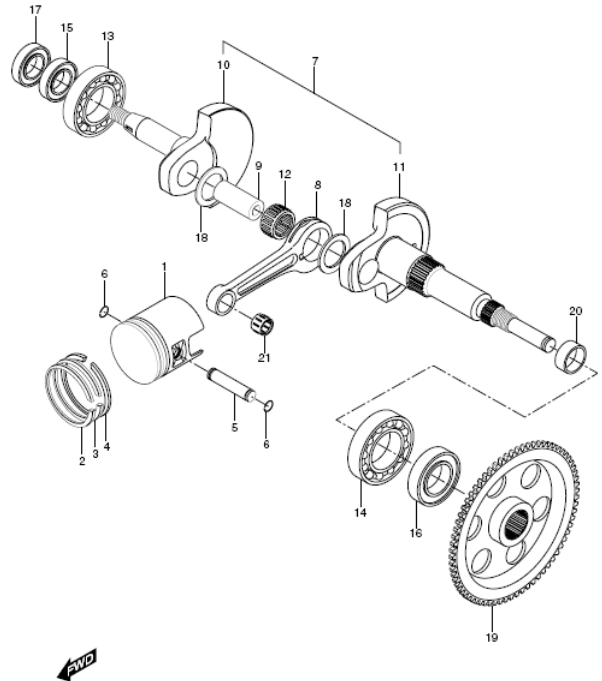
FIG 3



# FIG 4. CRANK SHAFT

REF.	PARTS NAME		(PCS)
NO. ST2			
1	12110H11214PSA	PISTON,comp	1
2	12141-35010	RING,piston 1st	1
3	12142-29C10	RING,piston 2nd	1
4	12149-29C10	RING,piston expander	1
5	12151-46501	PIN,piston	1
6	09381-10006	CIRCLIP,piston pin	2
7	12200H11200HPA	CRANKSHAFT,assy	1
8	12161-37B02	ROD,connecting	1
9	12211H11201888	PIN,crank	1
10	12221H11201CSA	CRANKSHAFT,R	1
11	12261H11A00CSA	CRANKSHAFT,L	1
12	09263H16004	BEARING,crank pin(16*22*12)	1
13	09262H250A2	BEARING,crank shaft R(28*68*18)	1
14	09262H250A2	BEARING,crank shaft L(28*68*18)	1
15	09283-25083	SEAL,crankshaft oil L(25*37*6))	1
16	09283-25083	SEAL,crankshaft oil R No.2(25*37*6)	1
17	09284-20051	SEAL,crankshaft oil R No.1(20*42*6)	1
18	09160H16040	WASHER,connecting rod thrust	1
19	12620H11A00	GEAR,starter driven	1
20	09180H18005	SPACER,crankshaft oil seal	1
21	09263H10003	BEARING,piston pin(10*14*12.5)	1

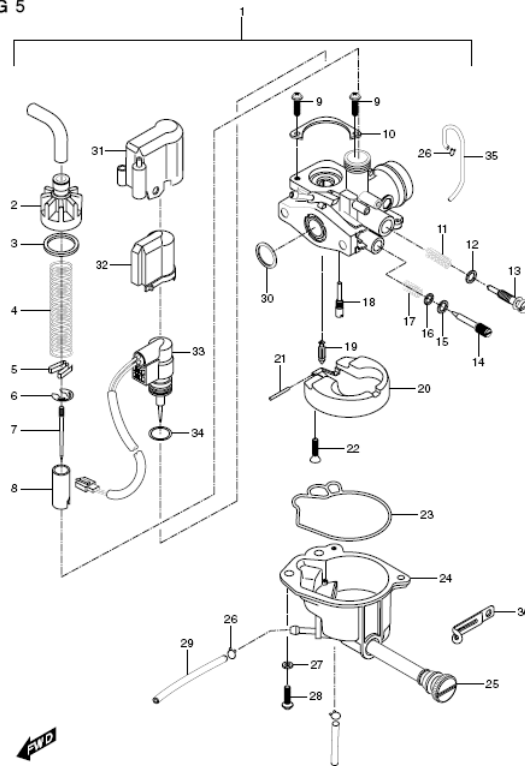
FIG 4



# FIG 5. CARBURETOR ASS'Y

REF.	PARTS NAME	(PCS)	
NO. ST2			
1	13091HK3100HAS	CARBURETOR,assy	1
2	13681HF1600	CAP,carburetor top	1
3	13249HF1600	GASKET,top cover	1
4	13573HF1600	SPRING, throttle valve	1
5	13581HF1600	CLIP	1
6	13533HF1600	E-RING	1
7	13383HF1600	JET, needle	1
8	13551HF1600	VALVE, throttle	1
9	13601HF1600	SCREW	2
10	13610HF1600	RETAINER	1
11	13265HF1600	SPRING	1
12	13266HF1600	WASHER	1
13	13267HF1600	SCREW, throttle stop	1
14	13269HF1600	SCREW, pilot air	1
15	13606HF1600	WASHER	1
16	13295HF1600	O-RING	1
17	13268HF1600	SPRING	1
18	09492HF1600	JET, pilot	1
19	13370HF1600	VALVE, needle	1
20	13250HF1600	FLOAT	1
21	13254HF1600	PIN, float	1
22	02112HF1600	SCREW	1
23	13258HF1600	GASKET, float body	1
24	13245HF1600	BODY, float	1
25	13247HF1600	SCREW, drain	1
26	09401-08401	CLIP	2
27	08321HF1600	WASHER	1
28	02112-04126	SCREW	2
29	13683HF1600	HOSE	1
30	13277HF1600	O-RING	1
31	13630HF1600	CAP, holder outer	1
32	13640HF1600	CAP, holder outer	1
33	13430HK3100	ELEMENT ASS'Y, thermo	1
34	13650HF1600	O-RING, element thermo	1
35	13684HF1600	HOSE, air vent	1
36	09404-06401	CLAMP,carburetor drain	1

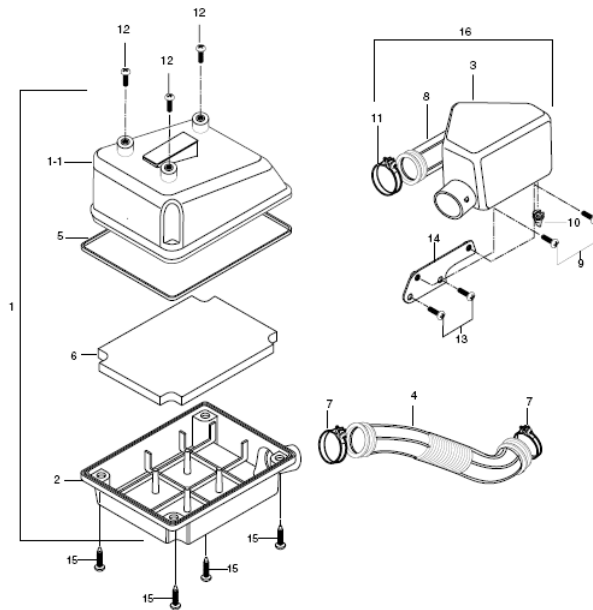
FIG 5



# FIG 6. AIR CLEANER

REF.	PARTS NAME	(PCS)
NO. ST2		
1	13700HK3104 CLEANER,assy air	1
1-1	13721HK3103 CASE,air cleaner	1
2	13740HK3101 CAP COMP,air cleaner	1
3	13821HK3102 CHAMBER,air cleaner	1
4	13831HK3101 TUBE, connecting	1
5	13736HK3100 GASKET,air cleaner	1
6	13781HK3100 FILTER,air cleaner	1
7	09402-36207 CLAMP, tube connecting	2
8	13881HK3100 TUBE, outlet	1
9	02112-06168 SCREW,air cleaner chamber(M6*16)	2
10	13861HE7100 TUBE, drain	1
11	09402-34207 CLAMP, outlet tube	1
12	02112-16166 SCREW,air cleaner(M6*16)	3
13	02142-05128 SCREW(M5*12)	2
14	13825HK3101 BRACKET,air cleaner chamber	1
15	03142-05169 SCREW(M5*16)	4
16	13820HK3103 CHAMBER,assy air cleaner	1

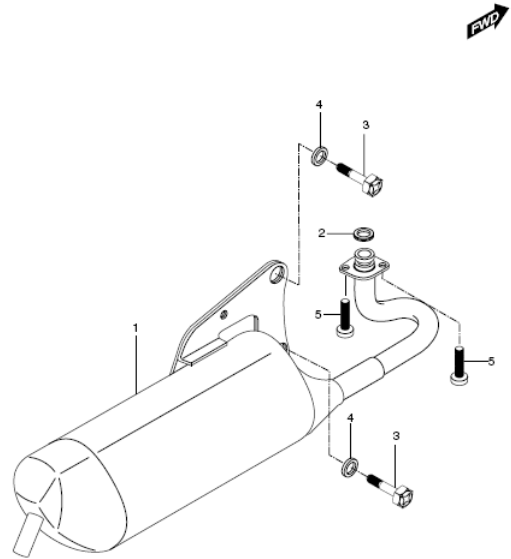
FIG 6



# FIG 7. MUFFLER

REF.	PARTS NAME	(PCS)
NO. ST2		
1	14310HK3103PAM BODY COMP,muffler	1
2	14181HG2600 GASKET,exhaust pipe	1
3	09128-08001 BOLT,muffler(M8*20)	2
4	08321-31088 WASHER,muffler	2
5	01137-06258 BOLT,exhaust pipe(M6*25)	2

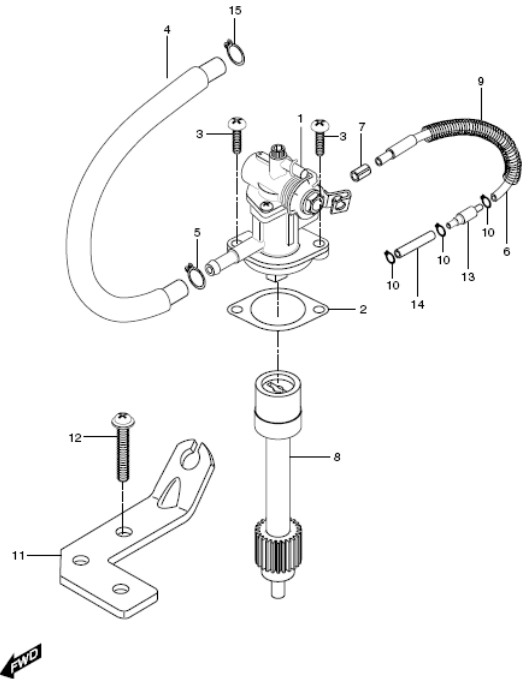
FIG 7



# FIG 8. OIL PUMP

REF.	PARTS NAME		(PCS)
NO. ST2			
1	16100HK3101	PUMP,ASS'Y oil	1
2	16731H11202	GASKET,oil pump	1
3	02112-35168	SCREW,oil pump(M5*16)	2
4	16821HK3100	HOSE,oil No.1	1
5	09401-08401	CLIP,oil hose No.1	1
6	16831HE1401	HOSE,oil No.2	1
7	09401-04401	CLIP	1
8	16331H11200	GEAR,oil pump pinion(NT:30)	1
9	09440-13019	SPRING,oil hose	1
10	09401H05404	CLIP	3
11	16630HB1100	BRACKET COMP, oil pump	1
12	02112-06108	SCREW,oil pump bracket(M6*10)	2
13	16910HB1400	VALVE COMP,oil hose No.2 check	1
14	16841HF1600	HOSE,oil No.3	1
15	09401H11401	CLIP	1

FIG 8

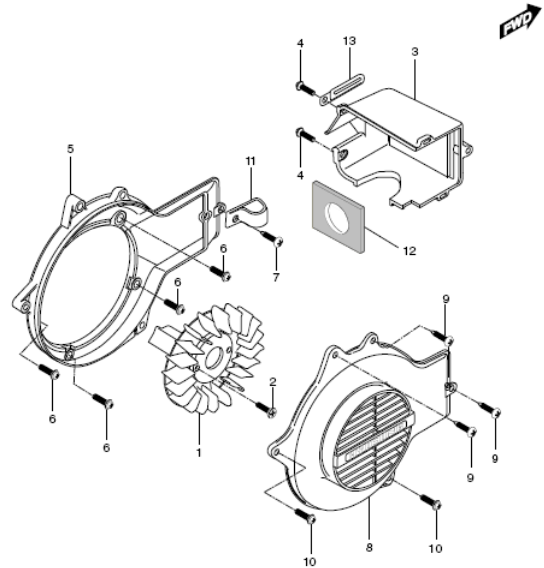




# FIG 9. COOLING

REF.	PARTS NAME	(PCS)
NO. ST2		
1	17110H11200 FAN COMP,cooling	1
2	02152-06168 SCREW(M6*12)	2
3	17120H11204 COWLING COMP,cylinder	1
4	02152-06168 SCREW(M6*12)	2
5	17140H11200 CASE COMP,fan	1
6	02152-06168 SCREW(M6*16)	4
7	03151-06205 SCREW(M6*20)	1
8	17130H11200 COOLING COMP,fan	1
9	03151-06205 SCREW(M6*20)	3
10	03141-06305 SCREW(M6*35)	2
11	09403-14404 CLAMP	1
12	17122H11200 CUSHION	1
13	09404-06401 CLAMP	1

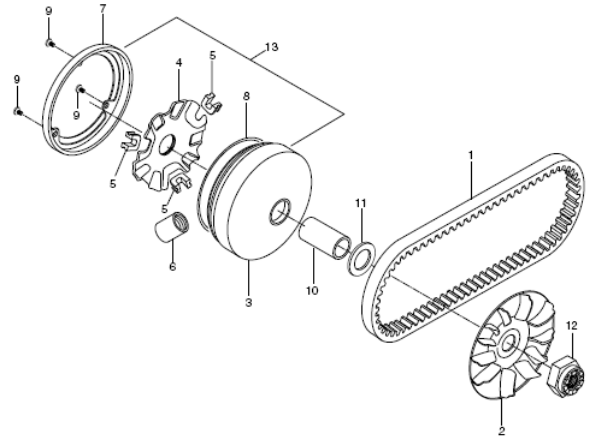
FIG 9



# FIG 10. TRANSMISSION

REF.	PARTS NAME		(PCS)
NO. ST2			
1	27601HB1100	V-BELT,drive	1
2	21110H11A02	FACE COMP,fixed drive	1
3	21120-25E02	FACE COMP,movable drive	1
4	21431H11A01	PLATE,movable drive	1
5	21481-29C21	DAMPER,movable drive face plate	3
6	21651S09E00HPA	ROLLER COMP,movable drive face	6
7	21122-37B01	COVER,movable drive face	1
8	21127-25E00	RING,movable drive	1
9	02142-04108	SCREW,movable drive face(M4*10)	3
10	09180-16041	SPACER,movable drive	1
11	SPACER,movable drive adjuster		1
12	08316-26108	NUT,kick starter driven(M12)	1

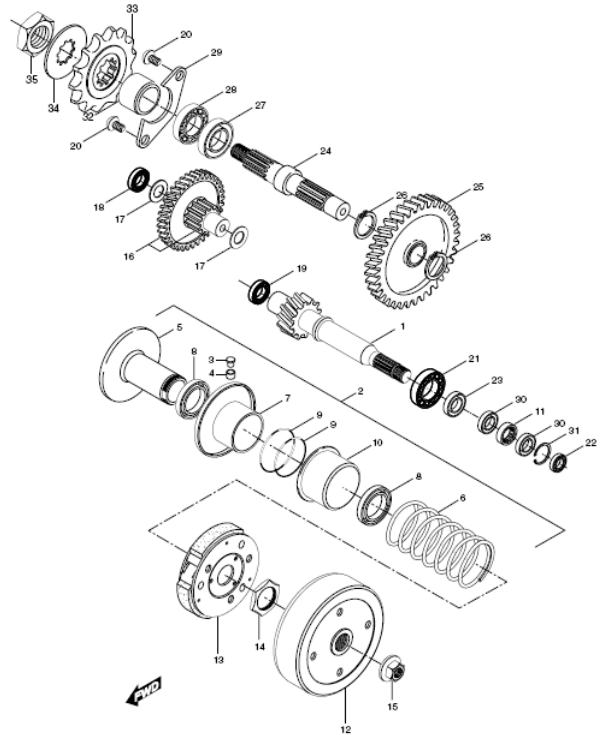
FIG 10



# FIG 11. TRANSMISSION(2)

REF.	PARTS NAME	(PCS)	
NO. ST2			
1	24111H11223	SHAFT,drive(14T)	1
2	21210S37B00	FACE SET,movable	1
3	09201H06002	PIN,movable driven	3
4	09180H06042	SPACER,movable driven pin	3
5	21210-37B00	FACE COMP,fixed driven	1
6	09440H52003	SPRING	1
7	21240-37B00	FACE COMP,movable driven	1
8	09284-34002	O-SEAL,movable driven(34*39*4)	2
9	09280-41005	O-RING,movable driven(39*1.6)	2
10	21471-03A02	SHEET,movable driven face	1
11	09263-17042	BEARING,fixed driven R(17*25*10)	1
12	21220-04C12	HOUSING COMP,clutch	1
13	21501-29C10	CLUTCH ASS'Y,shoe(NA)	1
14	09140H28004	NUT(M28)	1
15	08316-16105	NUT(M10)	1
16	24310H11A01HPA	GEAR ASS'Y,counter driven	1
17	09160-15034	THRUST WASHER,counter shaft R	2
18	08113-62010	BEARING(12*32*10)	2
19	08113-62020	BEARING(15*35*11)	1
20	02122-06168	SCREW,retainer(M6*16)	2
21	09262H17001	BEARING(17*47*14)	1
22	08120H69017	BEARING(12*24*6)	1
23	09283H17002	O-SEAL(17*27*5)	1
24	24141HK3100	SHAFT,rear axle 1	1
25	24331H11220	GEAR,final(40T)	1
26	08331-31229	CIRCLIP	1
27	09283-27010	O-SEAL(27*40*7)	1
28	08130-62047	BEARING(20*47*14)	1
29	24751H07900	RETAINER	1
30	09284H17002	O-SEAL(16*25*4)	1
31	08331-41249	CIRCLIP	1
32	27531HK3100	SPACER,rear axle shaft	1
33	27511HK3104	SPROCKET,engine(21T)	1
34	09167-20006	WASHER,engine sprocket knock	1
35	09140-16017	NUT,engine sprocket	1

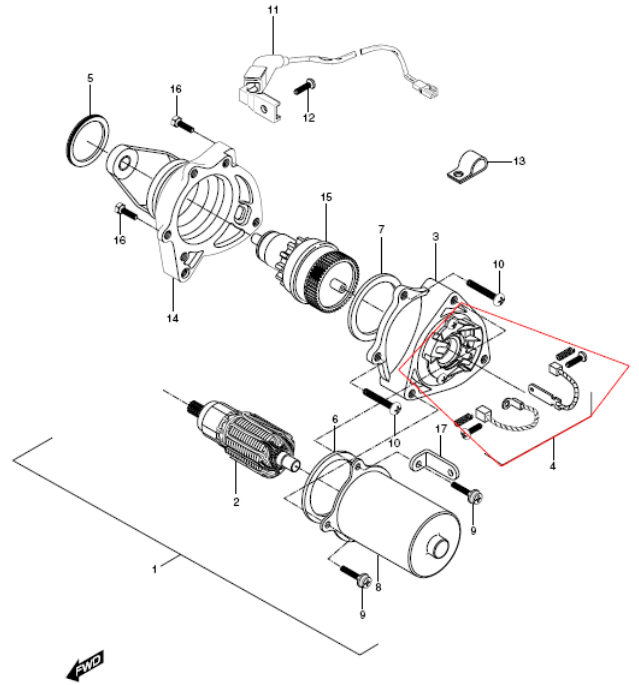
FIG 11



# FIG 12. STARTING MOTOR

REF.	PARTS NAME	(PCS)	
NO. ST2			
1	31100HK3101	MOTOR,starting	1
2	31311H11200	AMATEUR	1
3	31175-02100	FRAME	1
4	31130-02100	BRUSH SET	1
5	31156-02100	O-RING	1
6	31158-02540	GASKET	1
7	31158-02100	O-RING	1
8	31120HF1600	COVER,starting motor	1
9	31151-02100	SCREW A(M4*30)	3
10	31151-02540	SCREW B(M4*14)	2
11	31151-02100	LEAD WIRE	1
12	31152-02540	SCREW	1
13	31153H11A00	CLAMP, lead wire	1
14	31132H11200	HOLDER	1
15	31370H11200	PINION GEAR ASS'Y	1
16	02112-06608	SCREW,starting motor mounting(M6*60)	2
17	31154HB1100	CLAMP	1

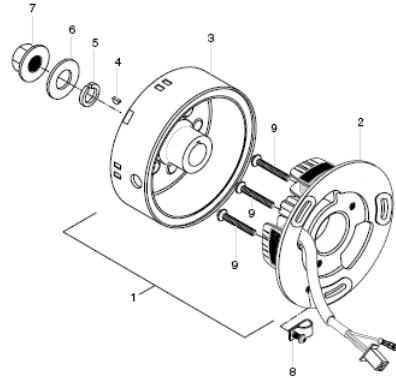
FIG 12



# FIG 13. MAGNETO

REF.	PARTS NAME		(PCS)
NO. ST2			
1	32100HL2300	MAGNETO,assy	1
2	32101HL2300	STATOR,assy	1
3	32102H11A00	ROTOR,assy	1
4	08341-31039	KEY,magneto	1
5	08322-21108	WASHER	1
6	08321-31108	LOCK WASHER,magneto	1
7	08316-26108	NUT,magneto rotor(M10)	1
8	09404-16404	CLAMP,magneto lead wire	1
9	09132H05128	SCREW,magneto stator(M5*12)	3

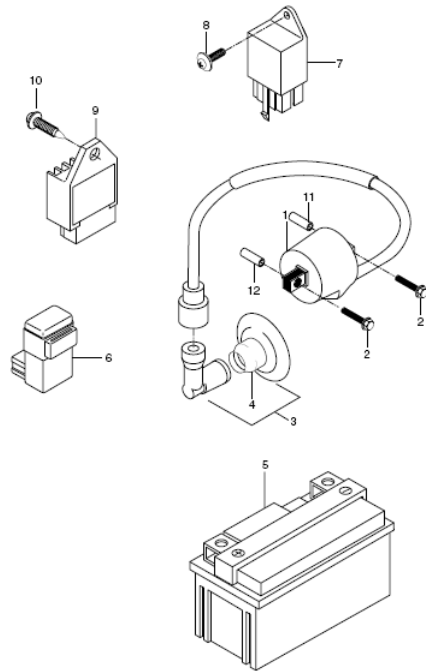
FIG 13



# FIG 14. ELECTRICAL

REF.	PARTS NAME	(PCS)
NO. ST2		
1	33410HK3101 COIL,ignition assy	1
2	01517-06308 BOLT,ignition coil(M6*30)	2
3	33510H11200 CAP,spark plug	1
4	33543HG2600 BOOT,spark plug	1
5	33610-40B12 BATTERY,(STXSL-BS)(12V4A)	1
6	32900H11201 CDI,unit	1
7	31800H47A00 RELAY,starting motor	1
8	09136H06114 SCREW,ignition coil(M6*12)	1
9	32800-36C20 RECTIFIER,assy	1
10	02112-06168 SCREW,rectifier	1
11	09180-06030 SPACER,ignition coil	2

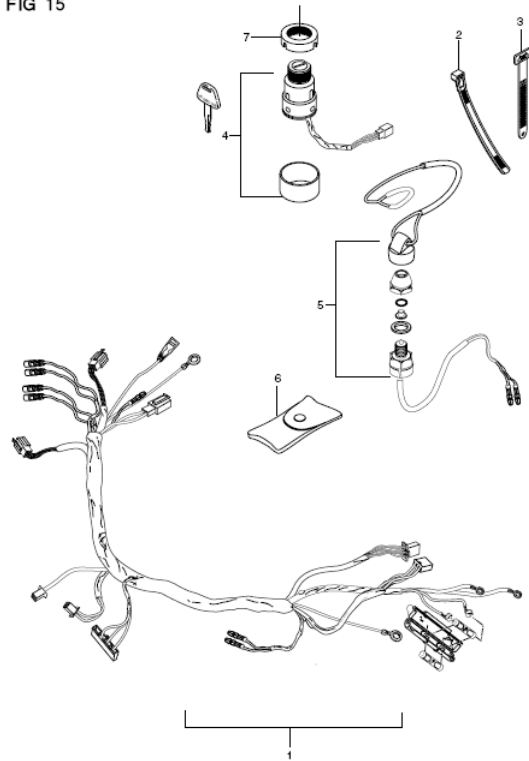
FIG 14



# FIG 15. WIRING HARNESS

REF.	PARTS NAME	(PCS)
NO. ST2		
1	36610HN3140 WIRING HARNESS	1
2	09407-14403 CLAMP,wiring harness	10
3	09407-18401 BAND,wire	1
4	37110-25319 SWITCH ASS'Y,steering	1
5	37820HK3100 SWITCH ASS'Y,emergency	1
6	37910HK3100 CASE,emergency switch	1
7	37115H05300 BRACKET, ignition switch	1

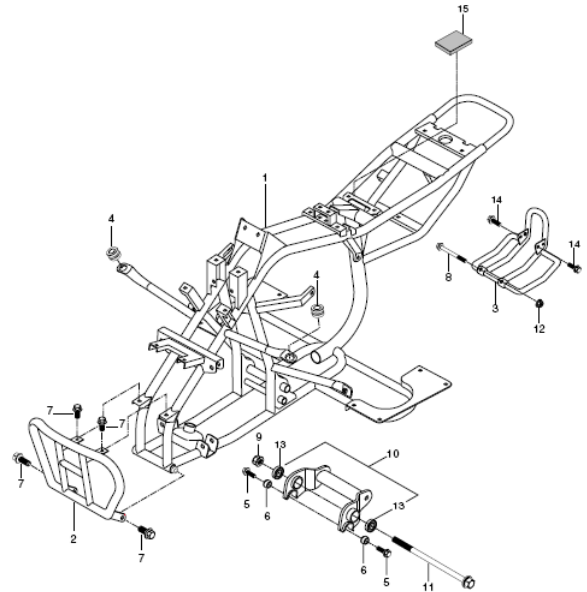
FIG 15



# FIG 16. FRAME

REF.	PARTS NAME		(PCS)
NO. ST2			
1	41100HK315203P	FRAME,comp	1
2	43990HK3103PAM	GRIP COMP, front	1
3	61390HK3103120	GUARD COMP, under	1
4	09320-11008	CUSHION,front fender	2
5	01517-10306	BOLT (M10),(L=30)	2
6	09320-10023	CUSHION,swing stop	2
7	01517-06166	BOLT,front grip(M6),(L=16)	4
8	09103H10022	BOLT,under guard front(M10),(L=110)	1
9	08319-31126	NUT,engine mounting(M12)	1
10	61110HK3100HPA	LINK COMP,engine mounting	1
11	09103H12047	BOLT,engine mounting(M12),(L=215)	1
12	08316-26108	NUT,under guard front(M10)	1
13	09319-12036	BUSH,engine mounting( $\phi$ 30.1,L=22)	2
14	01517-08166	BOLT,under guard rear(M8),(L=16)	2
15	44281-29C00	CUSHION,oil tank lower(30*30*T3)	1

FIG 16

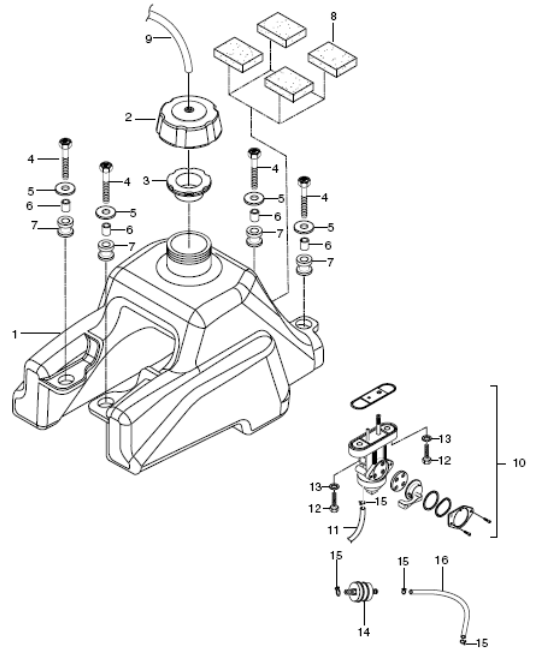




# FIG 17. FUEL TANK

REF.	PARTS NAME	(PCS)
NO. ST2		
1	44110HK3103 TANK,fuel	1
2	44211HG5801 CAP,fuel tank filler	1
3	44248-05210 GASKET,fuel tank filler cap	1
4	01107-06256 BOLT,fuel tank(M6*25)	4
5	09160-06004 WASHER,fuel tank(ø20*ø6.5*T1.2)	4
6	09180H06069 SPACER,fuel tank(ø14*ø6.5*H7.5)	4
7	09320H10038 CUSHION,fuel tank	4
8	44613HE7100 CUSHION,fuel tank lower(40*25*T10)	4
9	09343-05052 HOSE,fuel tank brth(L=580)	1
10	44300HG5802 COCK ASS'Y,fuel	1
11	44199HJ8200 HOSE,fuel No.1 & No.2(L=110)	2
12	09128-06005 BOLT,fuel cock(M6*16)	2
13	09168-06010 GASKET,fuel cock	2
14	44910HG2600 STRAINER COMP,fuel	1
15	09401-08401 CLIP,fuel hose No.1 & No.2	4

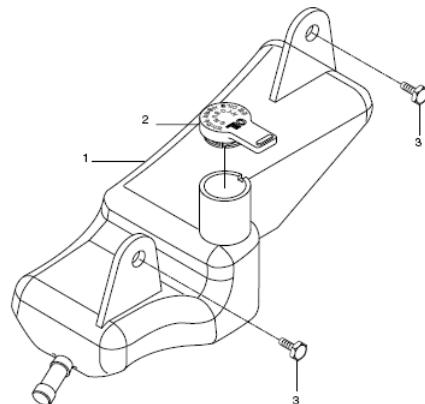
FIG 17



# FIG 18. OIL TANK

REF.	PARTS NAME	(PCS)
NO. ST2		
1	44611HK3102 TANK,oil	1
2	44651HG2600 CAP,oil tank filler	1
3	09116-06010 BOLT,oil tank(M6*16)	2
4	09160-06057 WASHER,oil tank( $\phi 18 * \phi 6.5 * T1.6$ )	

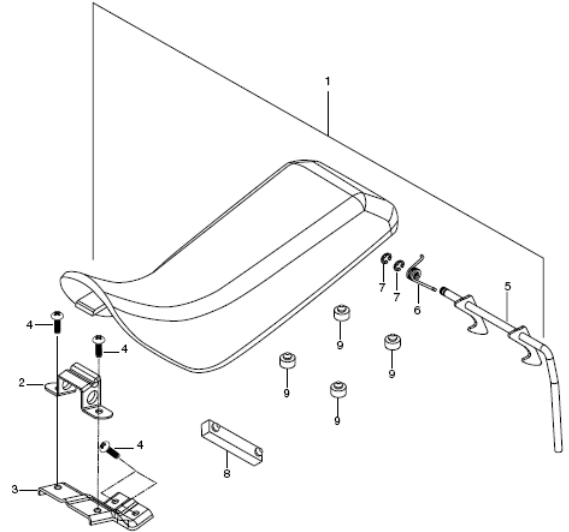
FIG 18



# FIG 19. SEAT

REF.	PARTS NAME	(PCS)
NO. ST2		
1-4	45100HK3160 SEAT,set (BLUE)	1
1-5	45100HK316058P SEAT,set (BLACK)	1
2	45119-02C00 PLATE,seat front hook	1
3	45118HK3100 PLATE,seat front hook No.1	1
4	02142-06126 SCREW,seat front hook plate(M6*12)	4
5	45210HK3100 CLAMP COMP,seat	1
6	45135-243A2 SPRING,seat clamp	1
7	08332-11066 E-RING,seat clamp	2
8	09321-080A9 CUSHION (ø60*ø20*T6.5)	1
9	09321-100B2 CUSHION (ø22*T10)	4

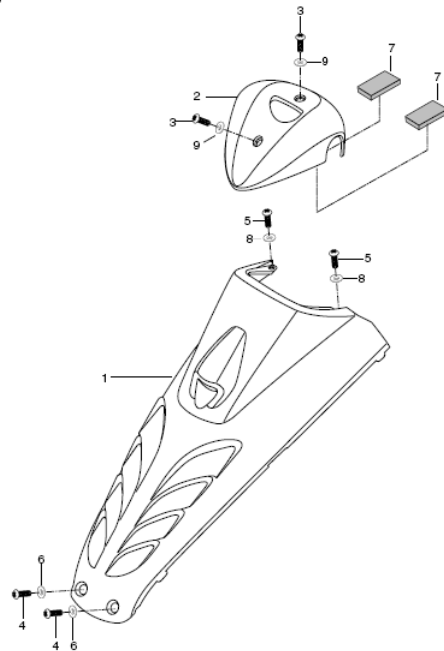
FIG 19



# FIG 20. FENDER CENTER FR

REF.	PARTS NAME		(PCS)
NO. ST2			
1	53118HK3101291	FENDER,center front (0YB)	1
	53118HK31016B1	FENDER,center front (0BY)	1
2	56171HK3100291	COVER,steering head (0YB)	1
	56171HK31006B1	COVER,steering head (0BY)	1
3	02142-05165	SCREW,steering head cover(M5*16)	2
4	02142-05226	SCREW,center front fender front(M5*22)	2
5	02142-05166	SCREW,center front fender rear(M5*16)	2
6	08322-21056	WASHER,center FF fender FF(ø5.5*ø12*T0.8)	2
7	33652-01A10	CUSHION,steering head cover(40*20*t3)	2
8	09169-05007	WASHER,center front fender rear	2
9	09169-05009	WASHER,steering head cover	2

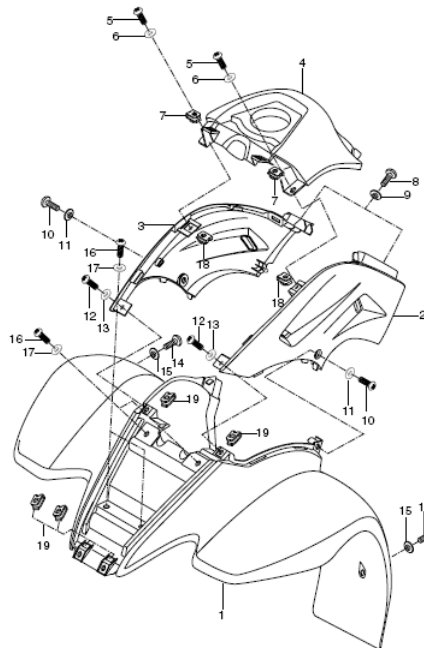
FIG 20



# FIG21. FENDER FRONT

REF.	PARTS NAME	USAGE
NO. ST2		
1	53111HK310116B FENDER,front	1
2	47211HK310016B COVER,side L	1
3	47111HK310016B COVER,side R	1
4	53119HK3101291 FENDER,center rear (0YB)	1
	53119HK31016B1 FENDER,center rear (0BY)	1
5	02142-05166 SCREW,center rear fender front(M5*16)	2
6	09169-05007 WASHER,center rear fender front	2
7	09148-05039 NUT,center rear fender front(M5)	2
8	02142-06166 SCREW,side cover rear(M6*14)	2
9	09169-06032 WASHER,side cover rear	2
10	02142-06206 SCREW,side cover lower FT(M6*20)	2
11	08322-21066 WASHER,side cover lower FT( $\phi 6.5^* \phi 13^* T2.3$ )	2
12	02142-05166 SCREW,side cover front upper(M5*16)	2
13	09169-05007 WASHER,side cover front upper	2
14	02142-06206 SCREW,front fender lower(M6*20)	2
15	09169-06032 WASHER,front fender lower	2
16	02142-06166 SCREW,front fender upper(M6*16)	4
17	09169-06032 WASHER,front fender upper	4
18	09148-05039 NUT,side cover center(M5)	2
19	09148-05039 NUT,front fender upper(M5)	4

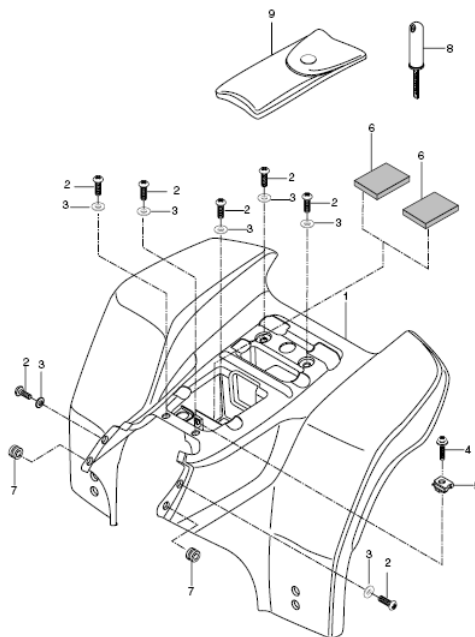
FIG 21



# FIG 22. FENDER REAR

REF.	PARTS NAME		(PCS)
NO. ST2			
1	63111HK310216B	FENDER,rear	1
2	02142-06166	SCREW,rear fender(M6*16)	7
3	09169-06032	WASHER,rear fender	7
4	09136H06114	SCREW,starting motor relay & rear fender(M6*25)	1
5	09148-06020	NUT,starting motor relay & rear fender(M6)	1
6	33652-01A10	CUSHION,rear fender & battery(ø6.5*ø18*T1.6)	2
7	09320-08028	CUSHION,rear fender front	2
8	96200HK3100	GAUGE,assy air pressure	1
9	09800HK3100	TOOL,assy	1

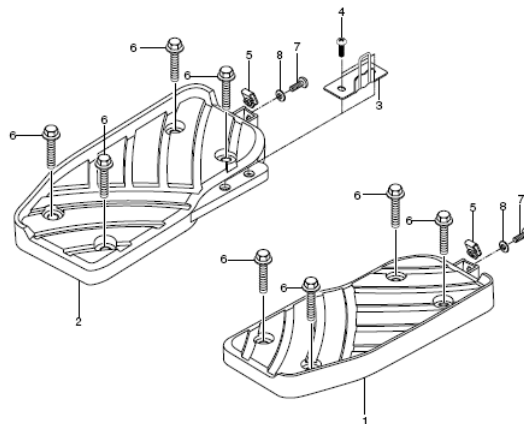
FIG 22



# FIG 23. FOOTREST

REF.	PARTS NAME		(PCS)
NO. ST2			
1	43521HK310426B	FOOTREST,front L	1
2	43511HK310426B	FOOTREST,front R	1
3	45210HF1600	GUARD,footrest RH	1
4	02142-06166	SCREW,footrest guard(M6*16)	2
5	09148-06020	NUT,footrest & RR fender(M6)	2
6	01517-06306	BOLT,front footrest(M6*30)	8
7	02142-06166	SCREW,footrest & rear fender(M6*16)	2
8	09169-06032	WASHER,footrest & RR fender	2
9	43518HK3102	BOLT,front footrest lower(M6*10)	8

FIG 23

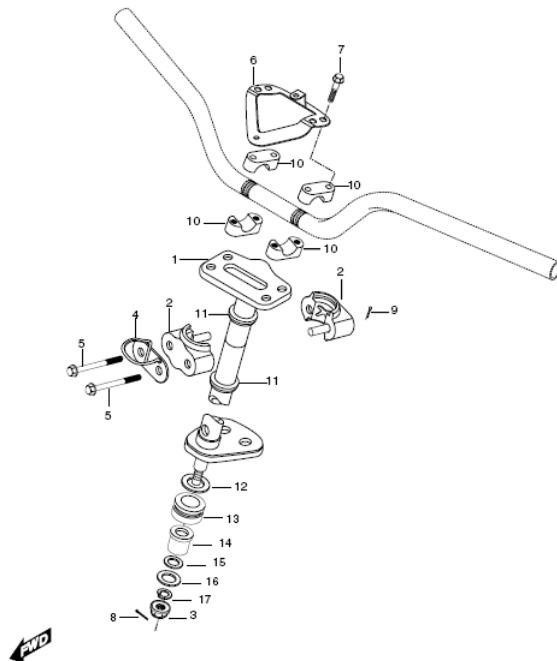


FWD

# FIG 24. SHAFT COMP STEER

REF.	PARTS NAME	(PCS)
NO. ST2		
1	51650HK3102 SHAFT,comp steering	1
2	51670-18902KOR HOLDER,steering shaft	2
3	08319-31106 NUT,steering shaft(M10)	1
4	51680HK3101 REINF,steering holder	1
5	09103-08085KOR BOLT,steering shaft(M8*60)	2
6	56172HK3100 BRACKET,steering head cover	1
7	01234-08556 BOLT,handle bar holder(M8*55)	4
8	04111-20206 COTTER PIN,steer`r shaft lower	1
9	04111-20206 COTTER PIN,steer`r shaft bolt	2
10	56211-272A0 HOLDER,handle bar	4
11	51678-18900KOR DUST SEAT,steering shaft(32*22.2*8.5)	2
12	09380H30002 SNAP RING,dust seal	1
13	51662-18900KOR DUST SEAL,steering(35*24.6*13)	1
14	51661-40B00KOR BUSH,steering shaft lower	1
15	09280-14003 O-RING,steering shaft lower(25*10.6*3.2)	1
16	09160-10068 WASHER,steering shaft low upper	1
17	08321-31106 WASHER,steering shaft low lower	1

FIG 24

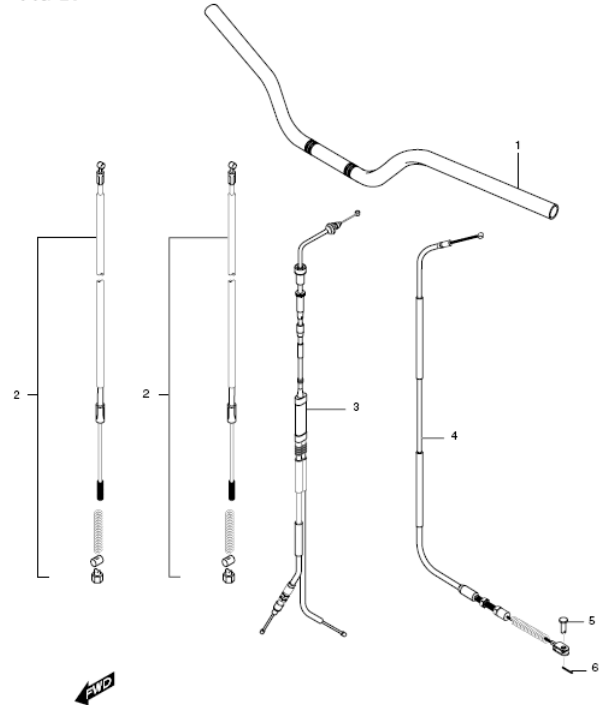




# FIG 25. HANDLE BAR

REF.	PARTS NAME	(PCS)
NO. ST2		
1	56111HK3103PAM HANDLE BAR	1
2	58110HK3102 CABLE,assy front brake	2
3	58300HK3104 CABLE,assy throttle	1
4	58510HK3103 CABLE,assy rear brake	1
5	09200-06004 PIN,rear brake cable	1
6	04111-20158 COTTER PIN, rear brake cable	1

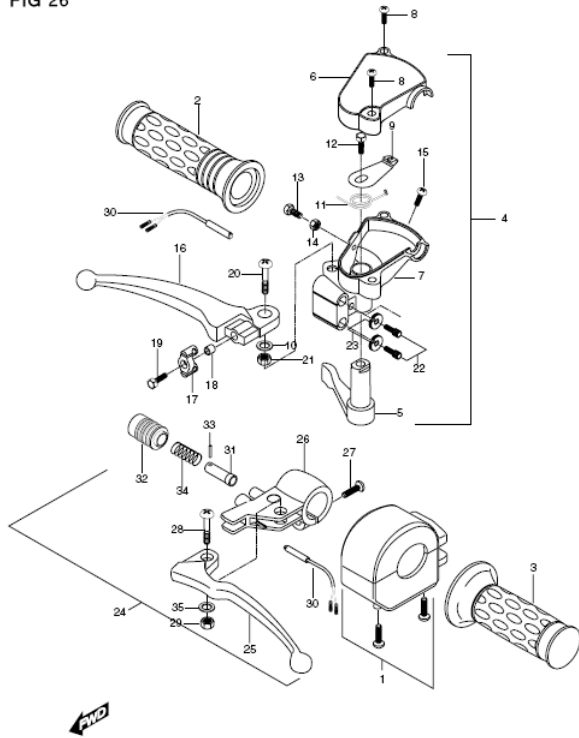
FIG 25



# FIG 26. HANDLE SWITCH

REF.	PARTS NAME	(PCS)	
NO. ST2			
1	37400HK3100	SWITCH,assy handle LH	1
2	57311HK3100	GRIP,handle RH	1
3	57211HK3101	GRIP,handle LH	1
4	57100HK3104	LEVER,assy throttle & FT brake	1
5	57151HK3101	LEVER,throttle	1
6	57131HK3100	COVER,throttle case	1
7	57121HK3100	CASE,throttle lever	1
8	02112-05165	SCREW,throttle case cover(M5*16)	2
9	57158HK3100	ARM,throttle lever	1
10	08321-51055	WASHER,front brake lever pivot	1
11	57159HK3100	SPRING,throttle lever return	1
12	09128-06072	BOLT,throttle lever	1
13	09100-05001	BOLT,throttle adjuster	1
14	08310-11055	NUT,throttle case(M5)	1
15	02112-06205	SCREW,throttle case(M6*20)	1
16	57621HK3100	LEVER,comp front brake	1
17	57396HK3101	EQUILIZER	1
18	09180H06250	BUSH	1
19	09128-06027	BOLT,equalizer	1
20	57431HK3100	BOLT,FT brake lever pivot	1
21	08310-11055	NUT,FT brake lever pivot(M6)	1
22	57441-26010	ADJUSTER,brake cable	2
23	57442-26010	NUT,brake cable adjuster	2
24	57500HK3102	LEVER,assy rear brake	1
25	57421HK3100	LEVER,comp RR brake lever	1
26	57321HK3100	HOLDER,rear brake lever	1
27	02112-06205	SCREW,holder(M6*20)	1
28	57431HK3100	BOLT,RR brake lever pivot	1
29	08310-11055	NUT,RR brake lever pivot(M6)	1
30	57460HK3100	SWITCH,assy RR brake	2
31	57781-04600	PIN,brake lever stop	1
32	57784-04600	COVER,RR brake cover stopper	1
33	57785-04600	PIN,brake cover	1
34	57783HK3100	SPRING,brake lever stopper pin	1
35	08321-21055	WASHER,rear brake lever pivot	1

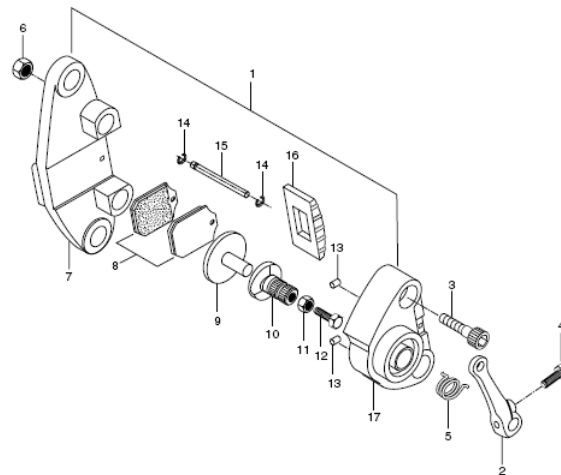
FIG 26



# FIG 27. CALIPER

REF.	PARTS NAME	(PCS)
NO. ST2		
1	69300HK3104 CALIPER,assy rear	1
2	64451HK3101 LEVER,rear brake caliper	1
3	57431H05D00 BOLT,caliper	2
4	01107-06208 BOLT,rear brake lever(M6*1.6)	1
5	09448H15001 SPRING,rear caliper lever return	1
6	08310-11055 NUT,caliper pad push adjuster(M5)	1
7	59311-21000 HOUSING, RH caliper	1
8	59300-21000 PAD,brake	1
9	59322-21000 PLATE,pad push	1
10	59321-21000 CAM,brake	1
11	08310-11055 NUT,adjust(M5)	1
12	01107-05305 BOLT,adjust(M5*30)	1
13	09261-06930 ROLLER	1
14	09383-25041 E-RING	1
15	09209-21000 PIN,pad guide	1
16	59340-21000 CAP	1
17	59312-21000 HOUSING LH,caliper	1

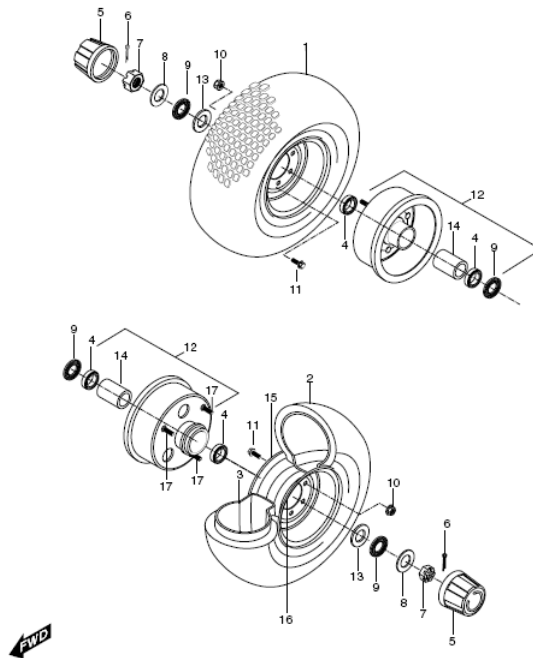
FIG 27



# FIG 28. FRONT WHEEL

REF.	PARTS NAME	(PCS)
NO. ST2		
1	55102-04605 TIRE,set front	
2	55100-04605 TIRE,comp front(145/70-6)	2
3	55200-04605 TUBE, ASS'Y	2
4	08120-60027KOR BEARING,front hub(15*32*9)	4
5	54725HK3101 CAP,wheel center	2
6	04111-30258 COTTER PIN,axle front	2
7	08314-40146 NUT,front axle(M14)	2
8	08322-11148 WASHER,front wheel	2
9	54841-04200 SEAL, FT hub brg(32*20*3)	4
10	08316-16086 NUT,front wheel(M8)	12
11	09106-08114 BOLT,front wheel(M8*16)	6
12	54110HK3104HPA HUB,comp front wheel	2
13	54741-04200KOR SPACER,front axle	2
14	54741-04200KOR SPACER,front hub bearing	2
15	65312HK3100999 RIM,wheel front inner(4.50D*6,silver)	2
16	65313HK3100999 RIM,wheel front outer(4.50D*6,silver)	2
17	09119-08050KOR BOLT,hub(M8*17)	6

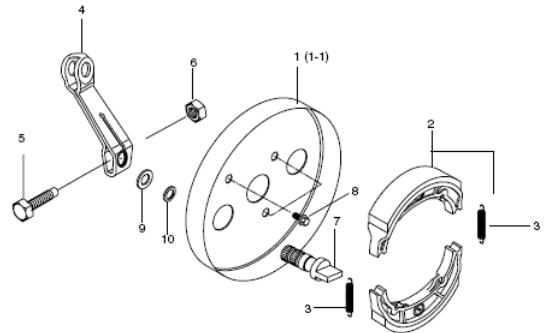
FIG 28



# FIG 29. FRONT BRAKE

REF.	PARTS NAME	(PCS)
NO. ST2		
1	54511HK3106 PLATE,front brake RH	1
1-1	54611HK3106 PLATE,front brake LH	1
2	64400HK3100 SHOE,comp front brake	4
3	09443H08025 SPRING,front brake shoe(L=32)	4
4	54451HK3102 LEVER,front brake cam	2
5	12812-30A00 BOLT,rear brake cam lever(M6*31)	2
6	08316-16068 NUT,rear brake cam lever(M6)	2
7	54441HK3103 CAM,front brake	2
8	09100-06158 BOLT,front brake plate(M6*8)	6
9	09160-12011 WASHER,front brake cam( $\phi 20 * \phi 12.5 * T1.0$ )	2
10	09280H14005 O-RING,front brake cam(ID:11.4*D: $\phi 11.4$ )	2

FIG 29

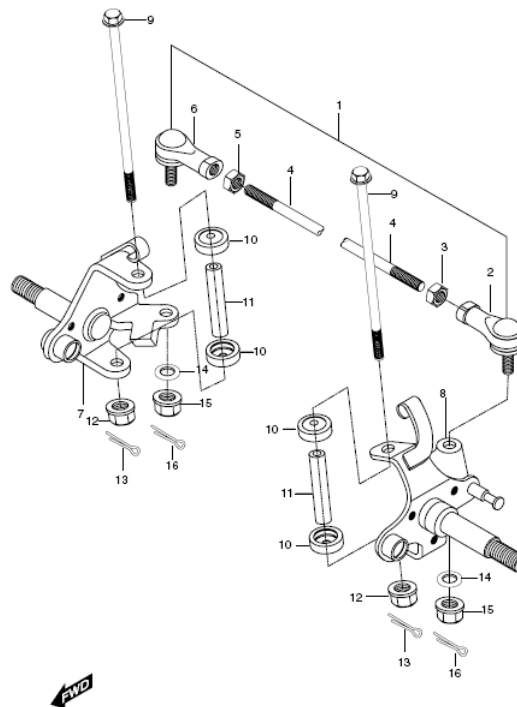


**FWD**

# FIG 30. TIE ROD SET

REF.	PARTS NAME	(PCS)
NO. ST2		
1	51091HK3102 TIE ROD,set steering	2
2	51270HK3100 END,comp rod L	2
3	09140-10027 NUT,tie rod inner(M10)	2
4	51281HK3101 TIE ROD,steering(M10*162)	2
5	09140-10043 NUT,tie rod outer(M10)	2
6	51260HK3100 END,comp rod R	2
7	51230HK3110 KNUCKLE,comp steering R	1
8	51240HK3110 KNUCKLE,comp steering L	1
9	09103-10082KOR BOLT,knuckle arm(M10*110)	2
10	51255-18900KOR SEAL,knuckle arm dust	4
11	51251HK3100 SPACER,king pin	2
12	08319-31106 NUT,knuckle arm(M10)	2
13	04111-20206 COTTER PIN,knuckle arm bolt(L=20)	2
14	08321-31106 WASHER,rod end ( $\phi 18.8*\phi 10.2*T3.0$ )	2
15	08319-31106 NUT,rod end(M10)	2
16	04111-20206 COTTER PIN,rod end(L=20)	2

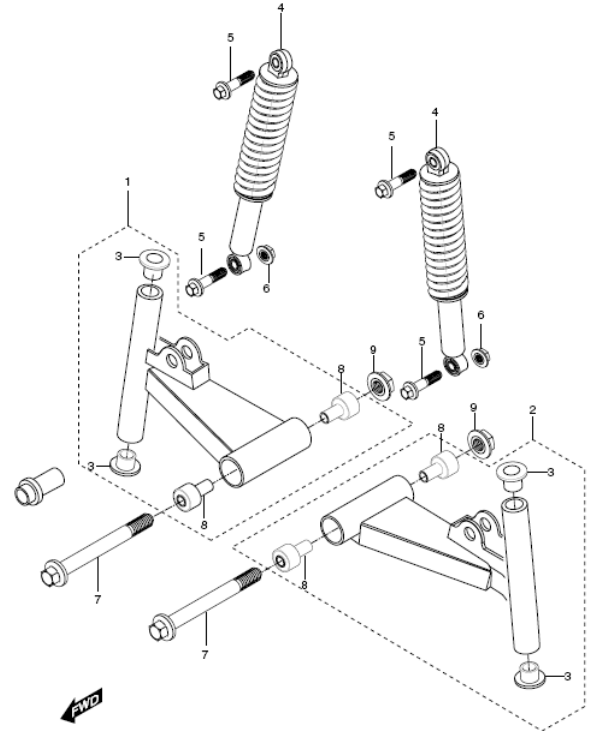
FIG 30



# FIG 31. SUSPENSION ARM

REF.	PARTS NAME		(PCS)
NO. ST2			
1	52410HK3103PAM	ARM,comp suspension R	1
2	52420HK3103PAM	ARM,comp suspension L	1
3	51236-40B00KOR	BUSH,king pin	4
4	52100HK3100	ABSORBER,assy front shock	2
5	61181-02C00	BOLT,front shock absorber assy(M10*40)	4
6	08316-26106	NUT,front shock absorber assy(M10)	2
7	09103H12026	BOLT,suspension arm(M12*124)	2
8	09319H12005	BUSH,suspension arm	4
9	08319-31126	NUT,suspension arm(M12)	2

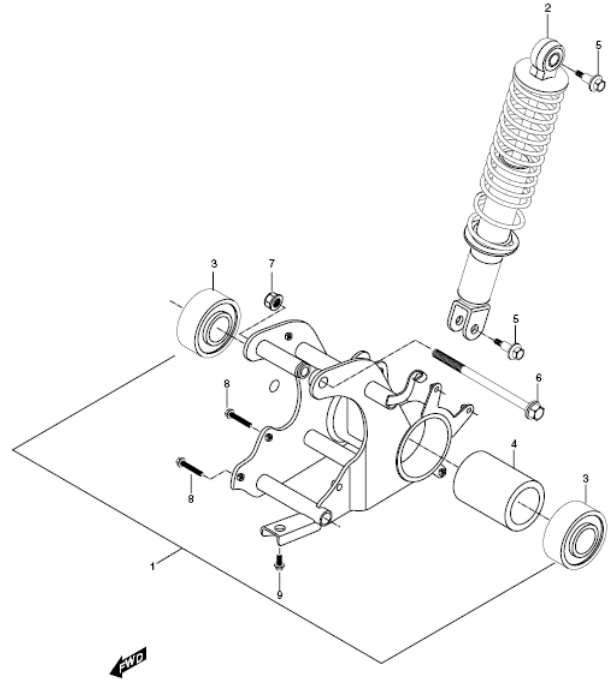
FIG 31



# FIG 32. REAR HOUSING COMP

REF.	PARTS NAME		(PCS)
NO. ST2			
1	64720HK3109PAM	HOUSING,comp RR axle brg	1
2	62100HK3104	ABSORBER,assy rear shock ~ KM4AA12A541104010	2
2~1	62100HK3105	ABSORBER,assy rear shock KM4AA12A541104011 ~	2
3	09262H32001	BEARING,rear axle(32*65*17)	2
4	64731HK3102	SPACER,rear axle bearing(L=65)	1
5	61181-02C00	BOLT,rear shock absorber(M10*40)	2
6	09103H10022	BOLT,rear axle housing & case(L=110,M10*110)	1
7	08319-31108	NUT,rear axle housing & case(M10)	1
8	07110-08256	BOLT,rear axle housing clamp bracket & case R(L=65)	2
9	01517-08126	BOLT,RR axle hsg bracket & case(M8*26)	1
9~1	01517-08168	BOLT,RR axle hsg bracket & case(M8*26)	1

FIG 32

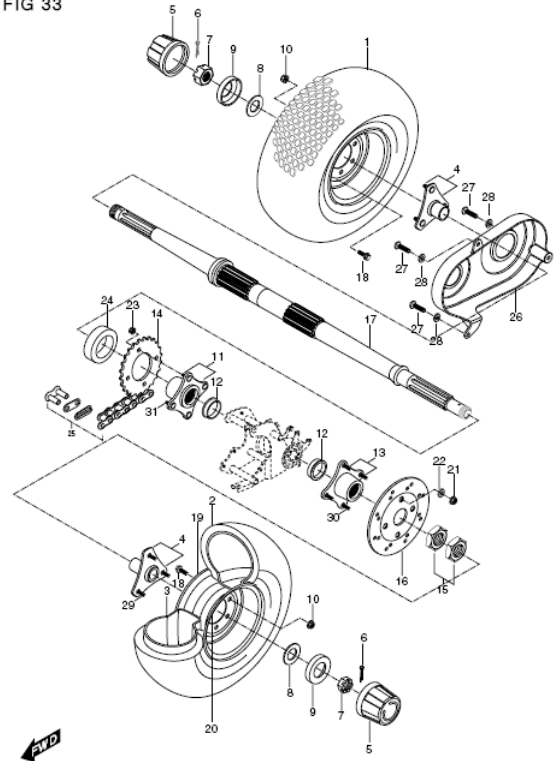




# FIG 33. REAR WHEEL

REF.	PARTS NAME		(PCS)
NO. ST2			
4	64110HK3101HPA	HUB,comp rear	2
5	54725HK3101	CAP,wheel center	2
6	04111-40308	COTTER PIN,rear hub	2
7	09141H16000	NUT,rear hub(M16)	2
8	64723-02400	WASHER,rear axle( $\phi 16.5 \times \phi 30 \times T1.8$ )	2
9	64726-04200	HOLDER,center cap	2
10	08316-16086	NUT,wheet set(M8)	12
11	64610HK3101HPA	FLANGE,comp sprocket mounting	1
12	09285H42001	DUST SEAL,rear axle bearing( $42 \times 65 \times T7$ )	2
13	69220HK3101HPA	FLANGE,comp rear disk	1
14	64511HK3101	SPROCKET,rear(28T)	1
15	09140-28003	NUT,rear axle(M28)	2
16	69211HK3100	DISK,rear	1
17	64711HK3102	AXLE,rear	1
18	01517-08126	BOLT,wheet set(M8*12)	6
19	65312HK3100999	RIM,wheel rear inner	2
20	65313HK3100999	RIM,wheel rear outer	2
21	08319-31088	NUT,rear disk(M8)	4
22	09160-08030	WASHER,rear disk( $\phi 8.5 \times \phi 22 \times T3.2$ )	4
23	08319-31088	NUT,rear sprocket(M8)	4
24	09180H35001	SPACER,rear axle R( $34 \times 41 \times T6$ )	1
25	27600HK3102	CHAIN,comp drive	1
26	61310HK3103	CASE,chain	1
27	02142-06165	SCREW,chain case(M6*16)	3
28	09169-06032	WASHER,chain case	3
29	09119-08050KOR	BOLT,hub(M8*17)	6
30	09119-08073KOR	BOLT,rear disk flange	4
31	09119-08073KOR	BOLT,rear sprocket flange	4

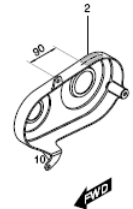
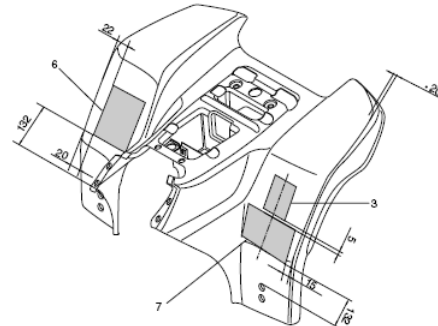
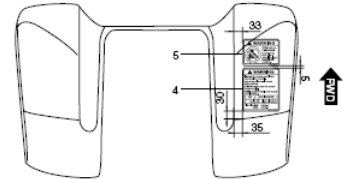
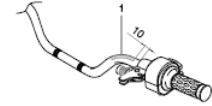
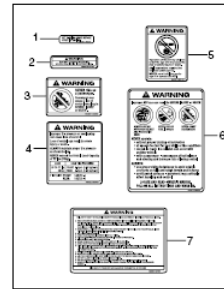
FIG 33



# FIG 34. LABEL

REF.	PARTS NAME	(PCS)	
1	68343HK3100	WARNING,parking brake	1
2	68320HK3100	LABEL,chain case	1
3	68931HK3100	LABEL, AGE(6/12)	1
4	68332HK3100	LABEL,tire air pressure	1
5	68367HK3100	LABEL,no passenger	1
6	68921HK3100	LABEL,general warning	1
7	68366HK3100	LABEL,warning	1

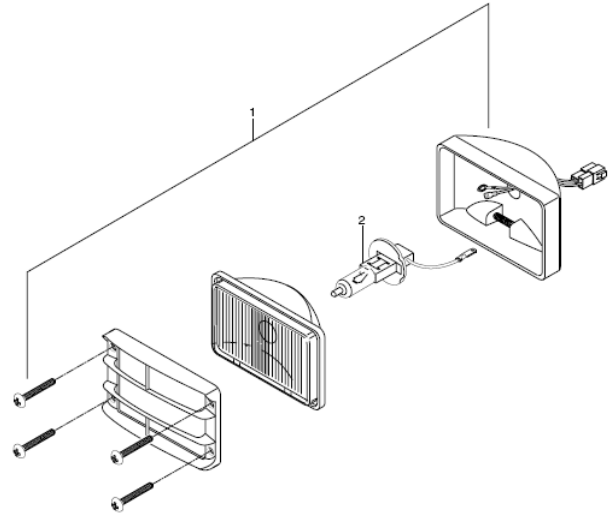
FIG 34



# FIG 35. HEAD LAMP

REF.	PARTS NAME	(PCS)
1	HEAD LAMP ASS'Y	1
2	BULB, head lamp(12V,35W)	1

FIG.35



# FIG 36. REAR COMBINATION

REF.	PARTS NAME	
NO. ST2		(PCS)
1	LAMP ASS'Y, tail	1
2	BULB, tail lamp (12V,5W)	1

FIG.36

