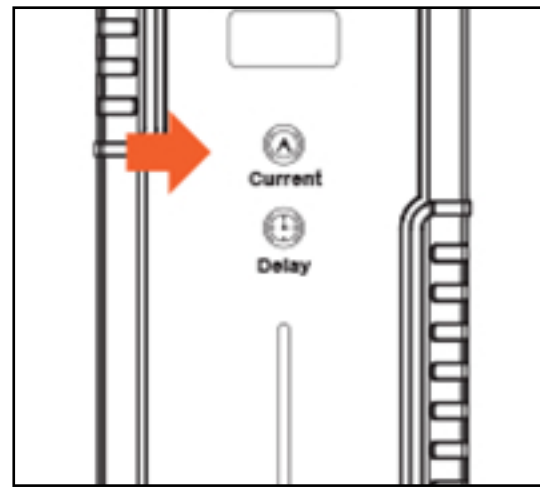


### STEP 1

Choose the Right Power Plug & Insert the Power Plug into a wall socket  
 TIPS: Level 1: 120V,5-20 Plug & Level 2: 240V,14-50 Plug



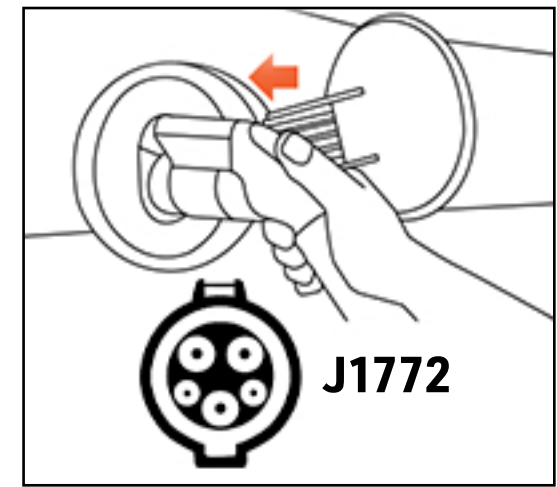
### STEP 2

Press the Button to Set the Current and Charging Time  
 Level 1- Max.16A  
 Level 2-Max.32 A

SOLUTION OF GROUNDING FAULT ISSUES	
Current	Long Press 3 secs to ENTER Grounding
Delay	Long Press 3 secs to EXIT Grounding

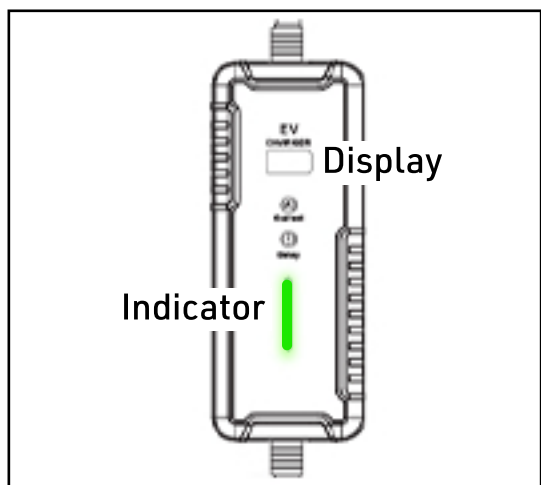
### STEP 3

- Ensure that the car is parked and the engine is turned OFF
- Ensure the EV charger isn't damaged before use



### STEP 4

Insert the charging Plug into the EV Socket  
 For Tesla: Need a J1772 to Tesla Adaptor ( Not Included)



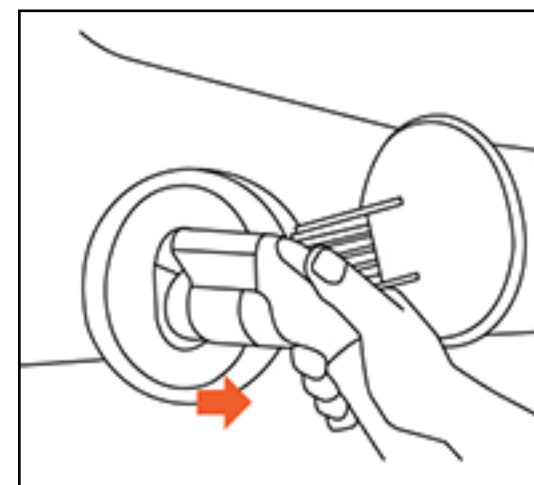
### STEP 5

Charging Starts with Indicator Light Blink & Check the display to make sure EV charging is on

Condition	Color	Flash State
Power On (unplugged)	Green	Stays On
Insert the Plug		Flashing
Charging Completed	Blue	Flashing
Charging Mode		Stays On
Communication Error	Red	1 Flash
Under - Voltage Protection		2 Flashes
Grounding Fault		3 Flashes
Over - Voltage Protection		4 Flashes
Over - Current Protection		5 Flashes
Leakage Protection		6 Flashes
Over - Heating Protection		7 Flashes
		8 Flashes

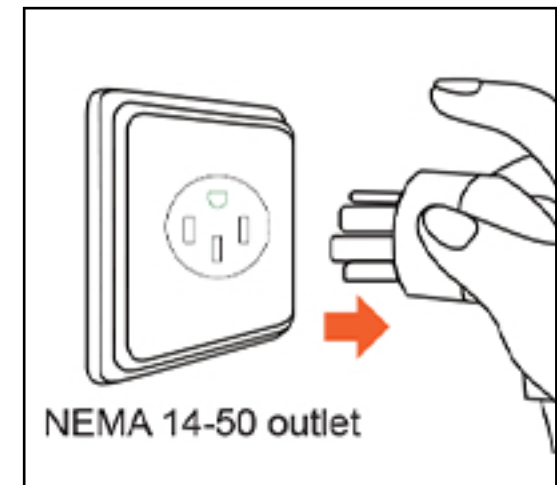
### STEP 6

Monitor the indicator light to Check the Charging Status



### STEP 7

Remove plug from the socket when charging finishes.



### STEP 8

Unplug the power plug from the wall socket.