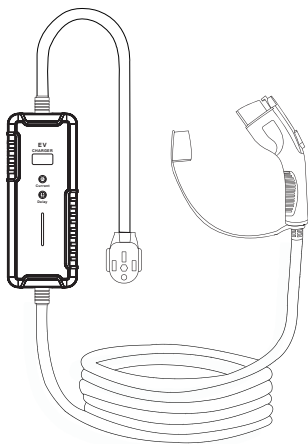


# voltre

## LIGHTNING M2 Electric Vehicle Charger

### USER MANUAL MODEL: M2-32A-ADJ (Level 2, 32A, Adjustable)



Please read this manual carefully before use



# 1. INTRODUCTION

Thank you for purchasing the Voltre™ M2 LIGHTNING Electric Vehicle Charger for use with your electric vehicle. This User Manual shows how to use the charger. It provides easy to-use instructions for using the charger with your all-electric vehicle. Website: [voltretech.com](http://voltretech.com)

## **Please Note**

This user's manual includes the latest information available at the time of printing. Voltre reserves the right to make changes to this manual or product without further notice. Changes, modifications, or repairs to this product by parties other than an authorized service provider could void the product warranty.

## **FCC Information**

This device complies with Part 15 of the FCC Rules. Operation is subject to the following two conditions:

1. This device may not cause harmful interference.
2. This device must accept any interference received, including interference that may cause undesired operation.

This product has been designed to protect against radio frequency interference. However, some high-powered radio signals or nearby equipment, such as digital phones or RF communications equipment, could affect operation.

If you suspect your Charger is receiving interference, take the following steps before contacting Customer Support:

1. Relocate nearby electrical appliances or equipment during charging.
2. Turn off nearby electrical appliances or equipment during charging.

**NOTE:** Changes or modifications to this product by anyone other than an authorized service provider will void FCC compliance.

## **UL Certified**




UL Recognized - Cable: (UL) E498724

## 2. IMPORTANT SAFETY INSTRUCTIONS

Read these instructions, and the charging instructions in your vehicle owner's manual, before charging your electric vehicle. Failure to do so may result in serious injury or death.

### Symbol Usage

Take special note of all information marked with the following symbols:

 	<p>"Non - recyclable" mark: located on the product, instruction manual or package, indicating that electrical and electronic equipment and its accessories should be treated separately from ordinary household waste.</p> <p>When scrapped, it should be treated as industrial waste, otherwise it may cause accidents.</p>
	<p>Warning sign: indicates danger. Pay attention to the personal injury that may be caused by operation procedure or incorrect operation. Actions after the "warning" mark can only be performed when the conditions indicated by the condition are fully understood and satisfied.</p>

### Additional Safety Information

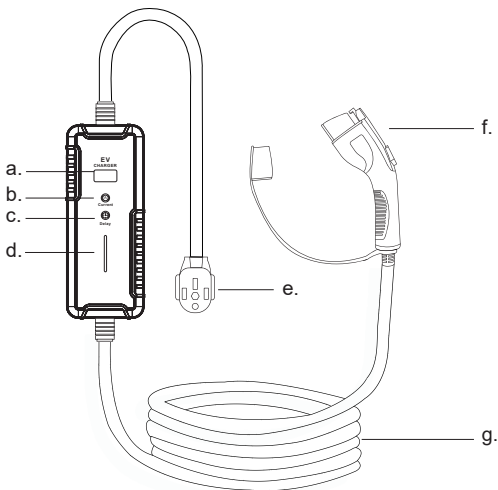
- When the charger connector is properly connected to the vehicle receptacle, the vehicle propulsion system is disabled. The output cable has a safety break-away feature in case the vehicle is moved or unintentionally rolls away from the parking location with the cable connected to the vehicle. The safety break-away feature will allow output cable separation from the Charging if the output cable is yanked or pulled with excessive force.
- The output cable should be coiled up on the hanger when not in use to minimize damage to the cable and eliminate the possibility of tripping.

### 3. ABOUT YOUR DEVICE

The Voltre™ M2 Electric Vehicle Charger supplies 100 - 240V AC power to your electric vehicle. It is designed to control and monitor energy delivery from the residence's electrical service wiring to your electric vehicle. The Charger monitors current and battery state of charge to ensure the quickest, safest transfer of power to recharge the vehicle's propulsion battery.

You can safely and conveniently connect the charger to your vehicle's charge receptacle for battery recharging. When the EV charger connector is connected to the vehicle receptacle, a communication link is established between the vehicle and the charger. The charge cycle initiation is automatic and is subject to the demand of the vehicle.

**Please configure your charger SETUP after plugging in to wall outlet, before charging vehicle, if facing GROUNDING troubleshooting issues.**



- a. LED Display
- b. CURRENT Button
- c. DELAY Button
- d. Indicator Light
- e. Wall Outlet Power Plug
- f. Charge Coupler
- g. Power Cable

## 4. DISPLAY COMPONENTS



- 1. Temperature Control Box
- 2. Charging Voltage
- 3. Charging Current Limit
- 4. Signal Voltage
- 5. Charging Current
- 6. Charging Power
- 7. Charging Time/Delay
- 8. Charged Energy

## 5. SETTINGS - DISPLAY SETUP

To configure Settings: Plug in to wall outlet, and adjust Settings before connecting to charging vehicle.

Adjust Current  
**13A**

Press the CURRENT button to adjust current: 8A/10A/13A/16A/32A.

Time Reservation  
**00:00:00**

Press the DELAY button to add charging time. (1 hour / press, max: 8 hours)

Yes Grounding

Long press the CURRENT button for 3 seconds to enter the grounding mode.

No Grounding

Long press the DELAY button for 3 seconds to exit the grounding mode.

**NOTE: If facing GROUNDING troubleshooting issues, try toggling between Yes/No Grounding Mode settings.**

## 6. CHARGING YOUR VEHICLE

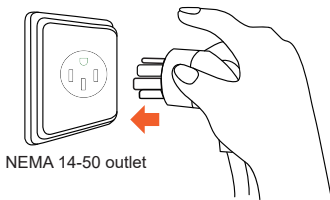
### NOTE:

Ensure that the car is parked and the engine is turned OFF.

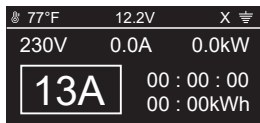
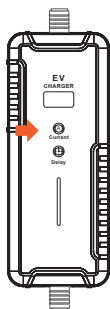
Ensure the EV charger is not damaged before use.

Ensure to finish Setting configuration (Step 5) before connecting the Charge coupler to your vehicle.

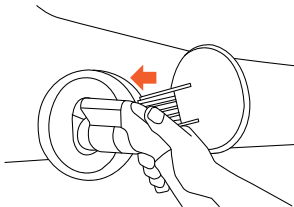
1. Insert the charging plug into an appropriate wall outlet. If your home voltage is Level 1 (120V), please connect and use the 5-20 adapter. If your home supports 240V, you can use Level 2 charging with 14-50 plug/outlet connection.



2. With the adjustable current function, you can adjust the charging current using the current switch button - you can see the selected charging current on the LCD display. Level 1 (120V AC) can only support a maximum current setting of up to 16A. Level 2 (240V AC) supports up to 32A.



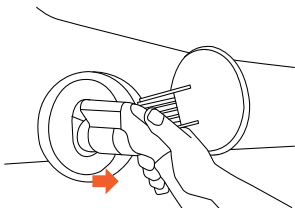
3. Plug the Charge Coupler into your vehicle's charging outlet until it clicks. Once latched, the Charge Coupler will not disengage until the release button has been pressed manually.



4. Charging begins automatically. Power will be delivered in accordance to the demand of the vehicle. During charging, the Charging Indicator light on the LED display will blink continuously. You can also verify the vehicle charging status by checking your vehicle's charging panel "dashboard gauge". Refer to the vehicle owner's manual to find the location of the gauge on your dashboard.

5. When the vehicle is fully charged, the Charging Indicator light will stay solid. Your vehicle's "dashboard gauge" can be used to verify that the vehicle is fully charged.

6. Disconnect the Charger when the charge is completed by pressing the release button on the Charge Coupler and removing it from the vehicle.



## 7. TROUBLESHOOTING - INDICATOR LIGHTS

**MANY PROBLEMS CAN BE RESOLVED USING THE TROUBLE-SHOOTING SECTION. IF YOU BELIEVE THAT YOUR CHARGER NEEDS FURTHER SERVICE OR REPAIR AFTER ATTEMPTING TROUBLESHOOTING, PLEASE CONTACT CUSTOMER SERVICE AT [volttech.com/support](http://volttech.com/support) DO NOT ATTEMPT TO REPAIR OR SERVICE THE CHARGER YOURSELF. THERE ARE NO USER SERVICEABLE PARTS INSIDE.**

Working Condition	Light State		
	Red	Green	Blue
Power On (Unplugged)	/	Stays On	/
Insert The Plug (Unplugged)	/	Flashing	/
Charging Mode	/	/	Flashing



Working Condition	Light State		
	Red	Green	Blue
Charging Completed	/	/	Stays On
Communication Error	1 Flash	/	/
Under - Voltage Protection	2 Flashes	/	/
Over - Voltage Protection	3 Flashes	/	/
Grounding Fault	4 Flashes	/	/
Over - Current Protection	5 Flashes	/	/
Leakage Protection	7 Flashes	/	/
Over - Heating Protection	8 Flashes	/	/

**For troubleshooting issues, please refer to the following guideline.**

**Please contact [voltretech.com/support](https://voltretech.com/support) and provide indicator issue.**

When the red light flickers:

1. One time 0.5s on, 0.5s off: CP voltage abnormal.
2. Two times 0.5s on, 0.5s off: Input under voltage or abnormal grid frequency.
3. Three times 0.5s on, 0.5s off: Input over voltage or abnormal grid frequency.
4. Four times 0.5s on, 0.5s off: Charging box not grounded or poorly grounded.
5. Five times 0.5s on, 0.5s off: Over current fault during charging.
6. Seven times 0.5s on, 0.5s off: Current leakage problem during charging.
7. Eight times 0.5s on, 0.5s off: Over heating protection.

## 8. CAUTIONS



### **ELECTRIC SHOCK CAN KILL.**

Touching live electrical parts can cause fatal shocks or severe burns.

The input power circuitry and internal circuits are live whenever input power is on.

Do not step on the cable, do not pull it, do not fold it up and do not knot it.

Do not drop the control unit or put heavy items on it.

Do not place the charging cable near high-temperature objects.

Do not use the device in extreme temperatures, normal operating range (-22°F to +122°F).

Make sure that the charging plug, the cable and the control box are free from any signs of Scratches, rust, cracks, etc.

Do not charge if the power outlet is damaged, rusted, cracked or loosely connected.

Make sure the power plug and outlet are compatible before use.

## 9. PRODUCT SPECIFICATION

Voltage : 100-240V AC

Maximum Current : 16A (for 120V AC) / 32A (for 240V AC)

Rated Power : 1.7 (120V) - 7Kw ( 240V)

Frequency : 50Hz/60Hz

IP Degree : IP65

Operating Temp : -30°C to +50°C (-22°F to +122°F)

Operating Humidity : 5% to 95% HR

Plug : NEMA 14-50 Plug, Adapter: 5-20 Plug

EV connector : SAE-J1772

Cable Length : 25ft (7.62M)

Control Box Size : L210 × W85 × H50 (mm)

## 10. PACKAGE LIST

Portable Electric Vehicle Chager x 1

Instruction Manual x 1

Portable Storage Bag x 1

14-50 to 5-20 Adapter x 1

## 11. WARRANTY

Contact us by email: [Hello@voltretech.com](mailto:Hello@voltretech.com)

Register and Submit your product warranty details:

 [voltretech.com/support](https://voltretech.com/support)

Website: [voltretech.com](https://voltretech.com)



**WARRANTY  
REGISTRATION**



**PRODUCT  
SUPPORT**



**CONTACT  
US**