

# Fabric Options



# Nokia Natural

A soft linen-textured fabric in a beautiful light cream colour.

- 46% viscose, 20% linen, 18% polyester, 16% cotton
- Exceeds 100,000 double rubs
- Cleaning code SW
- Featured on our [Santana Bed](#)

Order swatches [here](#).



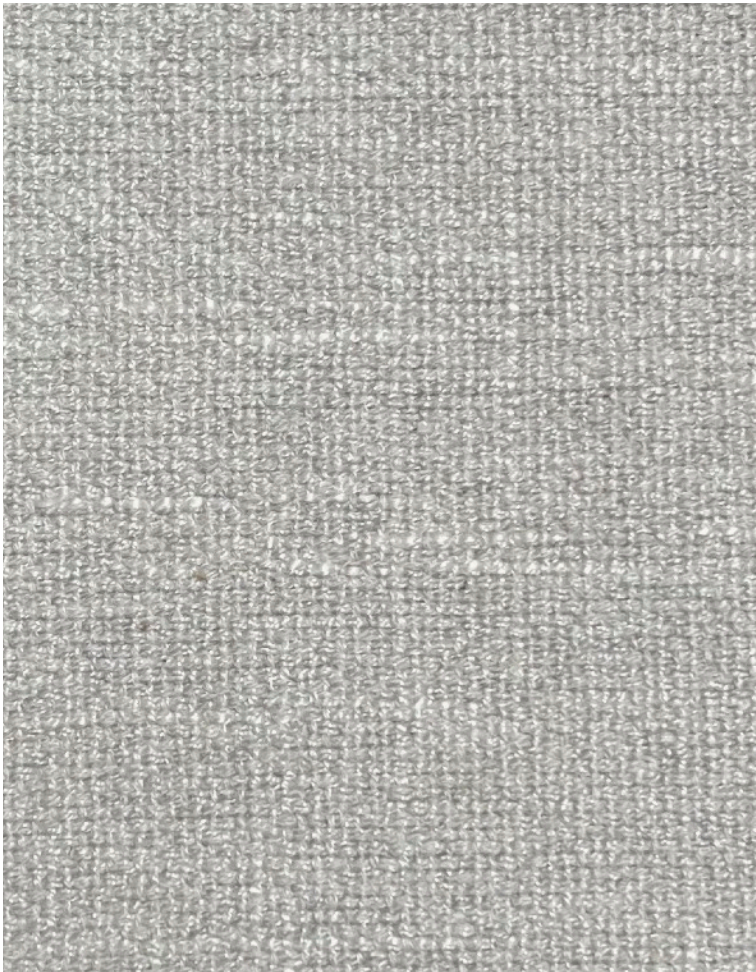
# Nokia Cream

A soft linen-textured fabric in a beautiful light cream colour.

- 46% viscose, 20% linen, 18% polyester, 16% cotton
- Exceeds 100,000 double rubs
- Cleaning code SW
- Featured on our [Clarissa Bed](#)

Order swatches [here](#).



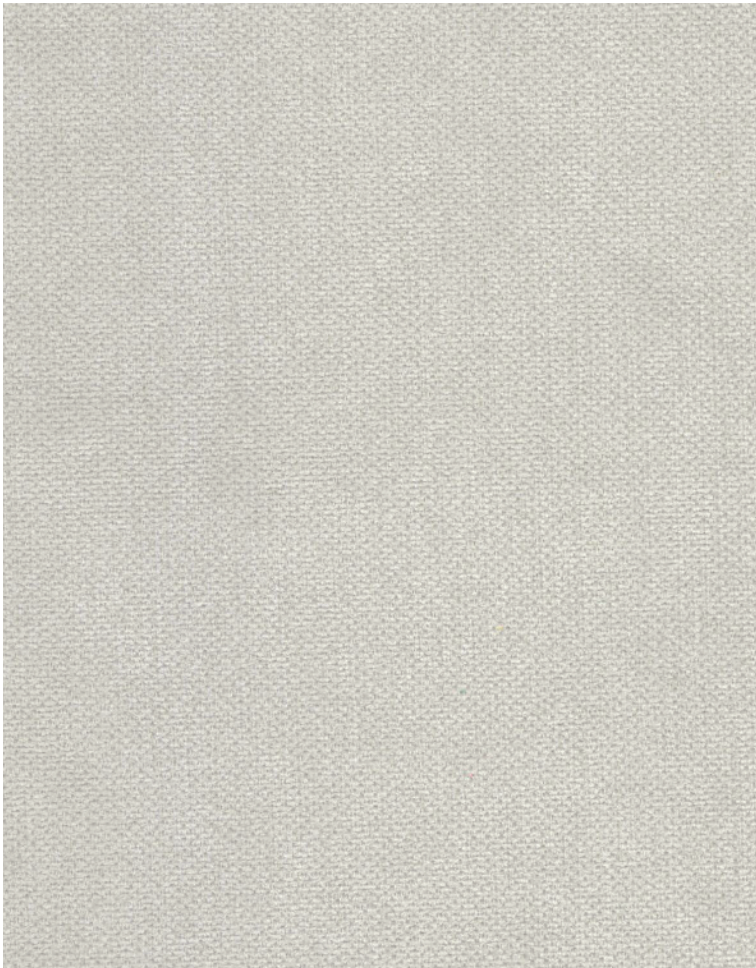


# Nokia Light Grey

A soft linen-textured fabric in a light grey colour.

- 46% viscose, 20% linen, 18% polyester, 16% cotton
- Exceeds 100,000 double rubs
- Cleaning code SW
- Featured on our [Stacey Sectional](#)

Order swatches [here](#).



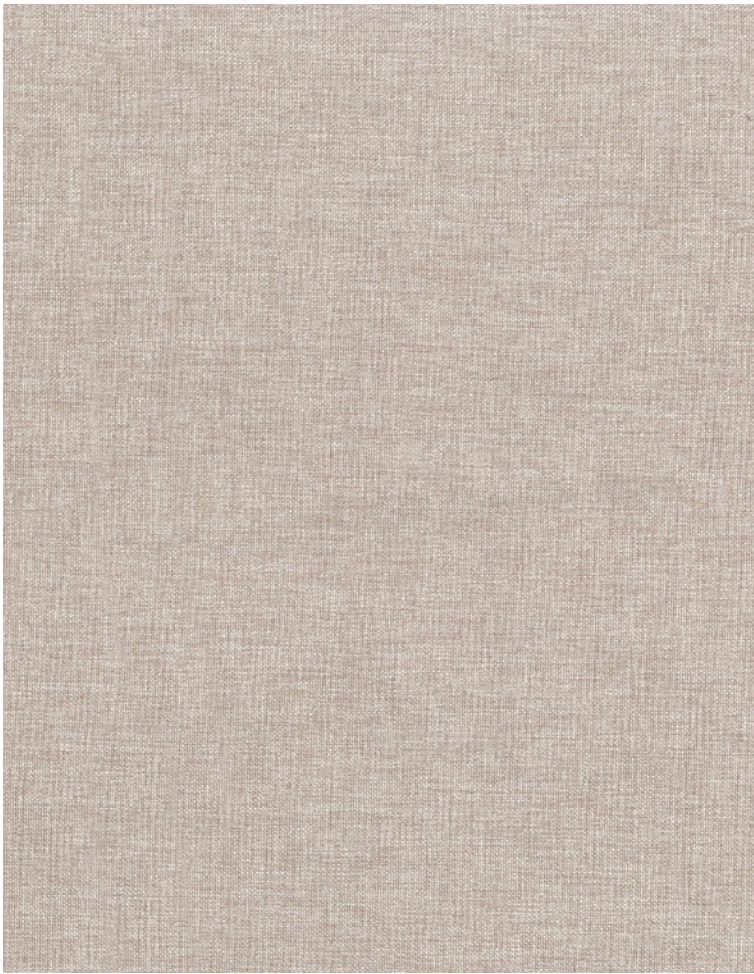
# Kingston Ivory

A soft and versatile fabric with a uniform texture in a light ivory colour.

- 100% polyester
- Exceeds 100,000 double rubs
- Cleaning code W
- Featured on our [Santa Fe Bed](#)

Order swatches [here](#).



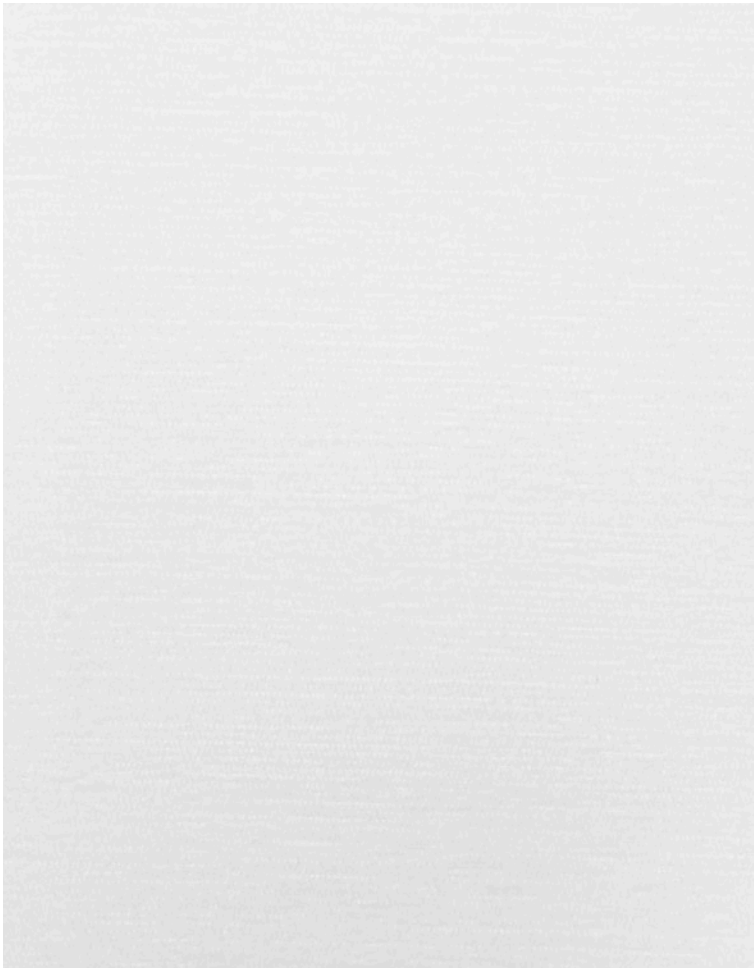


# Natural

A soft wool-like fabric with a fine weave in a rich grey colour.

- 100% polyester
- Exceeds 100,000 double rubs
- Cleaning code SW
- Featured on our [Santana Bed](#)

Order swatches [here](#).



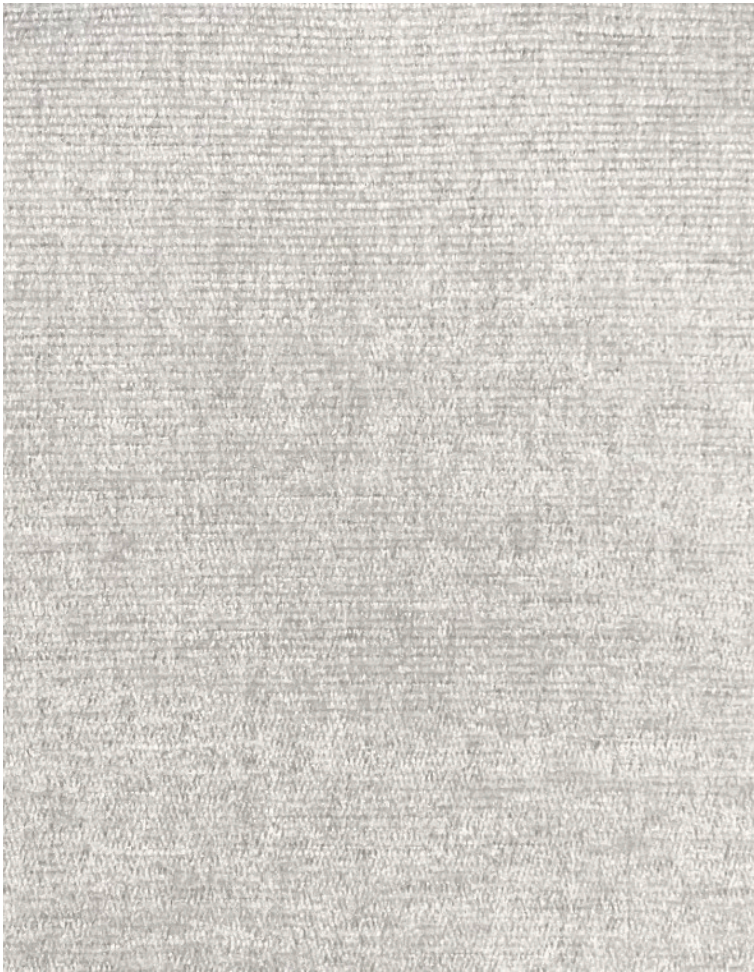
# Gable Snow

A soft and durable chenille fabric in an off-white colour.

- Stain and soil resistant
- 100% polyester
- Exceeds 100,000 double rubs
- Cleaning code W

Order swatches [here](#).





# Gable Silver Lining

A soft and durable chenille fabric in a warm grey colour.

- Stain and soil resistant
- 100% polyester
- Exceeds 100,000 double rubs
- Cleaning code W

Order swatches [here](#).



# Gable Outer Space

A soft and durable chenille fabric in a rich dark blue colour.

- Stain and soil resistant
- 100% polyester
- Exceeds 100,000 double rubs
- Cleaning code W

Order swatches [here](#).



# Contessa Vanilla

A soft and durable chenille fabric in a rich creamy colour.

- 100% polyester
- Exceeds 100,000 double rubs
- Cleaning code W

Order swatches [here](#).



# Contessa Oyster

A soft and durable chenille fabric in an elegant light grey colour.

- 100% polyester
- Exceeds 100,000 double rubs
- Cleaning code W

Order swatches [here](#).



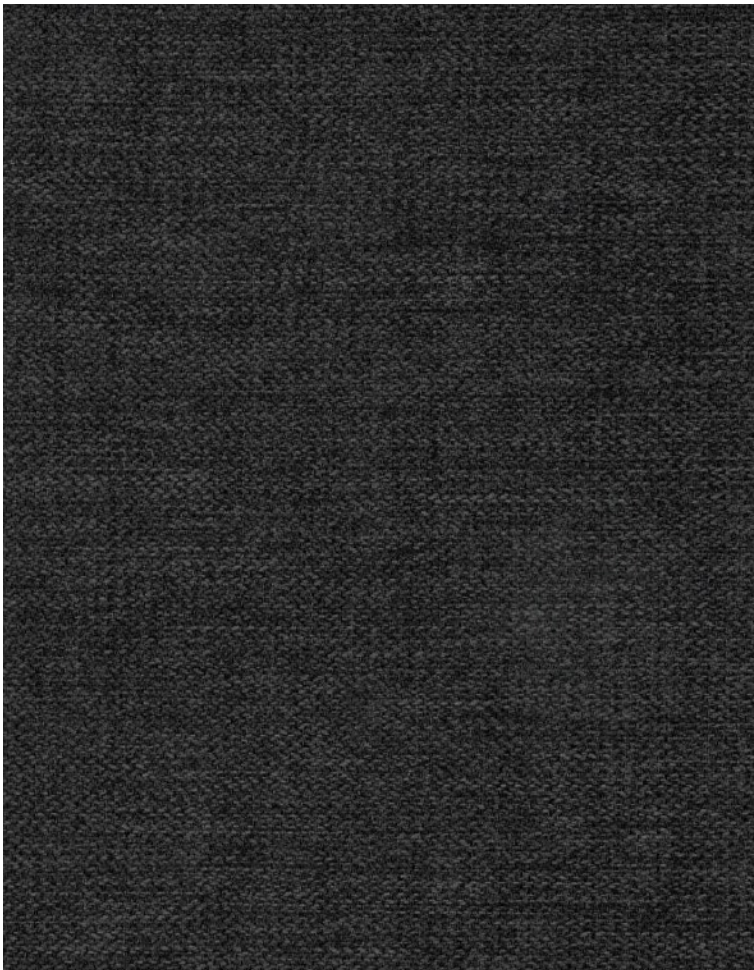


# Contessa Paprika

A soft and durable chenille fabric burnt red colour

- 100% polyester
- Exceeds 100,000 double rubs
- Cleaning code W

Order swatches [here](#).



# Luna Charcoal

A soft textured fabric in a dark grey colour.

- 100% polyester
- Exceeds 100,000 double rubs
- Cleaning code W

Order swatches [here](#).





# Muse Quartz

A soft woven fabric with a thick weave in a medium light cream colour.

- Stain and soil resistant
- 100% polyester
- Exceeds 50,000 double rubs
- Cleaning code W

Order swatches [here](#).



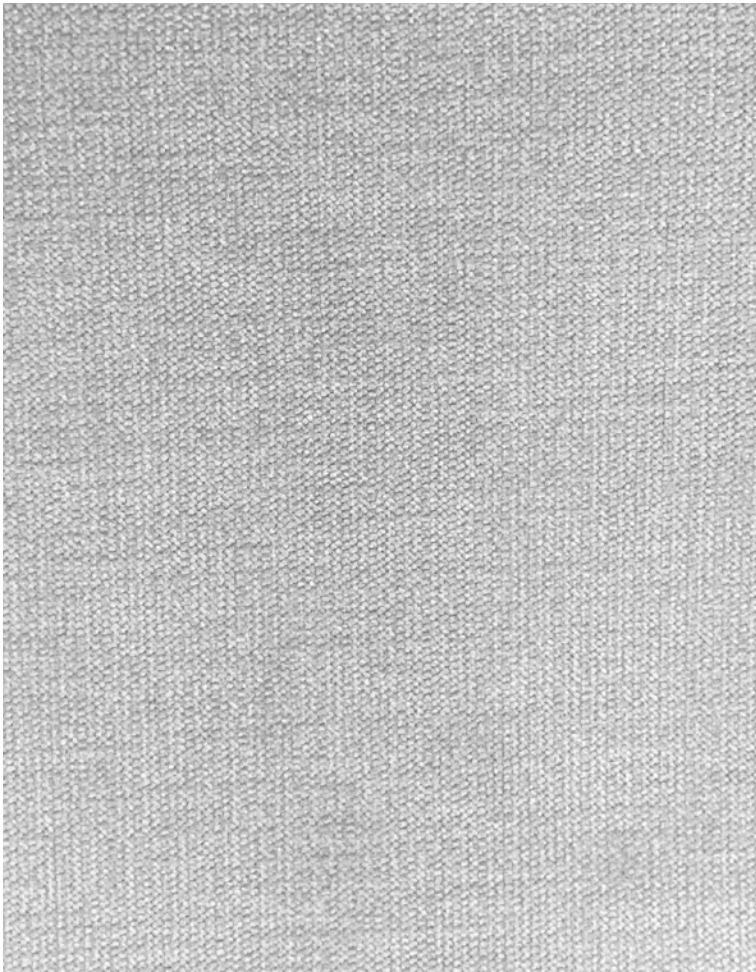
# Romance Cream

A soft and durable chenille fabric in a luxurious cream colour.

- Stain and soil resistant
- 100% polyester
- Exceeds 100,000 double rubs
- Cleaning code WS

Order swatches [here](#).





# Carson Light Grey

A soft and durable chenille fabric in a light grey colour.

- 80% polyester, 20% nylon
- Exceeds 100,000 double rubs
- Cleaning code S
- Featured on our [Stanton Series](#)

Order swatches [here](#).



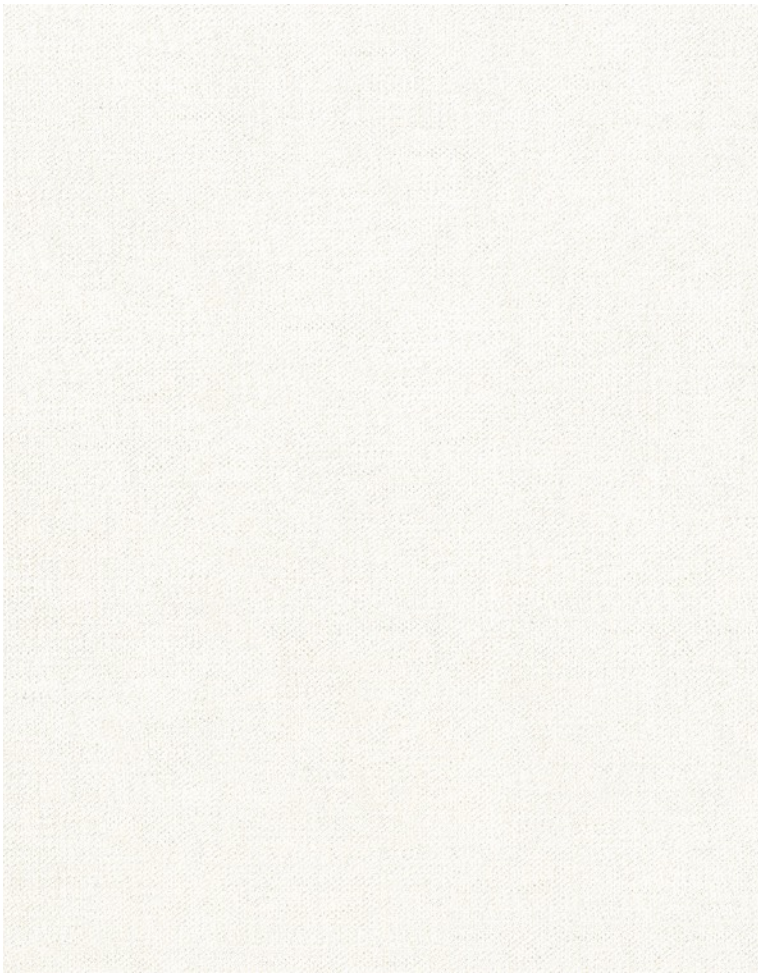
# Carson Cream

A soft and durable chenille fabric in a light cream colour.

- 80% polyester, 20% nylon
- Exceeds 100,000 double rubs
- Cleaning code S

Order swatches [here](#).





# Yates Pearl

A soft linen-wool textured and versatile fabric in a near-white colour.

- 100% polyester
- Exceeds 200,000 double rubs
- Cleaning code W

Order swatches [here](#).



# Yates Taupe

A soft linen-wool textured and versatile fabric in a taupe colour.

- 100% polyester
- Exceeds 200,000 double rubs
- Cleaning code W

Order swatches [here](#).





# Cartier Artichoke

A luxurious chenille fabric in a unique green colour and rich finish.

- 100% polyester
- Spill and soil resistant
- Exceeds 200,000 double rubs
- Cleaning code W

Order swatches [here](#).



# Cartier Ballerina

A luxurious chenille fabric in a unique pink colour and rich finish.

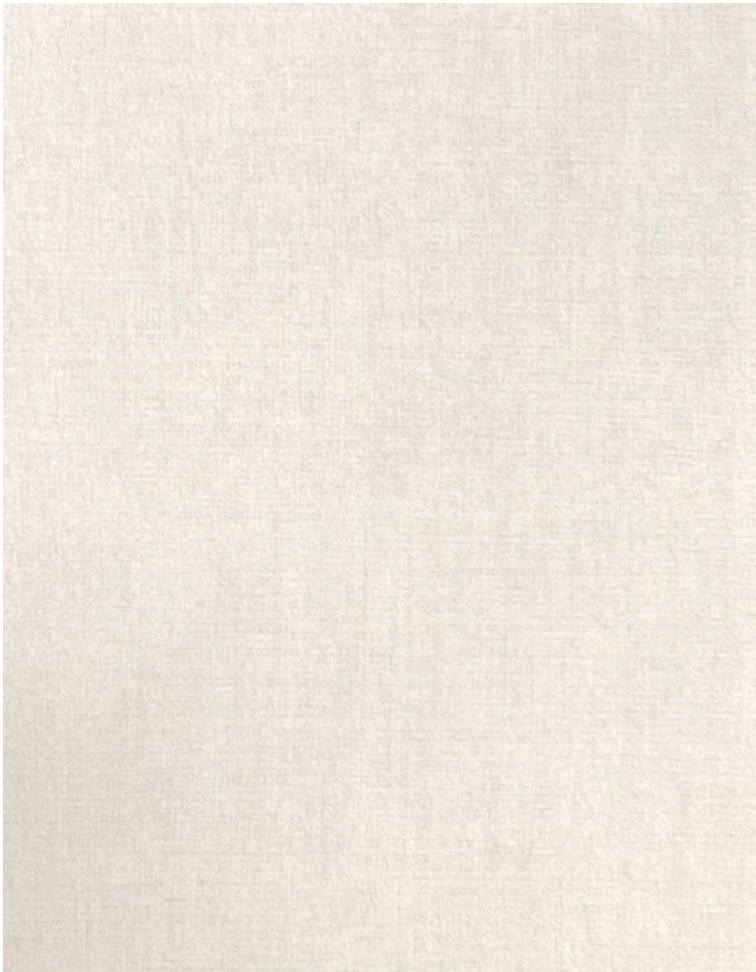
- 100% polyester
- Spill and soil resistant
- Exceeds 200,000 double rubs
- Cleaning code W

Order swatches [here](#).



# **Velvet Options**





# Empress Cream

A durable, plush and soft cream velvet.

- Stain and soil resistant
- 100% polyester
- Exceeds 200,000 double rubs
- Cleaning code SW

Order swatches [here](#).



# Empress Asphalt

A durable, plush and soft dark grey velvet.

- Stain and soil resistant
- 100% polyester
- Exceeds 200,000 double rubs
- Cleaning code SW

Order swatches [here](#).





# Frank Black

A durable, plush and soft solid black velvet.

- 100% polyester
- Exceeds 235,000 double rubs
- Cleaning code W
- Featured on our [Tuxedo Sofa](#)

Order swatches [here](#).



# Frank Sage

A durable, plush and soft green velvet.

- Stain and soil resistant
- 100% polyester
- Exceeds 235,000 double rubs
- Cleaning code W

Order swatches [here](#).



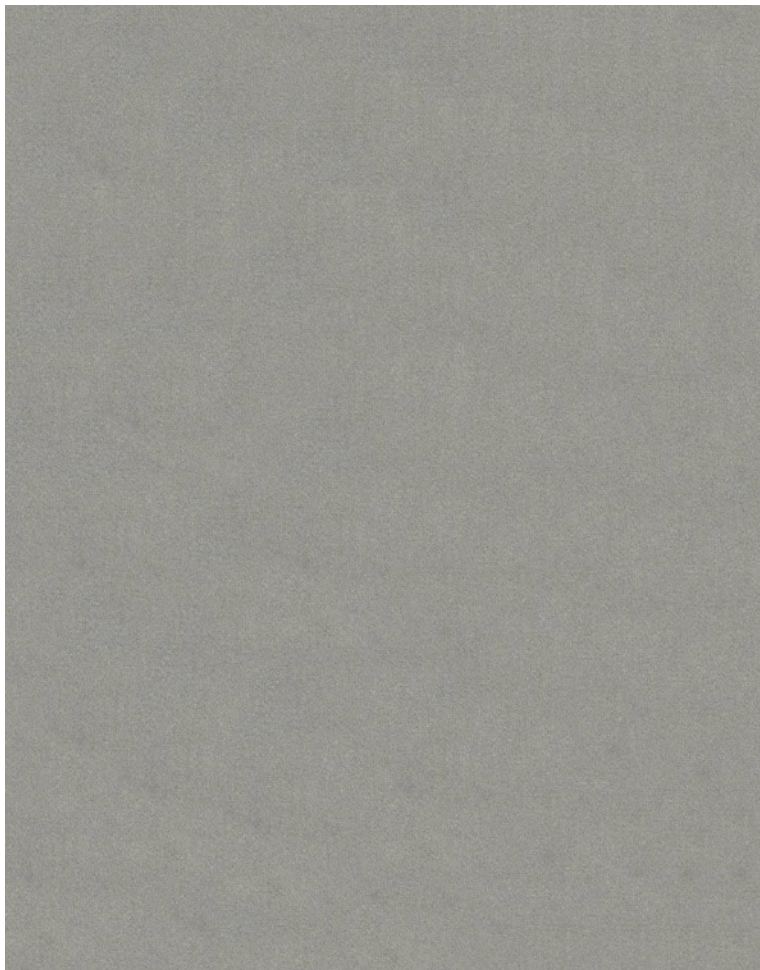


# Frank White

A durable, plush and soft solid white velvet.

- Stain and soil resistant
- 100% polyester
- Exceeds 235,000 double rubs
- Cleaning code W

Order swatches [here](#).



# Frank Platinum

A durable, plush and soft grey velvet.

- Stain and soil resistant
- 100% polyester
- Exceeds 235,000 double rubs
- Cleaning code W
- Featured on our [Alto Bed](#)

Order swatches [here](#).

# Bouclé Options





# Felicity Ivory

A durable, plush and high-pile bouclé in a solid ivory/cream colour.

- Stain and soil resistant
- 100% polyester
- Exceeds 160,000 double rubs
- Cleaning code W
- Featured on our [Kirsten Bed](#)

Order swatches [here](#).



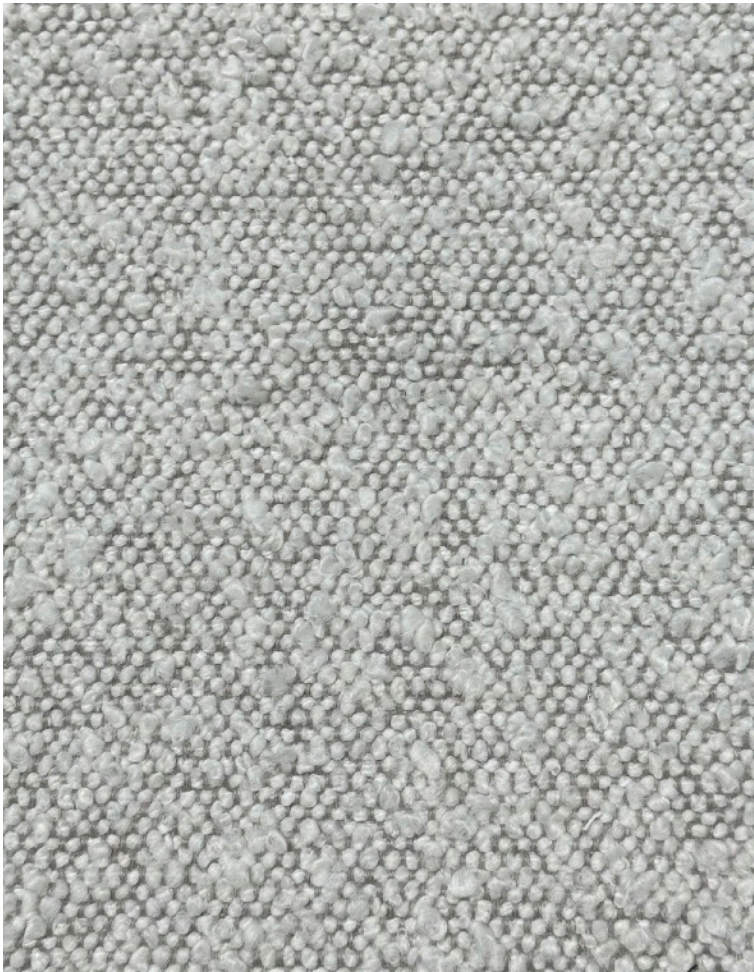
# Felicity Onyx

A durable, plush and high-pile bouclé in a solid near-black colour.

- Stain and soil resistant
- 100% polyester
- Exceeds 160,000 double rubs
- Cleaning code W

Order swatches [here](#).





# Oris Snow

A durable, plush and high-pile bouclé in a solid off-white pile and contrasting thread.

- Stain and soil resistant
- 100% polyester
- Exceeds 160,000 double rubs
- Cleaning code W

Order swatches [here](#).



# Oris Basil

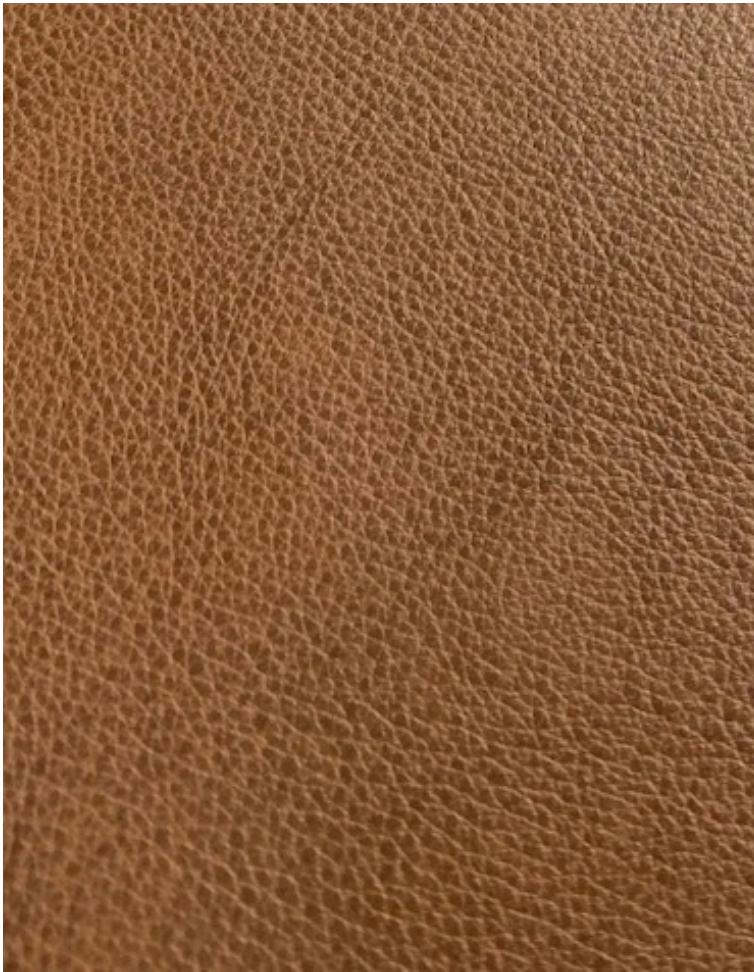
A durable, plush and high-pile bouclé in a unique green pile and contrasting thread.

- Stain and soil resistant
- 100% polyester
- Exceeds 160,000 double rubs
- Cleaning code W

Order swatches [here](#).



# **Leatherette Options**



# Toledo Cognac

A high performance, pebbled faux-leather in a beautiful brown colour.

- Stain and soil resistant
- 100% polyurethane - PVC free
- Exceeds 250,000 double rubs
- Cleaning code W

Order swatches [here](#).



# Premier Black

A high performance, pebbled faux-leather in a solid black colour.

- Stain and soil resistant
- 100% polyurethane - PVC free
- Exceeds 500,000 double rubs
- Cleaning code W

Order swatches [here](#).





# Premier Grey

A high performance, pebbled faux-leather in a light grey colour.

- Stain and soil resistant
- 100% polyurethane - PVC free
- Exceeds 500,000 double rubs
- Cleaning code W

Order swatches [here](#).



# Premier Cream

A high performance, pebbled faux-leather in a light cream colour.

- Stain and soil resistant
- 100% polyurethane - PVC free
- Exceeds 500,000 double rubs
- Cleaning code W

Order swatches [here](#).