



Instructions for use Contour Bath

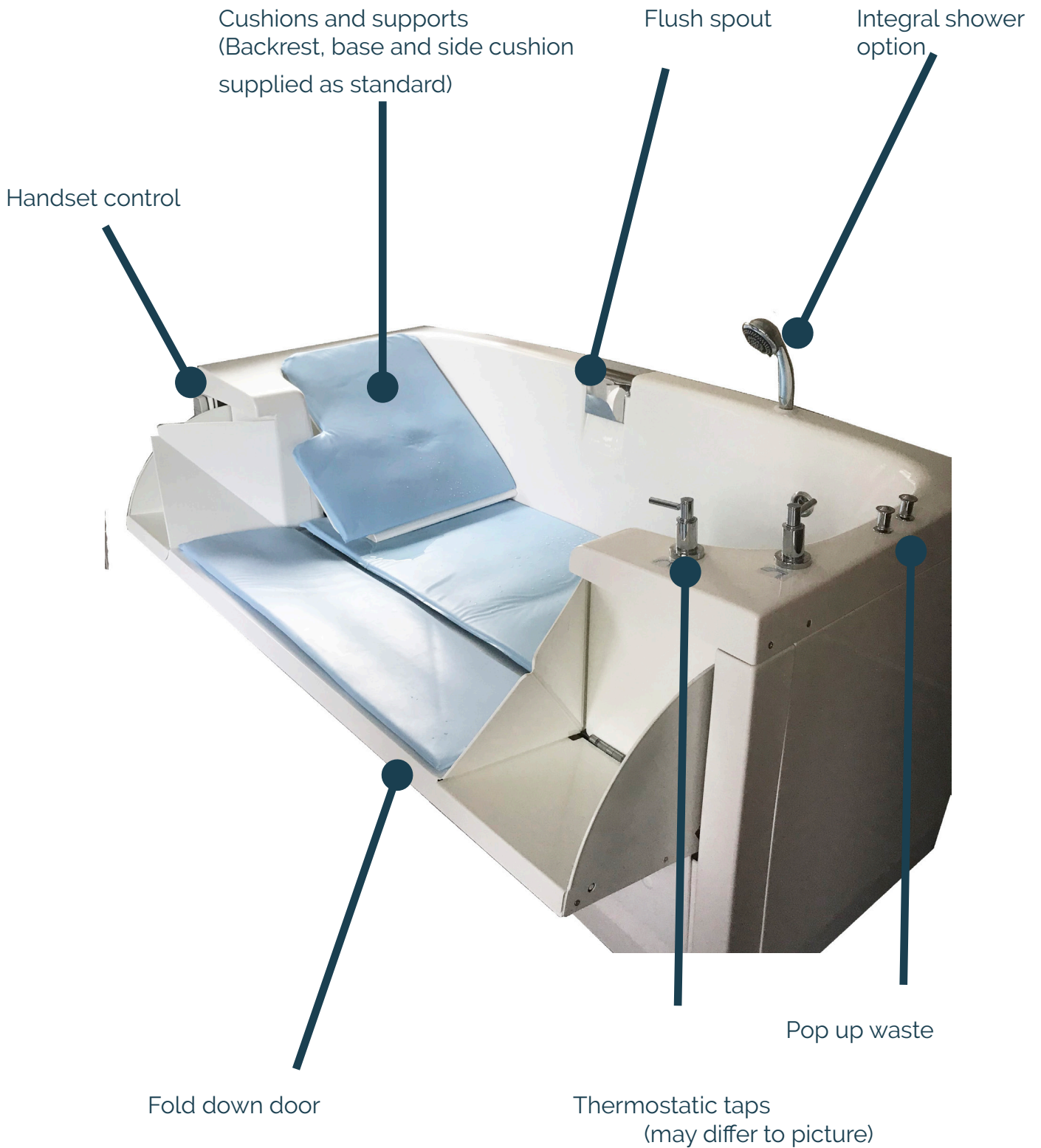


PLEASE READ THESE INSTRUCTIONS BEFORE USE

CONTENTS

GENERAL DESCRIPTION
IMPORTANT SAFETY INSTRUCTIONS
OPERATING INSTRUCTIONS
ACCESSORIES
INSTALLATION
MAINTENANCE
CLEANING
STICKERS AND MARKINGS
GUARANTEE

General Description



The Contour bath is a height adjustable bath that is to be used in establishments such as Care Homes, Hospitals and private homes.

The bath is designed primarily as an assisted bathing bath incorporating a fold-down side for easy access and variable height function to assist carers and transfer from wheelchairs.

The fold side also allows the Contour to be used as a general changing table and showering platform.

Important Safety Information



No person who is incapable of helping themselves must be left unattended in the bath at any one time

- Do not stand on or in the product at any time
- Provisions must be made to be able to remove the user from the bath safely in case of emergency or power failure. This must be feasible when the bath is in any of its raised positions. (i.e. a mobile hoist in case the ceiling track hoist fails.)
- Kingkraft products are intended for domestic and commercial use only
- Do not exceed the maximum weight load specified (133kg/21st)
- Only one person should be in the bath at one time
- Only Kingkraft manufactured accessories have been tested by Kingkraft for safe use with this bath under normal conditions of use
- The bath is fitted with a handset, this should not be submerged in the water, if this happens to fall in, quickly wipe it dry and seek further advice if unsure
- Your Contour Bath should have been fitted at a safe distance from the wall to avoid trapping, however always ensure that all limbs, head, fingers and toes are not on the outside of the bath when it's in motion
- Always check the temperature of the water before placing a person in the bath, this should be ideally done with a calibrated thermometer
- Be aware when using bubble baths or foaming products, these can excessively froth, never leave anyone unattended as there is a risk of drowning
- Never place anything or anyone underneath the bath - doing so could cause damage to persons or the electronic mechanisms on the bath
- The drop down side is load bearing and will take the specified weight load, however there is always a risk of tipping, if you are unsure about the safety of the bath, contact Kingkraft

We would recommend sticking these safety instructions on the wall located near the bath so that carers/other users are able to see them clearly. If you would like a laminated copy, please let us know.



RISK OF SCALDING

Although safety devices are fitted to minimise any risk of scalding, users must be aware that these are not fail safe. The temperature of the unit must be independently verified on each occasion it is used-this should be tested, ideally with a calibrated thermometer. Refer to Kingkraft if the water is too hot or too cold and do not use until the problem has been corrected.

Operating Instructions

The Contour Bath is fitted with a drop down side door which opens and closes using a manual locking mechanism.

To open the door:

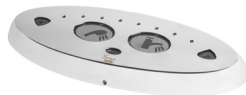
- Before opening, ensure that no fingers, toes, limbs or any other body parts will get trapped in the door
- Turn the lock handle to the right
- Then turn the open handle to the left
- The door should now open - make sure the door is fully pressed down before using

To close the door:

- Before closing, ensure that no fingers, toes, limbs or any other body parts will get trapped in the door
- Push the door upwards so it is flush with the bath sides
- Turn the lock handle downwards only to lock the door, this should now be secure

Tap Instructions

Your Contour Bath will have been fitted with a RADA Sense Infrared Thermostatic Mixer Tap (which will look like the below) , if you have any other type of tap, please refer to individual manufacturing instructions.



The control panel can be mounted on the bath tub, a bracket or wall mounted near to the bath.

Move your hand in front of the 'bath fill' or the 'shower' (if applicable) symbol / sensor to start the flow of water for the bath or shower.

The temperature of the water can be increased by holding / waving a hand in front of the red 'hot' sensor on the right of the control panel. The temperature of the water can also be reduced by holding / waving a hand in front of the blue 'cold' sensor on the left of the control panel. Lights will indicate where between the minimum and maximum temperature the water temperature is currently set. To stop the bath (or shower) filling, hold / wave a hand in front of the 'bath fill' (or 'shower') symbol. The above bath fill options are set by Kingkraft commissioning engineers (if this has been specified) to a maximum temperature of 44 degrees when the bath/shower valve control is fully turned/set at its maximum. Always allow time for the mixed water to run through the systems. With some boiler systems there can be some temperature fluctuation when the tap/shower is first turned on, let this stabilise before continuing to fill the bath up or use the shower. **Ensure the temperature is checked before placing someone in the bath as there is a risk of scalding.**

Operating the waste

The waste is operated by using the 'handle' situated on the side of the bath.

-Pull the 'handle' up to close the waste, press the plug down with your hand to make sure the plug is properly sealed before filling.

-To empty, simply *push* the 'handle' down and the plug will open up to allow the water to drain away.

Operating the 'up and down' mechanism

Firstly ensure that no person(s) or objects can be damaged if the bath is raised or lowered

To raise the bath:

Press the 'up' button on the handset to raise the bath upward, release the button when it has reached the desired position.

To lower the bath:

Press the 'down' button on the handset to lower the bath down, release the button when it has reached the desired position.

Accessories

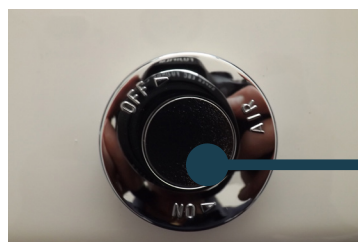
The additional accessories below are standard accessories available for the Kingkraft Contour, you may have additional or different ones fitted on your bath, always refer to the manufacturing instructions for safe use.

Whirlpool, lights, music and cushions

To start the whirlpool:

Press down the on/off control button on the whirlpool button located on the edge of the bath.

To increase the pressure of the whirlpool in the bath, turn the control button either clockwise to increase or anticlockwise to decrease.



On/Off switch

Adjusting the eye ball jets:

These can be adjusted by placing your finger in the jet hole and turning it to the desired position.

Switch on/off:

Simply press the middle button for on/off

Whirlpool pump protection:

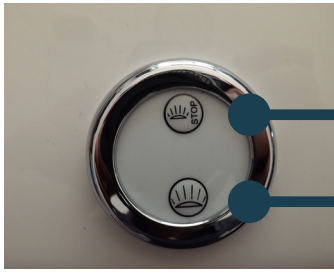
Should the whirlpool system be accidentally operated at any time with insufficient water, the dry run protection unit will automatically switch the pump off. The whirlpool system can only then be started when there is sufficient water in the bath. The whirlpool will automatically shut off after 20 minutes. (You may restart it if required) Always have regard to the users medical conditions and state of health when using the whirlpool.

NOTE: Normal bubble baths will froth excessively with whirlpools and can pose a major safety risk to the user and potentially cause damage to surrounding fittings. It is essential that a low foaming bubble bath mixture is used and no one is left in the bath unattended at any time.

Please refer to cleaning instructions on how to keep your whirlpool clean.

Lights

Your bath may be fitted with integral lights to help create a sensory experience whilst bathing. There may be risk to some users, so always check with medical experts before use if you are unsure.



Turn lights on/off

Change sequence of lights

Music

Your bath may be fitted with the integral Bluetooth music system, if so simply connect via any device that has 'in built' Bluetooth i.e Smartphone, Tablet etc. Search for 'Soundbathe' and connect and listen away whilst you bathe.

Cushion and Supports

Kingkraft offer a range of supports and cushioning to make bathtime more relaxing. Separate instructions will be enclosed with your cushioning, however please see below information on how to safely use your cushions.

Our cushions are made from PCV and foam filler or polysterene beads. **Ensure that no person is allergic to these materials before use.**

There is a risk of floating, therefore please ensure that the cushions and supports are securely fastened to the bath before use.

- Ensure that the bath bottom and mattresses/suckers are clean
- Place cushions/supports securely onto base/side of bath
- Run a small amount of water into the bottom of the bath
- Press the cushions/supports firmly onto the bath

Do not use any oil based bathing products as this could affect the suckers sticking to the bath.

When removing the cushions/supports, take care that each sucker is prised carefully away from the bottom/side of the bath to avoid a tearing action. If the cushion rips around the suckers this is not covered under any manufacturing warranty and you will be charged to replace it. Make sure your cushion and supports are cleaned regularly.

Installation

Your Contour should have been installed by a competent installer. The bath should have been commissioned and a commission certificate produced. If you are unsure about the safe installation of your bath, please contact Kingkraft immediately.

If you have to move or re-install your bath for any reason, Kingkraft are able to carry out this work, just get in touch with us for more information. In all cases, we recommend that we carry out any installation/commissioning work.

Units with electrical services must only be wired in accordance with the IEE Wiring Regulations, especially as regards zoning equipotential bonding. Kingkraft products are intended for operation only in a bathroom type location where exposed mains connections and unsealed switches etc are not permitted.



This unit must not be connected via a plug and socket

Maintenance

Your Contour Bath comes with a 2 year manufacturing warranty, this is for labour and parts only. Kingkraft recommend an annual service on the Contour
Kingkraft can carry out an annual service, please get in touch to find out further information.

Fault Finding: If your bath is not going up and down but making a 'beeping noise'

- Firstly check that the power supply has not been turned off to the bath.
- To check whether there is power, if possible and is safe to do so, check underneath the bath to see whether there is a green light on the control box. Alternatively, if you know where the main power source is for the bath, check that is not turned off.
- If your bath is still not going up and down and have you done all the checks, contact Kingkraft for further advice.

Cleaning

Do not use any cleaning agents that contain bleach or other corrosives as this can cause staining and can invalidate the warranty. Use only water, normal soaps and approved cleaning agents. We recommend using Chemgene which can be purchased via Kingkraft.

If your bath is fitted with any cushions or supports, these should be removed ideally after each use to ensure that no soap scum has built up underneath. **If these are left in the bath for a length of time, mould can quickly build up which can cause damage to health.**

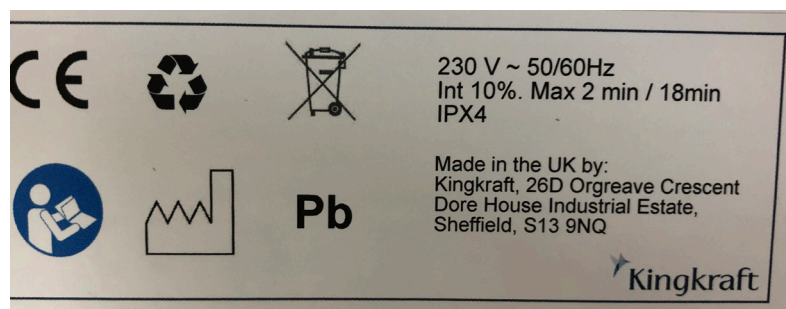
Cleaning the whirlpool (if fitted)

It is important the whirlpool is cleaned regularly, if you are in a Multi-user environment then this should be done after each use. Please follow the below guidelines on how to clean your whirlpool efficiently.

- Remove all cushions and supports in the bath (if applicable)
- Rinse any debris from the bath
- Close drain by operating the pop-up waste
- Fill the bath with water to a level of 25mm (1") above the whirlpool jets
- Put the whirlpool cleaner in (we recommend the Bronte Whirlpool 6 month care pack, but you can pick up whirlpool cleaners from most hardware stores)
- Follow the instructions on the packet
- Run whirlpool for 15 minutes (this may differ to whichever cleaner you're using)
- Drain bath
- Fill bath with clean water to measurements

Stickers and Markings on your Bath

Your Contour should have the following two stickers, if it doesn't-please make Kingkraft aware of this as soon as possible. You will find your serial number on this sticker, ensure you make a note of this and keep it safe for future reference.



WEEE (Waste Electrical and Electronic Equipment Regulations 2006)

The aim of this Directive is to minimise the impact of electrical and electronic equipment on the environment when products become waste. All electrical components on this product must be disposed of in accordance with the WEEE 2006 regulations, either through reuse, recovery, recycling or environmentally sound disposal.

If this Kingkraft product is at the end of its life cycle and is being disposed of by people other than Kingkraft engineers, please contact Kingkraft to discuss arrangements regarding the disposal of any electrical equipment.

Guarantee

Your Kingkraft Contour Bath is guaranteed for two years, this covers any breakdowns and parts for this period only. Full terms and conditions can be found on our website as to what the warranty covers.

Your bath may have been purchased with a five year warranty, if you are unsure please check upon receiving your product whether you have an extended warranty as we can not offer this once your item has been installed.

Please ensure you make a note of your serial number(s) which can be found either on the product itself or on any paperwork left by the engineer when fitted.

You should have been left a warranty card with your bath, to ensure we offer you the highest customer service, please register your details to ensure we have up to date information. You can do this by visiting **www.kingkraft.co.uk/pages/register-your-product**
We would also appreciate if you would also complete our short survey about your experience with Kingkraft.

In the unfortunate event that you experience a breakdown and you think you are still covered under warranty, please contact our main office on 0114 2690697 or info@kingkraft.co.uk.

But don't worry, if the product is out of warranty and having problems we can still attend, however charges will apply for our engineers visit, please ensure you know who would be funding this charge when you call us as we can not attend a product without prior authorisation from the bill payer.

Moving house or disposing of the bath?

If we do not know already, we would appreciate it if you are moving house or disposing of your bath that you advise us so that we can keep our records up to date.



Kingkraft Ltd 26D Orgreave Crescent, Dore House Industrial Estate, Sheffield, S13 9NQ
phone 0114 2690697 email info@kingkraft.co.uk web www.kingkraft.co.uk