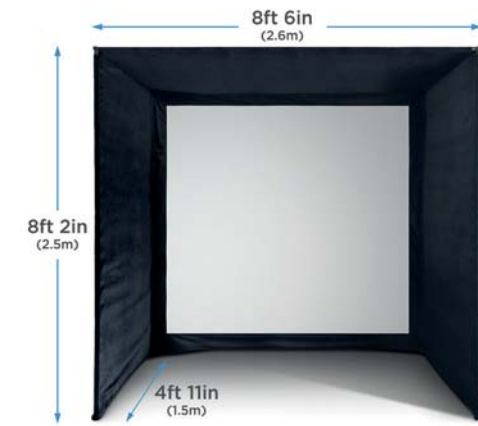


SIMSPACE

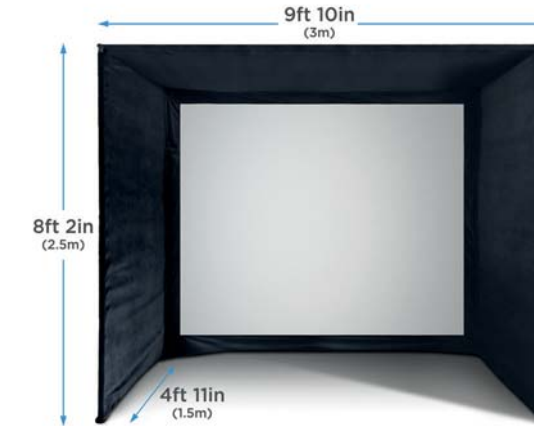
GOLF ENCLOSURES



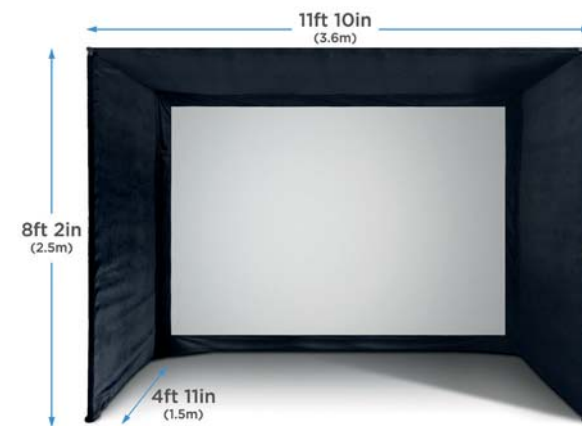
SIMSPACE ENCLOSURES:



SIM/001
W 8ft 6in x H 8ft 2in x D 4ft 11in
W 2.6m x H 2.5m x D 1.5m



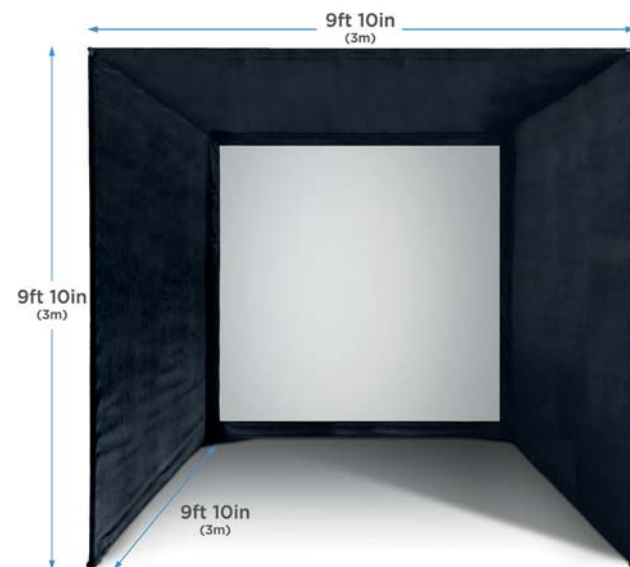
SIM/002
W 9ft 10in x H 8ft 2in x D 4ft 11in
W 3m x H 2.5m x D 1.5m



SIM/003
W 11ft 10in x H 8ft 2in x D 4ft 11in
W 3.6m x H 2.5m x D 1.5m



SIM/004
W 13ft 2in x H 8ft 2in x D 4ft 11in
W 4m x H 2.5m x D 1.5m



SIM/005
W 9ft 10in x H 9ft 10in x D 9ft 10in
W 3m x H 3m x D 3m



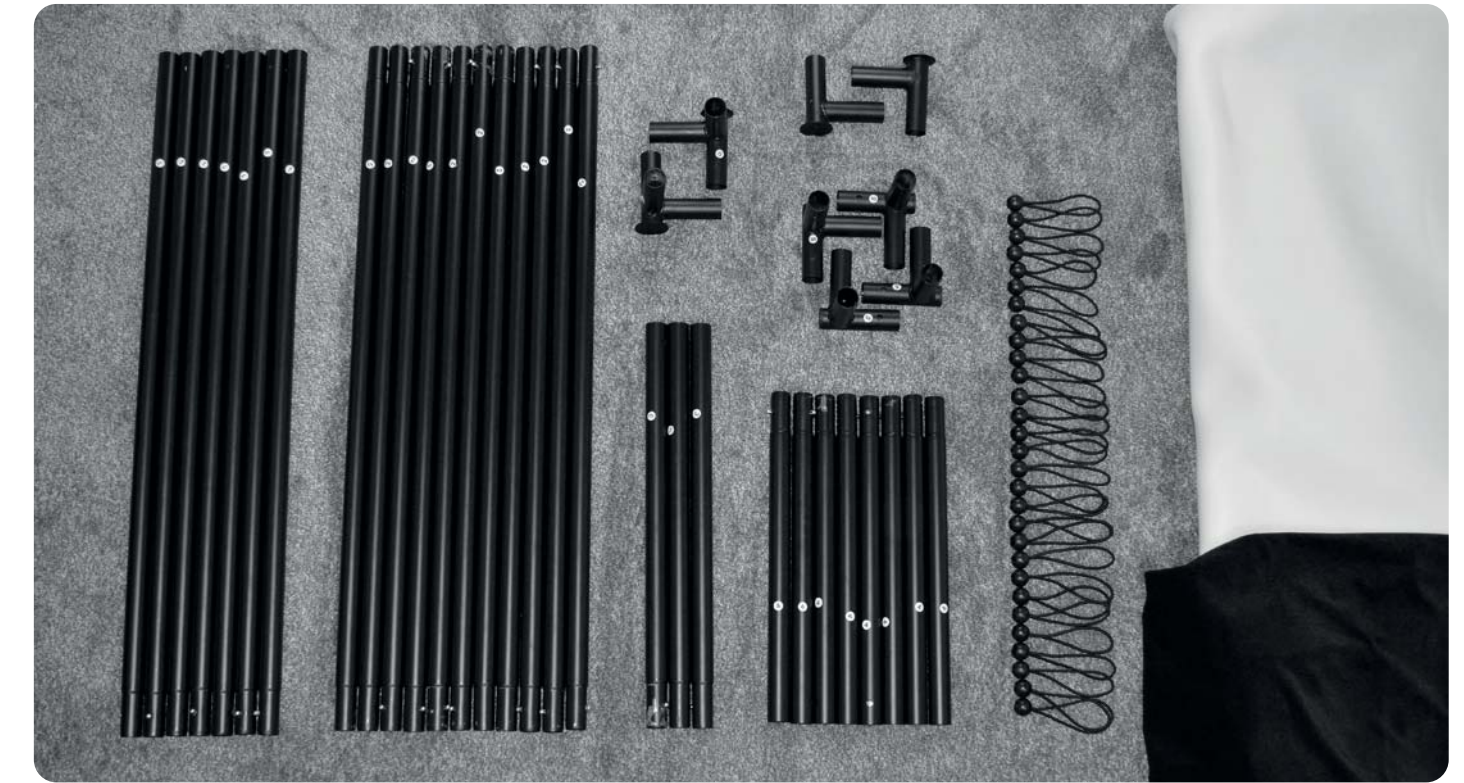
SIM/006
W 13ft 2in x H 9ft 10in x D 9ft 10in
W 4m x H 3m x D 3m

STEP 1:

SCAN FOR
ASSEMBLY VIDEO



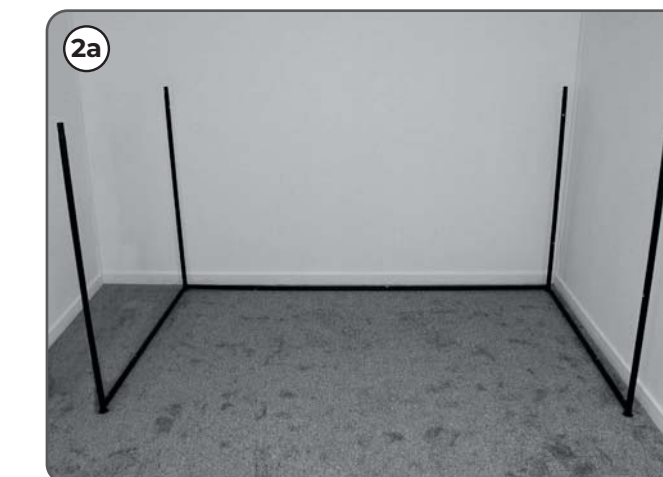
For ease of assembly, lay out all the pieces and have the poles arranged in size order (see image below). Quantities will vary depending on model.



STEP 2:

Start building the enclosure by placing the base corner units and joining poles to make the base frame as shown below. Lay the fabric down making sure the velcro straps are at the back and the plush side of the fabric is face down.

Please note - Be sure to leave at least 1ft (30cm) of space behind the impact screen and minimum 3in (8cm) on each side of the enclosure for buffer space.



ASSEMBLY INSTRUCTIONS

STEP 3:

Insert the top centre poles through the fabric pockets on both sides. Then connect these poles to the upper side sections as shown in the images below.



STEP 4:

Next attach the front centre poles to both top corners to complete the frame of the enclosure.



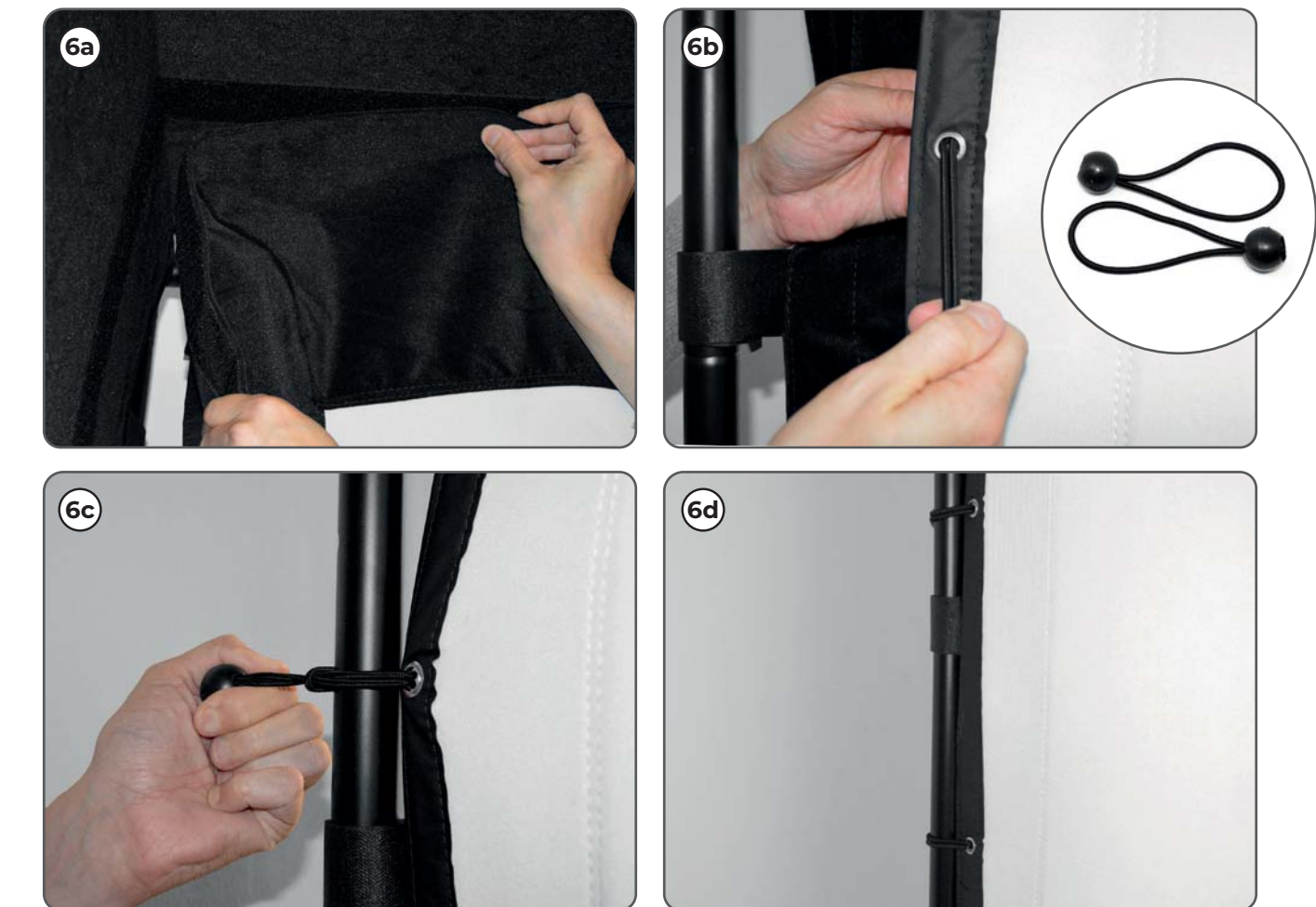
STEP 5:

First secure the velcro around the front poles and then around the base poles. Next attach all the rear velcro straps around the rear poles and tighten the fabric.



STEP 6:

Attach the impact screen to the inner velcro strips starting with one of the corners. Finally secure the bungee toggles to the rear of the screen and around poles. These will tighten the screen and remove any slack.



SCAN FOR
ASSEMBLY VIDEO



SIMSPACE
GOLF ENCLOSURES

Customer service contact:
customerservice@secondchance.co.uk