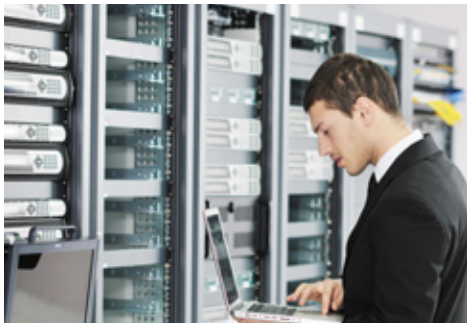




Eliminate the risk of providing your own HVAC system for a specialty environment *with a pre-engineered, pre-packaged Wine Guardian Pro system.*



*Split Systems*  
Pre-engineered for specialty environments and hotspots such as

- Fur storage
- Wine Cellars
- Cigar storage
- Instrument Storage
- Art storage
- Server rooms





# Ductable Split Systems

**Ductable split systems are** the most versatile specialty cooling system on the market for customers who expect the most advanced technology in a specialty cooling unit. Applications include wine cellars, art or document preservation, instrument or fur storage, computer closets, niche environments, and more; these units can be used in nearly any application.

### All Inclusive

- **3,400 to 14,900 BTU/H** cooling capacities
- 24-volt electronics for use with today’s smart thermostats and building management systems
- Enhanced refrigeration controls
- High ambient protection

### Flexible

- Utility piping in one easily accessible location
- Multiple evaporator outlet locations (Any of five sides)
- Versatile, space-saving slimline condensing unit is ideal for wall and pad mounting

### Durable

- Aluminum body and **all-aluminum** evaporator coils (fins & tubes) are **corrosion-resistant**
- Standard high static pressure fan for extended lengths of ductwork
- Completely serviceable in the field

### Unique Options

- Bolt-on humidifier
- Electric heat
- Moniteur Du Vin wine cellar monitoring system
- X-treme low-ambient controls on condensing unit for -20°F (-7°C) operation



## System Specifications (BTUH)\*

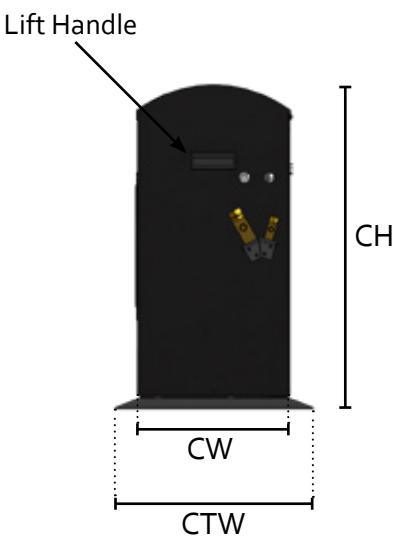
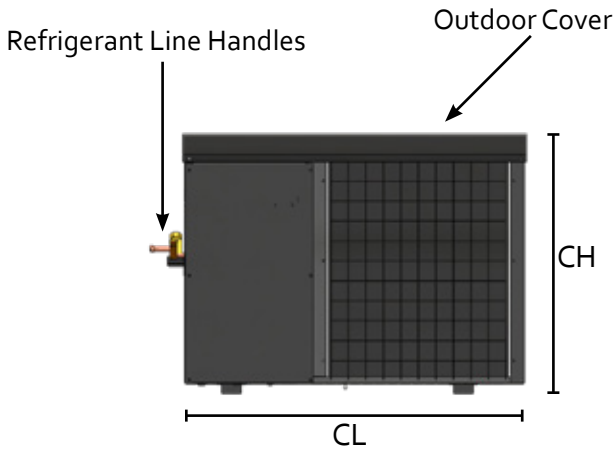
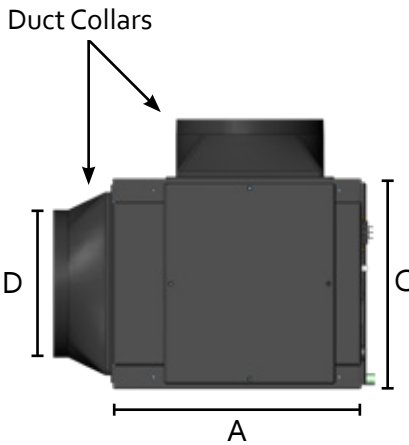
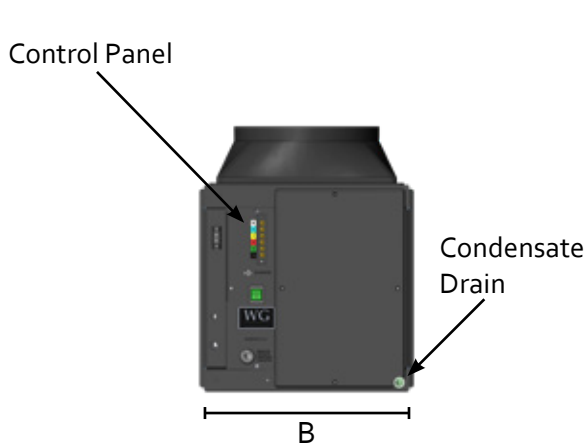
Model	Wine Cellars (55°F/57%)	ASHRAE (80°F/50%)	Heat (kW)	Voltage (Hz)
<a href="#">SP25</a>	3,400	4,180	1.0	115
<a href="#">SP50</a>	6,300	7,760	1.0	115
<a href="#">SP88</a>	9,600	10,690	2.0	230
<a href="#">SP200</a>	14,900	20,100	2.0	230

\* See detailed specifications for complete product performance specifications, above table to be used as a guide only, based on 90°F condenser inlet conditions and maximum evaporator airflow at 0.0” esp.

Maximum advisable operating conditions are ASHRAE rating conditions of 80/50% indoor at 95°F outdoor.



# Ductable Split Systems



## System Specifications\*

Model	A	B	C	D	Weight	Outdoor Condenser**				
						CL	CW	CTW	CH	Weight
<a href="#">SP25</a>	17.21	14.91	14.13	8.0	25	34.00	12.00	16.00	26.00	57
<a href="#">SP50</a>	17.21	22.92	14.13	10.0	35	34.00	12.00	16.00	26.00	75
<a href="#">SP88</a>	17.21	22.92	14.13	10.0	37	34.00	12.00	16.00	26.00	100
<a href="#">SP200</a>	20.83	23.00	18.00	12.0	56	34.00	12.00	16.00	26.00	125

Note: Length, Width and Height in inches (in.); Weight in pounds (lbs.)  
 \*Specifications are subject to change  
 \*\*Wine Guardian Condensing unit is patented.  
 US Patent No. D791294. EU Patent No. 003189349-0001

Rev 9/19