



**12HP & 10.5HP
1995 -1998
09C95 – 43H95**

STOCKMAN 10.5HP

43H95 OPERATING & MAINTENANCE INSTRUCTIONS

IMPORTANT

RECOMMENDED FUEL

Unleaded fuel is recommended by all manufactures of engines fitted to CMMC products.

DRIVE PRESSURE

Ensure when applying pressure to the drive pedal the wheels start rotating, failure to adhere to this will result in clutch plate and clutch cone damage.

SAFETY MICRO SWITCHES

Before operating, ensure all micro-safety switches are operating correctly. Do not operate machine with faulty, missing or damaged safety micro-switches.

STARTING MACHINE

When starting electric start machine, place right heel on micro switch located on rear of footrest. Ensure that cutter is disengaged, otherwise electric starter motor will not engage. If engine is cold move throttle to cold start position and return to desired throttle setting when engine starts. Do not attempt to operate engine with throttle lever in cold start (choke) position. (Note electric start engines fitted with recoil can be manually started with cutter disengaged and ignition on).

BLADE WARNING

Do not use mowing attachment with broken or bent blades, damaged or worn bolts and nuts or damaged cutter disc, otherwise damage and premature wear will result from vibration. Replace blades, bolts and nuts only in pairs to maintain correct balance.

KEEP FEET AND HANDS CLEAR OF MOWING ATTACHMENT WHEN STARTING OR OPERATING MACHINE.

WARNING

DO NOT USE WITHOUT DEFLECTOR

Safety foot wear is recommended when operating machine.

Mount and dismount only from left hand side of machine.

Reference to left or right hand side of machine is determined by sitting in the operating position on the machine.

Make sure ignition switch is turned to the off position And Key Removed For Security when machine is not in use.

Never allow engine revs to exceed more than 3600 RPM.

TO OPERATE

BEFORE STARTING: See Engine Maintenance/Instruction Sheet.

DISENGAGING MOWING ATTACHMENT: The Disengaging lever is situated on the right hand side by the steering column. Before starting, disengage mowing attachment by pulling lever fully to the operator. For safety It is advisable at all times, other than when mowing, that the mowing attachment be kept in the disengaged position.

TO DRIVE FORWARD/REVERSE: Power is regulated by the throttle. Set throttle control to desired engine power. Press down on the forward section of the clutch pedal for forward movement, on the rear of the clutch pedal for reverse. The amount of pressure can be used to control the ground speed, especially in heavier conditions.

MANOEUVRING: Owing to the heel and toe type action of the drive pedal, it is possible to take the machine straight from forward to reverse and vice versa. This instant forward and reverse operation makes the machine very manoeuvrable and the sharpest turns can be negotiated easily and quickly.

TO BRAKE (WITH ENGINE RUNNING): The clutch may be used to stop the machine. If travelling forward push the pedal into reverse until machine stops, then bring the pedal back to neutral position or vice versa if travelling in reverse. Should a failure occur during operation use the emergency stop brake pedal situated on the left hand side and forward of where your foot would normally rest during normal operation.

TO BRAKE (WITH ENGINE STOPPED): Use the emergency brake only. Damage to clutch cone will occur if clutch pedal is used to brake the machine with the engine stationary.

PARKING AND TRANSPORTATION BRAKE: Depress the lever protruding out of the left hand mudguard downward and shift the lever to the left to engage the brake. Depress and shift to the right to release.
DO NOT ATTEMPT TO ENGAGE THE PARKING BRAKE UNLESS THE MACHINE IS STATIONARY.

CUTTING HEIGHT ADJUSTMENT: The height adjustment lever is located on the left hand side of the machine and may be altered to suit varying conditions, while the machine is in motion.

NOTE: When mowing slopes, leave machine in forward drive when going down hill. The low gearing will prevent it from picking up excessive speed. If very steep it may be necessary to throttle back slightly. Avoid holding machine on slopes using clutch with engine running and machine stationary as damage will occur to clutch plates.

MAINTENANCE INSTRUCTIONS

IT IS THE OWNERS RESPONSIBILITY TO ENSURE THAT ALL PERIODICAL CHECKS, NECESSARY ADJUSTMENTS AND SERVICES ARE CARRIED OUT.

STOP ENGINE – NEVER ATTEMPT ANY FORM OF SERVICE OR ADJUSTMENT WITH ENGINE RUNNING, REMOVE SPARK PLUG LEAD. MAKE SURE THE BLADES HAVE STOPPED ROTATING BEFORE CARRYING OUT ANY ADJUSTMENT.

1. **OIL CHANGING (ENGINE):** See Engine Maintenance/Instructions Sheet and carry out as per Engine Manufacturers Recommendation.
2. **LUBRICATION OF MACHINE:** Lubrication of machine should be carried out every 25 hours of operation or once a month, whichever falls due first. Service engine and lubricate machine more frequently under adverse conditions.
 - A. **OILING:** A few drops of oil should be placed at the following points:- steering column shaft (top and bottom), steering linkage, disengaging linkages, height adjustment mechanism, pivot bolt and linkages on clutch arm and clutch pedal.
 - B. **CHAIN:** Use only chain lube for lubrication the drive and steering chains.
 - C. **GREASE POINTS:** Grease nipples are located on the front wheel stub axle bushes.

UNDER NO CIRCUMSTANCES ALLOW GREASE OR OIL TO COME INTO CONTACT WITH THE CLUTCH CONE OR THE CLUTCH PLATE. SHOULD THIS OCCUR, CLEAN OFF IMMEDIATELY WITH PETROL WHILST SURFACES ARE COOL AND ALLOW TO DRY BEFORE USE.

3. **TO CHECK BLADES:** Stop engine. Remove spark plug lead. Lift windrower and height adjustment control to highest position. If necessary simply remove the blade bolt and nut using a suitable spanner and replace worn parts.
4. **CUTTER TO CLUTCH VEE BELT:** Tension is automatically adjusted by the belt tensioning springs. However, as the belt stretches it will be necessary to lower the rear of the cutter housing by loosening the rear lifting link nut to level the cutter housing and vice versa when a new belt is fitted. Check belt tension and level cutter at machine service period (every 25hrs or more frequently is required).
5. **ENGINE TO CLUTCH VEE BELT ADJUSTMENT:** Loosen the four engine mounting bolts. Move engine forward and adjust belt firmly. Do not over tension. While maintaining tension on the engine re-tighten bolts. Check belt tension at machine service period (25hrs) or more frequently under heavy mowing conditions.
6. **DISENGAGING ADJUSTMENT:** With mowing attachment in middle cut position, and the disengagement handle in the engaged position, the handle should be approximately parallel to footrest angle or rests on chassis stop. Due to normal wear in cutter to clutch vee belt, clearance will reduce. When clearance is reduced to zero, adjustment will be necessary to the disengagement adjuster and cutter head brake assembly. With the disengagement handle in the engaged position and mowing attachment in middle cut, remove 'R' pin and washer from disengagement adjuster, pull out adjuster from mounting pin. Hold handle parallel to footrest (or against stop). Screw adjuster in or out so that when installed mounting pin is positioned in the centre of the slot. Replace adjuster, washer and 'R' pin.

7. CUTTER BRAKE ASSEMBLY ADJUSTMENT: With disengagement handle in engaged position and mowing attachment in middle cut, normal clearance between cutter head pulley and cutter head brake pad is approximately 3mm (1/8"). To adjust clearance, remove 'R' pin from brake pull rod, adjust to give required clearance, replace brake pull rod and 'R' pin. Check operation after adjustment.

8. CLUTCH PLATE ADJUSTMENT: Periodically it will be found necessary to adjust the clutch plates as the clutch cone wears. Carry out this operation, with engine off and cutter in the engaged position, first loosen the lock nuts and set screws holding the plates in position. Position the clutch cone assembly into centre position. Slide the reverse (LH) clutch plate over to touch the clutch cone and tighten the set screws. Move the forward (RH) plate until approximately .8mm (1/32") from the clutch cone. Tighten the set screws and lock nuts.

9. DRIVE CHAIN: Adjust chain as required by loosening the two retaining bolts inside transmission housing and wind adjuster nut (next to right hand rear wheel) in until the chain slack has been taken up. Re-tighten retaining bolts. **Do not** overtighten chain. Replace chain when chain has sagged enough to expose half the depth of the teeth on the bottom of the large sprocket. Failure to replace worn chain will cause premature wear of sprockets.

10. TO ADJUST STEERING CHAIN: Adjust chain by loosening the four bolts which hold the steering idler shaft mounting brackets (AM255) in position, slide forward to tension chain then retighten bolts.

11. TO REMOVE MOWING ATTACHMENT: Remove weight compensating spring. Remove 'R' pins from front pivot rod, rear lifting link and cutter brake adjusting rod. Remove rear lifting link from mowing attachment and cutter brake rod from chassis, raising mowing attachment to mid-height position, disengage mowing attachment, remove belt; remove pivot rod. Tilt machine toward left hand side and slide attachment from under machine. To refit, reverse the above.

12. TYRE PRESSURE: 140 Kpa (20.P.S.I.) approximately front and rear. Uneven pressure can give an uneven finish when mowing and may cause damage to tyres and/or tubes.

13. BATTERY MAINTENANCE: Maintain electrolyte fluid level just above plates by topping regularly with distilled water. When not in use, a battery discharges by as much as 1% a day, more when the climate is warm. To make up for this loss, a boosting charge should be given once a month. Disconnect battery terminals to charge, then allow to stand minimum 1/2hr before re-connecting (re-check electrolyte level). If a battery is not used for a period of more than three (3) months, the terminals should be disconnected and trickle charge at two (2) amps for two (2) hours once every three (3) months or before use.

14. SEAT ADJUSTMENT: Loosen four seat mounting bolts and slide seat into desired position in slots and re-tighten bolts.

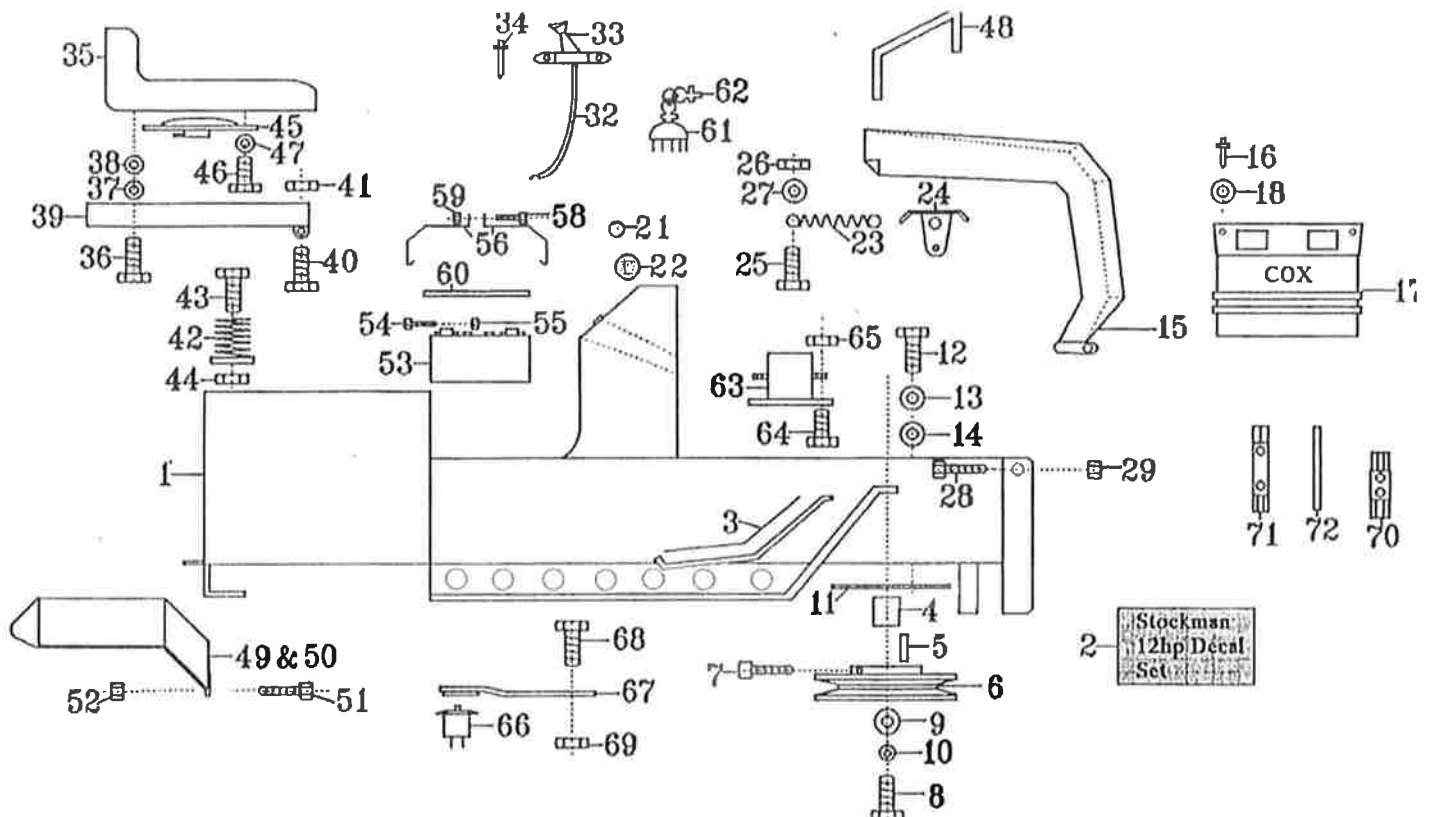
15. GENUINE SPARE PARTS: Always use Genuine Cox Factory Made Spare Parts. Use of non genuine COX spares will void your warranty.

16. SAFETY FIRST: The use of any mechanical appliance can cause injury if incorrect procedures are used. Please ensure that all family members of intended operators read thoroughly the COX CARE AND SAFETY TIP booklet enclosed with your operator instructions.

We are proud that you have purchased a CMMC product and urge you to follow these instructions to obtain the maximum life from your machine. If in doubt check with your Supplier.

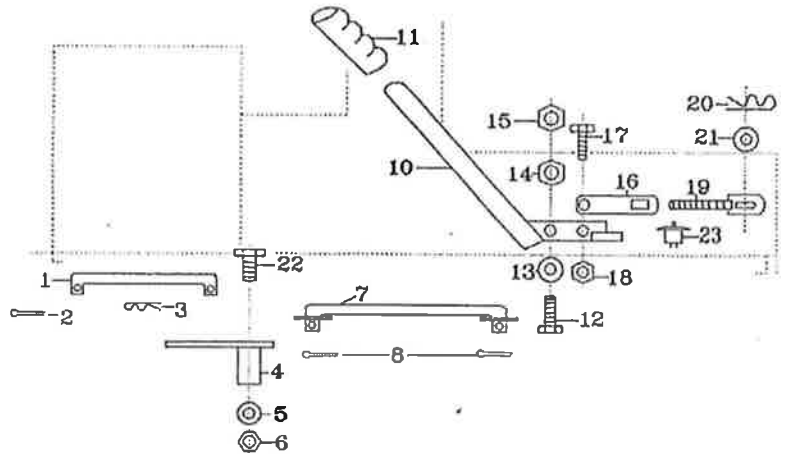
STOCKMAN 09C95 & 43H95 GROUP 11: CHASSIS & COMPONENTS

Ref No.	Part No.	Description	Ref No.	Part No.	Description
1	251101C96	Chassis NLA	37	W05S	Seat Ret. S/P Washer (4)
	431101C96	Chassis Model 43H95 NLA	38	W052003	Seat Ret. Bolt Washer (4)
2	DEC43H9510.5	S/man 10.5HP Decal Set NLA	39	AM226B99F	Seat Mount
	SDEC09I312.0	S/man 12HP Decal Set NLA	40	SH0516C	Seat Mount Hinge Bolt (2)
3	NSM01	Non-Skid Material Clutch Pedal	41	N05CN	Hinge Bolt Nut (2)
4	AM233	Engine Pulley Spacer	42	AM177	Seat Spring (2)
5	AM175	Engine Pulley Key	43	SH0612C	Seat Spring Ret. Bolt (2)
6	AM234	Engine Pulley NLA USE KIT204	44	N06CN	Ret. Bolt Nut (2)
7	GS0505C	Engine Pulley Key Screw	45	AM165	Seat Micro Switch NLA
8	SH0720F	Engine Pulley Retaining Bolt	46	SR0408W	Seat Micro Attach Bolt (2)
9	W072004	Eng. Pulley Ret. Bolt Washer	47	W04S	Seat Micro Attach Washer (2)
10	W07S	Ret. Bolt Shakeproof Washer	48	AM179	Bonnet Trim
11	AM078B0	Engine Mtng Bolt Plate (2)	49	AM302	Mudguard LH NLA
12	B0524C	Engine Mounting Bolt (4)	50	AM303	Mudguard RH
13	WS050216	Mtg. Spring Washer (4)	51	SH0412C	Mudguard Ret. Bolt (4)
14	W051216	Engine Mtng Bolt Washer (4)	52	N04CN	Mudguard Ret. Bolt Nut (4)
15	AM235H3B	Bonnet NLA	53		Battery
16	PR0207	Bonnet Grill Rivet (4)	54	SH0412C	Terminal Bolt (2)
17	AM224F3NL	Bonnet Grill No Lights	55	N04C	Terminal Bolt Nut (2)
18	W020516	Bonnet Grill Rivet Washer	56	AM300	Battery Clamp (2)
21	091130	Dash Plug Small	58	SR0420C	Battery Clamp Screw
22	091131	Dash Plug Large	59	N04C	Clamp Screw Nut
23	AM180	Bonnet Spring (2)	60	AM098M8	Battery Cover
24	AM181	Bonnet Strap (2)	61	AM014	Ignition Switch
25	SH0408C	Bonnet Spring Bolt (2)	62	AM015	Ignition Switch Key (2)
26	N04CN	Bonnet Spring Nut (2)	63	AM159	Solenoid
27	W040816	Bonnet Spring Washer (2)	64	SH0412C	Solenoid Mounting Bolt (2)
28	SH0412C	Bonnet Hinge Bolt (2)	65	N04CN	Solenoid Mtng Bolt Nut (2)
29	N04CN	Bonnet Hinge Bolt Nut (2)	66	AM092	Micro Switch NLA
32	KIT51S2	Throttle Cable c/w Lever	67	AM100R2	Foot Micro Spring Plate NLA
33	AM088	Throttle Lever	68	SH0408C	Spring Plate Bolt
34	PR0306	Throttle Lever Rivet (2)	69	N04CN	Spring Plate Bolt Nut
35	AM164	Seat NLA	70	AM005G0	Spark Plug Spanner
36	SH0512C	Seat Retaining Bolt (4)	71	AM006C1	Tube Spanner
			72	AM007	Tommy Bar



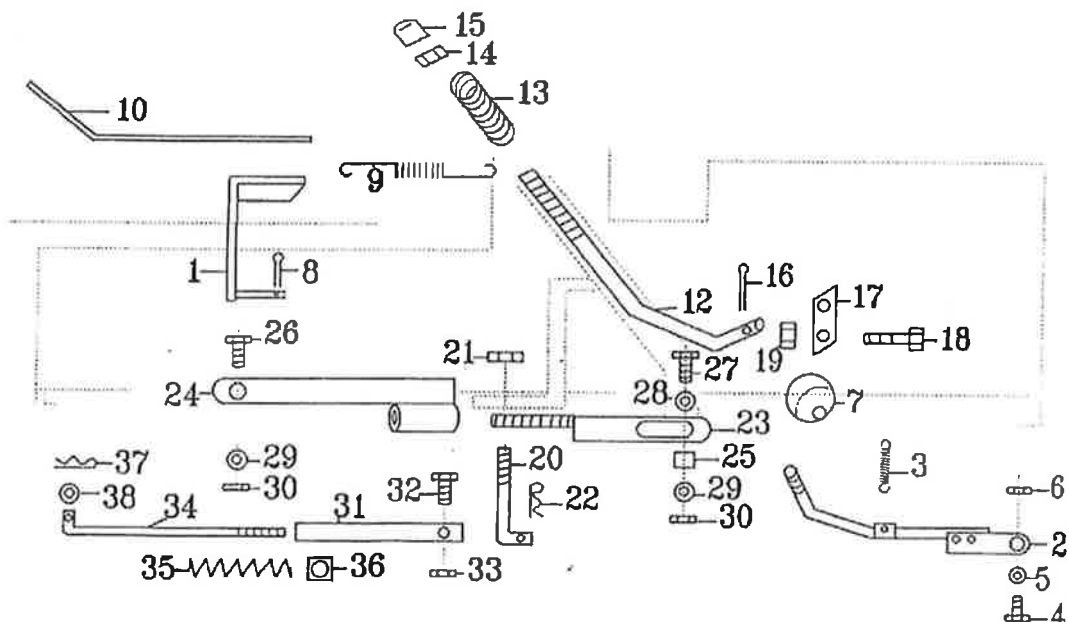
STOCKMAN 09C95 & 43H95 GROUP 12: RIGHT HAND SIDE OF CHASSIS

Ref No.	Part No.	Description
1	AM238	Clutch Rod Short
2	CP3-220	Clutch Rod Short Split Pin
3	RP01	Clutch Rod Short 'R' Pin
4	AM182E94	Clutch Rod Short Pivot Plate
5	W061216	Clutch Rod Pivot Plate Washer
6	N06CN	Clutch Rod Pivot Plate Nut
7	251201	Clutch Rod Long
8	CP3-220	Clutch Rod Long Split Pin (2)
10	AM239H0	Disengaging Handle
11	AM335	Handle Grip
12	B0628C	Disengaging Handle Pivot Bolt
13	W061216	Pivot Bolt Washer (2)
14	N06C	Diseng Handle Pivot Bolt Nut
15	N06CN	Pivot Bolt Locknut
16	AM240	Disengaging Adjuster Bushed
17	SH0512C	Disengaging Adjuster Bolt
18	N05C	Disengaging Adjuster Bolt Nut
19	AM241	Disengaging Adjuster Threaded
20	RP01	Disengaging Adjuster 'R' Pin
21	W051216	Disengaging Adjuster Washer (2)
22	B0636C	Clutch Pivot Plate Bolt
23	AM092	Disengaging Micro Switch NLA



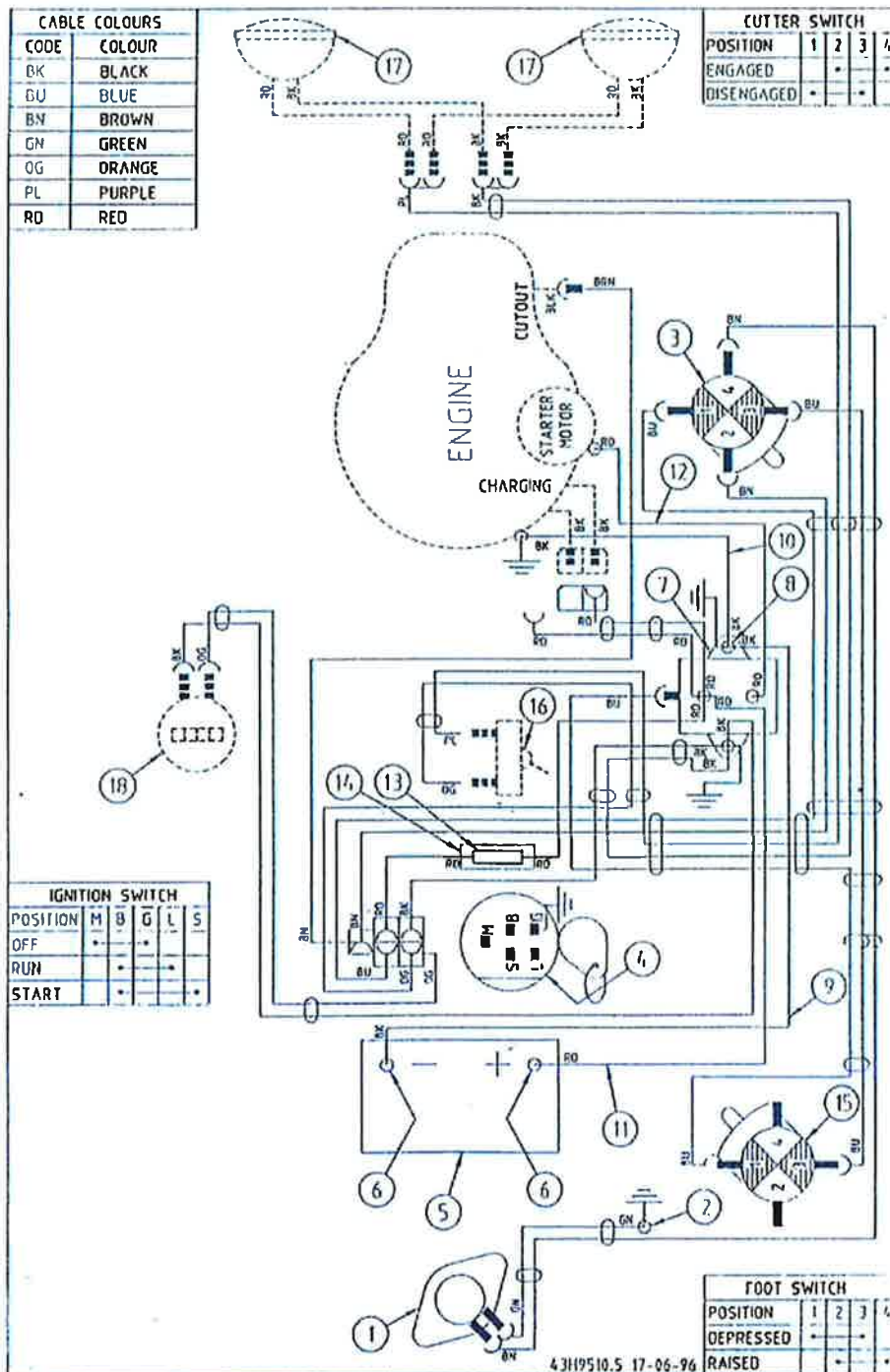
STOCKMAN 09C95 & 43H95 GROUP 13: LEFT HAND SIDE OF CHASSIS

Ref No.	Part No.	Description	Ref No.	Part No.	Description
1	AM285	Brake Pedal	20	AM185B0	Cutter Housing Lifting Link
	NSM02	Brake Pedal Non Skid Material	21	N06CN	Cutter Lifting Link Nut
2	AM284G05	Hand Park Brake	22	RP02	Cutter Lifting Link 'R' Pin
3	AM288	Hand Brake Spring	23	AM267	Front-Rear Con. Rod Thrd
4	SH0616C	Hand Park Brake Bolt	24	AM268	Front-Rear Con. Rod Bushd
5	W061216	Hand Park Brake Washer	25	AM249	Connecting Rod Bush
6	N06CN	Hand Park Brake Nut	26	SH0616C	Front-Rear Con. Rod Bolt
7	AM290	Hand Brake Knob	27	B0620C	Front-Rear Con. Rod Bolt
8	CP3-220	Brake Pedal Split Pin	28	W0620HD	Conn. Rod Rear Bolt Washer
9	AM183	Brake Pedal Spring	29	W061216	Conn. Rod Bolt Washer (2)
10	13094	Non Skid Material-Foot Rest (2)	30	N06CN	Connecting Rod Bolt Nut (2)
12	AM143M9	Height Adj. Push Rod	31	AM034H0	Cutter Brake Adj. Bracket
13	AM012	Hght Adj. Push Rod Spring	32	SH0512C	Brake Adj. Bracket Bolt
14	N04C	Hght Adj. Push Rod Nut	33	N05CN	Brake Adj. Bracket Bolt Nut
15	AM013Q2	Hght Adj. Push Rod Button	34	091310	Cutter Brake Adjusting Rod
16	CP2-512	Hght Adj. Rod Split Pin	35	AM035	Cutter Brake Spring
17	AM011	Height Adjustment Pawl	36	NS05C	Cutter Brake Adj. Rod Nut
18	SH0516C	Height Adj. Pawl Pivot Bolt	37	RP01	Cutter Brake Adj. Rod 'R' Pin
19	N05CN	Hght Adj. Pivot Bolt Nut	38	W051216	Brake Adj. Rod Washer



STOCKMAN 09C95 & 43H95 GROUP 14: ELECTRICAL 10.5HP

Ref No.	Part No.	Description	Ref No.	Part No.	Description
1	AM165	Seat Micro NLA	12	13115	Lead-Starter-Solenoid (Red)
2	SH0408C	Seat Micro Earth Switch	13	SAM104	Fuse (10amp) NLA
	N04CN	Seat Micro Earth Nut	14	SAM160	Fuse Holder NLA
3	AM092	Cutter Disen. Micro NLA	15	AM092	Foot Micro NLA
4	AM014	Ignition Switch	16	AM229	Light Switch (Opt)
	AM015	Ignition Key	17	AM228	Lamp (2) (Opt)
5		Battery PURCHASE LOCALLY		AM227	Head Lamp Holder (2)(Opt)
6	SH0412W	Battery Terminal Bolt (2)	18	AM211	Houmeter (Opt)
	N04C	Battery Terminal Bolt Nut (2)		SAM247	Houmeter Lead (Opt) NLA
7	AM159	Solenoid		AM096	Loom Clamp (2)
8	SH0408C	Solenoid Mounting Bolt (2)		PRO306	Loom Clamp Rivet (2)
	N04CN	Solenoid Mtg Bolt Nut (2)		W030820	Rivet Washer (2)
9	13116	Lead-Battery-Earth (Black)		SH0408C	Earth Lead Bolt (2)
10	13116	Lead-Engine-Earth (Black)		N04CN	Earth Lead Bolt Nut (2)
11	13115	Lead-Battery-Solenoid (Red)			

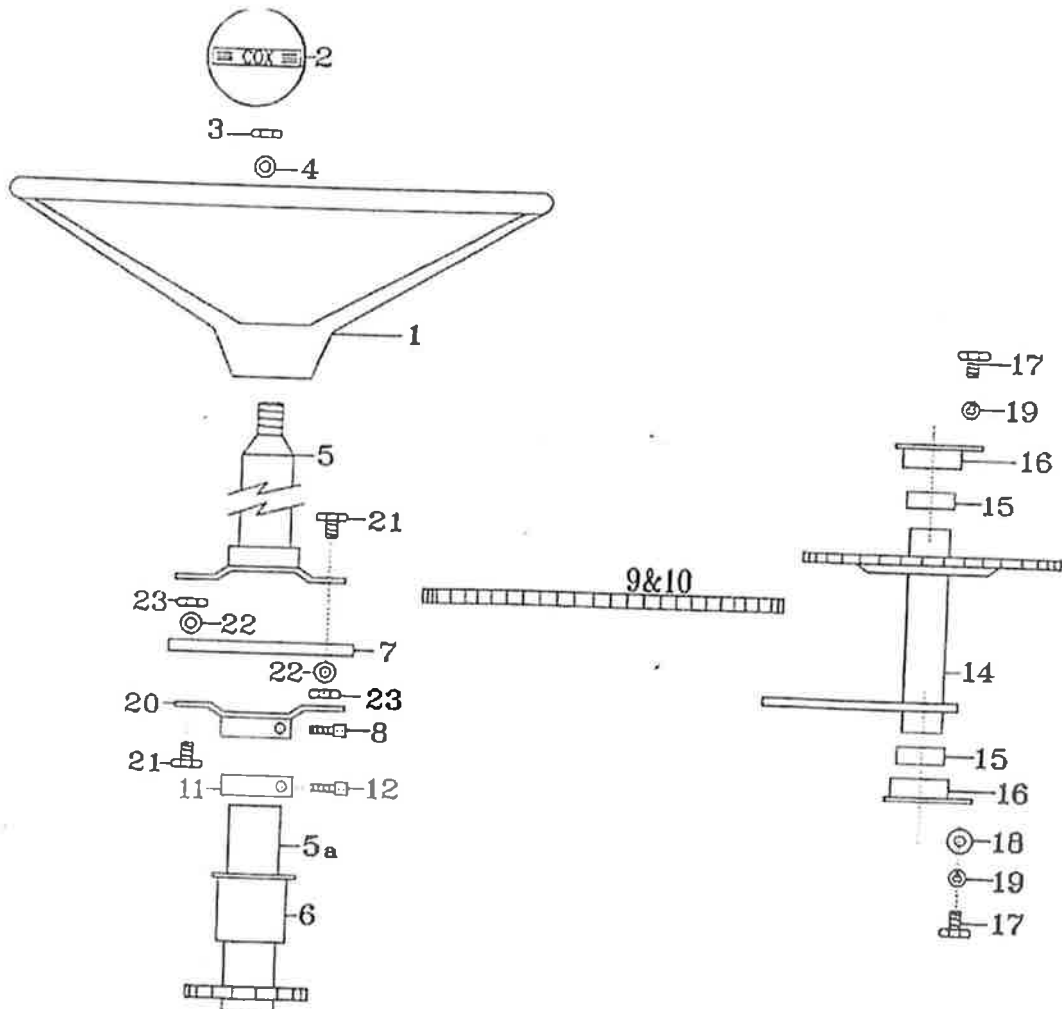




STOCKMAN 09C95 & 43H95 GROUP 15: STEERING COMPONENTS

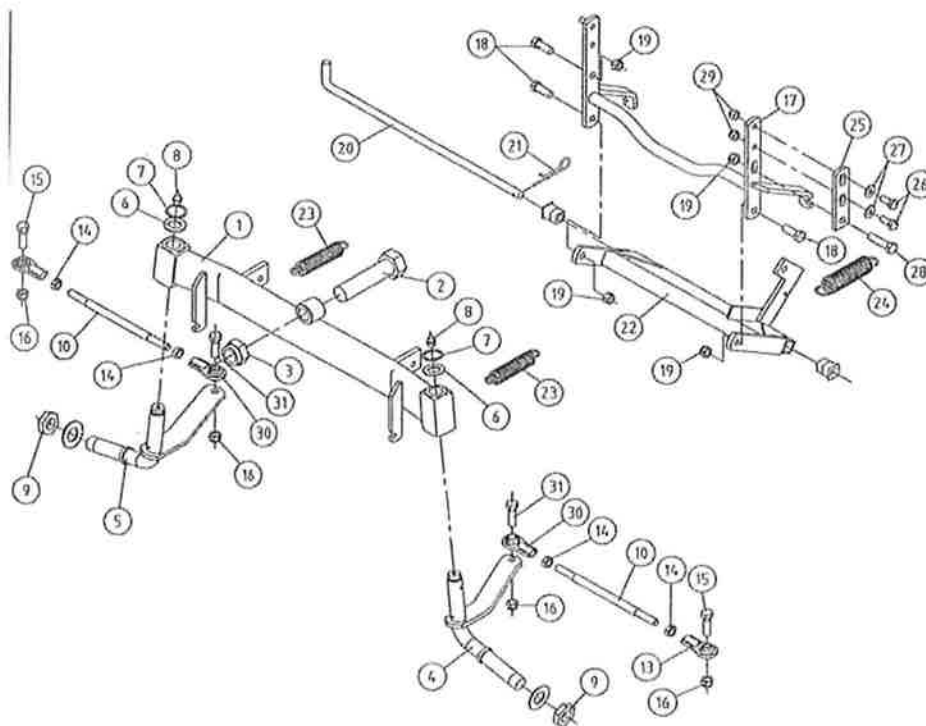
Ref No.	Part No.	Description
1 *	SKIT37	Steering Wheel Incl. Emblem
*	AM167M8	Steering Wheel
2 *	AM225	Steering Wheel Emblem
3	N06CN	Steering Wheel Nut
4	W061216	Steering Wheel Washer
5	AM250	Steering Shaft Upper
5a	AM251G4	Steering Shaft Lower
6	AM017C1	Steering Shaft Bush (3)
7	AM25399J	Steering Shaft Universal
8	GS0404C	Steering Shaft Flange Set Screw
9	AM018	Chain Incl. Link
10	SAM019	Connecting Link
11	AM066	Steering Shaft Lock Collar
12	GS0404C	Lock Collar Set Screw
14	AM331	Steering Idler Shaft
15	AM215	Steering Idler Shaft Mtg Bracket Bush (2)
16	AM255	Steering Idler Shaft Mtg Bracket (2)
17	SH0512C	Steering Idler Shaft Mtg Bracket Bolt (4)
18	W051216	Steering Idler Shaft Mtg Bracket Washer (2)
19	W05S	Idler Shaft Mtg Bracket S/P Washer (4)
20	AM252	Steering Shaft Flange
21	SH0416C	Flange Mounting Bolt (4)
22	W041216	Flange Mounting Bolt Washer (4)
23	N04CN	Flange Mounting Bolt Nut (4)

*SKIT37 Steering Wheel Incl Emblem



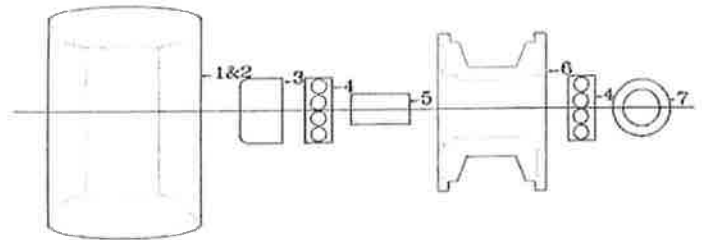
STOCKMAN 09C95 & 43H95 GROUP 16: FRONT AXLE COMPONENTS

Ref No.	Part No.	Description	Ref No.	Part No.	Description
1	AM332	Front Axle Beam	20	AM039S2	Cutter Housing Pivot Rod NLA
2	B1240W	Front Axle Pivot Bolt NLA		13016	Cutter Pin (Current Type)
3	N12CN	Front Axle Pivot Bolt Nut		NM6NT	Nut (1)
4 *	AM333	Stub Axle LH		SH0616M	Set Screw (1)
5 **	AM334	Stub Axle RH	21	RP02	Cutter Housing Pivot Rod 'R' Pin
6 */**AM336		Stub Axle Dust Cap (2)	22	AM342	Cutter Housing Conn. Link
7 */**C02		Stub Axle Circlip (2)		AM230	Cutter Housing Conn. Link Bushes (2)
8 */**GNTF3		Grease Nipple (2)	23	AM040	Cutter Belt Tension Spring (2)
9	NHM20X1.5T	Front Wheel Nut (2)	24	AM145	Weight Compensating Spring
	W203806	Front Wheel Spacer (2)	25	AM304	Front Axle Conn Link Adjuster
10	AM256	Tie Rod (2)	26	SH0516C	Front Axle Conn Link Adjuster Bolt (2)
13	AM020	Tie Rod End (2)	27	W051216	Conn Link Adjuster Washer (2)
14	N06F	Tie Rod End Lock Nut (4)	28	B0624C	Front Axle Conn Link Adj Pivot Bolt
15	B0620C	Tie Rod End Bolt (4)	29	N05CN	Front Axle Conn Link Adj. Nut (2)
16	N06CN	Tie Rod End Bolt Nut (4)	30	AM337	Inner Tie Rod End (2)
17	AM341	F/Axle Conn Link NLA USE KIT188	31	B0624C	Inner Tie Rod Bolt (2)
18	SH0616C	Connecting Link Bolt (3)			
19	N06CN	Connecting Link Bolt Nut (4)			
			*	SKIT89	Stub Axle Left Hand
			**	SKIT90	Stub Axle Right Hand



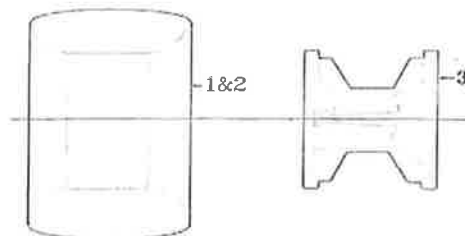
STOCKMAN 09C95 & 43H95 GROUP 17: FRONT WHEEL COMPONENTS

Ref No.	Part No.	Description
1	TT500x6	Front Wheel Tyre & Tube (2)
2	STU500X6	Front Wheel Tube (2)
3	AM07099C	Front Wheel Hub Cap (2)
4	BB204212N	Bearing (4)
5	AM021	Bearing Spacer (2)
6	AM193M9	Wheel Hub (2)
7	W203806	Front Wheel Spacer (2)



STOCKMAN 09C95 & 43H95 GROUP 18: REAR WHEEL COMPONENTS

Ref No.	Part No.	Description
1	TT650x8	Rear Wheel Tyre & Tube (2)
2	STU650X8	Rear Wheel Tube (2)
3	AM194	Wheel Hub (2)



STOCKMAN 09C95 & 43H95 GROUP 19: DRIVE COMPONENTS

Ref No.	Part No.	Description
1	AM018	Drive Chain Incl Link
*	231901	Drive Chain Incl Link (H.D.)
2	SAM019	Connecting Link
	S231904	Connecting Link (H.D.)
3	AM362	Chain Tensioner (2) 43H95
	SAM245	Chain Tensioner (2) 09C95 NLA
4	SH0516C	Retaining Bolt (2) 43H95
	AM275	Spacer (2) 09C95
5	PIFBB126598A	Bearing
6	N06CN	Retainer Nut (2) 43H95
	N06CN	Retainer Nut (4) 09C95
7	W061216	Ret. Nut Washer (2) 43H95
	W061216	Ret. Nut Washer (6) 09C95
7a	W051216	Ret. Bolt Washer (2) 43H95
8	AM288	Chain Tens. Spring 43H95
	AM180	Chain Tens. Spring 09C95
9	SAM071E95	Intershaft
10	SAM022	Intershaft Nut
11	SKIT30	Intershaft Sprocket & Key
*	SKIT65	Intershaft Sprocket & Key
12	SK03	Intershaft Sprocket Key
13	BB25SAN	Intershaft Bearing (2)
14	AM024	Intershaft Brng Flange (4)
15	SH0612C	Bearing Flange Bolt (6)

Fixed Chain Adjuster

SAM347	Chain Tensioner NLA
N05CN	Tensioner Nut
W050816	Tensioner Washer
PIFBB126598A	Bearing
SH0612C	Retaining Bolt (3)
W061216	Retainer Washer (3)
WS06081.5	Retainer S/P Washer (3)

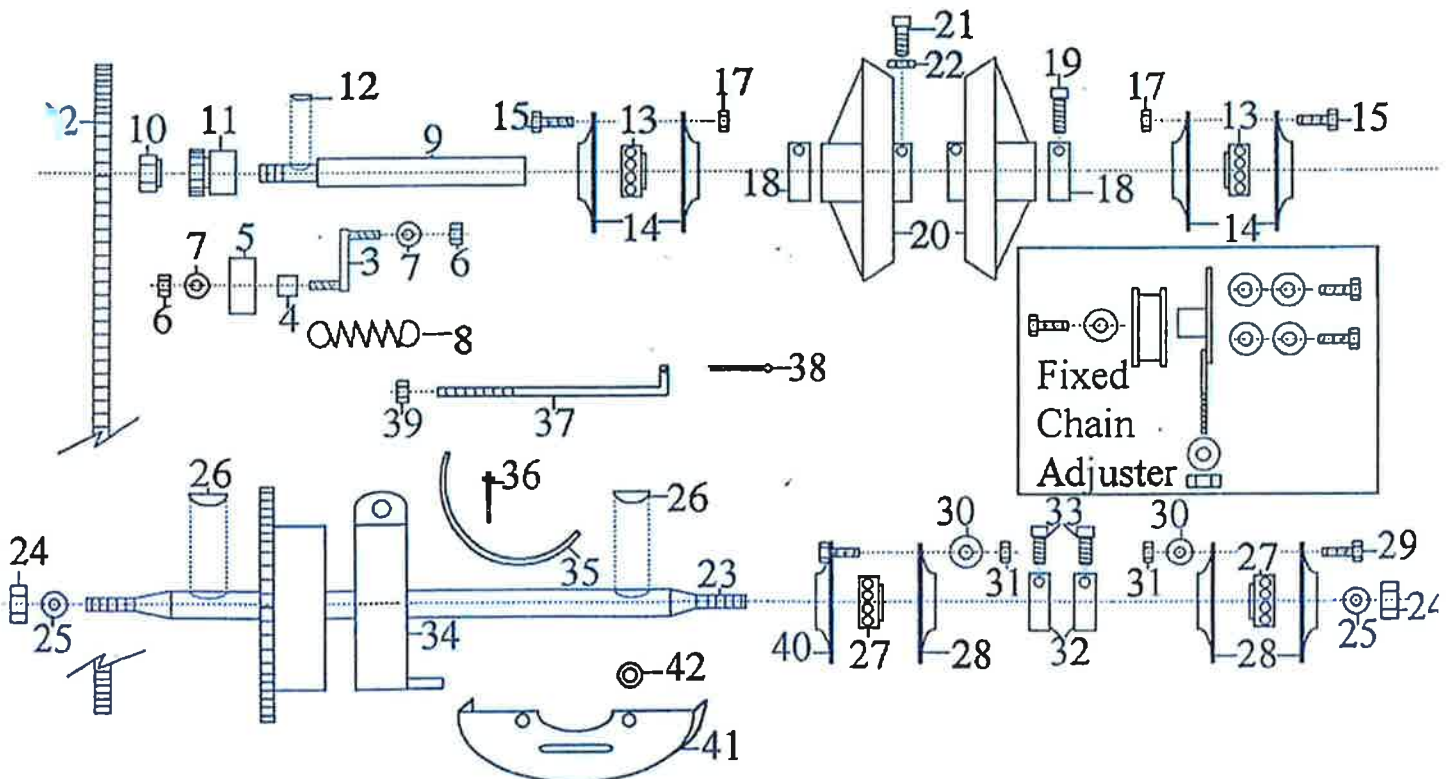
Ref No.	Part No.	Description
17	N06CN	Brng Flange Bolt Nut (6)
18	AM025	Intershaft Lock Collar (2)
19	GS0505C	Lock Collar Set Screw (2)
20	AM197	Clutch Plate (2)
21	SS0612W	Clutch Plate Set Screw Set (4)
23	SAM198	Rear Axle NLA USE SKIT119
*	23190308J	Rear Axle (Heavy Duty)
24	N10F	Rear Axle Nut (2)
25	W102016	Rear Axle Washer (2)
26	K18	Rear Axle Key (2)
27	BB25SAN	Rear Axle Bearing (2)
28	AM024	Rear Axle Brng Flange (3)
29	SH0616C	Bearing Flange Bolt (3)
30	W061216	Bearing Flange Washer (3)
31	N06CN	Bearing Flange Nut (6)
32	AM025	Rear Axle Lock Collar (2)
33	GS0505C	Lock Collar Set Screw (2)
34	KIT16	Drum Brake Incl Lining
35	AM200	Brake Band Lining
36	PR0205	Brake Lining Rivet (4)
37	AM266	Drum Brake Rod
38	CP3-220	Drum Brake Rod Split Pin
39	N05CN	Drum Brake Rod Nut
	W051216	Brake Drum Washer
40	AM202	Rear Axle Brng Flange LH
41	AM203	Chain Guard (Opt)
42	W061216	Guard Washer (2) (Opt)

SKIT6898A

Chain Adj Duel Brg Kit 09C95

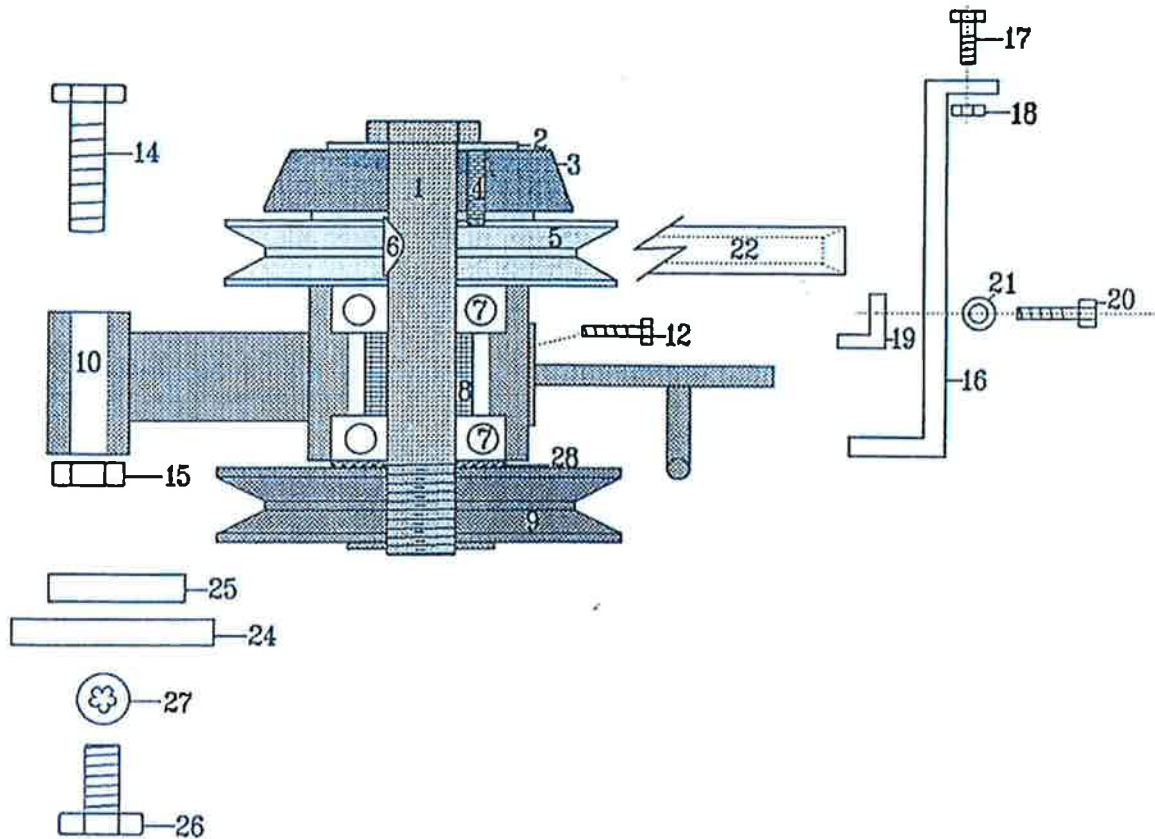
* SKIT119
SKIT120

Sprockets & Chain (H\ Duty)
Intershaft Kit



STOCKMAN 09C95 & 43H95 GROUP 20: CLUTCH ARM & COMPONENTS

Ref No.	Part No.	Description
1	AM204J3	Clutch Shaft Incl Nut
2	W204305	Clutch Cone Ret. Washer
3	KIT187	Clutch Cone
4	PDM0630	Clutch Cone Pin
5	AM326	Clutch Pulley Upper
6	SK09	Clutch Pulley Key
7	BB205215NS	Clutch Bearing (2)
8	AM072	Clutch Bearing Spacer
9	252001	Clutch Pulley Lower 43H95
	AM205	Clutch Pulley Lower 09C95
10	AM207	Clutch Arm c/w Yoke
12	SH0512C	Clutch Arm Yoke Ret. Bolt (2)
14	B0652C	Clutch Arm Pivot Bolt
15	N06CN	Clutch Arm Pivot Bolt Nut
16	AM206	Clutch Arm Locating Bracket
17	SH0412C	Clutch Arm Locating Bracket Bolt (2)
18	N04CN	Clutch Arm Locating Bracket Bolt Nut (2)
19	AM246	Clutch Arm Bracket Wear Plate
20	SH0512C	Clutch Arm Bracket Wear Plate Bolt (2)
21	W051216	Clutch Arm Brkt Wear Plate Washer (2)
	W05S	Wear Plate S/P Washer (2)
22	V16	Belt - Engine to Clutch
24	AM208	Clutch Adjusting Plate
25	AM209	Clutch Adjusting Tapped Plate (2)
26	SH0616C	Adjusting Plate Bolt (2)
27	W06S	Bolt Lock Washer (2)
28	W203902	Clutch Pulley Bearing Washer



STOCKMAN 09C95 & 43H95 GROUP 21: 28" MOWING ATTACHMENT COMPONENTS

Ref No.	Part No.	Description	Ref No.	Part No.	Description
1	SKIT123	C/Housing c/w Guard & Bushes	25	W203902	Pulley Ret. Washer
	AM230	Cutter Housing Bush (2)	26	NHM20x1.5T	Pulley Ret. Nut
2 ***	AM259	Deflector		WM20S	Pulley Ret.S/P Washer
***	AM272	Deflector Spring	27	KIT15	Cutter Brake Incl. Pad
3 ***	AM273	Deflector Rod	28	AM033I95	Cutter Brake Pad
4 ***	AM274	Deflector Ratchet Plate	29	PR0205	Brake Pad Pop Rivet (2)
5 ***	AM052E1	Deflector Bracket	30	B0520C	Cutter Brake Pivot Bolt
6 ***	SH0412C	Deflector Bracket Bolt (2)	31	N05CN	Cutter Brake Pivot Bolt Nut
7 ***	N04CN	Deflector Bracket Nut (2)	32	AM07604A	Cutter Disc
***	W041216	Deflector Brkt Washer (2)	33	SH0612C	Cutter Disc Ret. Bolt (4)
11	AM036D9	Cutter Housing Roller	34	N06CN	Cutter Disc Ret. Bolt Nut (4)
12	AM037	Cutter Roller Shaft	35	SMB150S	Cutter Blade - Stepped
13	CP3-225	Roller Shaft Split Pin		SMB150A	Blade - Air Flow (opt)
14	SKIT08	Bearing Housing c/w Guides	36	WM20S	Pulley Ret. S/P Washer
15	AM073	Belt Guides (2)	37	SKIT01D1	Blade Bolt & Nut Set
16	B0420C	Belt Guide Bolt (2)	43	V13	Belt - Cutter to Clutch
17	N04CN	Belt Guide Bolt Nut (2)	45	AM220	Cutter Front Guard
18	B0620C	Bearing Housing Bolt (4)	46	W051216	Cutter Guard Washer (3)
19	NF06CN	Bearing Hsng Bolt Nut (4)	47	N05CN	Cutter Guard Ret. Nut (3)
20	13181	Cutter Shaft			
21	SK09	Cutter Shaft Key	***	SKIT66	Deflector Kit
22	BB205215N	Cutter Shaft Bearing (2)		SKIT32N	Blade, Bolt, Nut - Stepped
23	AM029	Bearing Spacer		SKIT33N	Blade, Bolt, Nut - Air Flow
24	AM030	Cutter Shaft Pulley			

