

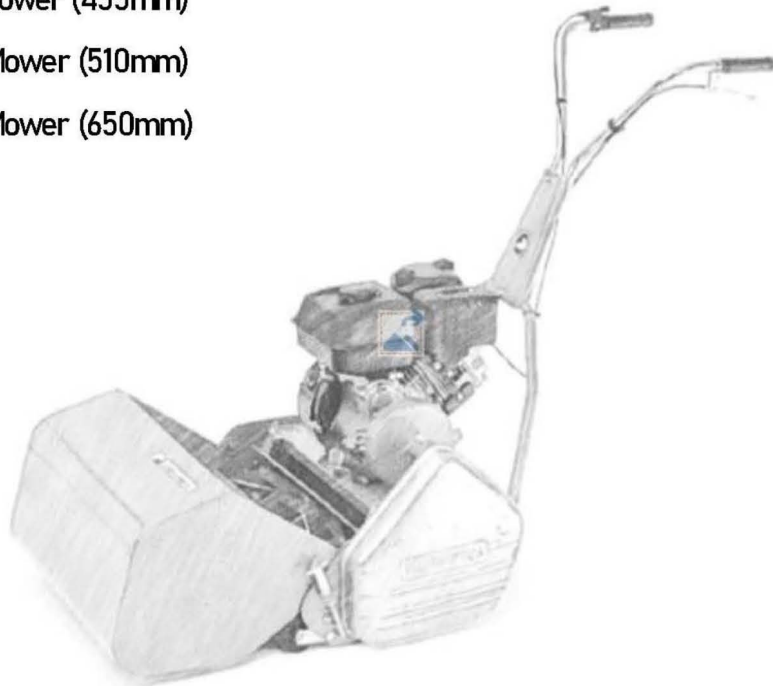
COX

 **professional**[™]
Produced in South-Africa **built for life**

CYLINDER MOWER—PETROL



- 14" Cylinder Mower (355mm)
- 17" Cylinder Mower (455mm)
- 20" Cylinder Mower (510mm)
- 25" Cylinder Mower (650mm)



#BuiltForLife



built for life

WELCOME & THANK YOU

We thank you for purchasing a COX Professional™ Cylinder Mower, which we trust will give you trouble free operation for many years to come.

Very similar to COX Industries, Professional™ Mowers in South Africa have been proudly producing Cylinder mowers for over 50 years with their craftsmen taking pride in engineering beautiful machines that are built for life. Each part is precision engineered to create a perfectly balanced mower that produces manicured lawns, time after time. That's why we are justifiably proud of importing, distributing and marketing these quality mowers.

To ensure your Professional mower remains in optimal condition, our nationwide authorised COX Dealers have the skills, equipment and spare parts to properly maintain your lawn care investments. Our countrywide network means that no matter where you are, you are in reach of a COX Professional™ Dealer.

Please read through this Owner's Manual before operating your new mower. It provides detailed information on making sure you get the most from your Cylinder unit.

Your grass cutting will be easier, achieving excellent results.

Happy, enjoyable mowing



We've Earned Our Stripes










COX



built for life

SAFETY INFORMATION

Warning! Read these instructions carefully, be familiar with the controls and the proper use of the lawnmower. Learn how to **STOP** the lawnmower quickly in an **EMERGENCY**.

* Never allow children or people unfamiliar with these instructions to use the lawnmower.	* Never mow while people, especially children or pets, are nearby
* Keep in mind that the operator or user is responsible for accidents or hazards occurring to other people or their property	* Thoroughly inspect the area where the lawnmower is to be used and remove all objects that can damage the cutting cylinder
* Wear appropriate protective clothing and equipment when you are operating the lawnmower. Do not mow barefoot.	* Store Fuel in containers specifically designed for this purpose. Refuel outdoors only and do not smoke while refuelling.
* Add fuel before starting the engine. Never remove the cap of the fuel tank or add petrol whilst the engine is running or hot.	* Do not operate the engine in a confined space where dangerous carbon monoxide fumes can collect.
* Before using, always visually inspect to see that all blades, blade bolts and cutter assembly are not worn or damaged.	* Mow only in daylight or in good artificial light
* Do not operate lawnmower in wet grass as this may void your warranty	* Mowing on banks can be dangerous. Mow across the face of slopes—never up and down. Be careful of your footing on slopes.
* Stop the blades if the lawnmower has to be lifted for transportation when crossing surfaces other than grass.	* Do not tilt the lawnmower when starting or switching on the mower, except if the lawnmower has to be tilted for starting in long grass.
* Never operate the lawnmower with defective guards, or without the safety devices i.e. deflectors, grass catches etc.	* Do not change the engine governor settings or overspeed the engine. Operating an engine at excessive speed may increase personal injury.
* Start the engine or switch on the motor carefully according to instructions and with feet well away from the blade(s).	* Never pick up or carry a lawnmower while the engine is running.
Do not put hands or feet near, or under, rotating parts while the lawnmower is being operated.	* Replace worn or damaged blades and bolts in sets to preserve balance
* Never store the lawnmower with petrol in the tank inside a building where fumes may reach open flame or spark	* Allow the engine to cool before storing in any enclosure
 * Walk—never run when mowing 	* Use extreme caution when reversing or pulling the mower towards you
<p style="text-align: center;">STOP THE ENGINE</p> <ul style="list-style-type: none"> * Whenever you leave the machine <ul style="list-style-type: none"> * Before refuelling * Before clearing blockages * Before making height or cut adjustment * If the lawnmower starts to vibrate abnormally <p>* After striking a foreign object—Inspect the damage and make repairs</p>	 General Hazard and Safety alert  Read Instruction Manual  Beware of thrown or flying objects to bystanders  Sharp blade(s). Beware of severing toes or fingers  Remove spark plug lead before maintenance
* Do not put hands or feet near or under rotating parts. Keep clear of the discharge opening at all times	* Keep this operating and maintenance manual in a safe place for reference at a later date

COX



built for life

PRODUCT SPECIFICATIONS

14" Cutting Cylinder		
Blades	6	9
Chassis Type	Steel	Steel
Cutting Width	355mm	355mm
Height Adjustment	Central Lever 5–30mm	Central Lever 5–35mm
Chassis Thickness	3.5mm	3.5mm
Grass Cather Capacity	30L	30L
Recommended Lawn Size	Small	Small

17" Cutting Cylinder		
Blades	6	9
Chassis Type	Steel	Steel
Cutting Width	435 mm	435 mm
Height Adjustment	Central Lever 5–30mm	Central Lever 5–30mm
Chassis Thickness	3.5mm	3.5mm
Grass Cather Capacity	35L	35L
Recommended Lawn Size	Medium	Medium

20" Cutting Cylinder			
Blades	6	9	12
Chassis Type	Steel	Steel	Steel
Cutting Width	510mm	510mm	510mm
Height Adjustment	Central Lever 5–30mm	Central Lever 5–30mm	Central Lever 5–35mm
Chassis Thickness	3.5mm	3.5mm	3.5mm
Grass Cather Capacity	40L	40L	40L
Recommended Lawn Size	Large	Large	Large

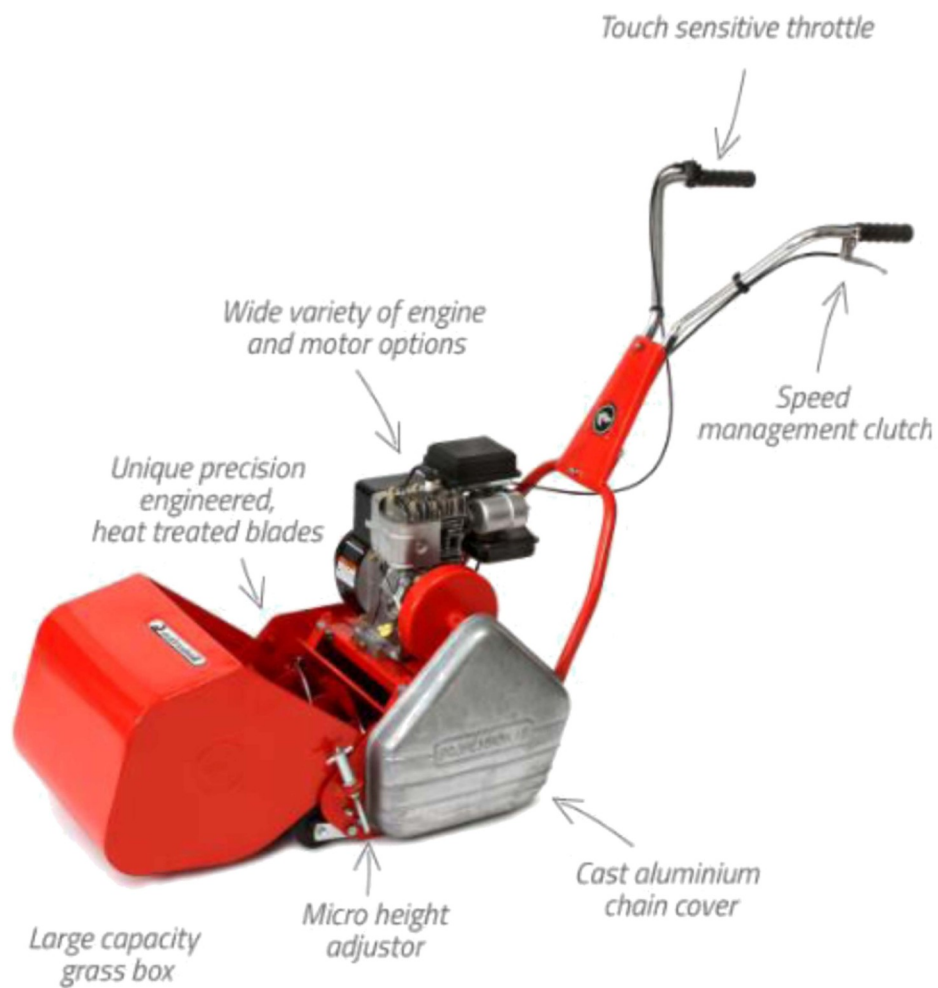
25" Cutting Cylinder			
Blades	6	9	12
Chassis Type	Steel	Steel	Steel
Cutting Width	630mm	630mm	630mm
Height Adjustment	Central Lever 5–30mm	Central Lever 5–30mm	Central Lever 5–30mm
Chassis Thickness	3.5mm	3.5mm	3.5mm
Grass Cather Capacity	50L	50L	50L
Recommended Lawn Size	X-Large	X-Large	X-Large





built for life

PERFECT LAWN—*TIME AFTER TIME*



We've Earned Our Stipes



COX



built for life

REEL CUT

Precision mowing for a professional finish.



NORMAL CUT

Grass tips hacked off in normal conditions.



Nothing beats a cylinder mower for that clean, smooth look of a well-kept sports field

The Professional™ range of cylinder mowers has a number of built-in features to ensure that you get a perfect cut every time. Their vulcanised rear rollers are ribbed to ensure excellent grip without damaging your lawn and mounted heavy-duty precision ball bearings for low maintenance and ease of use. A micro height adjuster gives you complete control over the length of the grass, while the cutting cylinder is purpose-designed to direct cuttings into the centre of the catcher to prevent fouling. The cast aluminium chain cover keeps dirt away from the drive assembly for less maintenance and longer life.



Large capacity steel grass catcher.

Fitting the Grass Catcher

Hold the grass catcher with both hands and hook it on to the 2 protruding steel shafts on the chassis. Make sure they hooks are not bent and that they fit snugly over the 2 shafts. Always **ENSURE** the lawnmower is switched off when fitting the grass catcher.

COX



built for life

GENERAL USE—TECHNICAL INFORMATION



Precision-engineered drive assembly: the heart of our self-propelled mowers.

Adjustment of Cutter Chain tension

Self-adjusting. If excessively loose remove a link from the chain.

These chains are adjusted by loosening two nuts located on the inter sprocket plate with slotted adjusting holes, behind intermediate sprocket, and moving the intermediate sprocket upwards. This will tighten both chains simultaneously. Some slackness should be felt in chains after fastening nuts, so as to avoid snapping the chains during operation.

Lubrication of Chains

Light axle grease should be applied to chains every 10–15 hours



Ribbed rollers for grip in slippery conditions.

Adjustment of Clutch Cable

To increase clutch operating pressure, release the lock nut and turn the threaded adjuster outwards a few times. Refasten lock nut. This is necessary only if clutch slip with loss of propulsion should occur.



Heat-treated blades for strength and durability.

COX



built for life

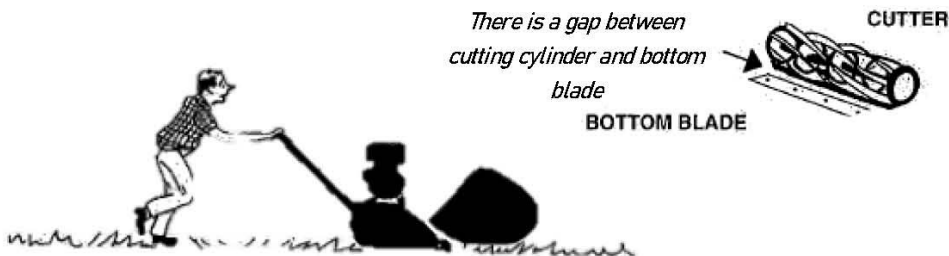
TROUBLESHOOTING

1. Ragged, uneven cutting caused by cutting cylinder setting

If your mower is giving a ragged, uneven cut, it does not necessarily mean that the blades need sharpening.

In most instances it simply means that the cutting cylinder needs re-adjusting.

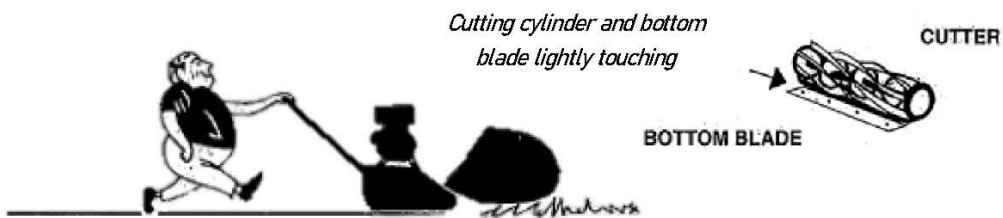
With use, the cutting cylinder and bottom blade gradually wear away from each other, causing the grass to be dragged through and not cut cleanly. The blades maintain a better edge as long as they are correctly aligned.



The action of a Professional™ reel type mower produces a scissor-like cut and therefore the cutting cylinder adjustment is very important to the finished appearance of the lawn.

2. Smooth, even cutting affected by correct cutter setting

From time to time, depending on frequency of use and conditions of your lawn area, your mower will require adjustment of the cutting cylinder. You will benefit significantly by becoming familiar with the simple procedure required to maintain optimal cutting efficiency.



3. The front roller has nothing to do with the adjustment of the cutting cylinder

It merely serves as the adjustment for HEIGHT of cut, allowing the cutting cylinder to pass across the grass at the desired height.

COX



built for life

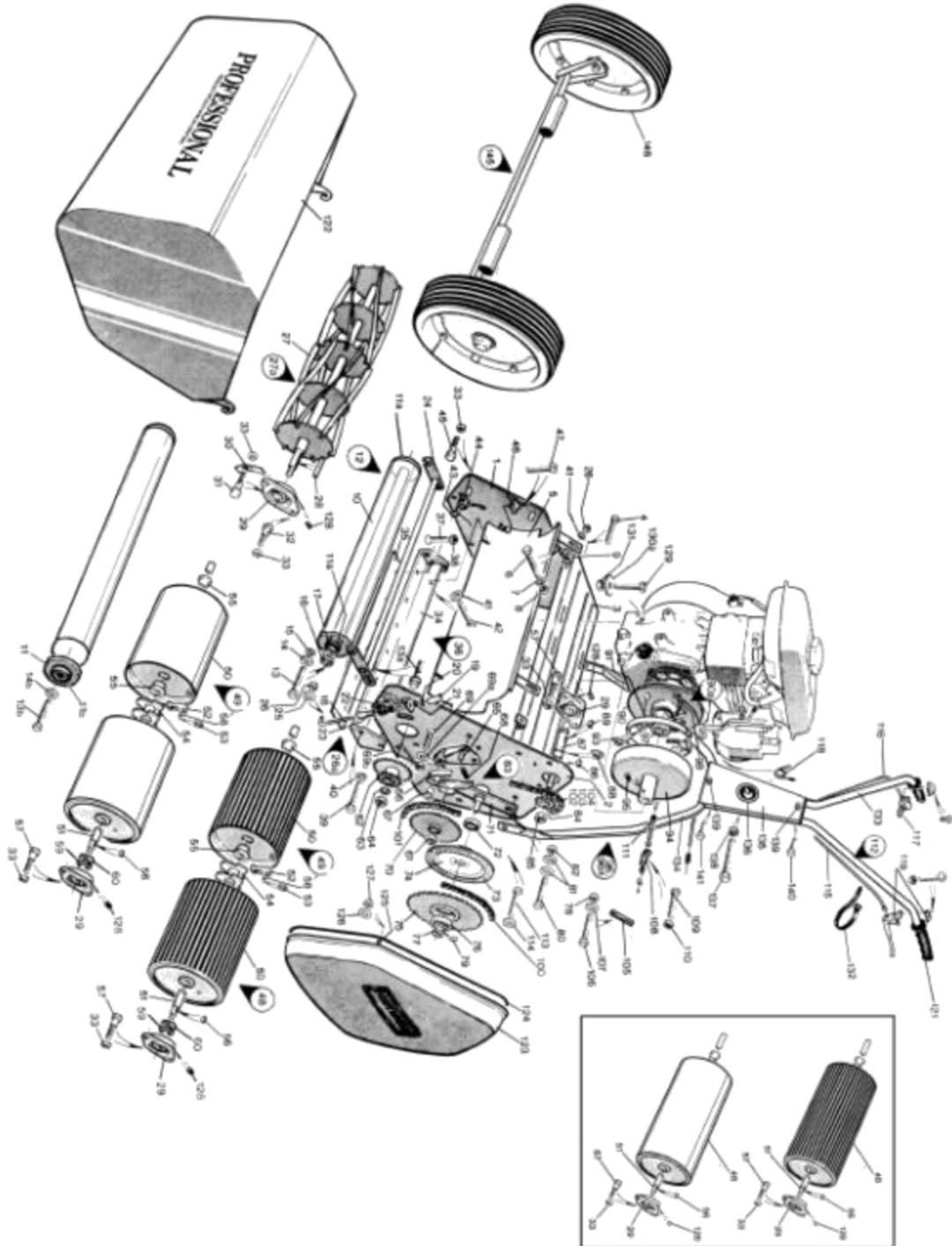
TROUBLESHOOTING

PROBLEM / SYMPTOM	POSSIBLE CAUSE / REMEDY
Mower leaves a ragged finish	Cause: Cylinder not correctly adjusted. Remedy: Adjust the cylinder Cause: Cutting blades blunt Remedy: Contact Professional™ dealer to sharpen blades
Engine will not start	Cause: Engine may be flooded Remedy: Leave for 10–15 minutes Cause: Spark plug lead not connected Remedy: Reconnect Cause: No oil Remedy: Add sufficient oil
Engine does not stop	Throttle cable not correctly adjusted. Stop engine by removing the spark plug and repair throttle cable. Or; Kill switch on engine might be dirty. Remove and clean the switch.
Cutting cylinder does not rotate	Cause: Incorrect adjustment Remedy: Contact your local dealer
Land drive (rear rollers) does not engage	Cause: Incorrect adjustment / cable damaged Remedy: Incorrect adjustment or the throttle cable might be damaged.
Cutting cylinder cuts higher on the one side and lower at the other side	The sole plate is not level and needs to be replaced. Contact your closest COX Professional™ dealer for support.
Poor collection of grass	Cause: Mowing in wet conditions Remedy: Allow to dry Cause: Deflector plate too high Remedy: Adjust deflector plate to top setting
Excessive vibration / noise	Cause: Blade(s) or/and cylinder bearing damaged or coupling unbalanced Remedy: Contact your local dealer

COX



built for life



COX



built for life

ITEM	PART No:	DESCRIPTION
1	P112	PLATE, SIDE RH
1	P112 GG	PLATE, SIDE RH GG
2	P111 GG	PLATE, SIDE LH GG
2	P111 P	PLATE, SIDE LH RETROL
3	P109-14P	PLATFORM, ENGINE 14 INCH
3	P109-17P	PLATFORM, ENGINE 17 INCH
3	P109-20P	PLATFORM, ENGINE 20 INCH
3	P109-20P GG	PLATFORM, ENGINE 20 INCH GG
3	P109-25P	PLATFORM, ENGINE 25 INCH
3	P109-25P GG	PLATFORM, ENGINE 25 INCH GG
4	P007	BOLT, HEX HEAD - 0800020
5	P022-14	PLATE, DEFLECTOR 14 INCH
5	P022-17	PLATE, DEFLECTOR 17 INCH
5	P022-20	PLATE, DEFLECTOR 20 INCH
5	P022-20 GG	PLATE, DEFLECTOR 20 INCH GG
5	P022-25	PLATE, DEFLECTOR 25 INCH
5	P022-25 GG	PLATE, DEFLECTOR 25 INCH GG
6	P014	BOLT, HEX HEAD - 0600012
7	P025	WASHER, SPRING - 0600000
8	P026	NUT, HEX - 0600000
9	P023	BRACKET, DEFLECTOR PLATE
10	P012-14 SA	ROLLER, FRONT 14 INCH+END CAPS
10	P012-17 SA	ROLLER, FRONT 17 INCH+END CAPS
10	P012-20 SA	ROLLER, FRONT 20 INCH+END CAPS
10	P012-25 SA	ROLLER, FRONT 25 INCH+END CAPS
11	P013-14	SHAFT, FRONT ROLLER 14 INCH
11	P013-17	SHAFT, FRONT ROLLER 17 INCH
11	P013-20	SHAFT, FRONT ROLLER 20 INCH
11	P013-20GG	SHAFT, FRONT ROLLER 20 INCH
11	P013-25	SHAFT, FRONT ROLLER 25 INCH
11	P013-25GG	SHAFT, FRONT ROLLER 25 INCH
11a	P015	CAP, END PLASTIC
11a	P015 CAP GG	CAP, END GG
11b	P015 BRG GG	BRG, FRONT ROLLER GG
12	P021-14 SA	ROLLER, FRONT 14 INCH COMP
12	P021-17 SA	ROLLER, FRONT 17 INCH COMP
12	P021-20 SA	ROLLER, FRONT 20 INCH COMP
12	P021-20GG SA	ROLLER, FRONT 20 INCH GG COMP
12	P021-25 SA	ROLLER, FRONT 25 INCH COMP
12	P021-25GG SA	ROLLER, FRONT 25 INCH GG COMP
13	P007	BOLT, HEX HEAD - 0800020
13a	P021 BOLT	SHOULDER, BOLT
13b	P021 GG	SCREW, CSK SOCKET - 0800016
14	P010	WASHER, FLAT - 0801217
14b	P016 GG	WASHER, DOME GG
15	P006	WASHER, LOCK - 0800000
16	P018	SEAL, DUST
17	P016	SHIM, SHAFT
18	P092	BRACKET, FRONT ROLLER ADJ
19	P086	HANDLE, FRONT ROLLER ADJ
20	P089	NUT, FRONT ROLLER ADJ
21	P088	WASHER, FRONT ROLLER ADJ
22	P087	SPRING, FRONT ROLLER ADJ
23	P090	SLEEVE, FRONT ROLLER ADJ
24	P009-14	SHAFT, F/ROLLER ADJ 14 INCH
24	P009-17	SHAFT, F/ROLLER ADJ 17 INCH
24	P009-20	SHAFT, F/ROLLER ADJ 20 INCH
24	P009-25	SHAFT, F/ROLLER ADJ 25 INCH
25	P010	WASHER, FLAT - 0801217
26	P011	NUT, NYLOC - 0600000
26a	P094 SA	ADJUSTER, HEIGHT COMPLETE
27	P001-14-6	CYLINDER, CUTTING 14 INCH
27	P001-14-9	CYLINDER, CUTTING 14 INCH
27	P001-17-6	CYLINDER, CUTTING 17 INCH
27	P001-17-9	CYLINDER, CUTTING 17 INCH
27	P001-20-6	CYLINDER, CUTTING 20 INCH
27	P001-20-9	CYLINDER, CUTTING 20 INCH
27	P001-20-12	CYLINDER, CUTTING 20 INCH
27	P001-25-6	CYLINDER, CUTTING 25 INCH
27	P001-25-9	CYLINDER, CUTTING 25 INCH
27	P001-25-12	CYLINDER, CUTTING 25 INCH
27a	P001-14-6 SA	CYLINDER, CUTTING 14 INCH
27a	P001-17-6 SA	CYLINDER, CUTTING 17 INCH
27a	P001-17-9 SA	CYLINDER, CUTTING 17 INCH
27a	P001-20-12 SA	CYLINDER, CUTTING 20 INCH
27a	P001-20-6 SA	CYLINDER, CUTTING 20 INCH
27a	P001-20-9 SA	CYLINDER, CUTTING 20 INCH
27a	P001-25-12 SA	CYLINDER, CUTTING 25 INCH
27a	P001-25-6 SA	CYLINDER, CUTTING 25 INCH
27a	P001-25-9 SA	CYLINDER, CUTTING 25 INCH
28	P041	KEY, STRAIGHT
29	P027 STD	BRG, CYLINDER STD
29a	P027 NG	NIPPLE, GREASE - 0600000
30	P093	COVER, DUST
31	P117	BOLT, CUTTER
32	P118 BOLT	BOLT, PIVOT
33	P118	NUT, NYLOC - 0800000
34	P003-14	PLATE, SOLE 14 INCH
34	P003-17	PLATE, SOLE 17 INCH
34	P003-17GG	PLATE, SOLE 17 INCH LOW CUT
34	P003-20	PLATE, SOLE 20 INCH
34	P003-20GG	PLATE, SOLE 20 INCH LOW CUT
34	P003-25	PLATE, SOLE 25 INCH
34	P003-25GG	PLATE, SOLE 25 INCH LOW CUT
35	P002-14	BLADE, BOTTOM 14 INCH
35	P002-14 LC	BLADE, BOTTOM 14 INCH LOW CUT

COX



built for life

ITEM	PART No:	DESCRIPTION
35	P000-17	BLADE, BOTTOM 17 INCH
35	P000-17 LC	BLADE, BOTTOM 17 INCH LOW CUT
35	P000-20	BLADE, BOTTOM 20 INCH
35	P000-20 LC	BLADE, BOTTOM 20 INCH LOW CUT
35	P000-25	BLADE, BOTTOM 25 INCH
35	P000-25 LC	BLADE, BOTTOM 25 INCH LOW CUT
36	P008-14 SA	PLATE, SOLE 14 INCH COMP
36	P008-17 SA	PLATE, SOLE 17 INCH COMP
36	P008-17GG SA	PLATE, SOLE 17 INCH GG COMP
36	P008-20 SA	PLATE, SOLE 20 INCH COMP
36	P008-20GG SA	PLATE, SOLE 20 INCH GG COMP
36	P008-25 SA	PLATE, SOLE 25 INCH COMP
36	P008-25GG SA	PLATE, SOLE 25 INCH GG COMP
37	P004	SCREW, CSK - 0800020
38	P005	NUT, HEX - 0800000
39	P007	BOLT, HEX HEAD - 0800020
40	P006	WASHER, LOCK - 0800000
41	P008	WASHER, FLAT - 0602020
42	P034	BOLT, HEX HEAD - 0600012
43	P134 LH	SPRING, CUTTER RETURN LH
43	P134 RH	SPRING, CUTTER RETURN RH
44	P113	RUBBER, GRASS/ROCK SUPPORT
45	P115	BOLT, SPRING CUTTER RETURN
46	P120	NYLOC, CUTTER ADJUSTING
47	P139	SCREW, PAN HEAD - 0800040
47	P139 GG	SCREW, ALL EN BUT/CAP-0800040GG
48	P028-14 SA	L/ROLL, 14 INCH COMP
48	P028-17 SA	L/ROLL, 17 INCH COMP
48	P028-17GG SA	L/ROLL, 17 INCH GG COMP
48	P028-20 SA	L/ROLL, 20 INCH COMP
48	P028-20GG SA	L/ROLL, 20 INCH GG COMP
48	P028-25 SA	L/ROLL, 25 INCH COMP
48	P028-25GG SA	L/ROLL, 25 INCH GG COMP
49	P028-14 COMP SA	L/ROLL, 14 INCH COMP+BRGS
49	P028-17 COMP SA	L/ROLL, 17 INCH COMP+BRGS
49	P028-17GG SA, CO	L/ROLL, 17 INCH GG COMP+BRGS
49	P028-20 COMP SA	L/ROLL, 20 INCH COMP+BRGS
49	P028-20GG SA, CO	L/ROLL, 20 INCH GG COMP+BRGS
49	P028-25 COMP SA	L/ROLL, 25 INCH COMP+BRGS
49	P028-25GG SA, CO	L/ROLL, 25 INCH GG COMP+BRGS
50	P028-17 SA LH	L/ROLL, 17 INCH HALF LH+PAWL
50	P028-17 SA RH	L/ROLL, 17 INCH HALF R H+PAWL
50	P028-17GG SA LH	L/ROLL, 17 INCH HALF GG LH
50	P028-17GG SA RH	L/ROLL, 17 INCH HALF GG RH
50	P028-20 SA LH	L/ROLL, 20 INCH HALF LH+PAWL
50	P028-20 SA RH	L/ROLL, 20 INCH HALF R H+PAWL
50	P028-20GG SA LH	L/ROLL, 20 INCH HALF GG LH
50	P028-20GG SA RH	L/ROLL, 20 INCH HALF GG RH
50	P028-25 SA LH	L/ROLL, 25 INCH HALF LH+PAWL
50	P028-25 SA RH	L/ROLL, 25 INCH HALF R H+PAWL
50	P028-25GG SA LH	L/ROLL, 25 INCH HALF GG LH
50	P028-25GG SA RH	L/ROLL, 25 INCH HALF GG RH
50a	P028 SCRA, 14	SCRAPPER, L/ROLL 14 INCH
50a	P028 SCRA, 17	SCRAPPER, L/ROLL 17 INCH
50a	P028 SCRA, 20	SCRAPPER, L/ROLL 20 INCH GG
50a	P028 SCRA, 25	SCRAPPER, L/ROLL 25 INCH GG
51	P029-17	SHAFT, L/ROLL 17 INCH
51	P029-20	SHAFT, L/ROLL 20 INCH
51	P029-25	SHAFT, L/ROLL 25 INCH
52	P032	PAWL, L/ROLL
53	P033	RETAINER, L/ROLL
54	P031	BATCHET, L/ROLL
55	P036	BUSH, WHEEL R BAR
56	P037	KEY, W/O ODRUUFF 3/16
57	P135	BOLT, BRG
58	P037	KEY, W/O ODRUUFF 3/16
59	P034	E-CLIP L/R SHAFT - 1500000
60	P035-2.0	WASHER, FLAT - 192.038
61	P038	NUT, NYLOC - 1200000
62	P074P	SPROCKET, CUTTER PETROL
63	P076	WASHER, FLAT - 1201624
64	P038	NUT, NYLOC - 1200000
65	P077 BRCKT	BRACKET, CHAIN TENSIONER
66	P077	TENSIONER, CHAIN
67	P078	BUSH, CHAIN TENSIONER
68	P079	SPRING, CHAIN TENSIONER
69	P080	SCREW, CSK - 0800040
69a	P068	WASHER, FLAT - 0802019
69b	P138	NUT, NYLOC - 0800000
70	P072	SPROCKET, DRUM 30 TOOTH
71	P064	BRACKET, INTER SPROCKET
72	P069	BRG, CLUTCH PLATE SMALL
73	P061	CLUTCH, L/ROLL CORK FACING
74	P062	PLATE, CLUTCH
75	P060	SPROCKET, CLUTCH 39 TOOTH
76	P099	BRG, INTER SPROCKET
77	P057	SLEEVE, CLUTCH
78	P011	NUT, NYLOC - 0600000
79	P058	PIN, RIVET
80	P066	BOLT, HEX HEAD - 0800025
81	P068	WASHER, FLAT - 0802019
82	P138	NUT, NYLOC - 0800000
83	P081 SA	KIT, CHAIN TENSIONER
84	P070-12	SPROCKET, ENGINE 12 TOOTH
85	P038	NUT, NYLOC - 1200000
86	P037	KEY, W/O ODRUUFF 3/16





built for life

ITEM	PART No:	DESCRIPTION
87	P049-34	SHAFT, CLUTCH DRIVE
87	P049-17-20	SHAFT, CLUTCH DRIVE
87	P049-25	SHAFT, CLUTCH DRIVE
88	P034	E-CLIP, L/R SHAFT - 1500000
89	P037	KEY, WOODRUFF 3/16
90	P039-GG	PLATE, CLUTCH BACK GG
90	P039-3/4	PLATE, CLUTCH BACK 3/4 INCH
90	P039-5/8	PLATE, CLUTCH BACK 5/8 INCH
90a	P039 COMP	PLATE, CLUTCH BACK 3/4+SHOES
90a	P039 GG COMP	PLATE, CLUTCH BACK GG+SHOES
91	P043	SHOE, CLUTCH
92	P045	SPRING, CLUTCH SHOE
93	P044	E-CLIP, CLUTCH SHOE - 1200000
94	P046-GG	DRUM, CLUTCH GG
94	P046-3/4	DRUM, CLUTCH 3/4 INCH
94	P046-5/8	DRUM, CLUTCH 5/8 INCH
95	P040	SCREW, GRUB - 0800008
96		
97	P042	BRG, CLUTCH
98	P041	KEY, STRAIGHT
99	P040	SCREW, GRUB - 0800008
100	P084	C HAIN, CLUTTER 60 PITCH
101	P085	C HAIN, DRUM 38 PITCH
102	P082	C HAIN, DRIVE 79 PITCH
103	P083-3/8 MASTER	LINK, MASTER
103	P084-1/2 MASTER	LINK, MASTER
104	P083-3/8 HALF	LINK, HALF
104	P084-1/2 HALF	LINK, HALF
105	P095	LEVER, ENGAGING CLUTCH DRUM
106	P056	BOLT, HEX HEAD - 0600080
107	P008	WASHER, FLAT - 0602020
108	P096	B RACKET, DRUM CLUTCH
109	P097	BOLT, HEX HEAD - 0800016
110	P118	NUT, NYLOC - 0800000
111	P099	PIECE, CABLE DISTANCE
112	P106-14P	HANDLE, COMPLETE 14 INCH
112	P106-17P	HANDLE, COMPLETE 17 INCH
112	P106-20GG	HANDLE, COMPLETE 20 INCH GG
112	P106-20P	HANDLE, COMPLETE 20 INCH
112	P106-25GG	HANDLE, COMPLETE 25 INCH GG
112	P106-25P	HANDLE, COMPLETE 25 INCH
113	P007	BOLT, HEX HEAD - 0800020
114	P010	WASHER, FLAT - 0801217
115	P100P	CABLE, CLUTCH PETROL
116	P102 PROF	CABLE, THROTTLE
116	P102 ROVER	CABLE, THROTTLE+LEVER ROVER
117	P103	LEVER, THROTTLE
117	P103 SCRW	SCREW, SELF TAPER #600016
118	P104 RS	SPRING, THROTTLE CABLE RETURN
118	P104 HON	SPRING, THROTTLE CABLE RETURN
118	P104 YAM	SPRING, THROTTLE CABLE RETURN
119	P101	LEVER, CLUTCH
121	P105	GRIP, HANDLE
122	P121-34	GRASS BOX 14 INCH
122	P121-17	GRASS BOX 17 INCH
122	P121-20	GRASS BOX 20 INCH
122	P121-20GG	GRASS BOX 20 INCH GG
122	P121-25	GRASS BOX 25 INCH
122	P121-25GG	GRASS BOX 25 INCH GG
123	P051	COVER, CHAIN
123	P051 GG	COVER, CHAIN GG
124	P052	SEAL, CHAIN COVER
125	P054	STUD, CHAIN COVER
126	P053	WASHER, FLAT - 0601213
127	P011	NUT, NYLOC - 0600000
128	P040	SCREW, GRUB - 0800008
129	HV048-850	BOLT, HEX HEAD - 0800050
130	P068	WASHER, FLAT - 0802019
130a	P010	WASHER, FLAT - 0801217
131	P005	NUT, HEX - 0800000
132	P125	STRAP, CABLE
133	P106 UP PETROL	HANDLE, UPPER PETROL
134	P106-14 LOW	HANDLE, LOWER 14 INCH
134	P106-17 LOW	HANDLE, LOWER 17 INCH
134	P106-20 LOW	HANDLE, LOWER 20 INCH
134	P106-20GG LOW	HANDLE, LOWER 20 INCH GG
134	P106-25 LOW	HANDLE, LOWER 25 INCH
134	P106-25GG LOW	HANDLE, LOWER 25 INCH GG
135	P106 LOGO GG SA	LOGO, PLATE GG PACKED
135	P106 LOGO SA	LOGO, PLATE PACKED
136	LABEL- DOMED DEC	LABEL- DOMED DECAL ROUND
137	P106 BOLT	BOLT, HANDLE SWIVEL - 1000115
138	HV044	NUT, NYLOC - 1000000
139	P106 ND	NUT, DOME - 0800000
140	P097	BOLT, HEX HEAD - 0800016
141	HV048-835	BOLT, HEX HEAD - 0800035
142	P221	C LAMP, CLUTCH CABLE SINGLE
144	P028 BAR SET	BAR, SETTING GG
145	P304-17	TRANSPORTER, 17 INCH
145	P304-20	TRANSPORTER, 20 INCH
145	P304-25	TRANSPORTER, 25 INCH
146	SC021 GG	WHEEL, REAR GG COMPLETE



built for life

Your Guarantee

COX Professional™ Lawnmowers have a 4-year warranty from date of the original purchase. The warranty covers manufacturer's defects in workmanship and/or materials under normal use and service. Professional™ agrees to repair or replace (at their discretion) without charge to the purchaser any part or parts proven to defective within the warranty period.

Warranty Agreements for petrol powered lawnmowers are covered in the separate booklet supplied by the engine manufacturer and are handles by their appointed Service Agents.

This warranty will not apply to units which have been subjected to abuse, negligence, accidents, or have been repaired or modified other than by approved **COX** Professional™ Service Dealer.

Use of spurious (pirate) parts of any nature invalidates the warranty. Warranty **MUST** be established and confirmed documentary proof of purchase. An invoice or till receipt from the retailer is the only acceptable form of proof of purchase.

PERMISSABLE UNDER WARRANTY

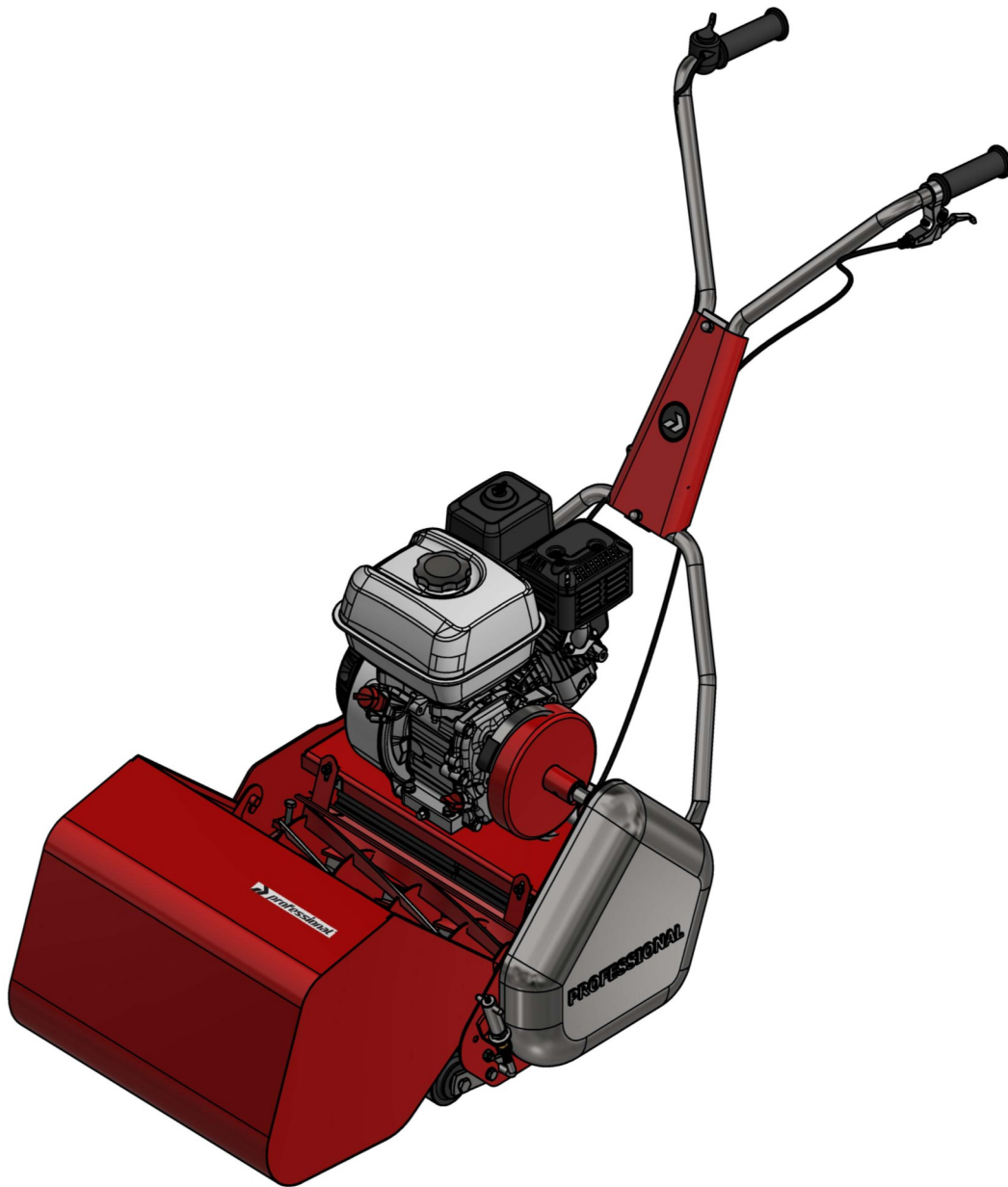
1. Any mower or engine part found to be defective
2. Any damage caused by faulty workmanship to the lawnmower
3. Any genuine part which does not fit
4. Any damage to the lawnmower as a result of one or more of the above factors

NOT ACCEPTABLE UNDER WARRANTY

Service Agents **MUST** obtain payment from the customer for damage caused by any of the following:

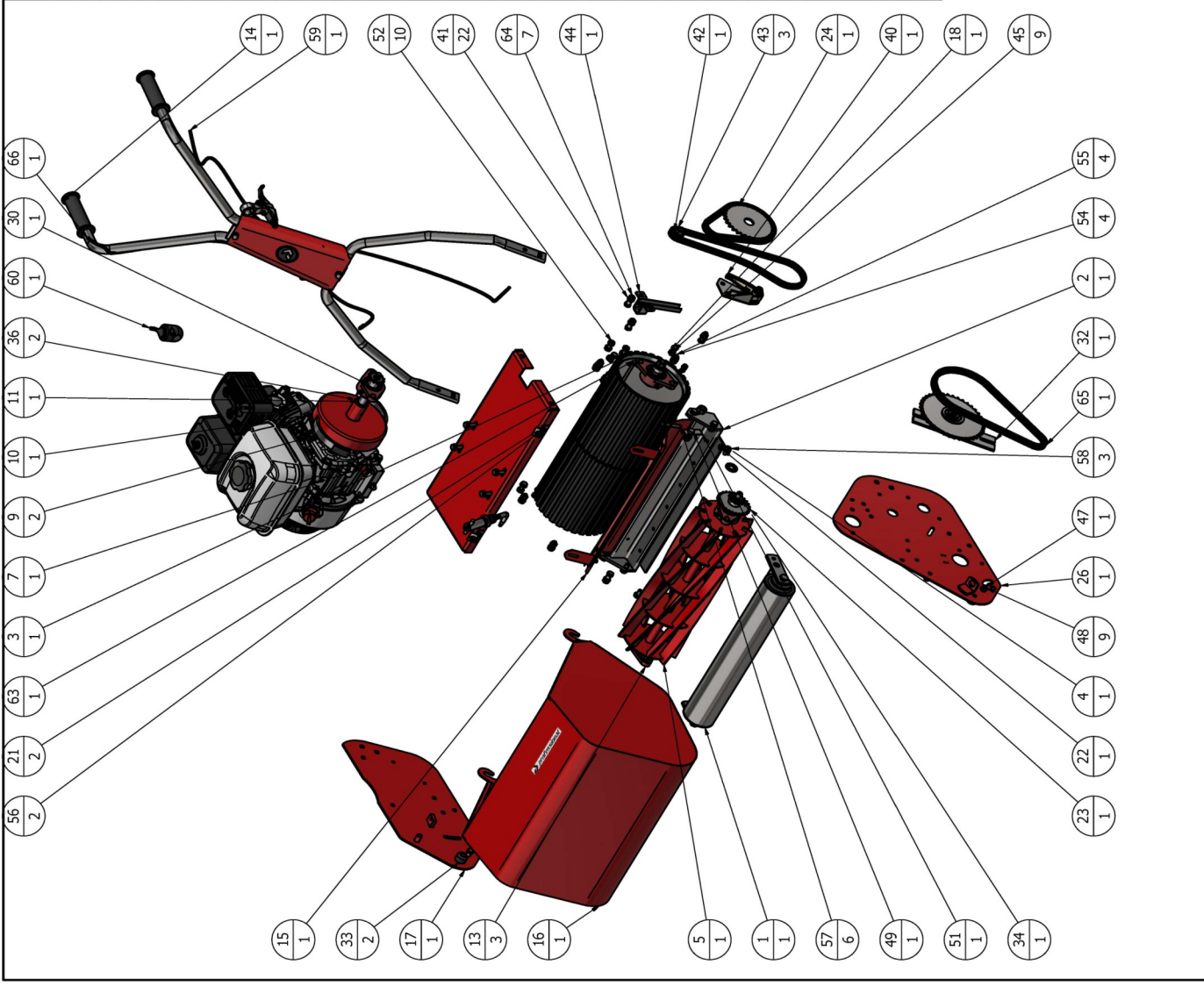
1. Insufficient and/or dirty oil
2. 2-Stroke engines incorrect fuel/oil mixture
3. 4-Stroke engines which has been operated on banks and/or slopes more than 30°
4. Engine operated without or with a dirty air filter or with an air filter that is not serviced regularly as instructed.
5. Failure to keep electric motor / engine air passage clean thus interfering with cooling.
6. Dirt in fuel tank or carburettor. Tuning or resetting of carburettor.
7. Cleaning and replacing of spark plugs, magneto points and electronic ignition.
8. Replacing of starting springs and ropes.
9. Damaged electric cables
10. Damaged caused by loose, worn or unbalanced cutting blade(s) or blade assembly (bent blades, unbalanced blades etc)
11. Bent crankshafts and failure to keep ALL bolts and nuts tightened.
12. Chain and V-belt adjustments and greasing on cylinder mowers
13. Motors of electric lawnmower opened by anyone other than the manufacturer or authorised Service Dealer
14. Damaged to the motors/engines of lawnmowers due to use of blade other than approved by the manufacturer.
15. Damage due to non-genuine parts used.
16. The cost of fuels, oils etc. used in repairs
17. Repairs undertaken by unauthorised dealers
18. Normal wear and tear
19. Water damage and exposure to chemicals.
20. No responsibility will be taken for any damage occasioned by operating any product marketed by Professional™ contrary to any instructions contained in the manufacturers service manual. The manufacturer reserves the right to alter product specifications without giving prior notice.
21. Engine overfilled with oil that prevents the machine from starting or running smoothly. Refer to engine instruction manual for corrective action.
22. Damage due to lack of owner and/or user maintenance
23. Damage in transit
24. Negligence, misuse and/or abuse
25. Damage to overheating or fire
26. Extension cables fitted with specifications that are inadequate for the amperage load. Use of inappropriate extension cables.





**Illustrated Parts List
For
17" Cylinder Mower**

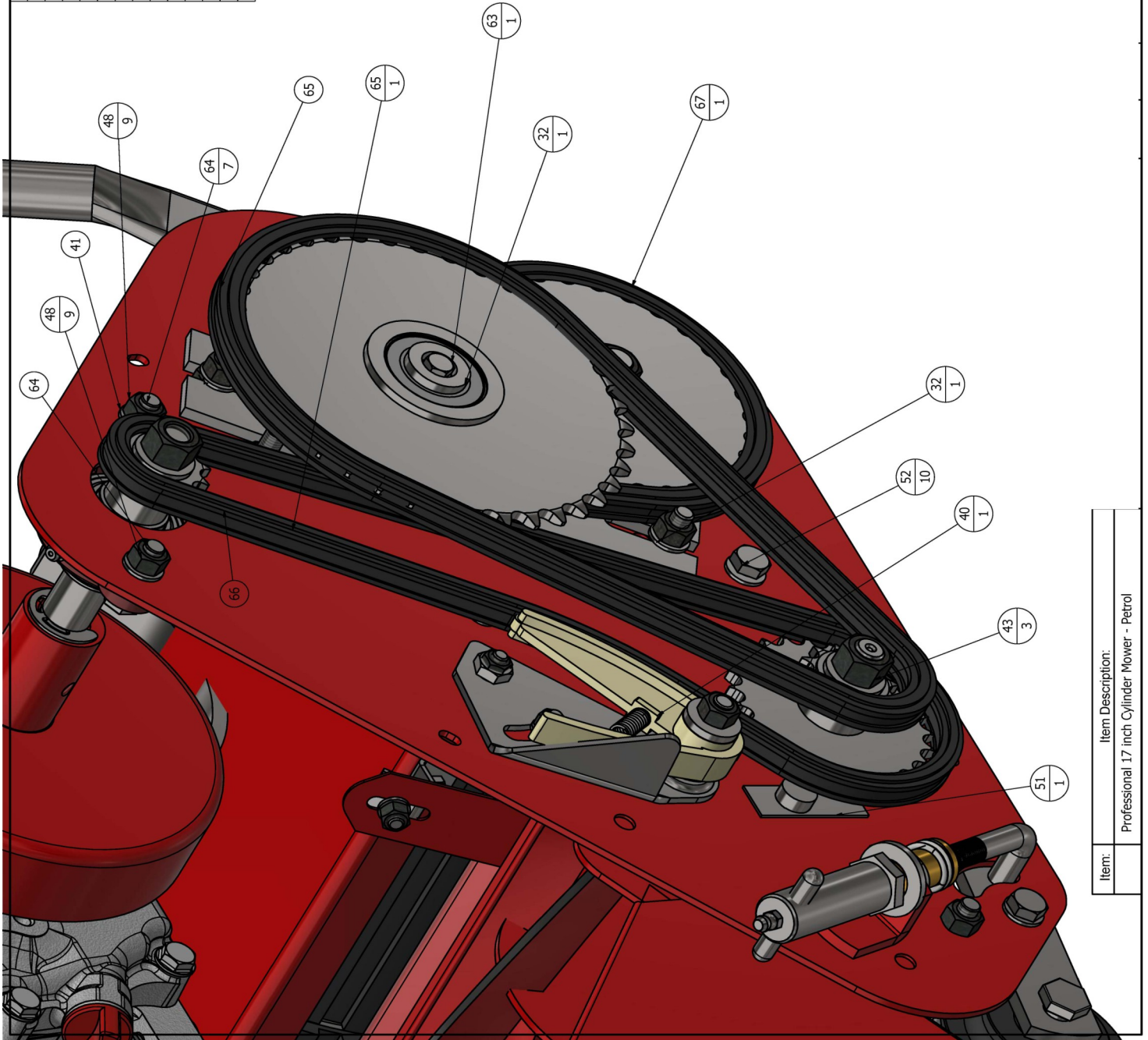
PARTS LIST				
ITEM	QTY	PART NUMBER	DESCRIPTION	
1	1	P021-17-SA	Roller Assembly Complete	
2	1	P003-17	Plater, Sole 17"	
3	1	P028-17-SA	P028-17-SA	
4	1	P002-17	Blade, Bottom 17"	
5	1	P001-17-9	Cutting Cylinder 17" - 9 Blade	
8	1	P039	Plate Clutch Back	
9	2	P043	Shoe Clutch	
10	1	P046	Drum Clutch	
11	1	P049-17-20	Drive Shaft 17" and 20"	
13	3	P027 STD	BRG, CYLINDER STD	
14	1	P106-17-ST	Handle 17" Standard	
15	1	P022-17	Plater, Deflector	
16	1	P121-17	Grass Catcher 17"	
17	1	P112	PLATE, SIDE RH"	
18	1	P109-17-P	Platform, Engine Mounting 17"	
21	2	P023A	bracket, Deflector Plate	
22	1	Front Roller Adjuster	Front Roller Adjuster	
23	1	P074	Sprocket Cutter	
24	1	P072	Sprocket Drum 30 Teeth	
26	1	P111	PLATE, SIDE LH PETROL	
30	1	P070-12	SPROCKET, ENGINE 12 TOOTH PET	
31	2	P030	Key, Ratchet	
32	1	Clutch Assembly	See Page 4	
33	2	P113	Rubber, Grass Box Support	
34	1	P076	Flat Washer - 1201624	
35	1	P051 SA	COVER, CHAIN STD COMPLETE	
36	2	P034	E-CLIP, L/R SHAFT - 1500000	
65	1	P084	CHAIN, CUTTER 60 PITCH	
40	1	Chain Tensioner	See Page 6	
41	22	P008	WASHER, FLAT - 6X20-2MM	
42	1	P076	WASHER, FLAT - 1201624	
43	3	P038	NUT, NYLOC - 1200000	
44	1	Clutch Cable Mechanism	Refer to Page 14	
45	9	P008	WASHER, FLAT - 6X20-2MM	
47	1	P116	BOLT, BRG	
48	9	P118	NUT, NYLOC - 0800000	
49	1	P117	Bearing Cutter Bolt	
64	7	P118 BOLT	BOLT, PIVOT	
51	1	P093	COVER, DUST	
52	10	P097	BOLT, HEX HEAD - 0800016	
56	2	P014	BOLT, HEX HEAD - M6X12	
57	6	P0119	SCREW, CHEESE HEAD 0800040	
58	3	P097	BOLT, HEX HEAD - 0800016	
59	1	P100p	CABLE, CLUTCH PETROL	
60	1	P103 SA,	THROTTLE LEVER ASSY	
66	1	P082	CHAIN, DRIVE 79 PITCH	



Item: Professional 17 inch Cylinder Mower - Petrol

17" Cylinder Mower

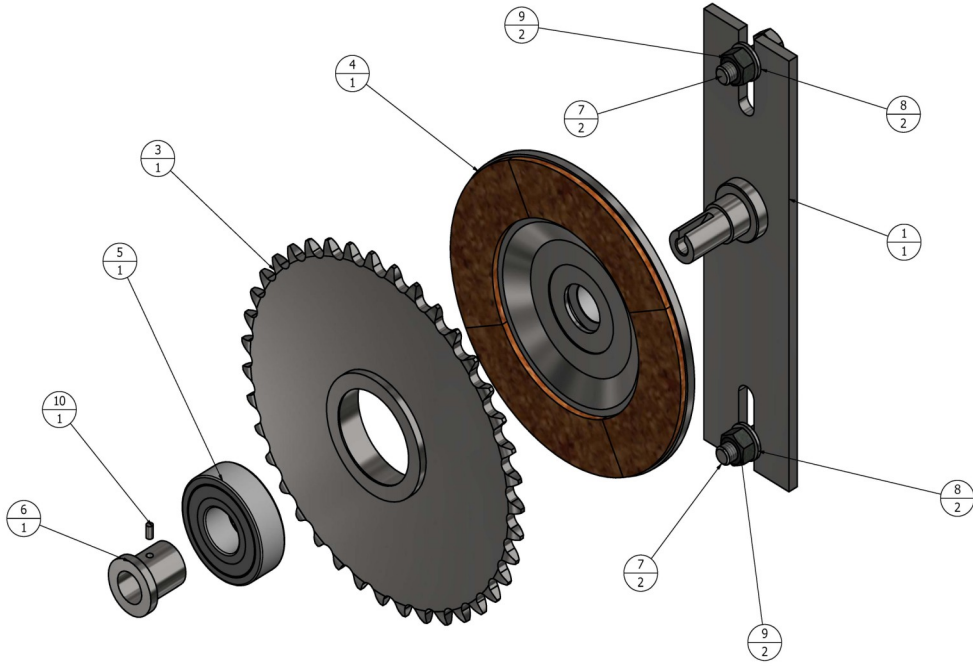
PARTS LIST			
ITEM	QTY	PART NUMBER	DESCRIPTION
32	1	Clutch Assembly	See Page 4
65	1	P084	CHAIN, CUTTER 60 PITCH
40	1	Chain Tensioner	See Page 6
41	22	P008	WASHER, FLAT - 6X20-2MM
43	3	P038	NUT, NYLOC - 1200000
48	9	P118	NUT, NYLOC - 0800000
64	7	P118 BOLT	BOLT, PIVOT
51	1	P093	COVER, DUST
52	10	P097	BOLT, HEX HEAD - 0800016
66	1	P082	CHAIN, DRIVE 79 PITCH
67	1	P085	CHAIN, DRUM 38 PITCH
63	1	P056	BOLT, HEX HEAD - 0600080



Item:	Item Description:
	Professional 17 inch Cylinder Mower - Petrol

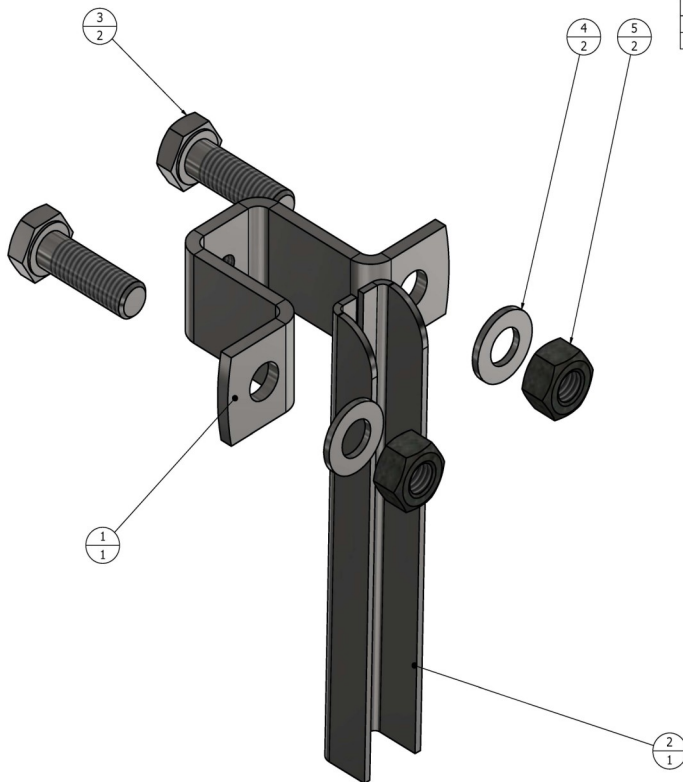
17" Cylinder Mower

PARTS LIST			
ITEM	QTY	PART NUMBER	DESCRIPTION
1	1	P064	Bracket Inter Sprocket
2	1	P063	BRG, Clutch Plate Small
3	1	P060	Sleeve Clutch
4	1	P062	Plate, Clutch
5	1	P059	BRG, Inter Sprocket
6	1	P057	Sleeve, Clutch
7	2	P066	BOLT, HEX HEAD - 0800025
8	2	P008	WASHER, FLAT - 6X20-2MM
9	2	P118	NUT, NYLOC - 0800000
10	1	P058	PIN, RIVET



Item:	Item Description:

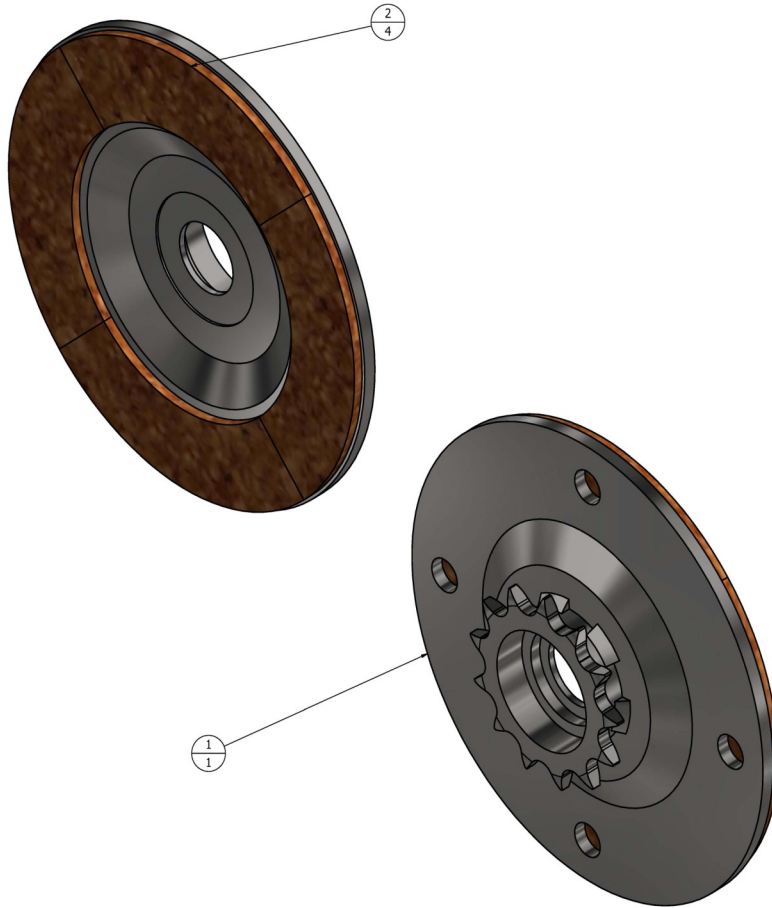
PARTS LIST			
ITEM	QTY	PART NUMBER	DESCRIPTION
1	1	P096	BRACKET, DRUM CLUTCH
2	1	P095	Lever, Engaging - Drum Clutch
3	2	P097	BOLT, HEX HEAD - 0800016
4	2	P008	WASHER, FLAT - 6X20 2MM
5	2	P066	BOLT, HEX HEAD - 0800025



Item:	Item Description:
Clutch Cable	Clutch Cable Mechanism

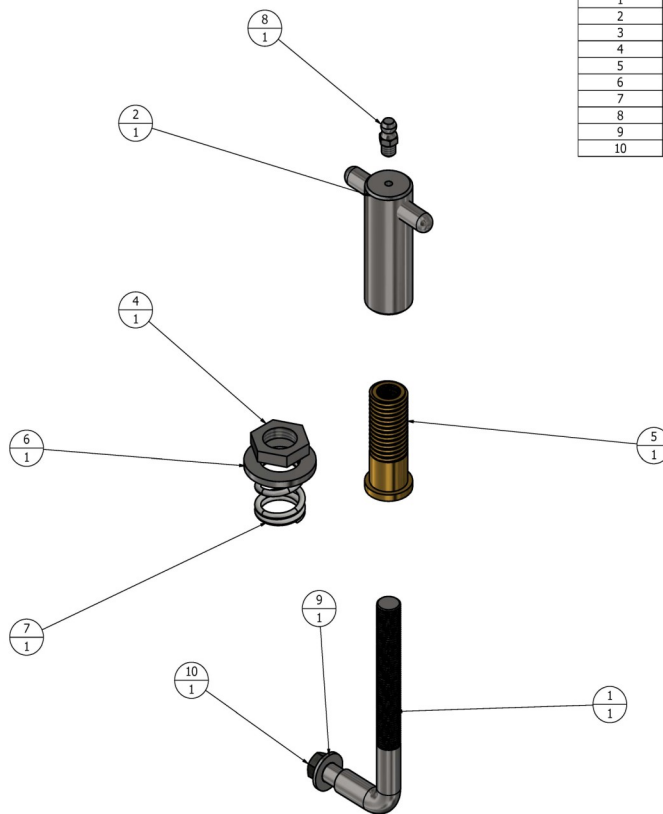
17" Cylinder Mower

PARTS LIST			
ITEM	QTY	PART NUMBER	DESCRIPTION
1	1	P062 SA	PLATE, CLUTCH + BEARING
2	4	P061	Cork Clutch (Pack of 4)



Item:	Item Description:
P062	Plate, Clutch

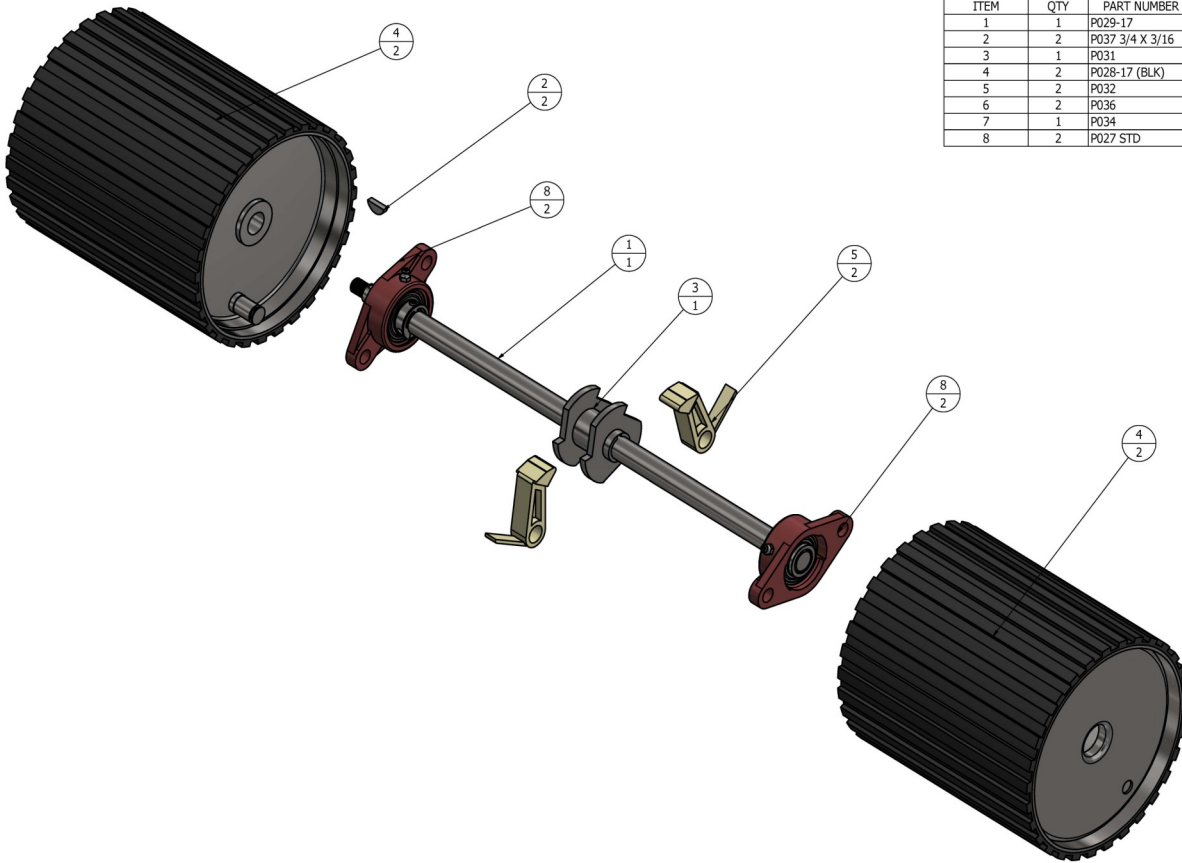
PARTS LIST			
ITEM	QTY	PART NUMBER	DESCRIPTION
1	1	P092	BRACKET, FRONT ROLLER ADJ
2	1	P086	Handle - Front Roller Adjusting
3	1	P086A	T-piece - Front Roller Adjusting
4	1	P089	Front Roller Spring Adjusting Nut
5	1	P090	Sleeve, Front Roller ADJ
6	1	P088	Washer, Front Roller ADJ
7	1	P087	Spring, Front Roller ADJ
8	1	SC051	Grease Nipple
9	1	P010	WASHER, FLAT - 8X12-1.7
10	1	P011	NUT, NYLOC - M6



Item:	Item Description:
	Front Roller Adjuster

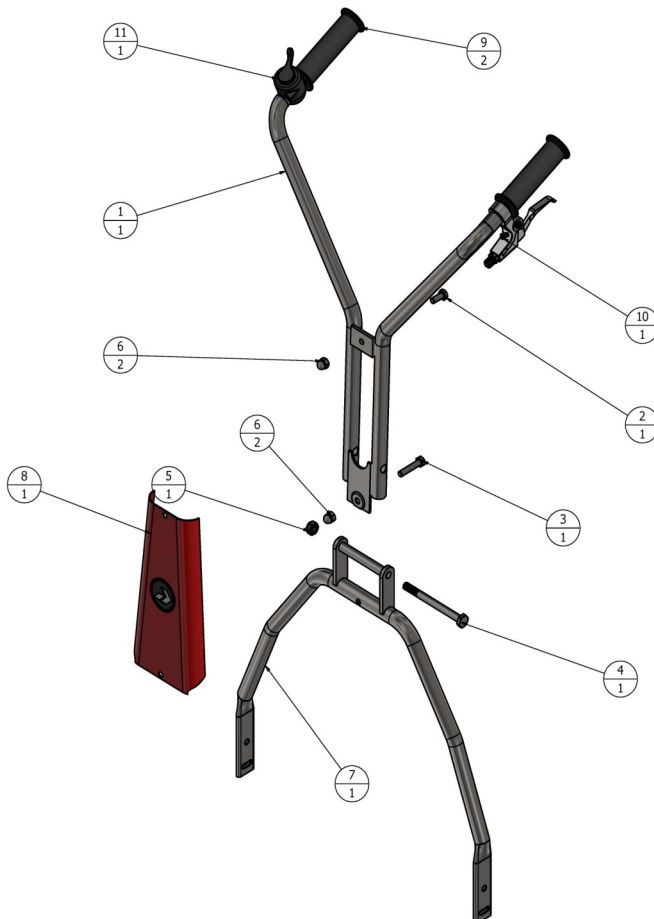
17" Cylinder Mower

PARTS LIST			
ITEM	QTY	PART NUMBER	DESCRIPTION
1	1	P029-17	Land Roll Shaft
2	2	P037 3/4 X 3/16	KEY, WOODRUFF BACKROL SHAFT
3	1	P031	Ratchet Land Roll
4	2	P028-17 (BLK)	Rear Roller Half Section
5	2	P032	Pawl, Land Roll
6	2	P036	Bush Roller Rear
7	1	P034	CirClip, L/R Shaft
8	2	P027 STD	BRG, CYLINDER STD



Item:	Item Description:
P028-17-SA	P028-17-SA

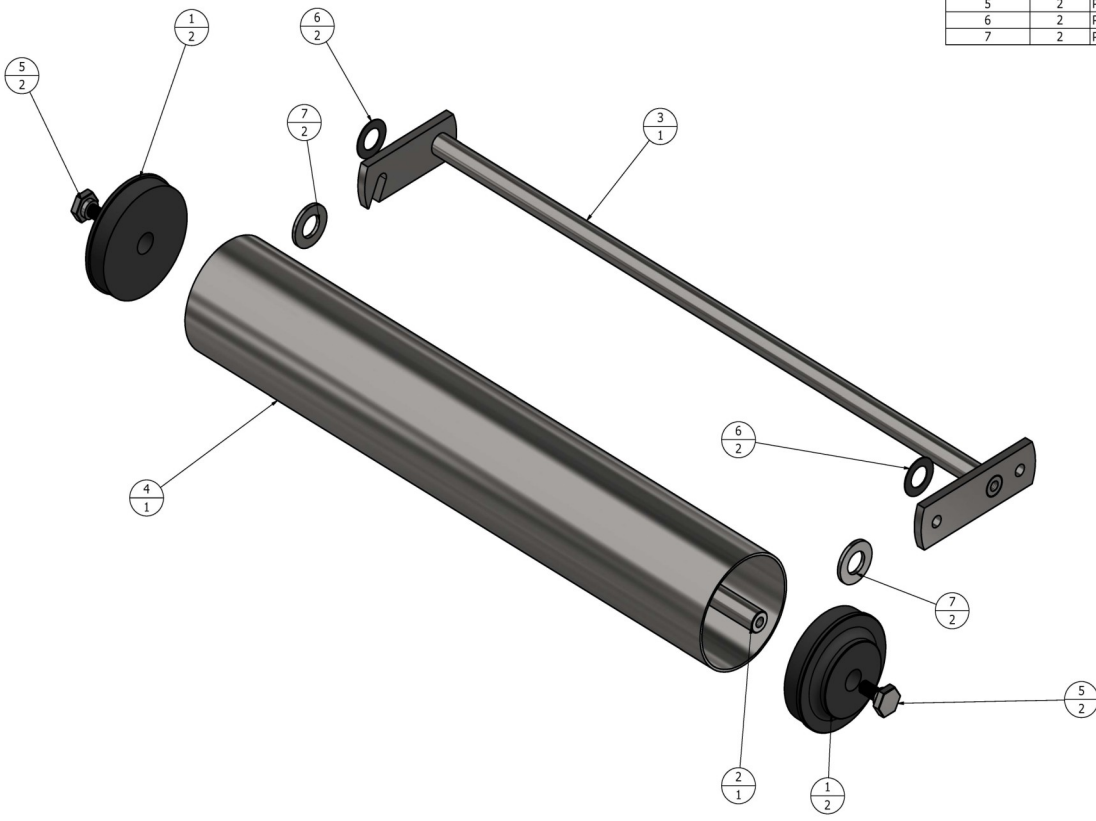
PARTS LIST			
ITEM	QTY	PART NUMBER	DESCRIPTION
1	1	P106-01	Handle Upper Assembly
2	1	P007	BOLT, HEX HEAD - 8X20
3	1	HV048-840	BOLT, HEX HEAD - 0800040
4	1	P106 BOLT	BOLT, HANDLE SWIVEL - 1000115
5	1	Nut-Nyloc-M10	Hex Nut, Product grade C
6	2	P106 ND	NUT, DOME - 0800000
7	1	P106-02-17	Handle Lower Assembly - 17"
8	1	P106-17 Low	Plate Logo
9	2	P105	Grip, Handle
10	1	P101	Clutch Lever
11	1	P103 SA	Throttle Lever



17" Cylinder Mower

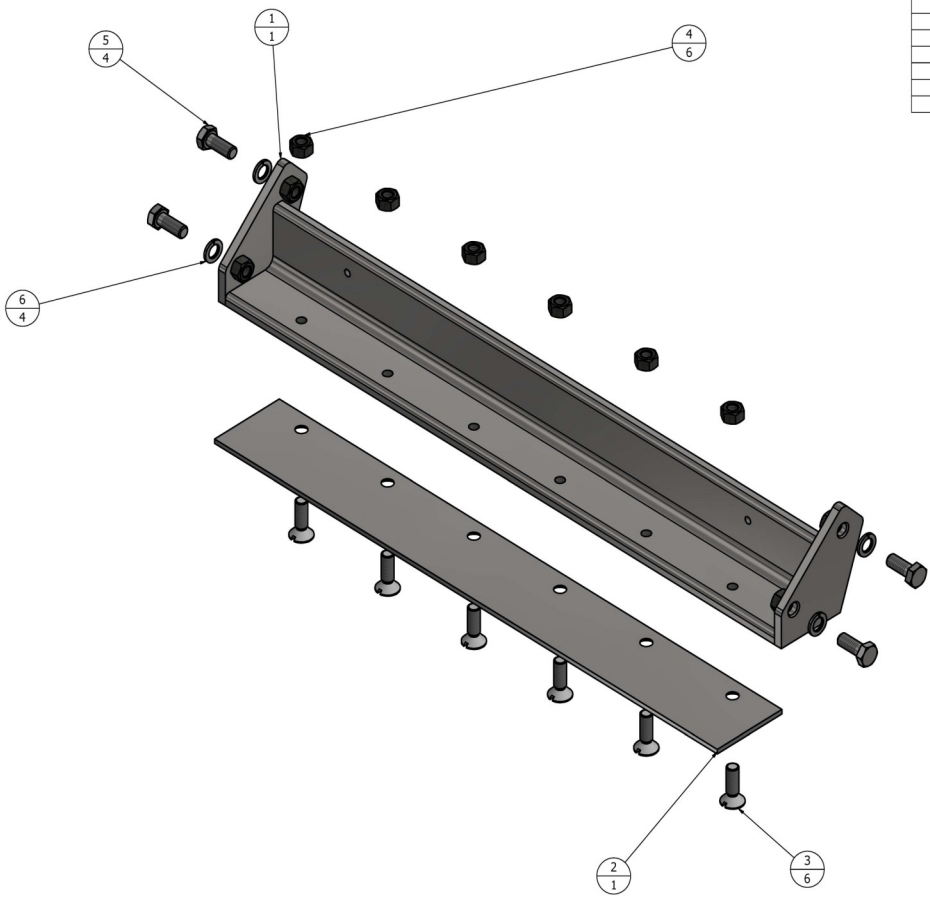
Item:	Item Description:
P106-17-ST -NOT DONE	Handle 17" Standard

PARTS LIST			
ITEM	QTY	PART NUMBER	DESCRIPTION
1	2	P015	End Cap
2	1	P013-17	Shaft Roller Front
3	1	P009-17	Shaft Front Roller Adjusting 17"
4	1	P012-17	Roller, Front
5	2	P007	BOLT, HEX HEAD - 8X20
6	2	P018	SEAL, DUST
7	2	P016	SHIM, SHAFT



Item:	Item Description:
P021-17-S4	Roller Assembly Complete

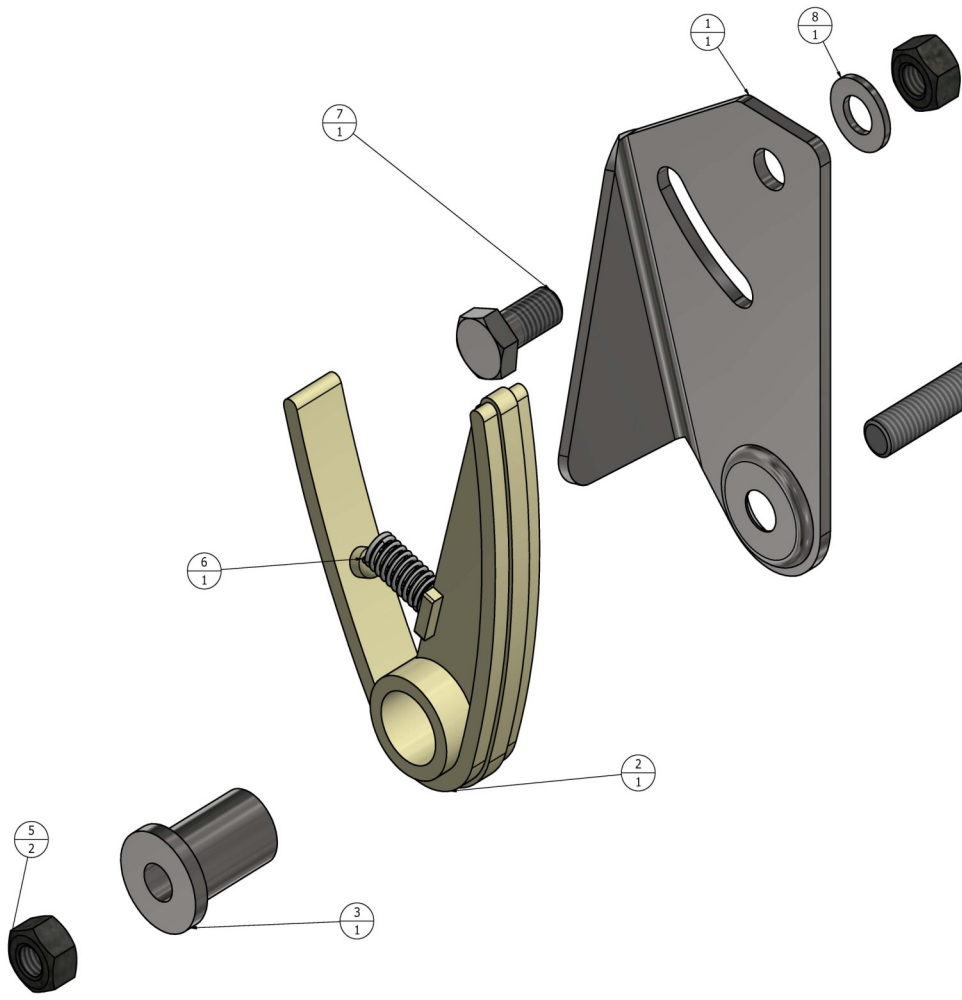
PARTS LIST			
ITEM	QTY	PART NUMBER	DESCRIPTION
1	1	P003-17	Plate; Sole 17"
2	1	P002-17	Blade, Bottom 17"
3	6	P004	SCREW, CSK - 0800020
4	6	P005	NUT, HEX - 0800000
5	4	P007	BOLT, HEX HEAD - 8X20
6	4	SC080	WASHER, SPRING M8 MEDIUM



17" Cylinder Mower

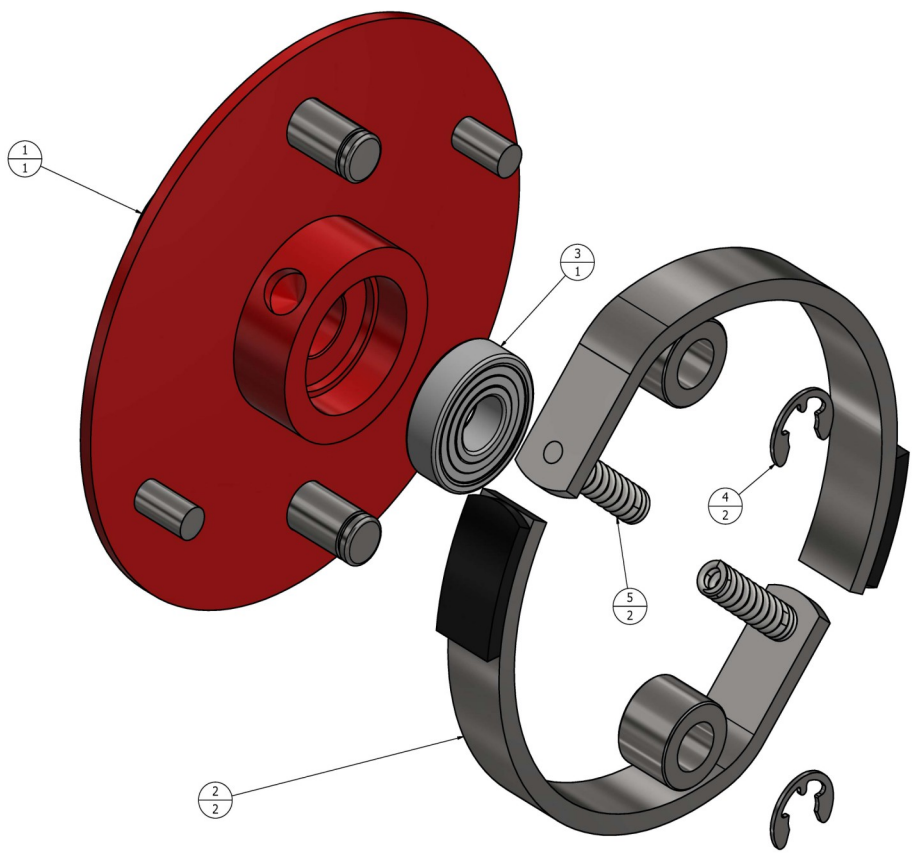
Item:	Item Description:
Bottom Spring	Bottom Spring Blade - 17 inch.

PARTS LIST			
ITEM	QTY	PART NUMBER	DESCRIPTION
1	1	P077A	Bracket Chain Tensioner
2	1	P077	Tensioner, Chain
3	1	P078	Bush Chain Tensioner
4	1	P080	Screw, C/S, 0800040
5	2	P118	NUT, NYLOC - 0800000
6	1	P079	SPRING, CHAIN TENSIONER
7	1	P097	BOLT, HEX HEAD - 0800016
8	1	P010	WASHER, FLAT - 8X12-1.7



Item:	Item Description:
Chain Tensioner	Chain Tensioner

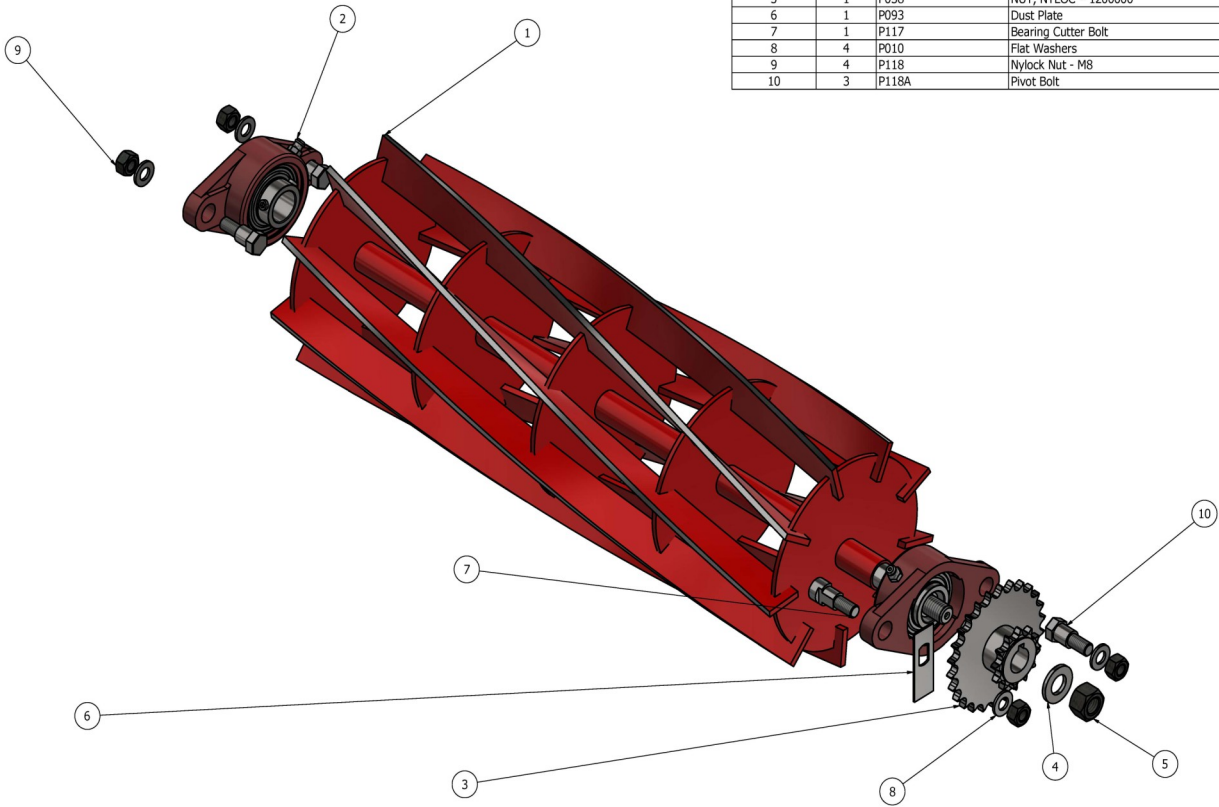
PARTS LIST			
ITEM	QTY	PART NUMBER	DESCRIPTION
1	1	P039	Plate Clutch Back
2	2	P043	Shoe Clutch
3	1	P042	Bearing, RLSS-2RS
4	2	P044	Circlip, Clutch Plate
5	2	P045	Spring, Clutch Plate



Item:	Item Description:
Clutch Assembly	Clutch Assembly

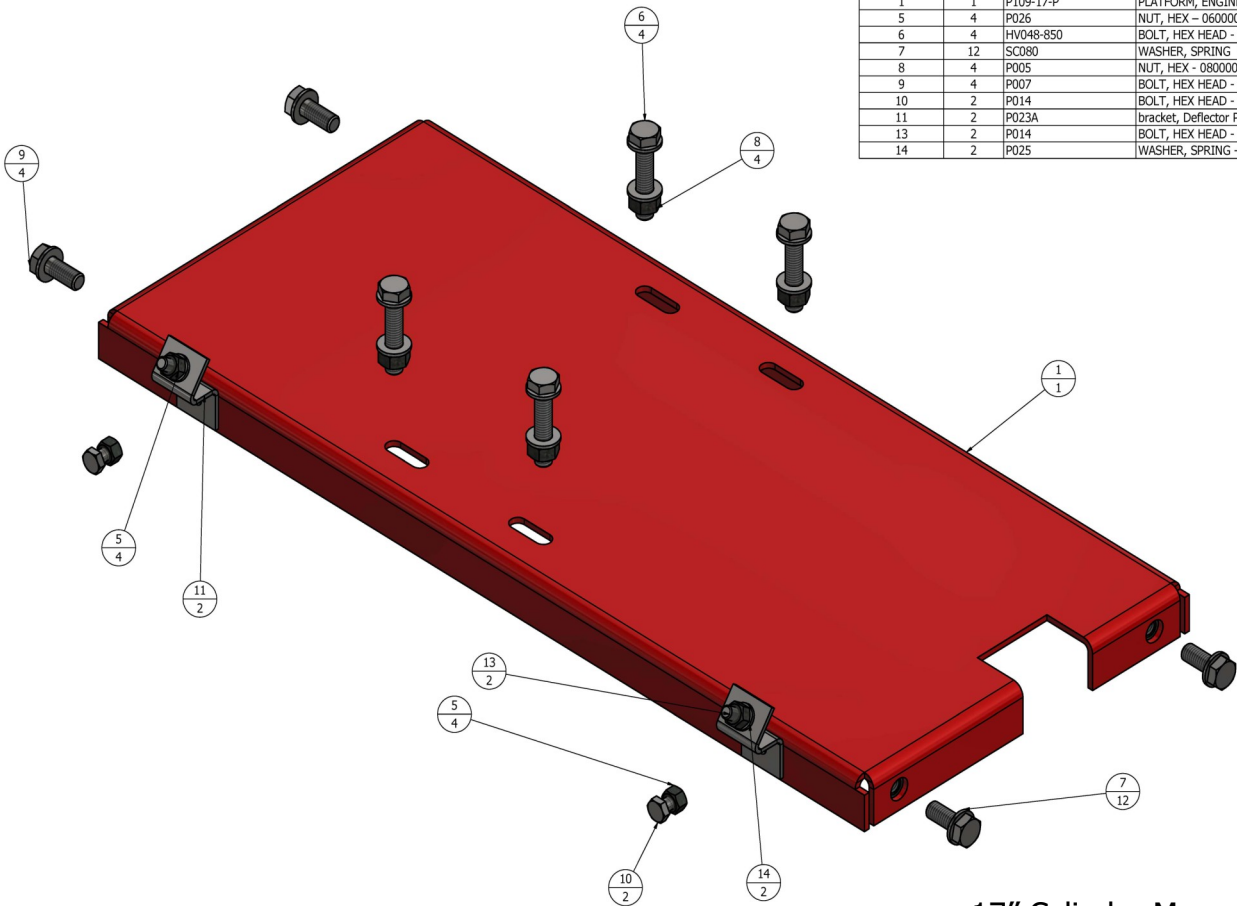
17" Cylinder Mower

PARTS LIST			
ITEM	QTY	PART NUMBER	DESCRIPTION
1	1	P001-17-9	Cutting Cylinder 17" - 9 Blade
2	2	P027 STD	BRG, CYLINDER STD
3	1	P074	Sprocket Cutter
4	1	P076	Flat Washer - 1201624
5	1	P038	NUT, NYLOC - 1200000
6	1	P093	Dust Plate
7	1	P117	Bearing Cutter Bolt
8	4	P010	Flat Washers
9	4	P118	Nylock Nut - M8
10	3	P118A	Pivot Bolt



Item:	Item Description:
	17 inch 9 Blade Assembly

PARTS LIST			
ITEM	QTY	PART NUMBER	DESCRIPTION
1	1	P109-17-P	PLATFORM, ENGINE 17 INCH
5	4	P026	NUT, HEX - 0600000
6	4	HV048-850	BOLT, HEX HEAD - 0800050
7	12	SC080	WASHER, SPRING M8 MEDIUM
8	4	P005	NUT, HEX - 0800000
9	4	P007	BOLT, HEX HEAD - 8X20
10	2	P014	BOLT, HEX HEAD - M6X12
11	2	P023A	bracket, Deflector Plate
13	2	P014	BOLT, HEX HEAD - M6X12
14	2	P025	WASHER, SPRING - 0600000



Item:	Item Description:
	17inch Motor Base Plate

17" Cylinder Mower

PROUDLY IMPORTED AND DISTRIBUTED BY:-

COX INDUSTRIES (AUST) PTY LTD

**70 LANDSEER STREET
ACACIA RIDGE QLD 4110**

coxmotors.com.au sales@coxmotors.com.au

