



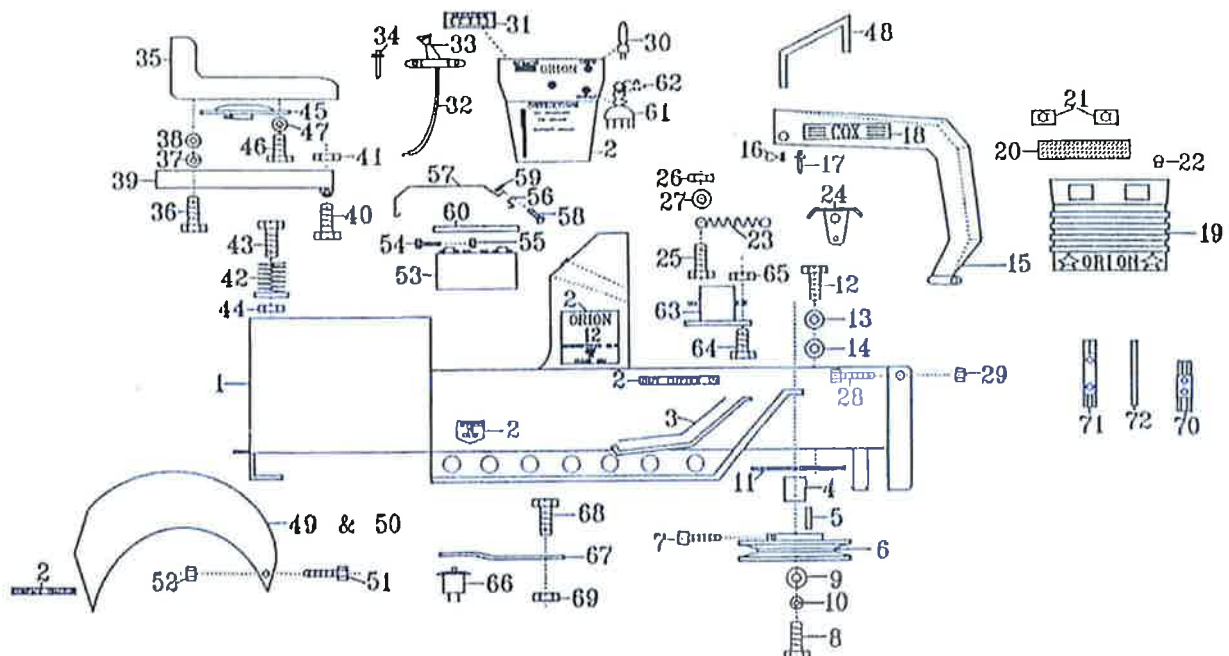
Orion 1990-1993



**ORION
COMPACT TRACTORS
1990-1993
09B0 – 09G0 – 09D1 – 09J1**

09B0 - 09G0 - 09D1 - 09J1 GROUP 11: CHASSIS & COMPONENTS

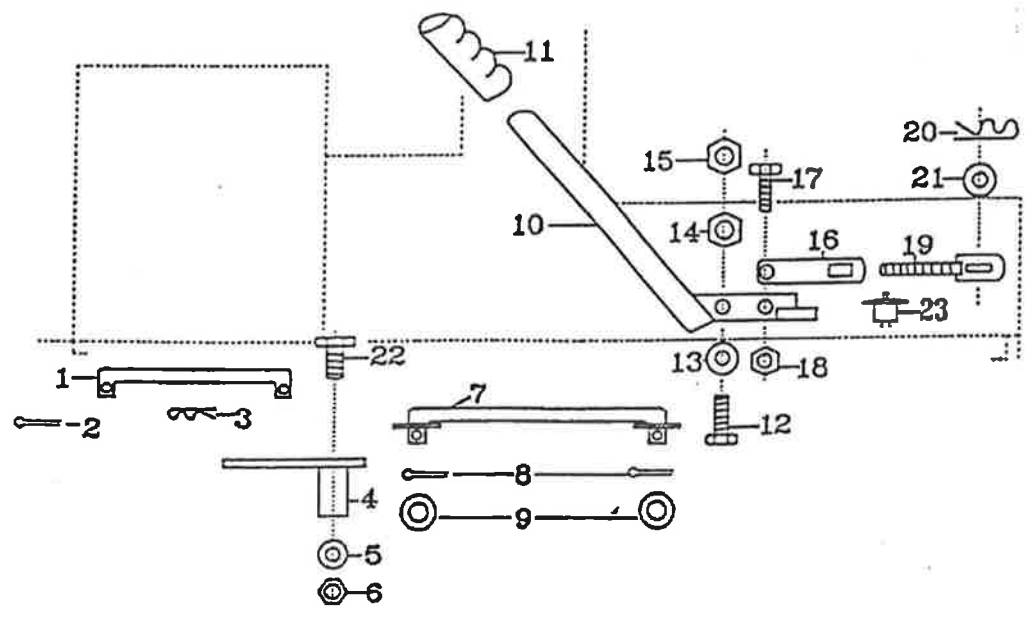
Ref. No.	Part No.	Description	Ref. No.	Part No.	Description
1	091101J1	Chassis NLA	36	B0512C	Seat Retaining Bolt (2)
2a	TR53	Transfer-Compact Tractor NLA	37	W05S	Seat Ret. Bolt S/Proof Washer (4)
2b	STR46	Transfer - 12HP	38	W052003	Seat Retaining Bolt Washer (4)
2c	TR52	Transfer - Out Cutter In NLA	39	AM226B99F	Seat Mount
2d	TR51	Transfer - Depress to Start	40	B0516C	Seat Mount Hinge Bolt (2)
2e	TR54	Transfer - Orion Dash NLA	41	N05CN	Hinge Bolt Nut (2)
2f	TR01J1	Transfer - COX	42	AM177	Seat Spring (2)
3	NSM01	Non-Skid - Clutch Pedal	43	B0612C	Seat Spring Retaining Bolt (2)
4	AM233	Engine Pulley Spacer	44	N06CN	Retaining Bolt Nut (2)
5	AM175	Engine Pulley Key	45	AM165	Seat Micro Switch NLA
6	AM234	Engine Pulley NLA USE KIT204	46	SR0408W	Seat Micro Attachment Bolt (2)
7	GS0505C	Engine Pulley Key Screw	47	W04S	Seat Micro Attachment Washer (2)
8	SH0720F	Engine Pulley Retaining Bolt	48	AM179	Bonnet Trim
9	W072004	Pulley Ret. Bolt Washer	49	091125Q2M	Mudguard LH Maroon 09J1 NLA
10	W07S	Ret. Bolt S/Proof Washer		091125	M/Guard LH 09B0,09G0, 09D1 NLA
11	AM078B0	Engine Mtng Bolt Plate (2)	49a	AM302	Mudguard LH 09J1 NLA
12	B0524C	Engine Mounting Bolt (4)	50	091126	M/Guard RH 09B0, 09G0, 09D1, 09J1 NLA
13	WS050216	Eng Mtg Bolt Spring Washer (4)	50a	AM303	Mudguard RH 09J1
14	W051216	Engine Mounting Bolt Washer	52	N04CN	Mudguard Retaining Bolt Nut (4)
15	SKIT47B/M	Bonnet Complete NLA	53		Battery Electric Start Only
	SAM235	Bonnet NLA	54	SH0412C	Terminal Bolt (2) E/Start Only
16	SAM178M	Bonnet Strap Pillar (2) NLA	55	N04C	Terminal Bolt Nut (2) E/Start Only
17	PR0306R	Bonnet Strap Pillar Rivet (2)	56	AM300	Battery Clamp (2) E/Start Only
18	SAM219	'COX' Badge (2) NLA	58	SR0420C	Battery Clamp Screw E/Start Only
19	SAM224NLQ2	Grill (No Lights) 09G0,09D1,09J1	59	N06C	Clamp Screw Nut E/Start Only
	AM224F3	Bonnet Grill (Lights) 09B0 NLA	60	AM098M8	Battery Cover Electric Start Only
20	S091128	'ORION' Badge	61	AM014	Ignition Switch
21	091130	Dash Plug Small	62	AM015	Solenoid Electric Start Only
22	091131	Dash Plug Lrg 09G0,09D1,09J1	64	SH0408C	Solenoid Mtg Bolt (2) E/Start Only
	AM211	Hourmeter 09B0	65	N04CN	Solenoid Mtg Bolt Nut (2) E/Start
23	AM180	Bonnet Spring (2)	66	AM092	Micro Switch Elect Start Only NLA
24	AM181	Bonnet Strap (2)	67	AM100R2	Micro Spring Plate E/S Only NLA
25	SH0408C	Bonnet Spring Bolt (2)	68	SH0408C	Spring Plate Bolt E/Start Only
26	N04CN	Bonnet Spring Nut (2)	69	N04CN	Spring Plate Bolt Nut E/Start Only
27	W040816	Bonnet Spring Washer (2)	70	AM005G0	Spark Plug Spanner
28	SH0412C	Bonnet Hinge Bolt (2)	71	AM006C1	Tube Spanner
29	N04CN	Bonnet Hinge Bolt Nut (2)	72	AM007	Tommy Bar
32	KIT51S2	Throttle Cable c/w Lever		AM222	Head Light Lens 09B0
33	AM088	Throttle Lever		AM221	Head Light Reflector (2) 09B0 NLA
34	PR0306	Throttle Lever Rivet (2)		AM228	Lamp (2) 09B0
35	AM164	Seat NLA		AM229	Light Switch 09B0





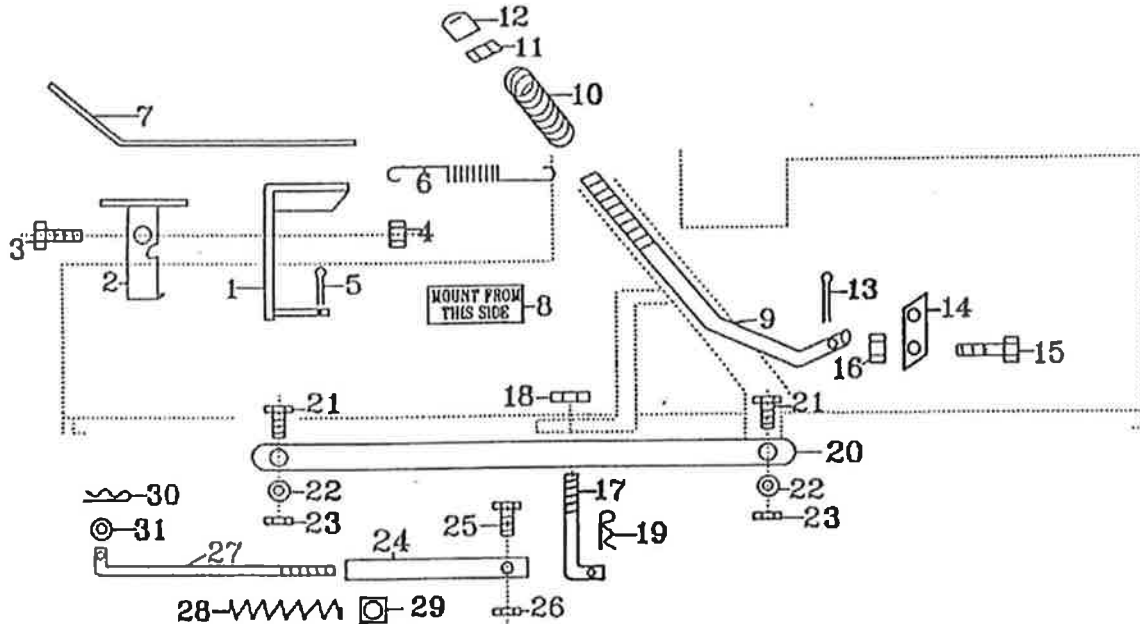
09B0 - 09G0 - 09D1 - 09J1 GROUP 12: RIGHT SIDE OF CHASSIS

Ref. No.	Part No.	Description
1	AM238	Clutch Rod Short
2	CP3-220	Clutch Rod Short Split Pin
3	RP01	Clutch Rod Short 'R' Pin
4	AM182E94	Clutch Rod Pivot Plate
5	W061216	Clutch Rod Pivot Plate Washer
6	N06CN	Clutch Rod Pivot Plate Nut
7	S091202F3	Clutch Rod Long
8	CP3-220	Clutch Rod Long Split Pin (2)
9	W071416	Clutch Rod Long Washer (2)
10	AM239H0	Disengaging Handle
11	AM009	Handle Grip
12	B0625C	Disengaging Handle Pivot Bolt
13	W061216	Disengaging Handle Pivot Bolt Washer (2)
14	N06C	Disengaging Handle Pivot Bolt Nut
15	N06CN	Disengaging Handle Pivot Bolt Lock nut
16	AM240	Disengaging Adjuster Bushed
17	B0512C	Disengaging Adjuster Bolt
18	N05C	Disengaging Adjuster Bolt Nut
19	AM241	Disengaging Adjuster Threaded
20	RP01	Disengaging Adjuster 'R' Pin
21	W051216	Disengaging Adjuster Washer (2)
22	B0636C	Clutch Pivot Plate Bolt
23	AM092	Disengaging Micro Switch NLA



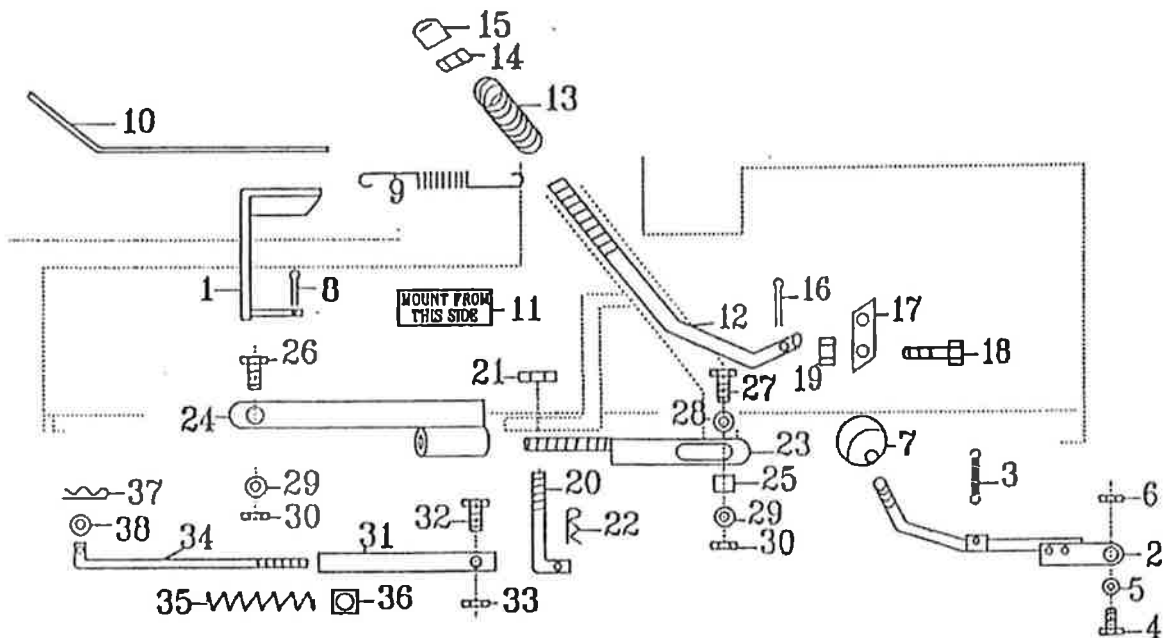
09B0 - 09G0 - 09D1 GROUP 13: LEFT SIDE OF CHASSIS

Ref. No.	Part No.	Description
1	AM184	Brake Pedal NLA
2	SAM187	Brake Pedal Rack
3	B0516C	Brake Pedal Rack Bolt
4	N05CN	Brake Pedal Rack Bolt Nut
5	CP3-220	Brake Pedal Split Pin
6	AM183	Brake Pedal Spring
7	NSM01	Foot Rest Rubber
8	DEC09G0	Complete Transfer Set NLA
9	AM143M9	Height Adjustment Pawl Push Rod
10	AM012	Height Adjustment Pawl Push Rod Spring
11	N04C	Height Adjustment Pawl Push Rod Lock nut
12	AM013Q2	Height Adjustment Pawl Push Rod Button
13	CP2-512	Height Adjustment Pawl Push Rod Split Pin
14	AM011	Height Adjustment Pawl
15	B0516C	Height Adjustment Pawl Pivot Bolt
16	N06CN	Height Adjustment Pawl Pivot Bolt Nut
17	AM185B0	Cutter Housing Lifting Link
18	N06CN	Cutter Lifting Link Nut
19	RP02	Cutter Lifting Link 'R' Pin
20	AM186	Front to Rear Connecting Rod NLA
21	B0616C	Front to Rear Connecting Rod Bolt (2)
22	W061216	Connecting Rod Bolt Washer (2)
23	N06CN	Connecting Rod Bolt Nut (2)
24	AM034H0	Cutter Brake Adjusting Bracket
25	B0516C	Cutter Brake Adjusting Bracket Bolt
26	N05CN	Cutter Brake Adjusting Bracket Bolt Nut
27	091310	Cutter Brake Adjusting Rod
28	AM035	Cutter Brake Spring
29	NS05C	Cutter Brake Adjustment Rod Nut
30	RP01	Cutter Brake Adjustment Rod 'R' Pin
31	W051216	Cutter Brake Adjustment Rod Washer



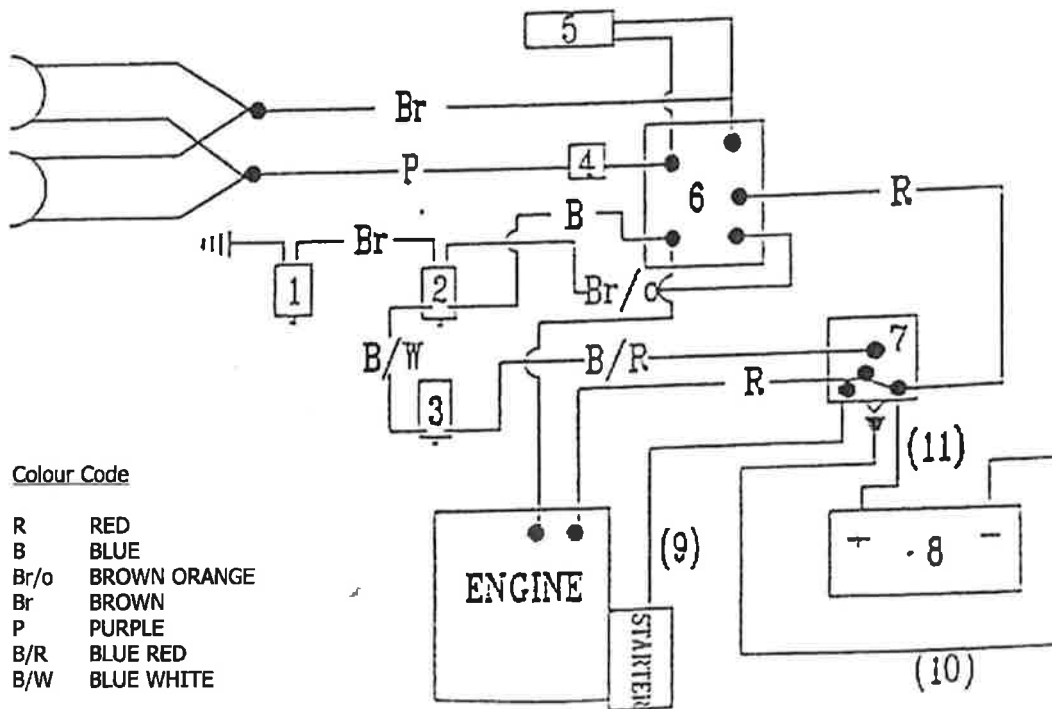
09J1 GROUP 13: LEFT SIDE OF CHASSIS

Ref. No.	Part No.	Description
1	AM285	Brake Pedal
2	AM284KG05	Hand Park Brake
3	AM288	Hand Brake Spring
4	B0624C	Hand Park Brake Bolt
5	W061216	Hand Park Brake Washer
6	N06CN	Hand Park Brake Nut
7	AM290	Hand Brake Knob
8	CP3-220	Brake Pedal Split Pin
9	AM183	Brake Pedal Spring
10	NSM01	Non-Skid Material-Clutch Pedal
11	STR08	Transfer – Mount This Side
12	AM143M9	Height Adjustment Pawl Push Rod
13	AM012	Height Adjustment Pawl Push Rod Spring
14	N04C	Height Adjustment Pawl Push Rod Lock Nut
15	AM013Q2	Height Adjustment Pawl Push Rod Button
16	CP2-512	Height Adjustment Pawl Push Rod Split Pin
17	AM011	Height Adjustment Pawl
18	B0516C	Height Adjustment Pawl Pivot Bolt
19	N05CN	Height Adjustment Pawl Pivot Bolt Nut
20	AM185B0	Cutter Housing Lifting Link
21	N06CN	Cutter Lifting Link Nut
22	RP02	Cutter Lifting Link 'R' Pin
23	AM267	Front to Rear Connecting Rod Threaded
24	AM268	Front to Rear Connecting Rod Bushed
25	AM249	Connecting Rod Bush
26	B0616C	Front to Rear Connecting Rod Bolt Front
27	B0620C	Front to Rear Connecting Rod Bolt Rear
28	W0620HD	Connecting Rod Rear Bolt Washer
29	W061216	Connecting Rod Bolt Washer (2)
30	N06CN	Connecting Rod Bolt Nut (2)
31	AM034H0	Cutter Brake Adjusting Bracket
32	B0512C	Cutter Brake Adjusting Bracket Bolt
33	N05CN	Cutter Brake Adjusting Bracket Bolt Nut
34	091310	Cutter Brake Adjusting Rod
35	AM035	Cutter Brake Spring
36	NS05C	Cutter Brake Adjusting Rod Nut
37	RP01	Cutter Brake Adjusting Rod 'R' Pin
38	W051216	Cutter Brake Adjusting Rod Washer



09B0 – 09G0 – 09D1 GROUP 14 : ELECTRICAL CIRCUIT

Ref No.	Part No.	Description
1	AM165	Seat Micro NLA
2	AM092	Disengaging Micro NLA
3	AM092	Foot Micro Electric Start Only NLA
4	AM229	Light Switch 09B0
5	AM211	Hourmeter 09B0
6	AM014	Ignition Switch
7	AM159	Solenoid Electric Start Only
8		Battery Electric Start Only
9	13115	Solenoid to Starter (Red) Electric Start Only
10	13116	Chassis to Engine Black Electric Start Only
	13116	Chassis to Engine Black
11	13115	Battery to Solenoid (Red) Electric Start Only
	AM244N1	Wiring Loom Electric Start Only NLA
	091431	Wiring Loom Electric Start Only NLA
	SAM104	Fuse Electric Start Only NLA
	SAM160	Fuse Holder Electric Start Only NLA
	AM096	Loom Clamp
	PR0308	Loom Clamp Pop Rivet
	W030816	Pop Rivet Washer
	SH0412C	Earth Lead Bolt
	N04CN	Earth Lead Bolt Nut
	AM265	Engine to Solenoid (Tecumseh) 09B0
	091416L8	Engine to Solenoid (Honda) 09B0 NLA

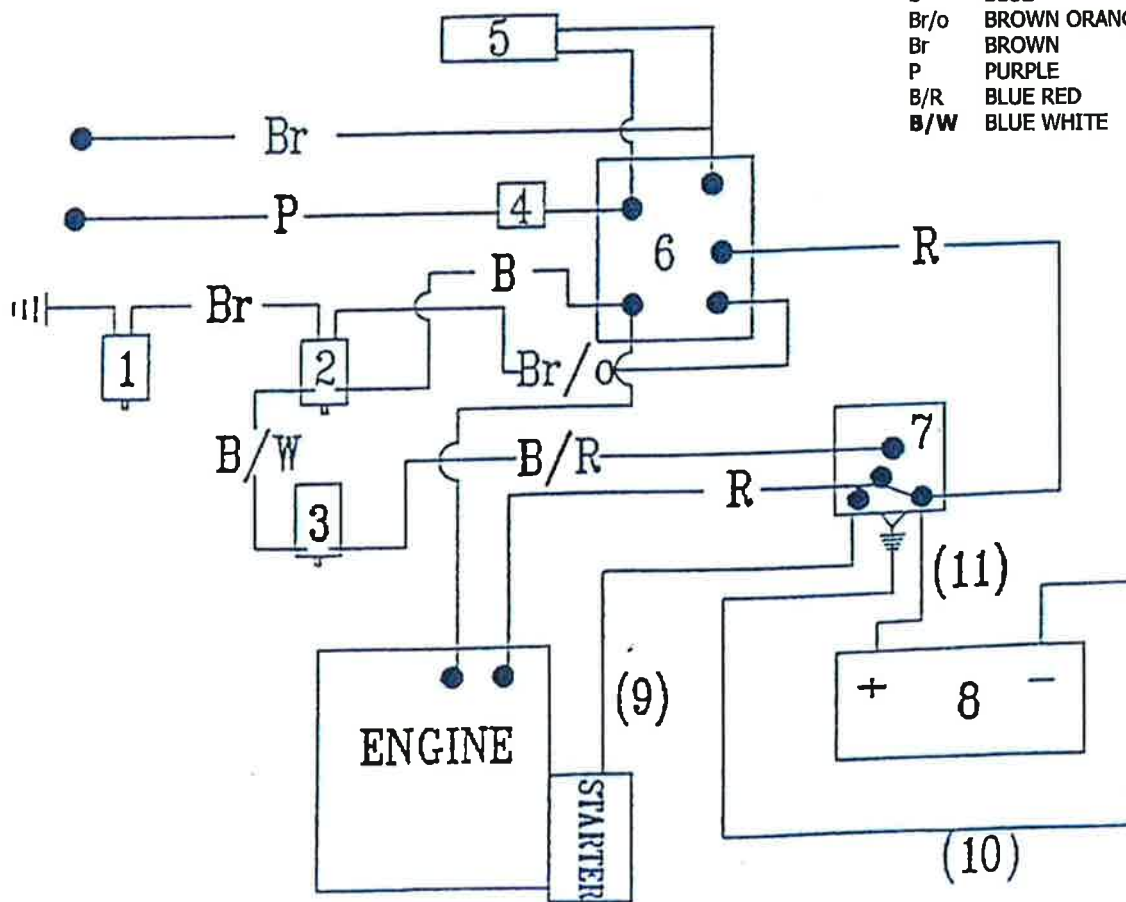


09J1 GROUP 14 : ELECTRICAL CIRCUIT

Ref No.	Part No.	Description
1	AM165	Seat Micro NLA
2	AM092	Disengaging Micro NLA
3	AM092	Foot Micro NLA
6	AM014	Ignition Switch
	AM015	Ignition Key (2)
7	AM159	Solenoid
8		Battery
9	AM265	Lead -- Starter Motor to Solenoid (Tecumseh) Red
	251401	Charge Lead -- Orange NLA
10	13116	Battery to Solenoid (Black)
	13116	Chassis to Engine (Black)
11	13115	Battery to Solenoid (Red)
	13115	Solenoid to Starter Motor (Red)
	AM244N1	Wiring Loom NLA
	SAM104	Fuse NLA
	SAM160	Fuse Holder NLA
	AM096	Loom Clamp (2)
	PR0308	Loom Clamp Pop Rivet (2)
	W030816	Pop Rivet Washer (2)
	SH0408C	Earth Lead Bolt
	N04CN	Earth Lead Bolt Nut

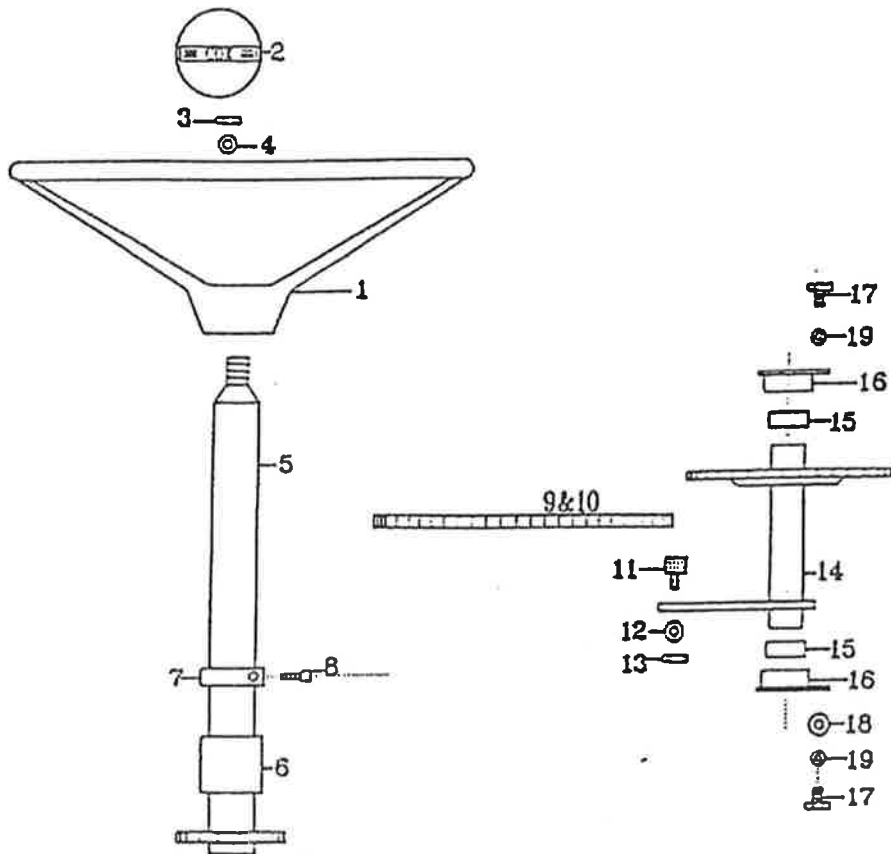
Colour Code

R	RED
B	BLUE
Br/o	BROWN ORANGE
Br	BROWN
P	PURPLE
B/R	BLUE RED
B/W	BLUE WHITE



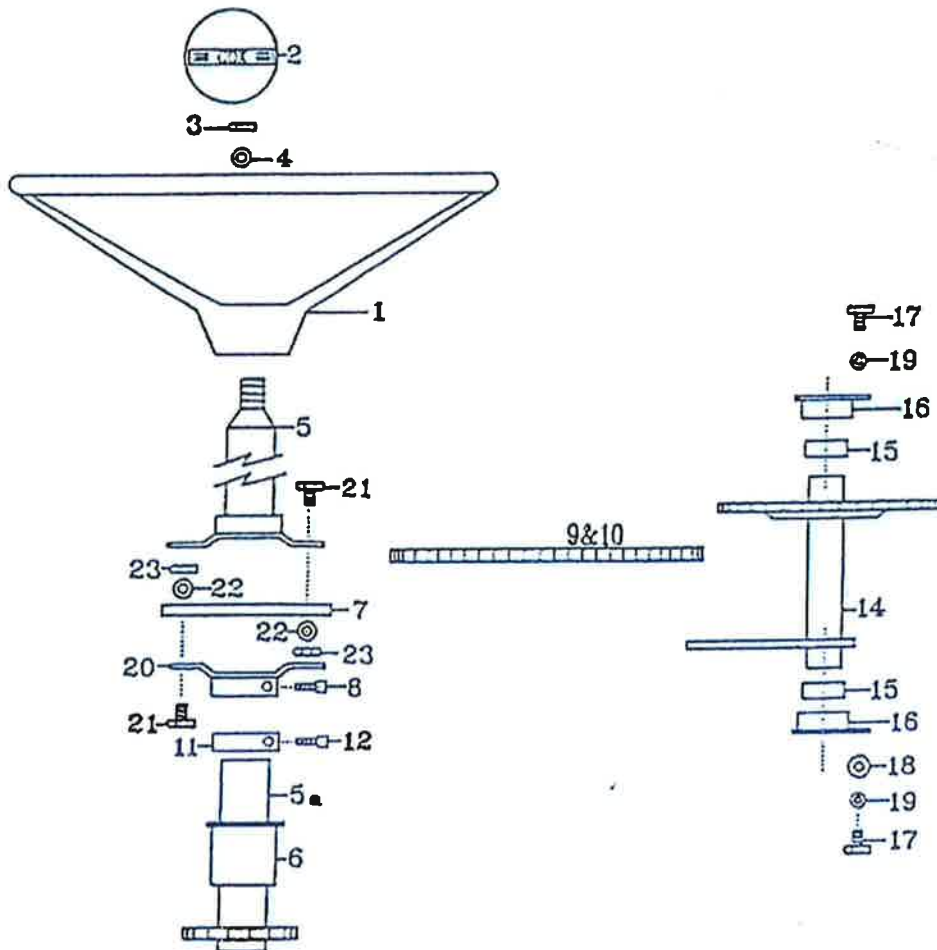
09B0 - 09G0 GROUP 15: STEERING COMPONENTS

Ref. No.	Part No.	Description
1	SKIT37	Steering Wheel including Emblem
	AM167M8	Steering Wheel
2	AM225	Steering Wheel Emblem
3	N06CN	Steering Wheel Nut
4	W061216	Steering Wheel Nut Washer
5	S091502A9	Steering Shaft NLA
6	AM017C1	Steering Shaft Bush (2)
7	AM066	Steering Shaft Lock Collar
8	GS0404C	Steering Shaft Lock Collar Set Screw
9	AM018	Steering Chain Including Link
10	SAM019	Connecting Link
11	AM046	Steering Tie Rod Pivot Block NLA
12	W061216	Steering Tie Rod Pivot Block Washer
13	N06CN	Steering Tie Rod Pivot Bolt Nut
14	S091504F3	Steering Idler Shaft
15	AM215	Steering Idler Shaft Mounting Bracket Bush (2)
16	SAM214	Steering Idler Shaft Mounting Bracket (2) NLA
17	B0512C	Steering Idler Shaft Mtg Bracket Bolt (4)
18	W051216	Steering Idler Shaft Mtg Bracket Washer (2)
19	W05S	Steering Idler Shaft Mtg Bracket S/p Washer (4)



09D1 - 09J1 GROUP 15: STEERING COMPONENTS

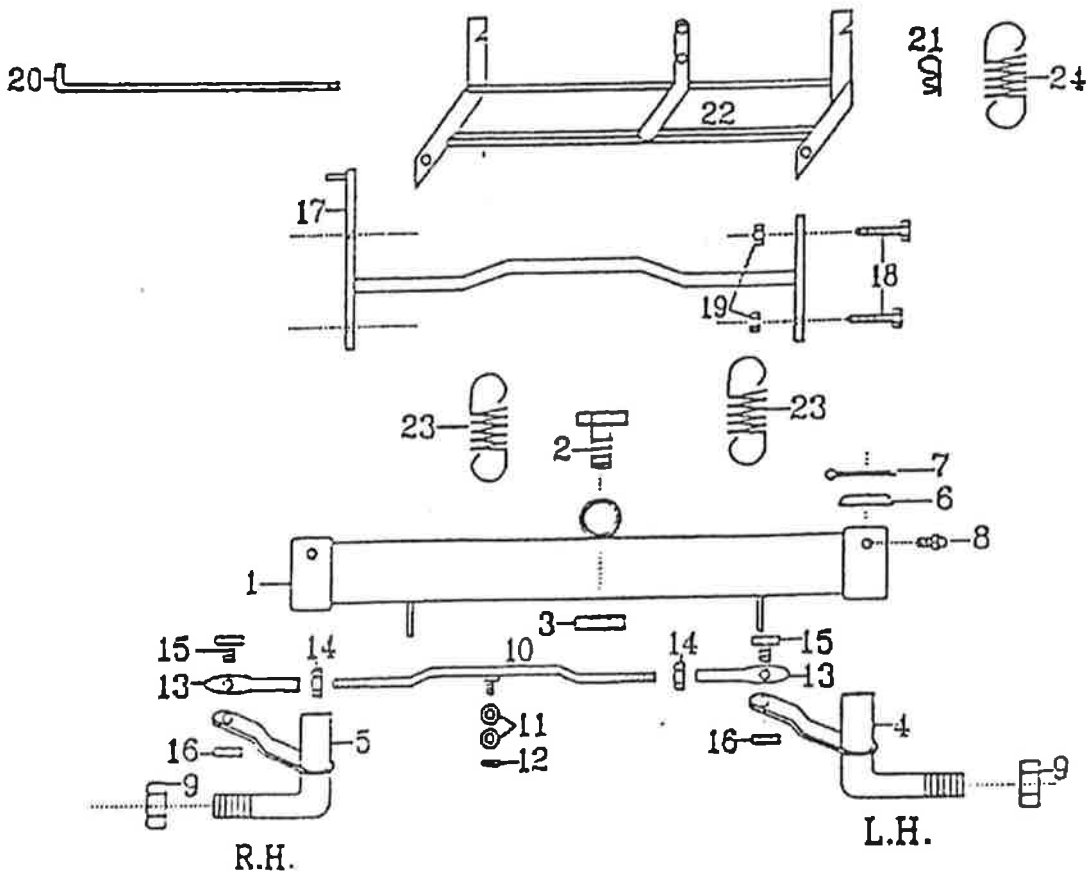
Ref. No.	Part No.	Description
1	SKIT37	Steering Wheel including Emblem
	AM167M8	Steering Wheel
2	AM225	Steering Wheel Emblem
3	N06CN	Steering Wheel Nut
4	W061216	Steering Wheel Nut Washer
5	AM250	Steering Shaft Upper
5a	AM251G4	Steering Shaft Lower
6	AM017C1	Steering Shaft Bush (3)
7	AM25399J	Steering Shaft Universal
8	SS0408W	Steering Shaft Flange Set Screw
9	AM018	Steering Chain Including Link
10	SAM019	Connecting Link
11	AM066	Steering Shaft Lock Collar
12	GS0404C	Lock Collar Set Screw
14	SAM254	Steering Idler Shaft
15	AM215	Steering Idler Shaft Mounting Bracket Bush (2)
16	AM255	Steering Idler Shaft Mounting Bracket (2)
17	B0512C	Steering Idler Shaft Mtg Bracket Bolt (4)
18	W051216	Steering Idler Shaft Mtg Bracket Washer (2)
19	W055	Steering Idler Shaft Mtg Bracket S/p Washer (4)
20	AM252	Steering Shaft Flange
21	SH0416C	Flange Mounting Bolt (4)
22	W041216	Flange Mounting Bolt Washer (4)
23	N04CN	Flange Mounting Bolt Nut (4)



09B0 - 09G0 GROUP 16: FRONT AXLE COMPONENTS

Ref. No.	Part No.	Description
1	SAM190***	Front Axle Beam NLA
2	B1236W	Front Axle Pivot Bolt NLA
3	SAM191	Front Axle Pivot Bolt Nut
4	AM067	Stub Axle LH NLA
5	AM068	Stub Axle RH NLA
6	AM069	Stub Axle Dust Cap (2)
7	CP3-225	Stub Axle Split Pin (2)
8	GNTF3	Stub Axle Grease Nipple (2)
9	NHM20X1.5T	Front Wheel Nut (2)
10	S091607F3	Tie Rod NLA
11	W061216	Tie Rod Pivot Bolt Washer (2)
12	N06CN	Tie Rod Pivot Bolt Nut
13	AM020	Tie Rod End (2)
14	N06F	Tie Rod End Lock nut (2)
15	B0620C	Tie Rod End Bolt (2)
16	N06CN	Tie Rod End Bolt Nut (2)
17	SAM192G3	Front Axle Connecting Link NLA
18	B0620C	Connecting Link Bolt (4)
19	NF06CN	Connecting Link Bolt Nut (4)
20	AM039S2	Cutter Housing Pivot Rod NLA
21	RP02	Cutter Housing Pivot Rod 'R' Pin
22	SKIT62R	Cutter Housing Connecting Link
	AM230	Cutter Housing Connecting Link Bush (2)
23	AM040	Cutter Belt Tension Spring (2)
24	AM145	Weight Compensating Spring

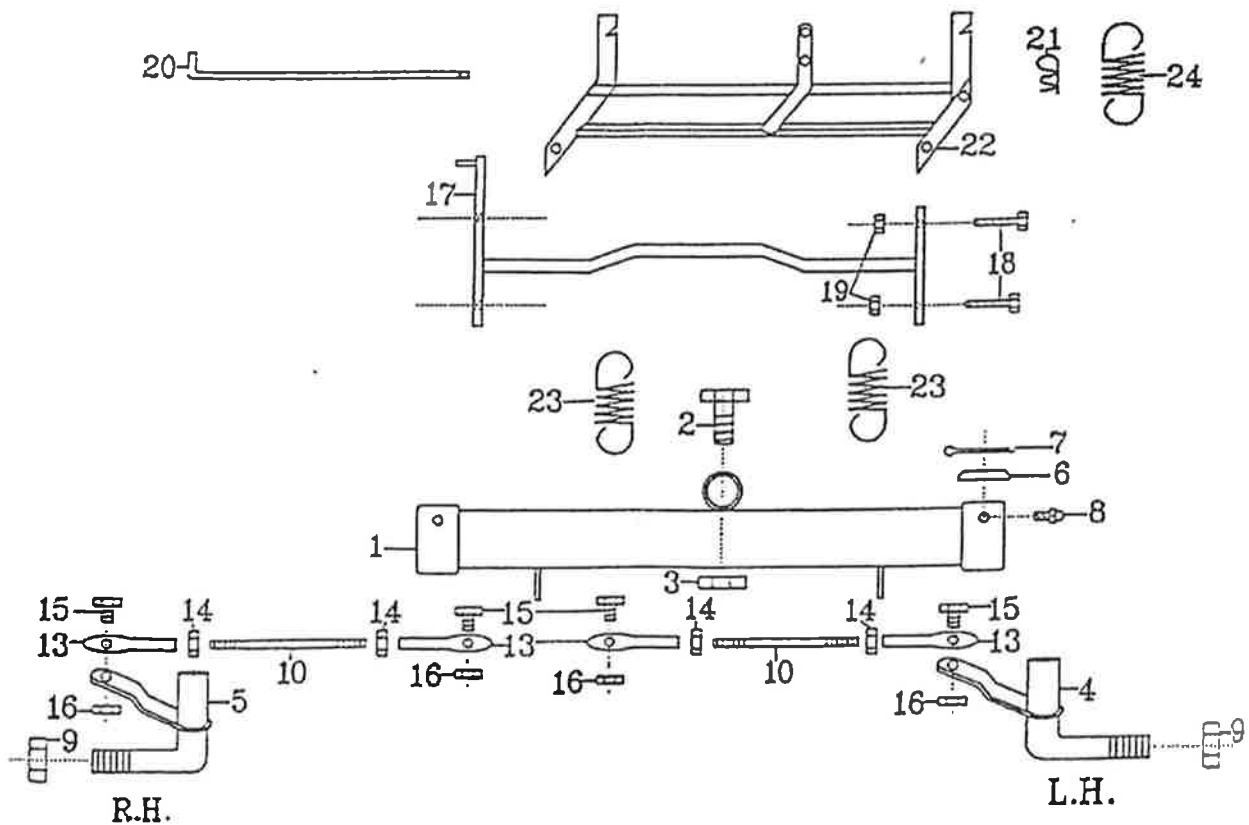
*** Replace with KIT163



09D1 - 09J1 GROUP 16: FRONT AXLE COMPONENTS

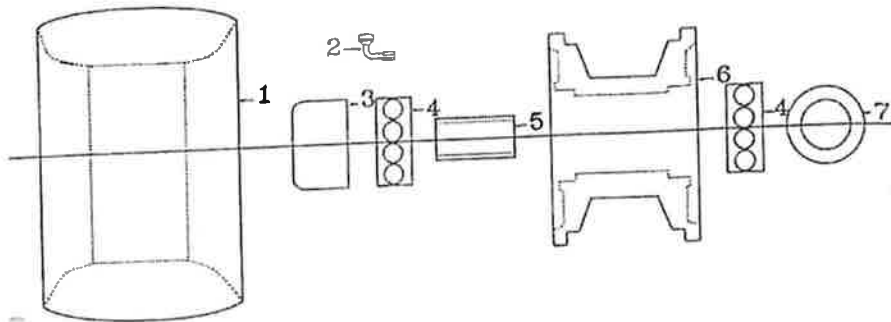
Ref. No.	Part No.	Description
1	SAM190***	Front Axle Beam NLA
2	B1236W	Front Axle Pivot Bolt
3	N12CN	Front Axle Pivot Bolt Nut
4	AM067	Stub Axle LHNLA
5	AM068	Stub Axle RHNLA
6	AM069	Stub Axle Dust Cap (2)
7	CP3-225	Stub Axle Split Pin (2)
8	GNTF3	Stub Axle Grease Nipple (2)
9	NHM20X1.5T	Front Wheel Nut (2)
10	AM256	Tie Rod (2)
13	AM020	Tie Rod End (4)
14	N06F	Tie Rod End Lock nut (4)
15	B0620C	Tie Rod End Bolt (4)
16	N06CN	Tie Rod End Bolt Nut (4)
17	SAM192G3	Front Axle Connecting LinkNLA
18	B0616C	Connecting Link Bolt (4)
19	N06CN	Connecting Link Bolt Nut (4)
20	AM039S2	Cutter Housing Pivot Rod NLA
21	RP02	Cutter Housing Pivot Rod 'R' Pin
22	SKIT62R	Cutter Housing Connecting Link including Bushes
	AM230	Cutter Housing Connecting Link bush (2)
23	AM040	Cutter Belt Tension Spring (2)
24	AM145	Weight Compensating Spring

*** Replace with KIT163



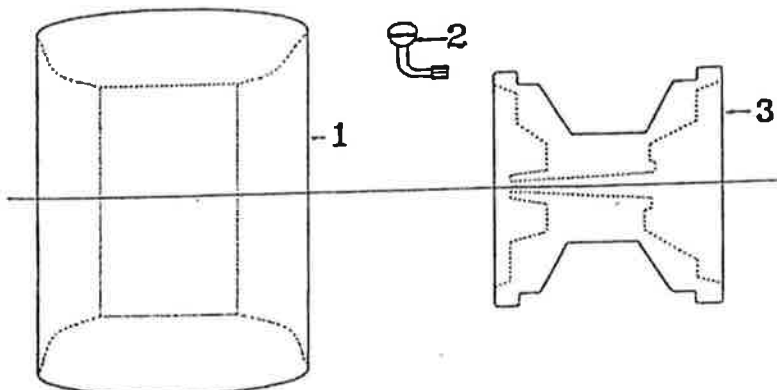
09B0 - 09G0 - 09D1 - 09J1 GROUP 17: FRONT WHEEL COMPONENTS

Ref. No.	Part No.	Description
1	TT500x6 STU500X6	Front Wheel Tyre & Tube (2) Tube
3	AM07099C	Front Wheel Hub Cap (2)
4	BB204212N	Front Wheel Bearing (4)
5	AM021	Front Wheel Bearing Spacer (2)
6	AM193M9	Front Wheel Hub (2)
7	W203902	Inner Dust Washer (2)



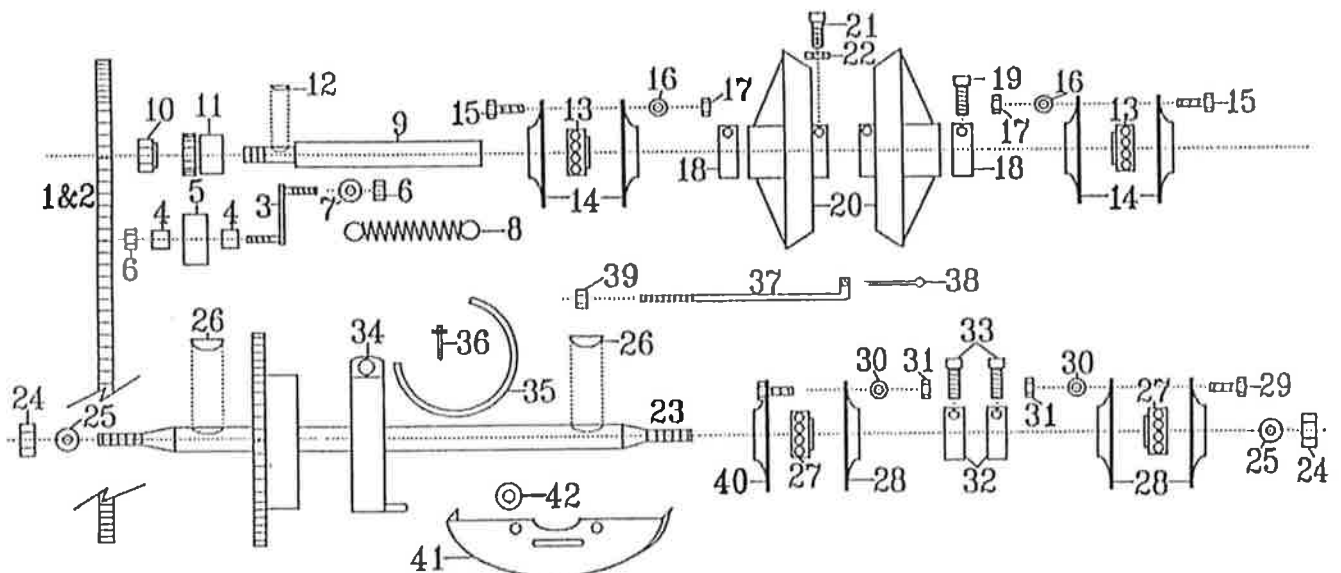
09B0 - 09G0 - 09D1 - 09J1 GROUP 18: REAR WHEEL COMPONENTS

Ref. No.	Part No.	Description
1	TT650x8 STU650X8	Rear Wheel Tyre & Tube (2) Tube
3	AM194	Rear Wheel Hub (2)



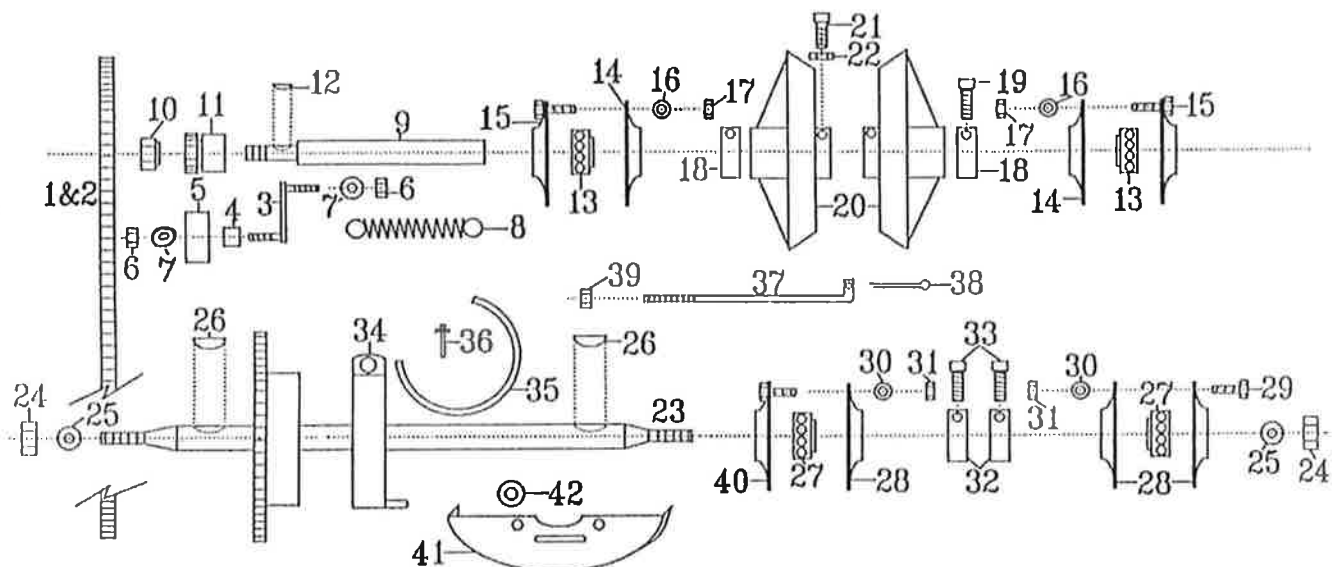
09B0 - 09G0 GROUP 19: DRIVE COMPONENTS

Ref. No.	Part No.	Description
1	AM018	Drive Chain Including Conn Link
2	SAM019	Drive Chain Connecting Link
3	SAM245	Chain Tensioner NLA
4	AM231	Bearing Spacer (4) NLA
5	BB256217N	Bearing (2)
6	N06CN	Retainer Nut (4)
7	W061216	Retaining Nut Washer (4)
8	AM180	Chain Tensioner Spring (2)
9	SAM071E95	Intershaft
10	SAM022	Intershaft Nut
11	SKIT30	Intershaft Sprocket & Key
12	SK03	Intershaft Sprocket Key
13	BB25SAN	Intershaft Bearing (2)
14	AM024	Intershaft Bearing Flange (4)
15	B0616C	Intershaft Bearing Flange Bolt (6)
16	W061216	Intershaft Bearing Flange Bolt Washer (6)
17	N06CN	Intershaft Bearing Flange Bolt Nut (6)
18	AM025	Intershaft Lock Collar (2)
19	SS0506W	Intershaft Lock Collar Set Screw (2)
20	AM197	Clutch Plate (2)
21	SS0612W	Clutch Plate Set Screw (4)
22	N06C	Clutch Plate Set Screw Lock Nut (4) NO LONGER USED
23	SAM198	Rear Axle NLA USE SKIT119
24	N10F	Rear Axle Nut (2)
25	W102016	Rear Axle Washer (2)
26	K18	Rear Axle Key (2)
27	BB25SAN	Rear Axle Bearing (2)
28	AM024	Rear Axle Bearing Flange (3)
29	B0616C	Rear Axle Bearing Flange Bolt (3)
30	W061216	Rear Axle Bearing Flange Bolt Washer (3)
31	N06CN	Rear Axle Bearing Flange Bolt Nut (3)
32	AM025	Rear Axle Lock Collar (2)
33	SS0506W	Rear Axle Lock Collar Set Screw (2)
34	KIT16	Drum Brake Band Including Lining
35	AM200	Drum Brake Band Lining
36	PR0205	Drum Brake Band Lining Rivet (4)
37	S091908F3	Drum Brake Rod
38	CP3-220	Drum Brake Rod Split Pin
39	N05CN	Drum Brake Rod Nut
40	AM202	Rear Axle Bearing Flange LH
41	AM203	Chain Guard Lower
42	W061216	Chain Guard Lower Washer (2)



09D1 - 09J1 GROUP 19: DRIVE COMPONENTS

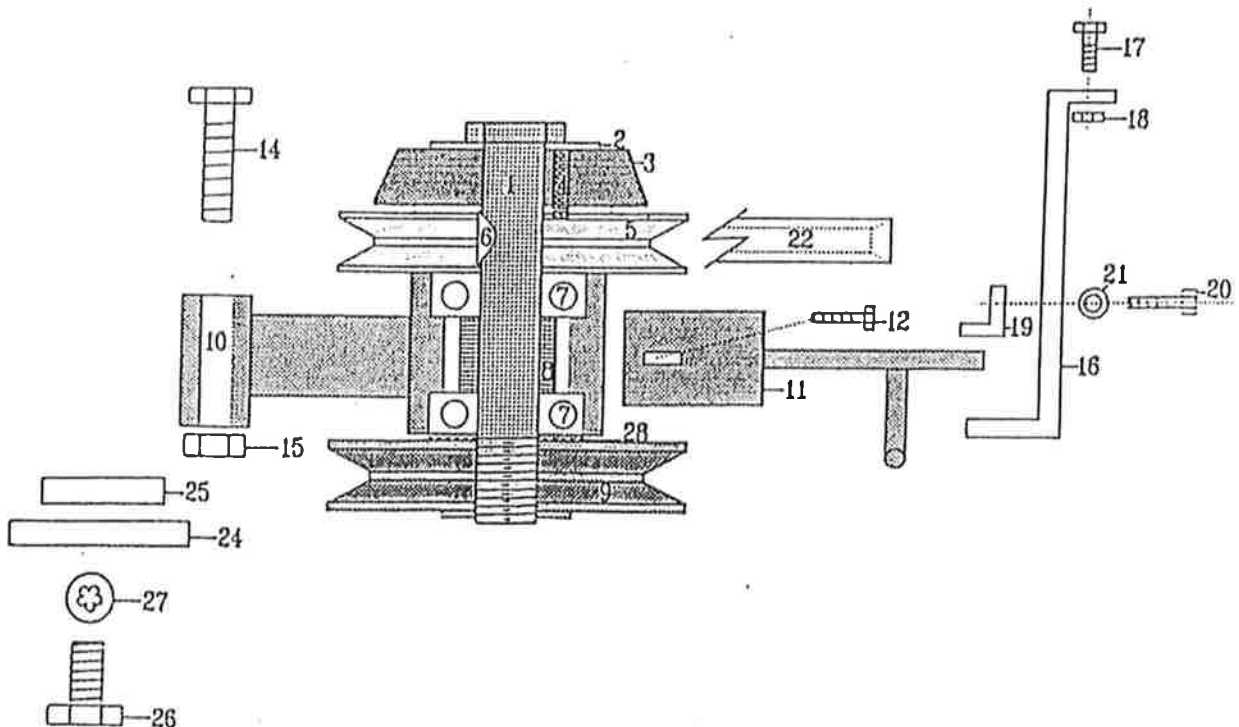
Ref. No.	Part No.	Description
1	AM018	Drive Chain Including Conn Link
2	SAM019	Drive Chain Connecting Link
3	SAM245	Chain Tensioner (2) NLA
4	AM275	Spacer (2)
5	PIFBB126598A	Pulley (2)
6	N06CN	Retaining Nut (4)
7	W061216	Retaining Nut Washer (6)
8	AM180	Chain Tensioning Spring
9	SAM071E95	Intershaft
10	SAM022	Intershaft Nut
11	SKIT30	Intershaft Sprocket & Key
12	SK03	Intershaft Sprocket Key
13	BB25SAN	Intershaft Bearing (2)
14	AM024	Intershaft Bearing Flange (2)
15	AM286	Intershaft Bearing Flange (2) NLA
17	N06CN	Bearing Flange Bolt Nut (6)
18	AM025	Intershaft Lock Collar (2)
19	SS0506W	Intershaft Lock Collar Set Screw (2)
20	AM197	Clutch Plate (2)
21	SS0612W	Clutch Plate Set Screw (4)
22	N06C	Clutch Plate Set Screw Lock nut (4) NO LONGER USED
23	SAM198	Rear Axle NLA USE SKIT119
24	N10F	Rear Axle Nut (2)
25	W102016	Rear Axle Washer (2)
26	K18	Rear Axle Key (2)
27	BB25SAN	Rear Axle Bearing (2)
28	AM024	Rear Axle Bearing Flange (3)
29	B0616C	Rear Axle Bearing Flange Bolt (3)
30	W061216	Rear Axle Bearing Flange Bolt Washer (3)
31	N06CN	Rear Axle Bearing Flange Bolt Nut (6)
32	AM025	Rear Axle Lock Collar (2)
33	SS0506W	Rear Axle Lock Collar Set Screw (2)
34	KIT16	Drum Brake Band Including Lining
35	AM200	Drum Brake Band Lining
36	PR0205	Drum Brake Band Lining Rivet (4)
37	S091908F3	Drum Brake Rod
38	CP3-220	Drum Brake Rod Split Pin
39	N05CN	Drum Brake Rod Nut
40	AM202	Rear Axle Bearing Flange LH
41	AM203	Chain Guard
42	W061216	Chain Guard Washer (2)
**	KIT6898A	Chain Adjuster Dual Bearing Kit



09B0 - 09G0 - 09D1 - 09J1 GROUP 20: CLUTCH ARM & COMPONENTS

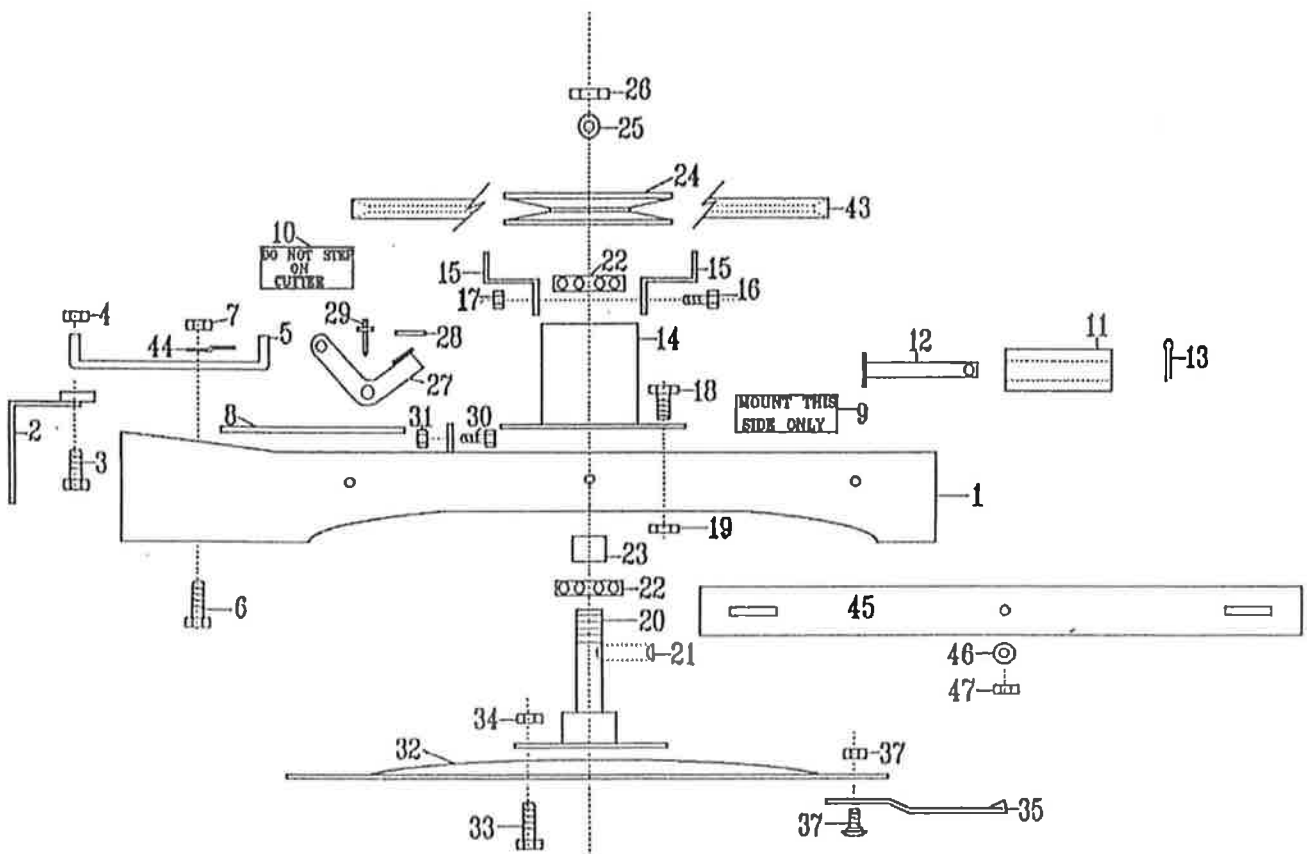
Ref. No.	Part No.	Description
1	AM204J3	Clutch Shaft including Nut
2	W204303	Clutch Cone Retaining Washer
3	KIT187	Clutch Cone
4	PDM0630	Clutch Cone Pin
5	AM158	Clutch Pulley Upper
6	SK09	Clutch Pulley Key
7	BB205215NS	Clutch Bearing (2)
8	AM072	Clutch Bearing Spacer
9	AM205	Clutch Pulley Lower
10	SKIT26	Clutch Arm c/w Yoke USE AM207
11	AM207	Clutch Arm
12	B0512C	Clutch Arm Yoke Retaining Bolt (2)
14	B0652C	Clutch Arm Pivot Bolt
15	N06CN	Clutch Arm Pivot Bolt Nut
16	AM206	Clutch Arm Locating Bracket
17	SH0412C	Clutch Arm Locating Bracket Bolt (2)
18	N04CN	Clutch Arm Locating Bracket Bolt Nut (2)
19	AM246	Clutch Arm Bracket Wear Plate
20	B0512C	Clutch Arm Bracket Wear Plate Bolt (2)
21	W051216	Clutch Arm Bracket Wear Plate Washer (2)
	W05S	Wear Plate Shakeproof Washer (2)
22	SV14	Belt - Engine to Clutch
24	AM208	Clutch Adjusting Plate
25	AM209	Clutch Adjusting Tapped Plate (2)
26	B0616C	Adjusting Plate Bolt (2)
27	W06S	Bolt Lock Washer (2)
28	W203902	Clutch Pulley Bearing Washer

** SKIT64 Clutch Arm Complete '87 On



09B0-09G0-09D1-09J1 GROUP 21: 28" MOWING ATTACHMENT COMPONENTS

Ref. No.	Part No.	Description	Ref. No.	Part No.	Description
1	SKIT123	Cutter Housing c/w F/Cover	25	W204303	Pulley Ret. Washer (2)
2	AM259	Deflector	26	NHM20X1.5T	Pulley Ret. Nut
	AM272	Deflector Spring	27	KIT15	Cutter Brake Incl. Pad
3	AM273	Deflector Rod	28	AM033I95	Cutter Brake Pad
4	AM274	Deflector Ratchet Plate	29	PR0205	Brake Pad Pop Rivet (2)
	W041216	Deflector Bracket Washer	30	B0520C	Cutter Brake Pivot Bolt
5	AM052E1	Deflector Bracket	31	N05CN	Cutter Brake Pivot Bolt Nut
6	SH0412C	Deflector Bracket Bolt	32	AM07604A	Cutter Disc
7	N04CN	Deflector Bracket Bolt Nut (2)	33	B0612C	Cutter Disc Ret. Bolt (4)
9	STR56	Transfer Warning	34	N06CN	Cutter Disc Ret. Bolt Nut (4)
10	STR49	Transfer Cutter	35	SMB150S	Cutter Blade - Stepped
11	AM036D9	Cutter Housing Roller		SMB150A	Cutter Blade - Air Flow (Optional)
12	AM037	Cutter Roller Shaft	37	SKIT01D1	Blade Bolt & Nut Set
13	CP3-225	Cutter Roller Shaft Split Pin	43	V07	Belt - Cutter to Clutch
14	SKIT08	Cutter Bearing Hsng c/w Belt Guides	45	AM220	Cutter Front Guard
15	AM073	Belt Guides (2)	46	W051216	Cutter Guard Washer (3)
16	B0416C	Belt Guide Bolt (2)	47	N05CN	Cutter Guard Ret. Nut (3)
17	N04CN	Belt Guide Bolt Nut (2)			
18	B0620C	Cutter Bearing Housing Bolt (4)	***	SKIT32N	Blade, Bolt, Nut Set - Stepped
19	NF06CN	Cutter Bearing Housing Bolt Nut (4)		SKIT33N	Blade, Bolt, Nut Set - Air Flow
20	13181	Cutter Shaft		SKIT35	Blade, Bolt, Nut Set - Flat
21	SK09	Cutter Shaft Key		SKIT66	Deflector Kit
22	BB205215NS	Cutter Shaft Bearing (2)			
23	AM029	Bearing Spacer			
24	AM030	Cutter Shaft Pulley			



☆ORION☆ 09D1 OPERATING AND MAINTENANCE INSTRUCTIONS

IMPORTANT

When starting electric start machine, place right heel on micro switch located on rear of footrest. Ensure that cutter is disengaged, otherwise electric starter motor will not engage. If engine is cold move throttle to cold start position and return to desired throttle setting when engine starts. Do not attempt to operate engine with throttle lever in cold start (choke) position. (Note electric start engines fitted with recoil can be manually started with cutter disengaged and ignition on).

Keep feet and hands clear of mowing attachment when starting and operating machine.

Do not use mowing attachment with broken or bent blades, damaged or worn bolts and nuts or damaged cutter disc, otherwise damage and premature wear will result from vibration. Replace blades, bolts and nuts only in pairs to maintain correct balance.

DO NOT USE WITHOUT WINDROWER

Check all bolts and nuts after first hour of running to ensure trouble free service and adjust engine to clutch belt. (Refer instructions)

Mount and dismount only from left hand side of machine.

Reference to left or right hand side of machine is determined by sitting in the operating position on the machine.

Make sure ignition switch is turned to the off position And Key Removed For Security when machine is not in use.

TO OPERATE

BEFORE STARTING: See Engine Maintenance/Instruction Sheet.

DISENGAGING MOWING ATTACHMENT: The disengaging lever is situated on the right hand side by the steering column. Before starting, disengage mowing attachment by pulling lever fully to the operator. For safety it is advisable at all times, other than when mowing, that the mowing attachment be kept in the disengaged position.

TO DRIVE FORWARD/REVERSE: Power is regulated by the throttle. Set throttle control to desired engine power. Press down on the forward section of the clutch pedal for forward movement, on the rear of the clutch pedal for reverse. The amount of pressure can be used to control the ground speed, especially in heavier conditions.

MANOEUVRING: Owing to the heel and toe type action of the drive pedal, it is possible to take the machine straight from forward to reverse and vice versa. This instant forward and reverse operation makes the machine very manoeuvrable and the sharpest turns can be negotiated easily and quickly.

TO BRAKE (WITH ENGINE RUNNING): The clutch may be used to stop the machine. If travelling forward push the pedal into reverse until machine stops, then bring the pedal back to neutral position or vice versa if travelling in reverse.

TO BRAKE (WITH ENGINE STOPPED): The parking brake only must be used. Otherwise damage to clutch cone will occur. Parking brake is also emergency 'stop' and transport brake.