



Engineered For Life 

CRUISER ZTR

RIDE-ON MOWER

OWNER/OPERATOR'S MANUAL

INCL ILLUSTRATED PARTS LIST

MODEL: A22723K

PRODUCT CODES: CZ24C42 - CZ26C48 - CZ26C52



READ THIS MANUAL BEFORE OPERATING MACHINE

**DEATH, PERSONAL INJURY AND/OR PROPERTY DAMAGE MAY OCCUR UNLESS INSTRUCTIONS IN THIS MANUAL
ARE FOLLOWED**

NOTE: Bring this Manual when Service & or Warranty work is required.

General Information

Thank you for selecting COX as your lawn mowing machine of choice.

This owner's manual is designed to provide comprehensive guidance on safety instructions, assembly requirements, operation instructions, and maintenance procedures to facilitate the proper usage of your machine. Additionally, the manual includes detailed information on adjustment settings and troubleshooting procedures for your convenience.

We strongly recommend that you read this manual thoroughly before engaging in the operation, assembly, or maintenance of the unit. This will not only help in extending the lifespan of your machine but also ensure its optimal performance and efficiency.

Like all mechanical equipment, your COX lawn mower requires regular cleaning and maintenance. It is crucial to adhere to the lubrication guidelines specified in this manual to maintain its condition. If this owner's manual is lost or damaged, we urge you to obtain a replacement copy immediately. Please contact your local COX Dealer or download a copy from our website.

Should you require additional information or guidance, do not hesitate to reach out to your local dealer.

Please note that the illustrations and data in this manual were accurate at the time of printing. However, there may be slight variations in detail due to in-line production changes. The manufacturer retains the right to modify or enhance its products at any time and is not obligated to apply these changes to previously manufactured products.

IMPORTANT

This machine is designed as a ride-on, rotary-blade lawnmower, specifically for use by homeowners in residential settings. Its primary purpose is to cut grass on well-maintained lawns. This machine is not intended for cutting brush, mowing grass, or other vegetation along highways, or for any agricultural purposes.

It is essential to handle this machine with care and attention to safety. Improper use or mistreatment of the machine can lead to serious injury or even death to the operator, as well as potential damage to the machine itself. As the operator, you always bear the responsibility for the safe handling of this machine. Adherence to the safety instructions provided in this manual is imperative to prevent serious injury or damage.

Contents

OWNERS INFORMATION	
MAINTENANCE SCHEDULE	
SPECIFICATIONS	- 1 -
1. SAFETY SYMBOLS	- 2 -
2. SAFETY DECALS	- 2 -
3. SAFETY INFORMATION	- 5 -
3.1. Training	- 5 -
3.2. Preparation	- 5 -
3.3. Fuel Handling Safety	- 5 -
3.4. Operational Safety	- 6 -
3.5. Maintenance Safety	- 7 -
3.6. Storing Safely	- 7 -
4. ASSEMBLY INSTRUCTIONS	- 8 -
4.1. Install Seat	- 8 -
4.2. Install Steering Lever	- 8 -
4.3. Install Discharge Chute	- 8 -
4.4. Service Battery	- 8 -
4.5. Service Engine	- 9 -
5. OPERATION	- 9 -
5.1. Controls And Switches	- 9 -
5.2. Pre-Start Check List	- 11 -
5.3. Mounting And Dismounting the Mower	- 12 -
5.4. Starting The Engine	- 12 -
5.5. Cold Weather Starting Tips	- 13 -
5.6. Steering Lever Operation	- 13 -
5.7. Mowing	- 16 -
5.8. Uneven Terrain	- 16 -
5.9. Stopping The Engine	- 17 -
5.10. Transporting Machine	- 17 -
5.11. Loading Machine	- 18 -
5.12. Storing Safely	- 18 -
6. MAINTENANCE	- 18 -
6.1. Check Engine Oil Level	- 18 -
6.2. Lubrication	- 19 -
6.3. Capacities	- 19 -
6.4. Tyre Air Pressure	- 19 -
6.5. Crankcase Oil and Air Filter	- 19 -
6.6. Battery Maintenance	- 20 -

6.7. Deck Cleaning.....	- 20 -
6.8. Blade Inspection.....	- 20 -
6.9. Replace Blade.....	- 21 -
7. AJUSTMENT.....	- 21 -
7.1. Cutting Height Adjustment.....	- 21 -
7.2. Deck Leveling Adjustment.....	- 22 -
7.3. Deck Belt Adjustment.....	- 22 -
7.4. Dump Drive Belt Adjustment.....	- 23 -
7.5. Neutral Adjustment.....	- 23 -
7.6. Seat Adjustment.....	- 24 -
7.7. Parking Brake Adjustment.....	- 24 -
8. TROUBLESHOOTING.....	- 24 -
9. ILLUSTRATED PARTS LIST (IPL).....	- 28 -
9.1. Mower Assembly.....	- 28 -
9.2. Chassis Assembly.....	- 29 -
9.3. Hydrostatic Transaxle/Wheel Assembly.....	- 31 -
9.4. Steering Assembly.....	- 33 -
9.5. Deck Carrier Assembly.....	- 35 -
9.6. Seat Assembly.....	- 37 -
9.7. Fuel Tank Assembly.....	- 39 -
9.8. Pedal Assembly.....	- 41 -
9.9. Rear Shildd Assembly.....	- 42 -
9.10. Engine Assembly.....	- 43 -
9.11. 42" Mower Decks Assembly.....	- 51 -
9.12. 48" & 52" Mower Decks Assembly.....	- 54 -
9.13. Electrical Assembly.....	- 57 -
9.14. Rops Assembly.....	- 59 -
9.15. Decals Assembly.....	- 61 -



COX INDUSTRIES MOWER WARRANTY POLICY

DEFINITIONS:

"Commercial Use" means all uses other than Domestic use, including any use that is income producing, rental, or is in relation to use in schools, by government departments or charity operators.

"Cox Industries" means Cox Industries (Australia) Pty Ltd ACN 050 991 038.

"Dealer" means an authorised Cox Industries dealer a list of which can be found on our website: www.coxmowers.com.au

"Domestic Use" means use for a personal, residential or household (property) purpose.

"Mower" means any ride-on mower manufactured by Cox Industries.

"Parts" means all parts that can be found in a Mower.

"Warranty Period" means:

for Domestic Use, a period of five (5) years (*conditions apply) or standard (2) years; or

for Commercial Use, a period of one (1) year (*conditions apply) or standard (6) months, from the original date of purchase.

NEW MOWER:

Our goods come with guarantees that cannot be excluded under the Australian Consumer Law. You are entitled to a replacement or refund for a major failure and compensation for any other reasonably foreseeable loss or damage. You are also entitled to have the goods repaired or replaced if the goods fail to be of acceptable quality and the failure does not amount to a major failure.

Nothing in this Warranty purports to modify or exclude the conditions, warranties and undertakings, and other legal rights, under the Australian Consumer Law. This Warranty gives you additional protection for your Mower, and identifies a preferred approach to resolving warranty claims which will be quickest and simplest for all parties, subject to the exclusions, terms and conditions below.

WARRANTY PERIOD:

Cox Industries warrants in respect of each new Mower sold that, subject to the exclusions below, for the Warranty Period Cox Industries or a Dealer will repair or replace free of charge any Parts found to be defective in materials or workmanship under normal use and operating conditions. Other than for major failure, it is at Cox Industries sole discretion as to whether the Mower or Part is repaired or replaced.

The engine, battery, elect clutch/park brake and transaxle are warranted by their manufacturers and are not covered by the Cox Domestic Use five (5) year and Cox Commercial Use one (1) year warranty.

***For our COX Domestic Use five (5) year and Cox Commercial Use one (1) year warranty to remain valid, we require the following:-**

1. The COX online warranty registration form is completed within fourteen days from date of purchase.
2. The mower receives an initial service by an authorised COX dealer at around 5 hours, or 1 month from date of purchase. At every 100 hours or annually, which ever is sooner, the mower is to be serviced by an authorised COX dealer and the service times/dates are recorded by the COX servicing Dealer in the service log included within the COX website.
3. (Periodically additional maintenance is required to be carried out by a COX servicing dealer or the Owner/Operators as per Owner/Operators Manual Maintenance Schedule).
4. For clarity, general wear and tear and user neglect are not covered under our warranty provisions.

MOWER PARTS INSTALLED DURING NEW MOWER WARRANTY PERIOD:

Warranty coverage for Parts installed during the new Mower Warranty Period shall consist of the remainder of the new mower Warranty Period or ninety (90) days, which ever is greater, provided the installation is performed by an authorised Dealer.

TO CLAIM THE WARRANTY:

To make a claim under this Warranty, please bring or send the Mower to an authorised Dealer with a copy of your proof of purchase of the Mower. A claim under this Warranty is not formally made unless and until that proof of purchase is provided. This does not detract from your statutory rights.

WARRANTY REGISTRATION:

The online warranty registration form must be completed within 14 days of purchase. It is the purchasers responsibility to ensure this is carried out.

This Warranty is transferable to a subsequent owner of a Mower, in the event of the sale of that product, provided that Cox Industries is informed in writing within a reasonable time of the sale of the subsequent owner's name and contact details, such notice to be provided to Cox Industries.

The notice should identify the name of the previous owner of the Mower, place and date of purchase, model, make and serial number of the Mower. The effective transfer of this Warranty does not otherwise alter the terms of this Warranty in any way.

WARRANTY EXCLUSIONS:

This Warranty does not cover:

1. the costs of rental of another machine or related equipment while repairs are in progress;
2. telephone, facsimile or other related communication expenses.
3. transportation and insurance charges during transportation of failed Mower or any part thereof;
4. the labour, parts, mechanical adjustments or lubricant costs which, in the judgement of Cox Industries or their Dealer, should have been made as standard maintenance according to the Cox Industries maintenance schedule;
5. the replacement of or service costs relating to replacing and maintaining consumable parts which have ceased working through normal wear and tear such as, but not limited to, normal maintenance parts such as mower discs, blades, bolts and nuts, vee belts, bearings, chains, clutch cones and friction discs;
6. any damage or defect caused by alteration, modification, fitment of a non-genuine part or attachment not approved by Cox Industries or repair, modification or work carried out on the Mower other than by a Dealer;
7. any defect caused by misuse, negligence, accidents or failure to carry out proper maintenance procedures;
8. damage caused by continued operation of the machine after it is known to be defective;
9. any other expenses incurred by the consumer in making the warranty claim;
10. damage caused by incorrect or improper operation (including racing or similar activities), maintenance or not following the instructions or maintenance requirements of the Mower in accordance with the instructions provided with the Mower;
11. damage caused by failure to clean or improper cleaning of the product;
12. damage caused by adverse external conditions such as thunderstorm activity, acts of God, acts of terrorism, damage caused by vermin, or any other act or circumstance beyond Cox Industries' control; or
13. Damage caused by exposure to excessive heat, moisture or dampness, or exposure to abnormally corrosive conditions.

For the avoidance of any doubt, any and all warranties or conditions which are not guaranteed under the Australian Consumer Law or the Australian Competition and Consumer Regulations 2010 and which are not expressly included in this Warranty as additional warranties or conditions are excluded.

To the extent applicable by law, Cox Industries will not accept liability for costs of labour, postage, cartage or delivery to replace faulty materials or parts, or for any loss, damage or accident directly, indirectly, or consequently suffered by the purchaser, operator or any other person or property as a result of such faults whether due to defective materials or workmanship or otherwise.

OWNERS INFORMATION

MACHINE MODEL NO. _____

SERIAL NO: _____

Located on The Front Frame

ENGINE NO.: _____

(As applicable) Located on Engine refer Engine Owner Manual

DATE OF PURCHASE: _____

OWNERS NAME: _____

ADDRESS: _____

TOWN/CITY: _____ **STATE:** _____

**AUTHORISED COX
DEALER/DISTRIBUTOR:** _____

ADDRESS: _____

TOWN/CITY: _____ **STATE:** _____

PRE DELIVERY CHECK LIST

Check parts **Assemble** **Service** **Instruction**

ALWAYS KEEP THIS MANUAL IN A SAFE PLACE.

We are proud that you have purchased a Cox ZTR and urge you to follow these instructions to obtain the maximum life for your machine. If in doubt check with your Dealer.

MAINTENANCE SCHEDULE

BEFORE EACH USE

Check engine oil level, adjust if required
Check engine air cleaner foam pre-cleaner, service if required.
Check engine rotating screen/finger guard, clean if required.
Check operation of safety switches, service if required

Check tyre pressures, adjust if required
Check for loose fasteners, tighten if required.
Check cutting attachment cutter blades, bolts, nuts, housing and guards for wear or damage, replace if required

BEFORE STORAGE

Change engine oil - Clean machine - Lubricate as per required

EVERY 5 HOURS

Check engine oil level, adjust if required
Check engine air cleaner foam pre-cleaner, service if req.
Check engine rotating screen/finger guard, clean if required.
Check operation of safety switches, service if required.
Check tyre pressures, adjust if required

Check for loose fasteners, tighten if required.
Check cutting attachment cutter blades, bolts, nuts, housing and guards for wear or damage, replace if required.

*Service more often under dusty conditions, or where air borne debris is present

DATE / / HOURS..... CUSTOMER/DEALER.....

1 MONTH OR 5 HOURS which ever occurs first

Change engine oil
Check engine air cleaner foam pre-cleaner , service if required
Check engine rotating screen/finger guard, clean if required
Check operation of safety switches, service if required
Check tyre pressures, adjust if required

Check mowing attachment cutter blades, bolts, nuts, housing, and guards for damage, replace if required
Check drive levers, adjust if required.
Check for loose fasteners, tighten if required

*Service more often under dusty conditions, or where air borne debris is present

DATE / / HOURS..... CUSTOMER/DEALER.....

3 MONTH OR 25 HOURS which ever occurs first

Change engine oil if operating under heavy load or high ambient temperature.
Check engine air cleaner foam pre-cleaner, service if required *
Check engine rotating screen/finger guard, clean if required *
Check operation of safety switches and replace if required

Check tyre pressures, adjust if required.
Check mowing attachment cutter blades, bolts, nuts, housing and guards for wear or damage, replace if required
Check for loose fasteners, tighten if required

*Service more often under dusty conditions, or where air borne debris is present

DATE / / HOURS..... CUSTOMER/DEALER.....

6 MONTH OR 50 HOURS which ever occurs first

Change engine oil if operating under heavy load or high ambient temperature.
Check engine air cleaner foam pre-cleaner, service if required *
Check engine rotating screen/finger guard, clean if required *
Check operation of safety switches and replace if required.
Check tyre pressures, adjust if required

Check mowing attachment cutter blades, bolts, nuts, disc/s, housing ,and guards for wear or damage, replace if required
Check for loose fasteners, tighten if required

*Service more often under dusty conditions, or where air borne debris is present

DATE / / HOURS..... CUSTOMER/DEALER.....

9 MONTHS OR 75 HOURS which ever occurs first

Change engine oil if operating under heavy load or high ambient temperature.
Check engine air cleaner foam pre-cleaner, service if required *
Check engine rotating screen/finger guard, clean if required *
Check operation of safety switches and replace if required.
Check tyre pressures, adjust if required.

Check mowing attachment cutter blades, bolts, nuts, housing and guards for wear or damage, replace if required
Check for loose fasteners, tighten if required.
Check drive lever for smooth action, adjust if required.

*Service more often under dusty conditions, or where air borne debris is present

DATE / / HOURS.....CUSTOMER/DEALER.....

12 MONTHS OR 100 HOURS which ever occurs first

Change engine oil filter
Change engine oil
Check engine spark plug, clean, adjust, or replace if required
If fitted clean engine exhaust spark arrestor
Check engine air cleaner foam pre-cleaner , service if required *
Check engine air cleaner cartridge, service if required*
Clean engine cooling system*
Replace in-line fuel filter

Check for loose fasteners, tighten if required
Check operation of safety switches, service if required
Check tyre pressures, adjust if required
Check mowing attachment cutter blades, bolts, nuts, housing and guards for wear or damage, replace if required
Check drive lever for smooth action, adjust if required.
Re-tension rear wheel retaining nut/s
Check belts for wear or damage, replace if required

*Service more often under dusty conditions, or where air borne debris is present

DATE / / HOURS..... CUSTOMER/DEALER.....

15 MONTHS OR 125 HOURS which ever occurs first

Change engine oil if operating under heavy load or high ambient temperature.
Check engine air cleaner foam pre-cleaner, service if required *
Check engine rotating screen/finger guard, clean if required *
Check operation of safety switches and replace if required.
Check tyre pressures, adjust if required

Check mowing attachment cutter blades, bolts, nuts, housing and guards for wear or damage, replace if required
Check for loose fasteners, tighten if required
Check belts for wear or damage, replace if required

*Service more often under dusty conditions, or where air borne debris is present

DATE / / HOURS..... CUSTOMER/DEALER.....

18 MONTHS OR 150 HOURS which ever occurs first

Change engine oil
If fitted clean engine exhaust spark arrestor
Check engine air cleaner foam pre-cleaner, service if required *
Check engine rotating screen/finger guard, clean if required *
Check operation of safety switches, service if required.
Check tyre pressures, adjust if required.

Check mowing attachment cutter blades, bolts, nuts, housing and guards for wear or damage, replace if required
Check belts for wear or damage, replace if required
Check drive lever for smooth action, adjust if required
Check for loose fasteners, tighten if required

*Service more often under dusty conditions, or where air borne debris is present

DATE / / HOURS..... CUSTOMER/DEALER.....

21 MONTHS OR 175 HOURS which ever occurs first

Change engine oil if operating under heavy load or high ambient temperature.
Check engine air cleaner foam pre-cleaner, service if required *
Check engine rotating screen/finger guard, clean if required *
Check operation of safety switches and replace if required

Check tyre pressures, adjust if required.
Check mowing attachment cutter blades, bolts, nuts, housing and guards for wear or damage, replace if required.
Check for loose fasteners, tighten if required

*Service more often under dusty conditions, or where air borne debris is present

DATE / / HOURS..... CUSTOMER/DEALER.....

24 MONTHS OR 200 HOURS which ever occurs first

Replace engine oil filter
Change engine oil
Check engine spark plug, clean, adjust, or replace if required
If fitted clean engine exhaust spark arrestor
Check engine air cleaner foam pre-cleaner , service if required *
Check engine air cleaner cartridge, service if required
Clean engine cooling system*

Check operation of safety switches, service if required
Check tyre pressures, adjust if required
Check mowing attachment cutter blades, bolts, nuts, housing and guards for wear or damage, replace if required
Check belts for wear or damage, replace if required
Check drive lever for smooth action, adjust if required
Check for loose fasteners, tighten if required

*Service more often under dusty conditions, or where air borne debris is present

DATE / / HOURS..... CUSTOMER/DEALER.....

27 MONTHS OR 225 HOURS which ever occurs first

Change engine oil if operating under heavy load or high ambient temperature
Check engine air cleaner foam pre-cleaner, service if required *
Check engine rotating screen/finger guard, clean if required *
Check operation of safety switches and replace if required

Check tyre pressures, adjust if required
Check mowing attachment cutter blades, bolts, nuts, housing and guards for wear or damage, replace if required
Check for loose fasteners, tighten if required

*Service more often under dusty conditions, or where air borne debris is present

DATE / / HOURS..... CUSTOMER/DEALER.....

30 MONTHS OR 250 HOURS which ever occurs first

Change engine oil
If fitted clean engine exhaust spark arrestor
Check engine air cleaner foam pre-cleaner , service if required *
Check engine rotating screen/finger guard , clean if required *
Check operation of safety switches, service if required
Check tyre pressures, adjust if required
Check mowing attachment cutter blades, bolts, nuts, housing and

guards for wear or damage, replace if required
Check belts for wear or damage, replace if required
Check drive lever for smooth action, adjust if required
Check for loose fasteners, tighten if required

*Service more often under dusty conditions, or where air borne debris is present

DATE / / HOURS..... CUSTOMER/DEALER.....

33 MONTHS OR 275 HOURS which ever occurs first

Change engine oil if operating under heavy load or high ambient temperature.
Check engine air cleaner foam pre-cleaner, service if required *
Check engine rotating screen/finger guard, clean if required *
Check operation of safety switches and replace if required

Check tyre pressures, adjust if required
Check mowing attachment cutter blades, bolts, nuts, housing and guards for wear or damage, replace if required
Check for loose fasteners, tighten if required

*Service more often under dusty conditions, or where air borne debris is present

DATE / / HOURS..... CUSTOMER/DEALER.....

36 MONTHS OR 300 HOURS which ever occurs first

Replace engine oil filter
Change engine oil
Check engine spark plug, clean, adjust, or replace if required
If fitted clean engine exhaust spark arrestor
Check engine air cleaner foam pre-cleaner, service if required *
Check engine air cleaner cartridge, service if required
Clean engine cooling system*
Check operation of safety switches, service if required

Check tyre pressures, adjust if required
Check mowing attachment cutter blades, bolts, nuts, housing and guards for wear or damage, replace if required
Check belts for wear or damage, replace if required
Check drive lever for smooth action, adjust if required
Check for loose fasteners, tighten if required

*Service more often under dusty conditions, or where air borne debris is present

DATE / / HOURS..... CUSTOMER/DEALER.....

SPECIFICATIONS

Product Code	CZ24C42	CZ26C48	CZ26C52
Engine			
Engine Type	COX POWER	COXPOWER	
Model No.	VP680S	VP750S	
Horsepower (G.I.H.P.)	14.5kw	18kw	
Displacement	679cc.	750cc	
No-load r.p.m.	3600rpm	3600rpm	
Charging System	12VDC 12.5 amp. negative ground		
Starter	Electric		
Electrical System	Safety interlocked		
Deck Drive	Electric clutch		
Drive Type	Hydro-Gear ZT3100 (Serviceable)		
Steering	Dual levers independently control speed and direction of travel. Zero turning radius		
Speed			
Forward (variable)	0-13.6 km/h		
Backward (variable)	0 - 9 km/h		
Fuel Tank Capacity	30.5 L		
Tyre Sizes			
Rear Wheels	20×8.0—8	20 x 10.0 - 8	20 x 10.0 - 8
Front Wheels	13×5—6		
Dimensions of Tractor			
Seat Back Height	47.2" (1.2 m)		
Seat Cushion Height	30.3" (0.7m)		
Tractor Width (No Discharge Chute)	1.08m	1.24m	1.34m
Tractor Length	77.55" (1.97m)		
Wheel Base	48.22" (1.225 m)		
Weight - Uncrated	355Kg	370 kg	373kg
Weight - Crated	405Kg	421 kg	424kg
Cutting			
Cutting Height	25-102mm (13 position)		
Cutting Width	42"	48"	52"
Spindle	2	3	3

1. SAFETY SYMBOLS



This SAFETY ALERT SYMBOL is used both in this manual and on the machine to alert you to crucial safety messages. Adherence to these messages is essential to prevent accidents. This symbol signifies: **ATTENTION! BECOME ALERT!**

The safety alert symbol indicates potential danger and is accompanied by one of the following words: **DANGER, WARNING, or CAUTION.**

DANGER:

Failure to heed these safety instructions **WILL** result in death or serious injury.

WARNING:

Ignoring these safety instructions **COULD** result in death or serious injury.

CAUTION:

Neglecting these safety instructions **MAY led** to minor or moderate injury.

2. SAFETY DECALS

- All DANGER, WARNING, CAUTION and instructional messages on your machine must be read and followed carefully. Personal injury can occur if these instructions are disregarded. This information is crucial for your safety!
- Keep all safety decals legible. Remove grease, dirt, and debris from safety decals and instructional labels.
- Replace safety decals immediately if they are missing or illegible.
- When installing new components, ensure that current safety decals are affixed to the replaced parts.
- Obtain new safety decals from your authorized equipment dealer or distributor if needed.
- Familiarize yourself with the safety decals and instruction labels provided below. They are vital for the safe operation of your machine.



94.6069410
On The CHUTE



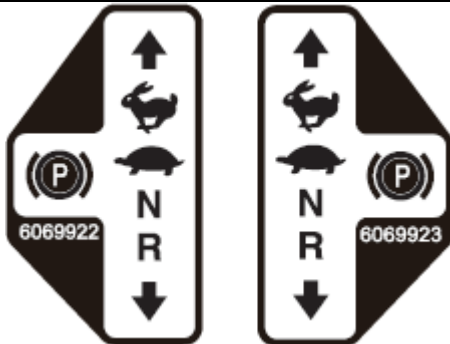
94.6069750 94.6069760
Behind The Rear Wheel, LH & RH



94.6069450
Besides The Belt Shields, LH & RH



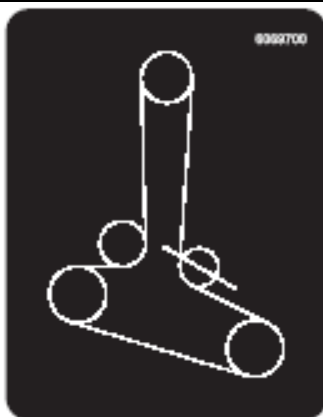
94.6069927
Console



94.6069922 94.6069923
On The Front Fender, LH & RH



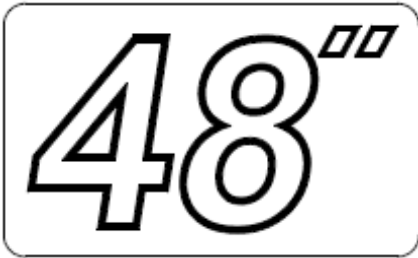
94.6069430
Rear Shield, LH&RH



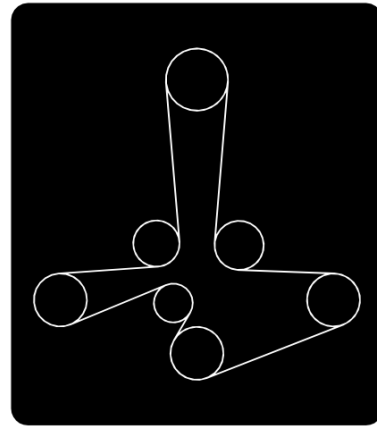
94.6069700
On the mower deck,42"



94.6069730
On The Front Of Deck,42"



94.6069890
Front Of Deck,48"



94.6060985
On the mower deck,48"&52"



94.6069560
Front Of Deck,52"



94.6069680
On The Tank



94.6069420
Besides The Belt Shields, LH&RH



94.6051016
Besides The Left Tank



94.6051017
Besides The Right Tank



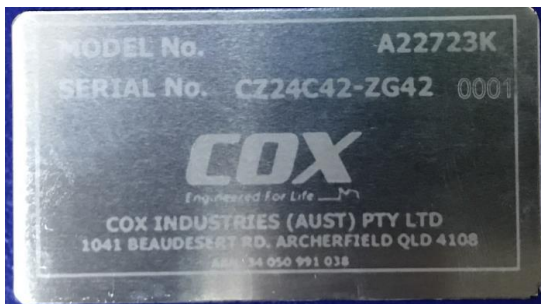
94.6051018
On The Front Frame



94.6051019
On The Front Fender



94.6061001
On The Console



94.6051021
In front, right under the seat

3. SAFETY INFORMATION



The safe operation of this machine is dependent on it being operated as outlined in this manual. Read the manual thoroughly before use and ensure operators are well-versed in the safety rules.

3.1. Training

- Regard the machine as a piece of power equipment, so any person who operates the machine **MUST** be trained and capable of the safe operation of the equipment and controls.
- Know your controls and how to stop the machine, engine, and mower deck in an emergency.
- To avoid accident or injury, **DO NOT** allow anyone to operate this machine without reading the instructions.
- Never allow young children, or

unqualified individuals to operate the equipment.

- Keep young children and pets away from the zone of operation to avoid accidents or hazards to other people or their property.

3.2. Preparation

- While mowing, always wear tight belted clothing. Wear protected footwear. Never operate the machine in bare feet, open toed footwear.
- Walk around machine and visually inspect for damaged, loose, or missing components. **DO NOT** operate unless all components are properly installed, adjusted and in good working condition.
- Make sure all safety switches function properly. See Operation section for details.
- Make sure all safety shielding is in good condition and properly installed.
- Check brake action before you operate. Adjust or check brakes as required.
- Make sure all safety decals are installed and in good condition.
- Remove accumulated debris from machine to avoid fire hazard.
- Thoroughly inspect areas to be cut and remove stones, branches, wires, and accumulated debris that might be thrown causing personal injury or damage.
- Evaluate the terrain to determine what accessories and attachments are needed to perform the job properly and safely.
- Never permit any person, besides the operator, to ride or operate the mower at any time.
- Operate only in daylight or good artificial light.

3.3. Fuel Handling Safety

- In certain conditions, gasoline is extremely flammable and highly explosive. A fire or explosion from

gasoline can burn you and others and can damage property.

- Fill the fuel tank outdoors, in an open area, when the engine is cold. Wipe up any spill gasoline.
- DO NOT fill the fuel tank completely full. Add gasoline to the fuel tank until the level of the filler neck. This empty space in the tank allows gasoline to expand.
- Never smoke when handling gasoline and keep away from open flames or where gasoline fumes may be ignited by a spark.
- Store gasoline in an approved container and keep it out of the reach of children. Never buy more than a 30-day supply of gasoline.
- Always place gasoline containers on the ground away from your vehicle before filling.
- Avoid filling gasoline containers inside vehicles or on truck/trailer beds with insulating materials. When refueling on a truck or trailer, use a portable container if possible.
- When you can, take gas-powered equipment off the truck or trailer and refuel it with its wheels on the ground.
- If removing the equipment isn't possible, refuel it on the truck or trailer using a portable container instead of a gasoline dispenser nozzle.
- If a gasoline dispenser nozzle must be used, keep the nozzle in contact with the rim of the fuel tank or container always opening until fueling is complete.
- Never use cellular phones or other portable electronic devices when handling fuel.

3. 4. **Operational Safety**

- Read the "Operation" section of this manual before use.
- Fenders serve as shields. DO NOT operate without them.
- DO NOT drive machine without mower

deck installed. The proper stability of the machine depends on the weight of the mower deck.

- Keep bystanders away from equipment whilst it is in operation.
- Keep children and pets a safe distance. Never directly discharge towards a person.
- Start engine from operator's seat after disengaging PTO and placing steering levers into the swing-out (neutral lock) position.
- Keep hands and feet away from underneath mower deck while engine is running. Keep clear of all moving parts on machine.
- Wear suitable hearing protection devices to protect engine noise.
- DO NOT operate in the backwards unless necessary and ensure the area behind you is clear and safe.
- DO NOT move steering levers from forward to backward or backward to forward position rapidly. The sudden direction change may cause loss of control.
- DO NOT operate on steep slopes greater than 15 degrees.
- DO NOT stop, start, or change directions suddenly on slopes.
- Use extra care and maintain minimum ground speed when traveling or operating on a slope, over rough ground, or when operating close to ditches and fences.
- Keep alert for holes, rocks, roots and other hidden hazards in the terrain. Keep away from drop-offs and soft embankments.
- Stop machine and mower deck immediately while striking an obstruction or hard object. Turn engine off, inspect machine and mower deck. Repair any damage before resuming operation.

- Disengage PTO, stop engine, select park brake, remove key, and wait for all movement to stop before dismounting, adjusting, cleaning, or unclogging the machine.
- Never transport mower with blades running. Disengage PTO before crossing streets, sidewalks, driveways, etc.
- Watch for traffic when operating near or crossing roadways.
- This machine is not equipped for highway use, especially when safety lighting and marking is required. It is NOT a recreational vehicle.
- This unit is not equipped with a drawbar. DO NOT pull loads.
- Take all possible precautions when the machine is unattended: disengage PTO, lower mower deck, place steering levers in neutral, set parking brake, stop engine, and remove key from ignition.
- Never carry passengers.
- DO NOT run the engine in an enclosed area without adequate ventilation. Exhaust gases contain carbon monoxide, which is an odorless and deadly poison.

3. 5. **Maintenance Safety**

- Always undertake maintenance with the machine parked on a hard level surface; with the engine stopped and the PTO disengaged; with the park brake set; and with the key removed from the ignition.
- Always disconnect the grounded (-) battery clamp when working on the engine, clutch, or electrical systems.
- Always wear tight fitting clothing and safety equipment when performing maintenance. Keep the work area clean and dry.
- Never work under the machine without jack stands or other equivalent safety blocks. DO NOT depend solely on mechanical or hydraulic jacks or lifts for

support. Always use adequate wheel chocks on tyres remaining on the ground.

- If running the engine in an enclosed area, use an exhaust pipe extension to remove gases. Alternatively, work near open doors and windows.
- Waste products such as used oil, fuel, and batteries can harm the environment and people. Dispose of waste products properly.
- Never attempt to disconnect or alter any part of the safety interlock systems.
- DO NOT change engine governor settings.
- Keep engine free of grass, leaves, or excess grease to reduce fire hazard and minimize engine overheating.
- Keep the machine and mower deck in good operating condition and all safety devices in proper place.
- Periodically tighten all bolts, nuts, and screws. Check that all locking pins are properly installed and in good condition.
- Check brake operation frequently. Adjust and service as required.

3. 6. **Storing Safely**

- Never store the machine with gasoline in the tank inside buildings where fumes could reach flames or sparks.
- For long-term storage (30 days or more), add a fuel stabilizer to the gasoline. Follow the stabilizer's mix ratio and run the engine for 10 minutes to ensure it reaches the carburetor.
- If draining the fuel tank, do so outdoors into an approved container, away from open flames.
- Always provide adequate ventilation when running the engine indoors. Exhaust gases contain carbon monoxide, which is an odorless and deadly poison.
- Remove all accumulated debris from mower deck and tractor.

- Sand areas where paint is chipped and repaired to prevent rust. Lubricate all locations to prevent moisture damage during storage.

4. ASSEMBLY INSTRUCTIONS

4.1. Install Seat

Locate and align the seat with the seat pan (Refer to Figure 4), torque all the nuts until the seat is snug.

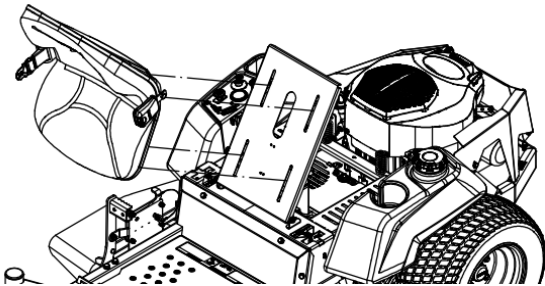


Figure 4

4.2. Install Steering Lever

- Loosen and remove the two bolts and springs which attach to the control arm shaft.
- Place the lever on the outside of the control arm shaft and secure with bolts and washers (Refer to Figure 5), tighten until snug. Repeat on opposite side of unit.

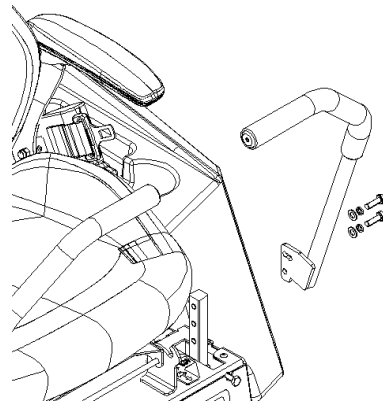
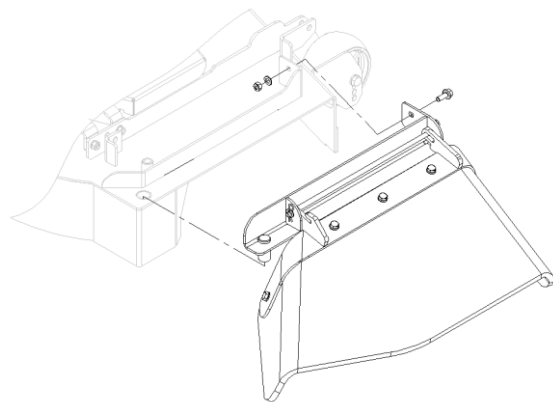


Figure 5

- **NOTE:** There are two lever height options available. Place the levers in the first and the second hole (from the top) to increase height of the levers, or in the second and the third hole (from the top) to decrease the height of the levers.

4.3. Install Discharge Chute

Locate the discharge to the mower deck (Refer to Figure 6) and tighten knob until chute is snug.



42 48 52 Fab Deck

Figure 6

4.4. Service Battery



Charging the battery may produce explosive gases that can explode causing serious injury. Keep sparks, flames, or cigarettes away from battery.

- Remove seat to gain access to the battery.
- Refer to Table 1 below to find the

corresponding voltage of your battery and the recommended charging time. Charge the battery until it reaches a full charge of 12.6 volts or greater.

The battery charger used should have an output of 16 volts and 7 amps or less. Using a charger with higher output can cause damage to the battery.

IMPORTANT:

Ensure that the negative and positive battery cables are correctly connected.

Table 1			
Voltage Reading	Percent Charge	Maximum Charger settings	Charging Interval
12.6 or greater	100%	16Volts/7 amps	No charging Required
12.4-12.6	75%-100%	16Volts/7 amps	30 Minutes
12.2-12.4	50%-75%	16Volts/7 amps	1 Hour
12.0-12.2	25%-50%	14.4Volts/4 amps	2 Hours
11.7-12.0	0-25%	14.4Volts/4 amps	3 Hours
11.7 or less	0%	14.4Volts/4 amps	6 Hours or more

- Connecting the negative battery cables:

Note: If the positive cable is also disconnected, connect the positive (red) cable to the positive battery terminal first, then the negative (black) cable to the negative battery terminal. Slip insulator boot over the positive terminal.

Note: If time does not permit charging the battery, or if charging equipment is not available, connect the negative battery cables and run the vehicle continuously for 20 to 30 minutes to sufficiently charge the battery.



- Battery contains sulfuric acid, avoids contact, and always shields eyes, face, skin and clothing from battery, cigarettes. Flames or sparks could cause battery to explode.
- DO NOT charge or use booster cables or adjust post connection without proper training.
- If battery acid encounters skin or eyes, then flush with water and call a physician

- immediately.
- Keep out of reach of children.

4. 5. Service Engine

The engine is shipped with oil, check oil lever and if necessary, fill to the appropriate lever.

5. OPERATION

The safe operation of this machine is the responsibility of the operator. Any person who operates the machine MUST be instructed in and capable of the safe operation of the machine and all controls. Read all safety information on pages 5 through 8.

5. 1. Controls And Switches

Know your controls and how to stop the machine, engine, and mower deck quickly in an emergency. DO NOT operate this machine until you are completely familiar with the controls and comfortable with your ability. We recommend you practice in a flat open area at half throttle until you are comfortable with all the controls.

The two **Steering Levers** control speed, motion, and direction of the machine and are located on each side of the seat. The left lever controls flow of hydraulic oil from the left pump to the left drive wheel motor. The right lever controls flow of hydraulic oil from the right pump to the right drive wheel motor. This allows left and right drive wheels to turn independently, which provides the "zero turn" ability. Each lever has two positions: The swung "out" neutral lock position, where the lever will not activate the pump; and the swung "in" operation position, where the lever will activate the pump.

The following controls are located on or beside the Operator's Console which is located to the right side of the seat. Refer to Figure 7.

- The Ignition Switch (A) is the key switch located on the console. The ignition switch is used to start and stop the engine. The switch has three positions OFF, ON and START. Insert the key into the switch and rotate clockwise to the ON position.

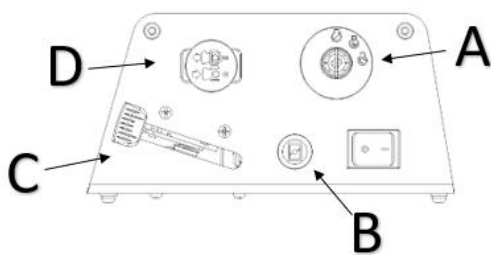


Figure 7

- The Choke Control (B) is the black knob on the console. Choke control is used to aid in starting a cold engine. Put the Choke control up or down to control the opening degree of the engine choke, the higher the knob is, the wider choke will be.

- The Throttle Control (C) is the large black lever located beside the console to the right of the seat. The throttle is used to control engine speed. Move the throttle lever forward to increase engine speed and backward to decrease engine speed.
- The PTO Switch (D) is the red push/pull knob located on the console. Pull PTO knob "up" to engage the electric clutch that drives the belt connected to the mower deck that drives the cutting blades. Push the PTO knob "down" to disengage the electric clutch that stops the blades from turning within a few seconds.
- Hour Meter is connected to the ignition circuit and is provided to record the number of hours the engine runs. If the ignition switch is left on, without the engine running, the hour meter will continue to record. The meter is also connected to the battery and is provided to show the remaining power of the battery.
- When the levers are centered in the T-slot, the drive system is in the neutral position. With levers moved out in the T-slot, the driving system is in the parking brake position. (Refer to Figure 8)

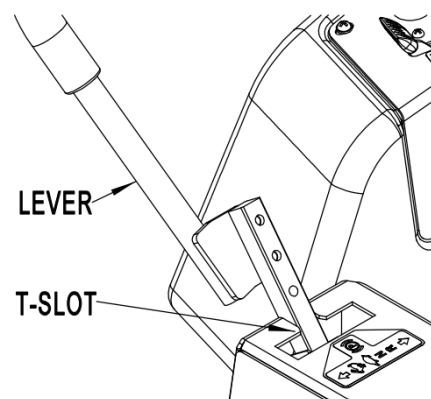


Figure 8

Several Safety Switches are incorporated in this machine's design to prevent the engine from being started in certain conditions and to cease the running engine in certain

conditions. These circuits should be checked before each operation to ensure they are working properly. See **Table 2** for check list on these circuits.

The **Start Circuits** will keep engine from starting unless:

- Both steering levers are swung out in their neutral locked position, and the PTO switch is down in its disengaged position.

The **Kill Circuits** will stop the running engine if:

- The operator comes off the seat any time during operation of the machine with PTO engaged or steering levers in operating position.
- The steering levers are in their operating position and the park brake lever is moved into engaged locked (up) position.

 **WARNING**

DO NOT operate this machine unless all safety systems are working properly as described above.

5. 2. Pre-Start Check List

Maintain desirable operational standards and help ensure the safety of the operator by routinely checking the following daily:

- Walk around the machine and visually check for loose or missing components. Make sure all components are mounted properly and are in good working condition.
- Make sure all fenders, guards and shields are safely and securely attached.
- Make sure the discharge shield or restriction plate is installed at the discharge opening on the mower deck.
- Make sure all safety decals are clearly readable (see page 3 to 5).
- Check hydrostatic transmission fluid level. DO NOT operate a machine with low fluid. Low fluid could cause damage

to transmission and loss of control of the machine.

- Check for oil and fuel leaks.

IMPORTANT

When mowing in dusty conditions, dry grass, or long grass, it may be necessary to frequently clean air intake screen to prevent engine overheating.

- Check air cleaner (refer to "Engine Manual"). When mowing in dusty conditions, dry grass, or long grass, it may be necessary to frequently clean the air cleaner cartridge.
- Make sure the engine is free of dirt and debris.
- Check fuel level. Make sure fuel is enough.

 **DANGER**

DO NOT fill the fuel tank while the engine is running. Allow the engine to cool for two minutes before adding fuel. If fuel is spilled, DO NOT start the engine, and avoid creating a source of ignition until the fuel is wiped clean and evaporated.

- Check tyre pressure (see 6.4). Improper pressure will adversely affect traction, steering and level cutting height.
- Check tyres for damage or cracking.
- Check hydrostatic pump drive belt for damage or cracking.
- Check mower deck belt for damage or cracking.
- Check mower deck level.
- Check to ensure blades are sharp and secure; the cutting edge should be positioned in the direction of blade rotation (clockwise as viewed from top of mower deck).
- Adjust cutting height if necessary.

- Check operation of park brake.
- Remove grass and debris from machine.
- Test safety interlock systems (Refer to Table 2). Perform these tests in a clear open area and keep bystanders away.

If you encounter a **malfunction** during any of these procedures, **cease** operation of the machine immediately. **Consult** your COX dealer for assistance and further instructions.

Table 2

Action	Left Steering Lever	Right Steering Lever	PTO Switch	Parking Brake	Proper Result
Start Circuits					
Try starting engine	Out	Out	Off	On	Engines Cranks
Try starting engine	In	Out	Off	On	Engine will not crank
Try starting engine	Out	In	Off	On	Engine will not crank
Try starting engine	Out	Out	On	On	Engine will not crank
Kill Circuits (with engine running at 1/2 throttle)					
Raise off seat	Out	Out	Off	On	Engine does not stop
Raise off seat	In	Out	Off	Off	Engine Stops
Raise off seat	Out	In	Off	Off	Engine Stops
Raise off seat	Out	Out	On	On	Engine Stops
Move left steering lever in		Out	Off	On	Engine Stops
Move right steering lever in	Out		Off	On	Engine Stops

5. 3. Mounting And Dismounting the

Mower

Always mount and dismount the mower from the left side, with the brake on, the PTO disengaged (down), the engine off, and the steering levers in their swung out (neutral lock) position. Mount the mower by stepping from the ground to the left side of the deck with your right foot, then step over the frame to the footrest with your left foot. Always keep the top of the deck and footrest clean and dry. Wait for all moving parts to stop before dismounting. Dismount the mower by standing up on the footrest, then turn to the left and step from the footrest,

over the frame, to the left side of the deck with your right foot, and then step to the ground with your left foot. The left steering lever can be used to stabilize your movement; however, it is not strong enough to support all your weight. Never leave the mower unattended with the key in the ignition.

5. 4. Starting The Engine



Never start the engine in confined rooms. Exhaust gases contain carbon monoxide, an odorless and deadly poison.

DO NOT allow children to approach the machine while the engine is running.

DO NOT operate the machine around open flames.

DO NOT operate the engine when an odor of fuel is present or other explosive conditions exist.

5.4.1 Position yourself on the tractor seat.

5.4.2 Engage the park brake.

5.4.3 Place both steering levers in neutral lock position.

5.4.4 Place electric clutch switch (PTO) in "OFF (down)" position.

5.4.5 Set the throttle at 1/3 open.

5.4.6 Insert the key into the ignition switch and turn to "ON".

5.4.7 Continue by turning the key to "START". When engine starts release key immediately.

5.4.8 Warm the engine up at medium speed for several minutes.

You will enhance the starter life by using short starting cycles of several seconds. Engaging the starter motor more than 15 seconds per minute can result in damage to starter.

5. 5. Cold Weather Starting Tips

- Use proper viscosity oil for temperature expected (see "Engine Manual").
- Set throttle at half open.
- A warm battery has better starting capacity than a cold one.
- Use fresh winter grade fuel. It is better for winter starting than leftover summer grade fuel.

5. 6. Steering Lever Operation



WARNING

DO NOT move steering levers from forward to backward or backward to forward position rapidly. Sudden direction changes could cause loss of

control or damage to the machine.



CAUTION

Help prevent personal injury. Learn use of the steering levers and practice at half throttle until you become proficient and comfortable with the operation of the machine.

The steering levers control the speed, motion, and direction of the machine. The steering levers have two positions: (1) **Neutral Lock**, where the lever(s) are swung completely outward.

and cannot be moved front and back; (2) **Operating**, where the lever(s) are swung in and can be moved front and back.

Neutral Lock Position:

- Forward and backward movement of the motion control levers is prevented when levers are in the swung out (neutral lock) position. Machine should not move with the steering levers in the swung out (neutral lock) position and the park brake released. If machine does move, see "Neutral Adjustment" section page 23.
- Steering levers must be in the swung out (neutral lock) position to start the engine.
- Steering levers must be in the swung out (neutral lock) position to safely enter and exit the operator seat.

Operators can exit mower with the engine running when the steering levers are in the swung out (neutral lock) position, PTO switch is disengaged, and the park brake is engaged.

Operating Position:

- Machine speed, motion and direction can be controlled when the engine is running, park brake is released, and steering levers are swung in (operating) position.

Neutral:

- When the steering levers are swung in

and centered front and back, they are in operating (neutral). In operating (neutral), the hydrostatic pumps do not deliver fluid to the wheel motors.

Forward and backward Motion (Refer to Figure 9):

- Pushing both levers forward at the same time will move the machine forward.
- Pulling both levers backwards at the same time will move the machine backwards. The further forward or backward the steering levers are moved, the faster the machine will move in that direction.

Turning (Refer to Figure 9):

- While moving forward, turn gently right by pushing the left lever further forward than the right.
- While moving forward, turn gently left by pushing the right lever further forward than the left.
- Make a sharp turn right by pushing the left lever forward and pulling the right lever backward at the same time.
- Make a sharp turn left by pushing the right lever forward and pulling the left lever backward at the same time.
- DO NOT turn the machine by leaving one lever in neutral and moving the other lever. This will cause damage to the turf under the tyre that is not rotating.

Stopping:

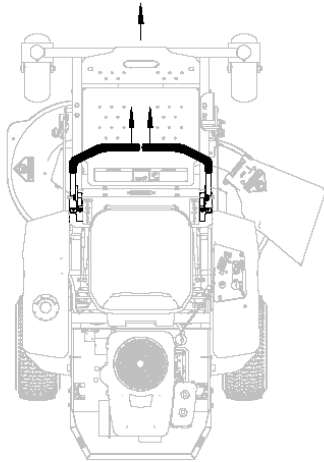
To stop motion, move both steering levers back to neutral. The machine is equipped with springs to automatically return both levers to neutral. If levers DO NOT automatically return to neutral, see your authorized COX dealer for adjustment.

IMPORTANT

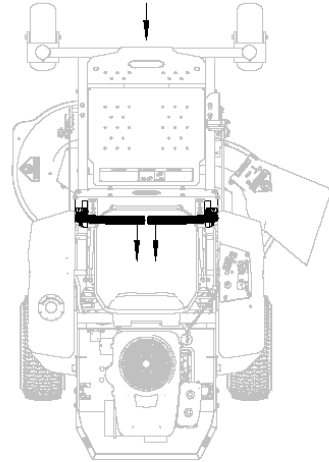
If you become confused during operation, release both steering levers. They will automatically return to the centered neutral position and the machine will stop.

STEERING LEVER OPERATION

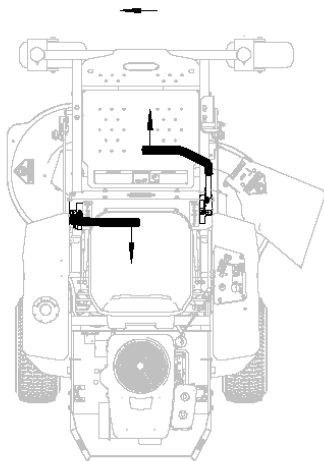
FORWARD



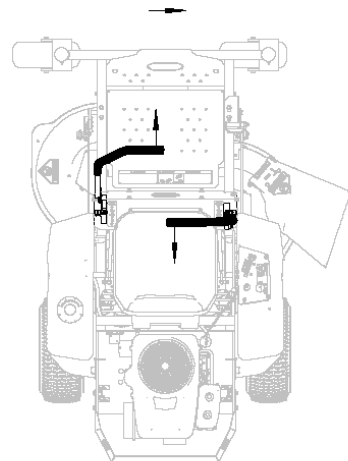
REVERSE



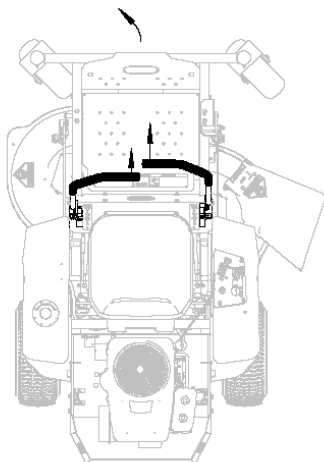
**SHARP
LEFT**



**SHARP
RIGHT**



**GENTLE
LEFT**



**GENTLE
RIGHT**

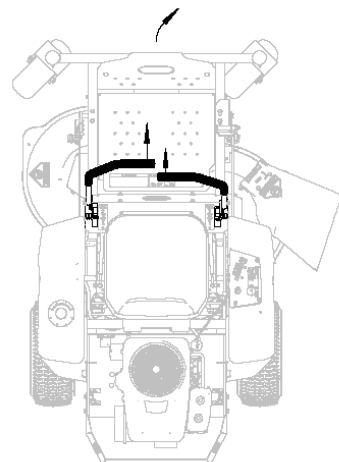


Figure 9

5. 7. Mowing



WARNING

Inspect the area before mowing, picking up all rocks, twigs and other debris. Enter new areas carefully. Cut grass higher for the first time to allow mower to clear unseen objects. Never assume an area is clear, always check!

Clear mowing area when operating mower. Flying objects could injure bystanders.



WARNING

Before starting to machine, position the machine in the area to be mowed with the mower deck set at the desired cutting height. With the engine at half throttle, pull up on the PTO switch knob to start the blades turning. Accelerate to full throttle to begin mowing.



DANGER

To avoid serious injury or death from flying objects or contact with blades, NEVER operate mower without discharge shield or restriction plate installed.

Keep hands and feet away from discharge opening.

Before mowing, inspect the area to determine the best mowing procedure. Consider height, type of grass and terrain type (rolling, level or rough).

Proper ground speed for mowing will depend on the height, type and density of grass to be cut. Normally, ground speed will range from three to six miles per hour. Tall dense

grass should be mowed at a low speed, while thin medium height grass can be cut at a faster ground speed. Always operate engine at full governed RPM when mowing. This is necessary to maintain proper blade speed to produce a clean cut.

Follow local recommendations for suitable cutting height in your area. Avoid mowing grass too short to increase mowing intervals. This may stress the grass during hot weather and encourage weed growth during the growing season.

Mow with uncut grass to the left. This will distribute the clippings over the cut area. Discharging clippings over the uncut area will cause a grass buildup and may prevent uniform cutting.

Remember that sharp blades produce cleaner cuts and use less power.

Extremely tall grass should be mowed twice. Cut grass higher first, then cut the second time at desired height and 90° to the first pass.

5. 8. Uneven Terrain

Be careful when operating mower on uneven ground.

DO NOT operate on steep slopes. Operation on a steep slope could cause loss of control, machine to overturn and personal injury or death.

- DO NOT operate on steep slopes. This machine was not specifically designed to operate on steep slopes.
- The operator is responsible for safe operation on slopes. Only the operator can determine the stability of the mower on a given slope based on existing conditions like machine speed and direction, slope variation, slipperiness, drop-offs, holes, obstacles, etc.
- To determine stability on a slope, start at

the bottom and try to back the mower up the slope slowly. If you cannot back up the slope or if you feel uneasy on it, DO NOT operate on it.

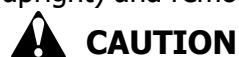
- Always start mowing at the bottom of slopes. Traveling up slopes, this machine has more traction traveling forward than backward. Be careful on slopes to avoid driving forward into a position where there is not enough traction to enable backing out or stopping.
- Tyres may lose traction on slopes even though the brakes are functioning properly.
- Avoid sudden starts and acceleration when traveling forward uphill as mower may tip backwards.
- DO NOT mow slopes when grass is wet because slippery conditions will reduce traction and braking which in turn affects steering.
- Use caution when making turns. Slow the mower down before making sharp turns. Unit can spin very rapidly by positioning one lever too much ahead or behind the other.
- Look around you to be sure the area is clear before turning or backing up.
- Avoid starting or stopping on a slope. If tyres lose traction, disengage the blades, and proceed slowly straight down the slope.
- Keep all movement on slopes slow and gradual. DO NOT make sudden changes in speed or direction.
- Use extra care with grass catchers or other attachments. These can change the stability of the machine. DO NOT use grass catcher on steep slopes.
- Check carefully for overhead clearances such as branches, doorways, or electrical wires, before driving under any objects and DO NOT contact them.
- **The seatbelt must always be worn**

when operating the machine with ROPS. At other times, wearing the seatbelt is at the operator's discretion. **Note: operating the machine with a seatbelt on terrain where a roll over can occur without ROPS can be hazardous.**

5. 9. Stopping The Engine

5.9.1 Set the throttle at 1/3 open. Allow the engine to idle at this setting for several minutes, then move the throttle to slow idle.

5.9.2 Move ignition switch to "OFF" position (upright) and remove key.



Always remove key from ignition switch when leaving unit unattended or when not in use.

5. 10. Transporting Machine



Always back machine onto trailer to avoid accidents/damages.

Use a heavy-duty trailer to transport your machine. Trailer must have signs and lights required by law.

5.10.1 Raise mower deck to the transport (highest) height position so that the transport latch hooks over the catch on the latch tube guide. Place the height adjustment pin in the top (5 inch) hole.

5.10.2 Back machine onto trailer. See "Loading Machine" below.

5.10.3 Stop the engine, engage the park brake and remove the key.

5.10.4 Place the height adjustment pin in the bottom (1 inch) hole and lower the mower deck to the lowest position.

5.10.5 Securely fasten machine to trailer with heavy-duty straps, chains or cables. Both front and rear straps must be directed

down and outward from machine.

5. 11. Loading Machine

WARNING

Loading a machine onto a trailer or truck increases the possibility of backward-tip-over and could cause serious injury or death.

- Use extreme caution when operating a machine on a ramp. Move slowly.
- Avoid sudden acceleration and deceleration when operating a machine on a ramp.
- Back machine up ramp and drive forward down ramp.
- Use only a single, full width ramp; **DO NOT use individual ramps for each side of the machine.**
- If individual ramps must be used, BACK machine up ramp and drive forward down ramp.
- DO NOT exceed a 15-degree angle between ramp and ground or between ramp and trailer or truck.

5. 12. Storing Safely

CAUTION

Never store machine with fuel in the tank inside a building where fumes may reach an open flame, spark, or pilot light as on a furnace, water heater, clothes dryer, or other gas appliance. Allow engine to cool before storing in an enclosure.

CAUTION

Always provide adequate ventilation when running the engine indoors. Exhaust gases contain carbon monoxide, an odorless and deadly poison.

- If the engine is to be unused for 30 days

or more, add a fuel stabilizer to the fuel system. Fuel stabilizer is an acceptable additive in minimizing the formation of fuel gum deposits during storage. Add stabilizer to fuel in fuel tank or storage container. Always follow mix ratio found on stabilizer container. Run engine at least 10 minutes after adding stabilizer.

- Remove all accumulated debris from mower deck and tractor.
- Sand areas where paint is chipped and repainted to prevent rust. Lubricate all locations to prevent moisture damage during storage.

6. MAINTENANCE

CAUTION

Always perform maintenance with the machine parked on a hard level surface; with the engine stopped and the PTO disengaged; with the park brake set; and with the key removed from the ignition.

CAUTION

Always remove the grounded (-) clamp from the battery when performing maintenance on the engine, clutch, or any other electrical system. To access battery, remove the left fender.

CAUTION

Always wear safety glasses and ear protection when performing any maintenance function that could cause injury to eyes or ears.

6. 1. Check Engine Oil Level

Service Interval: Before each use or daily

6.1.1 Stop engine and wait for all moving parts to stop. Make sure unit is on a level

surface.

6.1.2 Check when engine cold.

6.1.3 Clean area around dipstick. Remove the lipstick and wipe oil off. Reinsert the dipstick according to the engine manufacturer's recommendations. Remove the dipstick and read the oil level.

6.1.4 If the oil level is low, wipe off the area around the oil fill cap, remove cap and fill to the "FULL" mark on the dipstick. DO NOT overfill.

Important:

DO NOT operate the engine with the oil level below the "ADD" mark on the dipstick, or over the "FULL" mark.

6. 2. Lubrication

DO NOT let excess grease collect on or around parts, particularly when operating in sandy areas. See accompanying illustrations (Figure 10 and Figure 11) for the lubrication frequency points.

In addition to these lubrication points, lightly oil all linkage pivot points.

Be sure to clean the fitting thoroughly before using a grease gun.

Apply 4 Strokes

Every 40 Hours of Usage

Mower Blade spindles (A)and(B)

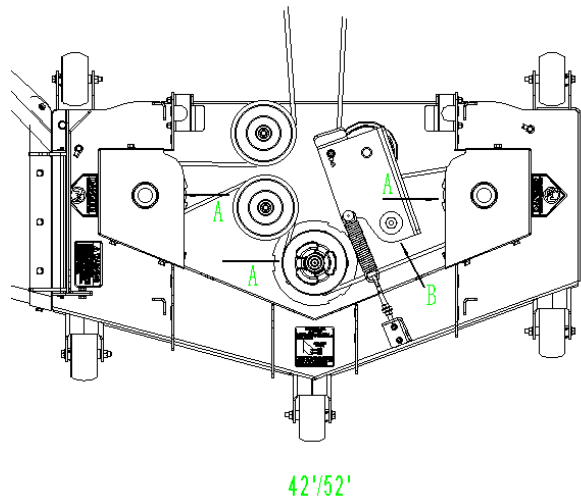
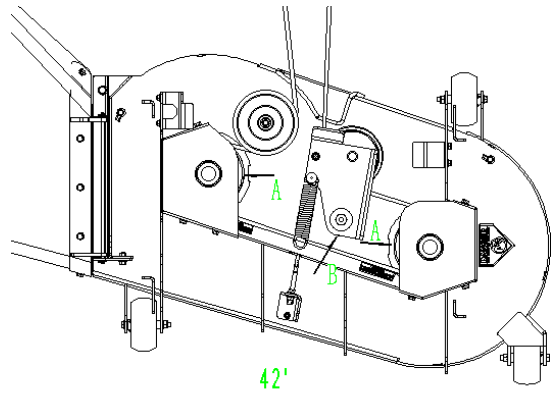


Figure 10

Apply 1/2 To 1 Stroke
Every 100 Hours/Monthly of Usage
Front Wheel Bearing(A)

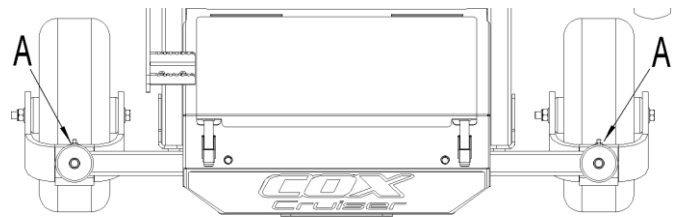


Figure 11

6. 3. Capacities

Fuel Tank... 30.5 L

6. 4. Tyre Air Pressure

Drive Tyres 15 psi (51.8kPa)

6. 5. Crankcase Oil and Air Filter

Refer to the "Engine Manual" for the timetable for changing or service.

 **CAUTION**

DO NOT use high-pressure water or steam to clean the engine or drive compartment. Water and cleaning detergent may damage electrical components and terminals, possibly leading to component and safety circuit failure.

Use a vacuum cleaner or air blower to remove foreign material from the engine and drive compartment.

6. 6. **Battery Maintenance**

Batteries can be dangerous as they contain acids (corrosive chemicals), flammable vapors, and large amounts of stored electrical energy, which may cause chemical burns, explosions, or fires. Wear goggles and a protective face guard. Remove jewellery/watches before handling the battery. Do not perform any battery maintenance where there are open flames or the possibility of sparks. Always work in a well-ventilated area. Ensure the top of the battery is clean and dry (free of dirt and grime) as a dirty battery can discharge across the top of the battery casing. Inspect the terminals, screws and cables for breakage, damage or loose connections and they are clean, tight, and free of corrosion. When not in use, a battery discharges by as much as 1% a day, more when the climate is warm. To make up for this loss, a boosting charge should be given once a month. Disconnect battery terminals (negative terminal first) to charge, then allow to stand minimum 1/2hr before re-connecting (negative terminal first). If a battery is not used for a period of more than three (3) months, the terminals should be disconnected, and trickle charged at two (2) amps for two (2) hours once every three (3) months or before use. At the end of any

maintenance ensure the battery is securely fastened in place, especially if it has been removed.

6. 7. **Deck Cleaning**

IMPORTANT

After each use remove grass buildup from under the mower deck. Excessive grass buildup will interfere with the operation and performance of the mower deck. Excessive grass buildup may also cause component failure.

6.7.1 Park machine on hard level surface, stop engine and set the park brake. Remove key from the ignition switch.

Position the mower deck in the transport (all the way up) setting with the latch hooked and the height adjustment pin in the 5-inch cutting height hole.

6.7.2 Lift the front of the machine, using the front cross member of the deck carrier frame, and support the machine using jack stands or other equivalent safety blocks.

DO NOT rely solely on mechanical or hydraulic jacks or lifts for support. Always use adequate wheel chocks on tyres remaining on the ground.

6.7.3 Use a long flat bar to clean under the deck, to avoid positioning yourself under the machine.

6.7.4 Clean out all grass and debris build-up from the underside of the deck, around blade spindles and the deck discharge chute.

6. 8. **Blade Inspection**

 **WARNING**

DO NOT handle mower blades with bare hands. Use heavy leather gloves or wrap blade with protective

material and block securely when removing blades. Careless or improper handling may result in serious injury.

Inspect blades before each use to determine that they are mounted securely and are in good condition. Replace any blade that is bent, excessively nicked, worn, or has any other damage. Small nicks can be ground out when sharpening.

6.9. Replace Blade

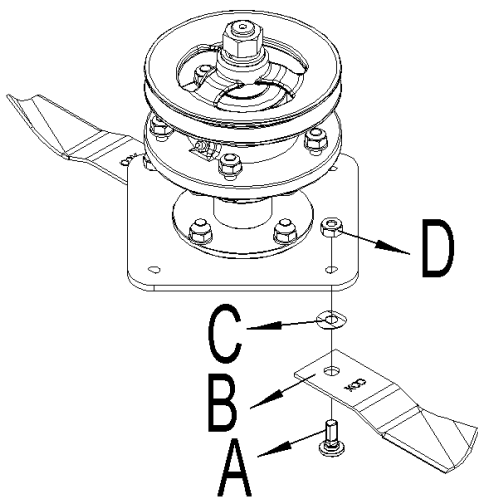


Figure 12

6.9.1 Stop engine, ensure mowing attachment blades have stopped rotating, disconnect spark plug lead from spark plug and ground it, disconnect battery at negative terminal, to prevent accidental starting. Check condition of cutter disc remove the blade nut (D) using a suitable spanner (if using a socket remove the blanking grommet to gain access to the blade nut) and replace all blades(B), bolts(A), nuts(D) and washers(C) to preserve balance, tighten blade nut. **Recommended blade nut torque is 36-40Nm. Do not over tighten.**



WARNING

Do not use mowing attachment with

broken or bent blades, damaged or worn bolts and nuts or damaged cutter disc, otherwise damage and premature wear will result from vibration. Replace blades, bolts and nuts only in pairs to maintain correct balance.

7. AJUSTMENT

IMPORTANT

Disengage PTO, shut off engine, wait for all moving parts to stop, and remove key before servicing, cleaning, or adjusting the unit.

7.1. Cutting Height Adjustment

(Refer to Figure 16)

The cutting height of the mower deck is adjusted from 1 to 4 inches (2.5 cm to 10.2 cm) in 1/4-inch (6.4 mm) increments.

7.1.1 Stop the machine and move the motion control levers outward to the neutral locked position.

7.1.2 Position the transport lock in the latching position.

7.1.3 Raise and lock the deck to the 4 1/4-inch (10.8 cm) transport position (Figure 16).

7.1.4 The deck is raised by pushing the foot operated deck lift pedal forward. The pedal is located at the front right corner of the floor pan.

Note: When changing the cutting height positions, always come to a complete stop and disengage the PTO.

7.1.5 Insert the height adjustment pin into the hole corresponding to the desired cutting height.

7.1.6 Push the deck lift pedal, release the transport lock, and allow the deck to lower to the cutting height.

Do not operate foot pedal with hands.

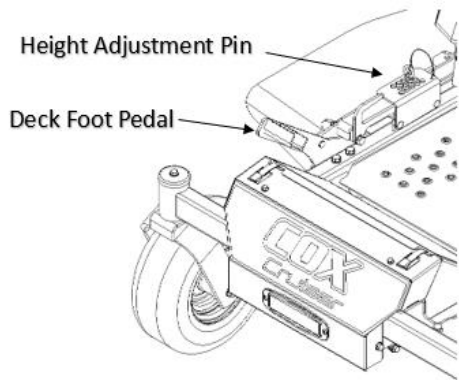


Figure 16

7. 2. Deck Leveling Adjustment.

7.2.1 Position mower on a flat surface.

7.2.2 Stop engine, wait for all moving parts to stop, and remove key.

7.2.3 Check air pressure on all four tyres and adjust to the correct pressure if necessary.

7.2.4 Mower deck can be leveled at any cut height position. If blade heights do not match cut height setting, do not adjust currently. The mower deck must be leveled side to side and front to rear before cut height setting is adjusted. See appropriate sections below.

7.2.5 Position left blade in the side-to-side position and measure from the outside blade tip to the level surface (Refer to Fig. 17).

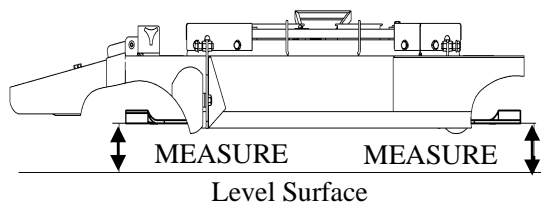


Figure 17

7.2.6 If the difference between both measurements is greater than 3mm, adjustment is necessary.

7.2.7 Locate the level adjust nut (A) and

nut (B) on the mower each deck hanger (Refer to Fig.18).

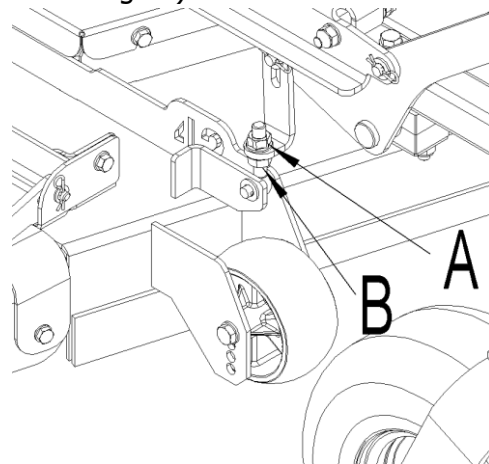


Figure 18

7.2.8 Slightly loosen the nut (B) on the mower deck hanger.

7.2.9 Adjust the mower deck up or down as required to match the right front by turning the level adjust nut(A) clockwise to raise and counterclockwise to lower.

7.2.10 Adjust the level adjust nut (A) until blades on both sides are the same height above the level surface.

7.2.11 With blades leveled side to side, tighten the nut (B) securely.

7. 3. Deck Belt Adjustment

The belt tension is set at the factory but may need adjustment after the first hour of initial use. Periodically belt should be checked for proper tension, following the procedure below (Refer to Figure 19).

7.3.1 Position the mower deck in the lowest (1inch) cut height setting and remove the left belt shield.

7.3.2 Loosen the lock nut (A) and adjust the draw nut (C) to change belt tension.

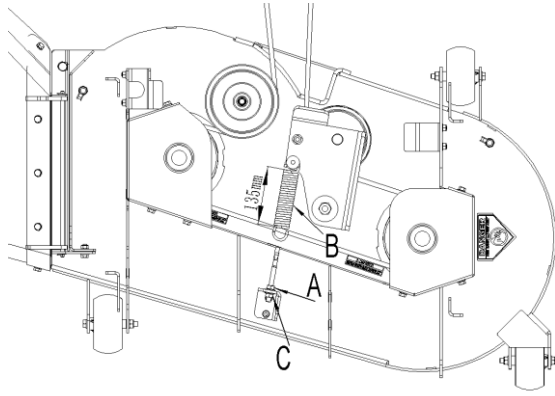


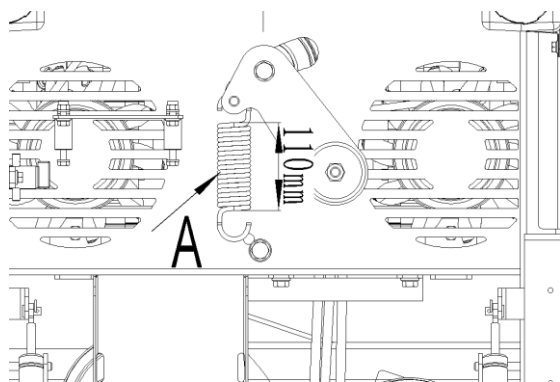
Figure 19

7.3.3 Increase belt tension by turning the draw nut (C) clockwise and decrease belt tension by turning the draw nut counterclockwise (Refer to Fig. 19).

7.3.4 The idler spring (B) body length should measure approximately 135mm for proper belt tension.

7.3.5 Tighten the lock nut (A) when the proper belt tension is achieved.

7. 4. Dump Drive Belt Adjustment.



The way is similar to the above Deck Belt Adjustment, The idler spring (B) body length should measure approximately 11cm inches for proper belt tension (Refer to Figure 20).

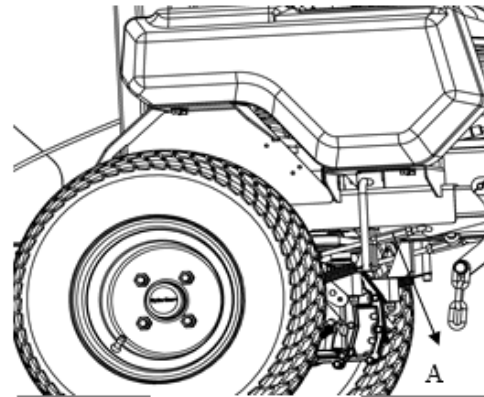
7. 5. Neutral Adjustment.

If drive wheels travel forward or backward when the steering lever is in their neutral lock position, adjustment is required.

7.5.1 Lift and support the rear of machine using jack stands or other equivalent safety

blocks. DO NOT rely solely on mechanical or hydraulic jacks or lifts for support.

Make sure two drive wheels keep away from the ground.



7.5.2 Start the engine and put the steering levers in their neutral lock position of operation, then observe which drive wheel is rotating. That side will need to be adjusted.

7.5.3 If the left wheel need to be adjusted, locate position A(Refer to Figure 21) ,the more detail of the position A is shown as the Figure 22.

7.5.4 If the right wheel rotates clockwise (From the outside view see Figure 21), slightly loosen the nut (B and C), then turn the neutral buckle (A of Figure 21) counterclockwise (from the direction of arrow, see Figure 21) until the wheel does not rotate. On the other hand, turn the nut clockwise. Finally, tighten the nut (B and C) securely.

7.5.5 If the left wheel needs to be adjusted, use the same way to adjust the left wheel.

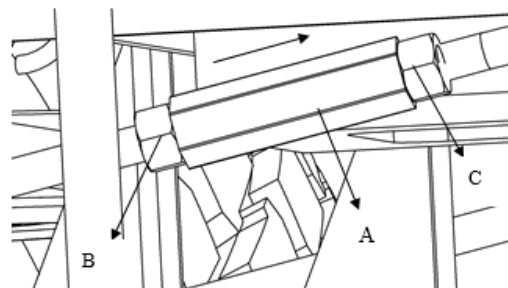


Figure 21

7. 6. Seat Adjustment.

Refer to Figure 22. The seat can be adjusted forward and backward. Loosen the adjustment bolt (A), position the seat as desired, Tighten the lock bolt (A) to lock the seat into position.

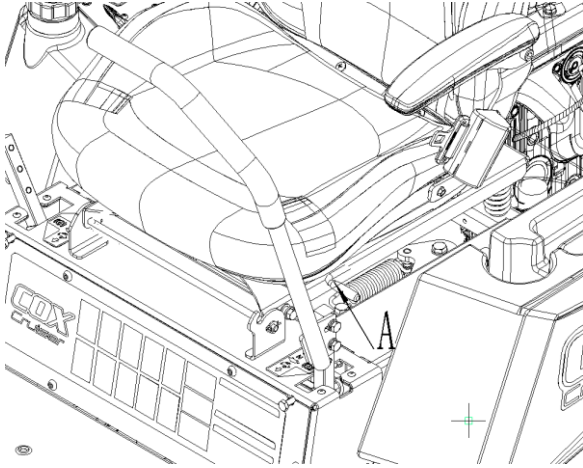


Figure 22

7. 7. Parking Brake Adjustment

7.7.1 Disengage the PTO, stop the engine, block the front wheels, remove the ignition key, and engage the parking brake.

7.7.2 Locate the brake spring (A, Figure 23). Gears in the brake arm(B) meshed into the gears of the brake disk. Adjust the nut on the spring adjustable lever. Ensure that the spring has an extension of 1/2"(12mm) when it is in the free state. Use the same method to adjust the brake adjustable lever.

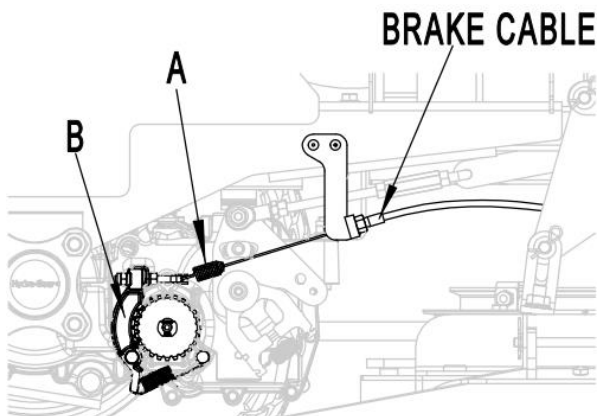


Figure 23

7.7.3 Inspect and make sure the brake is adjusted correctly.

8. TROUBLESHOOTING

WARNING

To avoid serious injury, perform maintenance on the mower only when the engine is stopped, and the parking brake engaged.

Always remove the ignition key, disconnect the spark plug wire and fasten it away from the plug before beginning the maintenance, to prevent accidental starting of the engine.

While normal care and regular maintenance will extend the life of your equipment, prolonged or constant use may eventually require a service to be performed to allow it to continue operating properly.

The troubleshooting guide below lists the most common problems, their causes, and remedies.

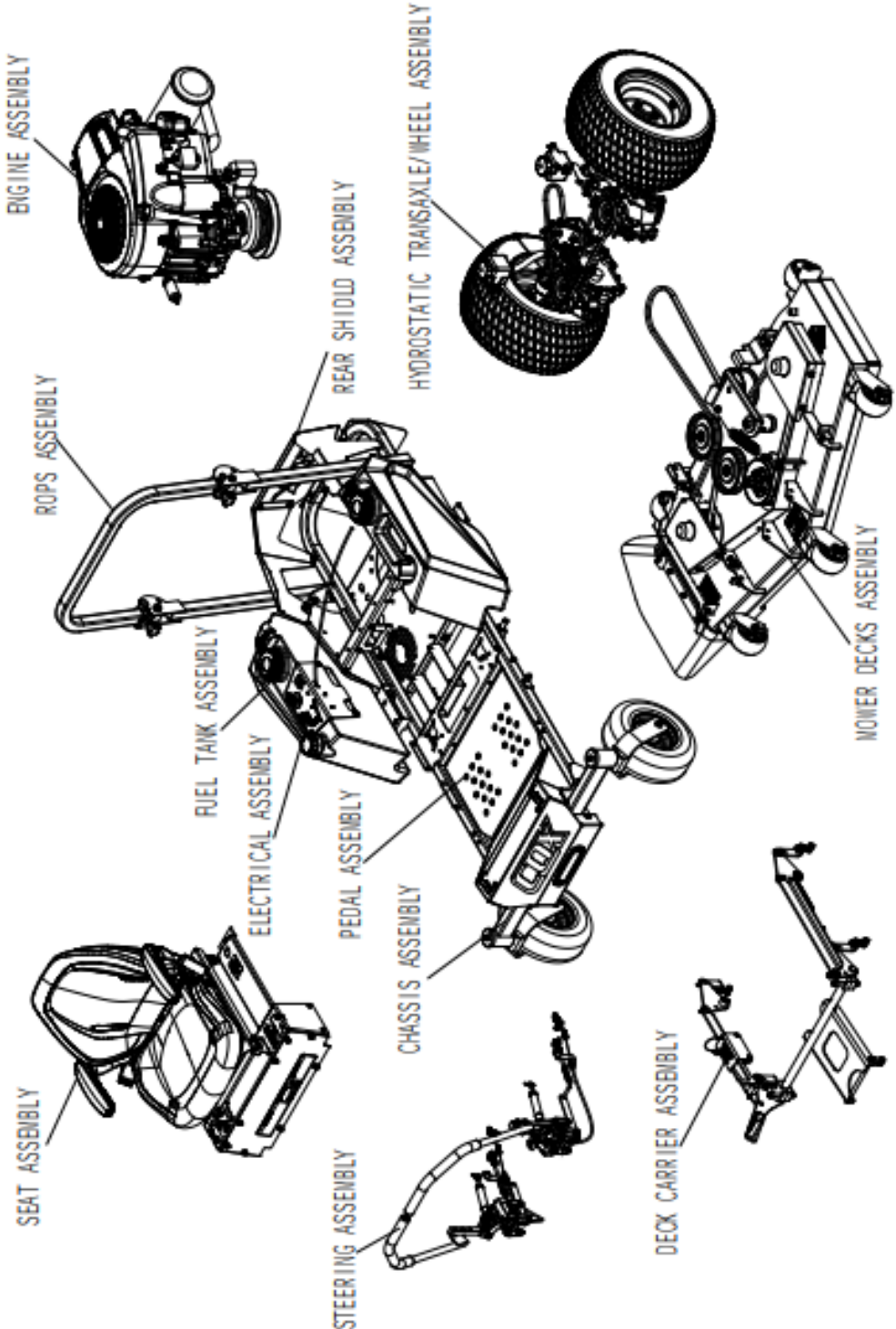
See the information on the following pages for instructions on how to perform most of these minor adjustments and service repairs yourself. If you prefer, all these procedures can be performed for you by your local authorised Cox Dealer.

Problem	Possible Cause	Corrective Action
Starter does not crank	<ol style="list-style-type: none"> 1. PTO is engaged. 2. Parking brake is not engaged. 3. Drive levers are not in neutral lock position. 4. Battery does not have a full charge. 5. Electrical connections are corroded, loosened or faulty. 6. Fuse is blown. 7. Relay or switch is defective. 8. Faulty module. 	<ol style="list-style-type: none"> 1. Disengage the PTO. 2. Set the parking brake. 3. Ensure the drive levers are in the neutral lock position. 4. Charge the battery. See Check Battery Charge and Recommended Jump-Starting Procedure sections in Maintenance. 5. Check the electrical connections for good contact. Clean connector terminals thoroughly with electrical contact cleaner, apply dielectric grease and reconnect. 6. Replace the blown fuse. 7. Contact an Authorized Service Dealer. 8. Replace module.
Problem	Possible Cause	Corrective Action
Engine will not start, starts hard, or fails to keep running	<ol style="list-style-type: none"> 1. The fuel tank is empty. 2. Seat switch triggered engine shutdown (EFI). 3. The oil level in the crankcase is low. 4. The throttle and choke are not in the correct position. 5. Dirt in fuel filter. 6. Dirt, water, or stale fuel is in the fuel system. 7. The air cleaner is dirty. 8. Seat switch is not functioning properly. 9. Electrical connections are corroded, loosened or faulty. 10. Relay or switch is defective. 11. Faulty spark plug. 12. Spark plug wire is not connected. 13. Faulty module. 	<ol style="list-style-type: none"> 1. Fill the fuel tank. 2. Turn start switch to the off position to clear shutdown fault. 3. Add oil to the crankcase. 4. Be sure the throttle control is midway between the "SLOW" and "FAST" positions, and the choke is in the "ON" position for a cold engine or the "OFF" position for a warm engine. 5. Replace the fuel filter. 6. Contact an Authorized Service Dealer. 7. Clean or replace the air cleaner element. 8. Check the seat switch indicator. Replace seat if needed. 9. Check the electrical connections for good contact. Clean connector terminals thoroughly with electrical contact cleaner, apply dielectric grease and reconnect. 10. Contact an Authorized Service Dealer. 11. Clean, adjust or replace spark plug. 12. Check the spark plug wire connection. 13. Replace module.
Engine loses power	<ol style="list-style-type: none"> 1. Engine load is excessive 2. Air cleaner is dirty. 3. Oil level in the crankcase is low. 4. Cooling fins and air passages for the engine are plugged. 5. Dirt in fuel filter. 6. Dirt, water, or stale fuel is in the fuel system. 	<ol style="list-style-type: none"> 1. Reduce the ground speed. 2. Clean or replace the air cleaner element. 3. Add oil to the crankcase. 4. Remove the obstructions from the cooling fins and air passages. 5. Replace the fuel filter. 6. Contact an Authorized Service Dealer.

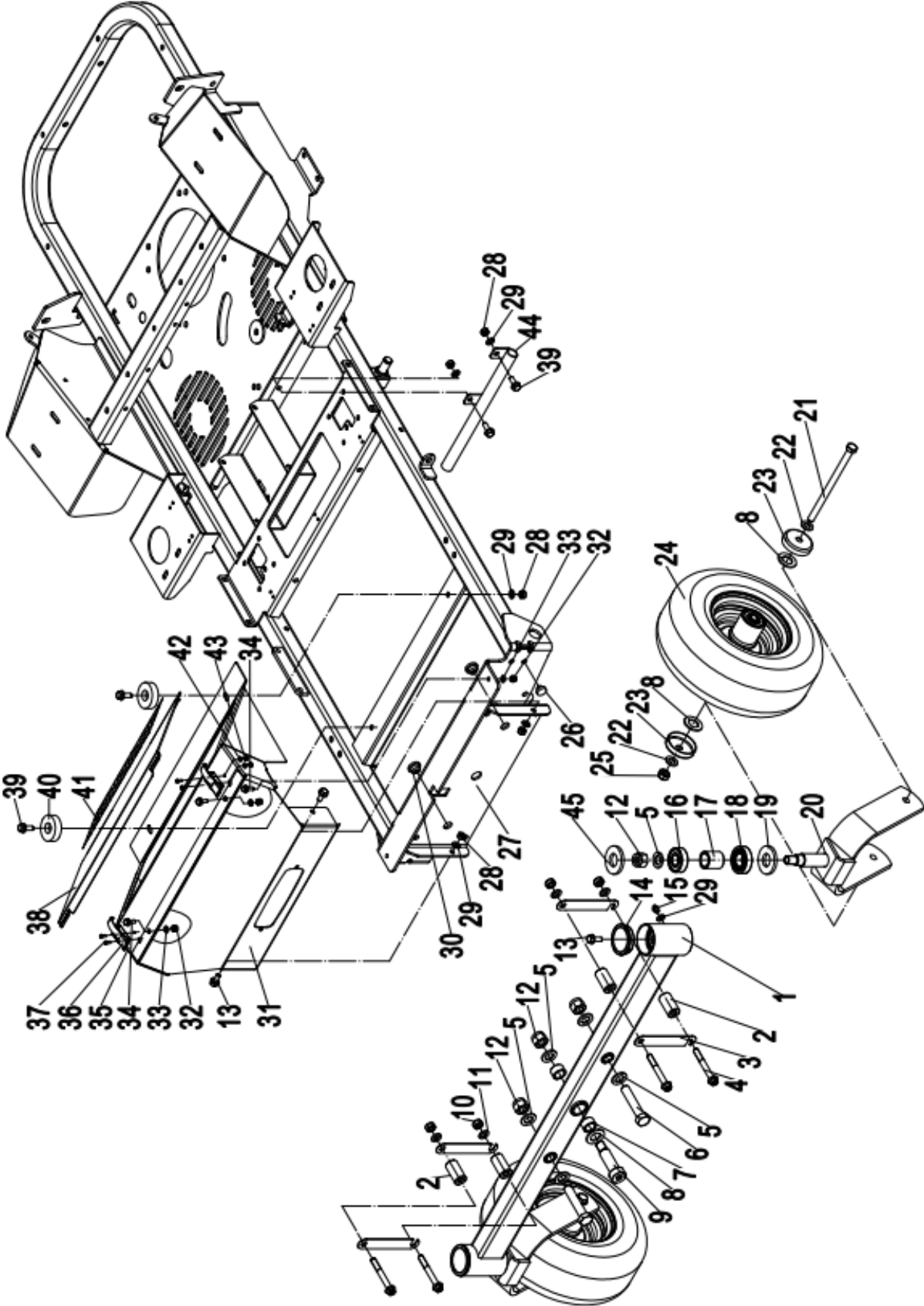
Problem	Possible Cause	Corrective Action
Machine does not drive	<ol style="list-style-type: none"> 1. Drive or pump belt is worn, loose or broken. 2. Drive or pump belt is off a pulley. 3. Broken or missing idler spring. 	<ol style="list-style-type: none"> 1. Change the belt. 2. Change the belt. 3. Replace the spring.
Uneven cutting height.	<ol style="list-style-type: none"> 1. Blade(s) not sharp. 2. Cutting blade(s) is/are bent. 3. Mower deck is not level. 4. Underside of mower is dirty. 5. Tyre pressure on the drive not correct. 6. Blade spindle bent. 7. Tips of adjacent blades are at an uneven cutting height. Blades tips should be even within 3/16 inch which is approximately one blade thickness. 	<ol style="list-style-type: none"> 1. Replace the blades. 2. Level mower deck from side-to-side and front-to-rear. 3. Clean the underside of the mower. 4. Adjust tyre pressure in the drive side. 5. Contact an Authorised Service Dealer. 6. Replace blades, spindles and (or) check for damage to mower deck.
Abnormal vibration	<ol style="list-style-type: none"> 1. Cutting blade(s) is/are bent or unbalanced. 2. Blade mounting bolt is loose. 3. Engine mounting bolts are loose. 4. Loose engine pulley, idler pulley, or blade pulley. 5. Engine pulley is damaged. 6. Blade spindle is bent. 7. Belt is damaged. 	<ol style="list-style-type: none"> 1. Replace the blades. 2. Tighten the blade mounting bolt. 3. Tighten the engine mounting bolts. 4. Tighten the appropriate pulley. 5. Contact an Authorized Service Dealer. 6. Contact an Authorized Service Dealer. 7. Install new belt.
Blades DO NOT rotate.	<ol style="list-style-type: none"> 1. Drive belt is worn, loose or broken. 2. Deck belt is worn, loose or broken. 3. Deck belt is off pulley. 4. Broken or missing idler spring. 5. Drive belt not routed correctly. 	<ol style="list-style-type: none"> 1. Check the belt tension. 2. Install new deck belt. 3. Install belt on clutch and deck pulleys, idlers, and tensioning idler per routing decal on deck. 4. Replace the spring. 5. Refer to belt routing decal on deck.
Clutch will not engage.	<ol style="list-style-type: none"> 1. Fuse is blown. 2. Low voltage supply at the clutch. 3. Damaged coil. 	<ol style="list-style-type: none"> 1. Replace fuse. Check coil resistance, battery charge, charging system, and wiring connections and replace if necessary.
Clutch will not engage.	<ol style="list-style-type: none"> 4. Inadequate current supply. 5. Rotor/armature air gap is too large. 	<ol style="list-style-type: none"> 2 To 5. Contact your local COX Dealer.

9. ILLUSTRATED PARTS LIST (IPL)

9.1. MOWER ASSEMBLY



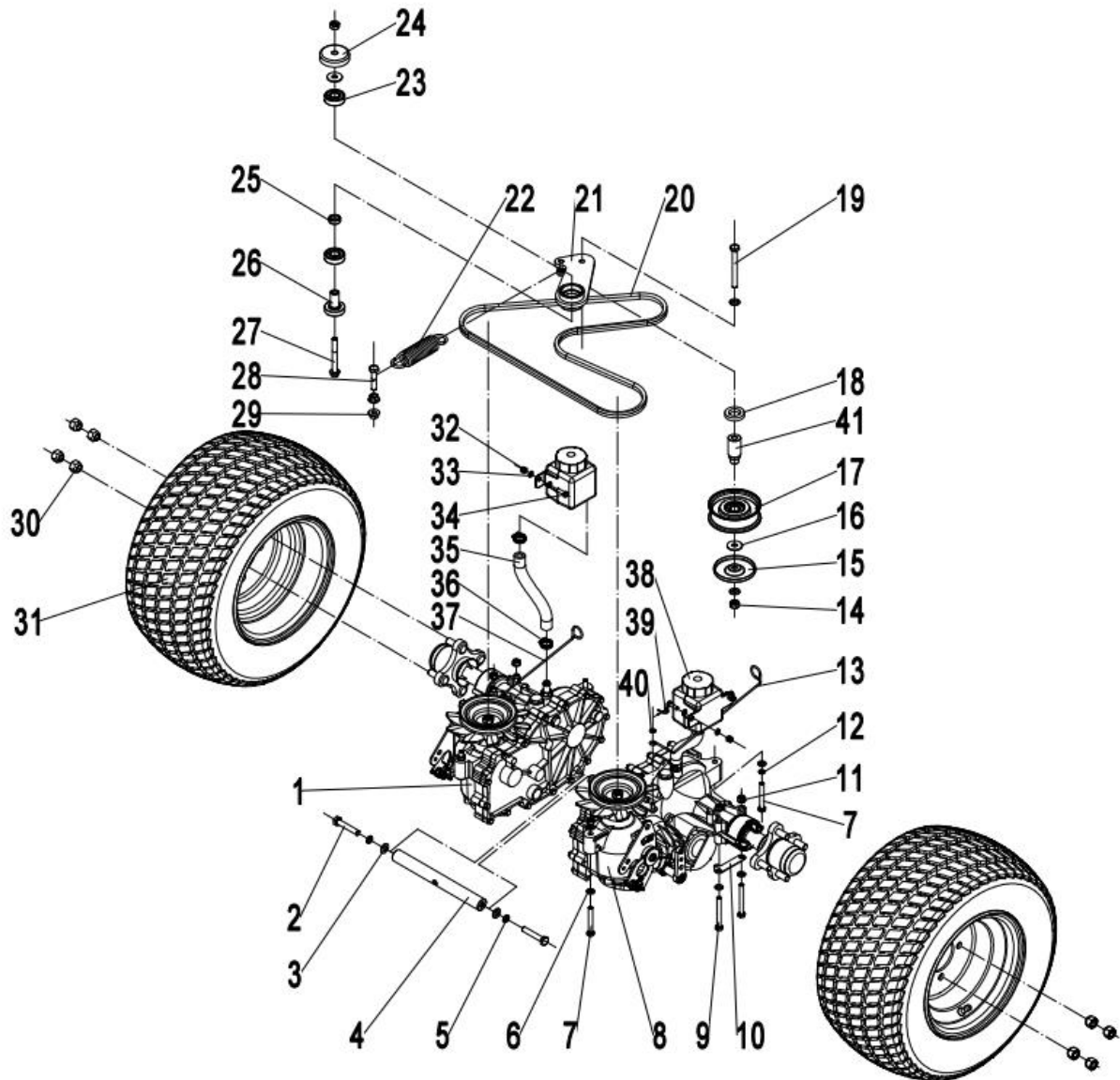
9. 2. CHASSIS ASSEMBLY



Item No.	Part No.	Description		Qty.	Others
1	94.4012951-ZH1P6006	Front Crossbeam		1	
2	94.4012958	Spacer Sleeve		4	
3	94.4012957	Spacer Gasket		4	
4	94.7011123	Hex Bolt	M10×80	4	
5	94.7031602	Washer	Φ16	7	
6	94.7011620	Hex Bolt	M16×80	2	
7	94.7084311	Copper Bushing		2	
8	94.7032006	Washer	Φ20	5	
9	94.7011634	Sholder Bolt	M20x60	1	
10	94.7021004A	Lock Nut	M10	4	
11	94.7031009	Washer	Φ10	4	
12	94.7021603	Lock Nut	M16	5	
13	94.7010894	Hex Flange Bolt	M8×16	4	
14	94.2131951	Dust cover		2	
15	94.7320020	Grease Zerk	M8×1	2	
16	94.7060401	Deep Groove Ball Bearing	6204-2RZ	2	
17	94.7085350	Spacer		2	
18	94.7061234	Tapered Roller	30205	2	
19	94.4012953	Bearing Gasket		2	
20	94.4012952-ZH1P6006	Caster Wheel Fork		2	
21	94.7011309	Hex Bolt	M12×190	2	
22	94.7031221	Washer	Φ12	4	
23	94.4065160	Dust Cover		4	
24	94.8032481	Caster Wheel		2	
25	94.7021204A	Lock Nut	M12	2	
26	94.2132030	Blocking	Φ10	2	
27	94.4038315-ZH1P6006	Chassis		1	
28	94.7020803A	Lock Nut	M8	4	
29	94.7030819	Washer	Φ8	6	
30	94.2130021	Orifice Plug	Φ16	2	
31	94.4012963-ZH1P6006	Front mounting plate		1	
32	94.7020602A	Lock Nut	M6	4	
33	94.7030601	Washer	Φ6	4	
34	94.7010674	Hex Flange Bolt	M6×16	4	
35	94.4012962-ZH1P6006	Tool Box Cover		1	
36	94.4157931	Lock Catch		2	
37	94.7260404	Screw	M4×10	4	
38	94.4012961-ZH1P6006	Tool Box Cover Door		1	

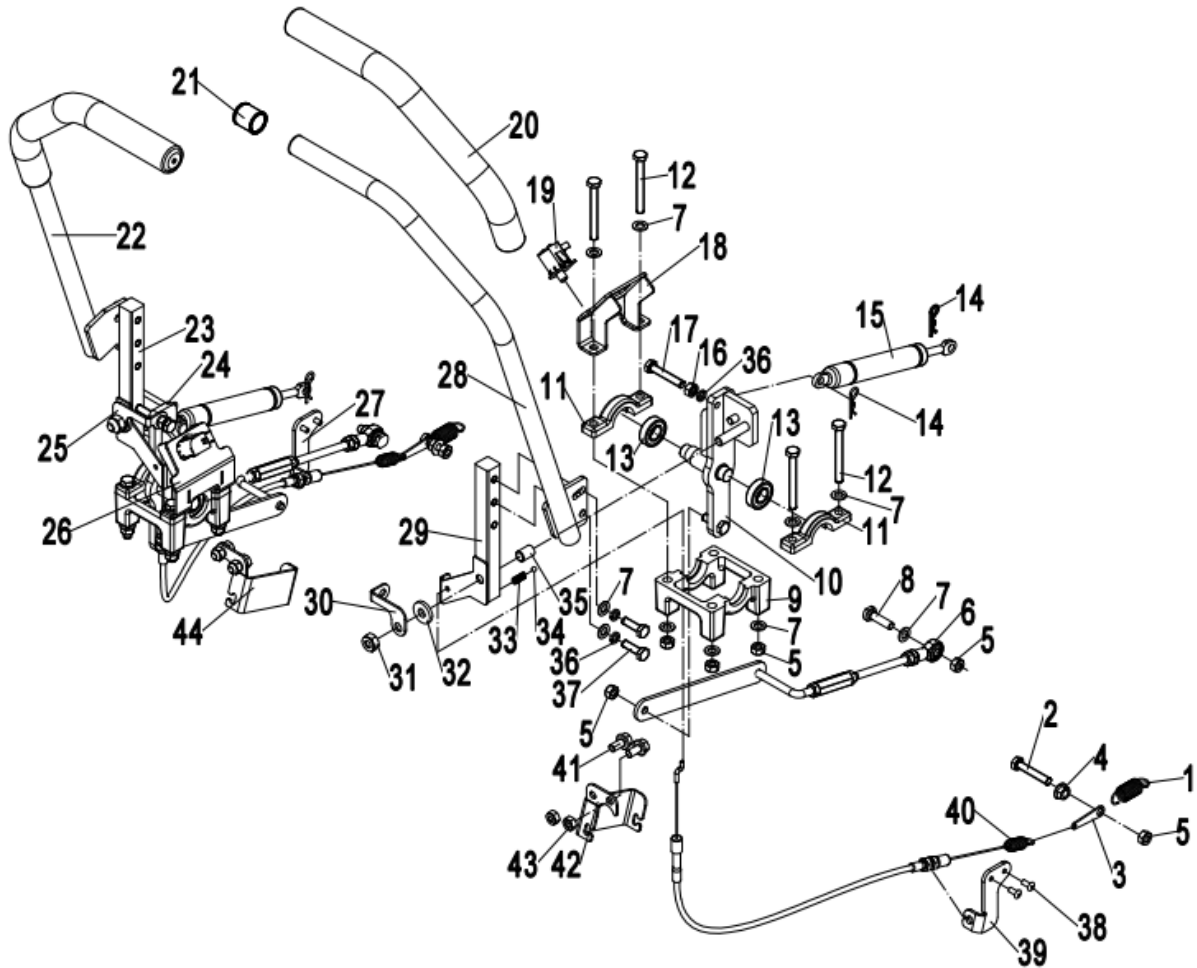
Item No.	Part No.	Description		Qty	Others
39	94.7010820	Hex Flange Bolt	M8×20	4	
40	94.5040940	Isolator		2	
41	94.4060069	Anti Slip Tape		1	
42	94.7030402	Washer	Φ4	4	
43	94.7020403A	Lock Nut	M4	4	
44	94.4060066-ZH1P6006	Fuel Line Protector		1	
45	94.7080470	Washer		2	

9. 3. HYDROSTATIC TRANSAXLE/WHEEL ASSEMBLY



Item No.	Part No.	Description		Qty.	Others
1	94.ZJ-GPEE-SKDB-2PLX	Hydrostatic Transaxle, RH	ZT3100	1	
2	94.7011040	Hex Bolt	M10×55	2	
3	94.7031009	Washer	Φ10	4	
4	94.4039495-ZH1P6006	Drive Connecting Rod		1	
5	94.7041002	Lock Washer	Φ10	2	
6	94.7030819	Washer	Φ8	14	
7	94.7010807	Hex Bolt	M8×60	4	
8	94.ZJ-KPEE-SKDC-3PLX	Hydrostatic Transaxle, LH	ZT3100	1	
9	94.7010880	Hex Bolt	M8×70	4	
10	94.6090326-ZH1P6006	Spring Hanging Plate		2	
11	94.7020803A	Lock Nut	M8	6	
12	94.7040802	Lock Washer	Φ8	2	
13	94.4045990	Left Drive Actuator		1	
14	94.7021039	Lock Nut	M10	2	
15	94.4061205-ZH4P6064	Dust Cover		1	
16	94.7031004	Large Washer	Φ10	2	
17	94.1041300	Deck Mount	Φ105	1	
18	94.7220321	Wool Felt Dust Protector		1	
19	94.7011094	Hex Bolt	M10×90	1	
20	94.1051180	Belt Bando A61		1	
21	94.4060421-ZH1P6006	Dynamic Tensioning Arm		1	
22	94.7059600	Idler Pulley Spring		1	
23	94.7061224	Deep Groove Ball Bearing	6203Z	2	
24	94.4065160	Dust Cover		1	
25	94.7085380	Spacer Sleeve		1	
26	94.1014450	Tensioner Shaft I		1	
27	94.7011123	Hex Bolt	M10×80-	1	
28	94.7241054	Hex Bolt	M10×55	1	
29	94.7021018	Flange Nuts	M10	2	
30	94.7010072A	Lug Nut	1/2-20-2B	8	
31	90.8032008	Tyre 20"	20×8-8	2	42"
	90.8032010	Tyre 20"	20×10-8	2	48"/52"
32	94.7020602A	Lock Nut	M6	4	
33	94.7030601	Washer	Φ6	8	
34	94.7010667	Hex Bolt	M6×20	4	
35	94.2114675	Oil Line		2	
36	94.7150017	Hose Clamp-Spring	Φ25	4	
37	94.4045980	Right Tendril		1	
38	94.71328	Oil reservoir Tank 71328		2	
39	94.7131806	D-Pin		2	
40	94.7030601	Washer	Φ6	2	
41	94.1010003	Tensioner Pulley Spacer		1	

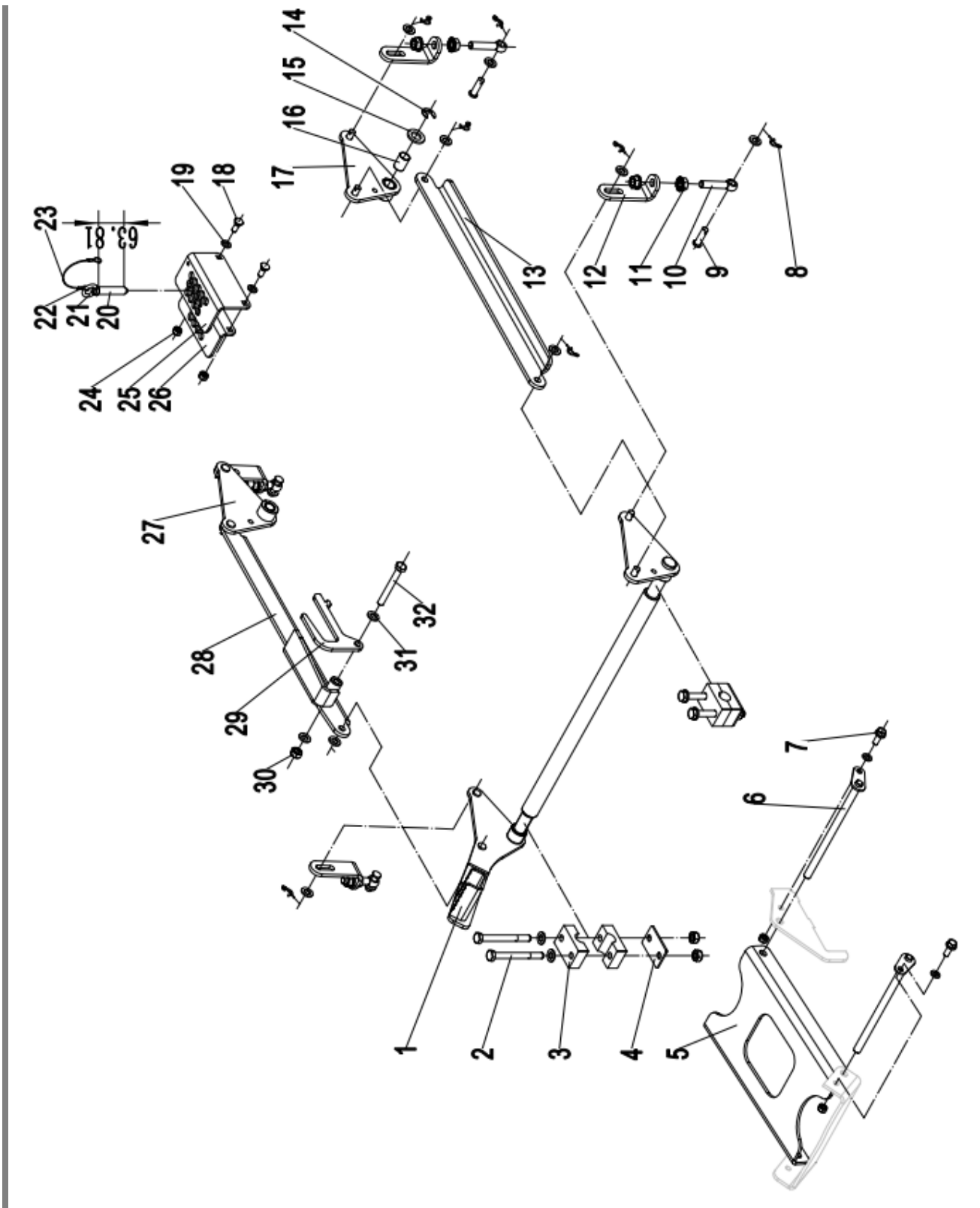
9. 4. STEERING ASSEMBLY



Item No.	Part No.	Description		Oty.	Others
1	94.7051511	Return Pull Spring		2	
2	94.7010893	Hex Bolt	M8×30	2	
3	94.6090325	Spring Hanging Plate		2	
4	94.7020819	Hex Lock Nut	M8	2	
5	94.7020803A	Hex Lock Nut	M8	14	
6	94.4066760	Joint Bearing RH/Rod End		2	
7	94.7030819	Washer	Φ8	22	
8	94.7181630	Hex Nut	M8	2	
9	94.4133431	Bearing Pedestal		2	
10	94.4269810	Handle Motion Pivot/LH		1	
11	94.4163010	Bearing Bracket		4	

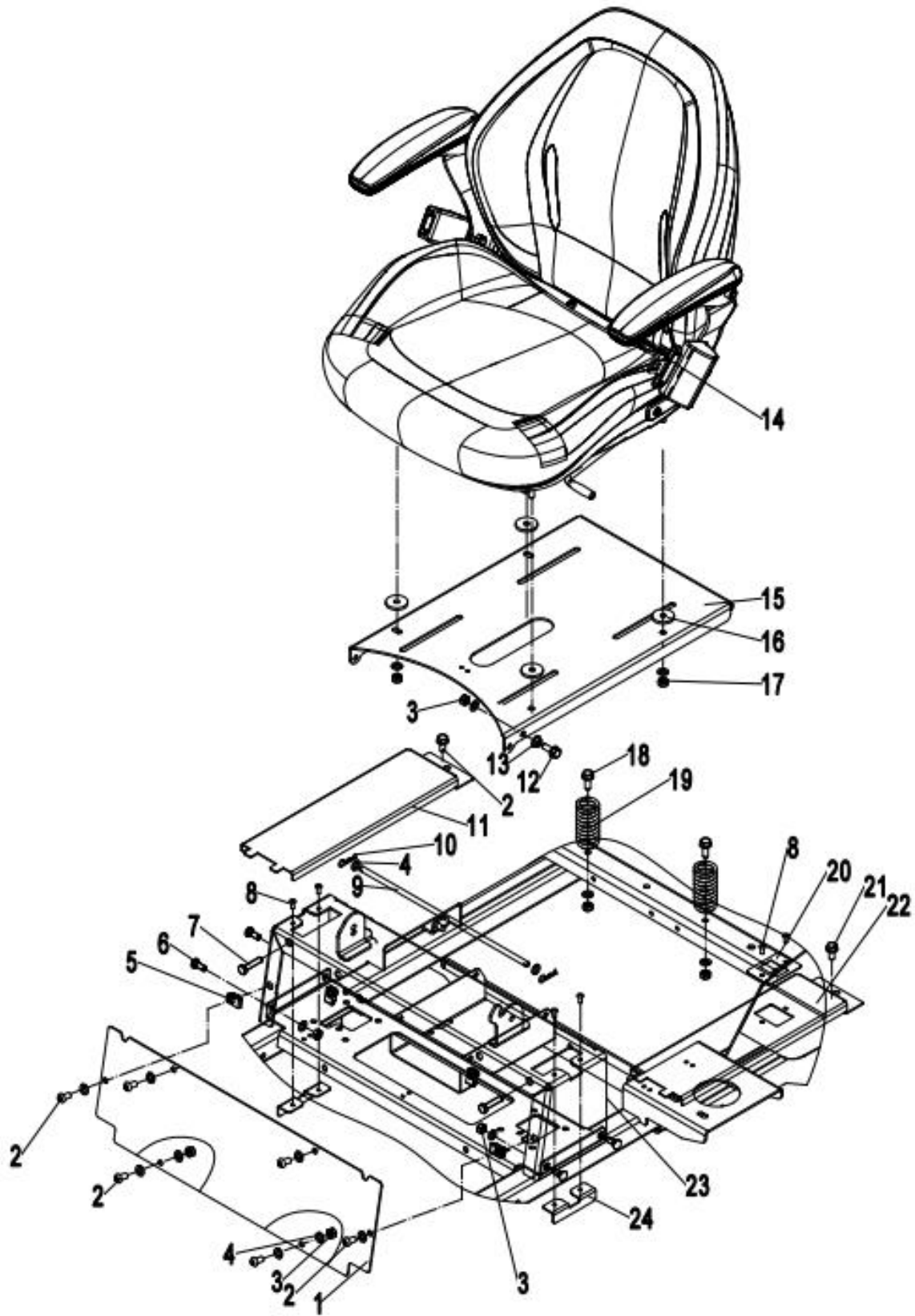
Item No.	Part No.	Description		Oty.	Others
12	94.7010880	Hex Bolt	M8×70	8	
13	94.7060014	Bearing	6002-2RS	4	
14	94.7131806	D Pin		4	
15	94.2020450	Damper		2	
16	94.7020804	Hex Nut	M8	2	
17	94.7010826	Hex Bolt	M8×45	2	
18	94.4130008-ZH1P6006	Left Mounting Plate		1	
19	94.2401354	Park Switch		2	
20	94.5013320	Handle Grip- Foam		2	
21	94.2132050	End Cap		2	
22	94.4010008	Steering Handle RH		1	
23	94.4300002	Control Arm /RH		1	
24	94.4269820	Motion Pivot/RH		1	
25	94.4165750	Lock Washer /RH		1	
26	94.4130009-ZH1P6006	Right Mounting Plate		1	
27	94.4260002-ZH1P6006	Bracket, RH		1	
28	94.4010007-ZH1P6006	Steering Handle LH		1	
29	94.4300001	Control Arm /LH		1	
30	94.4165740	Lock Washer /LH		1	
31	94.7021004A	Hex Nut	M10	2	
32	94.7083540	Washer	Φ10	2	
33	94.7057560	Operating Stop Spring		2	
34	94.5060601	Steel Ball	6	2	
35	94.7083810	Bearing W/Flange		2	
36	94.7040802	Lock Washer	Φ8	6	
37	94.7010821	Hex Bolt	M8×25	4	
38	94.7030413	Core-pulling Rivet	Φ4.8×12	4	
39	94.4260001-ZH1P6006	Bracket, LH		1	
40	94.5072850	Drive Cable		2	
41	94.7010894	Hex Bolt	M8×16	4	
42	94.4260003	Left Connecting Plate		1	
43	94.7020830	Hex Nut	M8	4	
44	94.4260004	Right Connecting Plate		1	

9.5. DECK CARRIER ASSEMBLY



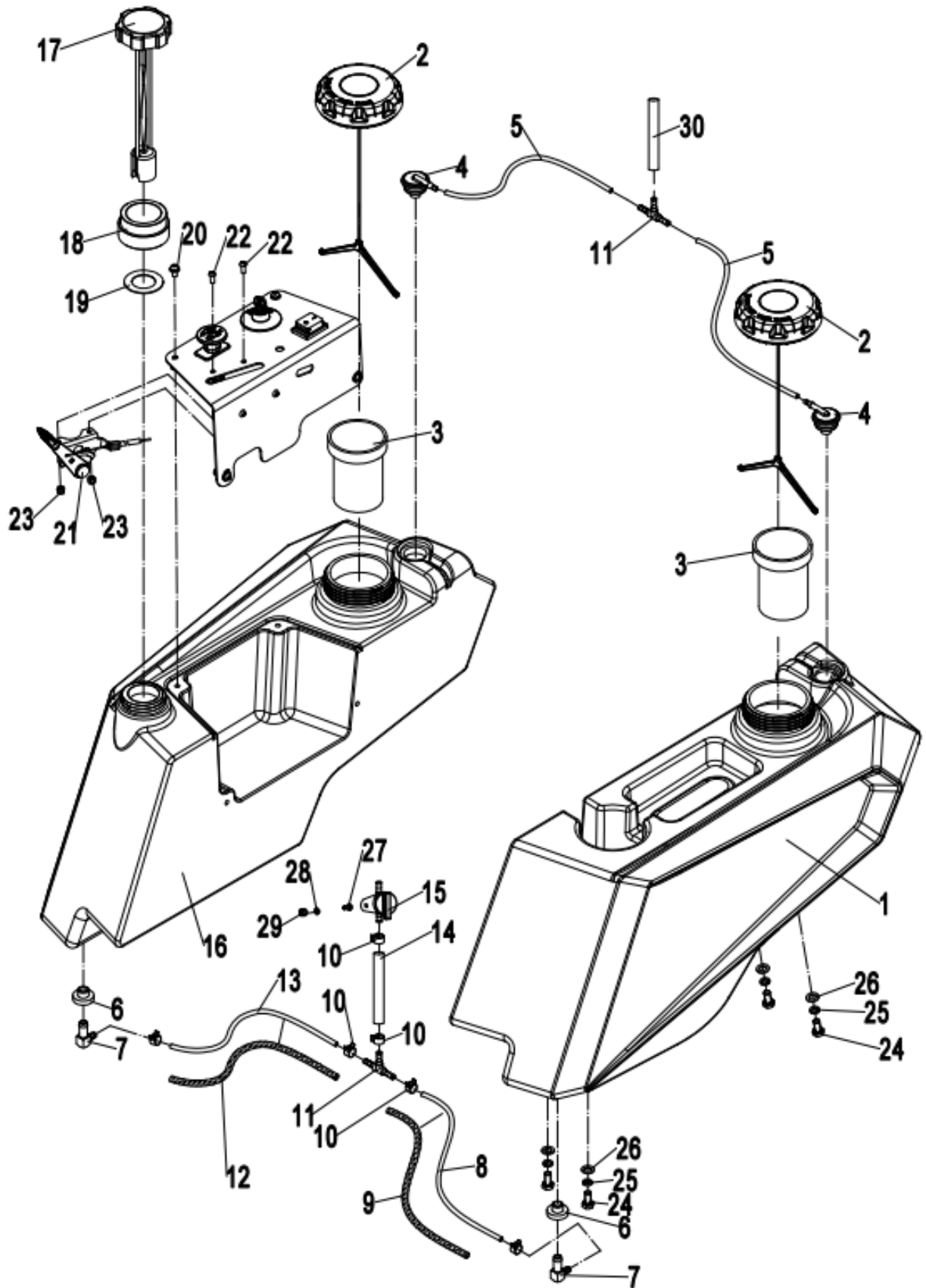
Item No.	Part No.	Description		Oty.	Others
1	94.4058191-ZH1P6006	Lift Lever		1	
2	94.7011151	Hex Bolt	M10×100	4	
3	94.4310210	Lift Bearing Block		4	
4	94.4151750	Lift Bearing Lower Plate		2	
5	94.4058201-ZH1P6006	Cutter Deck Hanger		1	
6	94.4058202	Deck Hanger Shaft		2	
7	94.7010820	Hex Bolt	M8×20	2	
8	94.7131806	D-Pin		12	
9	94.7131008	Deck Mount Pin	B10×32×3.2× 27.5	4	
10	94.7291260	Joint Bolt	M12×60	4	
11	94.7021242	Hex Flange Nut	M12	10	
12	94.4058197	Cutter Deck Lug		4	
13	94.4058199-ZH1P6006	Bellcrank Link-Left		1	
14	94.7141203	E Clip	Φ12	2	
15	94.7031602	Washer	Φ16	2	
16	94.7121800	Self-lubricating Bearing		2	
17	94.4058198-ZH1P6006	Bell Crank-Left		1	
18	94.7180818	Hex Bolt	M8×25	2	
19	94.7030819	Washer	Φ8	4	
20	94.4046100	Deck Height Pin		1	
21	94.1035104	Eye Bolt		1	
22	94.7084410	Wire Crimp	2.2×4.4×7	2	
23	94.4170165	Wire Rope	1×47-1.5	1	
24	94.7020803A	Hex Nut	M8	4	
25	94.4058195	Height Adjustment Plate Upper		1	
26	94.4058194	Height Adjustment Plate lower		1	
27	94.4058196-ZH1P6006	Bell Crank-Right		1	
28	94.4058192-ZH1P6006	Bell Crank link-Right		1	
29	94.4058193	Deck Lock Out Plate		1	
30	94.7021004A	Hex Nut	M10	5	
31	94.7031009	Washer	Φ10	18	
32	94.7011052	Hex Bolt	M10×80	1	

9. 6. SEAT ASSEMBLY



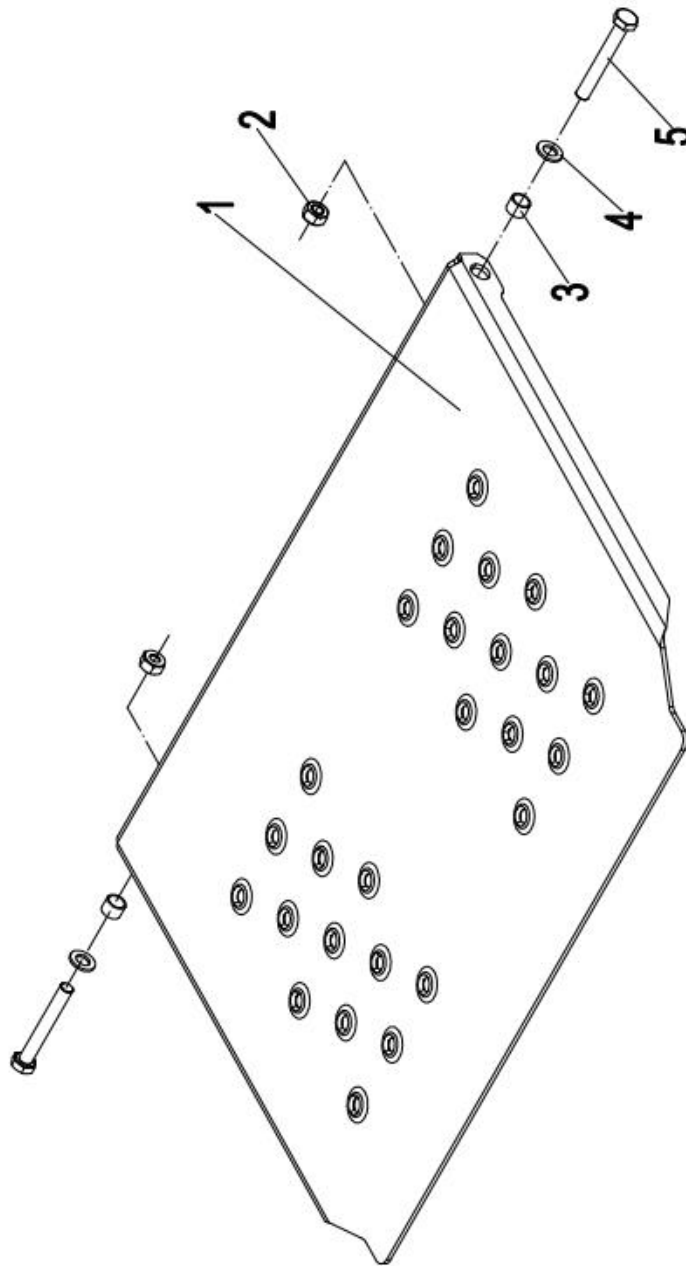
Item No.	Part No.	Description		Oty.	Others
1	94.4060413-ZH1P6006	Front Plate		1	
2	94.7240999	Socket Button Screw	M8×16	6	
3	94.7020803A	Hex Lock Nut	M8	9	
4	94.7030819	Washer	Φ8	21	
5	94.7020820	Type B Leaf Spring Nut	M8	4	
6	94.7180812	Square Neck Bolt	M8×20	4	
7	94.7010837	Hex Bolt	M8×35	2	
8	94.7030413	Pop Rivet	Φ4.8×12	6	
9	94.1014340	Connecting Shaft		1	
10	94.7131806	D pin		2	
11	94.4060416-ZH1P6006	Right Connecting Plate		1	
12	94.7010838	Hex Flange Bolt	M8×25	1	
13	94.7120190	Spacer Sleeve		1	
14	90.ES310F	Seat		1	
15	94.4060412-ZH1P6006	Seat Plate		1	
16	94.7080470	Washer		4	
17	94.7020015A	Hex Lock Nut	5/16	4	
18	94.7010820	Hex Flange Bolt	M8×20	2	
19	94.7059381	Seat Spring		2	
20	94.4060414-ZH1P6006	Left Connecting Plate		1	
21	94.7010894	Hex Flange Bolt	M8×16	2	
22	94.4060414-ZH1P6006	Left Connecting Plate		1	
23	94.4060411-ZH1P6006	Seat Bottom Front Fender		1	
24	94.4060418	Limit plate		2	

9. 7. FUEL TANK ASSEMBLY



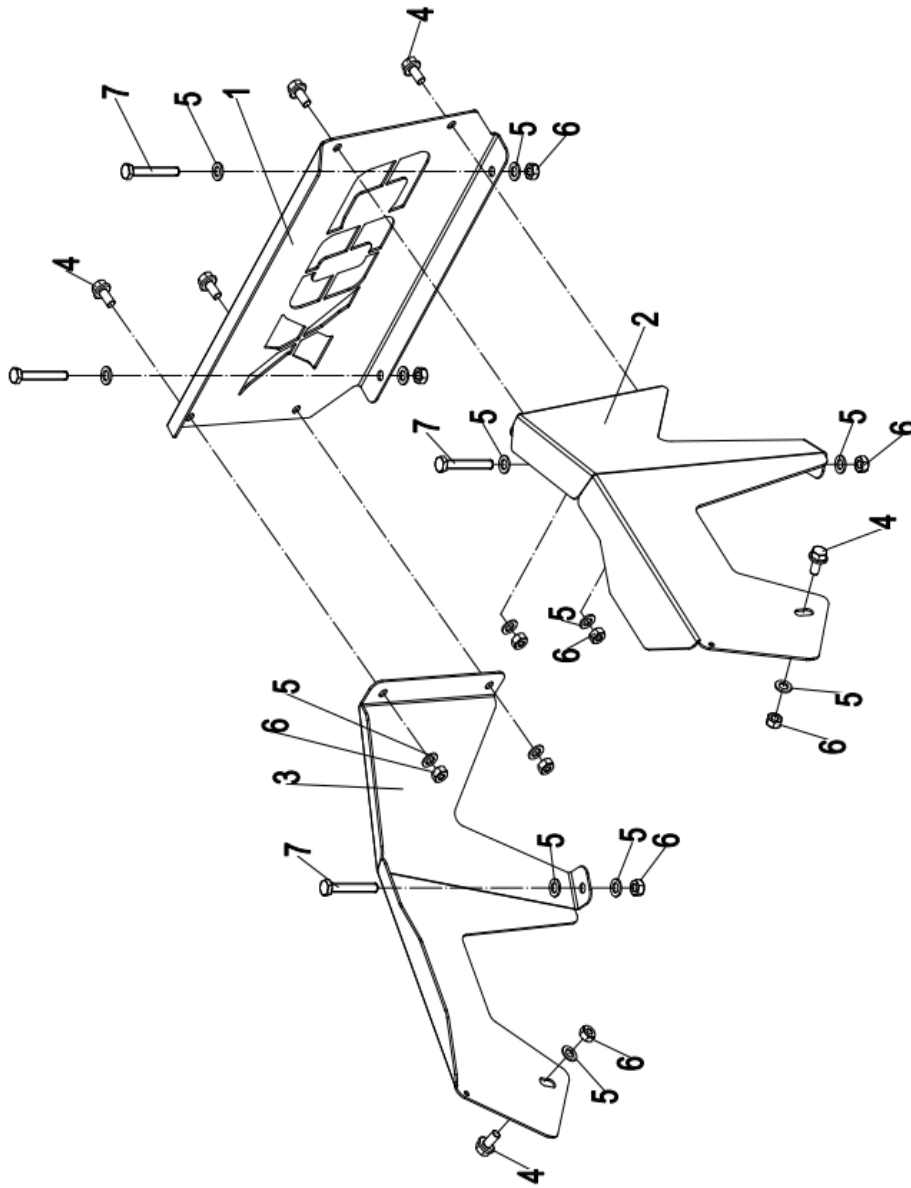
Item No.	Part No.	Description		Oty.	Others
1	94.2082260	Fuel Tank LHS		1	
2	94.2081031	EPA Fuel Cap		2	
3	94.2114608	Fuel Tank Liner		2	
4	94.CJT075	Dumping Valve		2	
5	94.2114605	Breather Hose		2	
6	94.7083440	Fuel Tank Gromet		2	
7	94.2133770	Elbow Fitting		2	
8	94.2114601	1/4"Fuel Line Hose		1	
9	94.9120001	Left Fuel Line Braiding		1	
10	94.7150170	Hose Clamp-Spring		6	
11	94.2128030	Tee Joint		2	
12	94.9120002	Right Fuel Line Braiding		1	
13	94.2114602	1/4" Fuel Line Hose		1	
14	94.2114603	1/4" Fuel Line Hose		1	
15	94.9010670	Fuel Valve		1	
16	94.2082270	Fuel Tank RHS		1	
17	90.JYT01225	Fuel Gauge		1	
18	94.4040001	Fuel Gauge Adapter		1	
19	94.4040002	Adapter Gasket		1	
20	94.7200666	Button Head Socket Screw	M6×12	4	
21	94.5072860A	Throttle Control		1	
22	94.7260507	Button Head Socket Screw	M5×12	2	
23	94.7020505A	Lock Nut	M5	2	
24	94.7010847	Hex Bolt	M8×16	8	
25	94.7040802	Lock Washer	Φ8	8	
26	94.7030813	Washer	Φ8	8	
27	94.7010652	Hex Bolt	M6×20	1	
28	94.7030601	Washer	Φ6	1	
29	94.7020602A	Lock Nut	M6	1	
30	94.21140607	Breather Hose Center		1	

9. 8. PEDAL ASSEMBLY



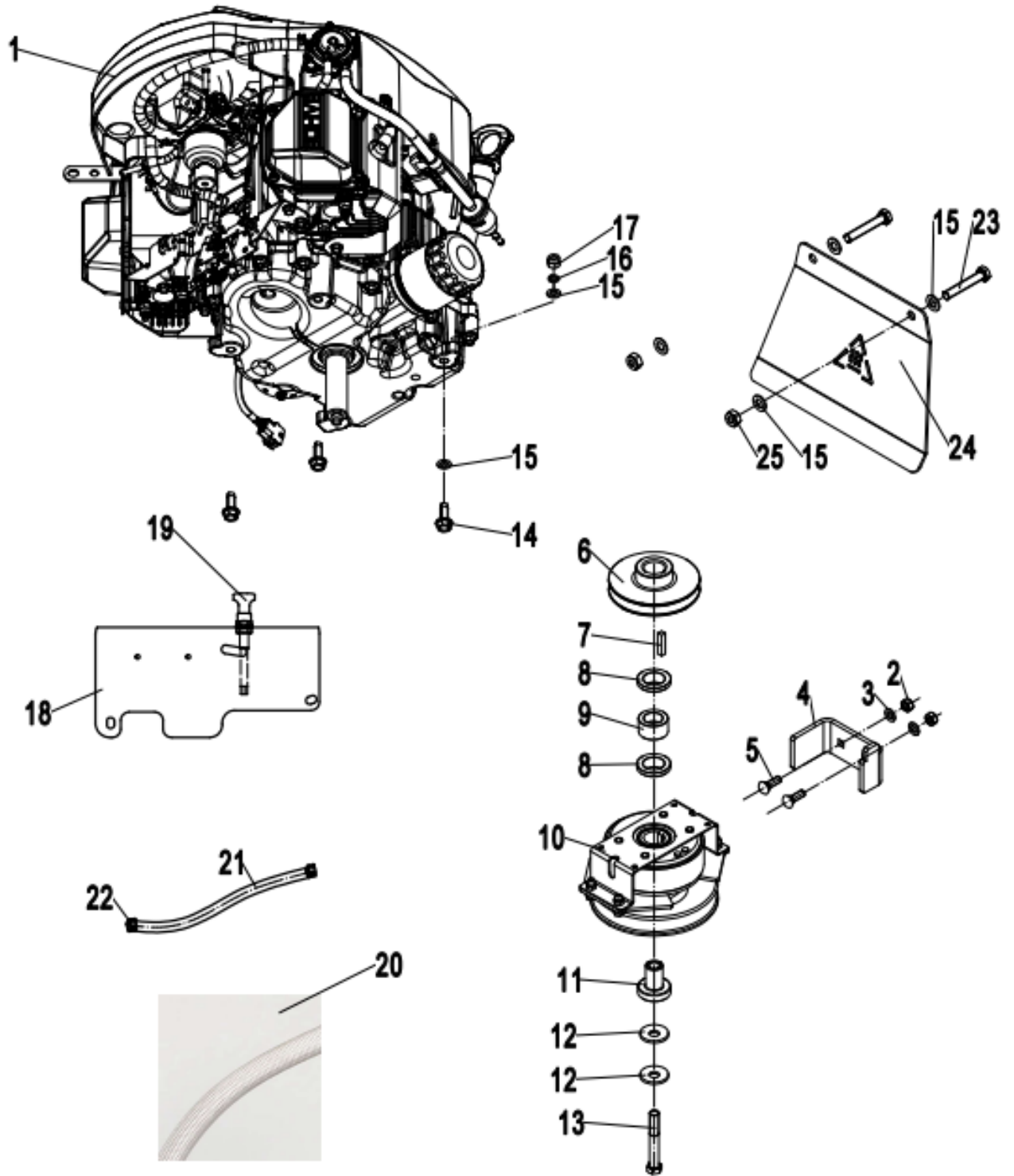
Item No.	Part No.	Description		Oty.	Others
1	94.4012941-CC067636B3JN	Foot Panel		1	
2	94.7020803A	Hex Nut	M8	2	
3	94.7083590	Spacer		2	
4	94.7030819	Washer	Φ8	2	
5	94.7010807	Hex Bolt	M8×60	2	

9. 9. REAR SHIELD ASSEMBLY



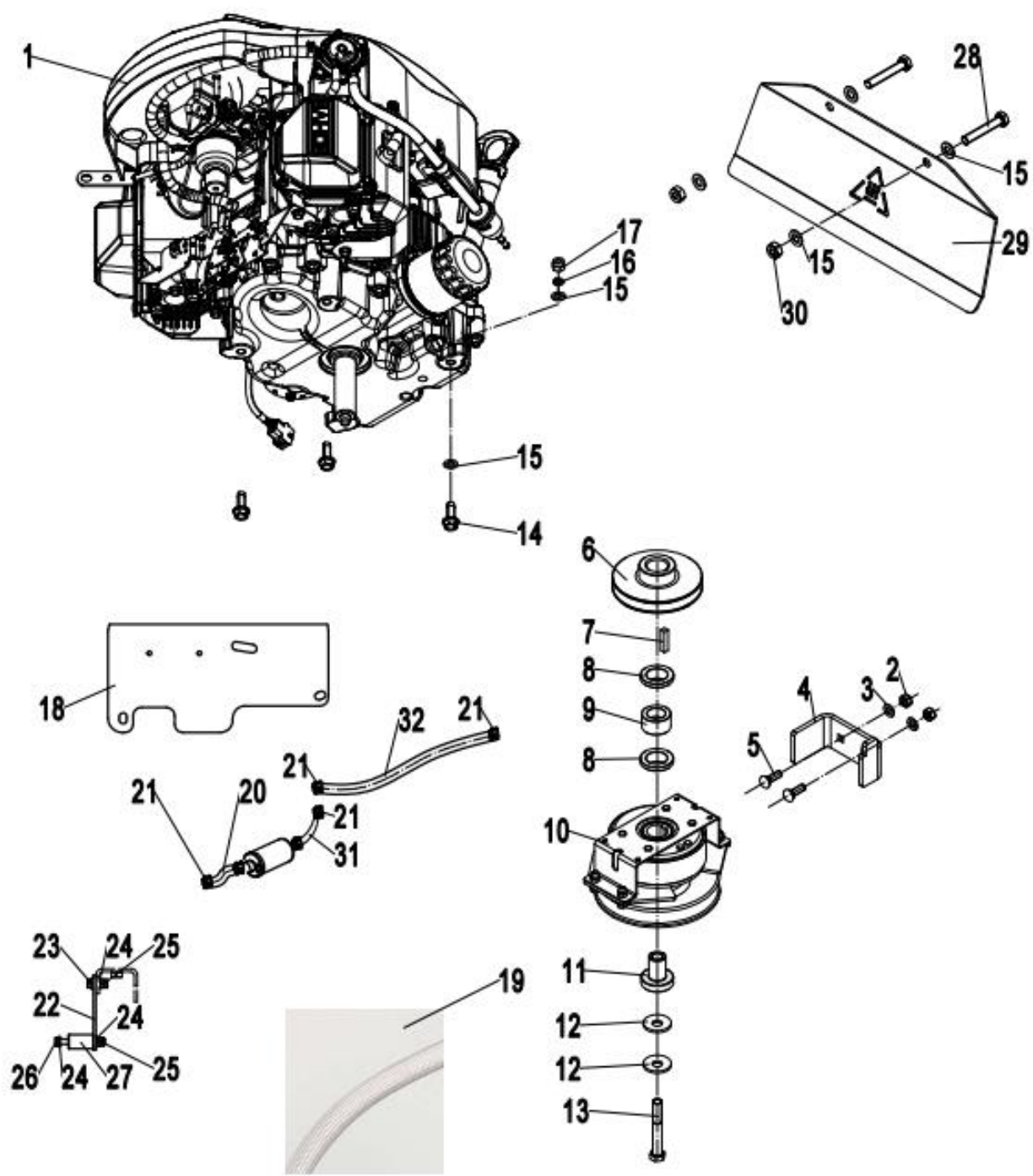
Item No.	Part No.	Description		Oty.	Others
1	94.4060061-ZH1P6006	Shield/Rear		1	
2	94.4060062-ZH1P6006	Left Rear Shield		1	
3	94.4060063-ZH1P6006	Right Rear Shield		1	
4	94.7010894	Hex Flange Bolt	M8×16	6	
5	94.7030819	Washer	Φ8	14	
6	94.7020803A	Hex Lock Nut	M8	10	
7	94.7010876	Hex Bolt	M8×55	4	
8	94.4060064-ZH1P6006	Muffler Guard		1	

9. 10. ENGINE ASSEMBLY



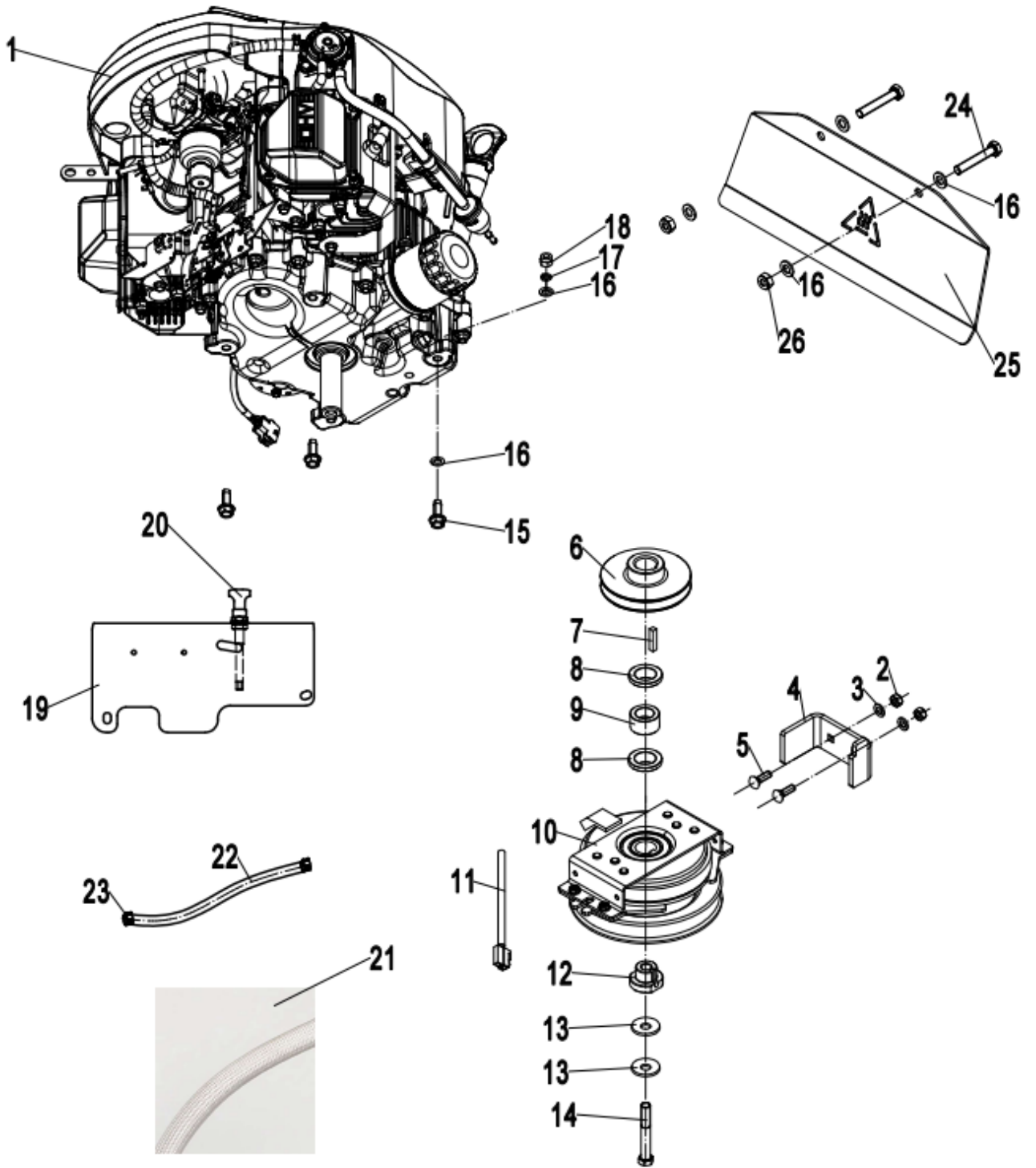
CZ24C42

Item No.	Part No.	Description		Oty.	Others
1	94.1TJZQC684	ENGINE		1	
2	94.7020803A	Hex Lock Nut	M8	2	
3	94.7030819	Washer	Φ8	2	
4	94.4221320-ZH1P6006	Clutch Stop		1	
5	94.7180818	Hex Bolt	M8×25	2	
6	94.1040021	A126 Pulley		1	
7	94.7110608A	Key	6.35×6.35×30	1	
8	94.4124390	Small Spacer		2	
9	94.7083470	Large Spacer		1	
10	94.7101430	Electromagnetic PTO Clutch		1	
11	94.4124400	Clutch Sleeve		1	
12	94.4071060	Clutch Plate		2	
13	94.7010075A	Imperial Bolt	7/16-20×3	1	
14	94.7011063	Hex Bolt	M10×45	4	
15	94.7031009	Washer	Φ10	12	
16	94.7041002	Lock Washer	Φ10	4	
17	94.7021012	Hex Lock Nut	M10	4	
18	94.6060025-ZH1P6006	Control Panel		1	
19	94.5072870	Throttle Line		1	
20	94.6631008	Cable Braiding		2	
21	94.2114612	Fuel Line Hose		1	
22	94.7150170	Spring Hose Clamp		2	
23	94.7011027	Hex Bolt	M10×60	2	
24	94.4060057-ZH1P6006	Muffler Guard		1	
25	94.7021004A	Hex Lock Nut	M10	2	



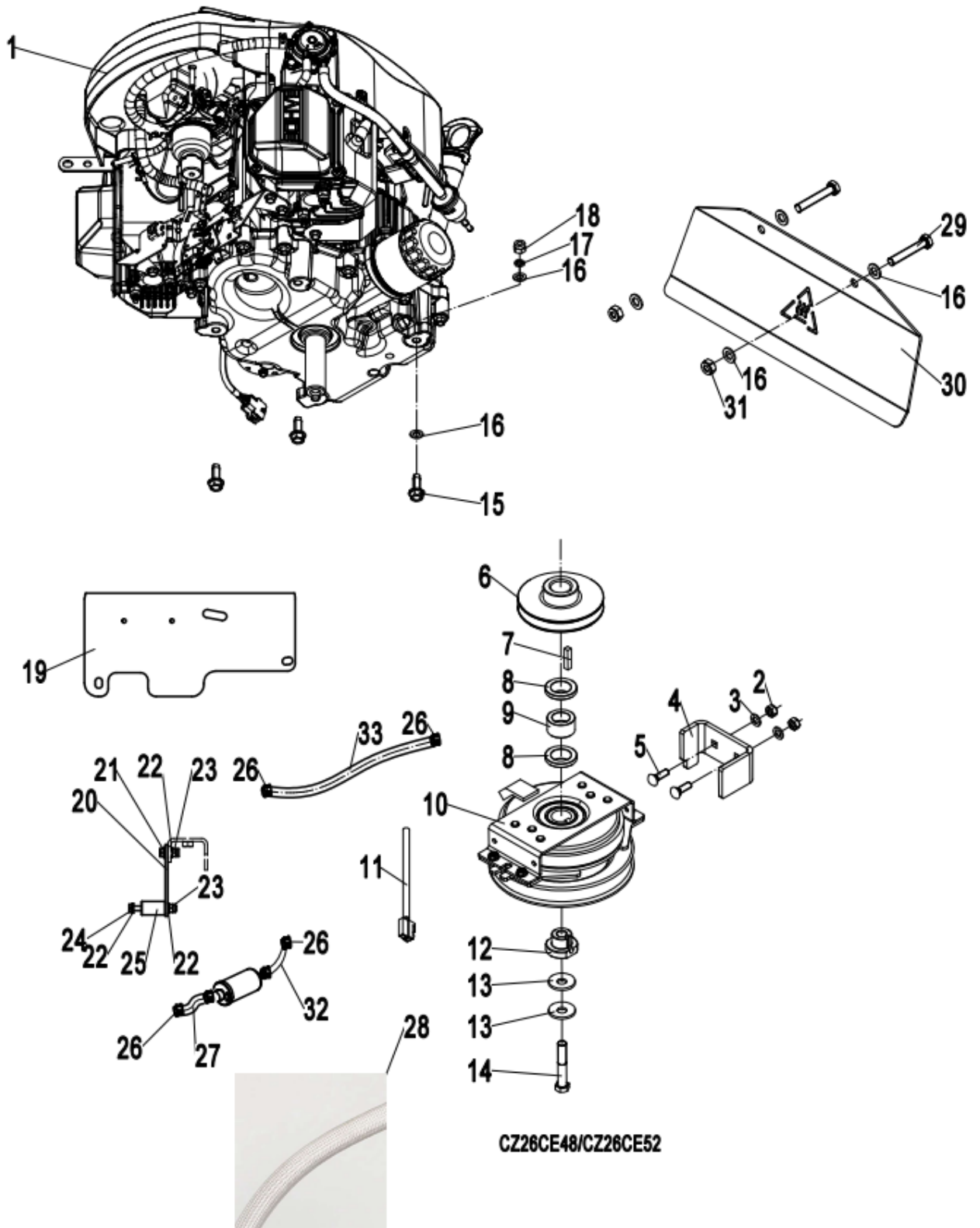
CZ26CE42

Item No.	Part No.	Description		Oty.	Others
1	94.1TJZQC755	ENGINE		1	
2	94.7020803A	Hex Lock Nut	M8	2	
3	94.7030819	Washer	Φ8	2	
4	94.4221320-ZH1P6006	Clutch Stop		1	
5	94.7180818	Hex Bolt	M8×25	2	
6	94.1040021	A126 Pulley		1	
7	94.7110608A	Key	6.35×6.35×30	1	
8	94.4124390	Small Spacer		2	
9	94.7083470	Large Spacer		1	
10	94.7101430	Electromagnetic PTO Clutch		1	
11	94.4124400	Clutch Sleeve		1	
12	94.4071060	Clutch Plate		2	
13	94.7010075A	Imperial Bolt	7/16-20×3	1	
14	94.7011063	Hex Bolt	M10×45	4	
15	94.7031009	Washer	Φ10	12	
16	94.7041002	Lock Washer	Φ10	4	
17	94.7021012	Hex Lock Nut	M10	4	
18	94.6060026-ZH1P6006	Control Panel		1	
19	94.6631008	Cable Braiding		1	
20	94.2114612	Fuel Line Hose		1	
21	94.7150170	Elastic Clamp		6	
22	94.4130005-ZH1P6006	Fixed Bracket		1	
23	94.7010674	Hex Bolt	M6×16	2	
24	94.7030601	Washer	Φ6	6	
25	94.7020602A	Hex Lock Nut	M6	4	
26	94.7010655	Hex Bolt	M6×55	2	
27	94.4130007	Spacer		2	
28	94.7011027	Hex Bolt	M10×60	2	
29	94.4060058-ZH1P6006	Muffler Guard		1	
30	94.7021004A	Hex Lock Nut	M10	2	
31	94.2114609	Fuel Line Hose		1	
32	94.2114604	Fuel Line Hose		1	



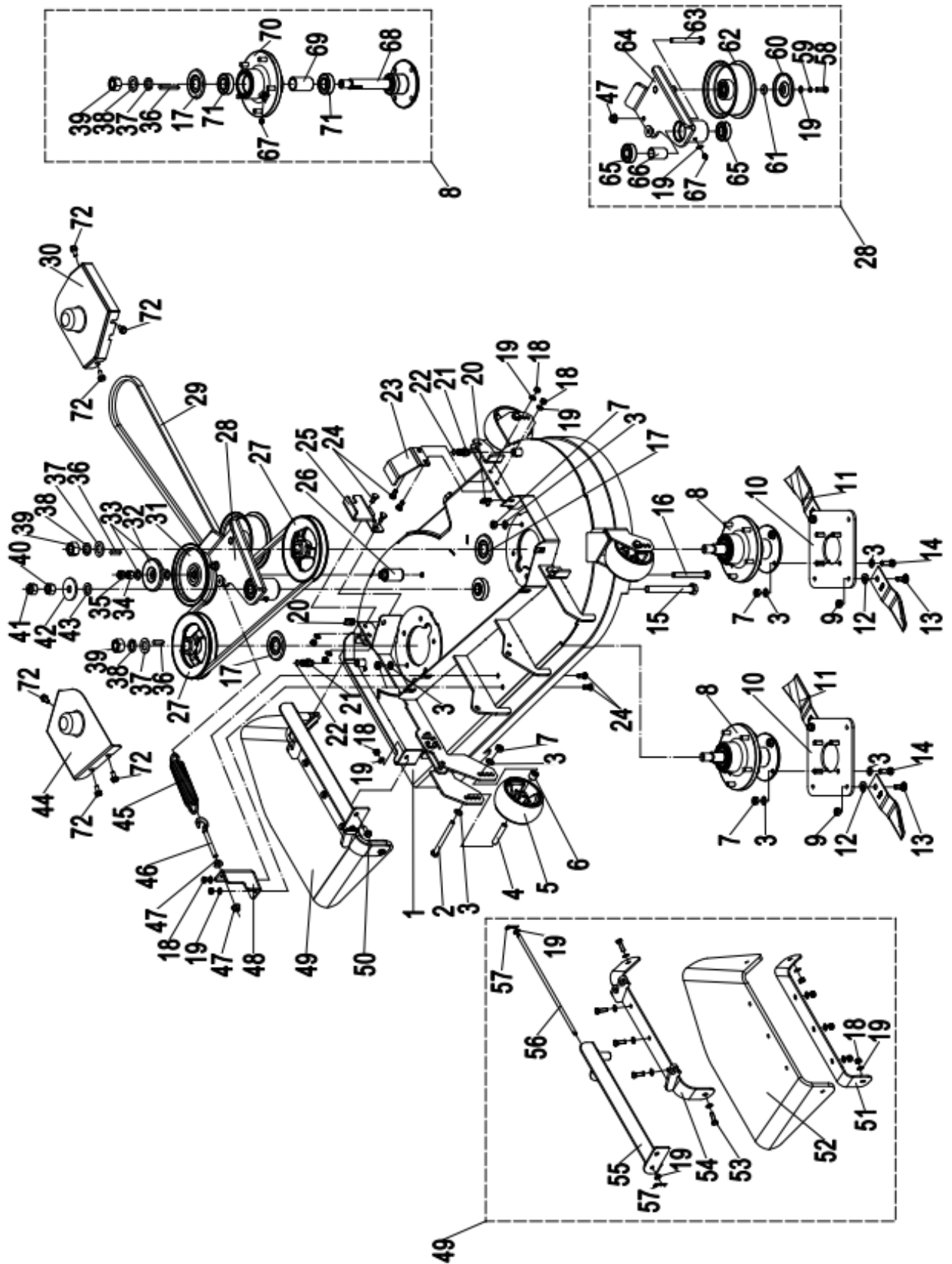
CZ26C48/ CZ26C52

Item No.	Part No.	Description		Oty.	Others
1	94.1TJZQC753	ENGINE		1	
2	94.7020803A	Hex Lock Nut	M8	2	
3	94.7030819	Washer	Φ8	2	
4	94.4221320-ZH1P6006	Clutch stop		1	
5	94.7180818	Hex Bolt	M8×25	2	
6	94.1040021	A126 Pulley		1	
7	94.7110608A	Key	6.35×6.35×30	1	
8	94.4124390	Small Spacer		2	
9	94.7083470	Large Spacer		1	
10	94.7101440	Electromagnetic PTO Clutch		1	
11	94.9054890	Transfer Harness		1	
12	94.4124420	Clutch Sleeve		1	
13	94.4071060	Clutch Plate		2	
14	94.7010140A	Imperial Bolt	7/16-20×2 1/2	1	
15	94.7011063	Hex Bolt	M10×45	4	
16	94.7031009	Washer	Φ10	12	
17	94.7041002	Lock Washer	Φ10	4	
18	94.7021012	Hex Lock Nut	M10	4	
19	94.6060025-ZH1P6006	Control panel		1	
20	94.5072870	Chock Switch		1	
21	94.6631008	Cable Braiding		2	
22	94.2114612	Fuel Line hose		1	
23	94.7150170	Spring Hose clamp		2	
24	94.7011027	Hex Bolt	M10×60	2	
25	94.4060058-ZH1P6006	Muffler Guard		1	
26	94.7021004A	Hex Lock Nut	M10	2	



Item No.	Part No.	Description		Oty.	Others
1	94.1TJZQC755	ENGINE		1	
2	94.7020803A	Hex Lock Nut	M8	2	
3	94.7030819	Washer	Φ8	2	
4	94.4221320-ZH1P6006	Clutch stop		1	
5	94.7180818	Hex Bolt	M8×25	2	
6	94.1040021	A126 Pulley		1	
7	94.7110608A	Key	6.35×6.35×30	1	
8	94.4124390	Small Spacer		2	
9	94.7083470	Large Spacer		1	
10	94.7101440	Electromagnetic PTO Clutch		1	
11	94.9054890	PTO Loom		1	
12	94.4124420	Clutch Sleeve		1	
13	94.4071060	Clutch Plate		2	
14	94.7010140A	Imperial Bolt	7/16-20×2 1/2	1	
15	94.7011063	Hex Bolt	M10×45	4	
16	94.7031009	Washer	Φ10	12	
17	94.7041002	Lock Washer	Φ10	4	
18	94.7021012	Hex Lock Nut	M10	4	
19	94.6060026-ZH1P6006	Control panel		1	
20	94.4130005	Fixed Bracket		1	
21	94.7010674	Hex Bolt	M6×16	2	
22	94.7030601	Washer	Φ6	6	
23	94.7020602A	Hex Lock Nut	M6	4	
24	94.7010655	Hex Bolt	M6×55	2	
25	94.4130007	Spacer		2	
26	94.7150170	Spring Hose Clamp		6	
27	94.2114612	Fuel Line Hose		1	
28	94.6631008	Cable Braiding		1	
29	94.7011027	Hex Bolt	M10×60	2	
30	94.4060058-ZH1P6006	Silencer Baffle		1	
31	94.7021004A	Hex Lock Nut	M10	2	
32	94.2114609	Fuel Line Hose		1	
33	94.2114604	Fuel Line Hose		1	

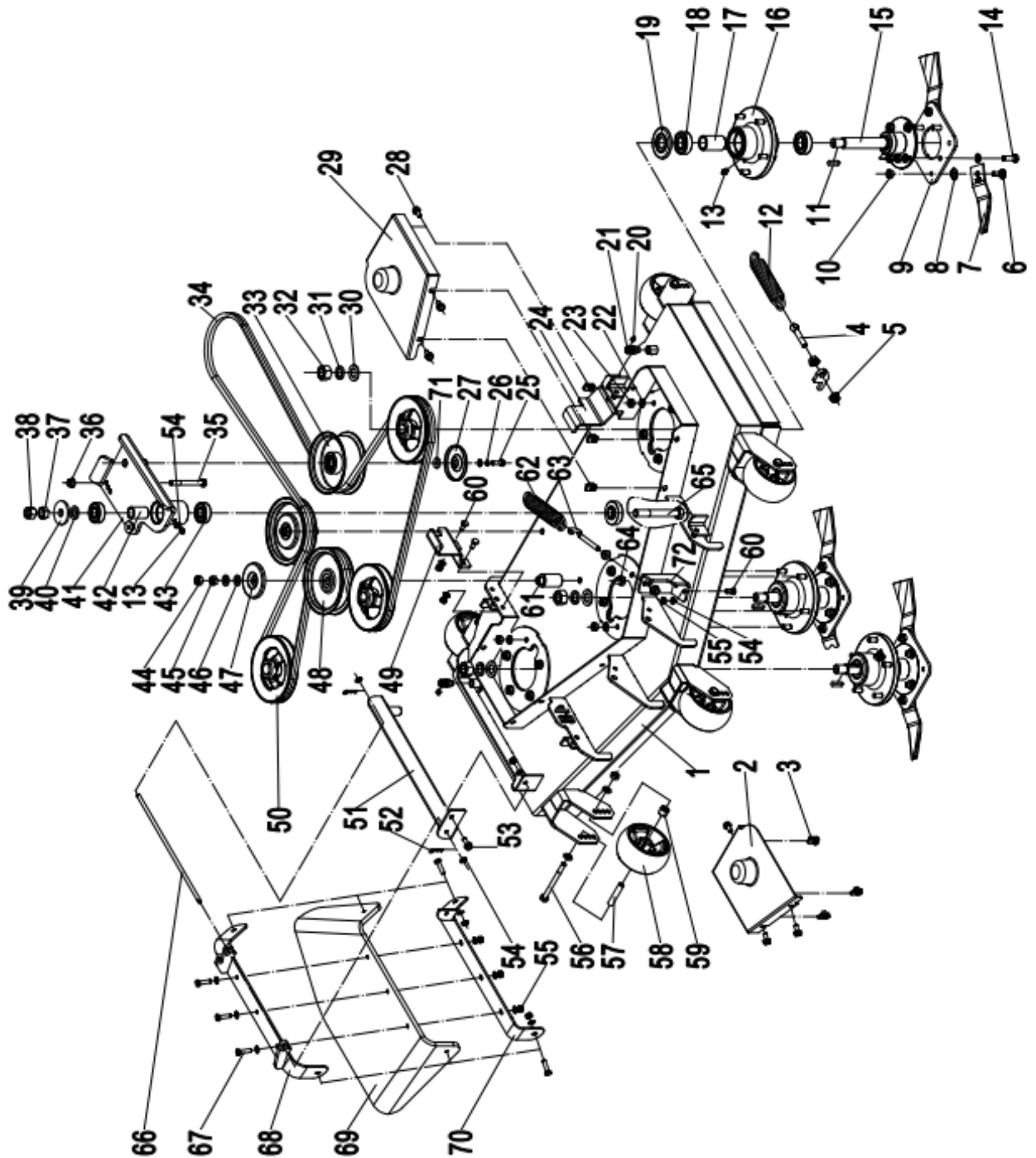
9. 11. 42" MOWING ATTACHMENT



Item No.	Part No.	Description		Qty.	Others
1	94.4241715-ZH4P6064	42" Mower Deck		1	
2	94.7011080	Hex Bolt	M10×110	3	
3	94.7031009	Washer	Φ10	32	
4	94.4240585	Spacer		3	
5	94.8011800	Anti-scalp Roller		3	
6	94.4262150-03	Spacer		3	
7	94.7021004A	Hex Lock Nut	M10	21	
8		Blade Spindle Assembly		2	
9	94.7021039	Hex Lock Nut	M10	4	
10	94.4241738-ZH4P6064	Blade Deck		2	
11	94.4241739	Blade		4	
12	94.4161000	Saddle Washer		4	
13	94.4241740	Hex Bolt		4	
14	94.7011095	Hex Bolt	M10×30	8	
15	94.4240021	Custom Bolt		1	
16	94.7011242	Hex Bolt	M12×100	1	
17	94.4065201	Dust Cover		2	
18	94.7020803A	Hex Lock Nut	M8	12	
19	94.7030819	Washer	Φ8	21	
20	94.7020820	Type B Leaf Spring Nut	M8	6	
21	94.2120000	Cleaning Hose Fitting		2	
22	94.7071008	Q- Ring	10×3-G	2	
23	94.4241746-ZH4P6064	Left Limit Device		1	
24	94.7180812	Hex Bolt		6	
25	94.4241747-ZH4P6064	Right Limit Device		1	
26	94.4241743	Pulley Standoff		1	
27	94.1041665	Spindle Pulley for 42"	175	2	
28		Idler Pulley Assembly		1	
29	94.1051001	Belt Bando B116		1	
30	94.4241736-ZH4P6064	Belt Guard LH		1	
31	94.1041690	Fixed Pulley		1	
32	94.4061205	Dust Cover		1	
33	94.7031221	Washer	Φ12	2	
34	94.7021201	Hex Nut	M12	1	
35	94.7021204A	Hex Lock Nut	M12	1	
36	94.7110803	Square Key	8×7×30	2	
37	94.7032006	Washer	Φ20	2	

Item No.	Part No.	Description		Qty.	Others
38	94.7042003	Lock Washer	Φ20	2	
39	94.7022004	Hex Nut	M20×1.5	2	
40	94.7021607	Hex Nut	M16	1	
41	94.7021603	Hex Lock Nut	M16	1	
42	94.7031613	Large Washer	Φ16	1	
43	94.7031602	Washer	Φ16	1	
44	94.4241750-ZH4P6064	Belt Guard RH		1	
45	94.7059750	Idler Pulley Spring		1	
46	94.7181005	Hook Bolt	M10×70	1	
47	94.7021018	Nyloc Nut	M10	3	
48	94.4241744-ZH4P6064	Spring Holder		1	
49	94.4065330	Discharge Rubber Guard Assembly		1	
50	94.7010820	Hex Bolt	M8×20	1	
51	94.4151730-ZH4P6064	Mount Plate/Lower		1	
52	94.4065070	Rubber Guard		1	
53	94.7010893	Hex Bolt	M8×30	5	
54	94.4157270-ZH4P6064	Mount Plate Upper		1	
55	94.4301460-ZH4P6064	Discharge Shoot Mount		1	
56	94.1014340	Pivot Shaft		1	
57	94.7131806	D Pin		2	
58	94.7010821	Hex Bolt	M8×25	1	
59	94.7040802	Lock Washer	Φ8	1	
60	94.4241745-ZH4P6064	Dust Cover		1	
61	94.7030813	Washer		1	
62	94.1041710	Idler Pulley		1	
63	94.7011069	Hex Bolt	M10×90	1	
64	94.4241741-ZH4P6064	Dynamic tensioning arm		1	
65	94.7060401	Deep Groove Ball Bearing	6204-2RZ-HRB	2	
66	94.4240022	Spacer		1	
67	94.7320020	Grease Zerk	M8×1	3	
68	94.4241737-ZH4P6064	Spindle Shaft		2	
69	94.4123960	Bearing Spacer		2	
70	94.4070590	Spindle Housing		2	
71	94.7061232	Deep Groove Ball Bearing	6205-DDU	4	
72	94.7010894	Hex Bolt	M8×16	6	

9.12. 48" & 52" MOWING ATTACHMENT

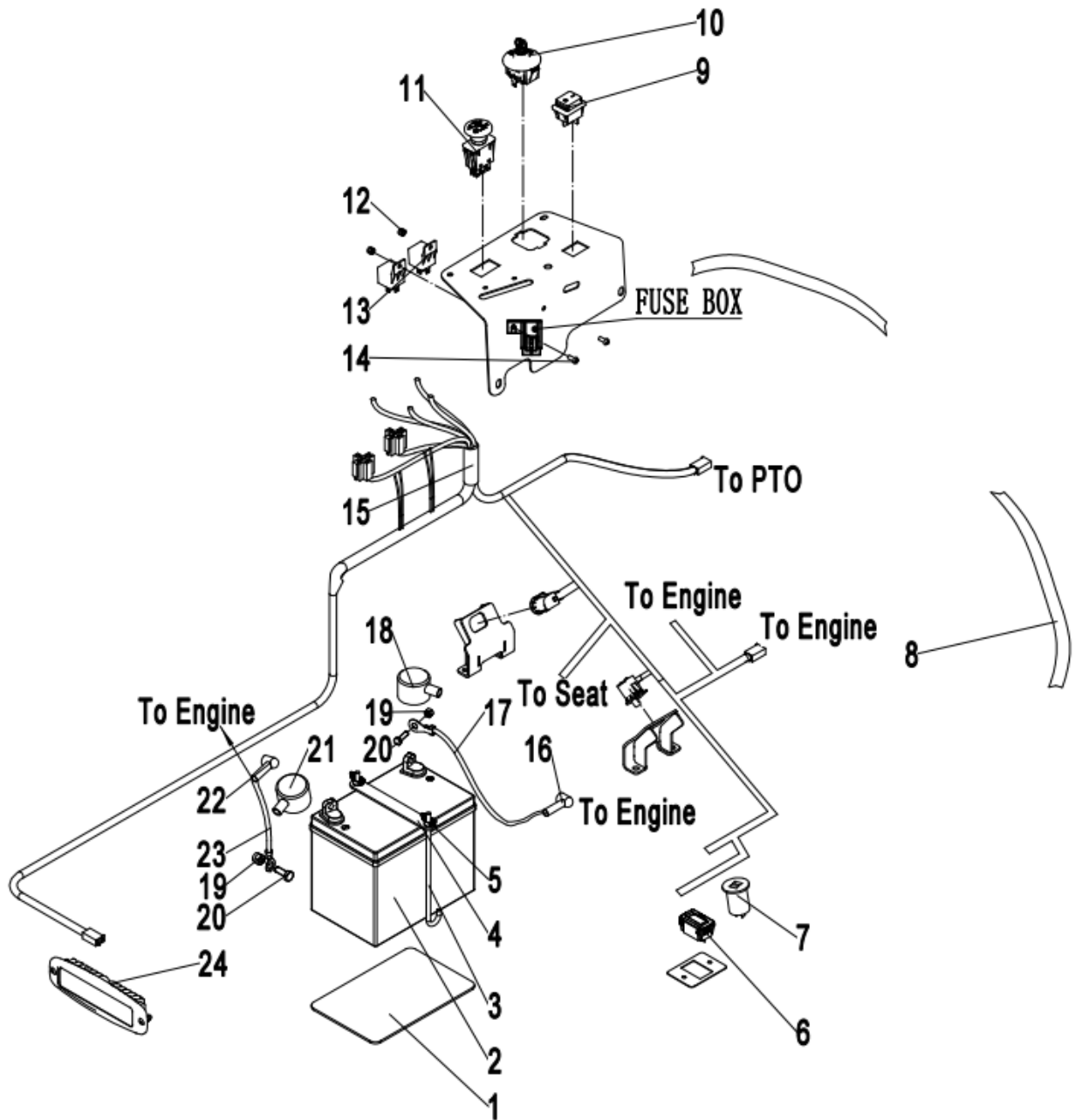


Item No.	Part No.	Description	Qty.	Others
1	94.4241725-ZH4P6064	48" Mower Deck	1	48"
	94.4241735-ZH4P6064	52" Mower Deck	1	52"
2	94.4241730-ZH4P6064	Belt Guard RH	1	

Item No.	Part No.	Description		Qty.	Others
3	94.7020820	Leaf Springs Nut	M8	6	
4	94.7291260	Hook bolt	M12×60	1	
5	94.7021242	Hexagon Flange Nuts	M12	2	
6	94.4241740	Swing Blade Bolt		6	
7	94.4241749	Blade 137		6	
8	94.4161000	Saddle Shaped Washer		6	
9	94.4241732-ZH4P6064	Swing Blade Installation Plate		3	48"
	94.4241751-ZH4P6064	Swing Blade Installation Plate		3	52"
10	94.7021039	Locking Nut	M10	6	
11	94.7110803	Square Key	8×7×30	3	
12	94.7059750	Idler Pulley Spring		1	
13	94.7320020	Grease Zerk	M8×1	3	
14	94.7011095	Hex Bolt	M10×30	12	
15	94.4241737-ZH4P6064	Cutter Shaft		3	
16	94.4070590	Blade Spindle Assembly		3	
17	94.4123960	Spacer Sleeve		3	
18	94.7061232	Deep Groove Ball Bearing	6205-DDU	6	
19	94.4065201	Dust Cover		3	
20	94.7071008	O-ring	Φ10×3	2	
21	94.2120000	Cleaning Hose Fitting		2	
22	94.7031009	Washer	Φ10	49	
23	94.7021004A	Hex Lock Nut	M10	32	
24	94.4060059-ZH4P6064	Deck Left Limit Plate		1	
25	94.7010821	Hex Bolt	M8×25	1	
26	94.7040802	Lock Washer	Φ8	1	
27	94.4061205-ZH4P6064	Dust Cover		1	
28	94.7010894	Hex Flange Bolt	M8×16	6	
29	94.4241731-ZH4P6064	Belt Guard LH		1	
30	94.7032006	Washer	Φ20	3	
31	94.7042003	Lock Washer	Φ20	3	
32	94.7022004	Hex Nut	M20×1.5	3	
33	94.1041710	Idler Pulley		1	
34	94.1051004	Belt Bando SB147		1	
35	94.7011069	Hex Bolt	M10×90	1	
36	94.7021018	Flange nut	M10	3	
37	94.7021607	Hex Nut	M16	1	
38	94.7021603	Hex Lock Nut	M16	1	
39	94.7031613	Large washer	Φ16	1	

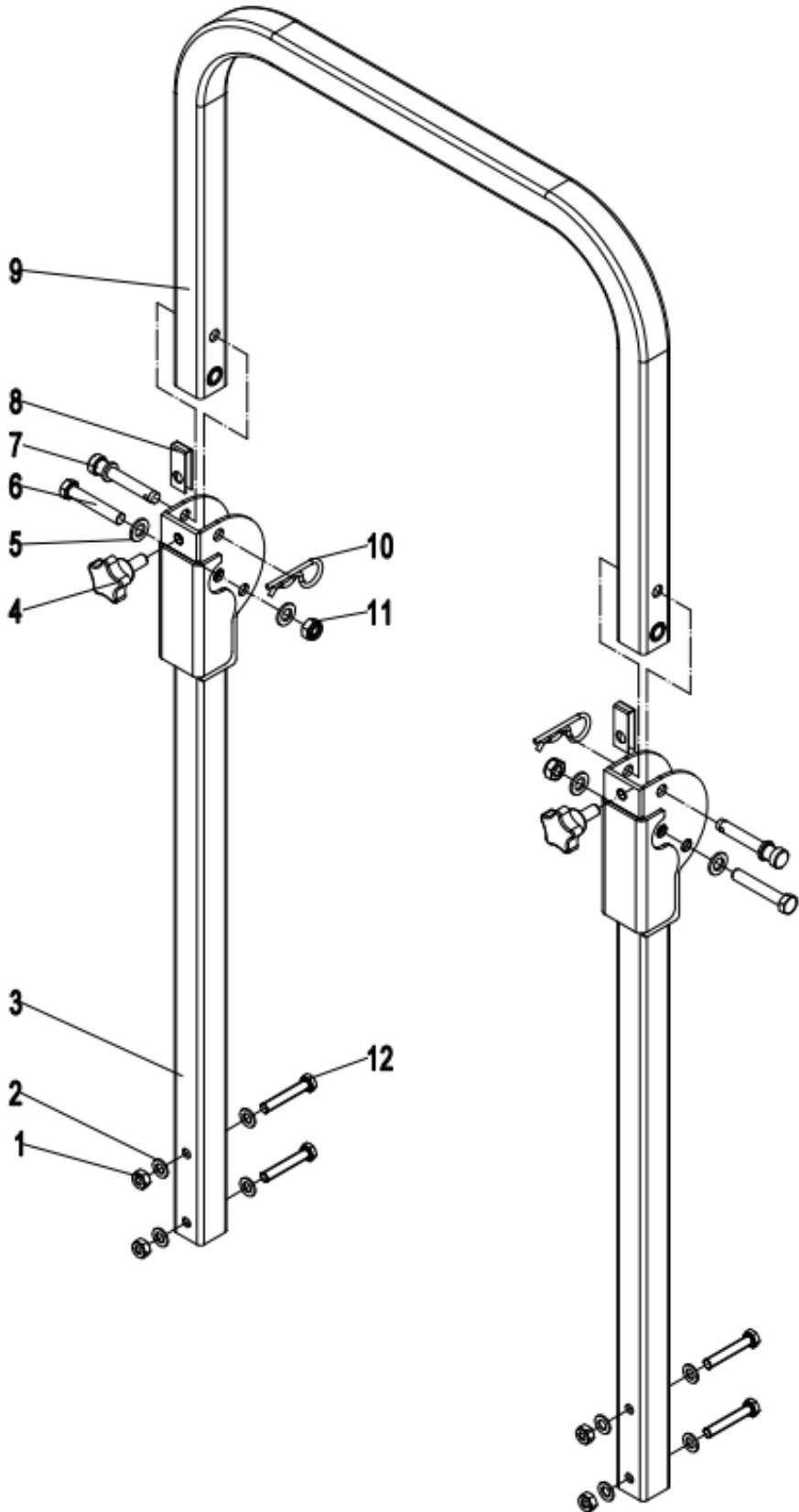
Item No.	Part No.	Description		Qty.	Others
40	94.7031602	Washer	Φ16	1	
41	94.4241729-ZH4P6064	Dynamic Tensioning Arm		1	
42	94.4240022	Spacer		1	
43	94.7060401	Deep Groove Ball Bearing	6204-2RZ-HRB	2	
44	94.7021204A	Hex Lock Nut	M12	2	
45	94.7021201	Hex Nut	M12	2	
46	94.7031221	Washer	Φ12	4	
47	94.4241745-ZH4P6064	Dust Cover		2	
48	94.1041690	Fixed Pulley		2	
49	94.4241747-ZH4P6064	Deck Right Limit Plate		1	
50	94.1042105	Spindle Pulley for 48"/52"	164	3	
51	94.4301460-ZH4P6064	Mount Discharge Shield		1	
52	94.7131806	D-Pin		2	
53	94.7010820	Hex Flange Bolt	M8×20	1	
54	94.7030819	Washer	Φ8	20	
55	94.7020803A	Hex Lock Nut	M8	10	
56	94.7011080	Hex Bolt	M10×110	5	
57	94.4262150-03	Anti-scalp Roller Shaft		5	
58	94.8011800	Anti-scalp Roller		5	
59	94.4240585	Spacer Sleeve		5	
60	94.7180812	Square Neck Bolt	M8×20	4	
61	94.4241743	Idler Shaft		2	
62	94.7059750	Idler Pulley Spring		1	
63	94.7181005	Hook Bolt	M10×70	1	
64	94.7011242	Hex Bolt	M12×100	2	
65	94.4240021	Custom Bolt		1	
66	94.1014340	Pivot Shaft		1	
67	94.7010893	Hex Bolt	M8×30	5	
68	94.4157270-ZH4P6064	Mount Plate Upper		1	
69	94.4065070	Rubber Guard		1	
70	94.4151730-ZH4P6064	Mount Plate/Lower		1	
71	94.7030813	Washer	Φ8	1	
72	94.4241744-ZH4P6064	Spring holder		1	

9. 13. ELECTRICAL ASSEMBLY



Item No.	Part No.	Description		Oty.	Others
1	94.5041160	Battery Cushion		1	
2		12V Battery		1	Buy locally
3	94.4181281	Battery Hold Down Strap Rod		2	
4	94.4152270-ZH1P6006	Battery Hold Down Plate		1	
5	94.7020606	Wing Nut	M6	2	
6	94.6631006	Hour Meter		1	
7	94.6631007	USB Charger		1	
8	94.6637300	Conduit		2	
9	94.2117431	LED Light Switch		1	
10	94.E72919-1	Ignition Switch		1	
11	94.9010548	PTO Clutch Switch		1	
12	94.7020505A	Hex Lock Nut	M5	2	
13	94.9021001	Relay		2	
14	94.7260507	Button Socket Screw	M5×12	2	
15	94.2401356	Main Harness		1	
16	94.6631003	Terminal Cover Red		1	
17	94.2401355	Positive Pole Cable		1	
18	94.6631002	Large Terminal cover - Red		1	
19	94.7020602A	Hex Lock Nut	M6	4	
20	94.7010662	Hex Bolt	M6×16	2	
21	94.6631001	Black Large Terminal Cover		1	
22	94.6631005	Black terminal Cover		1	
23	94.2401351	Negative Pole Cable		1	
24	94.4110644	LED lights		1	

9. 14. ROPS ASSEMBLY (Optional)



Item No.	Part No.	Description		Oty.	Others
1	94.7021004A	Hex Lock Nut	M10	4	
2	94.7031009	Washer	Φ10	8	
3	94.4260843-ZH1P6006	Lower Anti Roll Frame		2	
4	94.5013230	Star Shaped Handle		2	
5	94.7031221	Washer	Φ12	4	
6	94.7011251	Hex Bolt	M12×70	2	
7	94.7133221	Locking Pin Shaft		2	
8	94.4162520-ZH1P6006	U-shaped Spring		2	
9	94.4260842-ZH1P6006	Upper Anti Roll Frame		1	
10	94.7133130	R Pin	Φ4.5×80	2	
11	94.7021204A	Hex Lock Nut	M12	2	
12	94.7011027	Hex Bolt	M10×60	4	

9. 15. **DECALS ASSEMBLY**

Item No.	Part No.	Description		Oty.	Others
1	94.6069923	Walking RH	87×50	1	
2	94.6069922	Walking LH	87×50	1	
3	94.6069927	Throttle	53×15	1	
4	94.6069750	Mode Change LH	69×44	1	
5	94.6069760	Mode Change RH	69×44	1	
6	94.6069430	Warning 5	44.5×25.4	2	
7	94.6069680	Fuel Tank	53×38	2	
8	94.6069450	Warning 7	101.6×82.5	2	
9	94.6069410	Warning 3	108×63.5	1	
10	94.6069420	Warning 4	82.5×21.5	2	
11	94.6051016	COX Fuel Tank LH	264×110	1	
12	94.6051017	COX Fuel Tank RH	264×110	1	
13	94.6051018	COX Front	486×134	1	
14	94.6069700	42" Belt	90×70	1	42"
15	94.6069730	42" Cutting Deck	95×57.5	1	42"
16	94.6051019	COX Warning	500×129	1	
17	94.6060985	Cutting Deck (belt)	110×125	1	48"&52"
18	94.6069890	48" Cutting Deck	95×57.5	1	48"
19	94.6069560	52" Cutting Deck	95×57.5	1	52"
20	94.6051021	COX Aluminum Nameplate	90×50	1	
21	94.6061002	COX Height Adjuster	63×35	1	
22	94.6061001	3S Starter EFI	68.5×52.5	1	EFI
23	94.6069770	ROPS	150×32	1	optional



Cox Industries (Australia) Pty Ltd

Web Site Address: <https://coxmowers.com.au>

Email: sales@coxmowers.com.au