



**ECONOMY**  
**RIDE-ON MOWER**  
**11.5HP (MODEL 4398H)**  
**13HP (MODEL 4398H)**

**OWNER/OPERATORS MANUAL**

READ THIS MANUAL BEFORE OPERATING MACHINE

DEATH, PERSONAL INJURY AND/OR PROPERTY DAMAGE MAY OCCUR UNLESS INSTRUCTIONS  
IN THIS MANUAL ARE FOLLOWED

NOTE: Bring this service book when Warranty work is required.

## OWNERS INFORMATION

MACHINE MODEL NO: \_\_\_\_\_

SERIAL NO \_\_\_\_\_

Located on label inside transmission housing

ENGINE MODEL NO: \_\_\_\_\_ TYPE \_\_\_\_\_ CODE \_\_\_\_\_

Located on engine (refer engine owners manual)

DATE OF PURCHASE: \_\_\_\_\_

### ISSUED TO:

OWNERS NAME: \_\_\_\_\_

ADDRESS: \_\_\_\_\_

TOWN/CITY: \_\_\_\_\_ STATE: \_\_\_\_\_

### ISSUED BY:

AUTHORISED COX  
DEALER/DISTRIBUTOR: \_\_\_\_\_

ADDRESS: \_\_\_\_\_

TOWN/CITY: \_\_\_\_\_ STATE: \_\_\_\_\_

### PRE DELIVERY CHECK LIST

1. Check parts
2. Assemble
3. Service
4. Instruction

**ALWAYS KEEP THIS MANUAL IN A SAFE PLACE.**

# FOREWORD

To ensure continued efficiency of your Cox Ride-on Mower, regular maintenance at periodic intervals is essential. For your guidance this booklet contains schedules applicable to the maintenance required at the appropriate times, and a service record.

## IMPORTANT

If operating in conditions such as those mentioned below, engine oil, air filtering, chassis lubrication, greasing and adjustments should be serviced at more frequent intervals than specified in this booklet.

- a) Mowing in damp or wet conditions.
- b) Mowing in rough or dusty conditions.

c) Mowing in hilly areas under heavy load.

## WARRANTY SERVICE PROBLEM:

Purchase Date of machine must be given before warranty will be accepted for processing. In the event of a need for warranty service contact your local Authorised Cox Dealer/Distributor.

## WARRANTY REGISTRATION:

The warranty registration card must be completed by the dealer with the customer at the time of purchase and returned to Cox Industries or an authorised Dealer/Distributor within 14 days.

# SAFETY INSTRUCTIONS

- \* Read, understand, & follow all instructions in the Owner/Operators manual.
- \* Know the controls and how to stop the engine quickly in an emergency.
- \* Allow only responsible adults, who are familiar with the instructions in this manual, to operate the machine.
- \* Clear the area to be mowed of loose objects such as sticks, stones, bones, wire, toys, debris, etc., which could be picked up and thrown by the blades.
- \* DO NOT mow whilst people, especially children, or pets are in the mowing area.
- \* Exercise extreme caution on slopes.
- \* Reduce speed on slopes and in sharp turns to prevent overturning or loss of control.
- \* Start or stop slowly when on slopes.
- \* Mow up and down slopes, not across the slope.
- \* Stay alert for holes or bumps in the terrain and other hidden hazards.
- \* Use care when pulling loads-  
Use only approved hitch point; limit loads to those you can safely control; Do not turn sharply; use care when backing up.
- \* Watch out for traffic when crossing or operating the mower near roadways.
- \* Stop the blades rotating before crossing surfaces other than grass.
- \* When using attachments, never direct discharge of material toward bystanders nor allow anyone near the machine while it is in operation.
- \* Before leaving the operators position-  
Disengage all clutches and secure cutting units; Return drive pedal to neutral position and set the parking brake; Stop the engine and remove the key.
- \* Disengage drive to attachments and stop engine-  
Before re-fueling. Before removing grass-catcher; Before clearing blockages from chute; Before checking, cleaning or working on the mower; After striking a foreign object (check the mower for damage and make repairs before restarting and operating the equipment)
- \* If machine starts to vibrate abnormally (check immediately).
- \* Disengage drive to attachments when transporting or not in use.
- \* A mower operator should be in good physical and mental health and not under the influence of alcohol or any drug which might impair vision, co-ordination or judgment.
- \* Never mow, while barefoot or wearing open sandals or thongs. Wear long trousers and heavy shoes.
- \* It is advisable to wear suitable eye protection when operating a mower.
- \* Mow only in daylight or good artificial light.
- \* Before using, always visually inspect to see that blades, bolts and cutter assembly are not worn or damaged. Replace worn or damaged blades and bolts in sets to preserve balance.
- \* Check all nuts, bolts, and screws often; always be sure the mower is in safe operating condition.
- \* Keep safety devices (guards and switches) in place and in working order.
- \* Never use the mower unless the grass catcher, or guards provided by the manufacturer, are in position.
- \* Ensure any replacement parts used comply with the original manufacture's recommendations and specifications.
- \* Replace worn or faulty silencers.
- \* Keep machine free of grass, leaves or other debris, excessive oil, grease, or spill fuel. These can be a fire hazard.
- \* Refuel outdoors only. Do not smoke while fueling engine. Never remove the cap of the fuel tank or add petrol while the engine is running or the engine is hot. Remove fuel cap slowly to relieve any tank pressure. If fuel is spilled, do not attempt to start the engine but move machine away from the area of the spill and avoid creating any source of ignition until fuel vapors have dissipated.
- \* Check for fuel leaks while refueling, before and while using the mower. If a fuel leak is found, do not start or run the engine until the fuel leak is fixed and spilled fuel is wiped away.
- \* Do not operate engine in a confined space where exhaust fumes (carbon monoxide) can collect.
- \* Start the engine carefully with the cutting means disengaged.
- \* Do not over-speed the engine or alter governor settings. Excessive speed is dangerous and shortens mower life.
- \* Stop the engine whenever you leave the mower, even for a moment.
- \* Store the mower in a well-ventilated room away from naked flames such as may be found in hot water heaters.
- \* Do not lend or sell the mower, without the owners/operators Manual.

# PRE-DELIVERY

## INTRODUCTION:

The purpose of this procedure is to ensure the dealer/distributor has made the necessary installations, adjustments and checks, before the machine is operational. This procedure begins upon receiving the crated mower and is finalised once the mower has been either sold or leaves the dealer/distributors premises. This is the minimum amount of work required, however it should not be limited to only the areas detailed in this procedure.

## RESPONSIBILITY:

It is the responsibility of the dealer/distributors to ensure that before a machine is delivered to a customer, it is in perfect operational condition.

## PROCEDURE:

### CHECK ACCESSORIES SUPPLIED IN SEAT PROTECTION BAG

- Engine owners manual
- Owner/Operator manual
- Tube spanner (AM006C1)
- Tommy bar (AM007)
- Ignition keys (AM015)
- Spark plug spanner (AM005G0)
- Steering wheel (AM167M8)
- Steering wheel emblem (AM225)
- Clutch Clearance Gauges x 2 (13126)

Remove the four seat bolts, shakeproof washers and plain washers to remove the plastic bag protection from around seat. Install the four seat bolts, shakeproof washers and plain washers, making sure that the seat is adjusted into the desired position by using the seat transmission slots, tighten bolts.

## CHARGING THE BATTERY

Undo the battery clamp screw and nut and remove both clamps, lift battery cover from battery. Remove the tape covering the fill holes in the battery. Fill each cell of the battery until the acid levels are in between the upper and lower levels marked on the battery, (use 1.240-1.260 specific gravity) Using a 12V, 4 or 8amp battery charger, charge the battery for a period of 30 minutes.

After the charge proceed to do the following:

- Check acid levels in all battery cells (top up if necessary).
- Install battery caps. Allow battery to stand for 30 minutes before usage.

Tighten the red battery lead to the positive terminal first and then the black battery lead to the negative terminal.

Place battery in position, make sure battery leads are well clear of the steering universal, and fit battery cover. Place both battery clamps over battery and tighten the battery clamp screw and nut.

## TYRE PRESSURE

Before operation ensure that all tyre pressures are equal. The maximum pressure allowed is 140 kpa (20 P.S.I.).

## ENGINE OIL

Before operation ensure that engine oil level is to the full mark on the dipstick. (Check engine owners manual if oil needs to be added).

## FUEL TAP

Ensure the in line fuel tap under the fuel tank is turned to the on position before attempting to start engine. (Use unleaded fuel only).  
Turn off fuel tap after use.

## STEERING WHEEL

Using the tommy bar (AM007) and tube spanner (AM006C1) supplied, tighten the steering wheel using the nut and washer attached to the steering shaft. Torque setting for the steering wheel nut is 20Nm (180Lbf in).

Align the three locating pins in the steering emblem with the holes supplied in the steering wheel, press the steering emblem in using hand pressure only.

## SEAT SPRINGS

Install and tighten the two seat springs, bolts and nuts to the triangular brackets welded to the chassis, which are situated under the seat transmission,

## CLUTCH PLATE ADJUSTMENT

Engage and disengage the cutter lever a few times and leave in the engaged position, this will centre the clutch arm assembly into the neutral position. Loosen the four square head set screws on the clutch plates using tube spanner (AM006C1) and tommy bar (AM007). Insert the clearance gauges supplied, one between the forward clutch plate and cone and the other between the reverse clutch plate and cone and hook them onto the intershaft. Slide both clutch plates against the clearance gauges and clutch cone, tighten the set screws firmly onto the flat on the intershaft. Remove gauges.

## MICRO (SAFETY) SWITCHES

Foot micro - With cutter lever disengaged, attempt to start the engine without using the foot micro switch. Engine should not start.

Disengagement micro - While sitting on machine with foot on micro switch and cutter engaged, attempt to start machine. Engine should not start.

Seat micro - While sitting on machine start engine, engage cutter and lift weight from seat. Engine should cut out.

## Rear Discharge Grass Catcher Assembly and Mounting Instructions for 13HP 30" Rear Discharge Model Only

1/ Place the frame with the short tubes facing up, on a level surface.

2/ Fit the lower plain tube bow over the two tubes that lean inwards.

Note: Make sure the two drilled holes on the sides of the bow are also facing inwards as the spreader rods fit into these.

Fit the upper tube bow (with welded bracket) over the outward facing frame tubes. Note: Spreader rod holes must face inwards.

3/ Install the spreader rods.

4/ Feed the bag over the assembled frame with the plain plastic to the plain tube bow (bottom of the catcher). Turn the catcher over and clip the bag onto the frame.

5/ Using a small soldering iron, melt through the mesh at the four bolt holes in the top of the frame to suit the handle bolts.

6/ Using the two M8x40 screws & nyloc nuts, fit the large lifting hand to the rear of the catcher with the handle facing forward.

Using two M8x20 screws and nyloc nuts, fit the small handle to the front of the catcher with the handle facing to the rear.

7/ Fasten catcher bracket mount to the mower using one 3/8" x 1" UNC screw at the top hole and fasten with one 3/8" HD Washer and 3/8" nyloc nut. Using two M12 x 30 screws and two M12 nyloc nuts, fasten bottom of mount.

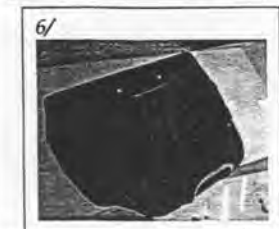
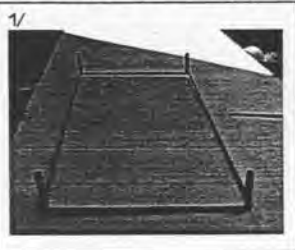
8/ Slide catcher chute into position, ensuring the clip plate has engaged the rivet on the cutter housing.

9/ Position catcher backing plate and push plate opening over the chute opening.

10/ Fit catcher mounting brackets to backing plate and mount bracket using four M8 x 25 screws, four washers, secure to mount bracket with four nyloc nuts.

### NOTE:

When fitting the catcher, the mounting brackets may need adjusting. The top of the catcher should make contact with the top lip of the mounting panel when catcher is closed.



# STOCKMAN 11.5HP & 13HP

## 4398H OPERATING & MAINTENANCE INSTRUCTIONS

### IMPORTANT

#### RECOMMENDED FUEL

Unleaded fuel is recommended by all manufacturers of engines fitted to Cox products.

#### DRIVE PRESSURE

Ensure when applying pressure to the drive pedal the wheels start rotating, failure to adhere to this will result in clutch plate and clutch cone damage.

#### SAFETY MICRO SWITCHES

Before operating machine, ensure that all micro-safety switches are operating correctly. Do not operate machine with faulty, missing or damaged safety micro-switches.

#### STARTING MACHINE

When starting machine, place right heel on micro switch located on rear of footrest. Ensure that cutter is disengaged, otherwise electric starter motor will not

engage. If engine is cold move throttle to cold start position and return to desired throttle setting when engine starts. Do not attempt to operate engine with throttle lever in cold start (choke) position. (Note electric start engines fitted with recoil can be manually started with cutter disengaged and ignition on).

#### BLADE WARNING

Do not use mowing attachment with broken or bent blades, damaged or worn bolts and nuts or damaged cutter disc, otherwise damage and premature wear will result from vibration. Replace blades, bolts and nuts only in pairs to maintain correct balance. Recommended blade-nut torque is 36-40Nm. Do not over tighten.

Keep both feet and hands clear at all times of the mowing attachment while attempting to start or operate the machine.

## WARNING

DO NOT OPERATE WITHOUT MOWING ATTACHMENT DEFLECTOR FITTED & DOWN ON SIDE DISCHARGE MODELS. FOR REAR DISCHARGE MODELS DO NOT OPERATE WITHOUT GRASS CATCHER FITTED OR GRASS DEFLECTOR FITTED.

Safety footwear is recommended when operating machine. Mount and dismount only from left hand side of machine.

Reference to left or right hand side of machine is determined by sitting in the operating position on the machine.

Ensure machine has hand brake engaged when attempting to start engine.

Never allow engine revs to exceed more than 3600 RPM.

## TO OPERATE

#### BEFORE STARTING/SWITCHING OFF:

See Engine Maintenance/Instruction Sheet. When stopping engine disengage cutter return throttle to slow position and switch off

#### DISENGAGING MOWING ATTACHMENT:

The Disengaging lever is situated on the right hand side by the steering column. Before starting, disengage mowing attachment by pulling lever fully to the operator. For safety it is advisable at all times, other than when mowing, that the mowing attachment be kept in the disengaged position.

#### TO DRIVE FORWARD/REVERSE:

Power is regulated by the throttle, set throttle control to desired engine power. Press down on the forward section of the clutch pedal for forward movement, on the rear of the clutch pedal for reverse. The amount of pressure can be used to control the ground speed, especially in heavier conditions.

N.B. Ensure that when pressure is applied to the drive pedal wheels start rotating or damage will occur to clutch plates.

#### MANOEUVRING:

Owing to the heel and toe type action of the drive pedal, it is possible to take the machine straight from forward to reverse and vice versa. This instant forward and reverse operation makes the machine very manoeuvrable and the sharpest turns can be negotiated easily and quickly.

#### TO BRAKE (WITH ENGINE RUNNING):

The clutch may be used to stop the machine. If travelling forward push the pedal into reverse until machine stops, then bring the pedal back to neutral position or vice versa if travelling in reverse. Should a failure occur during operation use the emergency stop brake pedal situated on the left hand side and forward of where your foot would normally rest during normal operation.

#### TO BRAKE (WITH ENGINE STOPPED):

Use foot brake pedal only.

Damage to clutch cone will occur if clutch pedal is used to brake the machine with the engine stationary.

#### PARKING AND TRANSPORTATION BRAKE:

Depress the lever protruding out of the left hand mudguard downward and shift the lever to the left to engage the brake. Depress and shift to the right to release.

Do not engage parking brake unless the machine has completely stopped.

Do not attempt to drive with park brake engaged damage will occur to clutch plates and/or large drive sprockets.

#### CUTTING HEIGHT ADJUSTMENT:

The height adjustment lever is located on the left hand side of the machine and may be altered to suit varying conditions, while the machine is in motion.

NOTE: When mowing slopes, keep clutch pedal in forward or reverse, depending on direction of travel. The low gearing will prevent it from picking up excessive speed. If very steep it may be necessary to throttle back slightly and/or, apply light clutch pedal pressure to the opposite clutch plate. I.e. move clutch pedal into reverse when going forward down slope or into forward when reversing down slope.

AVOID HOLDING MACHINE STATIONARY ON SLOPES USING CLUTCH WITH ENGINE RUNNING AS DAMAGE WILL OCCUR TO CLUTCH PLATES.

BLOCKED CATCHER CHUTE (30" REAR DISCHARGE):  
DISENGAGE CUTTER, STOP ENGINE REMOVE CATCHER TO CLEAR DISCHARGE CHUTE

# MAINTENANCE INSTRUCTIONS

It is the owner's responsibility to ensure that all-periodical checks, necessary adjustments and services are carried out.

**STOP ENGINE** - Never attempt any maintenance with the engine running, remove spark plug lead and ensure the blades have stopped rotating.

## 1. OIL CHANGING (ENGINE):

See Engine Maintenance/Instructions Sheet and carry out as per Engine Manufacturers Recommendation (SAE 30 Oil)

## 2. LUBRICATION OF MACHINE:

Lubrication of machine must be carried out every 25 hours of operation or once a month, whichever falls first. More frequently when operated under adverse conditions.

**A. OILING:** A few drops of oil should be placed at the following points:

Steering linkage, disengaging linkages, height adjustment mechanism, pivot bolt and linkages on clutch arm and clutch pedal.

**B. CHAIN:**

Use only chain lube for lubrication of the drive and steering chains.

**C. GREASE POINTS:**

Grease nipples are located on top of the front wheel stub axle.

Under no circumstances allow grease or oil to come into contact with the Clutch Cone or Clutch Plates. Should this problem occur, clean off immediately with petrol whilst surface areas are cool and allow to dry before operating machine.

## 3. TO CHECK BLADES:

Stop engine. Remove spark plug lead. Side Discharge Only, lift deflector and height adjustment control to highest position. If necessary simply remove the blade bolt and nut using a suitable spanner and replace worn parts.

## 4. ENGINE TO CLUTCH VEE BELT ADJUSTMENT:

Loosen the four engine mounting bolts. Move engine forward and adjust belt firmly. Do not over tension. While maintaining tension on the engine re-tighten bolts. Check belt tension at machine service period (25hrs) or more frequently under heavy mowing conditions.

## 5. CLUTCH TO CUTTER VEE BELT ADJUSTMENT:

Tension is automatically adjusted by the belt tensioning springs. However, as the belt stretches it will be necessary to lower the rear of the cutter housing by loosening the rear lifting link nut, and visa versa when a new belt is fitted.

## 6. CUTTER BRAKE ASSEMBLY ADJUSTMENT:

With disengagement handle in engaged position and mowing attachment in low cut, normal clearance between cutter head pulley and cutter head brake pad is approximately 3mm (1/8"). To adjust clearance, remove 'R' pin from brake pull rod, adjust to give required clearance, replace brake pull rod and 'R' pin. Check operation after adjustment.

## 7. CLUTCH PLATE ADJUSTMENT:

Periodically it will be found necessary to adjust the clutch plates as the clutch cone wears. Carry out this operation, with engine off and cutter in the engaged position. Engage and disengage the cutter lever a few times and leave in the engaged position, this will centre the clutch arm assembly into the neutral position. Loosen the four square head set screws on the clutch plates using tube spanner (AM006C1)

and tommy bar (AM007). Insert the clearance gauges supplied, one between the forward clutch plate and cone and the other between the reverse clutch plate and cone and hook them onto the intershaft. Slide both clutch plates against the clearance gauges and clutch cone, tighten the set screws firmly onto the flat on the intershaft. Remove gauges.

## 8. DISENGAGING ADJUSTMENT:

With the engine switched off, engage the mowing attachment, then fully lower. Place a straight edge vertically against the front of the front axle beam and in line with the disengagement lever. Measure the distance between the straight edge and the 8mm dia pin fitted with the small 'R' pin for the threaded adjuster. Disengage mowing attachment and using the same method, check the new distance. The difference should be 20 - 22mm. Engage mowing attachment, remove 'R' pin and adjust threaded adjuster accordingly. Install 'R' pin and re-check measurement. Due to normal wear in clutch to cutter vee belt, the disengagement lever will move lower and touch the foot rest. When this occurs the amount of travel will need to be re-adjusted. If a new vee belt is installed the above settings will apply.

Start engine and raise cutter to full height stop, cutter bell should not engage. If this occurs switch off engine, engage cutter then screw adjuster out 1 - 2 turns then retest.

## 9. DRIVE CHAIN:

Machines are fitted with automatic chain adjusters. No adjustment is required. Replace chain when chain has sagged enough to expose half the depth of the teeth on the bottom of the large sprocket. Failure to replace worn chain will cause premature wear of sprockets.

## 10. TO ADJUST STEERING CHAIN:

Adjust chain by loosening the four bolts which hold the steering idler shaft mounting brackets (AM255) in position, slide forward to tension chain then retighten bolts.

## 11. TO REMOVE MOWING ATTACHMENT:

Fully lower mowing attachment and engage, remove weight compensating spring, remove 'R' pin from rear lifting link and disconnect, remove 'R' pin from cutter brake adjusting rod and disconnect, disengage mowing attachment, remove belt, remove front pivot pin, Turn steering wheel to the left to slide out mowing attachment. To refit, reverse the above.

## 12. TYRE PRESSURE:

140 Kpa (20.P.S.I.) approximately front and rear. Uneven pressure can give an uneven finish when mowing and may cause damage to tyres and/or tubes.

## 13. BATTERY MAINTENANCE:

Maintain electrolyte fluid level just above plates by topping regularly with distilled water. When not in use, a battery discharges by as much as 1% a day, more when the climate is warm. To make up for this loss, a boosting charge should be given once a month. Disconnect battery terminals to charge, then allow to stand minimum 1/2hr before re-connecting (re-charge electrolyte level). If a battery is not used for a period of more than three (3) months, the terminals should be disconnected and trickle charged at two (2) amps for two (2) hours once every three (3) months or before use.

## 14. SEAT ADJUSTMENT:

Loosen four seat mounting bolts and slide seat into desired position in slots and re-tighten bolts.

## 15. GENUINE SPARE PARTS:

Always use Genuine Cox Factory Made Spare Parts. Use of non-genuine COX spares will void your warranty.



## 16. SAFETY FIRST:

The use of any mechanical appliance can cause injury if incorrect procedures are used. Please ensure that all family members of intended operators read this manual thoroughly.

## CHECK FOR LOOSE FASTENERS - TORQUE SETTINGS

1/4" UNC BOLT/NUT	10Nm (84lbf in)	6mm BOLT/NUT	9Nm (80lbf in)
5/16" UNC BOLT/NUT	20Nm (180lbf in)	20mm NUT	100Nm (74lbf ft)
3/8" UNC BOLT/NUT	36Nm (27lbf ft)	5/8" UNF NUT	100Nm (74lbf ft)
7/16" UNF BOLT	68Nm (50lbf ft)		

## MAINTENANCE SCHEDULE

### BEFORE EACH USE

- |   |   |
|---|---|
| Check engine oil level, adjust if required  | Check engine air cleaner foam pre-cleaner, service if req |
| Check engine rotating screen/finger guard, clean if required  | Check operation of safety switches, service if req        |
| Check engine air inlet console screen, clean if required  | Check foot brake operation, adjust if required.           |
| Check tyre pressures, adjust if required  | Check for loose fasteners, tighten if required            |
| Grease stub axles (make sure grease exudes stub axle bush).   |   |
| Check mowing attachment cutter blades, bolts, nuts, disc/s, housing, and guards for wear or damage, replace if required |   |

### BEFORE STORAGE

Change engine oil - Clean machine - Lubricate as required

### EVERY 5 HOURS

- |   |   |
|---|---|
| Check engine oil level, adjust if required                    | Check engine air cleaner foam pre-cleaner, service if required, |
| Check engine rotating screen/finger guard, clean if required. |   |
| Check engine air inlet console screen, clean if required*     |   |
| Lubricate machine as per maintenance instructions section 2   |   |

\*Service more often under dusty conditions, or where air born debris is present

### 1 MONTH OR 5 HOURS which ever occurs first

- |   |   |
|---|---|
| Change engine oil   | Check engine air cleaner foam pre-cleaner, service if required              |
| Check engine rotating screen/finger guard, clean if required  | Check engine air inlet console screen, clean if required                    |
| Check foot brake operation, adjust if required  | Check operation of safety switches, service if required                     |
| Check tyre pressures, adjust if required  | Grease stub axles (make sure grease exudes top & bottom stub axle bush).    |
| Check mowing attachment cutter blades, bolts, nuts, disc/s, housing, and guards for damage, replace if required | Check clutch arm action, adjust if required                                 |
| Check for loose fasteners, tighten if required  | Check and adjust engine to clutch vee belt if required.                     |
|   | Check clutch to cutter vee belt and adjust cutter housing level if required |

DATE / / HOURS.....DEALER.....

### 3 MONTHS OR 25 HOURS which ever occurs first

- |   |   |
|---|---|
| Change engine oil if operating under heavy load or high ambient temperature   | Check engine air cleaner foam pre-cleaner, service if required *            |
| Check engine rotating screen/finger guard, clean if required *  | Check engine air inlet console screen, clean if required *                  |
| Check foot brake operation, adjust if required  | Check operation of safety switches and replace if required                  |
| Check tyre pressures, adjust if required  | Grease stub axles (make sure grease exudes top & bottom stub axle bush).    |
| Check mowing attachment cutter blades, bolts, nuts, disc/s, housing, and guards for wear or damage, replace if required | Check for loose fasteners, tighten if required                              |
| Check battery condition, service if required  | Check and adjust engine to clutch vee belt if required.                     |
|   | Check clutch to cutter vee belt and adjust cutter housing level if required |

\*Service more often under dusty conditions, or where air borne debris is present

DATE / / HOURS.....DEALER/ CUSTOMER.....

### 6 MONTHS OR 50 HOURS which ever occurs first

- |   |   |
|---|---|
| Change engine oil   | If fitted clean engine exhaust spark arrester                               |
| Check engine air cleaner foam pre-cleaner, service if required *  | Check engine rotating screen/finger guard, clean if required *              |
| Check foot brake operation and lining for wear, adjust or replace if required   | Check for loose fasteners, tighten if required                              |
| Check operation of safety switches, service if required   | Check tyre pressures, adjust if required                                    |
| Grease stub axles (make sure grease exudes top & bottom stub axle bush).  | Check steering chain and sprockets or wear, adjust if required              |
| Check mowing attachment cutter blades, bolts, nuts, disc/s, housing, and guards for wear or damage, replace if required | Check clutch arm action, adjust if required                                 |
| Check drive chain and sprockets for wear, replace if required   | Check belts for wear or damage, replace if required                         |
| Check drive clutch plates and cone for wear or damage, adjust or service if required                                    | If fitted check mowing attachment brake pad for wear, replace if required   |
|   | Check battery condition, service if required                                |
|   | Check and adjust engine to clutch vee belt if required.                     |
|   | Check clutch to cutter vee belt and adjust cutter housing level if required |

\* Service more often under dusty conditions, or where air borne debris is present

DATE / / HOURS.....DEALER.....



## 9 MONTHS OR 75 HOURS which ever occurs first

Change engine oil if operating under heavy load or high ambient temperature  
Check engine rotating screen/finger guard, clean if required \*  
Check foot brake operation, adjust if required  
Check tyre pressures, adjust if required (bush).  
Check mowing attachment cutter blades, bolts, nuts, disc/s, housing, and guards for wear or damage, replace if required  
Check clutch to cutter vee belt and adjust cutter housing level if required

Check engine air cleaner foam pre-cleaner, service if required \*  
Check engine air inlet console screen, clean if required \*  
Check operation of safety switches and replace if required  
Grease stub axles (make sure grease exudes top & bottom stub axle bush).  
Check battery condition, service if required  
Check for loose fasteners, tighten if required  
Check and adjust engine to clutch vee belt if required.

\*Service more often under dusty conditions, or where air borne debris is present

DATE / / HOURS.....DEALER/ CUSTOMER.....

## 12 MONTHS OR 100 HOURS which ever occurs first

If fitted replace engine oil filter  
Check engine spark plug, clean, adjust, or replace if required  
Check engine air cleaner foam pre-cleaner, service if required \*  
Clean engine cooling system\*  
Replace in-line fuel filter  
Grease stub axles (make sure grease exudes top & bottom stub axle bush).  
Check operation of safety switches, service if required  
Check drive chain and sprockets for wear, replace if required  
Check mowing attachment cutter blades, bolts, nuts, disc/s, housing, and guards for wear or damage, replace if required  
Re-tension rear wheel adaptor retaining nuts  
Check drive clutch plates and cone for wear or damage, adjust or service if required

Change engine oil  
If fitted clean engine exhaust spark arrester  
Check engine air cleaner cartridge, service if required\*  
Check clutch arm action, adjust if required  
Check foot brake operation and lining for wear, adjust or replace if required  
Check for loose fasteners, tighten if required  
Check tyre pressures, adjust if required  
Check steering chain and sprockets or wear, adjust if required  
Check belts for wear or damage, replace if required  
Check clutch arm action, adjust if required  
Check battery condition, service if required  
Check and adjust engine to clutch vee belt if required.  
Check clutch to cutter vee belt and adjust outer housing level if required

\* Service more often under dusty conditions, or where air borne debris is present

DATE / / HOURS.....DEALER.....

## 15 MONTHS OR 125 HOURS which ever occurs first

Change engine oil if operating under heavy load or high ambient temperature  
Check engine rotating screen/finger guard, clean if required \*  
Check foot brake operation, adjust if required (bush).  
Check tyre pressures, adjust if required  
Check mowing attachment cutter blades, bolts, nuts, disc/s, housing, and guards for wear or damage, replace if required  
Check for loose fasteners, tighten if required

Check engine air cleaner foam pre-cleaner, service if required \*  
Check operation of safety switches and replace if required  
Grease stub axles (make sure grease exudes top & bottom stub axle bush).  
Check battery condition, service if required  
Check for wear or damage, replace if required  
Check clutch to cutter vee belt and adjust cutter housing level if required  
Check and adjust engine to clutch vee belt if required.

\*Service more often under dusty conditions, or where air borne debris is present

DATE / / HOURS.....DEALER/ CUSTOMER.....

## 18 MONTHS OR 150 HOURS which ever occurs first

Change engine oil  
If fitted clean engine exhaust spark arrester  
Check engine air cleaner foam pre-cleaner, service if required \*  
Check engine rotating screen/finger guard, clean if required \*  
Check engine air inlet console screen, clean if required \*  
Check foot brake operation and lining for wear, adjust or replace if required  
Check operation of safety switches, service if required  
Check tyre pressures, adjust if required  
Grease stub axles (make sure grease exudes top & bottom stub axle bush).  
Check steering chain and sprockets or wear, adjust if required  
Check mowing attachment cutter blades, bolts, nuts, disc/s, housing, and guards for wear or damage, replace if required

Check belts for wear or damage, replace if required  
Check drive chain and sprockets for wear, replace if required  
If fitted dismantle, clean, re-grease, and reassemble differential  
If fitted check mowing attachment brake pad for wear, replace if required  
Check drive clutch plates and cone for wear or damage, adjust or service if required  
Check clutch arm action, adjust if required  
Check battery condition, service if required  
Check for loose fasteners, tighten if required  
Check and adjust engine to clutch vee belt if required.  
Check clutch to cutter vee belt and adjust outer housing level if required

\* Service more often under dusty conditions, or where air borne debris is present

DATE / / HOURS.....DEALER.....

### 21 MONTHS OR 175 HOURS which ever occurs first

Change engine oil if operating under heavy load or high ambient temperature

- Check engine air cleaner foam pre-cleaner, service if required \*
- Check engine rotating screen/finger guard, clean if required \*
- Check foot brake operation, adjust if required
- Check operation of safety switches and replace if required
- Check tire pressures, adjust if required

\*Service more often under dusty conditions, or where air borne debris is present

- Grease stub axles (make sure grease exudes top & bottom stub axle bush)
- Check mowing attachment cutter blades, bolts, nuts, disc/s, housing, and guards for wear or damage, replace if required
- Check battery condition, service if required
- Check for loose fasteners, tighten if required
- Check clutch to cutter vee belt and adjust cutter housing level if required
- Check and adjust engine to clutch vee belt if required.

DATE / / HOURS.....DEALER/ CUSTOMER.....

### 24 MONTHS OR 200 HOURS which ever occurs first

If fitted replace engine oil filter

- Change engine oil
- Check engine spark plug, clean, adjust, or replace if required
- If fitted clean engine exhaust spark arrestor
- Check engine air cleaner foam pre-cleaner, service if required \*
- Check engine air cleaner cartridge, service if required
- Clean engine cooling system\*
- Check foot brake operation and lining for wear, adjust or replace if required
- Check operation of safety switches, service if required
- Check tire pressures, adjust if required
- Grease stub axles (make sure grease exudes top & bottom stub axle bush)
- Check steering chain and sprockets or wear, adjust if required

\* Service more often under dusty conditions, or where air borne debris is present

- Check mowing attachment cutter blades, bolts, nuts, disc/s, housing, and guards for wear or damage, replace if required
- Check belts for wear or damage, replace if required
- Check drive chain and sprockets for wear, replace if required
- Check drive clutch plates and cone for wear or damage, adjust or service if required
- Check clutch arm action, adjust if required
- Check battery condition, service if required
- Check for loose fasteners, tighten if required
- Check and adjust engine to clutch vee belt if required.
- Check clutch to cutter vee belt and adjust cutter housing level if required

DATE / / HOURS.....DEALER.....

### 27 MONTHS OR 225 HOURS which ever occurs first

Change engine oil if operating under heavy load or high ambient temperature

- Check engine air cleaner foam pre-cleaner, service if required \*
- Check engine rotating screen/finger guard, clean if required \*
- Check foot brake operation, adjust if required
- Check operation of safety switches and replace if required
- Check tire pressures, adjust if required

\*Service more often under dusty conditions, or where air borne debris is present

- Grease stub axles (make sure grease exudes top & bottom stub axle bush)
- Check mowing attachment cutter blades, bolts, nuts, disc/s, housing, and guards for wear or damage, replace if required
- Check battery condition, service if required
- Check for loose fasteners, tighten if required
- Check clutch to cutter vee belt and adjust cutter housing level if required
- Check and adjust engine to clutch vee belt if required.

DATE / / HOURS.....DEALER/ CUSTOMER.....

### 30 MONTHS OR 250 HOURS which ever occurs first

Change engine oil

- If fitted clean engine exhaust spark arrestor
- Check engine air cleaner foam pre-cleaner, service if required \*
- Check engine rotating screen/finger guard, clean if required \*
- Check foot brake operation and lining for wear, adjust or replace if required
- Check operation of safety switches, service if required
- Check tire pressures, adjust if required
- Grease stub axles (make sure grease exudes top & bottom stub axle bush)
- Check steering chain and sprockets or wear, adjust if required
- Check mowing attachment cutter blades, bolts, nuts, disc/s, housing, and guards for wear or damage, replace if required

\* Service more often under dusty conditions, or where air borne debris is present

- Check belts for wear or damage, replace if required
- Check drive chain and sprockets for wear, replace if required
- Check drive clutch plates and cone for wear or damage, adjust or service if required
- Check clutch arm action, adjust if required
- Check battery condition, service if required
- Check for loose fasteners, tighten if required
- Check and adjust engine to clutch vee belt if required.
- Check clutch to cutter vee belt and adjust cutter housing level if required

DATE / / HOURS.....DEALER.....

### 33 MONTHS OR 275 HOURS which ever occurs first

Change engine oil if operating under heavy load or high ambient temperature

Check engine air cleaner foam pre-cleaner, service if required \*

Check engine rotating screenvlinger guard, clean if required \*

Check foot brake operation, adjust if required

Check operation of safety switches and replace if required

Check tire pressures, adjust if required

\*Service more often under dusty conditions, or where air borne debris is present

Grease stub axles (make sure grease exudes top & bottom stub axle bush)

Check mowing attachment cutter blades, bolts, nuts, discs, housing, and guards for wear or damage, replace if required

Check battery condition, service if required

Check for loose fasteners, tighten if required

Check clutch to cutter vee belt and adjust cutter housing level if required

Check and adjust engine to clutch vee belt if required.

DATE / / HOURS.....DEALER/ CUSTOMER.....

### 36 MONTHS OR 300 HOURS which ever occurs first

If fitted replace engine oil filter

Change engine oil

Check engine spark plug, clean, adjust, or replace if required

If fitted clean engine exhaust spark arrestor

Check engine air cleaner foam pre-cleaner, service if required \*

Check engine air cleaner cartridge, service if required

Clean engine cooling system\*

Check foot brake operation and lining for wear, adjust or replace if required

Check operation of safety switches, service if required

Check tire pressures, adjust if required

Grease stub axles (make sure grease exudes top & bottom stub axle bush)

Check steering chain and sprockets or wear, adjust if required

\* Service more often under dusty conditions, or where air borne debris is present

Check mowing attachment cutter blades, bolts, nuts, discs, housing, and guards for wear or damage, replace if required

Check belts for wear or damage, replace if required

Check drive chain and sprockets for wear, replace if required

Check drive clutch plates and cone for wear or damage, adjust or service if required

Check clutch arm action, adjust if required

Check battery condition, service if required

Check for loose fasteners, tighten if required

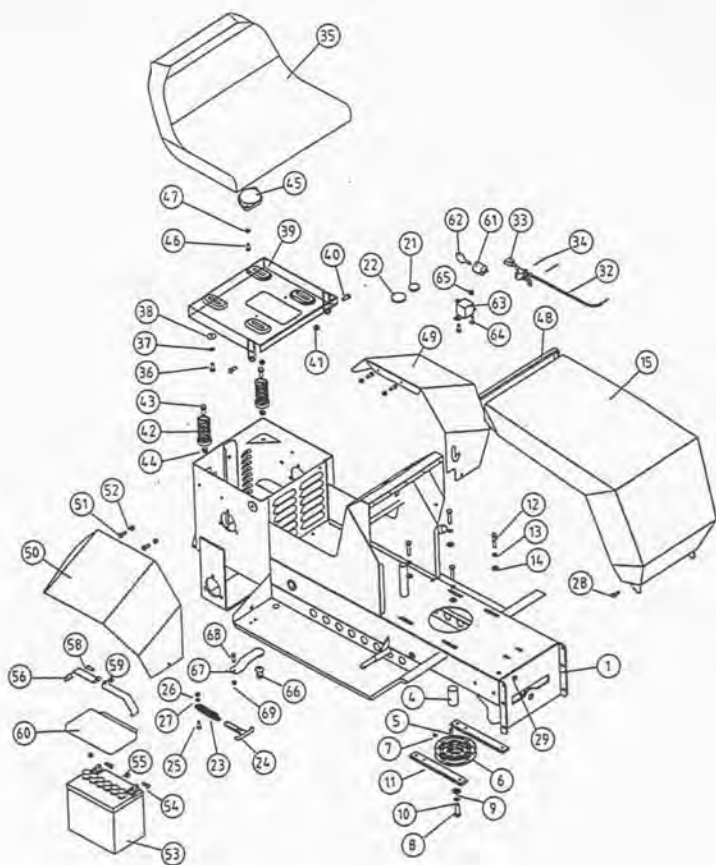
Check and adjust engine to clutch vee belt if required.

Check clutch to cutter vee belt and adjust cutter housing level if required

DATE / / HOURS.....DEALER.....

We are proud that you have purchased a Cox product and urge you to follow these instructions to obtain the maximum life for your machine. If in doubt check with your supplier.

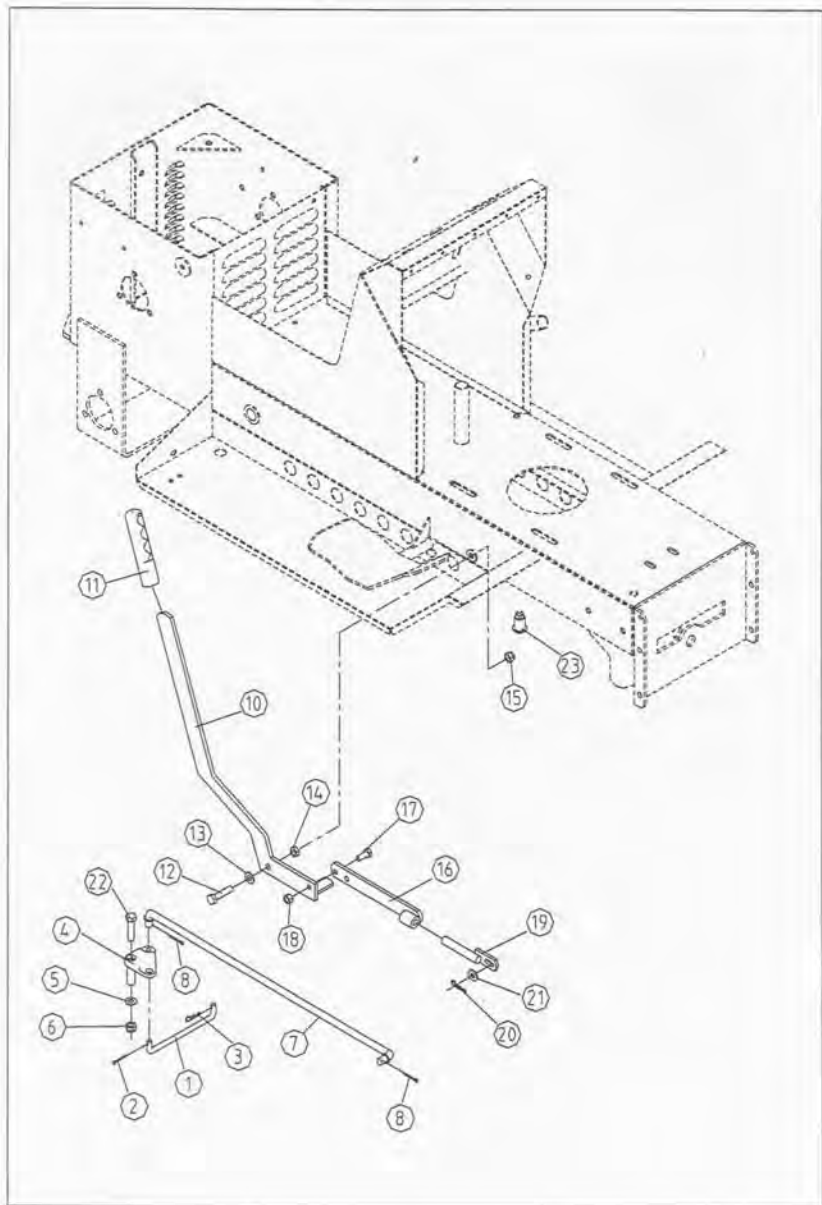
# PARTS LIST: CHASSIS & COMPONENTS



## PARTS LIST: CHASSIS &amp; COMPONENTS

Ref. No.	Part No.	Description
1	43110198H	Chassis (Duel chain adjuster)
2	DEC4398H11.5	Stockman 11.5HP Decal Set
	DEC4398H13.0	Stockman 13HP Decal Set
3	NSM25	Non-Skid Material Set
4	AM233	Engine Pulley Spacer
5	AM175	Engine Pulley Key
6	AM234	Engine Pulley
7	GS0505W	Engine Pulley Key Screw
8	SH0720F	Engine Pulley Retaining Bolt
9	W072004	Engine Pulley Ret. Bolt Washer
10	W07S	Ret. Bolt Shakeproof Washer
11	AM078B0	Engine Mounting Bolt Plate (2)
12	B0524C	Engine Mounting Bolt (4)
13	WS05	Engine Mtg. Bolt Spring Washer (4)
14	W051216	Engine Mounting Bolt Washer (4)
15	431102	Bonnet
21	091130	Dash Plug Small
22	091131	Dash Plug Large
23	AM180	Bonnet Spring (2)
24	AM181	Bonnet Strap (2)
25	SH0616M	Bonnet Spring Bolt (2)
26	NM6NT	Bonnet Spring Nut (2)
27	WD40816	Bonnet Spring Washer (2)
28	SH0616M	Bonnet Hinge Bolt (2)
29	NM6NT	Bonnet Hinge Bolt Nut (2)
32	KIT51S2	Throttle Cable c/w Lever
33	AM088	Throttle Lever
34	PR0306	Throttle Lever Rivet (2)
35	AM16499G	Seat
36	SH0512C	Seat Retaining Bolt (4)
37	W05S	Seat Ret. Bolt S/P Washer (4)
38	W052003	Seat Ret. Bolt Washer (4)
39	AM226B99F	Seat Mount
40	SH0516C	Seat Mount Hinge Bolt (2)
41	N05CN	Hinge Bolt Nut (2)
42	AM177	Seat Spring (2)
43	SH0612C	Seat Spring Ret. Bolt (2)
44	N06CN	Ret. Bolt Nut (2)
45	SSL	Seat Micro Switch
46	SR0408W	Seat Micro Attach Bolt (2)
47	W04S	Seat Micro Attach Washer (2)
48	AM179	Bonnet Trim
49	AM302B	Mudguard LH
50	AM303B	Mudguard RH
51	SH0616M	Mudguard Ret. Bolt (4)
52	NM6NT	Mudguard Ret. Bolt Nut (4)
53	AM109	Battery
54	SH0616M	Terminal Bolt (2)
55	NM6NT	Terminal Bolt Nut (2)
56	AM300	Battery Clamp (2)
58	SR0420C	Battery Clamp Screw
59	N04C	Clamp Screw Nut
60	AM098M8	Battery Cover
61	AM014	Ignition Switch
62	AM015	Ignition Switch Key (2)
63	AM159	Solenoid
64	SH0616M	Solenoid Mounting Bolt (2)
65	NM6NT	Solenoid Mounting Bolt Nut (2)
66	SKIT132	Micro Switch
67	I3096	Foot Micro Spring Plate
68	SH0616M	Spring Plate Bolt
69	NM6NT	Spring Plate Bolt Nut
70	AM005G0	Spark Plug Spanner
71	AM005C1	Tube Spanner
72	AM007	Tommy Bar
73	I3123	Clutch Clearance Gauge (2)

PARTS LIST: RIGHT HAND SIDE OF CHASSIS

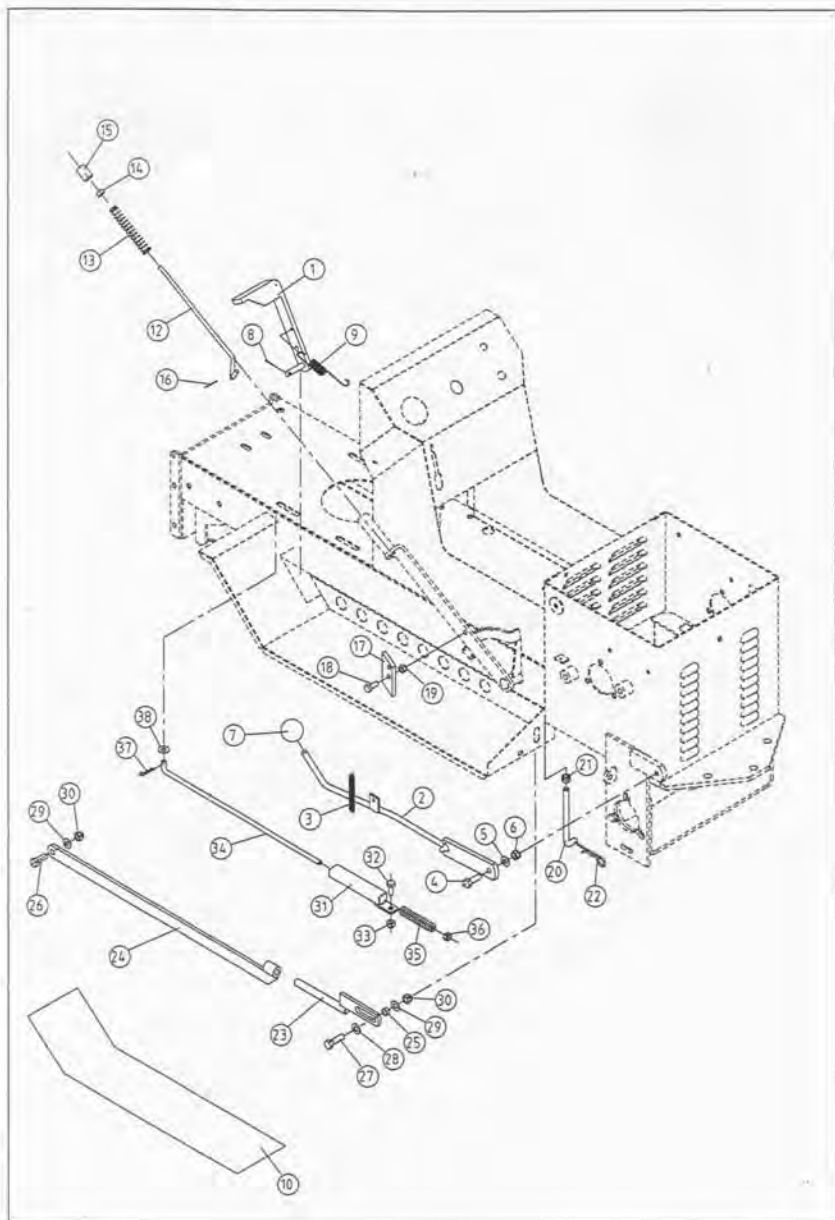


## PARTS LIST: RIGHT HAND SIDE OF CHASSIS

Ref. No.	Part No.	Description
1	AM238	Clutch Rod Short
2	CP3-220	Clutch Rod Short Split Pin
3	RP01	Clutch Rod Short 'R' Pin
4	AM182E94	Clutch Rod Short Pivot Plate
5	W061216	Clutch Rod Pivot Plate Washer
6	N06CN	Clutch Rod Pivot Plate Nut
7	251201	Clutch Rod Long
8	CP3-220	Clutch Rod Long Split Pin (2)
10	AM239H0	Disengaging Handle
11	AM009	Handle Grip
12	B0625M	Disengaging Handle Pivot Bolt
13	W061216	Pivot Bolt Washer (2)
14	N06C	Disengaging Handle Pivot Bolt Nut
15	N06CN	Pivot Bolt Locknut
16	AM240	Disengaging Adjuster Bushed
17	SH0512C	Disengaging Adjuster Bolt
18	N05C	Disengaging Adjuster Bolt Nut
19	AM241	Disengaging Adjuster Threaded
20	RP01	Disengaging Adjuster 'R' Pin
21	W051216	Disengaging Adjuster Washer (2)
22	B0636C	Clutch Pivot Plate Bolt
23	SKIT133	Disengaging Micro Switch
24	NSM01	Non Skid - Clutch Pedal



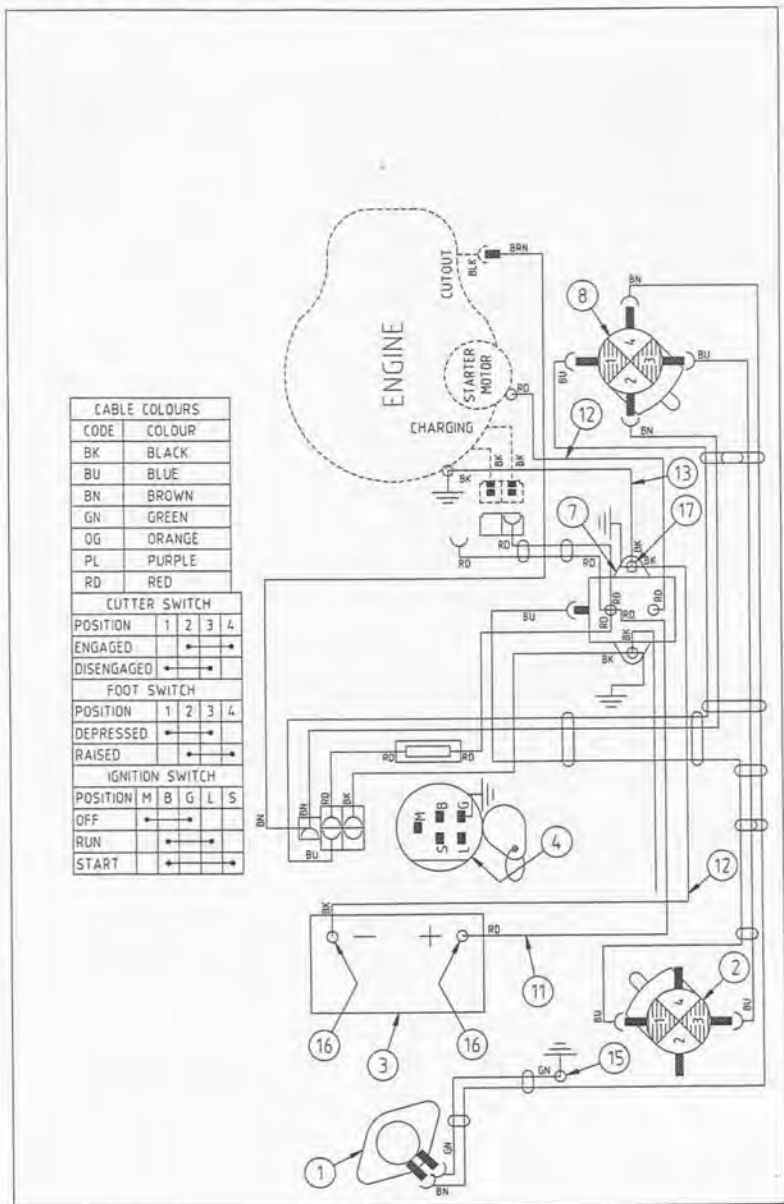
# PARTS LIST: LEFT HAND SIDE OF CHASSIS



## PARTS LIST: LEFT HAND SIDE OF CHASSIS

Ref. No.	Part No.	Description
1	AM285 NSM02	Brake Pedal Non Skid - Park Brake
2	AM284K94	Hand Park Brake
3	AM288	Hand Brake Spring
4	SH0616C	Hand Park Brake Bolt
5	W061216	Hand Park Brake Washer
6	N06CN	Hand Park Brake Nut
7	AM290	Hand Brake Knob
8	CP3-220	Brake Pedal Split Pin
9	AM183	Brake Pedal Spring
10	13094	Non Skid Material - Running Board (2)
12	AM143M9	Height Adjustment Pawl Push Rod
13	AM012	Height Adjustment Pawl Push Rod Spring
14	N04C	Height Adjustment Pawl Push Rod Lock Nut
15	AM013Q2	Height Adjustment Pawl Push Rod Button
16	CP2-512	Height Adjustment Pawl Push Rod Split Pin
17	AM011	Height Adjustment Pawl
18	SH0516C	Height Adjustment Pawl Pivot Bolt
19	N05CN	Height Adjustment Pawl Pivot Bolt Nut
20	AM185B0	Cutter Housing Lifting Link
21	N06CN	Cutter Lifting Link Nut
22	RP02	Cutter Lifting Link 'R' Pin
23	AM267	Front to Rear Connecting Rod Threaded
24	AM268	Front to Rear Connecting Rod Bushed
25	AM249	Connecting Rod Bush
26	SH0616C	Front to Rear Connecting Rod Bolt Front
27	B0620C	Front to Rear Connecting Rod Bolt Rear
28	W0620HD	Connecting Rod Rear Bolt Washer
29	W061216	Connecting Rod Bolt Washer (2)
30	N06CN	Connecting Rod Bolt Nut (2)
31	AM034H0B	Cutter Brake Adjusting Bracket
32	SH0512C	Cutter Brake Adjusting Bracket Bolt
33	N05CN	Cutter Brake Adjusting Bracket Bolt Nut
34	091310	28" Cutter Brake Adjusting Rod
	251301	32" Cutter Brake Adjusting Rod
35	AM035	Cutter Brake Spring
36	NS05C	Cutter Brake Adjusting Rod Nut
37	RP01	Cutter Brake Adjusting Rod 'R' Pin
38	W051216	Cutter Brake Adjusting Rod Washer

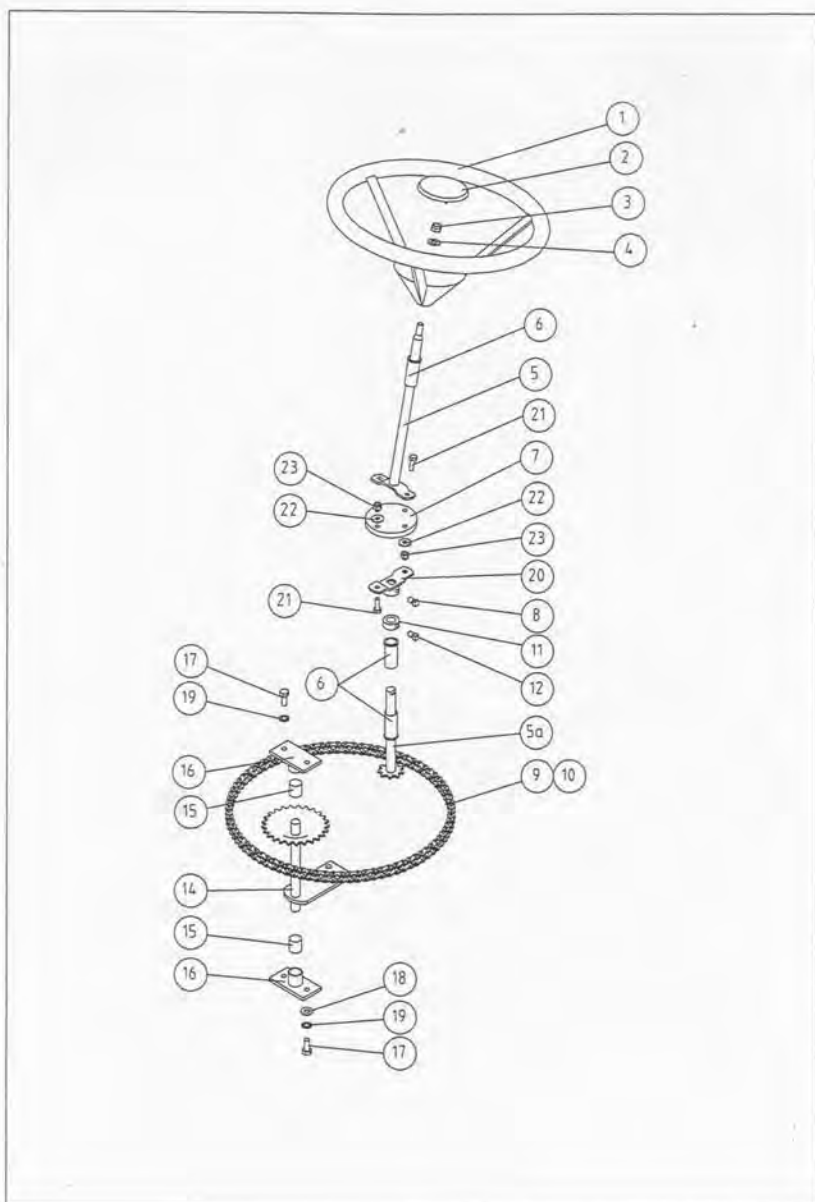
# PARTS LIST: ELECTRICAL



## PARTS LIST: ELECTRICAL

Ref. No.	Part No.	Description
1	SSL	Seat Micro
2	SKIT132	Foot Micro
	13096	Depressor Foot Switch
3	AM109	Battery
4	AM014	Ignition Switch
	AM015	Ignition Key (2)
7	AM159	Solenoid
8	SKIT133	Disengaging Micro
10	431401	Wiring Loom
11	AM064R2	Battery to Solenoid (Red)
12	AM065	Battery to Earth (Black)
	SAM104	Fuse
	SAM160	Fuse Holder
	AM096	Loom Clamp (2)
	PR0306	Loom Clamp Pop Rivet(2)
	W030620	Pop Rivet Washer (2)
	SH0616M	Earth Lead Bolt (2)
	NM6NT	Earth Lead Bolt Nut (2)
13	AM065	Chassis to Engine (Black)
14	AM064R2	Solenoid to Starter Motor (Red)
15	SH0616M	Seat Solenoid Earth Bolt
	NM6NT	Seat Solenoid Earth Bolt Nut
16	SH0616M	Battery Terminal Bolt (2)
	NM6NT	Battery Terminal Bolt Nut (2)
17	SH0616M	Solenoid Mounting Bolt (2)
	NM6NT	Solenoid Mounting Bolt Nut (2)

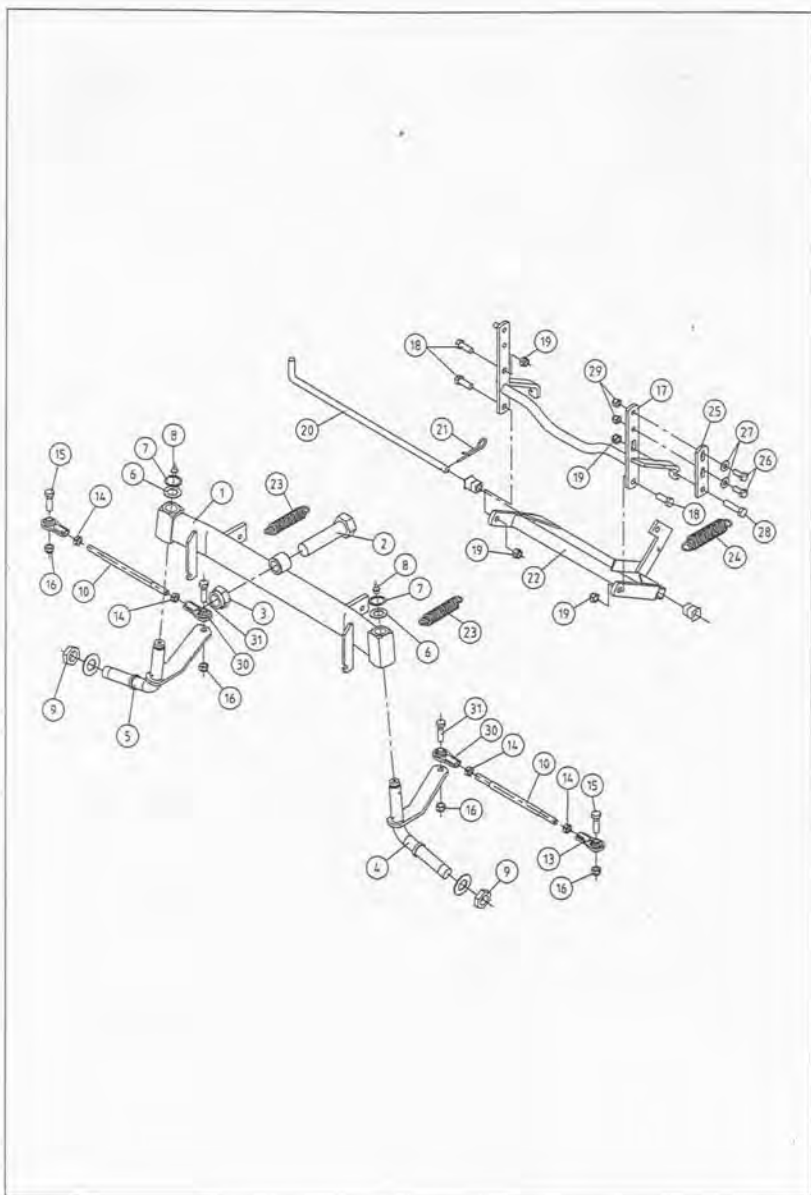
# PARTS LIST: STEERING COMPONENTS



## PARTS LIST: STEERING COMPONENTS

Ref. No.	Part No.	Description
1*	SKIT37	Steering Wheel Incl. Emblem
*	AM167M8	Steering Wheel
2*	AM225	Steering Wheel Emblem
3	N06CN	Steering Wheel Nut
4	W061216	Steering Wheel Washer
5	AM250	Steering Shaft Upper
5a	AM251	Steering Shaft Lower
6	AM017C1	Steering Shaft Bush (3)
7	AM25399J	Steering Shaft Universal
8	GS0404W	Steering Shaft Flange Set Screw
9	AM018	Chain Incl. Link
10	SAM019	Connecting Link
11	AM066	Steering Shaft Lock Collar
12	GS0404W	Lock Collar Set Screw
14	AM331	Steering Idler Shaft
15	AM215	Steering Idler Shaft Mtg Bracket Bush (2)
16	AM255	Steering Idler Shaft Mtg Bracket (2)
17	SH0512C	Steering Idler Shaft Mtg Bracket Bolt (4)
18	W051216	Steering Idler Shaft Mtg Bracket Washer (2)
19	W05S	Idler Shaft Mtg Bracket S/P Washer (4)
20	AM252	Steering Shaft Flange
21	B0625M	Flange Mounting Bolt (4)
22	W041216	Flange Mounting Bolt Washer (4)
23	NM6NT	Flange Mounting Bolt Nut (4)
	*SKIT37	Steering Wheel Include. Emblem

# PARTS LIST: FRONT AXLE COMPONENTS

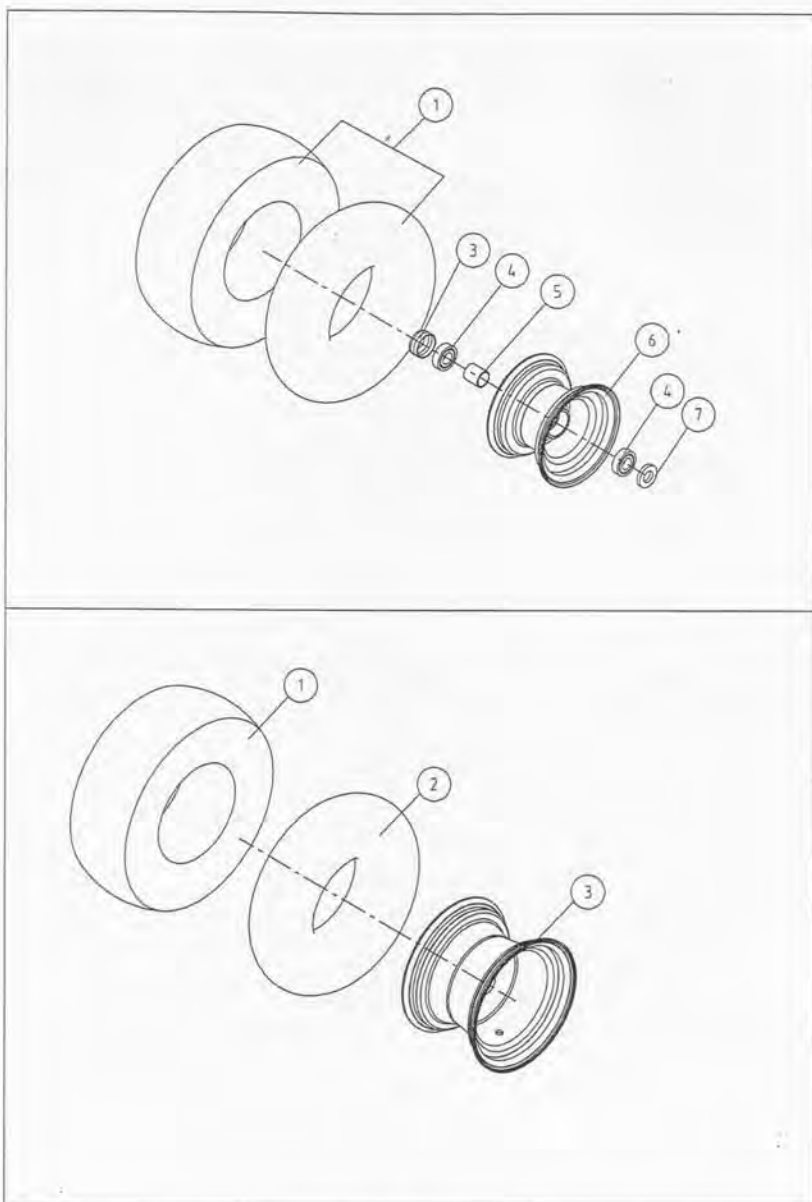




## PARTS LIST: FRONT AXLE COMPONENTS

Ref. No.	Part No.	Description
1	AM332	Front Axle Beam
2	B1240W	Front Axle Pivot Bolt
3	N12CN	Front Axle Pivot Bolt Nut
4*	AM333	Stub Axle LH
5	AM334	Stub Axle RH
6**	AM336	Stub Axle Dust Cap (2)
7**	C02	Stub Axle Circlip (2)
8**	GNTF3	Grease Nipple (2)
9	NHM20X1.5T	Front Wheel Nut (2)
	W203806	Front Wheel Spacer (2)
10	AM256	Tie Rod (2)
13	AM020	Tie Rod End (2)
14	N06F	Tie Rod End Lock Nut (4)
15	B0620C	Tie Rod End Bolt (4)
16	N06CN	Tie Rod End Bolt Nut (4)
17	AM341	Front Axle Connecting Link
18	SH0616C	Connecting Link Bolt (3)
19	N06CN	Connecting Link Bolt Nut (4)
20	13016	Cutter Housing Pivot Pin
21	SH0616M	Cutter Housing Pivot Pin Screw
	NM6NT	Cutter Housing Pivot Pin Nut
22	AM342	Cutter Housing Conn. Link
	AM230	Cutter Housing Conn. Link Bushes (2)
23	AM040	Cutter Belt Tension Spring (2)
24	AM145	Weight Compensating Spring
25	AM304	Front Axle Conn Link Adjuster
26	SH0516C	Front Axle Conn Link Adjuster Bolt (2)
27	W051216	Front Axle Conn Link Adjuster Washer (2)
28	B0624C	Front Axle Conn Link Adj Pivot Bolt
29	N05CN	Front Axle Conn Link Adj. Nut (2)
30	AM337	Inner Tie Rod End (2)
31	B0624C	Inner Tie Rod Bolt (2)
*	SKIT89	Stub Axle Left Hand
-	SKIT90	Stub Axle Right Hand

## PARTS LIST: WHEEL COMPONENTS



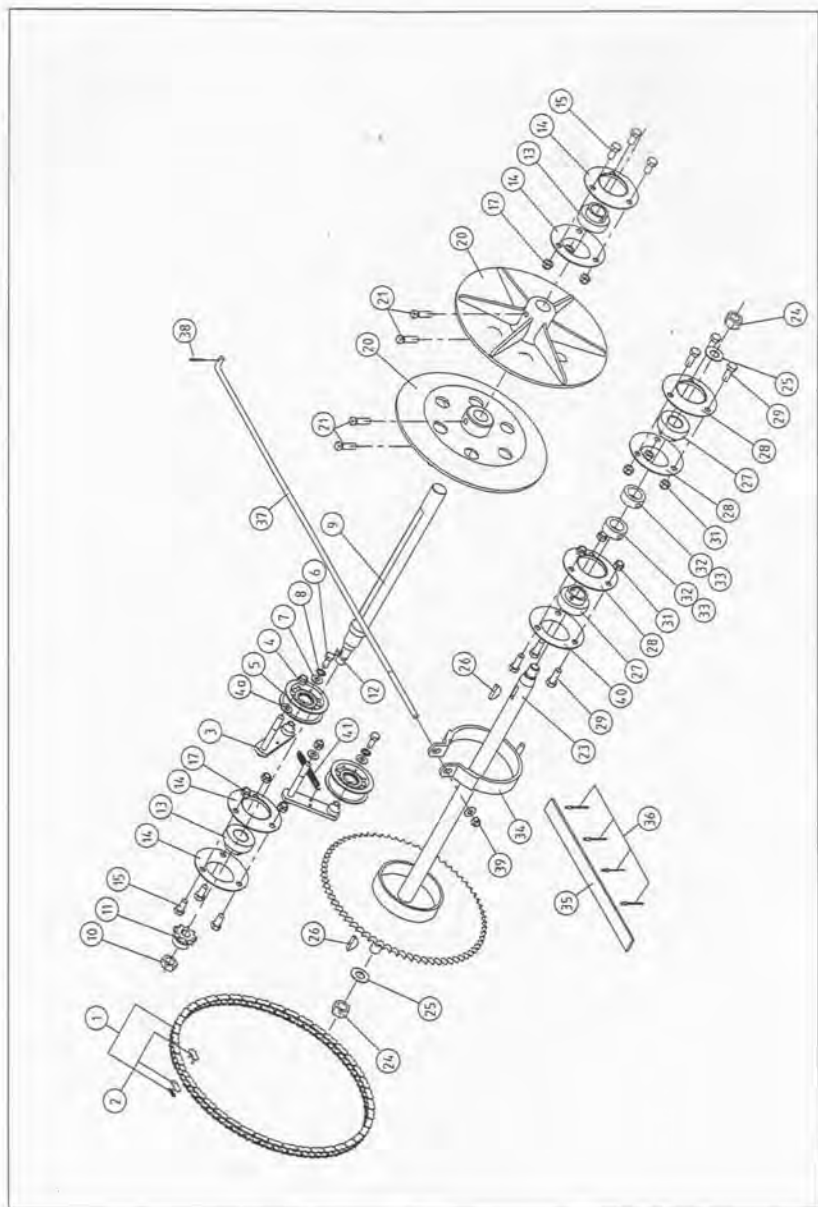
**PARTS LIST: FRONT WHEEL COMPONENTS**

<b>Ref. No.</b>	<b>Part No.</b>	<b>Description</b>
1	TT500x6	Front Wheel Tyre & Tube (2)
	STU500X6	Front Wheel Tube (2)
3	AM07099C	Front Wheel Hub Cap (2)
4	BB204212N	Bearing (4)
5	AM021	Bearing Spacer (2)
6	AM193M9	Wheel Hub (2)
7	W203902	Inner Dust Washer (2)

**PARTS LIST: REAR WHEEL COMPONENTS**

<b>Ref. No.</b>	<b>Part No.</b>	<b>Description</b>
1	TT650x8	Rear Wheel Tyre & Tube (2)
	STU650X8	Rear Wheel Tube (2)
3	AM194	Wheel Hub (2)

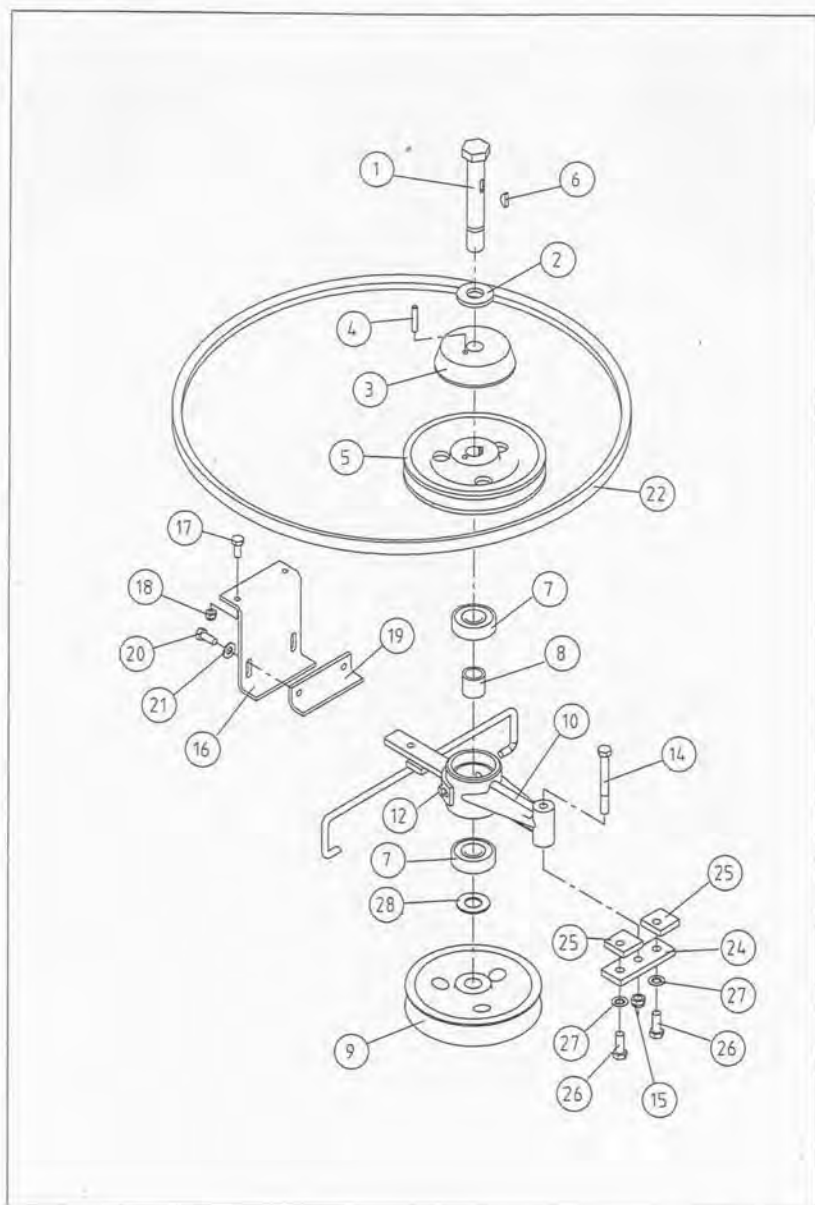
# PARTS LIST: DRIVE COMPONENTS



## PARTS LIST: DRIVE COMPONENTS

Ref. No.	Part No.	Description
1	231901	Drive Chain Incl Link
2	S231904	Connecting Link
3	AM362	Chain Tensioner (2)
4	N06CN	Tensioner Nut (2)
4a	W061216	Tensioner Washer (2)
5	PIFBB126598A	Bearing Idler (2)
6	SH0512C	Ret. Bolt (2)
7	W051216	Ret. Nut Washer (2)
8	W05S	Ret. Nut S/P Washer (2)
9	AM363	Intershaft
	AM364	Sleeve, Spacer, Shaft
10	N10FT	Intershaft Nut
11	SKJT65	Intershaft Sprocket & Key
12	SK03	Intershaft Sprocket Key
13	BB25SAN	Intershaft Bearing (2)
14	AM024	Intershaft Bearing Flange (4)
15	SH0612C	Bearing Flange Bolt (6)
17	N06CN	Bearing Flange Bolt Nut (6)
20	AM197	Clutch Plate (2)
21	SS0612W	Clutch Plate Set Screw (4)
23	231903	Rear Axle
24	N10F	Rear Axle Nut (2)
25	W102016	Rear Axle Washer (2)
26	K18	Rear Axle Key (2)
27	BB25SAN	Rear Axle Bearing (2)
28	AM024	Rear Axle Bearing Flange (3)
29	SH0616C	Bearing Flange Bolt (3)
30	W061216	Bearing Flange Bolt Washer (3)
31	N06CN	Bearing Flange Bolt Nut (6)
32	AM025	Rear Axle Lock Collar (2)
33	GS0505W	Lock Collar Set Screw (2)
34	KIT16	Drum Brake Incl Lining
35	AM200	Brake Band Lining
36	PR0205	Brake Lining Rivet (4)
37	AM266	Drum Brake Rod
38	CP3-220	Drum Brake Rod Split Pin
39	N05CN	Drum Brake Rod Nut
	W051216	Brake Drum Washer
40	AM202	Rear Axle Bearing Flange LH
41	AM288	Chain Tensioner Spring

# PARTS LIST: CLUTCH ARM & COMPONENTS

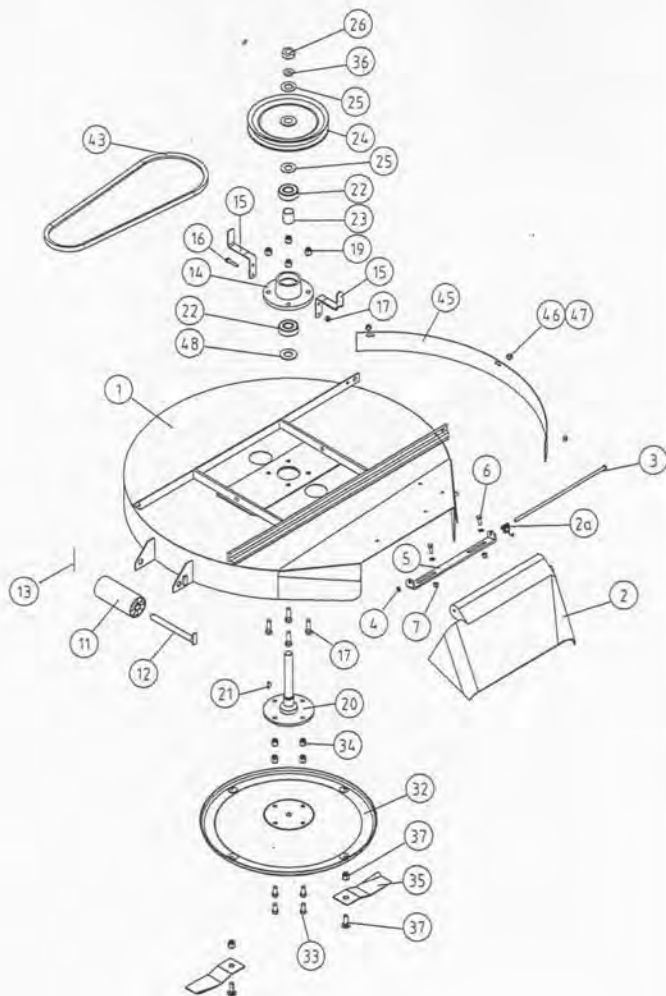


PARTS LIST: CLUTCH ARM & COMPONENTS

Ref. No.	Part No.	Description
1	AM204J3	Clutch Shaft Including Washer
2	W204305	Clutch Cone Ret. Washer
3	CC2095G	Clutch Cone
	SCC2095H	Clutch Cone, Heavy Duty (spare part only)
4	AM026	Clutch Cone Pin
5	AM326	Clutch Pulley Upper
6	SK09	Clutch Pulley Key
7	BB205215N	Clutch Bearing (2)
8	AM072	Clutch Bearing Spacer
9	252001	Clutch Pulley Lower
10	AM207	Clutch Arm c/w Yoke
12	SH0512C	Clutch Arm Yoke Ret. Bolt (2)
14	B0648C	Clutch Arm Pivot Bolt
15	N06CN	Clutch Arm Pivot Bolt Nut
16	AM206	Clutch Arm Locating Bracket
17	SH0616M	Clutch Arm Locating Bracket Bolt (2)
18	NM6NT	Clutch Arm Locating Bracket Bolt Nut (2)
19	AM246	Clutch Arm Bracket Wear Plate
20	SH0512C	Clutch Arm Bracket Wear Plate Bolt (2)
21	W051216	Clutch Arm Brkt Wear Plate Washer (2)
	W05S	Wear Plate S/P Washer (2)
22	V16	Belt - Engine to Clutch
24	AM208	Clutch Adjusting Plate
25	AM209	Clutch Plate Tapped (2)
26	SH0510C	Adjusting Plate Bolt (2)
27	W051016	Adjusting Plate Bolt Washer (2)
	WS050216	Bolt Spring Washer
28	W203902	Clutch Pulley Bearing Washer



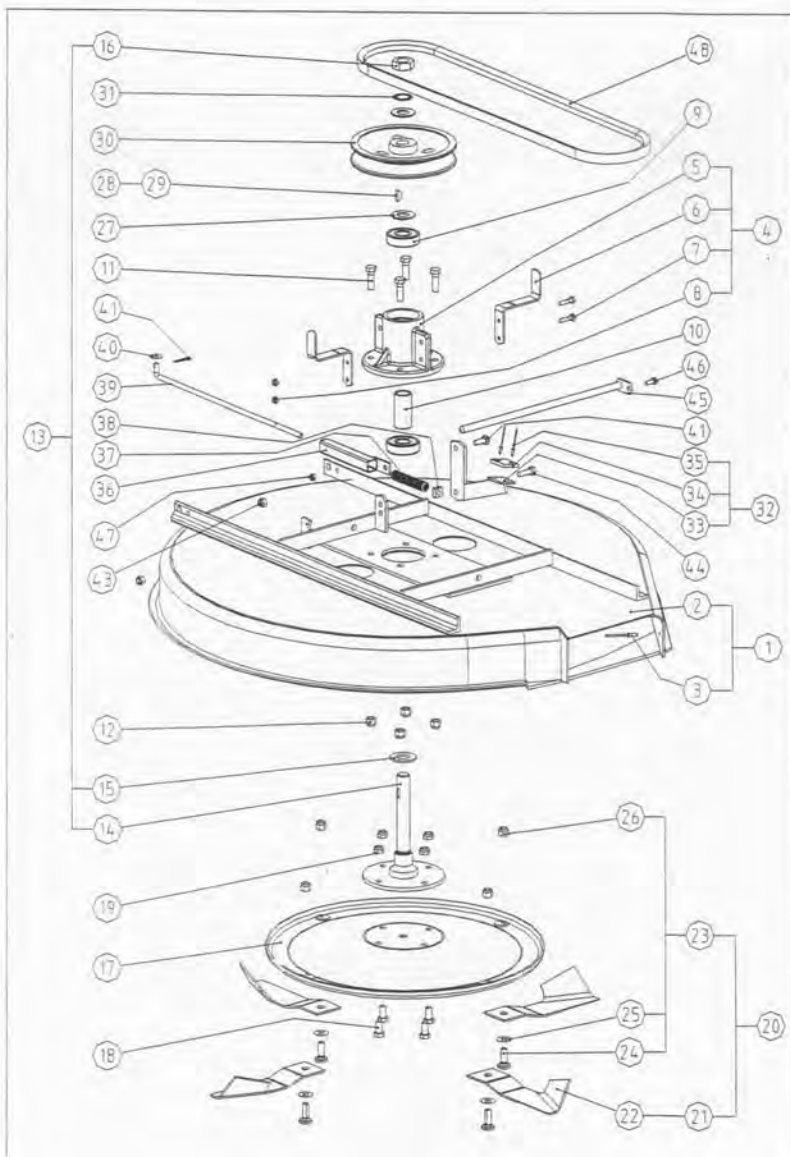
PARTS LIST: 28"/32" MOWING ATTACHMENT COMPONENTS



PARTS LIST: 28"/32" MOWING ATTACHMENT COMPONENTS

Ref. No.	Part No.	Description
1	SKIT123	28" Cutter Housing c/w F/Cover
	SKIT122	32" Cutter Housing c/w F/Cover
2*	AM259	Deflector
*	AM272	Deflector Spring
3*	AM273	Deflector Rod
4*	AM274	Deflector Ratchet Plate
5*	AM052E1	Deflector Bracket
6*	SH0616M	Deflector Bracket Bolt (2)
7*	NM6NT	Deflector Bracket Bolt Nut (2)
*	W041216	Deflector Bracket Washer (2)
11	AM036D9	Cutter Housing Roller
12	AM037	Cutter Roller Shaft
13	CP3-225	Cutter Roller Shaft Split Pin
14	SKIT08	Cutter Bearing Hsng c/w Belt Guides
15	AM073	Belt Guides (2)
16	B0625M	Belt Guide Bolt (2)
17	NM6NT	Belt Guide Bolt Nut (2)
18	B0620C	Cutter Bearing Housing Bolt (4)
19	NF06CN	Cutter Bearing Housing Bolt Nut (4)
20	I3181	Cutter Shaft including Nut
21	SK09	Cutter Shaft Key
22	BB205215N	Cutter Shaft Bearing (2)
23	AM029	Bearing Spacer
24	AM030	Cutter Shaft Pulley
25	W203902	Pulley Ret. Washer (2)
26	NHM20x1.5T	Pulley Ret. Nut
27	KIT15	Cutter Brake Incl. Pad
28	AM033I95	Cutter Brake Pad
29	PR0205	Brake Pad Pop Rivet (2)
30	SH0512C	Cutter Brake Pivot Bolt
31	N05CN	Cutter Brake Pivot Bolt Nut
32	AM076H7	Cutter Disc
33	SH0612C	Cutter Disc Ret. Bolt (4)
34	N06CN	Cutter Disc Ret. Bolt Nut (4)
35	SMB150SHD	28" Cutter Blade - Stepped
	SMB150AHD	28" Cutter Blade - Air Flow (optional)
	SMB198SHD	32" Cutter Blade - Stepped
	SMB198AHD	32" Cutter Blade - Air Flow (optional)
36	WM20S	Pulley Ret S/P Washer
37	SKIT01D1	Blade Bolt & Nut Set
43	V13	Belt - Cutter to Clutch 28"
	V10	Belt - Cutter to Clutch 32"
45	AM220	Cutter Front Guard
46	W051216	Cutter Guard Washer (3)
47	N05CN	Cutter Guard Ret. Nut (3)
48	I3128	Washer
*	SKIT66	Deflector Kit
	SKIT32	28" Blade, Bolt, Nut Set - Stepped
	SKIT33	28" Blade, Bolt, Nut Set - Air Flow
	SKIT54	32" Blade, Bolt, Nut Set - Stepped
	SKIT55	32" Blade, Bolt, Nut Set - Air Flow

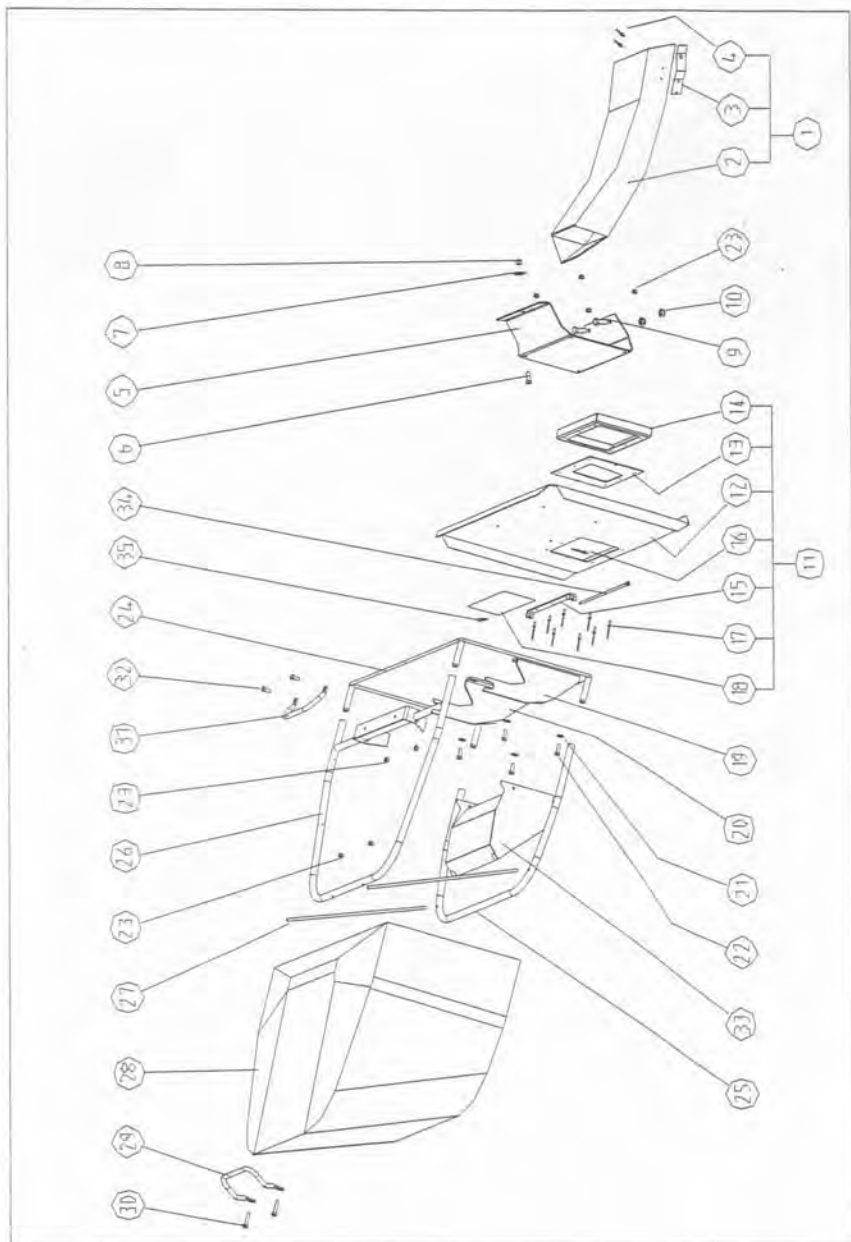
# PARTS LIST - 30" REAR DISCHARGE MOWING ATTACHMENT




## PARTS LIST -30" REAR DISCHARGE MOWING ATTACHMENT

Item	Part No.	Description	Qty
1	13316	Deck,Cutter,30",Rear Discharge	1
2		Housing,Cutter,30",Rear Discharge	1
3	PR0308	Rivet	1
4	SKIT08	Kit,Bearing Housing,Inc Belt Guides	1
5		Housing,Bearing	1
6	AM073	Guide,Belt	2
7	B0625M	Bolt	2
8	NM6NT	Nut,Hex,Nylon Insert,Thin	2
9	BB205215N	Bearing,Ball	2
10	AM029	Spacer,Bearing	1
11	B0620C	Bolt,Hex	4
12	NF06CN	Nut,Hex,Nylon Insert	4
13	13181	Spindle,Cutter,Inc Washer & Nut	1
14		Shaft,Spindle	1
15	13128	Washer,Flat	1
16	NHM20X1.5T	Nut,Hex,Thin	1
17	AM076H7	Disc,Cutter	1
18	SH0612C	Screw,Hex,UNC	4
19	N06CN	Nut,Hex,Nylon Insrt,Thin	4
20	KIT146	Kit,Mower Blade 180,& Fastener	2
21	SMB180	Set,Mower Blade 180	2
22		Blade,Mower,180,Extra High Flute	2
23	SKIT01D1	Kit,Fastener,Mower Blade	2
24		Bolt,Mower Blade	2
25		Washer,Wave	2
26		Nut,Hex,Nylon Insert	2
27	W203902	Washer,Flat	2
28	SK09	Set,Key,Woodruff,Steel	1
29		Key,Woodruff	2
30	AM030	Pulley	1
31	WM20S	Washer,Lock	1
32	KIT15	Brake,Cutter	1
33		Arm,Cutter Brake	1
34	AM033	Pad,Cutter Brake	1
35	PR0205	Rivet	2
36	AM034H0	Bracket,	1
37	AM035	Spring,Compression	1
38	NS05C	Nut,Square	1
39	13317	Rod,Adjusting,30" Cutter Brake	1
40	W051218	Washer,Flat	1
41	RP01	Pin,"R",Small	1
42	SH0512C	Screw,Hex	1
43	N05CN	Nut,Hex,Nylon Insert	2
44	SH0516C	Screw,Hex	1
45	13016	Pin,Pivot	1
46	SH0616M	Screw,Hex	1
47	NM6NT	Nut,Hex,Nylon Insert,Thin,	1
48	V31	Belt,"V"	1

PARTS LIST – 150 LITRE BAG CATCHER



## PARTS LIST -150 LITRE BAG CATCHER

Item	Part No.	Description	Qty
1	13314	Chute,Discharge	1
2		Section,Chute	1
3	AM080	Clip,Retaining	1
4	PR0306	Rivet	1
5	13310	Bracket,Mount,Catcher-Chassis	1
6	SH0616C	Screw,Hex	1
7	W0620HD	Washer,Flat	1
8	NF06CN	Nut,Hex,Nylon Insert	1
9	SH1230M	Screw,Hex	2
10	NM12NT	Nut,Hex,Nylon Insert,Thin	2
11	13320	Sub-Assy,Catcher Front	1
12		Panel,Catcher Front	1
13	13307	Seal,Chute Opening	1
14	13313	Flange,Chute Opening	1
15	13335	Bracket,Deflector	1
16	PR0306	Rivet	2
17	PR0308	Rivet	8
18	DEC108	Decal,Danger,Rear Discharge Opening	1
19	14148	Bracket,Catcher,Left	1
20	14149	Bracket,Catcher,Right	1
21	W05M202	Washer,Flat	4
22	SH0825M	Screw,Hex	4
23	NM8NT	Nut,Hex,Nylon Insert	8
24	13312	Frame,Catcher,Front,150L	1
25	14151	Frame,Catcher,Bottom	1
26	13315	Frame,Catcher,Top	1
27	13311	Strut,Catcher Frame	2
28	13322	Bag,Catcher,150L	1
29	14158	Handle,Rear,Grass Catcher	1
30	B0840M	Bolt,Hex	2
31	14159	Handle,Front,Grass Catcher	1
32	SH0820M	Screw,Hex	2
33	13334	Deflector,Discharge,Chute Opening 	1
34	13336	Pin,Deflector Pivot	1
35	RP01	Pin,"R",Small	1