



Among Petals is a One Wild pattern designed by Jen Parrocchini

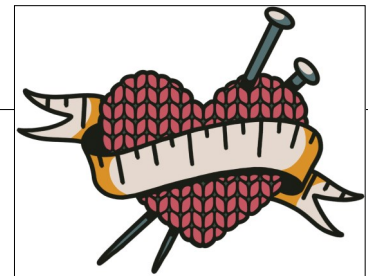
Photographer: Source Creative House

Editor: Annie Lin

Support: Jen@OneWildDesigns.com

Social: #AmongPetals

Join the [One Wild Slack group](#) for community, fit chat, and to show off your WIPs. We can't wait to knit with you!



AMONG PETALS

In perfume, it's off-notes that give fragrances their depth, dimension, and realism. Whether it's decay, must, funk, or another challenging smell, the contrast makes for an authentic experience and keeps the sweetness of fragrance from being cloying. How much more so full spring, with its abundance of petals and blooms – first gracing branches and stalks but overflowing their banks, thick and spoiling on the sidewalk, windshield, the patio, and lawn?

Among Petals offers all the delicacy and perfection of a spray of blooms – but in a yarn that has its own spirit. The linen, silk, and alpaca work together to create a stitch texture that isn't uniform, that wavers in places, that doesn't quite hide the work that stitched it. It's this authenticity that gives Among Petals its soul.

CONSTRUCTION

Among Petals is knit in the round from the bottom up and the shoulders are seamed. Stitches are picked up and knit for the sleeves, which are worked seamlessly. Stitches are picked up and immediately bound-off using a decorative braid for the neckline.

This pullover features A-line shaping, dropped shoulders, and instructions for short row bust shaping in four optional sizes.

TECHNIQUES USED

- Knitting lace
- Twisting stitches
- Working in the round
- Working directional shaping
- Working German Short Rows
- Seaming (for the shoulders only)
- Picking up and knitting
- Working a Braided Bind-off (worked after you pick up stitches for the neckline)

Knitters will be most comfortable working this pattern if they can read their knitting (recognize a knit and a purl on the needle), and if they have some experience knitting lace.

SIZE INFORMATION

GAUGE

26 stitches and 36 rows/rounds over 4 inches / 10 cm in Stockinette stitch with size A needles.

SIZES

1 (2, 3, 4) [5, 6, 7] (8, 9, 10, 11)

PICK A GARMENT SIZE

Choose the size closest to your actual upper chest measurement.

Upper chest is measured above the full bust, at an angle close to diagonal beneath the underarms, and straight across the back.

Pick a Garment Size											
	1	2	3	4	5	6	7	8	9	10	11
Body upper chest - inches	27.75	31.75	35.75	39.25	42.25	44.5	47.5	50.5	53.5	56.5	59.25
Body upper chest - cm	70.5	80.5	91	99.5	107.5	113	120.5	128.5	136	143.5	150.5

PICK A CUP SIZE

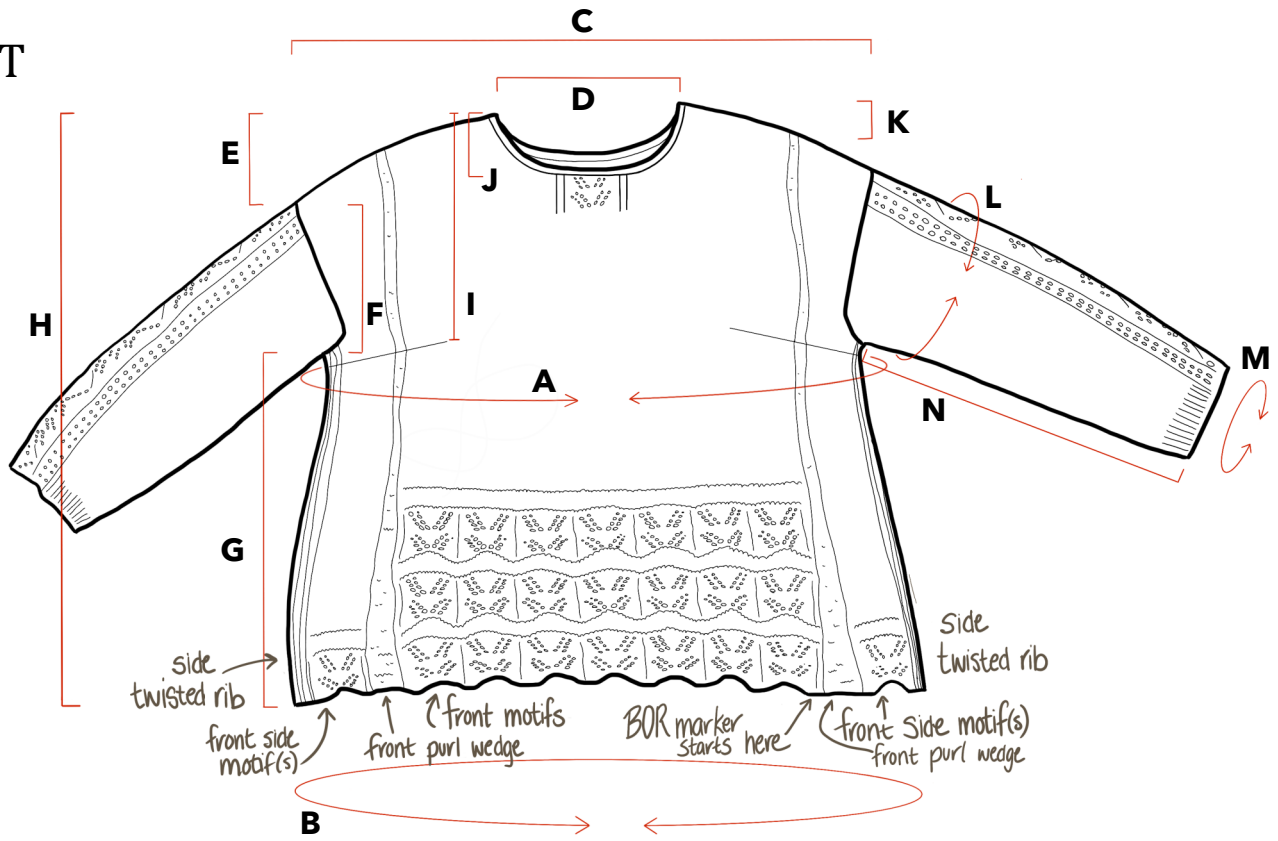
Among Petals includes instructions for knitting short rows to accommodate breasts. Short rows add length to the front of the garment only, so that the hem does not rise in the front. To choose a cup size, measure your body from the top of the shoulder to your underbust in both the back and the front. Subtract the back length from the front length then subtract 2 inches / 5 cm and choose a cup size based on the result.

Pick a Cup Size		
Your result:	Cup	Adds to the front
< than 1.25 inch / 3.5 cm	None	N/A
1.25 - 2.75 inches / 3.5 - 6.5 cm	1	1.25 inches / 3.5 cm
2.75 - 4 inches / 6.5 - 10 cm	2	2.75 inches / 6.5 cm
4 - 5.25 inches / 10 - 13.5 cm	3	4 inches / 10 cm
> 5.25 inches / 13.5 cm	4	5.25 inches / 13.5 cm

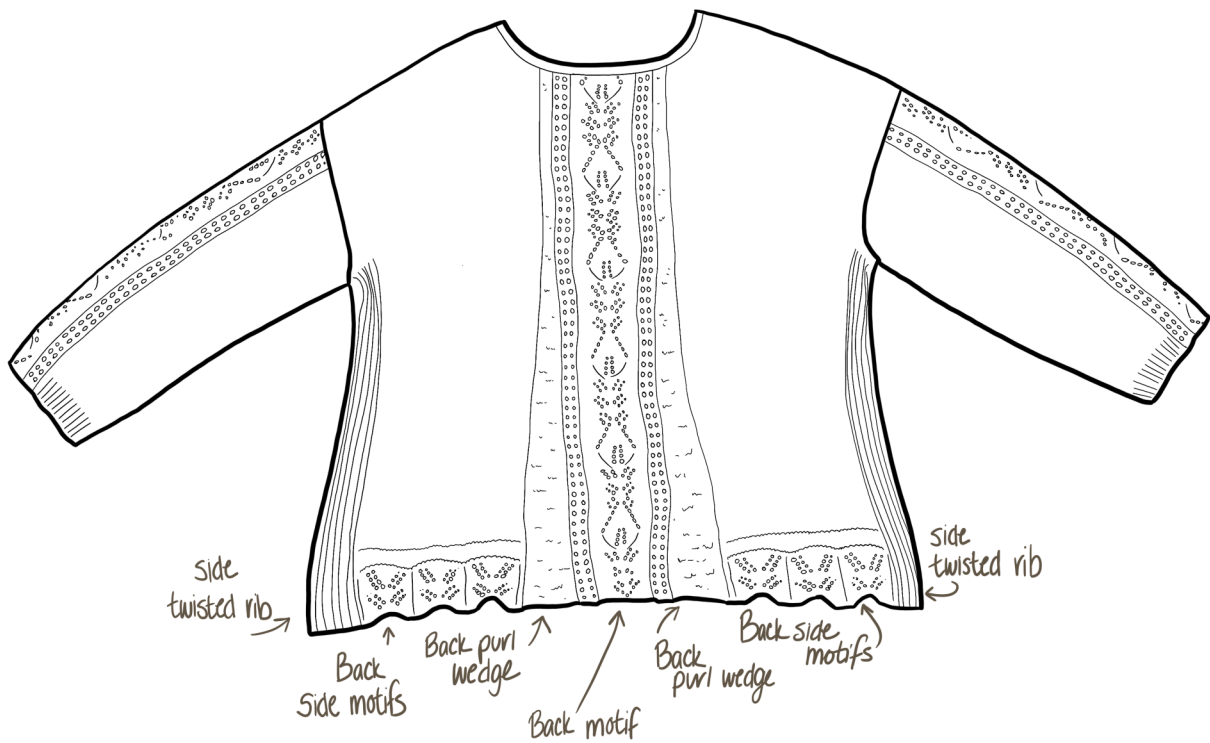
Jen is wearing size 4, Cup 2, with .5 inch / 1 cm of *negative* ease at the full bust and 2 inches / 5 cm of positive ease at the upper arm. Her upper chest is 41 inches / 102.5 cm and she is 5'8" / 173 cm tall.

SCHEMATIC

FRONT



BACK



Finished Measurements											
	1	2	3	4	5	6	7	8	9	10	11
Inches											
A - Full bust	33	36.75	41.5	45	49.75	53.25	57	60.75	66.25	69.25	74
B - Hip	39.25	43	47.25	51	55.5	58.75	62.75	66.75	71.5	74.75	79.25
C - Cross shoulder	19.75	20.75	23	24.25	25	25.75	27	28.25	29.75	31.5	33
D - Neck width	6.25	6.7	6.75	7.25	7.5	7.5	8.25	8.25	8.5	8.75	9
E - Shoulder drop	3.75	3.75	3.75	3.75	3.75	3.75	3.75	3.75	3.75	3.75	3.75
F - Underarm depth	5.25	5.5	5.75	6.5	6.75	7	7.5	8	8.5	9	9.25
G - Underarm to hem	16	15.75	15.5	15.25	15	14.75	14.5	14.5	14	13.75	13.5
H - Total length	25	25	25	25.5	25.5	25.5	25.75	26.25	26.25	26.5	26.5
I - Bust depth	9.75	10	10.75	11.5	11.5	12.25	13.25	14.25	15	15.75	16.75
J - Front neck depth	3.5	3.5	3.5	3.5	3.5	3.5	3.5	3.5	3.5	3.5	3.5
K - Back neck depth	1.5	1.5	1.5	1.5	1.5	1.5	1.5	1.5	1.5	1.5	1.5
L - Upper arm	12.5	13.5	14.75	16.25	17	18.25	20	21.5	23	24.25	25.75
M - Forearm	9.75	10.75	11.25	12	13	13.75	14	14.25	14.75	15	15.25
N - Underarm to cuff	14.75	14.5	13.75	13.25	13	13	12.25	12	11.5	11	11
cm											
A - Full bust	82	92	103.5	112.5	124.5	133	142.5	152	165.5	173.5	185
B - Hip	98	107.5	118	127.5	139	147	157	167	179	187	198
C - Cross shoulder	49.5	52	57.5	60.5	62.5	64.5	67.5	70.5	74.5	79	82.5
D - Neck width	16	16.5	16.5	18	19	19	20.5	20.5	21.5	22	23
E - Shoulder drop	9	9	9	9	9	9	9	9	9	9	9
F - Underarm depth	13.5	14	14.5	16	16.5	17	19	20	21	22	23.5
G - Underarm to hem	40	39.5	39	38.5	37	36.5	36	36	35	34.5	34
H - Total length	62.5	62.5	62.5	63.5	62.5	62.5	64	65	65	65.5	66.5
I - Bust depth	24	25.5	26.5	28.5	29	31	33.5	35.5	38	39.5	41.5
J - Front neck depth	9	9	9	9	9	9	9	9	9	9	9
K - Back neck depth	4	4	4	4	4	4	4	4	4	4	4
L - Upper arm	31.5	33.5	36.5	40.5	43	46	49.5	53.5	57.5	60.5	64.5
M - Forearm	24.5	26.5	28	29.5	33	34.5	35	36	36.5	37.5	38
N - Underarm to cuff	36.5	36	34.5	33.5	33	32	30.5	30	29	27	27

INTENDED FIT

Among Petals is designed to fit with approximately 5.25 inches / 13 cm of positive ease at the fullest part of your bust and 3.25 inches / 8 cm of positive ease at the upper arm.

This is a tunic-length garment; the total length is measurement H, above. To see where the hem will land on your frame, measure straight down from your inner neck point (where your shoulder meets your neck, halfway between front and back).