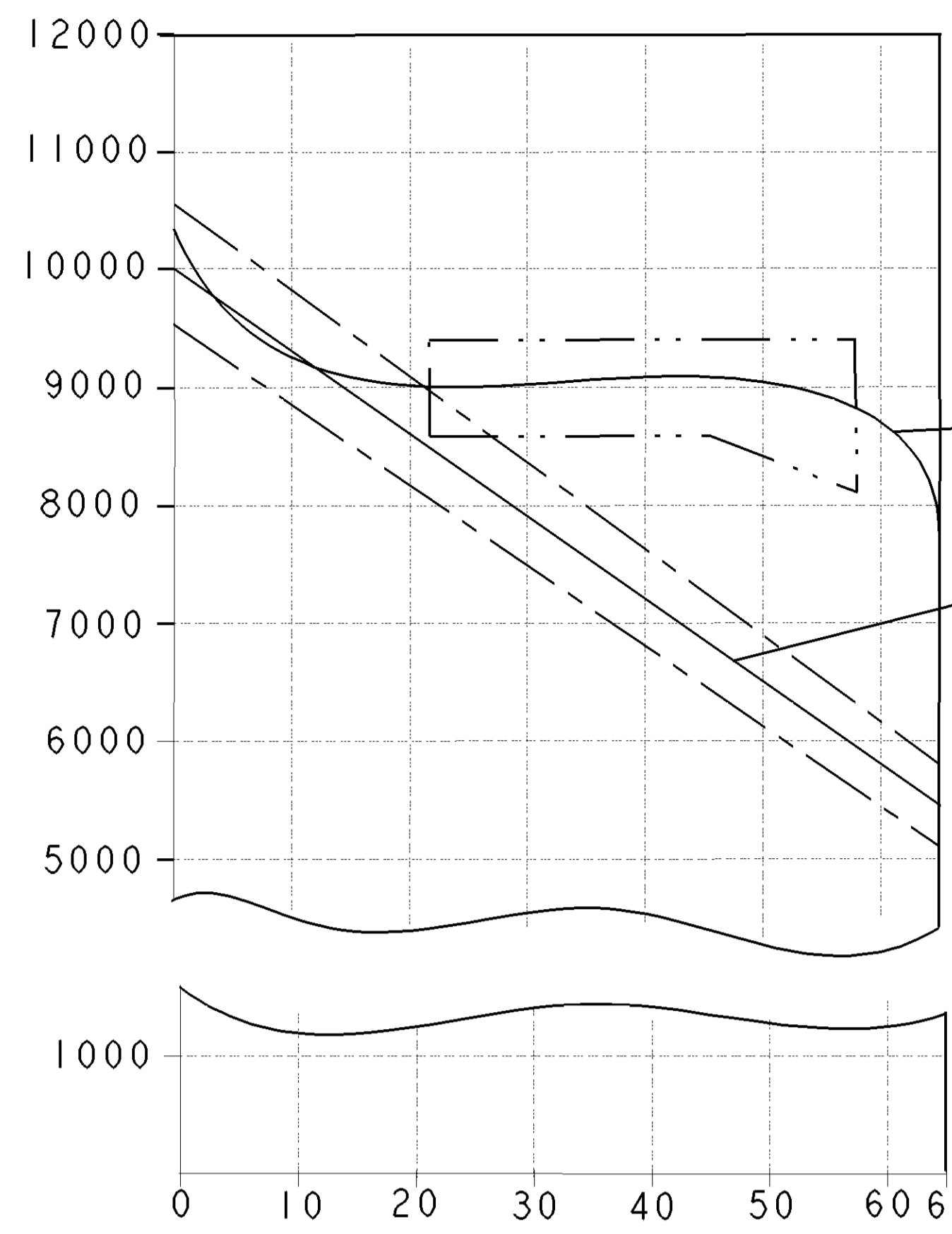


SURFACE PROTECT. OBERFL. SCHUTZ	
I	POWDER COATING JED-240-7
II	Zn JED-256-5
III	PHOSPHATING & OILING JED-371
IV	AL. JED-259
V	RUBBER / PLASTIC
TECHNICAL DATA TECHNISCHE DATEN	

FORCE :  
KRAFT : N  
FORCE :  
FORZA :

PERFORMANCE CHARACTERISTICS



AIR VOLUME OF SERVICE BRAKE PART AT 2/3 OF ITS STROKE  
HUBVOLUMEN DES BETRIEBSBREMSTEILES BEI 2/3 HUB  
VOLUME D'AIR DU DISPOSITIF DU FREIN DE SERVICE A 2/3 DE LA COURSE  
VOLUME D'ARIA DELLA SEZIONE DI FRENO DI SERVIZIO A 2/3 DELLA CORSA : ca.  $0.80 \times 10^3 \text{ cm}^3$

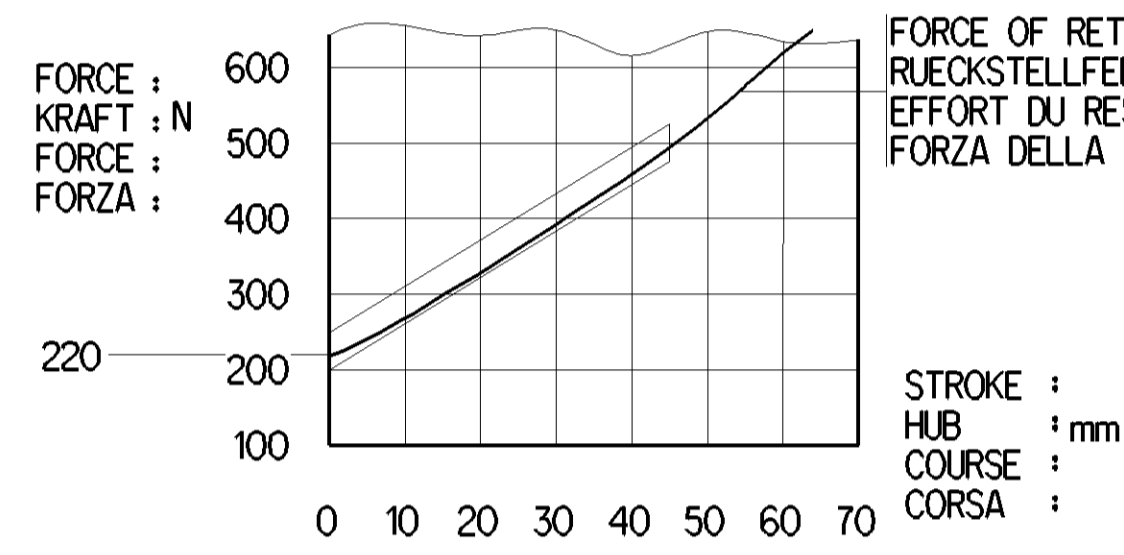
AIR VOLUME OF SPRING BRAKE PART  
HUBVOLUMEN DES FEDERSPEICHERS  
VOLUME D'AIR DU DISPOSITIF RESSORT  
VOLUME D'ARIA DELLA SEZIONE A MOLLA : ca.  $1.675 \times 10^3 \text{ cm}^3$

OUTPUT FORCE OF SERVICE BRAKE PART AT  
KRAFTABGABE DES BETRIEBSBREMSTEILES BEI  
EFFORT DE POUSSEE DU DISPOSITIF DU FREIN DE SERVICE SOUS  
FORZA DI SPINTA DELLA SEZIONE DI FRENO DI SERVIZIO PER : 6.5 bar

OUTPUT FORCE OF SPRING BRAKE PART, RELEASE PRESSURE  
KRAFTABGABE DES FEDERSPEICHERS, LOESEDRUCK  
EFFORT DE POUSSEE DU DISPOSITIF RESSORT, PRESSION DE DESSERRAGE  
FORZA DI SPINTA DELLA SEZIONE A MOLLA, PRESSIONE DI RILASCIO :  $4.9 \pm 0.4 \text{ bar}$

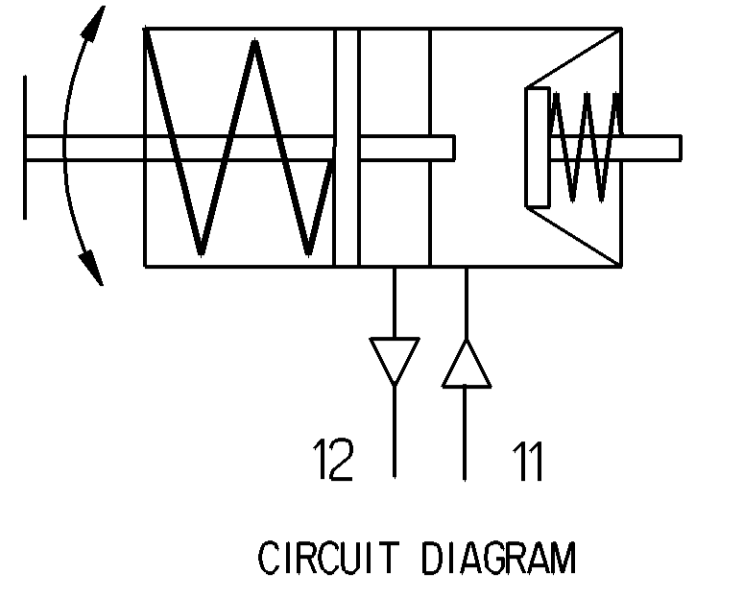
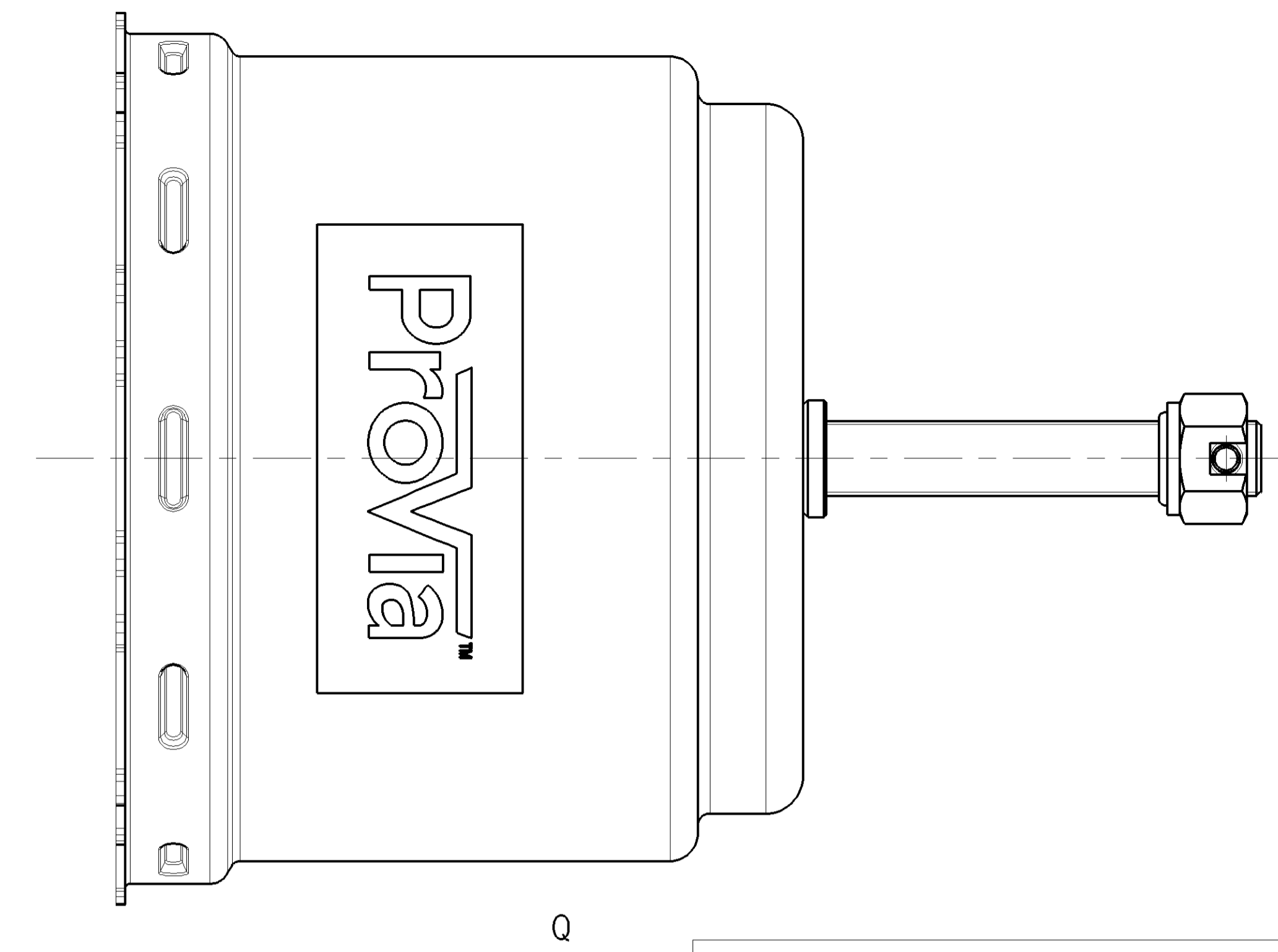
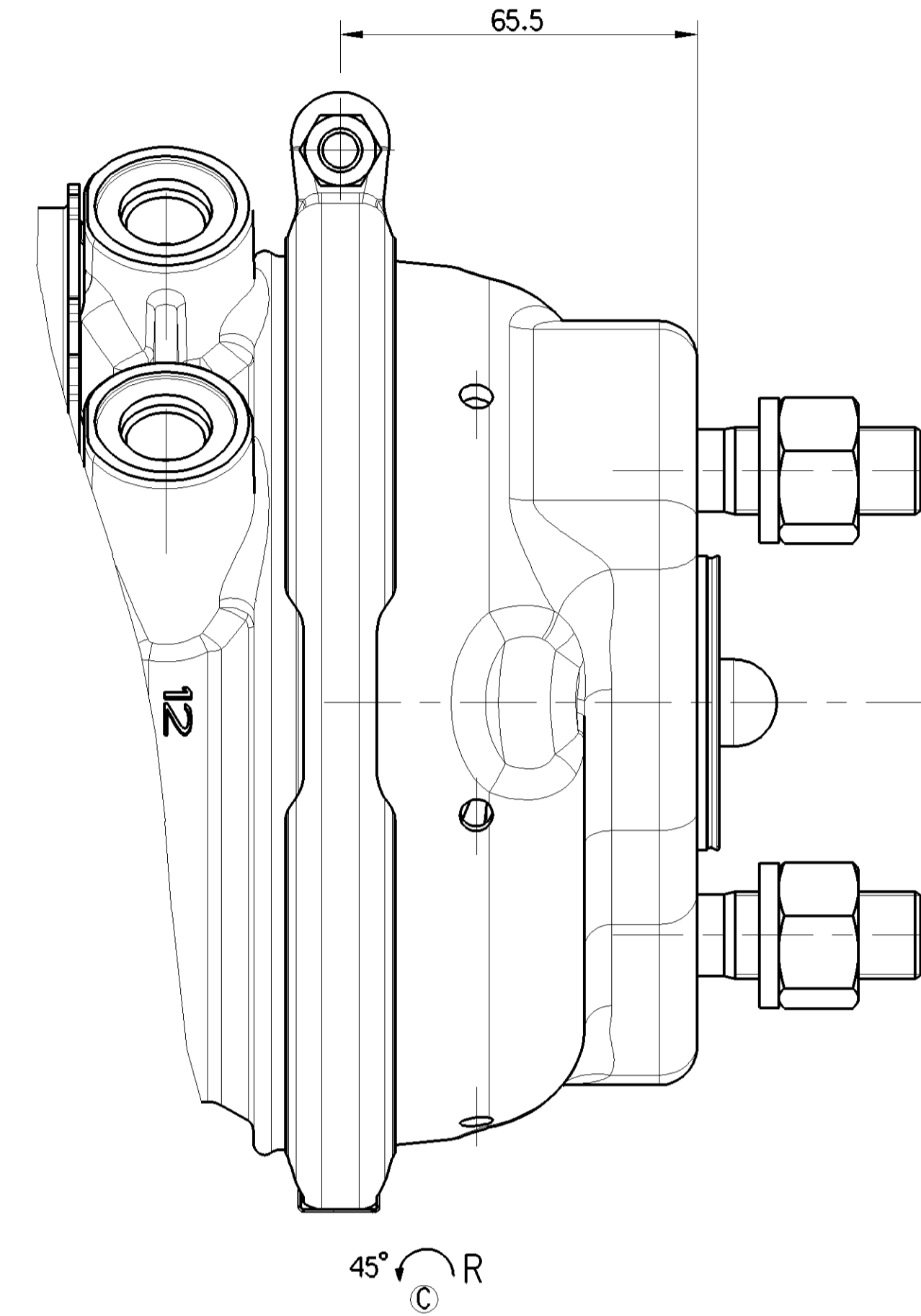
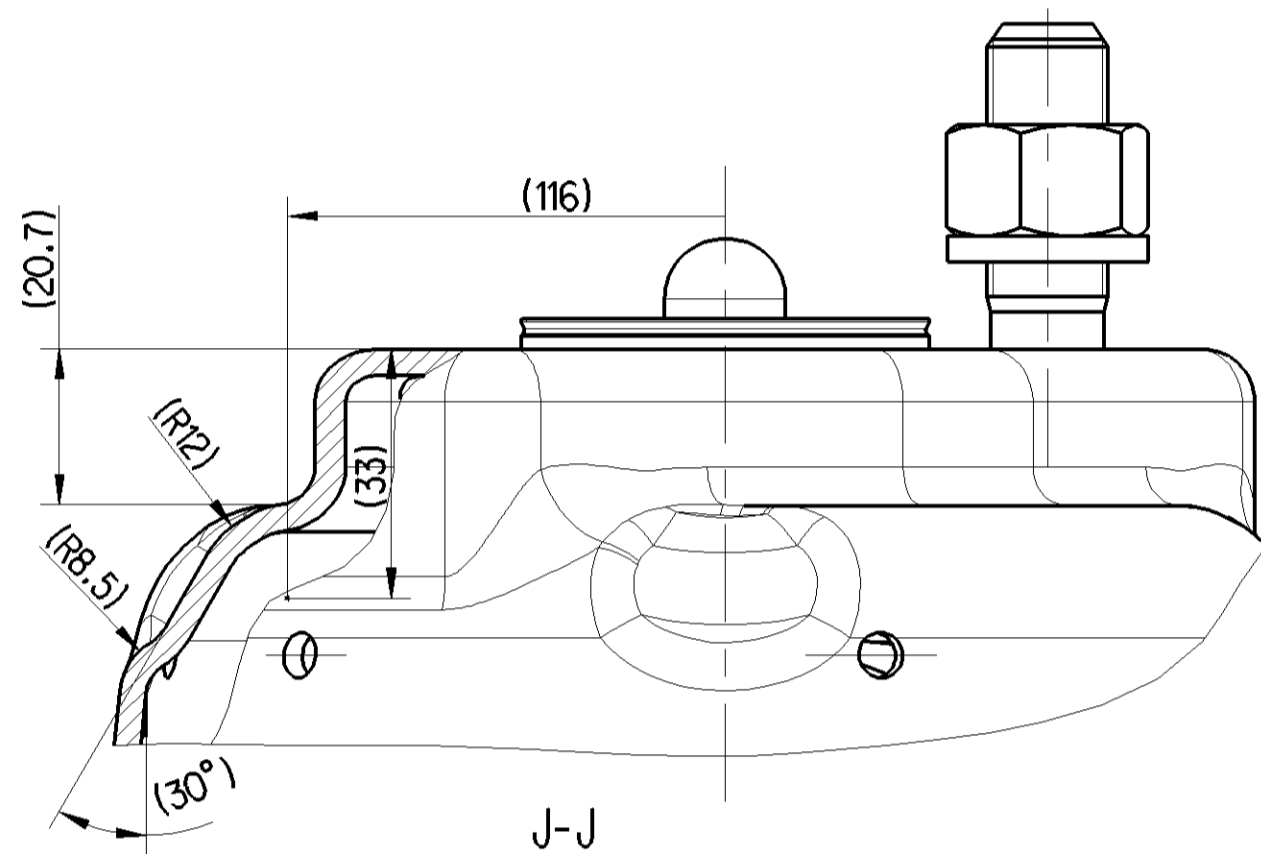
STROKE :  
HUB : mm  
COURSE :  
CORSA :

NOMINAL VALUES GIVEN FOR SERVICE SIDE , TOLERANCE BAND AS PER DIN 74060-3  
NOMINAL VALUES GIVEN FOR SPRING SIDE , TOLERANCE BAND  $\pm 5\%$



FORCE OF RETURN SPRING OF SERVICE BRAKE PART  
RUECKSTELLFEDERKRAFT DES BETRIEBSBREMSTEILES  
EFFORT DU RESSORT DE RAPPEL DU DISPOSITIF DU FREIN DE SERVICE  
FORZA DELLA MOLLA DI RITORNO DELLA SEZIONE DI FRENO DI SERVIZIO

STROKE :  
HUB : mm  
COURSE :  
CORSA :



MEDIUM : AIR  
MEDIUM : LUFT  
FLUIDE : AIR  
FLUIDO : ARIA

NOMINAL DIAMETER :  
NENNWEITE : MIN  $\varnothing 8.5$   
DIAMETRE NOMINAL :  
DIAMETRO NOMINALE :

WIDTH ACROSS FLATS  
SCHLUSSELWEITE  
SURPLATS  
LARGHEZZA IN CHIAVE

THERMAL RANGE OF APPLICATION :  
THERMISCHER ANWENDUNGSBEREICH :  $-40^\circ\text{C} \dots +80^\circ\text{C}$   
GAMME D'APPLICATION THERMIQUE :  
CAMPO TERMICO D'APPLICAZIONE :

PORT : SERVICE BRAKING SYSTEM, WORKING PRESSURE : Pe max. = 10 bar  
ANSCHLUSS : 11 BETRIEBSBREMSEANLAGE, BETRIEBSDRUCK  
ORIFICE : DISPOSITIF DE FREINAGE DE SERVICE, PRESSION D'UTILISATION  
ORIFIZIO : DISPOSITIVO DI FRENATURA DI SERVIZIO, PRESSIONE DI ESERCIZIO

(TEMPORARILY / KURZZEITIG / DE COURTE DUREE / (BREVE TEMPO SOLO) : Pe max. = 13 bar

PORT : SPRING BRAKE CYLINDER, WORKING PRESSURE : Pe max. = 8.5 bar  
ANSCHLUSS : 12 FEDERSPEICHERZYLINDER, BETRIEBSDRUCK  
ORIFICE : CYLINDRE A RESSORT, PRESSION D'UTILISATION  
ORIFIZIO : CILINDRO A MOLLA, PRESSIONE DI ESERCIZIO

(TEMPORARILY / KURZZEITIG / DE COURTE DUREE / (BREVE TEMPO SOLO) : Pe max. = 11 bar

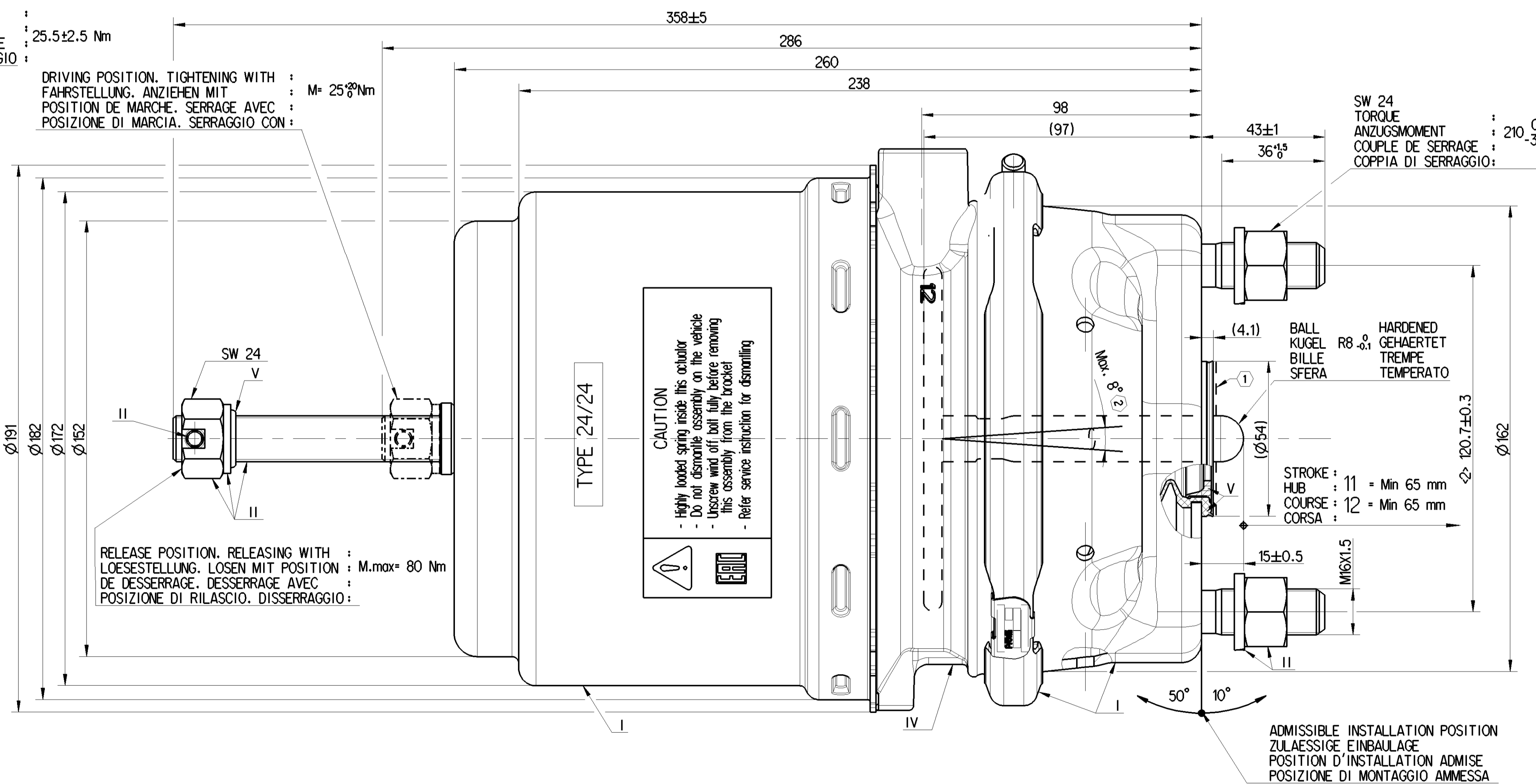
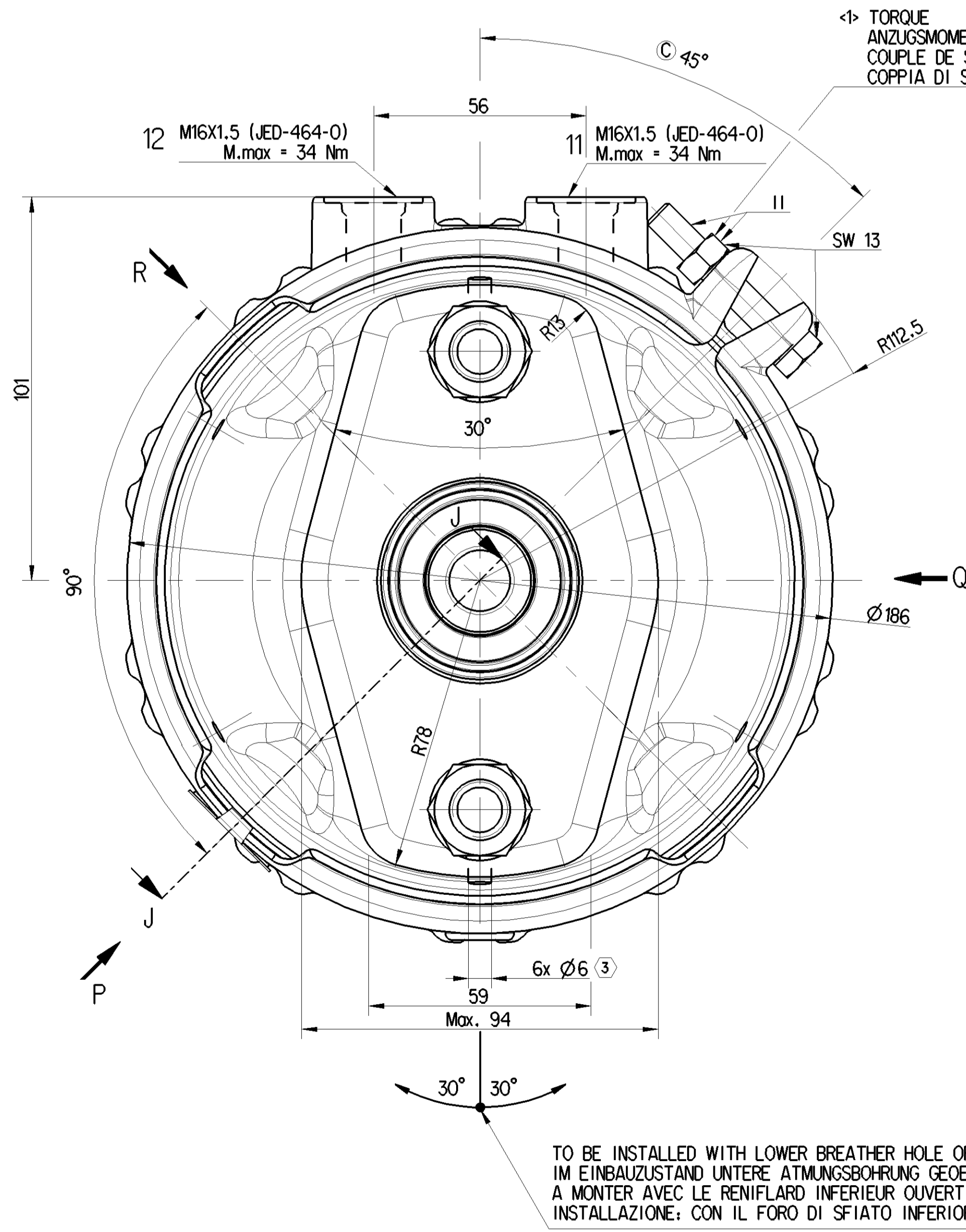
SEALING SURFACE  
DICHTFLAECHE  
SURFACE D'ETANCHEITE  
SUPERFICII DI TENUTA

DEFLECTION : max. 8° AT STROKE 0 mm  
AUSLENKUNG : BEI HUB  
DEFLEXION : A COURSE  
DEVIAZIONE : A CORSA

OPEN BREATHER HOLE  
OFFEN ATMUNGSBOHRUNG  
OUVERT TROU RENIFLEUR  
APERTO FORO RESPIRATORE

UNIT DRAWN WITH AIR APPLIED AT PORT 12  
EINHEIT MIT LUFT APPLIED AT PORT GEZEICHNET 12  
UNIDADE DESENHADO COM ARIA APLICADA NA PORTA 12  
UNITA' DISEGNATA CON ARIA APPLICATO A PORTA 12

DELIVERY ANLIEFERUNG LIVRAISON FORNITURA  
RELEASE POSITION LOESESTELLUNG POSITION DE DESSERRAGE POSITIONE DI RILASCIO  
DRIVING POSITION FAHRSTELLUNG POSITION DE MARCHÉ POSITIONE DI MARCIA



TORQUE ANZUGSMOMENT COUPLE DE SERRAGE COPPIA DI SERRAGGIO :  $25.5 \pm 2.5 \text{ Nm}$

DRIVING POSITION, TIGHTENING WITH : FAHRSTELLUNG, ANZIEHEN MIT : M =  $25.5^\circ \text{ Nm}$   
POSITION DE MARCHÉ, SERRAGE AVEC : POSITIONE DI MARCIA, SERRAGGIO CON :

RELEASE POSITION, RELEASING WITH : LOESESTELLUNG, LOSEN MIT POSITION : M.max = 80 Nm  
DE DESSERRAGE, DESSERRAGE AVEC : POSITIONE DI RILASCIO, DISSERRAGGIO :

CAUTION  
- High loads spring onto the actuator  
- Do not dismantle assembly on the vehicle  
- Unscrew end of ball link before removing  
- Refer service instruction for dismantling

SW 24 TORQUE ANZUGSMOMENT COUPLE DE SERRAGE COPPIA DI SERRAGGIO :  $210 \text{ }^0_{-30} \text{ Nm}$

BALL KUGEL R8 4 HARDENED BILLE GEAHARTET TEMPERATO  
SPHERE

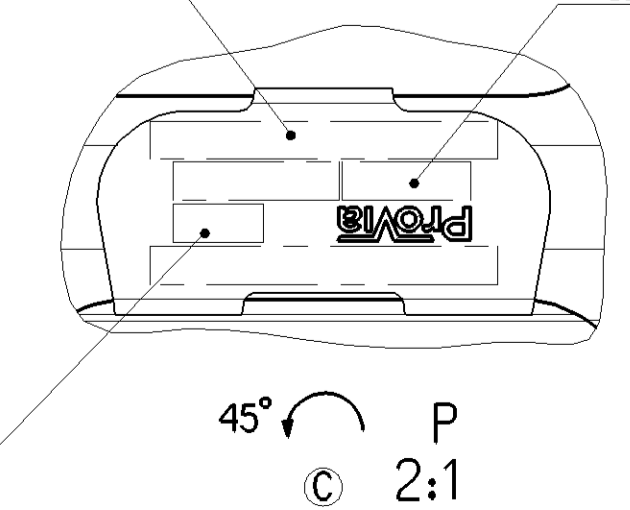
STROKE :  
HUB : 11 = Min 65 mm  
COURSE : 12 = Min 65 mm  
CORSA :

ADMISSIBLE INSTALLATION POSITION ZULASSIGE EINBAULAGE POSITION D'INSTALLATION ADMISE POSITIONE DI MONTAGGIO AMMESSA

ProVia IDENTIFICATION NUMBER  
ProVia TEILE NUMBER  
NUMERO D' IDENTIFICATION ProVia  
NUMERO D' IDENTIFICAZIONE

WEEK / YEAR OF MANUFACTURE  
FERTIGUNGSWOCHE / JAHR  
SEMAINE / ANNEE DE FABRICATION  
SETTIMANA / ANNO DELLA FABBRICAZIONE

MANUFACTURING PLANT  
PRODUKT / ORTSSTÄTTE, JED- 225  
LIEU DE FABRICATION  
LUOGO DI FABBRICAZIONE



SAFETY CHARACTERISTICS SICHERHEITSMERKMALE CARACTERISTIQUES DE SÉCURITÉ CARATTERISTICHE DI SICUREZZA

SIGNIFICANT CHARACTERISTICS WESSENTLICHE MERKMALE CARACTERISTIQUES SIGNIFIANTES CARATTERISTICHE SIGNIFICATIVE

General Specifications JED-334-1, Size ISO 14400 LP		Design 44600*		ProVia	
Further Technical Data: PRO 461 101 0		Title: System		SPRING BRAKE ACTUATOR DISC	
Doc. Code: 035	Sheet: 1	To: 5	From: 1	24/24-65mm	
General Tolerances: JED-261		2017-10-17		Screw	
Range of Nominal Dimensions (a mm)		2017-11-06		Asst/turner	
Class 0	± 50	± 180	± 400	Screw	
Class 1	± 0.5	± 1.0	± 1.5	± 2.0	Sheet
Medium	X 1.0	2.0	3.0	4.0	± 3°
Course	2.0	3.5	5.0	6.5	
Tapped Holes acc. JED-464-0		9.919		11 (16/28.0)	
Tolerance class: Approx. Dimensioned		A 0		CFO	
		174038		4 C 5400_JAM	
		2016-04-22		006 ML 1/1	