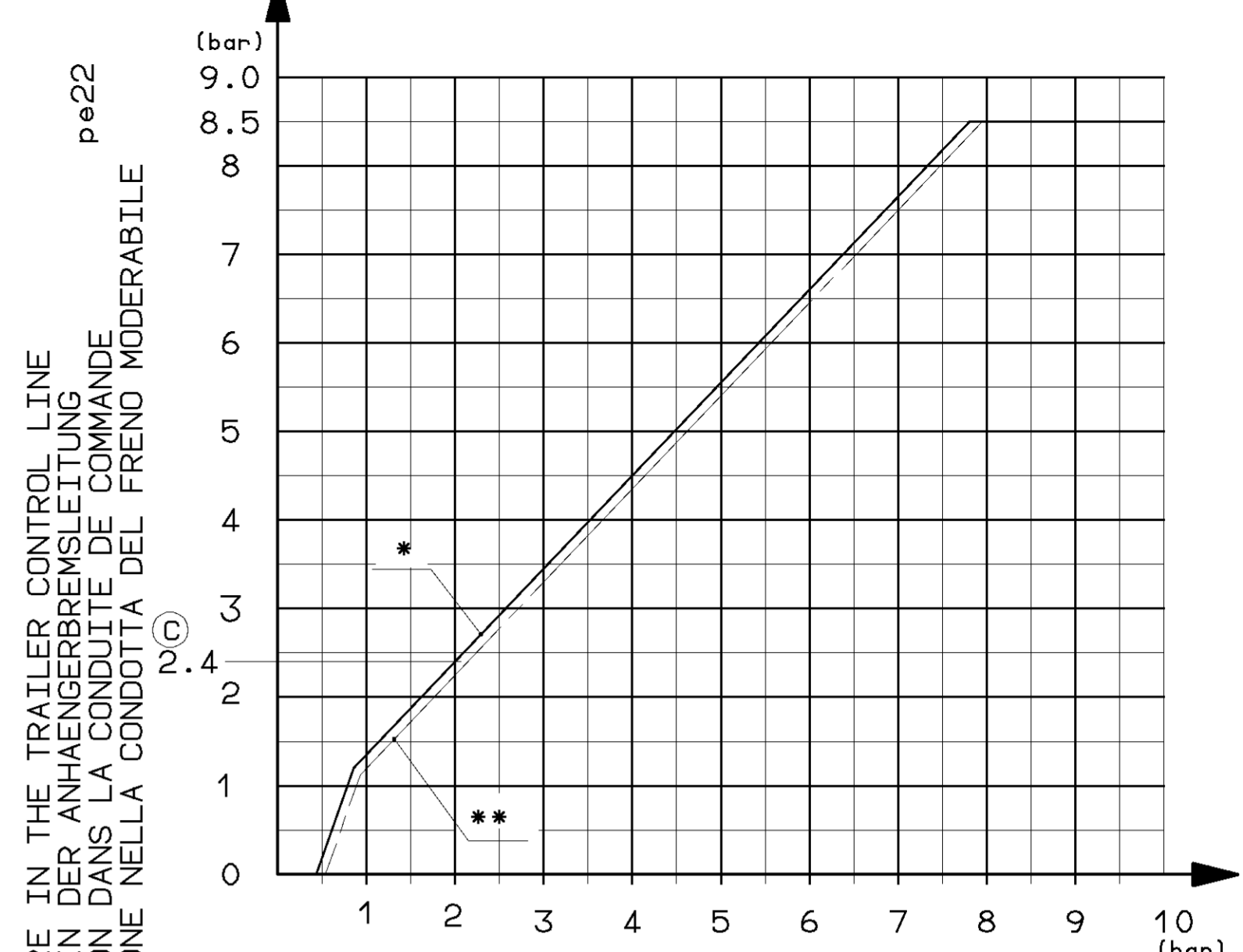
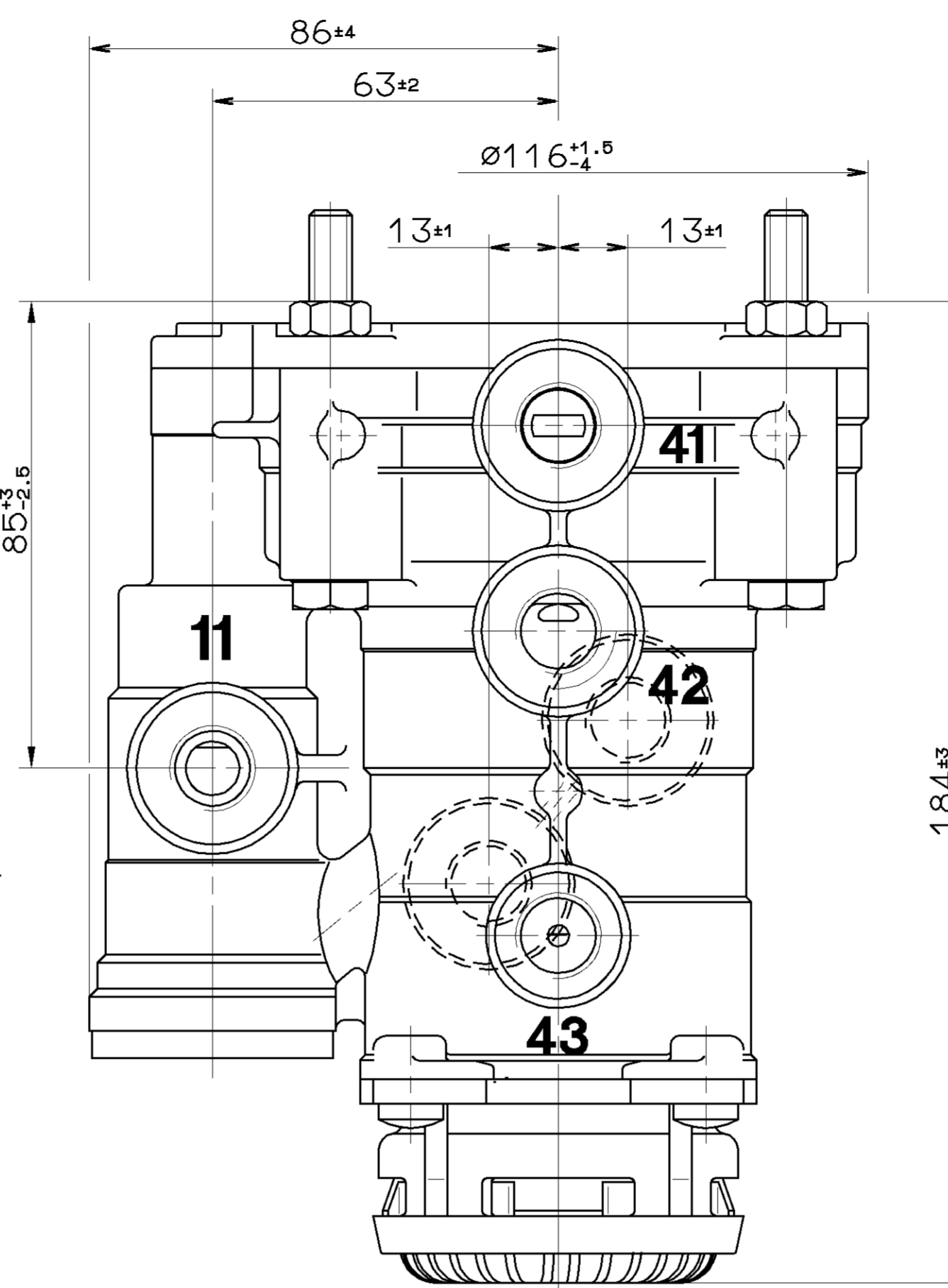
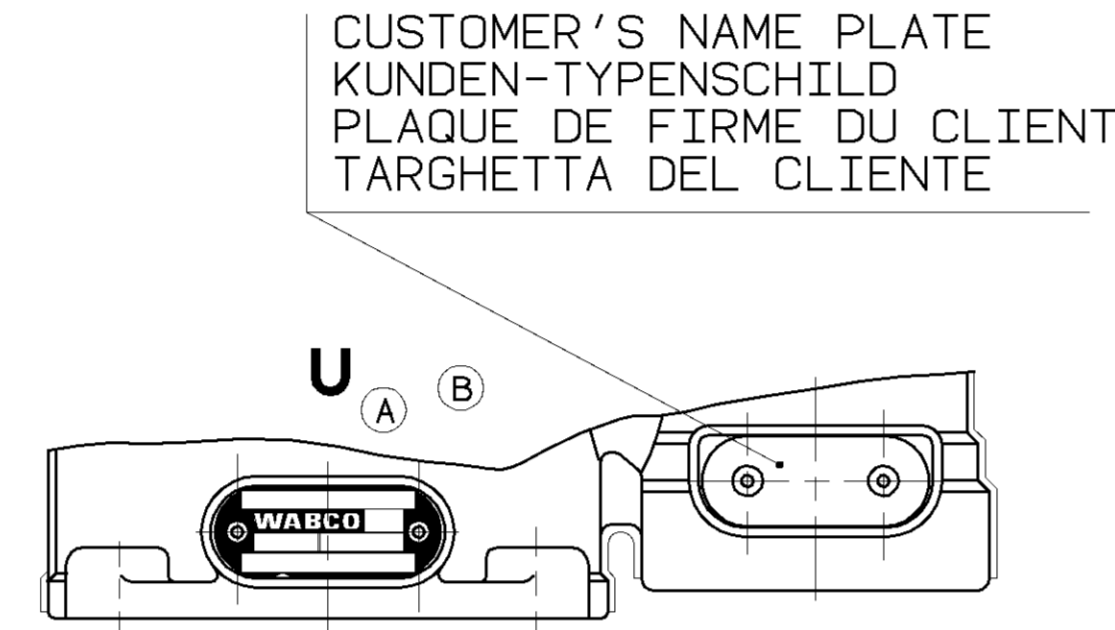


EXHAUST  
ENTLUEFTUNG  
ECHAPPEMENT  
SCARICO



PRESSURE IN THE TRAILER CONTROL LINE  
pe22  
PRESSURE IN THE SERVICE BRAKE LINE  
pe41, pe42  
DRUCK IN DER BETRIEBSBREMSLEITUNG  
PRESSION DANS LA CONDUITE DE FREIN DE SERVICE  
PRESSIONE NELLA CONDOTTA DEL FRENO DI SERVIZIO

11 = SUPPLY LINE INLET  
pe max.=8.5 bar  
TEMPORARILY  
KURZZEITIG  
DE COURTE DUREE  
BREVE TEMPO SOLO  
pe max.=10 bar

12 = SUPPLY LINE  
pe 12  
CONDUITE D'ALIMENTATION  
CONDOTTA DI ALIMENTAZIONE

22 = BRAKING LINE TO THE TRAILER  
pe 22  
BREMSLEITUNG ZUM ANHAENGER  
CONDUITE DE FREINAGE A LA REMORQUE  
CONDOTTA DI FRENATURA AL RIMORCHIO

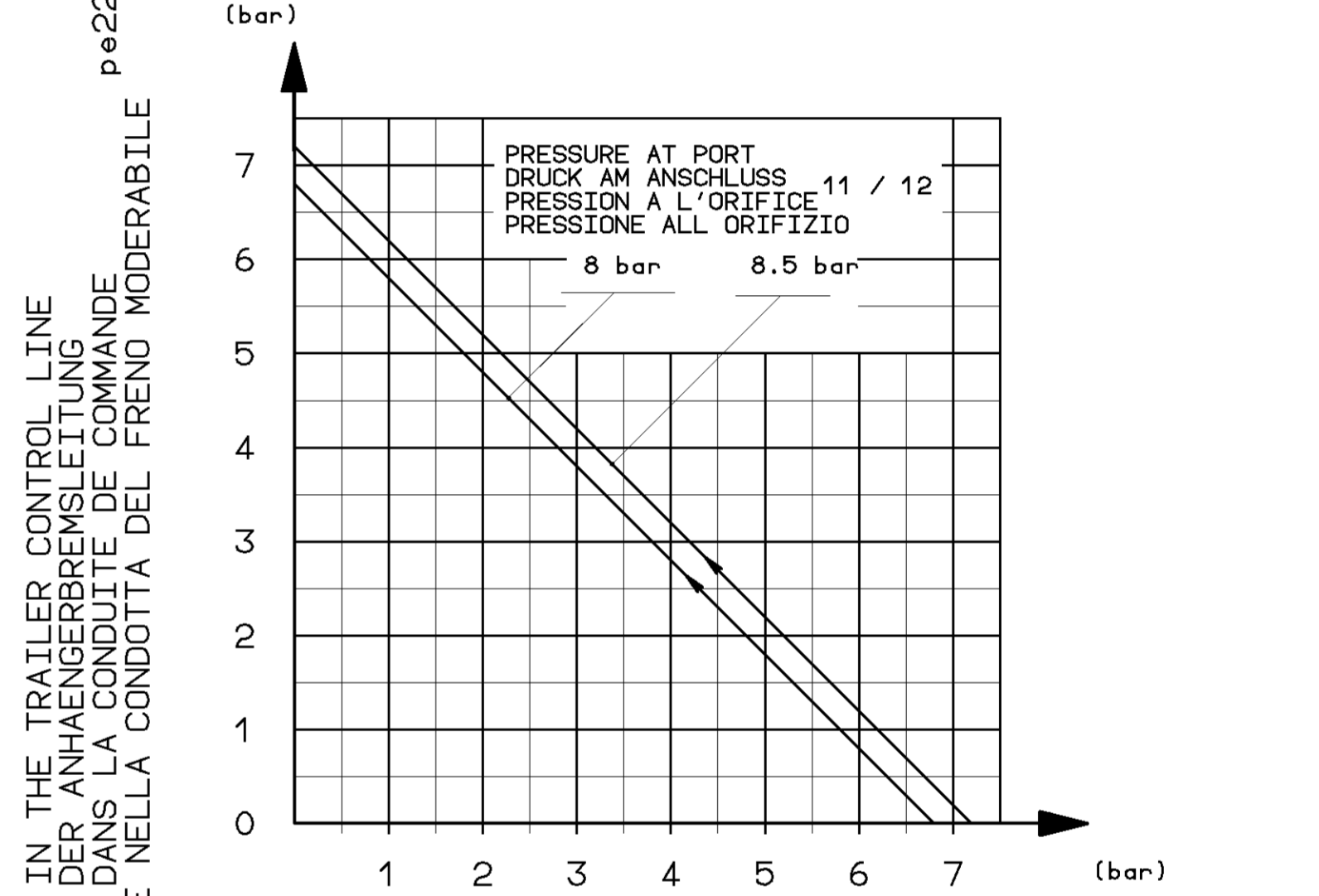


41 = SERVICE BRAKING SYSTEM (CIRCUIT 1)  
pe max.=10 bar  
BETRIEBSBREMSANLAGE (KREIS 1)  
DISPOSITIF DE FREINAGE DE SERVICE (CIRCUIT 1)  
DISPOSITIVO DI FRENATURA DI SERVIZIO (CIRCUITO 1)

TEMPORARILY  
KURZZEITIG  
DE COURTE DUREE  
BREVE TEMPO SOLO  
pe max.=12 bar

42 = SERVICE BRAKING SYSTEM (CIRCUIT 2)  
pe max.=10 bar  
BETRIEBSBREMSANLAGE (KREIS 2)  
DISPOSITIF DE FREINAGE DE SERVICE (CIRCUIT 2)  
DISPOSITIVO DI FRENATURA DI SERVIZIO (CIRCUITO 2)

TEMPORARILY  
KURZZEITIG  
DE COURTE DUREE  
BREVE TEMPO SOLO  
pe max.=12 bar



PRESSURE IN THE TRAILER CONTROL LINE  
pe22  
PRESSURE IN THE SPRING BRAKE CYLINDER  
pe43  
DRUCK IM FEDERSPEICHERZYLINDER  
PRESSION DANS LE CYLINDRE DE FREIN A RESSORT  
PRESSIONE NEL CILINDRO DEL FRENO A MOLLA

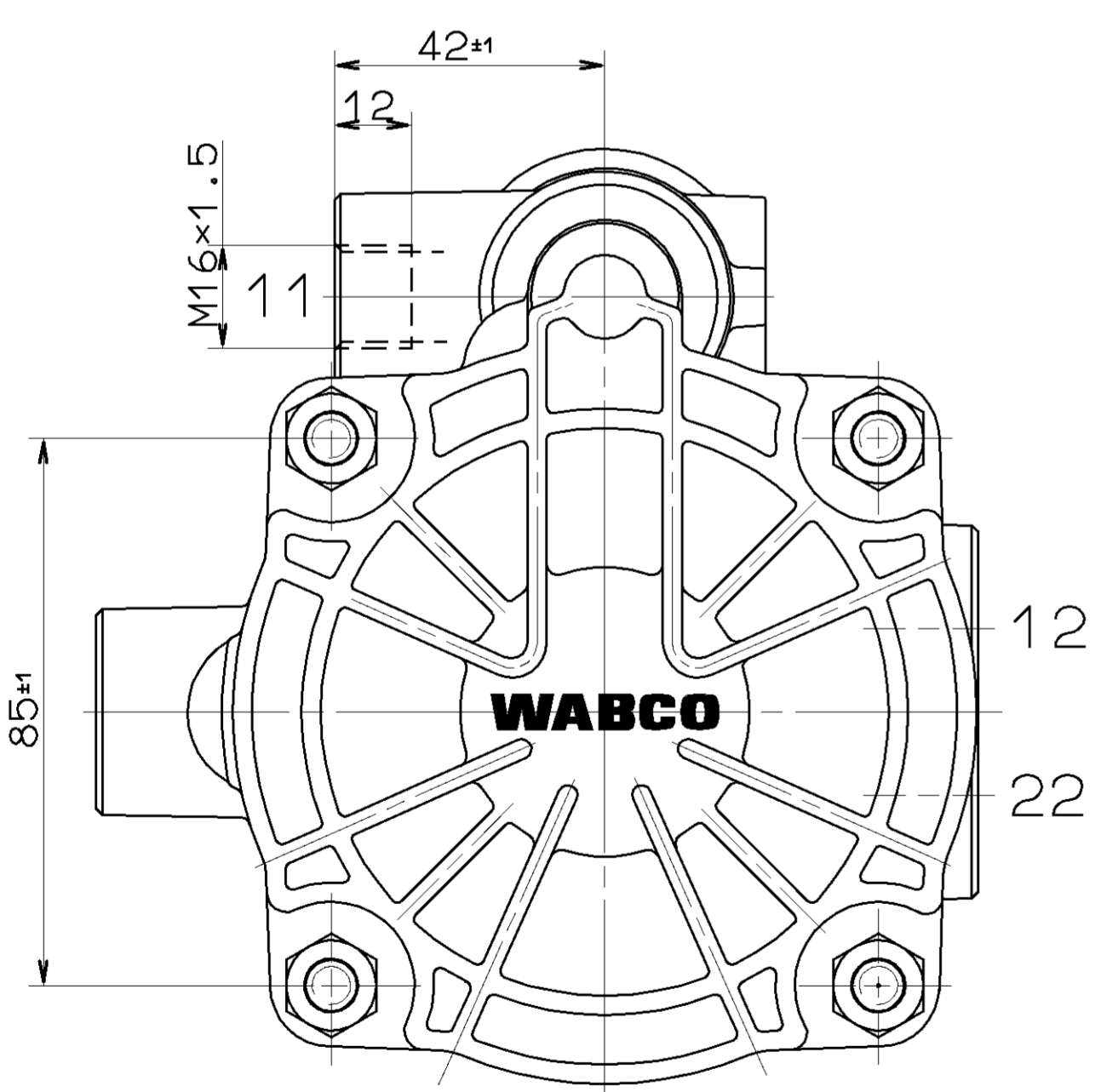
THERMAL RANGE OF APPLICATION:  
THERMISCHER ANWENDUNGSBEREICH: -40°C...+80°C  
APPLICATION THERMIQUE:  
CAMPO DI APPLICAZIONE THERMICA: MEDIUM: AIR  
MEDIUM: LUFT  
FLUIDE: AIR  
FLUIDO: ARIA

43 = PARKING BRAKING SYSTEM  
pe 43  
FESTSTELLBREMSANLAGE  
DISPOSITIF DE FREINAGE DE STATIONNEMENT  
DISPOSITIVO DI FRENATURA DI STAZIONAMENTO

WORKING PRESSURE:  
BETRIEBSDRUCK: MAX.pe = 8.5 bar  
PRESSION DE SERVICE: MAX.pe = 8.5 bar  
PRESSIONE DI SERVIZIO: MAX.pe = 10 bar  
TEMPORARILY  
KURZZEITIG  
DE COURTE DUREE  
BREVE TEMPO SOLO

\* CHARACTERISTIC: BRAKING SYSTEM OK OR FAILURE OF CIRCUIT 2  
KENNLINIE: INTAKTE BREMSANLAGE BZW AUSFALL VON KREIS 2  
COURBE: DISPOSITIF DE FREINAGE INTACT OU DEFAILLANCE  
CARACTERISTIQUE: DE CIRCUIT 2  
CURVA: DISPOSITIVO DI FRENATURA INTATTO O DIFETTO  
CARATTERISTICA: DEL CIRCUITO 2  
pe11 max.=8.5 bar

\*\* CHARACTERISTIC: FAILURE OF CIRCUIT 1  
KENNLINIE: AUSFALL VON KREIS 1  
COURBE: DEFAILLANCE DU CIRCUIT 1  
CURVA: DIFETTO DEL CIRCUITO 1  
pe11 max=8.5 bar



SCHALLEMISSION SIEHE PRODUKTSPEZIFIKATION  
SOUND EMISSION SEE PRODUCT SPECIFICATION  
VOIR SPECIFICATION DU PRODUIT  
VEDERE SPECIFICA DI PRODOTTO

INSTALLATION POSITION: EXHAUST SHOWN AT BASE (AXIS CENTRE OF THE DEVICE  
DEVIATES MAX 90° FROM VERTICAL)  
ENTLUEFTUNG NACH UNTEN (MITTELACHSE DES GERAETES  
MAX 90 ° VON DER SENKRECHTEN ABWEICHEND)  
EINBAULAGE:  
POSITION D'INSTALLATION: ECHAPPEMENT VERS LE BAS (ECART DE L'AXE MEDIAN DE  
L'APPAREIL PAR RAPPORT A LA VERTICA  
POSIZIONE DI MONTAGGIO: SCARICO VERSO IL BASSO (DEVIAZIONE ASSE APPARECCHIO  
RISPETTO ALLA VERTICALE: MAX. 90°)

GENERAL SPECIFICATION: JED-034	
FURTHER TECHNICAL DATA:	
DOC. CODE:	SHEET: TO
GENERAL TOLERANCES	
CLASS 1)	RANGE OF NOMINAL DIMENSIONS ( ± mm)
FINE	≤ 50 > 50 > 180 > 180 > 400 > 400
MEDIUM	1,0 2,0 3,0 4,0 5,0 6,5 ± 3'
COARSE	2,0 3,5 5,0 6,5
TAPPED HOLES ACC: ISO 4037 / JED-162	
1) TOLERANCE CLASS APPLIED CROSSHATCHED	

CADIAN-DRAWING COPYRIGHT		<b>WABCO</b>	
DATE: 95-08-18	SIGNATURE: MEINIKING	TRAILER CONTROL VALVE ANHAENGER STEUERVENTIL VALVE DE COMMANDE DE REM. VALVOLA DI COMANDO FR.RI.	
CHECKED: 95-08-18	GROETZ.	PRODUCT IDENTIFICATION NO. <b>973 009 010 0</b>	DOC. CODE: 605
DATE: 95-08-18	DATE: 95-08-18	SCALE: 1:1	SHEET: 1/1
REV.:	DATE:	SHAPE CODE	REPLACEMENT FOR 973 009 010 0 OF A
DN-NR.	REV.	DATE:	EXP. CODE: [7]3[9]