

DURITE®

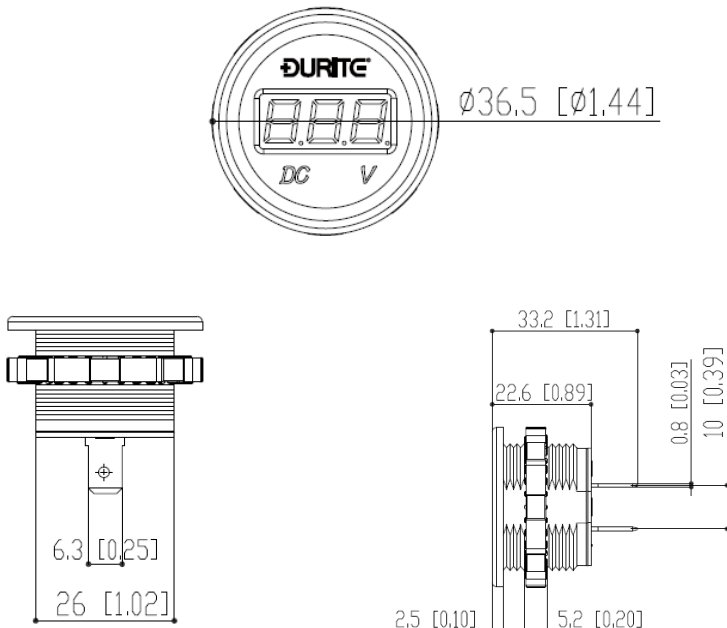
LCD Voltmeter 6-30VDC

Part 0-534-10

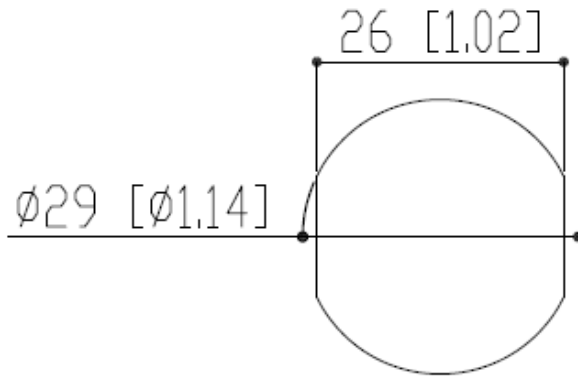
Fitting Instructions

1. Ensure that the Voltmeter voltage (6-30VDC) matches the vehicle or system voltage (including illumination).
2. Switch off ignition and remove key. Disconnect battery (earth terminal first).
Note: Before disconnecting battery make sure all system start up codes are known, i.e. coded radios etc.
3. Choose a suitable location for the gauge with adequate access to the rear of the gauge for connections and fixings.
4. Cut a 28 mm diameter hole at the chosen location for the gauge. Push the gauge into the hole and secure using the backnut. The panel maximum thickness must not exceed 6mm. Also compatible with Durite: 0-601-51 / 52 / 61 & 0-608-00.

Product Dimension Drawing



Installation Hole Dimensions



5. Connect the terminal marked "+" to a suitable ignition controlled fused supply or positive feed and connect the terminal marked "-" to earth or negative feed. When voltage is supplied to the gauge it will display the voltage detected.

6.. Check all connections are correct and secure. Reconnect battery (earth terminal last). Switch on ignition and check that the voltmeter registers battery voltage. Switch on panel lamps and check that the gauge illuminates.

DO NOT Connect the voltmeter in series with a load.

DO Ensure there is adequate space for access to the rear of the voltmeter. Fit fuses if none are present in the circuits being monitored. Remember voltmeters are connected in parallel with the circuit being monitored.