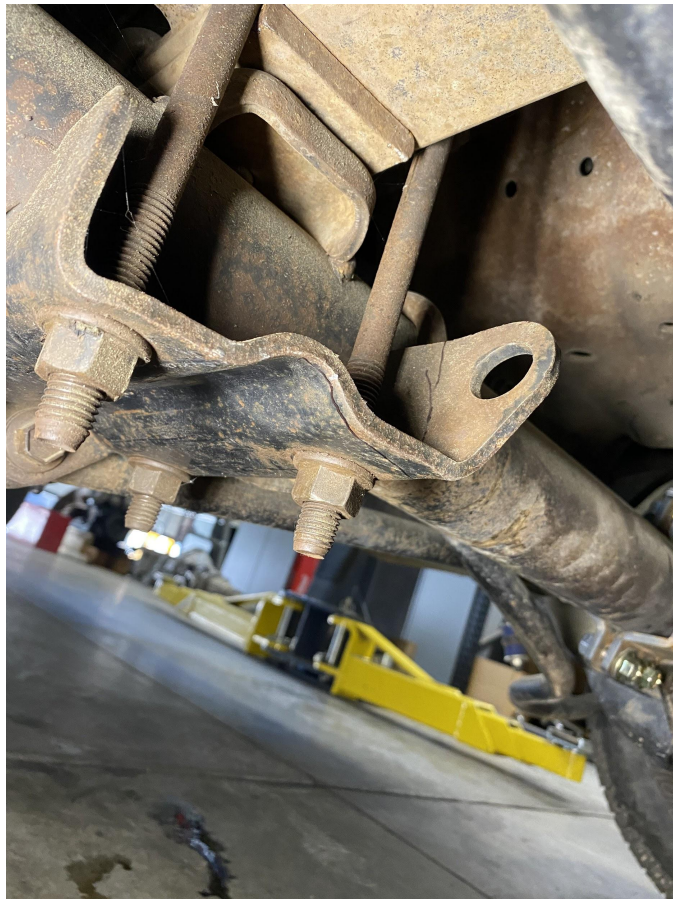


Carrick Customs

Fox ATS Steering Stabilizer Kit Install Instructions

*****Thoroughly read all of the instructions BEFORE beginning installation*****

1. Place the front axle of your truck on jack stands and remove the wheels and tires.
 - a. You should only need to remove the wheel and tire on the passenger side but it may be easier to remove both sides.
2. Trim the front portion of your passenger side u-bolt plate so that it is square with the axle tube. See pictures below



a.



- b.
- c. You want to take off as much material as you can without interfering with where the u-bolt nut seats on the plate. This is to ensure that there is enough clearance between the u-bolt plate and the reservoir on the stabilizer.
3. Bolt the bracket to axle housing so that the tabs point towards the drivers side of the axle and the bracket is all the way up against the differential housing.
 - a. Start with making these bolts a little loose so that you can adjust the bracket by rotating the bracket on the axle tube.
4. Now it's time to start installing the stabilizer itself. With the steering wheel straight, start by installing the shaft end on the bracket that is bolted to the front axle making sure that the adjuster screw is pointing forwards.
5. Install the other end of the stabilizer onto the tie rod placing the two aluminum shims between the stabilizer clamp and the tie rod.
6. Tighten the four allen head screws on the clamp so that it is snug but still able to adjust.
7. Adjust the side to side location of the steering stabilizer clamp on the tie rod so that there is $\frac{1}{4}$ " of shaft exposed on the stabilizer when the wheels are turned all the way to the left.

- a. Once this position is found, mark the tie rod on both sides of the stabilizer clamp.
8. Rotate the stabilizer and axle bracket so that the stabilizer does not interfere with anything through the entire range of travel.
 - a. Trucks that are still equipped with leaf springs will have the stabilizer positioned similar to the picture below:



- b. Trucks with our OBS D60 Coilover Kit will have the stabilizer positioned similar to the picture below:



9. Now that everything is positioned properly so that the wheels turn all the way in both directions without bottoming out the stabilizer and the stabilizer does not interfere with anything, it's time to torque everything.
 - a. Torque the allen screws on the tie rod clamp to 12 lb-ft.
 - b. Torque the bolts on the axle bracket and bolt on the eyelet end of the stabilizer to 60 lb-ft.
10. Re-install your wheels and tires and torque them to spec.
11. Adjusting the stiffness of the stabilizer:
 - a. The adjuster is on the eyelet end of the stabilizer and should be facing the front of the truck.
 - b. There are 24 adjustment settings. Turning the adjuster clockwise makes the stabilizer stiffer and turning the adjuster counter clockwise makes the stabilizer softer.
 - c. We recommend starting with the adjuster in the softest setting and gradually increasing it until you get your desired steering feel.

CARRICK CUSTOMS IS NOT RESPONSIBLE IMPROPER INSTALLATION OR ANY DAMAGE SECONDARY TO IMPROPER INSTALLATION