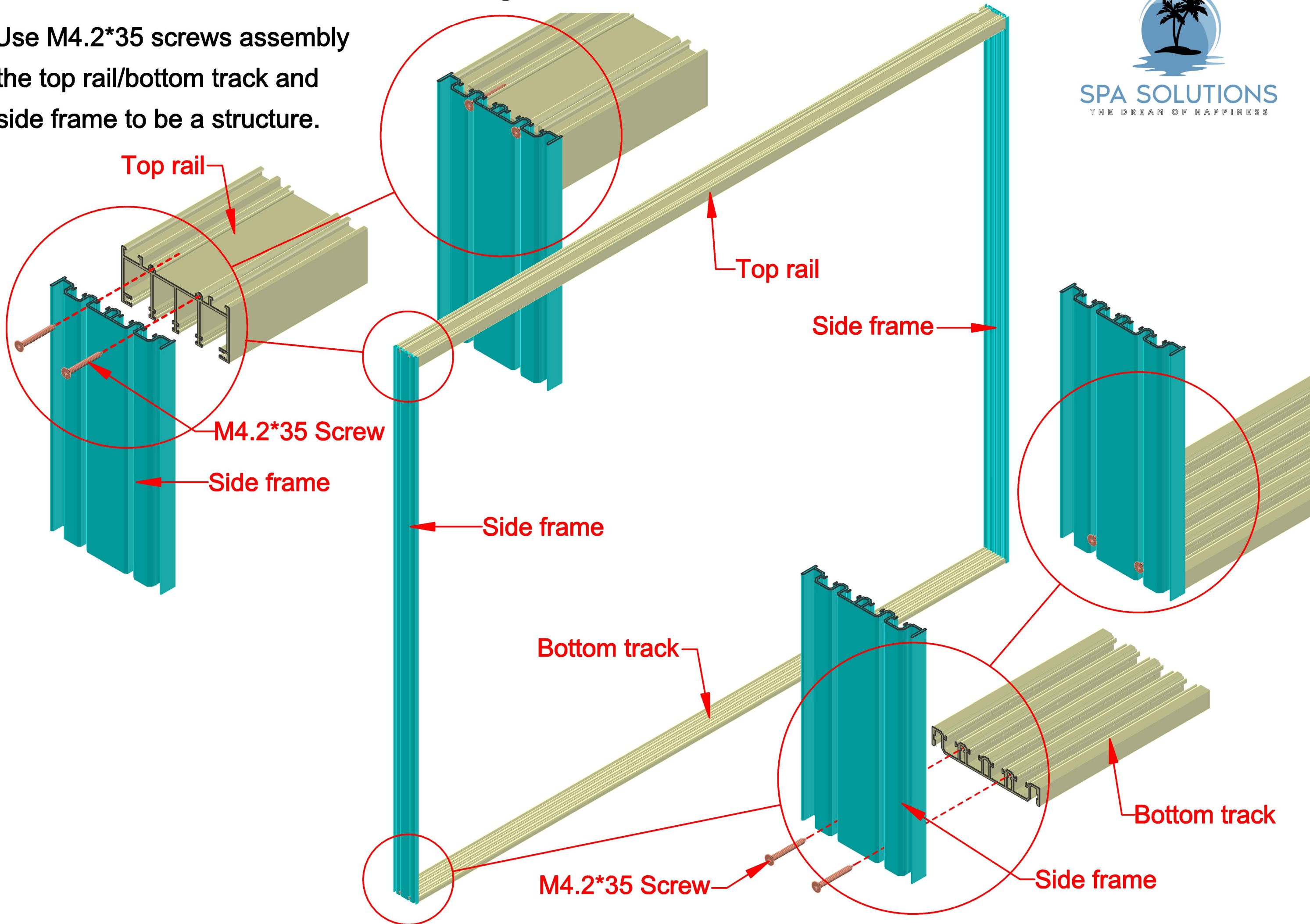
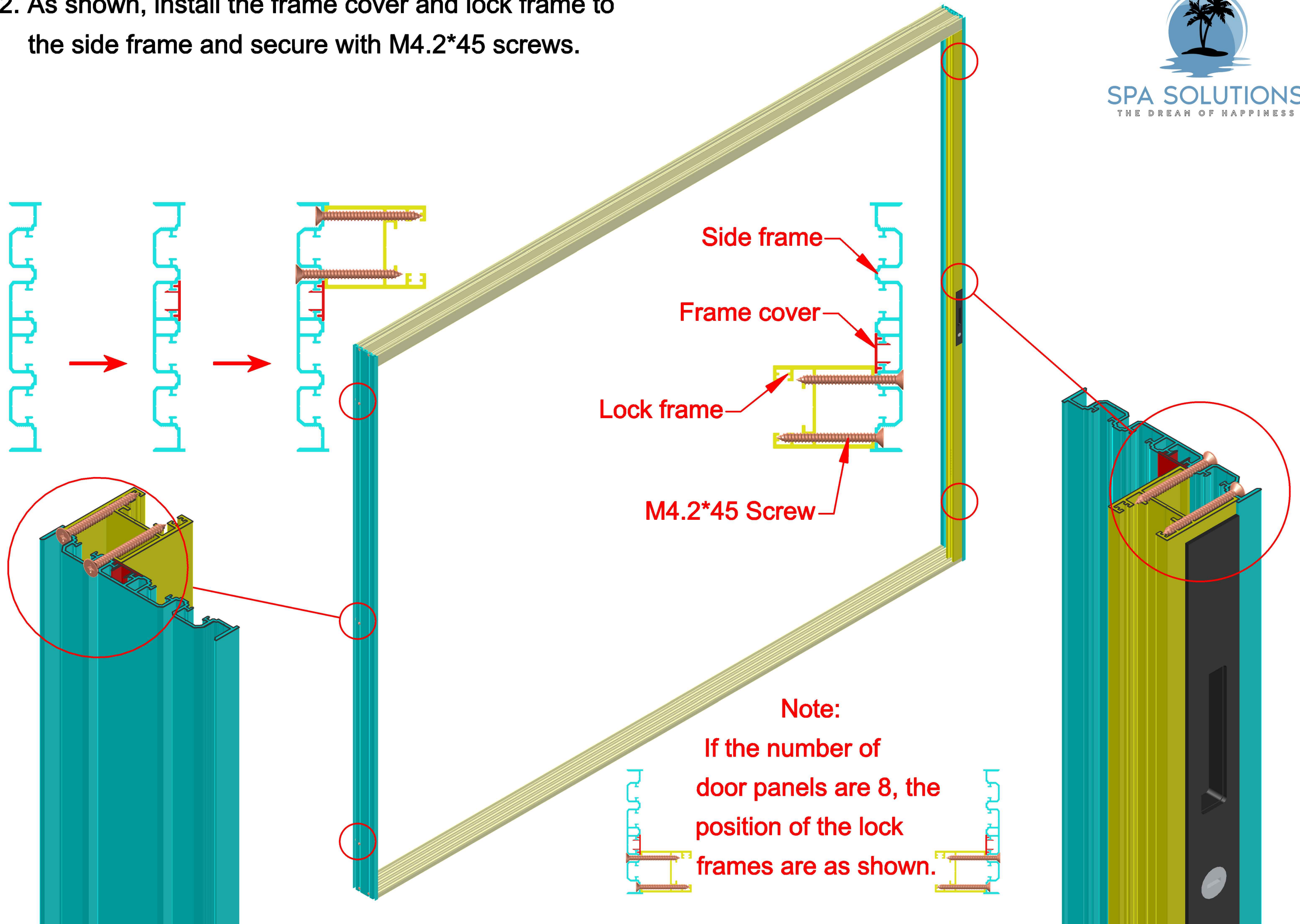


Frameless Sliding Glass Door Installation Manual

1. Use M4.2*35 screws assembly the top rail/bottom track and side frame to be a structure.



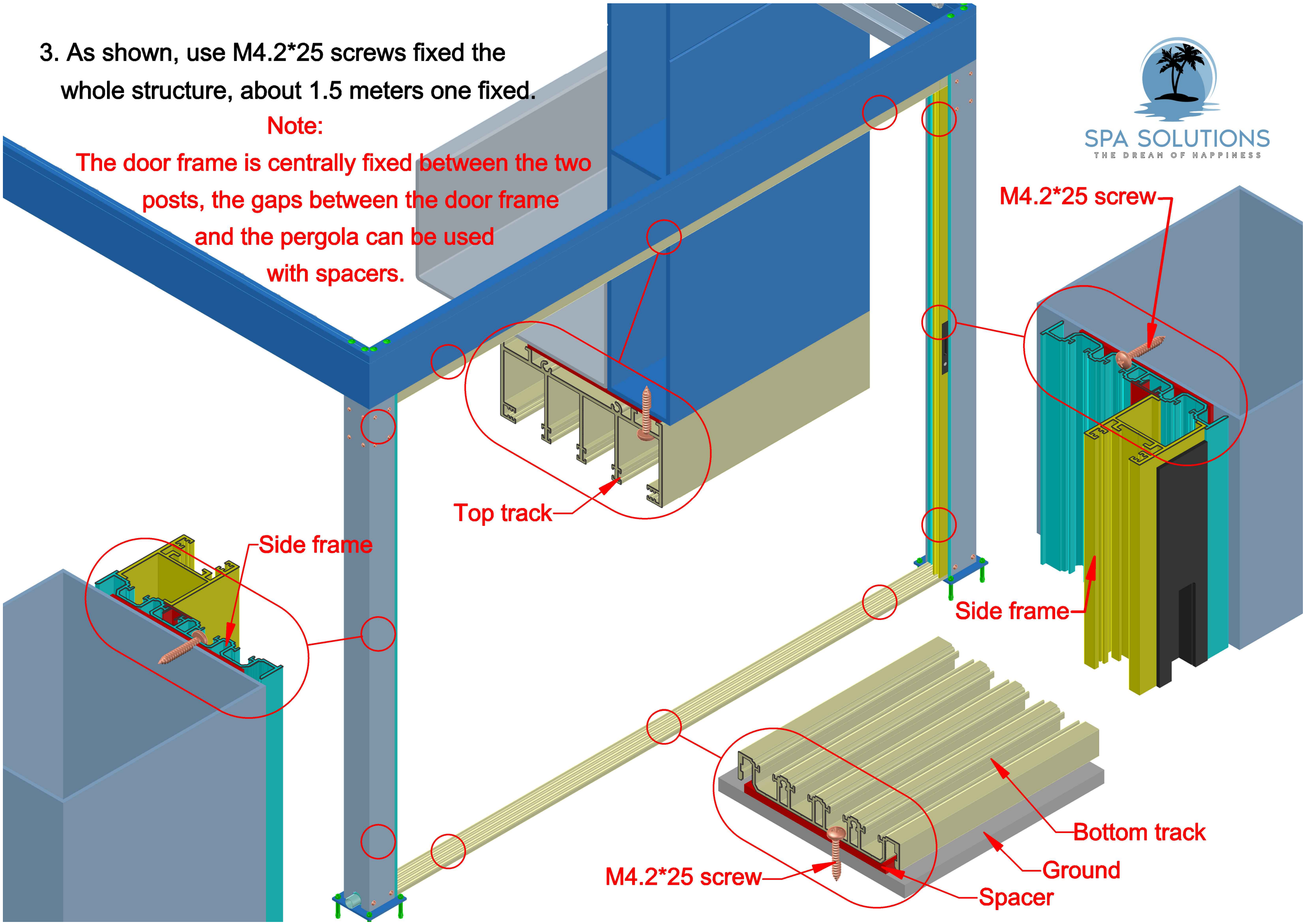
2. As shown, install the frame cover and lock frame to the side frame and secure with M4.2*45 screws.



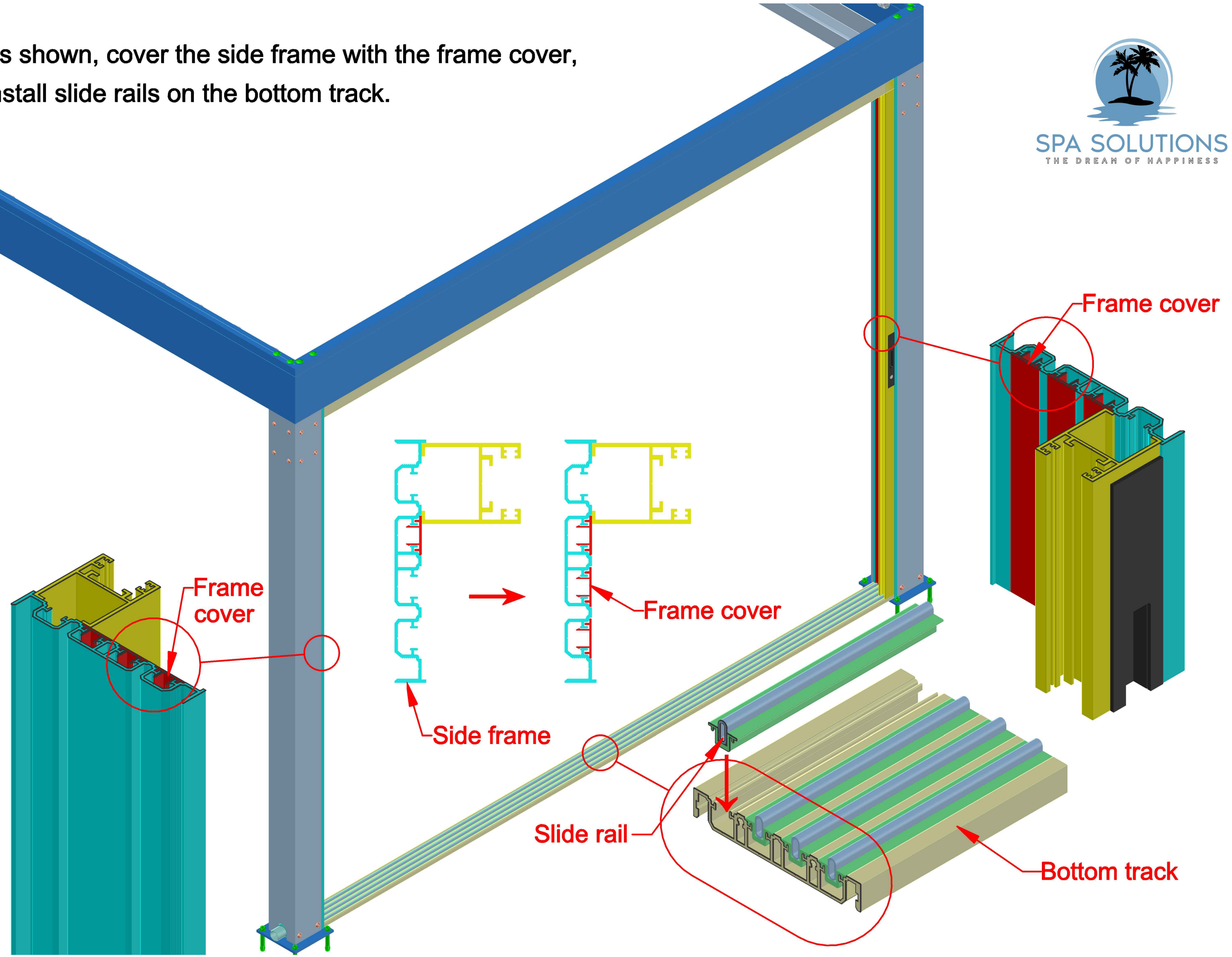
3. As shown, use M4.2*25 screws fixed the whole structure, about 1.5 meters one fixed.

Note:

The door frame is centrally fixed between the two posts, the gaps between the door frame and the pergola can be used with spacers.

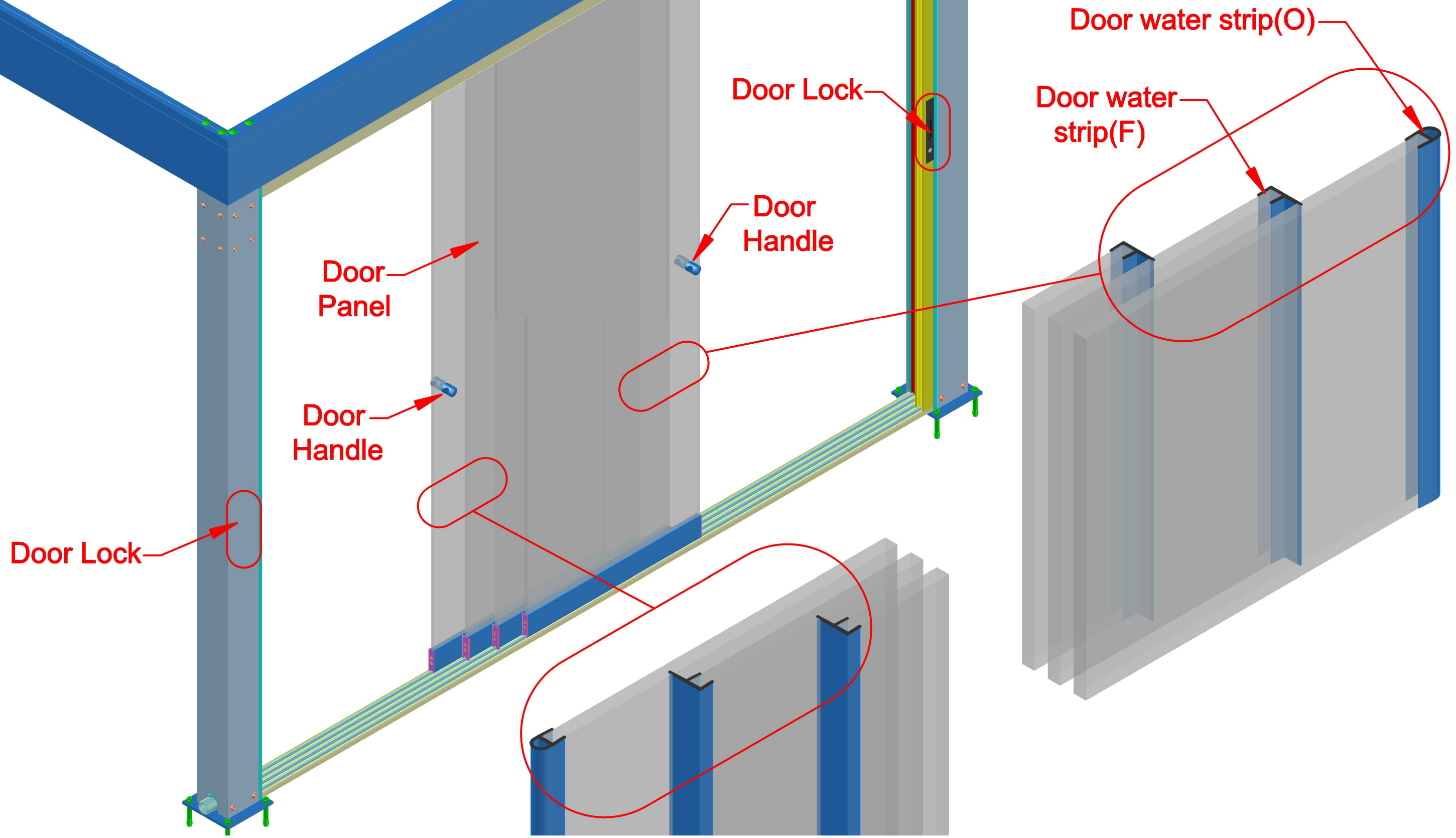


4. As shown, cover the side frame with the frame cover, install slide rails on the bottom track.



5. Install the door panels into the door frame, and install the door handles.

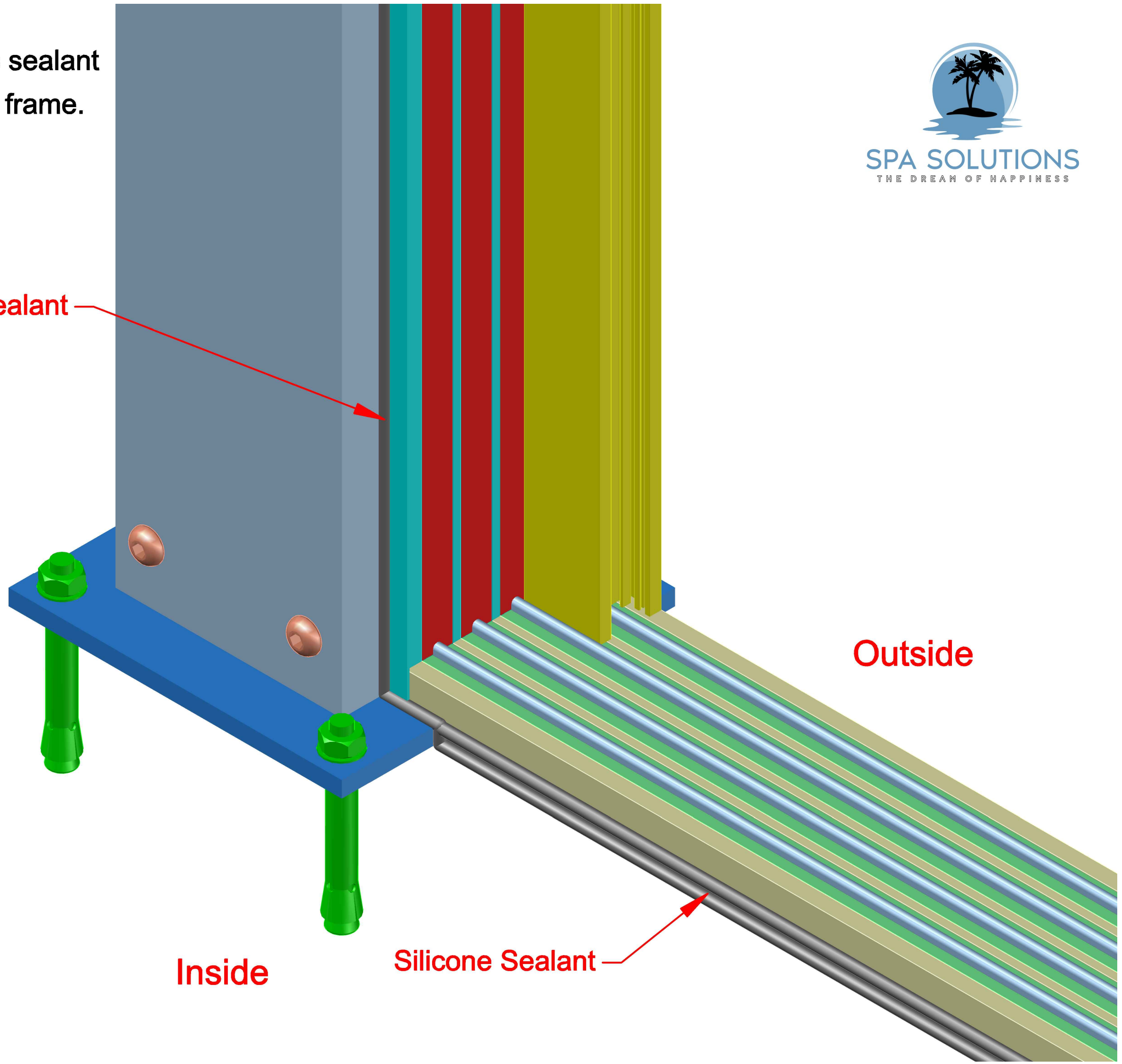
6. As shown, put the door water strip(O) and door water strip(F) to the frameless sliding door panel.



7. As shown, apply silicone sealant on the inside of the door frame.



Silicone Sealant



Outside

Inside

Silicone Sealant