

# le lounge

FICHE COMMANDE

PURCHASE ORDER



SOFAREV

LE CONFORT AUTREMENT

NOM DU MAGASIN

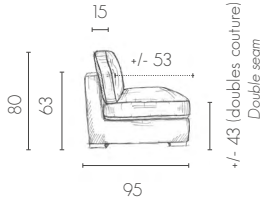
NAME OF THE SHOP

CONTRE-MARQUE

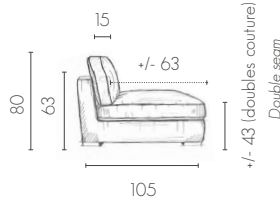
COUNTER MARK

1 - PROFONDEUR

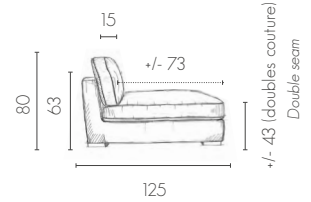
TAILLE S SIZE S



TAILLE L SIZE L



TAILLE XL SIZE XL



Couture plate impossible pour les tissus Galliano, Vamos, Baroso, Velours rayé 863 (sauf structure toujours en couture plate) / Seam plate not possible for Galliano, Vamos, Baroso, Striped Velvet 863 fabrics (except structure always in seam plate)

2 - CHAUFFEUSE ET MODULE D'ANGLE



SIMPLE

S/L/XL  
60 CM x .....  
90 CM x .....



DOUBLE (FIXE)

S/L XL  
120 CM x .....  
140 CM x .....  
160 CM x .....  
180 CM x .....  
200 CM x .....  
220 CM x .....  
240 CM x .....



DOUBLE (CONVERTIBLE)\*\* +  
ACCOUDOIRS OBLIGATOIRES  
DOUBLE (CONVERTIBLE)\*\* + MANDATORY ARMRESTS



LONGUE

L  
170 CM (LIT (BED) 140 CM) x .....  
190 CM (LIT (BED) 160 CM) x .....  
OPTION MATELAS CONFORT + (35 KG/HR)  
COMFORT + MATTRESS OPTION (35 KG / HR)

S/L/XL  
80 X 160 CM x .....  
80 X 180 CM x .....  
100 X 180 CM x .....



LONG COUSSINS PLACÉS  
LONG PLACED CUSHIONS

(UNIQUEMENT MONO ASSISE /  
ONLY SINGLE SEAT)



LONG MONO DOSSIER  
LONG SINGLE BACKREST

(UNIQUEMENT MONO ASSISE /  
ONLY SINGLE SEAT)

95 X 180 CM (S) x .....  
105 X 180 CM (L) x .....



SIMPLE

95 X 95 CM (S) x .....  
105 X 105 CM (L) x .....

TISSU STRUCTURE  
+ ACCOUDOIRS  
FABRIC STRUCTURE  
+ ARMRESTS

COUTURES

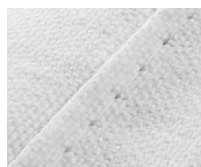


PLATE / FLAT SEAM

A compléter uniquement si le pouf est différent de la composition  
To be completed only if the pouf is different from the composition

+/- 43 (double couture)  
Double seam



50 X 50 CM x .....  
80 X 80 CM x .....  
70 X 92 CM (S)\* x .....  
92 X 92 CM (S)\* x .....  
70 X 102 CM (L)\* x .....  
92 X 102 CM (L)\* x .....  
102 X 102 CM (L)\* x .....

TISSU STRUCTURE  
FABRIC STRUCTURE

COUTURES

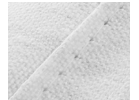


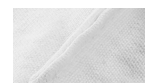
PLATE / FLAT SEAM

TISSU ASSISE  
FABRIC SEAT

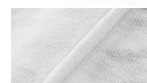
+/- 17



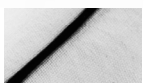
PLATE -  
FLAT SEAM



ECRASÉE  
CRUSHED SEAM



PASSEPOIL  
PIPING SEAM



LISÉRÉ (OPTION)\*\*  
EDGING SEAM

TISSU COUTURE  
FABRIC SEAMS

ASSISE REVERSIBLE IMPOSSIBLE / REVERSIBLE SEAT NOT POSSIBLE

\* Voir conditions en haut de page / See conditions at the top of the page

# le lounge

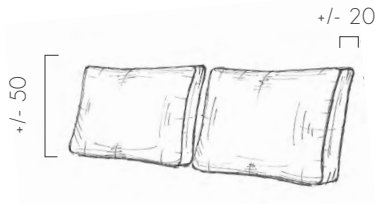


2

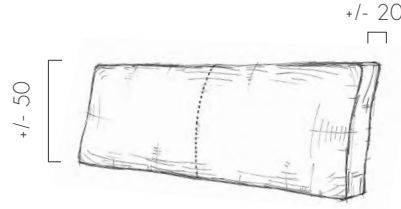
## SOFAREV

LE CONFORT AUTREMENT

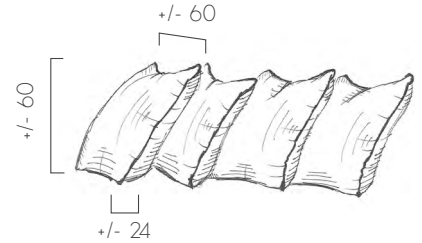
### FINITION DOUBLE COUTURE



PLACÉS / CUSHIONS PLACED



MONO\* (OPTION) / MONO BACKREST



MULTI (OPTION)  
- SIMPLE COUTURE

MULTI CUSHIONS - SINGLE STITCHING

### TISSU (MONO OU PLACÉS)

FABRIC (MONO OR PLACED)

### TISSU MULTI / FACE A :

FABRIC (MULTI) FACE A

/ FACE B :

FABRIC (MULTI) FACE B



PLATE / FLAT SEAM •

• Voir conditions en page 1  
/ See conditions on page 1



ECRASÉE / CRUSHED SEAM



PASSEPOIL / PIPING SEAM

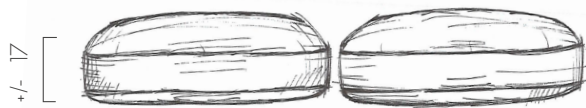
TISSU COUTURE FABRIC SEAM

3 - DOSSIER

Double Face tissu (inclus)

4 - ASSISE

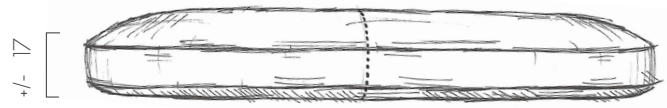
Assise réversible en option  
(seulement canapé fixe)



MULTI

CONFORT MOELLEUX (STANDARD) - 35 KG/HR

SOFT COMFORT (STANDARD) - 35 KG / HR



MONO\* (OPTION)

CONFORT MEDIUM (+ FERME) - 40 KG/HR (OPTION)\*\*

COMFORT MEDIUM (+ FIRM) - 40 KG / HR (OPTION) \*\*

### TISSU (MULTI OU MONO)

FABRIC (MULTI OR MONO)

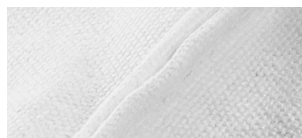
### ASSISE REVERSIBLE (OPTION - NON DISPONIBLE SUR CONVERTIBLE)

SEAT REVERSIBLE (OPTION - NO AVAILABLE ON CONVERTIBLE)

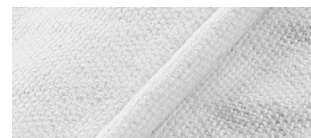


PLATE / FLAT SEAM •

• Voir conditions en page 1  
/ See conditions on page 1



ECRASÉE / CRUSHED SEAM



PASSEPOIL / PIPING SEAM

TISSU COUTURE FABRIC SEAM

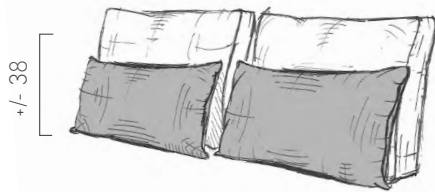


## SOFAREV

LE CONFORT AUTREMENT

### PLACÉS CUSHIONS PLACED

Epaisseur : +/- 16  
Thickness



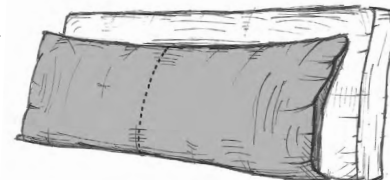
### DOUBLE COUSSINAGE (PLACÉS) SIMPLE COUTURE

DOUBLE CUSHIONING THICKNESS (PLACED) SIMPLE STITCHING

chauffeuse simple 60 = 1 coussin : L55 x H43 x P16	x .....
chauffeuse simple 90 = 1 coussin : L85 x H43 x P16	x .....
chauffeuse double 120 cm = 2 coussins : L55 x H43 x P16	x .....
chauffeuse double 140 cm = 2 coussins : L65 x H43 x P16	x .....
chauffeuse double 160 cm = 2 coussins : L75 x H43 x P16	x .....
chauffeuse double 170 cm = 2 coussins : L80 x H43 x P16	x .....
chauffeuse double 180 cm = 2 coussins : L85 x H43 x P16	x .....
chauffeuse double 190 cm = 2 coussins : L90 x H43 x P16	x .....
chauffeuse double 200 cm = 2 coussins : L95 x H43 x P16	x .....
chauffeuse double 220 cm = 2 coussins : L105 x H43 x P16	x .....
chauffeuse double 240 cm = 2 coussins : L115 x H43 x P16	x .....
chauffeuse Longue 80 x 160 cm = 1 coussin : L75 x H43 x P16	x .....
chauffeuse Longue 80 x 180 cm = 1 coussin : L75 x H43 x P16	x .....
chauffeuse Longue 100 x 180 cm = 1 coussin : L95 x H43 x P16	x .....
Angle simple 95 x 95 cm = 1 coussin : L55 x H43 x P16	x .....
et 1 coussin : L65 x H43 x P16	x .....
Angle simple 105 x 105 cm = 1 coussin : L65 x H43 x P16	x .....
et 1 coussin : L75 x H43 x P16	x .....
Angle long 95 x 180 cm = 1 coussin L55 x H43 x P16	x .....
et 2 coussins L75 xH 43 x P16	x .....
Angle long 105 x 180 cm = 1 coussin L65 x H43 x P16 et 2	x .....
coussins L75 xH 43 x P16	x .....

### MONO SINGLE CUSHION

+/- 38



Epaisseur : +/- 16  
Thickness

### DOUBLE COUSSINAGE\* (MONO) SIMPLE COUTURE

DOUBLE CUSHIONING \* (MONO) SIMPLE STITCHING

chauffeuse double 120 cm = 1 coussin : L115 x H43 x P16	x .....
chauffeuse double 140 cm = 1 coussin : L135 x H43 x P16	x .....
chauffeuse double 160 cm = 1 coussin : L155 x H43 x P16	x .....
chauffeuse double 170 cm = 1 coussin : L160 x H43 x P16	x .....
chauffeuse double 180 cm = 1 coussin : L175 x H43 x P16	x .....
chauffeuse double 190 cm = 1 coussin : L180 x H43 x P16	x .....
chauffeuse double 190cm = 1 coussin : L185 x H43 x P16	x .....
chauffeuse double 200 cm = 1 coussin : L195 x H43 x P16	x .....
chauffeuse double 220 cm = 1 coussin : L215 x H43 x P16	x .....
chauffeuse double 240 cm = 1 coussin : L235 x H43 x P16	x .....
chauffeuse Longue 80 x 160 cm = 1 coussin : L75 x H43 x P16	x .....
chauffeuse Longue 80 x 180 cm = 1 coussin : L75 x H43 x P16	x .....
chauffeuse Longue 100 x 180 cm = 1 coussin : L95 x H43 x P16	x .....
Angle long 95 x 180 cm = 1 coussin L55 x H43 x P16 et	x .....
1 coussin L155 xH 43 x P16	x .....
Angle long 105 x 180 cm = 1 coussin L65 x H43 x P16 et	x .....
1 coussin L155 xH 43 x P16	x .....

5 - DOUBLE COUSSINAGE (OPTION)

TISSU .....  
FABRIC

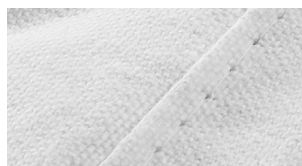
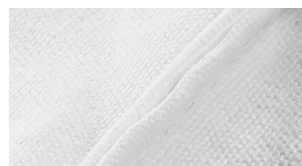
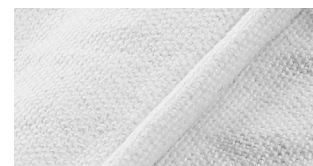


PLATE / FLAT SEAM •

• Voir conditions en page 1  
/ See conditions on page 1



ECRASÉE / CRUSHED SEAM



PASSEPOIL / PIPING SEAM

TISSU COUTURE FABRIC SEAM

# le lounge



4

## SOFAREV

LE CONFORT AUTREMENT

### ACCOUDOIRS BAS\*

#### LOW ARMRESTS

49

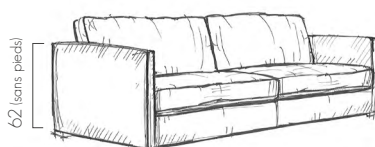


5 CM DOUBLE COUTURE x .....

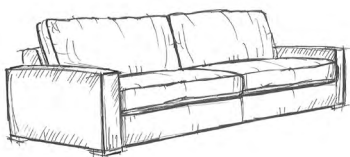
### ACCOUDOIRS HAUTS\*

#### UP ARMRESTS

62



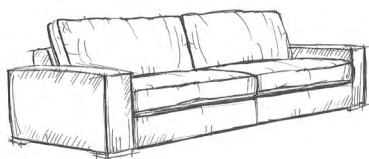
5 CM DOUBLE COUTURE x .....



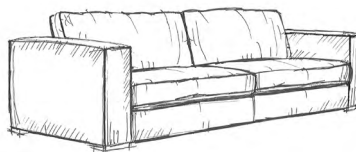
10 CM DOUBLE COUTURE X .....



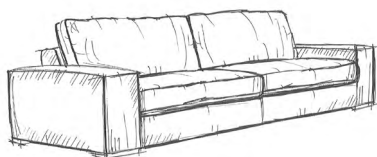
10 CM DOUBLE COUTURE x .....



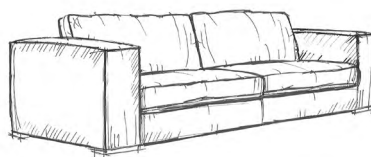
18 CM DOUBLE COUTURE x .....



18 CM DOUBLE COUTURE x .....



27 CM DOUBLE COUTURE x .....



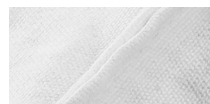
27 CM DOUBLE COUTURE x .....

25 CM ROND DOUBLE COUTURE x .....



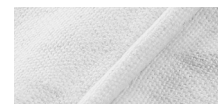
PLATE FLAT SEAM •

• Voir conditions en page 1  
/ See conditions on page 1



ECRASÉE

CRUSHED SEAM



PASSEPOIL

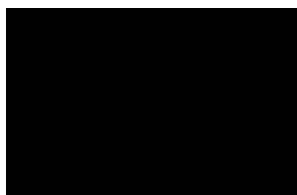
PIPING SEAM

TISSU COUTURE .....

6 - PIEDS



NATUREL 3 CM 5 CM



NOIR 3 CM 5 CM



WENGUÉ 3 CM 5 CM

Dimensions en cm (Tolérance de fabrication +/- 3,5%) - Visuels non contractuels - Conception sur-mesure sous conditions de faisabilité technique après accord du bureau d'études et acceptation du devis. \* / \*\* / \*\*\* Se référer au catalogue. / Dimensions in cm (Manufacturing tolerance +/- 3.5%) - Non-contractual visuals - Customized design under technical feasibility conditions after agreement from the design office and acceptance of the quote. \* / \*\* / \*\*\* Please Refer to the catalog.



## S O F A R E V

LE CONFORT AUTREMENT

### Coussins déco / Decorative pillows (option)

40 x 40 x ..... tissu : .....	couture plate •	couture écrasée	couture passe-poil / tissu : .....
(fabric)	(flat seam)	(crushed seam)	(piping seam / fabric)
50 x 50 x ..... tissu : .....	couture plate •	couture écrasée	couture passe-poil / tissu : .....
(fabric)	(flat seam)	(crushed seam)	(piping seam / fabric)
60 x 60 x ..... tissu : .....	couture plate •	couture écrasée	couture passe-poil / tissu : .....
(fabric)	(flat seam)	(crushed seam)	(piping seam / fabric)
30 x 50 x ..... tissu : .....	couture plate •	couture écrasée	couture passe-poil / tissu : .....
(fabric)	(flat seam)	(crushed seam)	(piping seam / fabric)

• Voir conditions en page 1 / See conditions on page 1

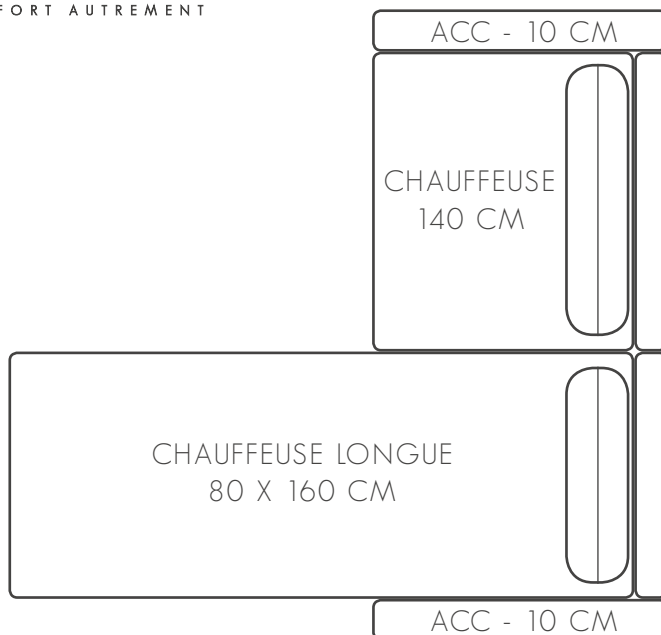
# le lounge



SOFAREV  
LE CONFORT AUTREMENT



CANAPÉ / SOFA



ANGLE

## → Dessinez votre Lounge / Draw your Lounge

Imprimez cette feuille et dessinez-nous simplement la configuration voulue :  
Print this sheet and simply draw us the desired configuration:

\* il n'est pas obligatoire de dessiner les coussins  
\* it is not mandatory to draw the cushions

