

PROFORMX™

LED LIGHT KIT

INSTALLATION INSTRUCTIONS

Fits Yamaha® Drive® G29 Only

PART# 55-304



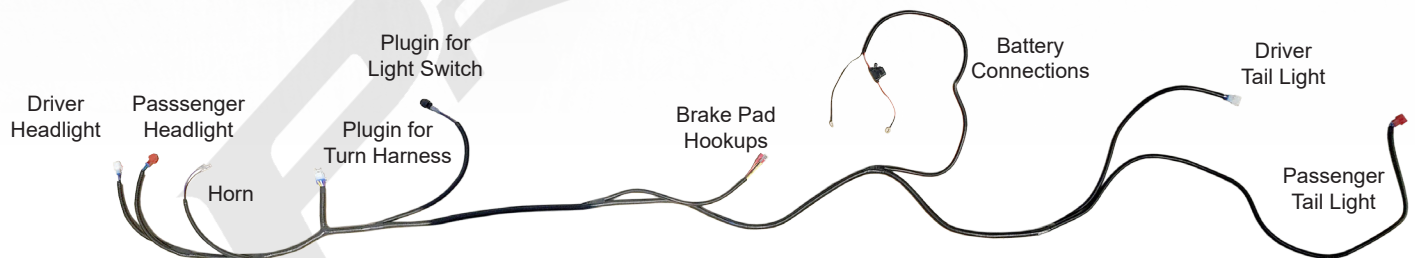
Headlights



Tail Lights



Light Switch



TOOLS NEEDED

- #2 Phillips Tip
- 3mm Allen wrench
- 15/32" Drill Bit
- Rotary Cutting Tool
- Wire Snake
- Cordless Drill

PARTS LIST

- Headlights
- Tail Lights
- Light Switch
- Light Kit Harness (upgrade ready)
- Mounting Screws
- Zip Ties

If installing an upgrade kit follow those instructions along with these instructions to avoid repeating steps.

STEP 1

Switch key to the OFF position and engage the Parking brake.

Place TOW/RUN switch to TOW.



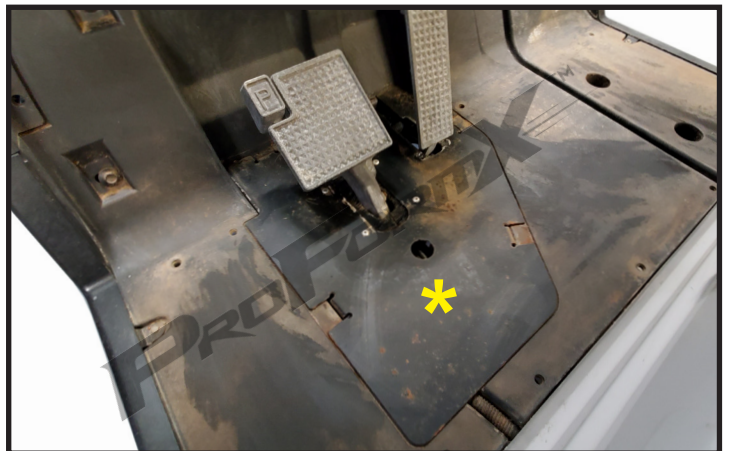
STEP 2

Remove the floor mat to access the pedal assembly by taking out all of the plastic push rivets.



STEP 3

Temporarily remove the pedal assembly cover.



STEP 4

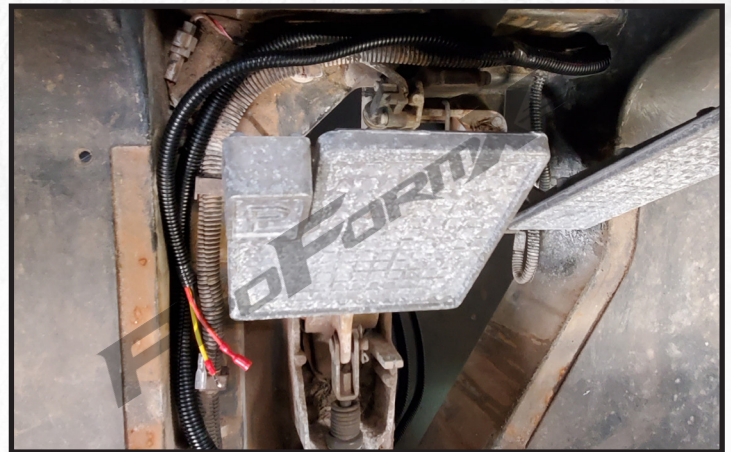
Pull the rear half of the Light Kit Harness through the front access hole and into the pedal assembly as shown.



STEP 5

Continue to pull the Light Kit harness around the pedals and out through the back of the pedal access.

Leave the Brake Pad connectors even with the Brake Pedal as shown.



STEP 6

Following the instructions on your headlight template, cut out and place the template on your cart as shown.

Trace out headlight with a marker.

Flip over template for passenger side and repeat.



STEP 7

Using a rotary cutting tool, cut out the marked headlight holes and clean the rough edges with sandpaper.

CAUTION: Cut to the inside of your marked line. You can trim more plastic off if needed.



STEP 8

Repeat Step 7 on the Passenger side.

Then route the front half of your harness up to the front cowl and feed the Headlight connections to the cut outs.

*** Red 3 Pin connectors go to the Passenger side.**



STEP 9

Plug in the Headlights to the 3 pin connectors of the Light Kit Harness. Secure headlights to cowl using the supplied screws and a #2 Phillip's Tip.

Red Connector is for the Passenger side



STEP 10

Following the instructions on your tail light template, cut out and place the template on your cart as shown.

Trace out tail light with a marker.

Flip over template for driver side cutout and repeat.



STEP 11

Using a rotary cutting tool, cut out the marked headlight holes and clean the rough edges with sandpaper.

CAUTION: Cut to the inside of your marked line. You can trim more plastic off if needed.

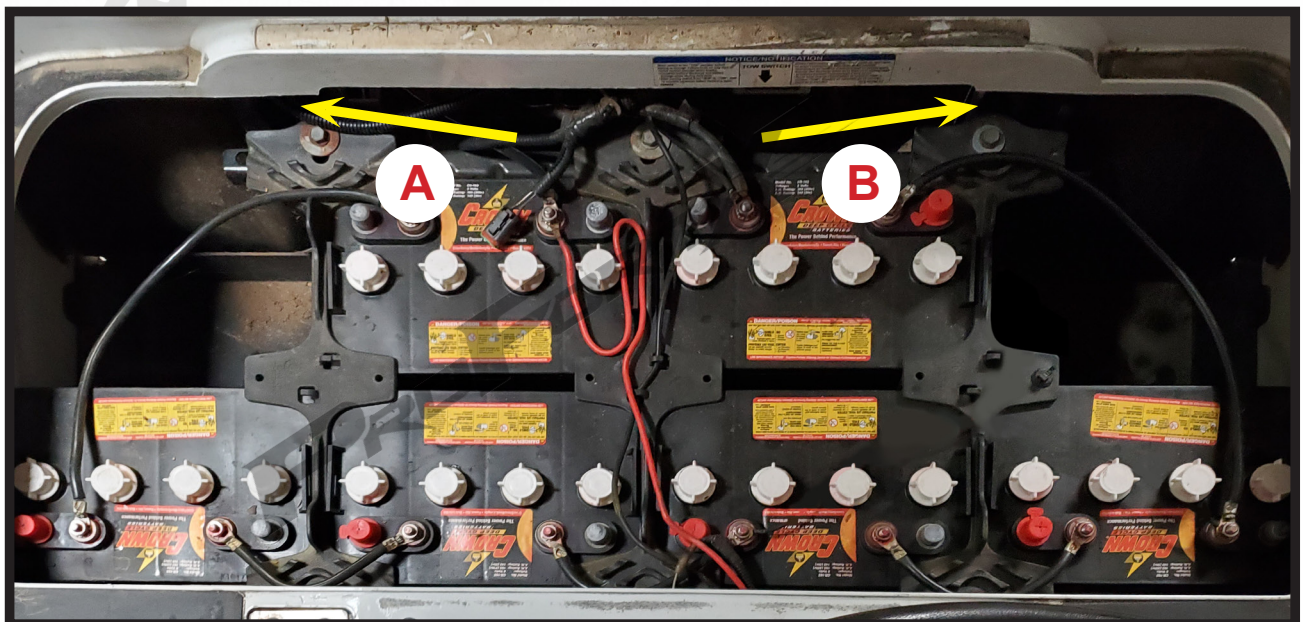


STEP 12

Route the Tail Light plugs and battery connections into the rear of the battery compartment.

A) Route the Passenger side red connector behind the battery pack and to the rear Tail Light.

B) Feed the white Driver's side connector over the Driver's rear fender to the rear Tail Light.



STEP 13

Plug In tail lights to harness. Attach Tail Lights to the rear body using the supplied screws and a #2 Phillips tip.



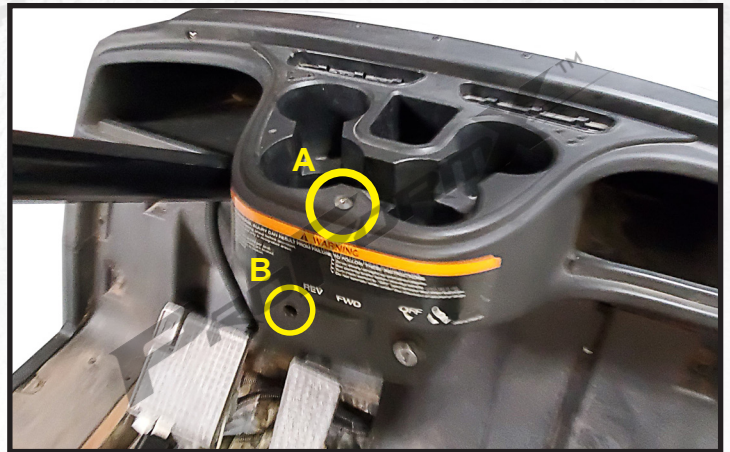
STEP 14

A) Use a 3mm Allen wrench to temporarily remove the cup holder insert.

B) Using a 15/32" drill bit, drill out a hole for your switch just to the left of the Forward/Reverse switch.

Take light switch section of harness and route up into back side of drink holder cavity.

***Note:** On gas carts use same location.



STEP 15

Remove nut on back of switch.

Insert switch into dash panel hole and secure in place using nut.

Attach light kit harness wires using the example on the right to light switch.

Reattach dash using hardware from Step 14.



STEP 16

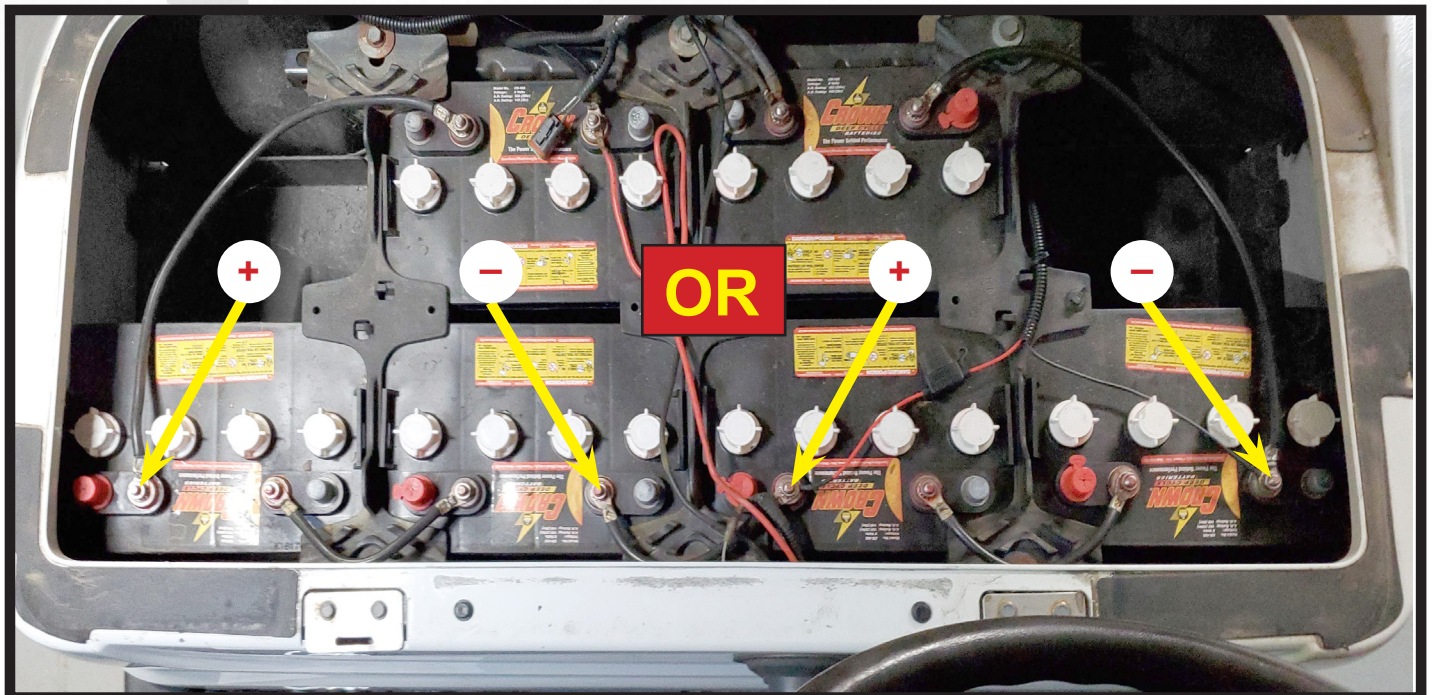
BATTERY CONNECTIONS

For 12V Batteries Packs or Gas Carts

- Attach the Harness ring terminals to 12 volts with the red (+) wire going to the positive post and the black (-) wire going to the negative post of any single battery.

For 8V Batteries (picture shown below)

- Attach the Harness ring terminals to either pair of batteries shown.
- A 16-12V reducer is recommended but not required.





ProFormX

Club Car®, Precedent®, and DS® are registered trademarks of Ingersoll Rand, Inc. E-Z-GO®, TXT®, and RXV® are registered trademarks of Textron Innovations, Inc. ("Textron"). Yamaha®, G-14®, G-19®, G-22®, G-29®, and Drive2® are registered trademarks of Yamaha Golf-Car Company and Yamaha Motor Corporation ("Yamaha"). Reference to Club Car®, E-Z-GO®, or Yamaha® or their associated trademarks and products is only for purposes of identifying golf carts with which this ProFormX™ product is compatible. ProFormX™ products are aftermarket parts and are not original equipment parts. ProFormX™ is not connected or affiliated with or sponsored by Club Car®, E-Z-GO®, or Yamaha® or endorsed by Ingersoll Rand Inc®, Textron Innovation Inc®, or Yamaha Golf Cart Company®.

MYPROFORMX.COM