



DECKHAND™ OWNER'S MANUAL 2016

WWW.RADPOWERBIKES.COM

We are here to help! Please contact us at SUPPORT@RADPOWERBIKES.COM or 1-800-939-0310 if you have questions.

Welcome

Thanks you for purchasing the DeckHand™ from Rad Power Bikes™. We take pride in bringing you a quality product that will offer years of enjoyment.

Using This Manual

This manual contains details of the product, its equipment, and information on its operation and maintenance. Read it carefully and familiarize yourself with the DeckHand before using it in order to ensure a safe use and prevent tragic accidents. Be sure to retain this manual as your convenient DeckHand information source.

This Manual contains Warnings and Cautions concerning the safe operation and consequences if safe setup, operation and maintenance are not performed. All information in this manual should be carefully reviewed and if you have any questions you should contact Rad Power Bikes immediately. The notes, warnings and cautions contained within the manual and marked by this triangular Caution Symbol should also be given special care. Users should also pay special attention to information marked in this manual beginning with **NOTICE**.



Because it is impossible to anticipate every situation or condition which can occur while riding, this manual makes no representations about the safe use of bicycles under all conditions. There are risks associated with the use of any bicycle which cannot be predicted or avoided, and which are the sole responsibility of the rider. You should save this manual, along with any other documents that were included with your bicycle, for future reference, however all content in this manual is subject to change or withdrawal without notice. Visit www.radpowerbikes.com to download the latest version. Rad Power Bikes makes every effort to ensure accuracy of its documentation and assumes no responsibility of liability if any errors or inaccuracies appear within. Assembly and first adjustment of your Rad Power Bike requires special tools and skills and it is recommended that this should be done by a trained bicycle mechanic if possible.



Table of Contents

Welcome	2
Using This Manual.....	2
Assembly Instructions.....	4
Link to Assembly Video and Online Resources.....	6
Limited Warranty	6



Assembly Instructions

NOTICE: The following assembly steps are only a general guide to assist in the assembly of your DeckHand and is not a complete or comprehensive manual of all aspects of assembly, maintenance and repair. We recommend you consult a bicycle repair specialist to assist in the assembly, repair and maintenance of your bicycle and all accessories.

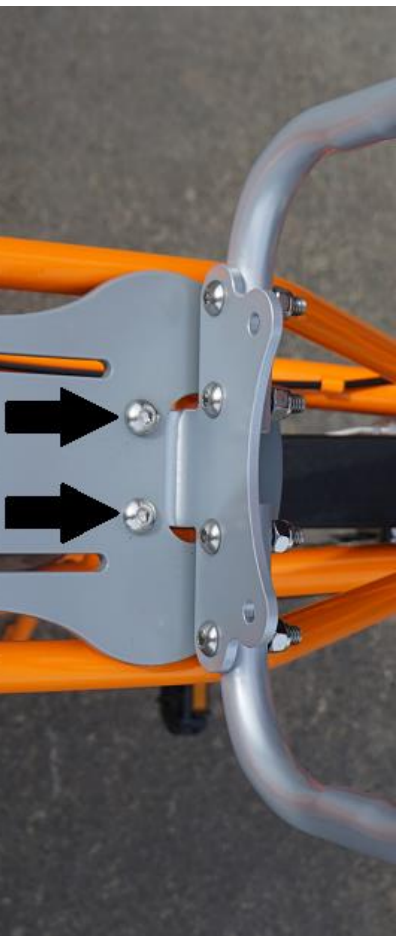
Required Tools:

- **3/16" Allen Wrench**
- **1/2" Wrench**

Step 1: Ensure the RadWagon Aluminum Accessory deck is correctly installed prior to installation of the DeckHand. The Accessory Deck is required for installation and sold separately.



Step 2: Once the DeckHand is removed from packaging, you can install as shown by rotating the mounting bracket into the large oval cutout in the accessory deck. Once inserted and the tab is beneath the deck, secure the bracket to the accessory deck using the provided hardware. Secure to 14 NM using a 3/16" allen wrench and 1/2" wrench.



Step 3: Securely fasten all 4 bolts attaching the DeckHand tube to the bracket. Tighten to 14NM using 3/16" Allen wrench and 1/2" wrench as shown.



Do not overtighten. Hardware should securely fasten the tubular handle to the bracket but be careful to not overtighten as damage can occur





Closely inspect all components and hardware for proper tightness before each ride. If you identify any loose hardware, tighten before use, or contact Rad Power Bikes for assistance.

[Link to Assembly Video and Online Resources](#)
[Assembly Video](#)

Please visit the Rad Power Bikes YouTube Channel to view instructional videos. <https://www.youtube.com/user/mikebikerad>

[Online Resources](#)

Please visit the Rad Power Bikes website at <http://www.radpowerbikes.com/> for more information or to contact us.

Limited Warranty WARRANTY INFO

Every DeckHand is covered under our manufacturer's one year all-inclusive warranty for the original owner against all manufacturing defects. Rad Power Bikes warrants this product, including all individual components against defects in material or workmanship as follows:

RAD POWER BIKES LIMITED 1 YEAR WARRANTY

Rad Power Bikes' bicycle components including frame, forks, stem, handlebar, headset, seat post, saddle, brakes, lights, bottom bracket, crank set, pedals, rims, spokes, wheel hub, freewheel, cassette, derailleur, shifter, motor, throttle, controller, wiring harness, LCD display, kickstand, reflectors, accessories and hardware are warranted to be free from manufacture defects in materials and/or workmanship for a 1 year period from the date of original purchase.

Wear and tear is not covered under warranty.



TERMS OF WARRANTY

This warranty only applies to the original owner. This warranty does not apply to rental or commercial use bicycles. This warranty is expressly limited to the replacement of defective parts at the sole discretion of Rad Power Bikes. This warranty does not cover any damage or defects resulting from failure to follow instructions in the owner's manual, acts of God, accident, misuse, neglect, abuse, commercial use, alterations, modification, improper assembly, wear and tear, installation of parts or accessories not originally intended or compatible with the bicycle as sold, operator error, water damage, extreme riding, stunt riding, or improper follow-up maintenance. This warranty does not include consumables or normal wear and tear parts (tires, tubes, brake pads, cables and housing, grips). Rad Power Bikes will not be liable and/or responsible for any damage, failure or loss caused by any unauthorized service or use of unauthorized parts. In no event shall Rad Power Bikes be responsible for any direct, indirect or consequential damages, including without limitation, damages for personal injury, property damage, or economic losses, whether based on contract, warranty, negligence, or product liability in connection with their products. All claims to this warranty must be made through Rad Power Bikes. Proof of purchase may be required with any warranty request.

