

Creality Falcon2 Operation Guide



Please assemble the machine (Tutorials are in the user manual and TF card)

- Check all the accessories
- Assemble the laser module
- Assemble the air pump

1



Try to complete the first artwork!

- Read the **security statement** in the user manual carefully.
- Place the metal plate, honeycomb worktable(optional) and basswood. Adjust the focal length of the laser module.
- There are sample files in the TF card. Move a G-code file to the root directory, insert the TF card into the machine and start engraving.

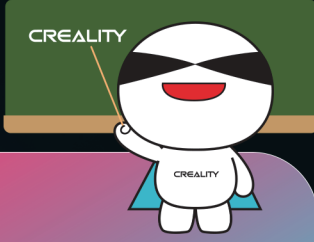
2



Try to complete your own artwork!

- Refer to the user guide of software and recommended parameters in the TF card.

3



If you have any problems during using the machine, please refer to the FAQ in the TF card or contact customer service of Creality.

- Search "**Creality Falcon Laser Engraver Official User Group**" in Facebook for more great content!

4



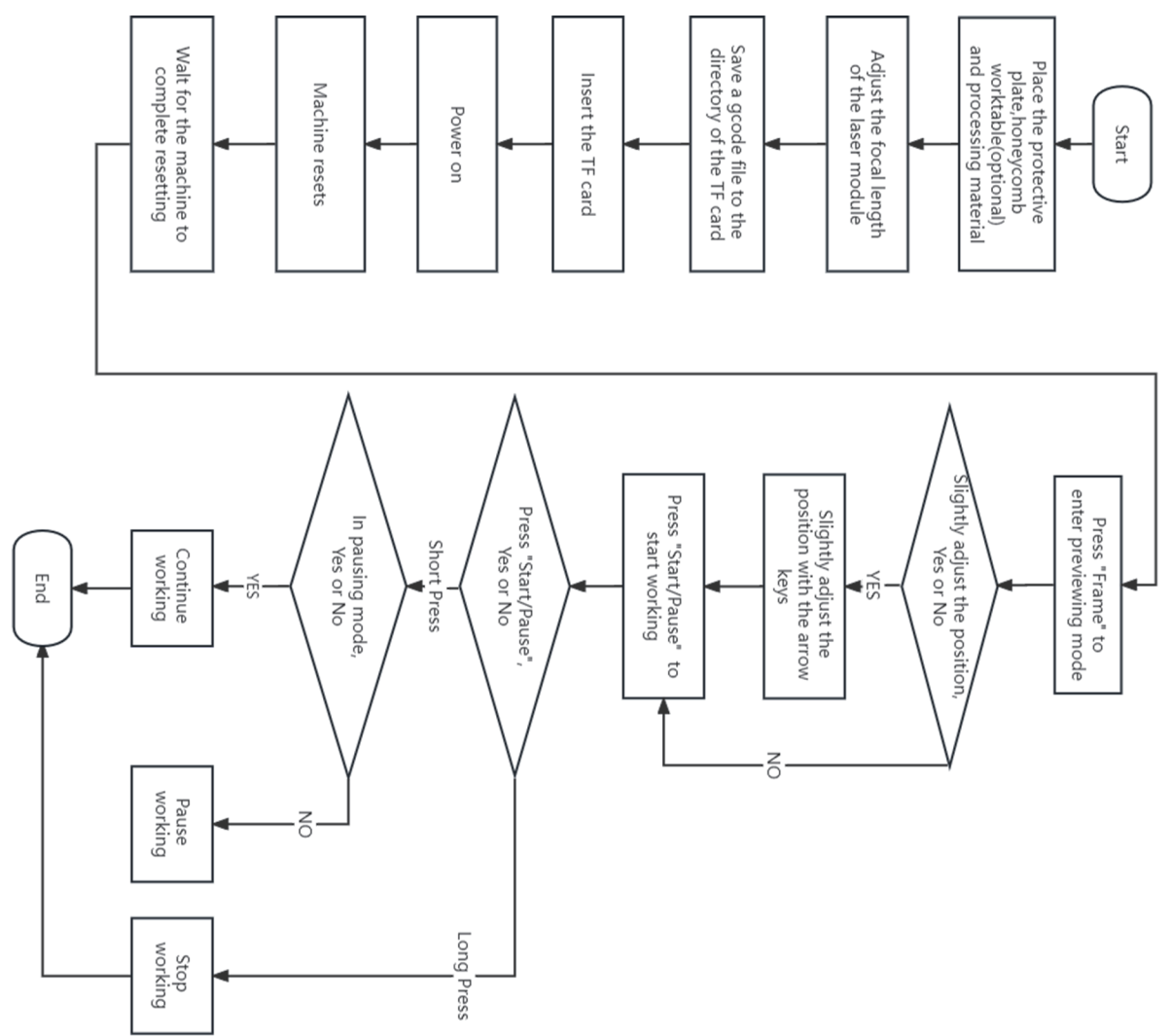
Creality 3D Print+ Official DIY Group



Creality Falcon Laser Engraver Official User Group

V1.0

Work with TF Card



Control from PC

