

# GISELA MAYER



# HEADWEAR!

Turbane . Tücher Turbans . Scarfs Turbanti . Foulards Turbans . Foulards Turbante . Pañuelo

## feel the comfort

2024/2025



(DE)

**ALLE STYLES, VIELE FAVORITES UND NEUE HEADWEAR MODELLE!**

Entdecken Sie unser komplettes Headwear Sortiment in unserem neuen Jahreskatalog. Alle Styles, zahlreiche Favorites und einige neue Modelle finden sich in der gesamten Kollektion und bieten eine einmalige Auswahl: Von sportlich und lässig bis hin zu elegant und verspielt finden sich die unterschiedlichsten Headwear Variationen für jeden Anlass. Dabei gibt es neben den Stoffen in aktuellen und trendigen Unicolors auch zahlreiche bunte oder dezente Prints und Muster. Die atmungsaktiven und hochwertigen Stoffe unserer Headwear Modelle bieten einen angenehmen Komfort und ein sicheres Tragegefühl. Feel the comfort!

(GB)

**ALL KINDS OF STYLES, MANY FAVOURITES AND NEW HEADWEAR DESIGNS!**

Discover our complete headwear range in our new annual catalogue. All kinds of styles, many favourites as well as brilliant new designs create an unique selection: From sporty and casual to elegant and playful – different variations for every occasion. Fabrics in up-to-date and trendy uni-colours, wonderful prints and stunning patterns will convince you. Beautiful turbans made of high quality cloth - breathable and comfy. Feel the comfort!

(FR)

**TOUS LES STYLES, BEAUCOUP DE COUPS DE CŒUR ET DE NOUVEAUX MODÈLES DE COUVRE-CHEFS!**

Découvrez notre gamme complète de couvre-chefs dans notre nouveau catalogue annuel. Tous les styles, de nombreux favoris et quelques nouveaux modèles se retrouvent dans toute la collection et offrent une sélection unique: du sportif et décontracté à l'élégant et ludique, il existe une grande variété de variations de couvre-chefs pour chaque occasion. En plus des tissus unicolores actuels et tendance, il existe également de nombreux imprimés à motifs colorés ou subtils. Les tissus légers et de haute qualité de nos couvre-chefs offrent un confort agréable et une tenue de port sûre. Ressentez le confort!

(IT)

**TUTTI I STILI, I PREFERITI E NUOVI MODELLO DI COPRICAPI.**

Scoprite il nostro assortimento completo di copricapi nel nostro nuovo catalogo annuale. Tutti i stili, i numerosi preferiti e i nuovi modelli si trovano nell'intera collezione offrendo una selezione unica. Dallo sportivo e casuale a quello elegante e giocoso presentiamo l'ampia gamma di copricapi per tutti i gusti e per ogni occasione. Oltre ai tessuti abituali in tinte unite e di tendenza, sono disponibili numerose stampe a fantasia colorate. La scelta di tessuti traspiranti e di alta qualità offre un piacevole comfort e una sensazione di sicurezza. Goditi il comfort.

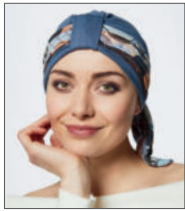
(ES)

**¡TODOS LOS ESTILOS, MUCHOS FAVORITOS Y NUEVOS MODELOS DE GORROS!**

Descubra nuestra amplia gama de gorros en nuestro nuevo catálogo anual. Todos los estilos, numerosos favoritos y algunos nuevos modelos que encontrará en toda la colección, ofrecemos una selección única; desde deportivos e informales hasta elegantes y divertidos, hay una amplia variedad de gorros para cada ocasión. Además de los tejidos en colores lisos actuales y de tendencia, también hay numerosos estampados y coloridos sutiles. Los tejidos transpirables y de alta calidad de nuestros modelos de gorros ofrecen una comodidad agradable y una experiencia de uso segura. ¡Siente la comodidad!







**Aktion 506**  
Seite 31



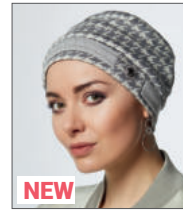
**Anea navy-silver** Seite 29



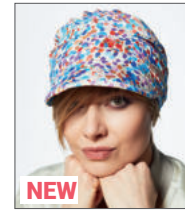
**Anna 506**  
Seite 10-11



**Bahama 506**  
Seite 32-33



**NEW**  
**Beanie Luri**  
grey Seite 29



**NEW**  
**Cap Kaya wood-rose** Seite 18



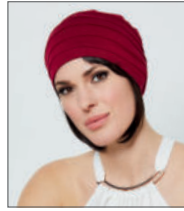
**Cap Meda**  
denim Seite 26



**NEW**  
**Cora red**  
Seite 23



**Ella 919**  
Seite 24



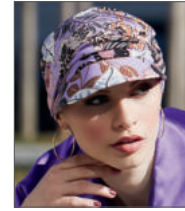
**Florida 635**  
Seite 20-21



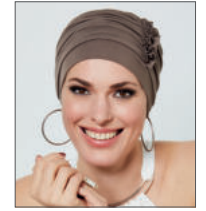
**Haarband Jolie**  
b-881 Seite 37



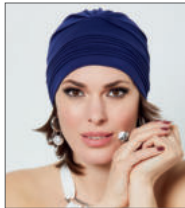
**Haarband Zoye**  
b-880 Seite 37



**Heda Sun b-93**  
Seite 18



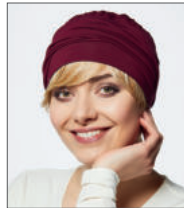
**Loreen 284**  
Seite 22



**Luna 460**  
Seite 25



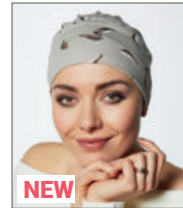
**Madrid b-821**  
Seite 14-15



**Malou 676**  
Seite 16



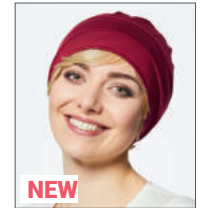
**Mayte grey**  
Seite 13



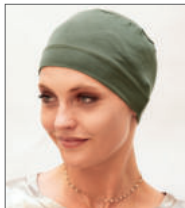
**NEW**  
**Mia stone**  
Seite 35



**Mira beige**  
Seite 36



**NEW**  
**Miri red**  
Seite 35



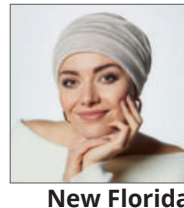
**Missy II 765**  
Seite 34



**Mola Jaquard**  
grey Seite 27



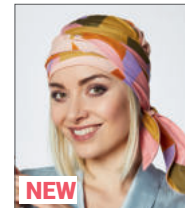
**New Emma**  
588 Seite 19



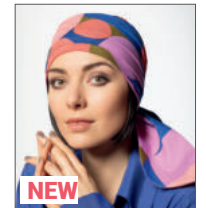
**New Florida**  
Deluxe stone  
Seite 28



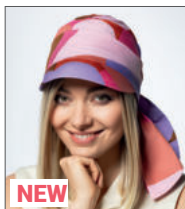
**Night Wig 263R**  
Seite 37



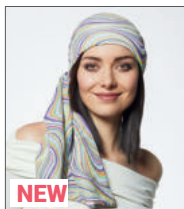
**NEW**  
**Nola Long lime**  
Seite 7



**NEW**  
**Nola Short**  
cobalt Seite 6



**NEW**  
**Nola Sun blush**  
Seite 12



**NEW**  
**Olea dusty**  
mint Seite 4-5



**Palma denim**  
blue Seite 23



**Rina antracite**  
Seite 8



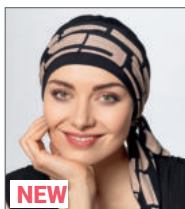
**NEW**  
**Rina Plissee**  
black Seite 9



**Set Anea b-830**  
Seite 36



**Set Maya**  
denim Seite 30



**NEW**  
**Set Pia black**  
Seite 17



**Wig Band**  
Seite 37



**Wig Cap Soft**  
Seite 37



**Wig Cap Soft**  
Small Seite 37



**dusty mint**  
+ (Hi Page  
4/6 Dark Brown)



**denim**





black  
+ (Band Move  
24/18T)



red



black

## Scarf *Olea*

Cap: 100% polyester

Futter: 95% bamboo - 5% spandex

Alle mehrfarbigen Stoffe können im Muster etwas variieren  
Pattern of multi colored styles may vary slightly



**cobalt**  
+ (Magic Date  
N4/6 Dark Brown)

# Nola Short

100% cotton



**blush**



**lilac**  
+ (Hi Page 4/6 Dark Brown)



**lime**  
+ (Hi Page 10/16/27+10  
Bernstein Balayage)



**peach**  
+ (Hi Page 23/14 Biscuit Blond)

Alle mehrfarbigen Stoffe können im Muster etwas variieren  
Pattern of multi colored styles may vary slightly





**black**



**blush**  
+ (Magic Rave Pink&Rosewood)



**cobalt**  
+ (Hi Page 10/16/27+10  
Bernstein Balayage)



**lime**  
+ (Hi Page 4/6 Dark Brown)

**lime**  
+ (Magic Stage)

# Nola Long

100% cotton



**black**



**antracite**  
+ (Magic Stage  
14/88+8  
Champagne Blayage)

# Rina *printed*

Cap: 95% bamboo - 5% spandex  
Band: 95% viscose - 5% spandex



navy blue



taupe



**antracite**  
+ (Hi Emma Cherry Rose)



**off white**  
+ (Hi Page 4/6 Dark Brown)



**bordeaux**



**black**

Alle mehrfarbigen Stoffe können im Muster etwas variieren  
Pattern of multi colored styles may vary slightly



**black**  
 + (Magic Whisper  
 14/88+8  
 Champagne Balayage)

# *Rina* plissee

Cap: 95% bamboo -  
 5% spandex  
 Band: 95% viscose -  
 5% spandex



**navy blue**



**black**  
 + (Hi Page 10/16/27+10  
 Bernstein Balayage)



**petrol**  
 + (Super Fringe 24/18T)



**bordeaux**  
 + (Super Fringe 4/6)



506\*  
+ (Super Fringe  
4/6)



# Anna

Uni Cap + Futter: 95% bamboo/viscose - 5% spandex  
\* Uni Cap + Futter: 95% viscose - 5% spandex





**b-900**  
 + (Magic Drive  
 14/88+8  
 Champagne Balayage)

# Anna

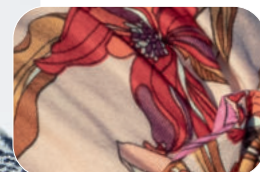
printed



**b-831\***



**b-833\***



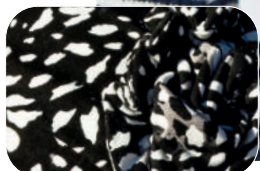
**b-834\***



**b-201\***



**b-93\***



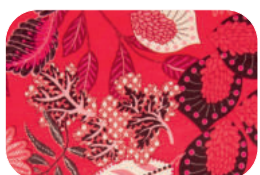
**b-101\***



**b-816\***



**b-817\***



**p-91\***



**p-84\***



**b-81\***



**b-900**  
 + (Band Move 24/18T)



**b-901**



**b-902**  
 + (Magic Whisper 14/88+8  
 Champagne Balayage)



**b-907**  
 + (Magic Rave Pink&Rosewood)

\* limited edition

Alle mehrfarbigen Stoffe können im Muster etwas variieren  
 Pattern of multi colored styles may vary slightly



**blush**  
+ (Magic Drive  
14/88+8  
Champagne  
Balayage)



# Nola Sun

100% cotton



**lime**  
+ (Hi Page 4/6 Dark Brown)



**blush**  
+ (Hi Emma Cherry Rose)

Alle mehrfarbigen Stoffe können im Muster etwas variieren  
Pattern of multi colored styles may vary slightly



grey

# Mayte

100% viscose



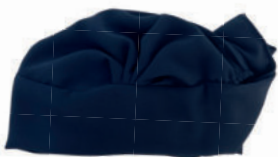
olive



coral\*



taupe



navy blue



antracite



icegrey

\* limited edition



b-821

# Madrid

printed

95% viscose - 5% spandex



terra\*



b-819\*



b-101\*



b-900

+ (Hi Page 10/16/27+10  
Bernstein Balayage)

Alle mehrfarbigen Stoffe können im Muster etwas variieren  
Pattern of multi colored styles may vary slightly

\* limited edition



905  
+ (Super Fringe  
4/6)

588



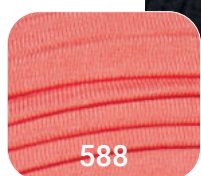
# Madrid

95% bamboo/viscose - 5% spandex  
\* 95% viscose - 5% spandex

142



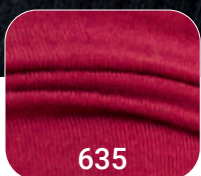
01



588



462



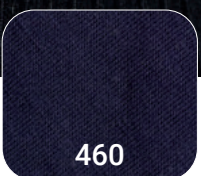
635



765



892



460



72



284



613\*



142



639



506



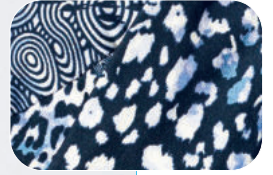
357\*



905



676  
+ (Magic Pony  
L22)



b-822\*\*



b-49\*\*



b-93\*\*



b-201\*\*

# Malou

Uni Cap + Futter: 95% bamboo/viscose + 5% spandex  
\* Uni Cap + Futter: 95% viscose + 5% spandex



\*\* limited edition



black

# Set Pia

Cap: 95% bamboo - 5% spandex  
 Band: 95% viscose - 5% spandex



**bordeaux**



**red**  
 + (Hi Page 10/16/27+10  
 Bernstein Balayage)



**black**  
 + (Hi Page 23/14 Biscuit Blond)



**blue**

*Alle mehrfarbigen Stoffe können im Muster etwas variieren  
 Pattern of multi colored styles may vary slightly*



woodrose  
+ (Clic  
12/14/26)



# Cap Kaya

Cap: 95% bamboo - 5% spandex  
Futter: 100% viscose



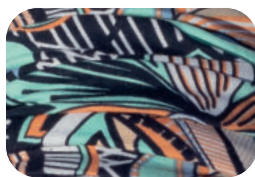
poppy red

# Heda Sun

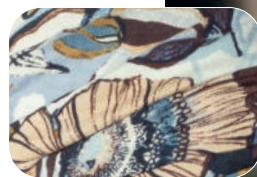
Cap: 95% viscose - 5% spandex  
Futter: 95% bamboo/viscose - 5% spandex



b-832\*



b-81\*



b-06\*

b-93\*



\* limited edition

Alle mehrfarbigen Stoffe können im Muster etwas variieren  
Pattern of multi colored styles may vary slightly



284

+ (Band Jolie b-205)  
+ (Go Curly Dark Brown)



588

+ (Go  
Dark Brown)



# New Emma

Cap + Futter: 95% bamboo + 5% spandex  
\* Cap + Futter: 95% viscose + 5% spandex



635  
+ (Pony Ellie  
24)

# Florida

Uni Cap + Futter: 95% bamboo/viscose - 5% spandex



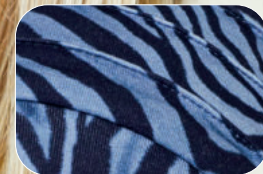


**b-903**  
 + (Magic Drive  
 14/88+8  
 Champagne Balayage)

# Florida

printed

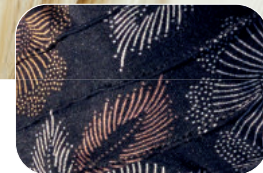
Print Cap: 95% viscose - 5% spandex  
 Futter: 95% bamboo/viscose - 5% spandex



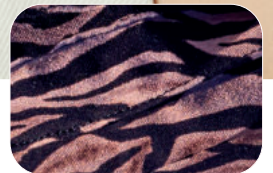
**b-818\***



**b-205\***



**b-210\***



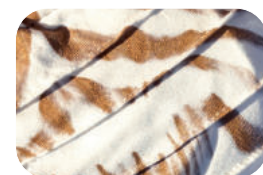
**b-819\***



**b-81\***



**b-832\***



**b-830\***



**b-831\***



**b-901**  
 + (Magic Rave Pink&Rosewood)



**b-906**  
 + (Hi Page 10/16/27+10 Bernstein Balayage)

\* limited edition

Alle mehrfarbigen Stoffe können im Muster etwas variieren  
 Pattern of multi colored styles may vary slightly



284



# Loreen

Cap: 95% bamboo/viscose - 5% spandex  
 Futter: 95% bamboo/viscose - 5% spandex  
 \* Cap + Futter: 95% viscose - 5% spandex



\*\* limited edition



red  
+ (Magic Date  
4/6)



# Cora

Cap: 95% bamboo - 5% spandex



# Palma

Cap: 100 %viscose  
Futter: 95% bamboo/viscose - 5% spandex



\* limited edition

denim blue  
+ (Go Dark  
Brown)



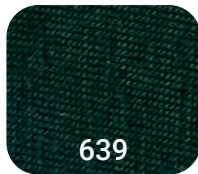
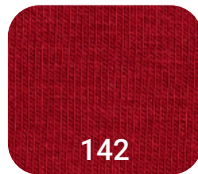
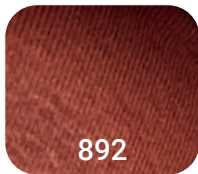
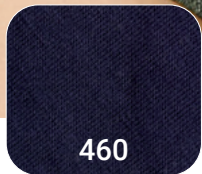


919\*  
+ (Pony Ellie  
Light Blond)

# Ella

Cap: 95% bamboo/viscose - 5% spandex  
Futter: 95% bamboo/viscose - 5% spandex  
\* Cap + Futter: 95% viscose - 5% spandex

462







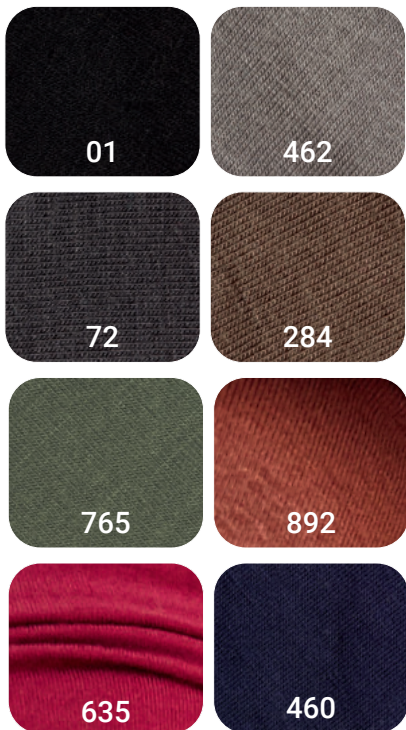
635  
+ (Go Light Blond)

# Luna

95% bamboo/viscose - 5% spandex



460  
+ (Super Fringe  
Long 4/6)





denim

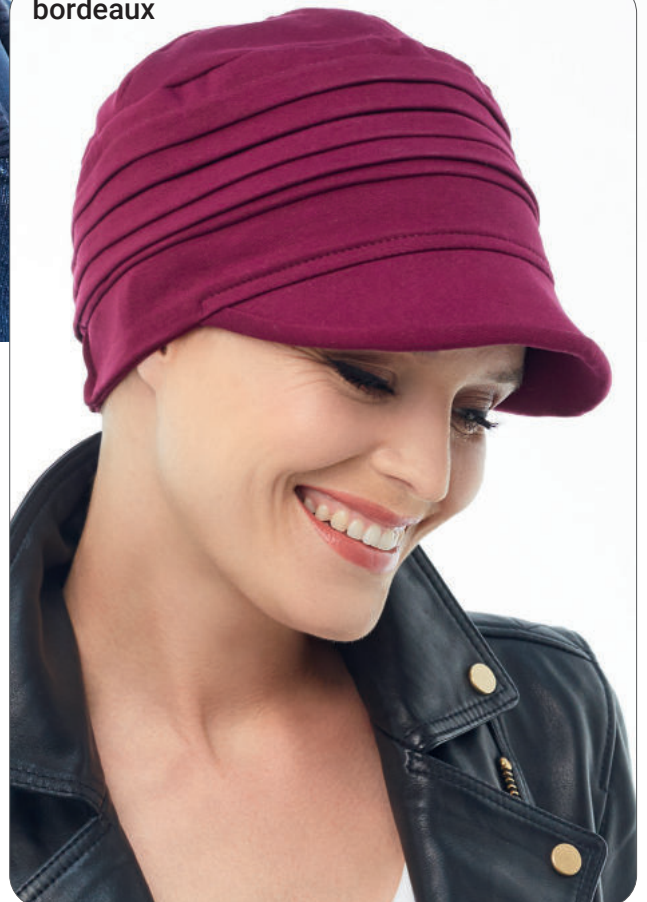
+ (Pony Ellie  
Light Blond)



# Cap Meda

Cap: 70% vi - 27% pa - 3% sp  
Futter: 95% bamboo - 5% spandex

bordeaux



navy blue



petrol



choco

olive





grey  
+ (Band Move  
24/18T)



# Mola Jaquard

Cap: 60% polyester -  
35% polyamid - 5% spandex  
Futter: 95% bamboo -  
5% spandex

cassis



denim



blue  
+ (Go Curly Dark Brown)



grey  
+ (Hi Page 4/6 Dark Brown)



stone

# New Florida Deluxe

Cap: 47% pl - 36% vi - 15% pa - 2% lurex  
Futter: 95% bamboo viscose - 5% spandex



black



silver



navy



rose



stone  
+ (Super Fringe L14/25)



grey

# Beanie Luri

Cap: 42% ry - 39% pe - 19% pa  
Futter: 95% bamboo - 5% spandex



navy-silver\*



olive-gold\*



choco-gold\*



navy-silver\*



# Anea

Cap + Band: 68% rayon - 27% polyamid - 5% spandex  
Futter: 95% viscose - 5% spandex

\* limited edition





denim  
+ (Hi Page  
4/6 Dark Brown)

# Set Maya

Cap: 70% viscose - 27% polyamid -  
3% spandex

Futter: 95% viscose - 5% spandex

Band: 70% viscose - 27% polyamid -  
3% spandex

black -  
snake  
gold





506  
+ (Band Jolie b-880)

765



# Aktion

95% bamboo/viscose - 5% spandex  
\* 95% viscose - 5% spandex





765  
 + (Pony 166 Long  
 Echthaar LF1625)



506  
 + (Super Fringe  
 223/23C  
 Light Blonde)



# Bahama

Uni Cap: 95% bamboo/viscose - 5% spandex  
 \* Uni Cap: 95% viscose - 5% spandex





b-820  
+ (Magic Date  
14/88+8  
Champagne Balayage)



b-06\*



p-86\*



b-81\*



b-801\*



p-205\*



b-102\*



p-44\*



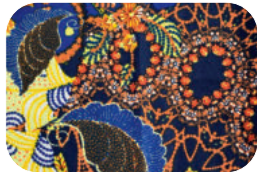
p-50\*



p-41\*



p-62\*



p-55\*

# Bahama printed

Print Cap: 95% viscose - 5% spandex

b-901



b-820



b-903



\* limited edition





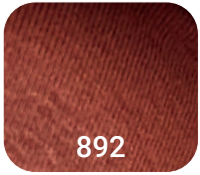
142



765



460



892



723



647



462



01



# *Missy II*

95% bamboo/viscose - 5% spandex



stone

# Mia

Sleep Cap

95 % cotton – 5 % spandex



off white



powder

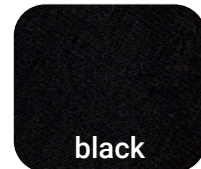
red

+ (Super Fringe  
223/23C  
Light Blonde)

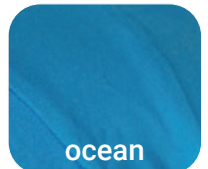


# Miri

95% bamboo/viscose -  
5% spandex



black



ocean



grey



denim



red



cappuccino



beige\*



# Mira

Cap: 95% viscose - 5 % spandex  
Futter: 95 % viscose - 5 % spandex



# Set Anea

95% viscose - 5% spandex



b-833\*



b-834\*

b-830\*



\* limited edition





**b-880**  
+ (Bahama 506)

## Haarband *Zoye*

95% viscose - 5% spandex



**b-702**



**b-880**



**b-881**



**b-881**  
+ (Cora red)

## Haarband *Folie*

95% viscose + 5% spandex



**b-882**



**p-840**



**b-903**

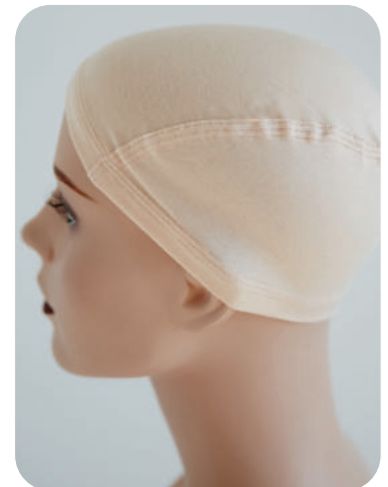


**Wig Band +  
Wig Cap** soft



**Night Wig**  
4/6, 8, 263R, 24/18, 51

inside Bamboo



**Wig Cap** soft (Bamboo)  
**Wig Cap** soft small

- ideale Passform und Tragekomfort
- atmungsaktives natürliches Material
- ideal fit - perfect wearing comfort
- breathable, natural material





TT4/263

**Super Fringe  
+ Turban Florida 635**

Haarlänge 8 – 10 cm

2/4, **4/6**, 637T, L8, L12, L1020, L14/25, 14/26R, 24/18T, 223/23C, 38, 44, 51, 56

Root colors: TT4/131\*, TT4/263, TT4/278, TT4/24/18, TT4/613



4/6

**Pony Elli (100% High Heat Fiber)  
+ Turban Bahama 765**

2/4, 4/6, 8R, 12R, 24/18T, **Light Blond**



ab/from 05/2024

**Pony Ultra Light  
(100% High Heat Fiber)**

ab/from 05/2024

**Pony Mono Lace (100% High Heat Fiber)**

RL2/4 Off Black, RL4/6 Black Coffee, RL6/8 Dark Chocolate, RL8/29RT Shaded Hazelnut, RL12/22RT Shaded Cappuccino, RL14/25RT Shaded Honey Ginger, **RL19/23 Biscuit**, RL19/23RT Shaded Biscuit, RL119 Smoke Silver, RL56/60 Silver



ab/from 05/2024

**Magic Wonder (100% High Heat Fiber)**

N4/6 Dark Brown, 27/4-4 Chocolate Hazelnut, 8/27-6 Hazelnut Mix, 10/16/27+10 Bernstein Rooted, 12/14/26+12 Dark Blond Rooted, 16/23+12 Champagne Mix, 713 Sandy Blond Mix, 130/33 Chestnut Mix, 38/Light Light Brown Grey Rooted, 48/38Root Stone Grey, 119 Smoke Silver, 305+Root Snow Mix Rooted, 305K Snow Mix, 60 Light Grey 14/88+8 Champagne Balayage, **23/14+6 Pearl Blond Balayage**



**New Front Filler**

1B, L6, L8, 12R, L1425, 14/26R, L14/88, **L1625**, LG25\*



**Front Filler**

**+ Turban Luna 460**

**R435S**, R829\*, L1625, 14/26, L22, LG130, 51R, 601R



ab/from 05/2024

**Band Move (100% High Heat Fiber)**

4/6 Medium Brown, 637T Nut Brown, TT4/278 Toasted Sesame, 14/26R Gold Blond, 14/88+8 Champagne Rooted, **24/18T Natural Blond**, RL19/23 Biscuit Blond

\*Solange Vorrat!/While stocks last!





**Magic Pony**

1B, 4/6, 8/25, L10/20, 14/16T, 14/26R, 14/88+8, 22/24, L22, RL19/23

**Magic Pony HH**

Espresso Mix, Dark Chocolate Mix, **Chocolate Mix**, Chestnut Mix, Bernstein Mix, Champagne Rooted, Nature Blond Mix, Sandy Blond Rooted



**Go Curly**

Dark Brown, **Medium Brown**, Light Brown, Dark Blond, Gold Blond, Light Blond, Platinum Blond, SCW914



**Go + Turban Palma Denim Blue**

Dark Brown, **Medium Brown**, Light Brown, Dark Blond, Gold Blond, Light Blond, Platinum Blond, 38, Pearl Grey, Light Grey, Silver Grey, SCW506, SCW914



**Super Fringe Long**

Haarlänge 15 – 20 cm

2/4, 4/6, 637T, L8, L12, L1020, L14/25, 14/26R, 24/18T, **223/23C**, 33/32C

Root colors: TT4/131, TT4/263, TT4/278, TT4/24/18, TT4/613



**Pony 166 II**

1B, 2/4, 4/6, 8, 12, 14A/24, 24/18T, 234, 23A/26, 51/56/60



**Pony 166 Long**

**Pony 166 Long Echthaar**

1, L2, L4, L6, L830, LG1020, L14/16, 1426HL, LF1625, L22, **LG25**, LG130\*\*\*

\*\*\*nur bei Pony 166 Long





**GM**  
GISELA  
MAYER  
HAIR COLLECTION

**MH**  
MAYER  
HAIR  
HAIR COLLECTION

Turbans . Tücher . Turbans . Scarfs . Turbanti . Foulards . Turbans . Foulards . Turbante . Pañuelo

# HEADWEAR!

easy to wear

