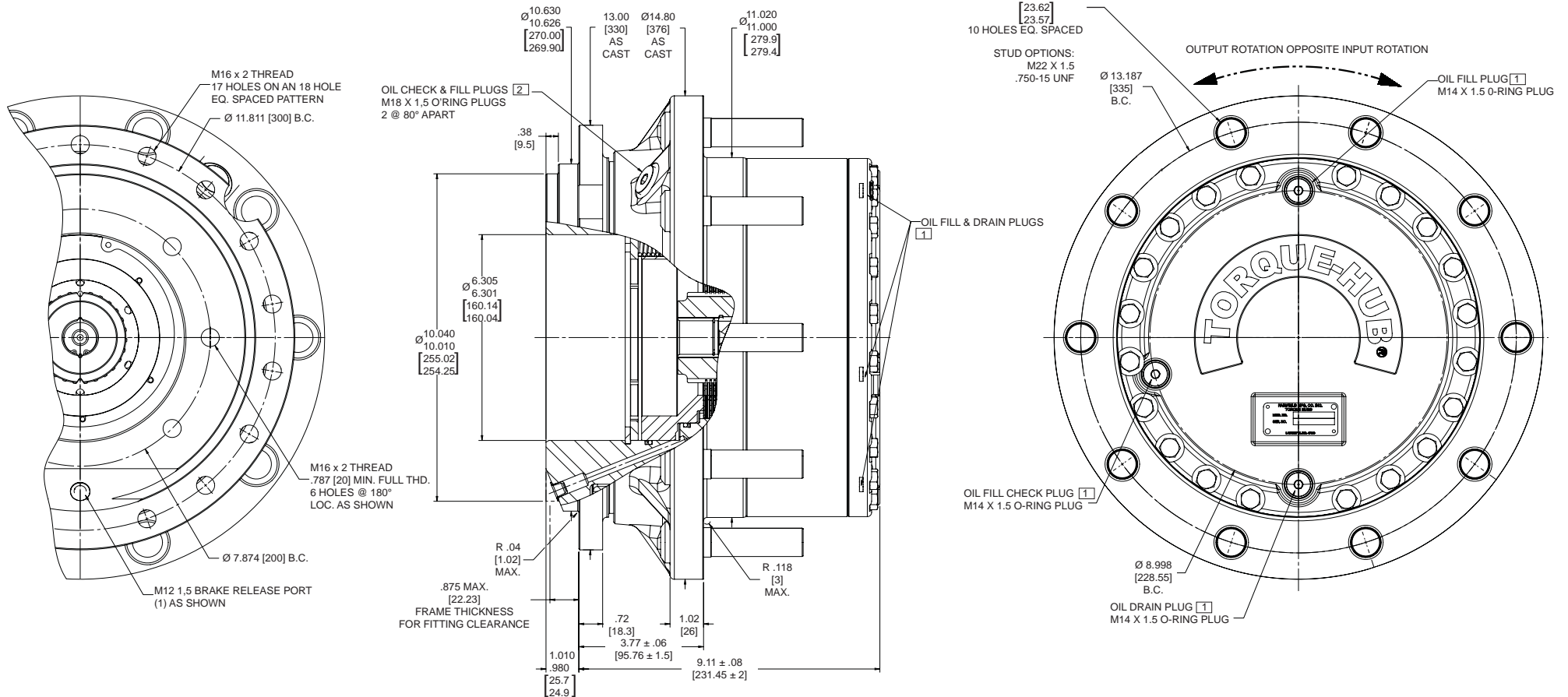


TORQUE-HUB[®]

Planetary Final Drives



ærlikon
fairfield

Catalog prints are representative of the units.
Before final design request a certified print from Fairfield.

NOTE: MM SHOWN IN ()
MOTOR CAVITY DIMENSIONS VARY WITH MODEL

OTHER MODELS ALSO AVAILABLE
FAIRFIELD BRAKE AVAILABLE

CW12E

Performance Data

Continuous	Intermittent
53,000 lb-in 6,000 Nm	106,000 lb-in 12,000 Nm

Speed Limitations

Units with Brake: 5,000 RPM Maximum Intermittent
(periods of 30 minutes or less)

Units without Brake: 6,000 RPM Maximum Intermittent
(periods of 30 minutes or less)

Weight

Approximately 205 lbs (93 kg)

Note: Specific models will change weights. Designed for use with cartridge style hydraulic motors.

CW12 Model Formula

Oil

Fill to half full with EP-90 oil on most applications.

Volume of Oil:

66 oz. (1,953 cm³) for CW12 units with brake included
84 oz. (2,485 cm³) for CW12 units without brake

Note: Oil volume will vary with specific model and application.

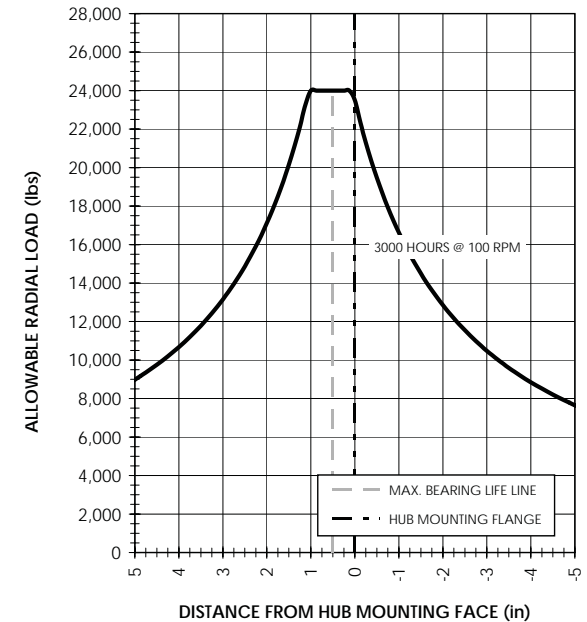
Conditions of Bearing Curve

Life = 3,000 hours B-10
Speed = 100 RPM output

To adjust for loads and speeds other than shown on curve:

$$\text{Adjusted Life (hrs)} = 3,000 \left(\frac{100 \text{ RPM}}{\text{Speed (Adjusted)}} \right) \times \left(\frac{\text{Load (Curve)}}{\text{Load (Adjusted)}} \right)^{10/3}$$

Bearing Curve



CW 12 E1 1 H 1 4 034

CW – Compact Wheel Drive

Output Torque Capacity
12 – 12,000 Nm

Housing/Spindle Configuration
(Contact Fairfield)

Hydraulic Motor Cavity Configuration

- 1** – Sauer-Danfoss H1B060, 51C060, 90K42/55, 40M46
Rexroth A2FE 45/56/63
Rexroth A6VE 55, A10VE63 (15T)
Parker/Voac F12 - 40/60, V12-60 (W50)
- 2** – Sauer-Danfoss 90M55, 90K75
- 4** – Sauer-Danfoss H1B080 (W35), 51C080 (W35)
- B** – Sauer-Danfoss H1B080 (W40), 51C080 (W40)
Rexroth A6VE80
Parker/Voac F12 - 80/90
Linde HMV075
- 7** – SAE “B”
- 8** – SAE “C”

Motor Shaft Input

- 4** – 14T, 12/24
- 7** – 21T, 16/32
- 8** – 15T, 16/32
- A** – W30x2x14x9g
- B** – W35x2x16x9g
- D** – W40x2x18x9g

Input Brake

- 0** – Not Included
- 1** – 3,090 lb-in (349 Nm)
- 2** – 4,495 lb-in (509 Nm)
- 3** – 5,338 lb-in (603 Nm)
- 4** – 3,652 lb-in (413 Nm)

Note: 3,000 PSI (207 Bar) maximum pressure for all brakes listed.

Ratios

- 018** – 18.50:1
- 022** – 21.50:1
- 026** – 26.13:1
- 030** – 29.54:1
- 034** – 34.23:1
- 041** – 41.09:1

Wheel Studs

- 0** – Not Included (.930/.928 thru hole)
- H** – M22 x 1.5 by 2.22”
- 1** – 3/4 - 16 UNC by 1.54”
- J** – M22 x 1.5 by 3.05”

aerlikon
fairfield

Fairfield Manufacturing Company, Inc.
First in Custom Gears and Drive Systems

www.fairfieldmfg.com