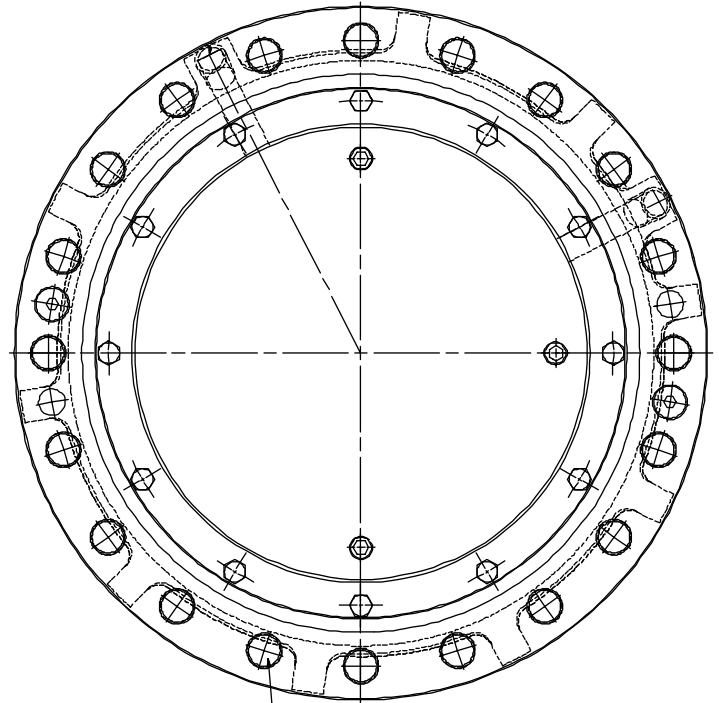
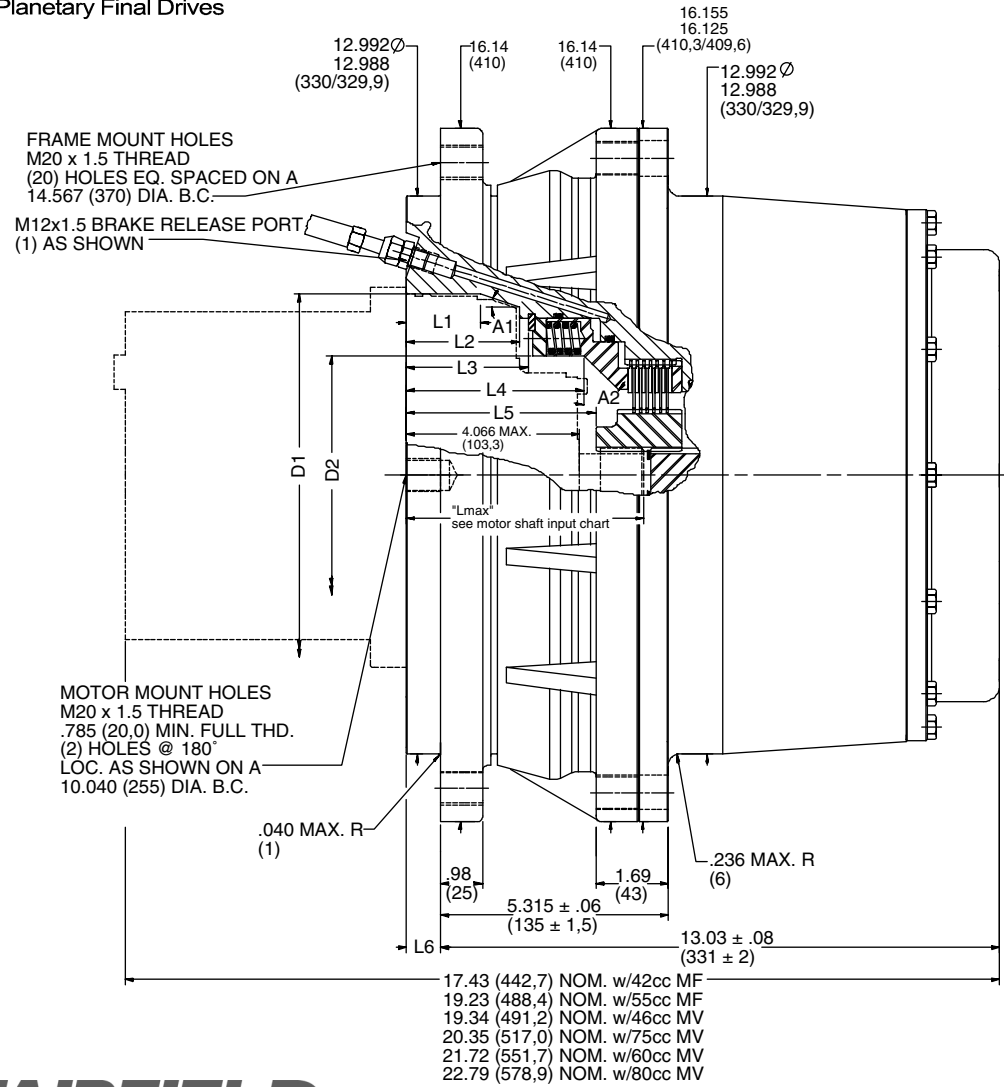


TORQUE-HUB®
 Planetary Final Drives



	D1	D2	L1 MIN.	L2 MIN.	L3 MIN.	L4 MIN.	L5 MIN.	L6 NOM.	A1	A2
CT45A11	6.303 \pm .002 (160,09 \pm ,05)	5.545 (140,84)	N/A	N/A	2.553 (64,85)	3.738 (94,95)	3.894 (98,91)	.79 (20,07)	N/A	45°
CT45A12	7.484 \pm .002 (190,09 \pm ,05)	5.545 (140,84)	N/A	2.625 (66,68)	2.824 (71,74)	4.102 (104,19)	4.265 (108,33)	.79 (20,07)	N/A	45°
CT45A13	7.484 \pm .002 (190,09 \pm ,05)	5.545 (140,84)	1.705 (43,31)	2.625 (66,68)	2.824 (71,74)	4.102 (104,19)	4.265 (108,33)	.79 (20,07)	20°	45°
CT45A14	7.484 \pm .002 (190,09 \pm ,05)	5.545 (140,84)	N/A	2.990 (75,95)	3.194 (81,13)	4.472 (113,59)	4.495 (114,17)	1.15 (29,21)	N/A	45°

NOTE: MM SHOWN IN ()
 MOTOR CAVITY DIMENSIONS VARY WITH MODEL

OTHER MODELS ALSO AVAILABLE

CT45

Performance Data

Continuous	Intermittent	Peak
200,000 lb-in 22,500 Nm	400,000 lb-in 45,000 Nm	Contact Fairfield

For ultimate torque and horsepower capacities, contact a Torque-Hub® representative.

Speed Limitations

Units with Brake: 5,000 RPM Maximum Intermittent (periods of 30 minutes or less)

Units without Brake: 6,000 RPM Maximum Intermittent (periods of 30 minutes or less)

Weight

Approximately 365 lbs (166 kg)

Note: Specific models will change weights.

CT45 Model Formula

CT 45 A1 1 0 0 4 136 D

CT – Compact Track Drive

Frame Size

Output Torque Capacity
45– 400,000 lb-in (45,000 Nm)

Housing/Spindle Configuration

Hydraulic Motor Cavity Configuration

- 1 – 42cc (MF), 55cc (MF), 46cc (MV), 60cc (MV)
- 2 – 55cc (MV), 75cc (MF)
- 3 – 75cc (MV)
- 4 – 80cc (MV)

Wheel Stud Configuration

- 0 – Not Included

Oil

Fill to half full with 90 weight gear lube with EP additive on most applications.

Volume of Oil:

- 160 oz. (4,706 cm³) for units without brake
- 144 oz. (4,235 cm³) for units with brake

Note: Oil level and type will vary with specific model and application.

Conditions of Bearing Curve

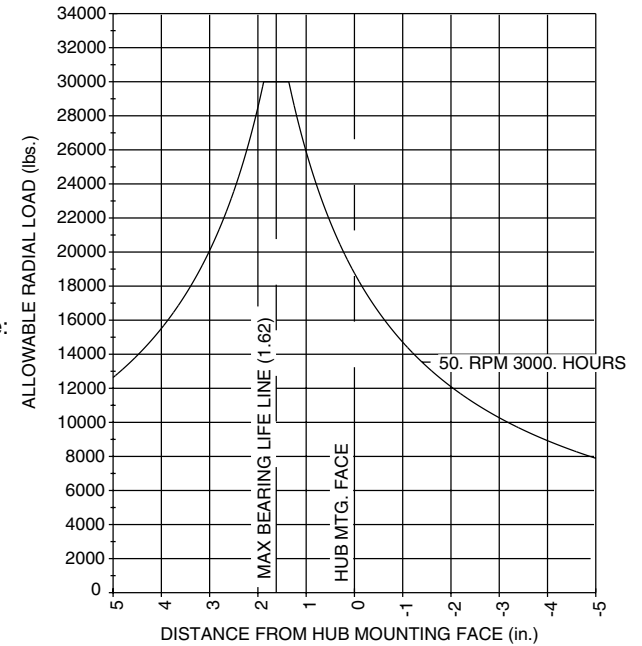
Life = 3000 hours B-10

Speed = 50 RPM output

To adjust for loads and speeds other than shown on curve:

$$\text{Adjusted Life (hrs)} = 3000 \left(\frac{50 \text{ RPM}}{\text{Speed (Adjusted)}} \right) \left(\frac{\text{Load (Curve)}}{\text{Load (Adjusted)}} \right)^{10/3}$$

Bearing Curve



Special Features

D – Input Disengage

Motor Shaft Input

- 4 – 14T, 12/24 (55cc, 75cc) L Max = 5.180 or 5.542
- 8 – 15T, 16/32 (42cc, 46cc) L Max = 5.042
- A – W30x2x14x9g (60cc) L Max = 5.042
- B – W35x2x16x9g (80cc) L Max = 5.955

Reduction

- 63 – 63.49:1
- 69 – 68.67:1
- 79 – 78.71:1
- 85 – 85.11:1
- 95 – 95.54:1
- 110 – 110.07:1
- 117 – 117.1:1
- 136 – 136.29:1

Static Input Brake

- 0 – Not Included
- D – 3,250 lb-in (367 Nm) STATIC
110 psi (8 bar) FULL RELEASE
- E – 4,335 lb-in (490 Nm) STATIC
140 psi (10 bar) FULL RELEASE
- F – 5,960 lb-in (673 Nm) STATIC
200 psi (14 bar) FULL RELEASE

Note: 3,000 PSI (207 Bar) Maximum Pressure for all brakes listed.

Torque-Hub is a registered trademark of Fairfield.
© 2000 Fairfield Manufacturing Company, Inc.

FAIRFIELD

GEARED FOR EXCELLENCE

Fairfield Manufacturing Company, Inc.

First in Custom Gears and Drive Systems

U.S. 52 South
P.O. Box 7940
Lafayette, IN 47903-7940 USA
Telephone (765) 772-4000
FAX (765) 772-4001
www.fairfieldmfg.com