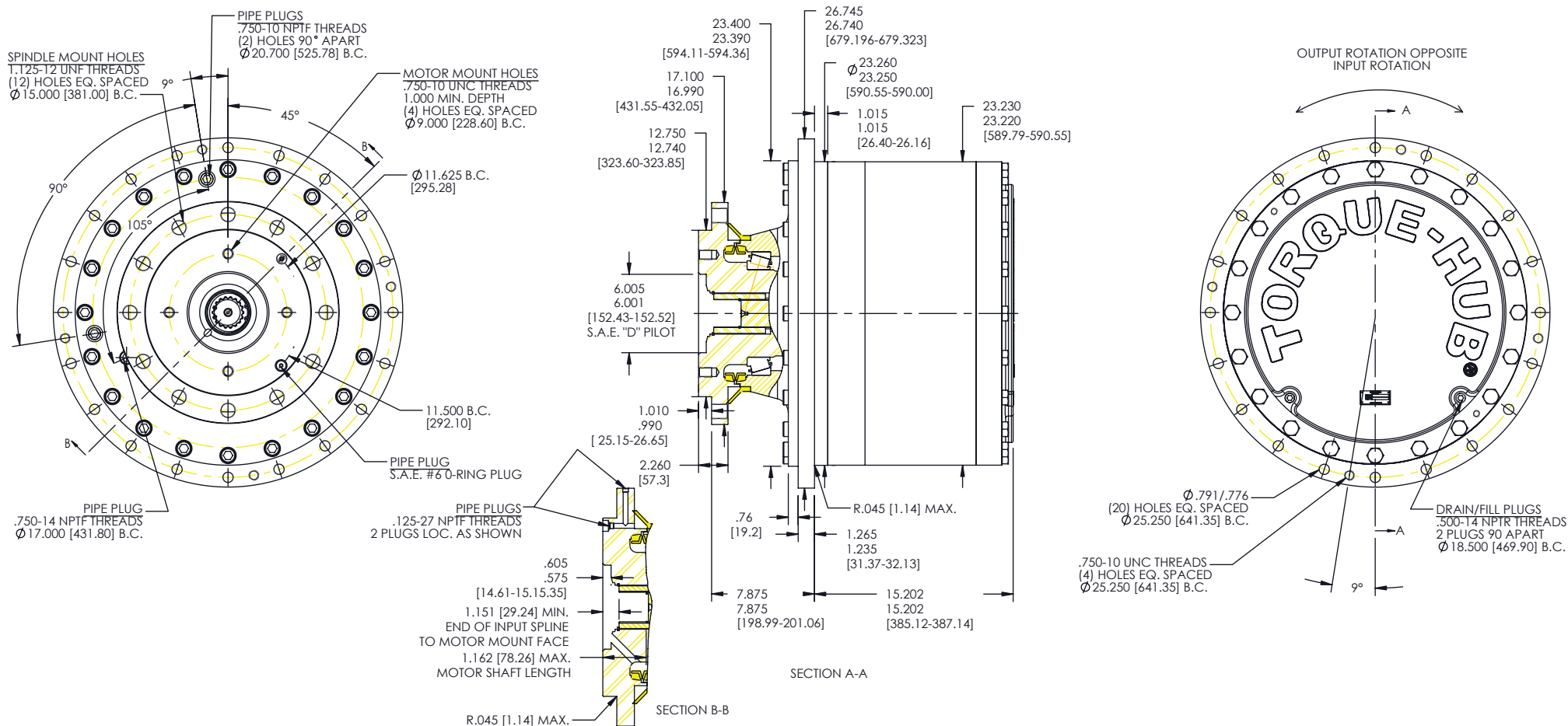


**TORQUE-HUB**  
Planetary Final Drives



**æerlikon**  
fairfield

Catalog prints are representative of the units.  
Before final design request a certified print from Fairfield.

NOTE: MM SHOWN IN ( )  
MOTOR CAVITY DIMENSIONS VARY WITH MODEL

OTHER MODELS ALSO AVAILABLE  
FAIRFIELD BRAKE AVAILABLE

## W80D1

### Performance Data

Continuous	Intermittent	Peak
800,000 in-lbs	1,600,000 in-lbs	
66,667 ft-lbs	133,333 ft-lbs	Contact Fairfield
90,395 N-m	180,791 N-m	
9,215 kg-m	18,429 kg-m	

For ultimate torque and horsepower capacities, contact a Torque-Hub® representative.

### Speed Limitations

**Input Speed:** 2,500 RPM Maximum Intermittent

### Weight

**Approximately** 1,725lbs (784kg)

Note: Specific models will change weights.

### W80D1 Model Formula

### Oil

Fill to half full with 90 weight gear lube with EP additive on most applications.

Note: Oil level and type will vary with specific model and application.

### Conditions of Bearing Curve

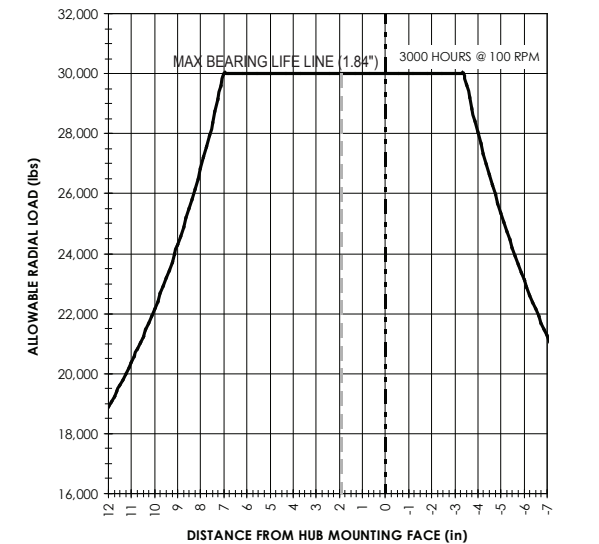
**Life =** 3,000 hours B10

**Speed =** 100 RPM output

To adjust for loads and speeds other than shown on curve:

$$\text{Adjusted Life (hrs)} = 3,000 \left( \frac{100 \text{ RPM}}{\text{Speed (Adjusted)}} \right) \left( \frac{\text{Load (Curve)}}{\text{Load (Adjusted)}} \right)^{\frac{10}{3}}$$

### Bearing Curve



**W 80 D1 0 35 Z Y**

**W - Torque-Hub Wheel Drive**

**80 - Series**

		Spindle		Hub		
	Motor Mount	Flange Mounting Dia.	Motor B.C.	Frame B.C.	Mounting Dia.	Flange B.C.
D1	SAE "D"	12.750/ 12.740	(4) 3/4-10 9.000 B.C.	(12) 1.125-12 15.000 B.C.	23.26/23.25	(20) .791/.776 25.250 B.C.

**Reduction**  
20 - 20.13  
35 - 34.63

**Special Features**  
Y - Seal Boot

**Input**  
0 - Not Included  
A - IA15F input adapter  
B - 18T, 8/16 spline

**Special features**  
Z - Blank

**oerlikon**  
**fairfield**

Fairfield Manufacturing Company, Inc.  
First in Custom Gears and Drive Systems

www.fairfieldmfg.com