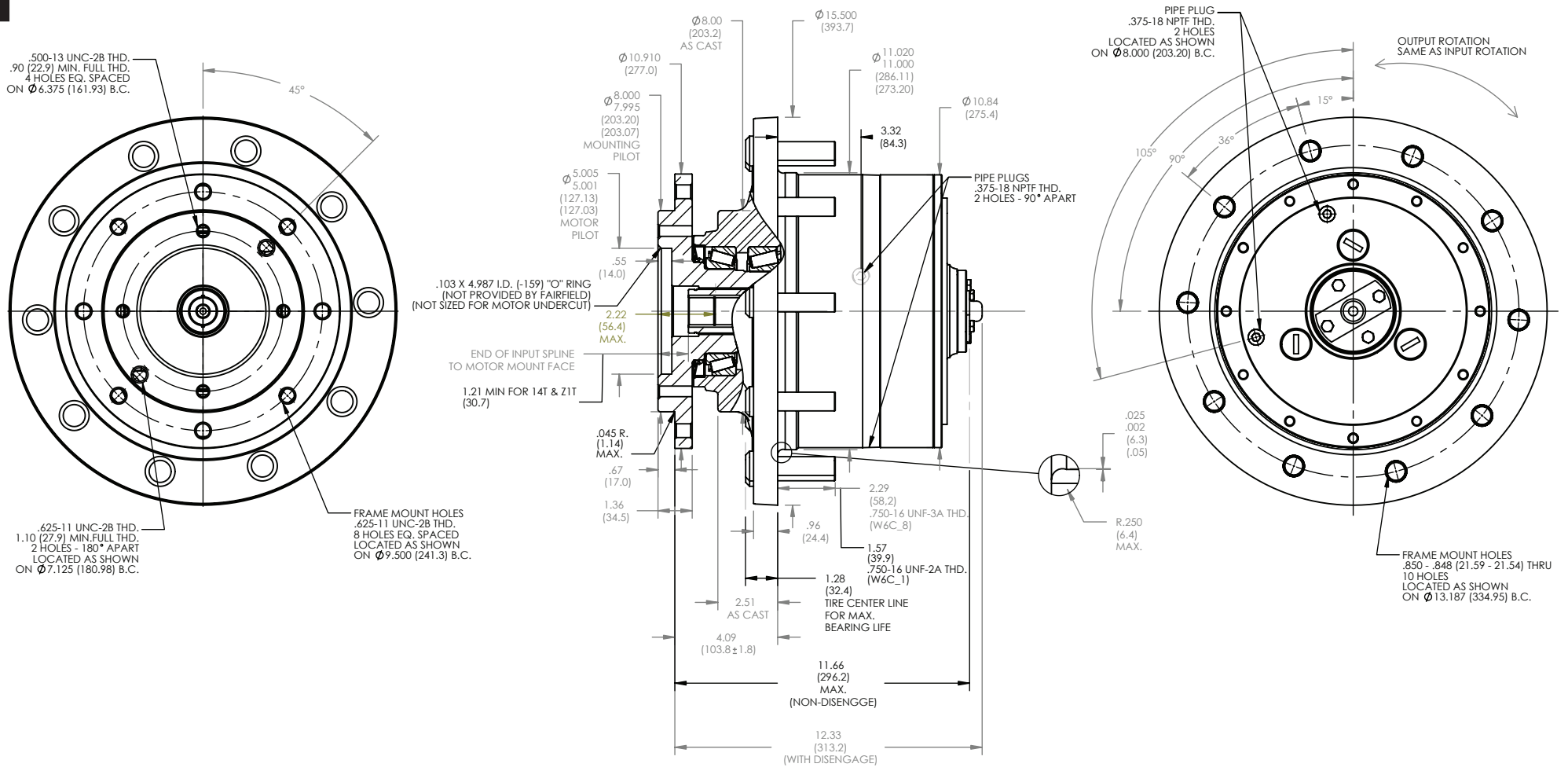


TORQUE-HUB
Planetary Final Drives



Catalog prints are representative of the units.
Before final design request a certified print from Fairfield.

NOTE: MM SHOWN IN ()
MOTOR CAVITY DIMENSIONS VARY WITH MODEL

OTHER MODELS ALSO AVAILABLE
FAIRFIELD BRAKE AVAILABLE

W6C1

Performance Data

Continuous	Intermittent	Peak
60,000 lb-in	120,000 lb-in	150,000 lb-in
5,000 lb-ft	10,000 lb-ft	12,500 lb-ft
6,779 Nm	13,558 Nm	16,950 Nm
691 kg-m	1,383 kg-m	1,725 kg-m

For ultimate torque and horsepower capacities, contact a Torque-Hub® representative.

Speed Limitations

Input Speed: 5,000 RPM Maximum Intermittent

Weight

Approximately 265 lbs (119 kg)

Note: Specific models will change weights.

W6C1 Model Formula

Oil

Fill to half full with 90 weight gear lube with EP additive on most applications.

Approximate Volume 50 oz. (1,479 cm³)

Note: Oil level and type will vary with specific model and application.

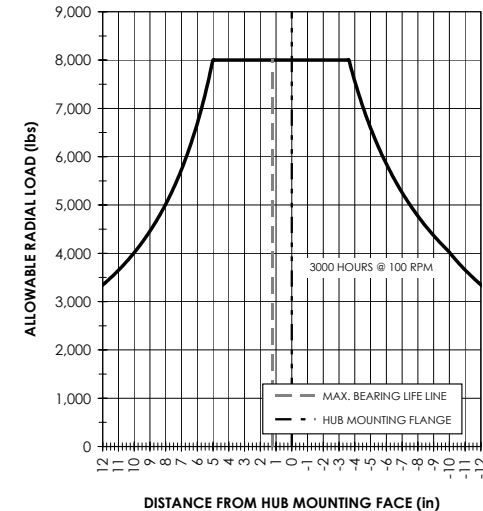
Conditions of Bearing Curve

Life = 3,000 hours B-10
Speed = 100 RPM output

To adjust for loads and speeds other than shown on curve:

$$\text{Adjusted Life (hrs)} = 3,000 \left(\frac{100 \text{ RPM}}{\text{Speed (Adjusted)}} \right) \times \left(\frac{\text{Load (Curve)}}{\text{Load (Adjusted)}} \right)^{10/3}$$

Bearing Curve



W 6 C1 1 0 7 19 Z B H

W – Torque-Hub® Wheel Drive

6 – Series

Spindle				Hub		
Motor Mount	Flange Mounting Dia.	Motor B.C.	Frame B.C.	Mounting Dia.	Flange B.C.	
C1	SAE "C"	8.000 7.995	(4) 1/2-13 6.375 B.C.	(8) 5/8-11 9.500 B.C.	11.020 11.000	(10) .852/.849 13.187 B.C.

Stud

- 0** – Not Included
- A** – 3/4 - 16 by 3.03 in. (use with .875/.873 flange hole on steel hub)
- 1** – 3/4 - 16 by 2.53 in. (use with .852/.849 flange hole on cast iron hub)
- 5** – 3/4 - 16 Am. Nat. thd. by 2.63 in. (use with .875/.873 flange hole on steel hub)
- 7** – 5/8 - 18 by 2.43 in. (use with .642/.639 flange hole on steel hub)
- 8** – 3/4 - 16 by 3.25 in. (use with .852/.849 flange hole on cast iron hub)
- 9** – 5/8 - 18 by 2.94 in. (use with .642/.639 flange hole w/c bore on steel hub)

Input

- C** – 14T, 12/24 with Solid Cover Cap (has spring)
- 3** – 13T, 16/32 Spline
- 4** – 14T, 12/24 Spline
- 7** – 21T, 16/32 Spline (not available in 26:1 and 32:1)
- 8** – 15T, 16/32 Spline

Options

- 0** – Blank
- Z** – Seal Boot

Reduction

- 13** – 13.07:1
 - 15** – 15.30:1
 - 19** – 19.04:1
 - 26** – 25.96:1
 - 32** – 32.31:1
 - *55** – 55.08:1
 - *93** – 93.46:1
 - *116** – 116.32:1
- * uses G07 "gear head drive"

Special Features

H – Heavy Duty Carrier

Special Features

B – For additional thrust washer and bearing see Application Engineer
Z – Blank

Special Features

Q – Quick Disconnect
X – Antisengage Spacer in Coupling
Z – Blank

æerlikon
fairfield

Fairfield Manufacturing Company, Inc.

First in Custom Gears and Drive Systems

www.fairfieldmfg.com