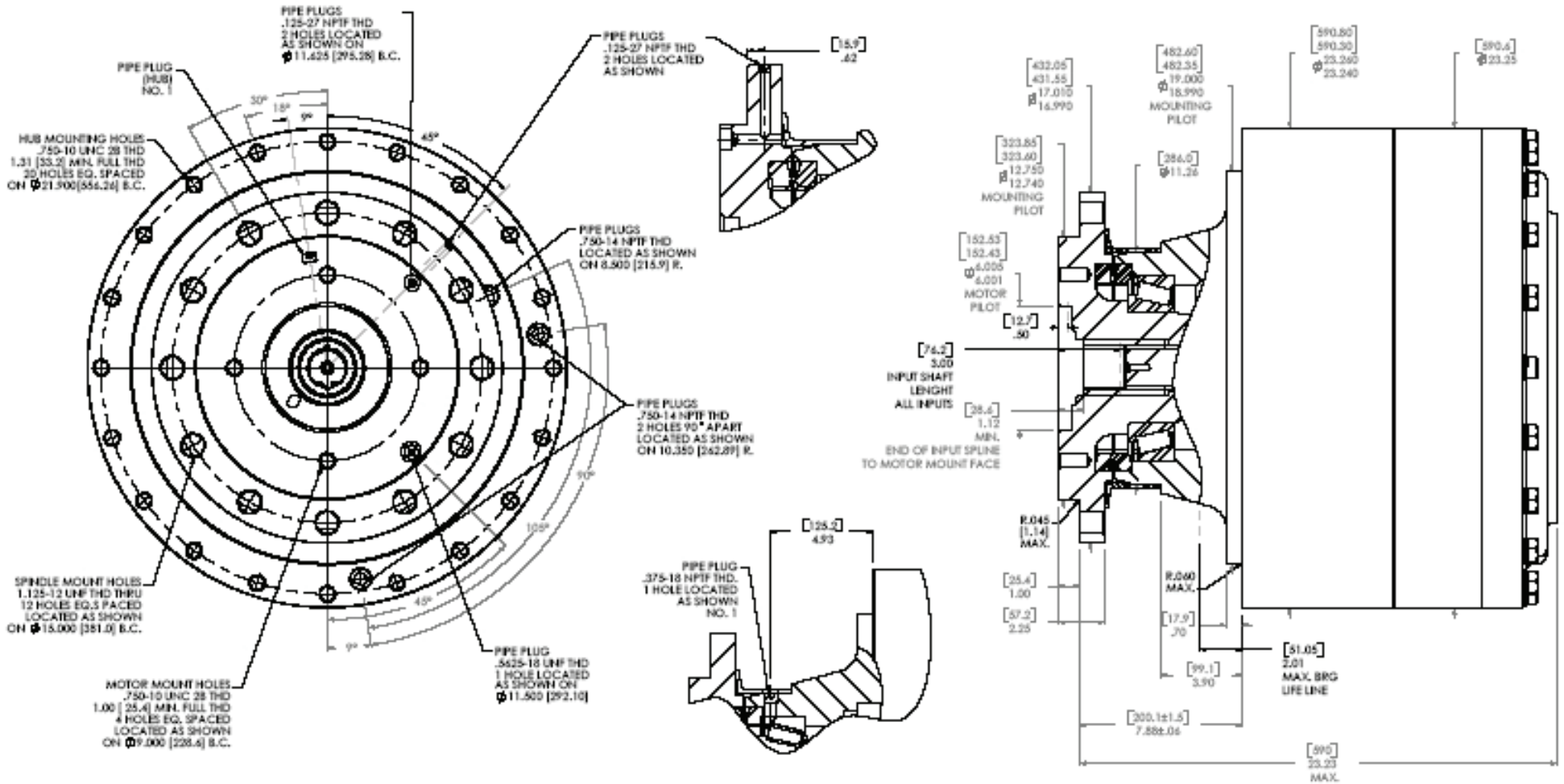


50 Series
W50D9
 Application Sheet

TORQUE-HUB.
 Planetary Final Drives



(Same as rotation available - Contact Fairfield)



Catalog prints are representative of the units.
 Before final design request a certified print from Fairfield.

NOTE: MM SHOWN IN ()
 MOTOR CAVITY DIMENSIONS VARY WITH MODEL

OTHER MODELS ALSO AVAILABLE
 FAIRFIELD BRAKE AVAILABLE

W50D9

Performance Data

Continuous	Intermittent	Peak
500,000 lb-in	1,000,000 lb-in	Contact Fairfield
41,667 lb-ft	83,333 lb-ft	
56,453 Nm	112,906 Nm	
5,760 kg-m	11,520 kg-m	

For ultimate torque and horsepower capacities, contact a Torque-Hub® representative.

Speed Limitations

Input Speed: 3,000 RPM Maximum Intermittent

(Contact Fairfield for specific speed information)

Weight

Approximately 1,360 lbs (612 kg)

Note: Specific models will change weights.

W50D9 Model Formula

W – Torque-Hub® Wheel Drive

50 – Series

	Spindle			Hub	
	Motor Mount	Flange Mounting Dia.	Motor B.C.	Flange B.C.	Mounting Dia.
D9	SAE "D"	$\frac{12.750}{12.740}$	(3) 3/4-10 9.000 B.C.	(12) 1 1/8-12 15.000 B.C.	$\frac{19.000}{18.990}$ (20) 3/4-10 21.900 B.C.

æerlikon
fairfield

Fairfield Manufacturing Company, Inc.

First in Custom Gears and Drive Systems

www.fairfieldmfg.com

Oil

Fill to half full with 90 weight gear lube with EP additive on most applications.

Approximate Volume 500 oz. (14,886 cm³)

Note: Oil level and type will vary with specific model and application.

Conditions of Bearing Curve

Life = 3,000 hours B-10

Speed = 100 RPM output

To adjust for loads and speeds other than shown on curve:

$$\text{Adjusted Life (hrs)} = 3,000 \left(\frac{100 \text{ RPM}}{\text{Speed (Adjusted)}} \right)^x \left(\frac{\text{Load (Curve)}}{\text{Load (Adjusted)}} \right)^{10/3}$$

W 50 D9 5 24 C Y

Input

0 – No Input Provided

W – 16T, 8/16 Spline

5 – 13T, 8/16 Spline

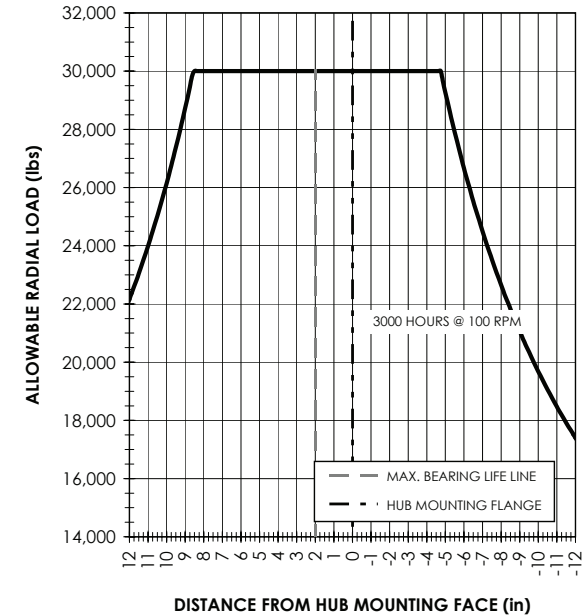
Reduction

18 – 18.06:1

20 – 20.49:1

24 – 23.95:1

Bearing Curve



Special Features

Y – Seal Boot

Special Features

Z – Blank

B – Thrust Bearing in Cover
(available in 16T input with 18:1 ratio)

C – Ball Bearing in Cover
(available in 16T input with 18:1, 19:1, and 24:1 ratios)