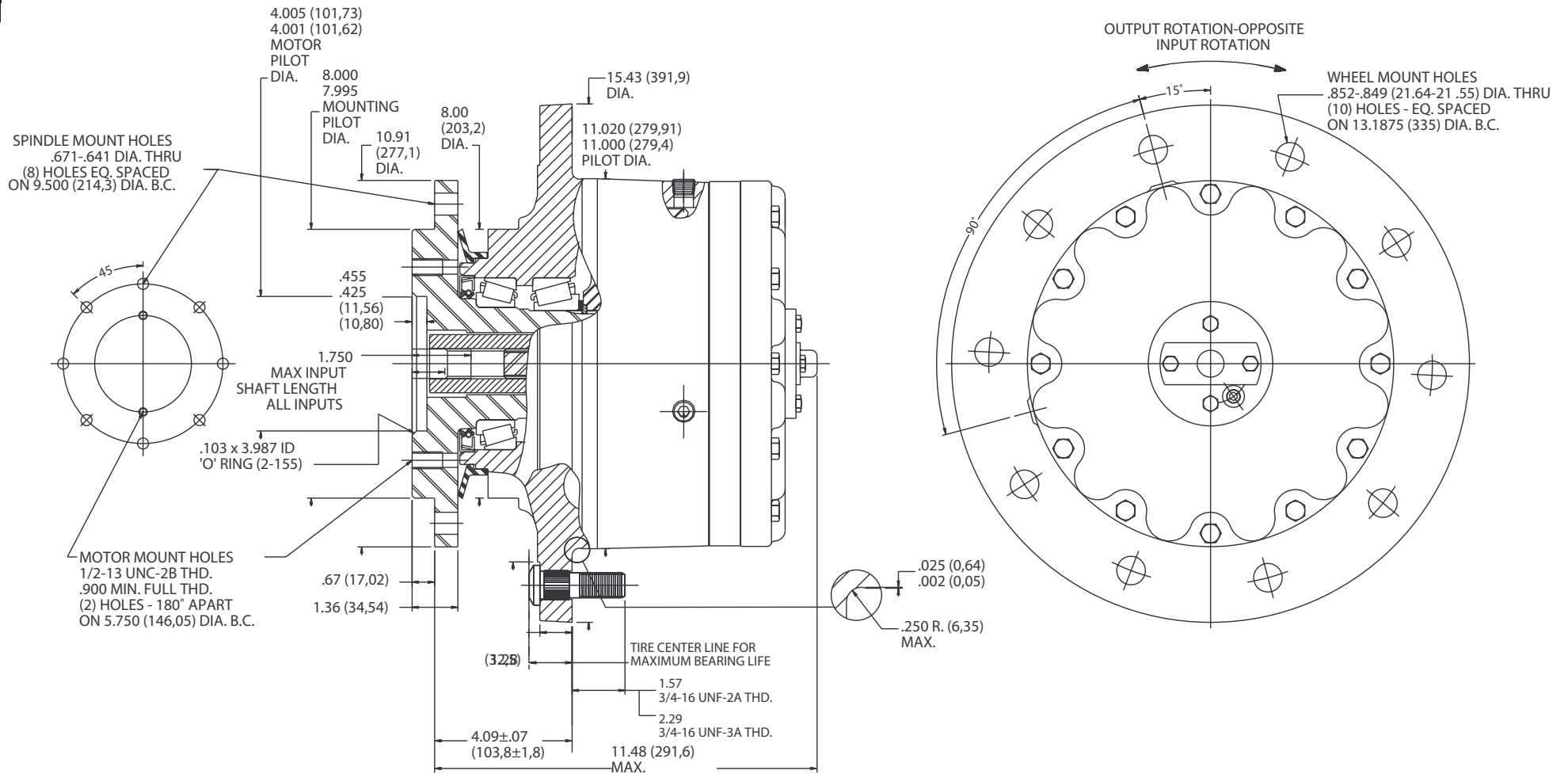


W3B1

Application Sheet

TORQUE-HUB[®]

Planetary Final Drives



oerlikon
fairfield

Catalog prints are representative of the units.
Before final design request a certified print from Fairfield.

NOTE: MM SHOWN IN ()
MOTOR CAVITY DIMENSIONS VARY WITH MODEL

OTHER MODELS ALSO AVAILABLE
FAIRFIELD BRAKE AVAILABLE

W3B1

Performance Data

Continuous	Intermittent	Peak
37,500 lb-in	75,000 lb-in	100,000 lb-in
3,125 lb-ft	6,250 lb-ft	8,333 lb-ft
4,234 Nm	8,468 Nm	11,290 Nm
432 kg-m	864 kg-m	1,152 kg-m

For ultimate torque and horsepower capacities, contact a Torque-Hub® representative.

Speed Limitations

Input Speed: 4,000 RPM Maximum
Horsepower: Contact Fairfield

Weight

Approximately 205 lbs (94Kg)

Note: Specific models will change weights.
 Gear kit available for this assembly.
 Consult Fairfield for details.

W3B1 Model Formula

Oil

Fill to half full with 90 weight gear lube with EP additive on most applications.

Approximate Volume 44 oz. (1,301 cm³)

Note: Oil level and type will vary depending on specific model and application.

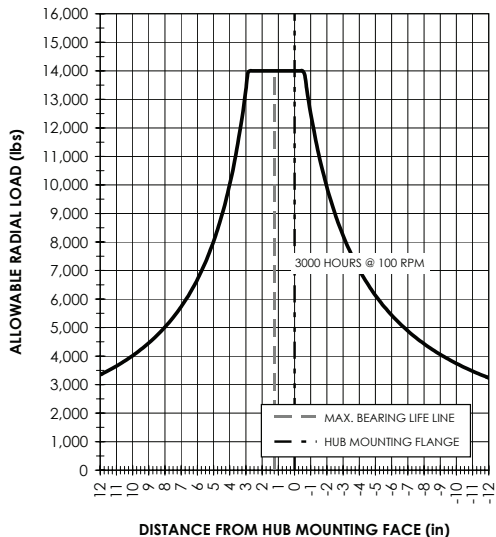
Conditions of Bearing Curve

Life = 3,000 hours B-10
Speed = 100 RPM output

To adjust for loads and speeds other than shown on curve:

$$\text{Adjusted Life (hrs)} = 3,000 \left(\frac{100 \text{ RPM}}{\text{Speed (Adjusted)}} \right) \times \left(\frac{\text{Load (Curve)}}{\text{Load (Adjusted)}} \right)^{10/3}$$

Bearing Curve



W 3 B1 1 0 3 43 ZB

W – Torque-Hub® Wheel Drive

3 – Series

Special Features

ZB – Standard Disconnect
XB – Coupling Subassembly with Antidisenengage Spacer

Special Options

0 – Blank
Z – Seal Boot

Reduction

18 – 18.75:1
24 – 24.43:1
30 – 30.04:1
35 – 34.49:1
43 – 42.50:1
54 – 53.58:1
73 – 72.68:1

		Spindle		Hub		
	Motor Mount	Flange Mounting Dia.	Motor B.C.	Frame B.C.	Mounting Dia.	Flange B.C.
B1	SAE "B"	8.000 7.995	(2) 1/2-13 5.750 B.C.	(8) 21/32 9.500 B.C.	11.020 11.000	(10) .852-.849(21.64-21.55) 13.1875 B.C.
B2	SAE "B"	8.000 7.995	(2) 1/2-13 5.750 B.C.	(8) 5/8-11 9.500 B.C.	11.020 11.000	(10) .852-.849(21.64-21.55) 13.1875 B.C.
BR	SAE "B"	8.000 7.995	(2) 1/2-13 5.750 B.C.	(10) .875/.873 9.500 B.C.	11.020 11.000	(10) .875/.873 13.1875 B.C.

S.A.E. "C" model also available. Please contact Fairfield.



Fairfield Manufacturing Company, Inc.
 First in Custom Gears and Drive Systems

www.fairfieldmfg.com