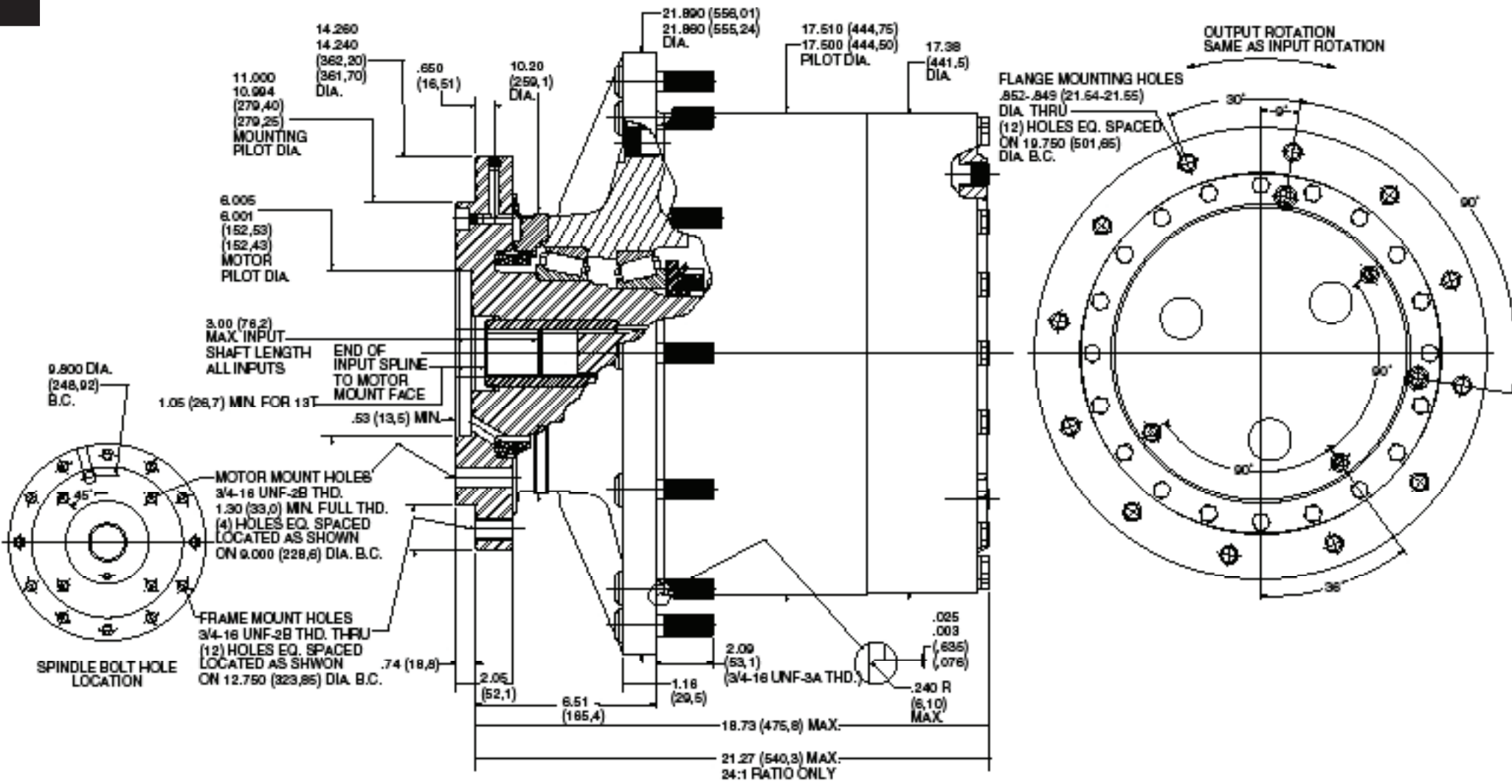


# W25D4 Application Sheet

**TORQUE-HUB**  
Planetary Final Drives



**æerlikon**  
fairfield

Catalog prints are representative of the units.  
Before final design request a certified print from Fairfield.

NOTE: MM SHOWN IN ( )  
MOTOR CAVITY DIMENSIONS VARY WITH MODEL

OTHER MODELS ALSO AVAILABLE  
FAIRFIELD BRAKE AVAILABLE

## W25D4

### Performance Data

Continuous	Intermittent	Peak
200,000 lb-in	400,000 lb-in	Contact Fairfield
16,667 lb-ft	33,333 lb-ft	
22,600 Nm	45,200 Nm	
2,300 kg-m	4,600 kg-m	

For ultimate torque and horsepower capacities, contact a Torque-Hub® representative.

### Speed Limitations

**Input Speed:** 3,000 RPM Maximum Intermittent

(Contact Fairfield for specific speed information)

### Weight

**Approximately** 740 lbs (333 kg)

Note: Specific models will change weights.

### W25D4 Model Formula

### Oil

Fill to half full with 90 weight gear lube with EP additive on most applications.

**Approximate Volume** 228 oz. (6,788 cm<sup>3</sup>)

Note: Oil level and type will vary with specific model and application.

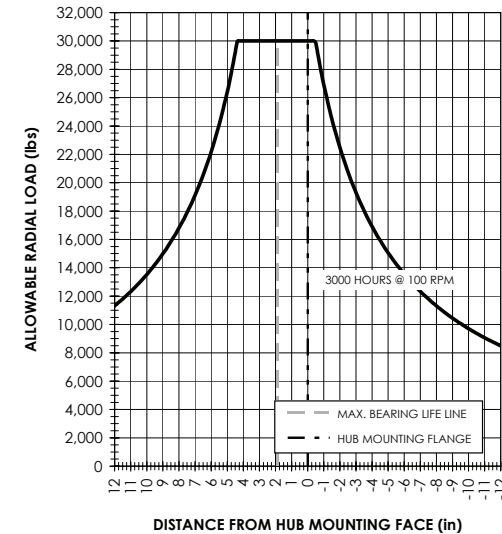
### Conditions of Bearing Curve

**Life** = 3,000 hours B-10  
**Speed** = 100 RPM output

To adjust for loads and speeds other than shown on curve:

$$\text{Adjusted Life (hrs)} = 3,000 \left( \frac{100 \text{ RPM}}{\text{Speed (Adjusted)}} \right) \times \left( \frac{\text{Load (Curve)}}{\text{Load (Adjusted)}} \right)^{10/3}$$

### Bearing Curve



**W 25 D4 0 Z 5 25**

### W – Torque-Hub® Wheel Drive

### 25 – Series

Spindle				Hub	
Motor Mount	Flange Mounting Dia.	Motor B.C.	Frame B.C.	Mounting Dia.	Flange B.C.
D4	SAE "D"	(4) 3/4-16 9.000 B.C.	(12) 3/4-16 12.750 B.C.	17.510 17.500	(12) .852/.849 19.750 B.C.

SAE "C" model available. Please contact Fairfield.

**Input**  
5 – 13T, 8/16 Spline

### Reduction

19 –	18.95:1
24 –	23.75:1
25 –	24.75:1
*67 –	67.37:1 - SAE"C"
INPUT	
*88 –	88.05:1 - SAE"C"
INPUT	

\*used in conjunction with S1C gear package

### Options

0 – Blank  
Z – Seal Boot

### Studs

0 – Not Included  
5 – 3/4 - 16 Am. Nat. Thd. by 2.63 in.  
(use with .875/.873 flange hole on steel hub)  
8 – 3/4 - 16 by 3.25 in. (use with .852/.849 flange hole on cast iron hub)

**æerlikon**  
**fairfield**

Fairfield Manufacturing Company, Inc.

First in Custom Gears and Drive Systems

www.fairfieldmfg.com