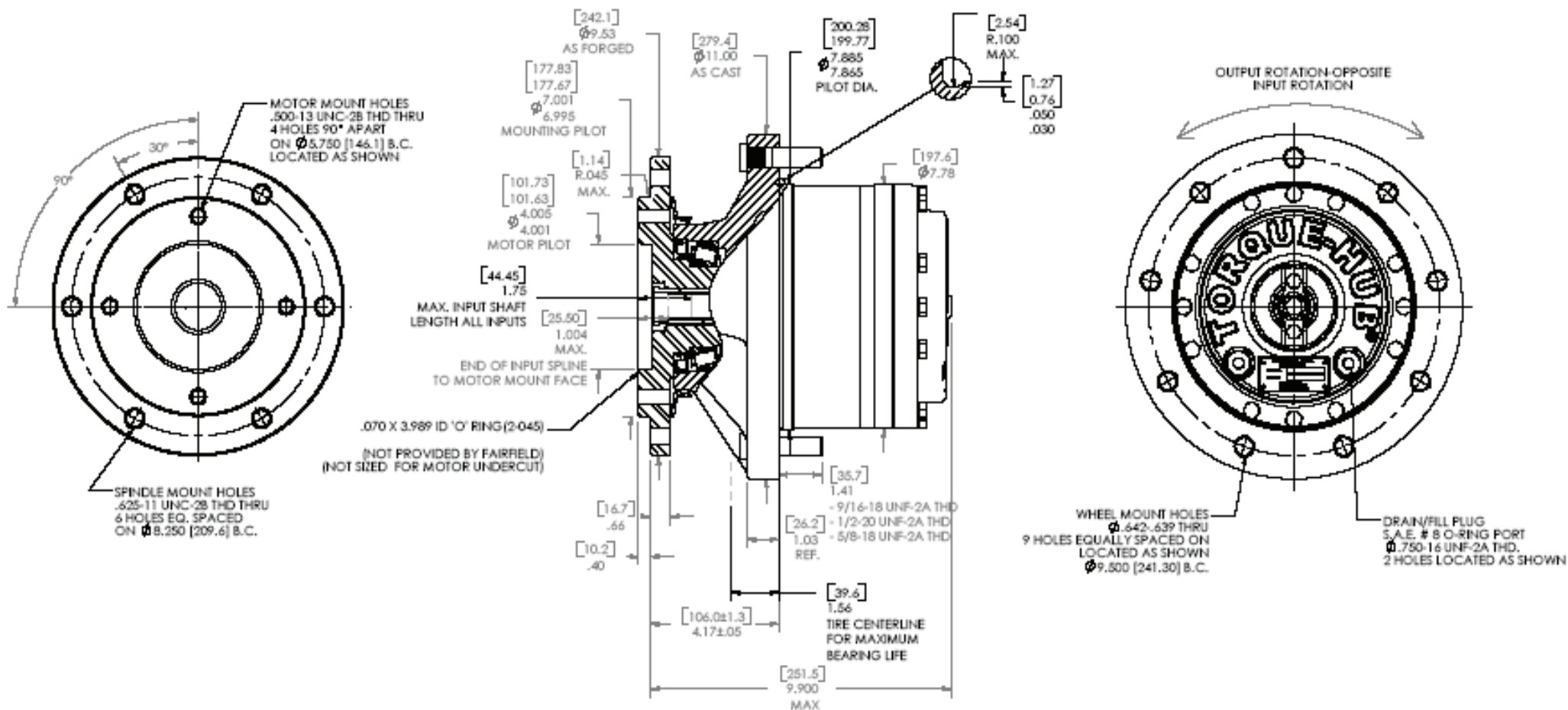


TORQUE-HUB
Planetary Final Drives



oerlikon
fairfield

Catalog prints are representative of the units.
Before final design request a certified print from Fairfield.

NOTE: MM SHOWN IN ()
MOTOR CAVITY DIMENSIONS VARY WITH MODEL

OTHER MODELS ALSO AVAILABLE
FAIRFIELD BRAKE AVAILABLE

Performance Data

Continuous	Intermittent	Peak
15,000 lb-in	30,000 lb-in	40,000 lb-in
1,250 lb-ft	2,500 lb-ft	3,333 lb-ft
1,690 Nm	3,381 Nm	4,508 Nm
172 kg-m	345 kg-m	460 kg-m

For ultimate torque and horsepower capacities, contact a Torque-Hub® representative.

Speed Limitations

Input Speed: 4,000 RPM Maximum Intermittent
Horsepower: Contact Fairfield

Weight

Approximately 90 lbs (41 kg)

Note: Specific models will change weights.

W1BF Model Formula

Oil

Fill to half full with EP-90 oil on most applications.

Approximate Volume 17 oz. (503 cm³)

Note: Oil level and type will vary with specific model and application.

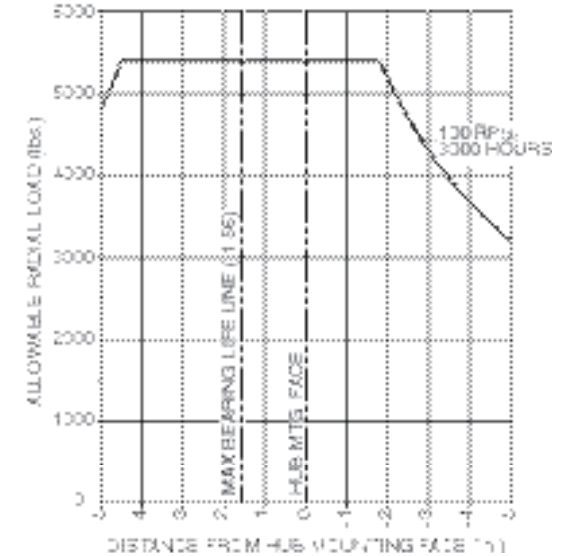
Conditions of Bearing Curve

Life = 3,000 hours B-10
Speed = 100 RPM output

To adjust for loads and speeds other than shown on curve:

$$\text{Adjusted Life (hrs)} = 3,000 \left(\frac{100 \text{ RPM}}{\text{Speed (Adjusted)}} \right)^x \left(\frac{\text{Load (Curve)}}{\text{Load (Adjusted)}} \right)^{10/3}$$

Bearing Curve



W 1 BF F 0 3 24 X

W – Torque-Hub® Wheel Drive

1 – Series

Stud

0 – Not Included
F – 5/8-18 by 2.437 in.
N – 1/2-20 by 2.437 in.

Input

3 – 13T, 16/32 Spline

Seal Boot

0 – Blank
Z – Included

Special Features

X – Antidisenengage (spacer placed in coupling)

Reduction

18 – 18.25:1
24 – 24.85:1
30 – 30.05:1
35 – 35.13:1
40 – 40.25:1
49 – 49.29:1
60 – 59.50:1
68 – 68.00:1

æerlikon
fairfield

Fairfield Manufacturing Company, Inc.
 First in Custom Gears and Drive Systems

www.fairfieldmfg.com

	Spindle				Hub	
	Motor Mount	Flange Mounting Dia.	Motor B.C.	Frame B.C.	Mounting Dia.	Flange B.C.
BF	SAE "B"	<u>7.000</u> 6.995	(4) 1/2-13 5.750 B.C.	(6) 5/8-11 8.250 B.C.	<u>7.885</u> 7.865	(9) .642/.639 thru 9.500 B.C.
BD	SAE "B"	<u>7.000</u> 6.995	(4) 1/2-13 5.750 B.C.	(6) .671/.653 8.250 B.C.	<u>7.885</u> 7.865	(9) .642/.639 thru 9.500 B.C.