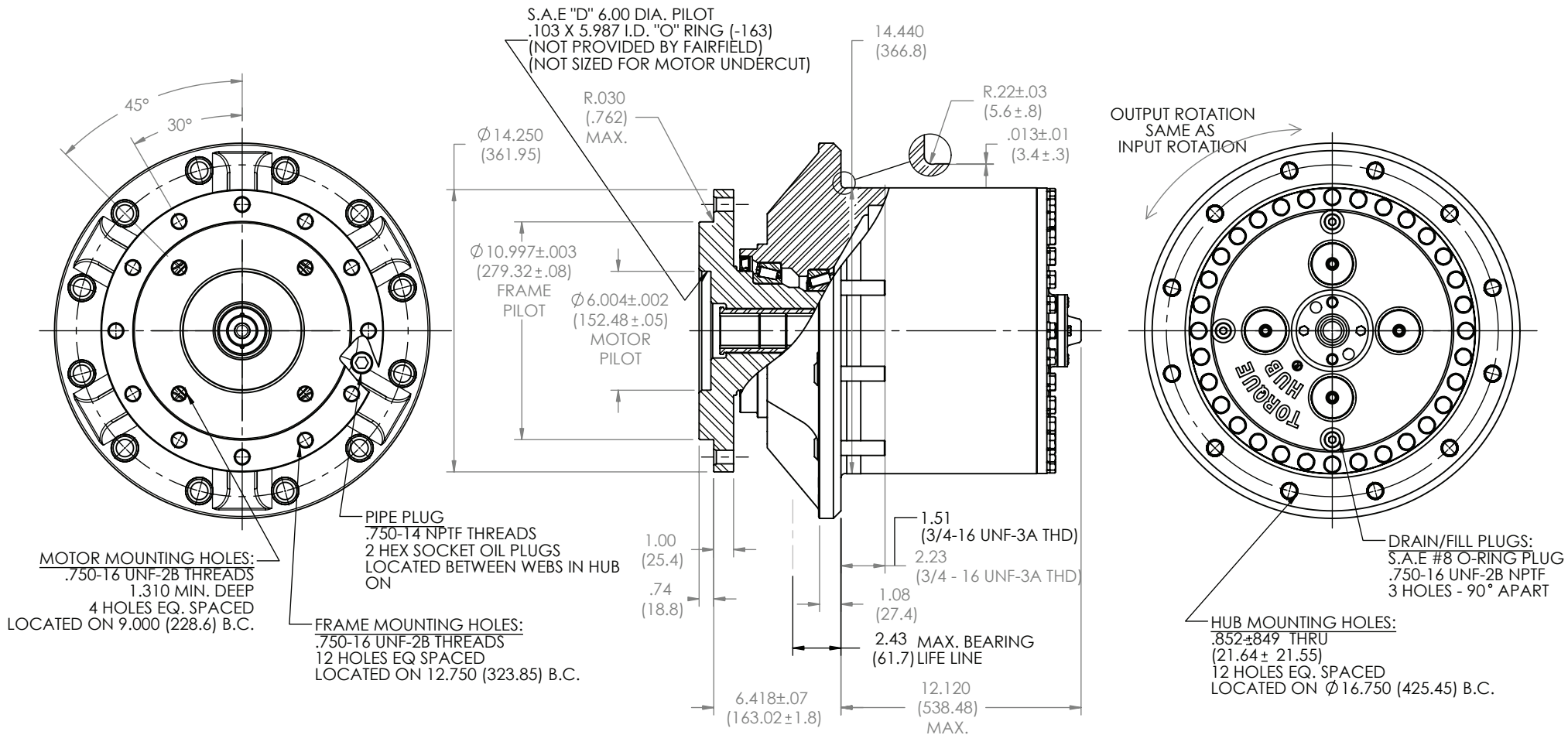


W16D1 Application Sheet

TORQUE-HUB®
Planetary Final Drives



**æerlikon
fairfield**

Catalog prints are representative of the units.
Before final design request a certified print from Fairfield.

NOTE: MM SHOWN IN ()
MOTOR CAVITY DIMENSIONS VARY WITH MODEL

OTHER MODELS ALSO AVAILABLE
FAIRFIELD BRAKE AVAILABLE

W16D1

Performance Data

Continuous	Intermittent	Peak
160,000 in-lbs	320,000 in-lbs	
13,333 ft-lbs	26,667 ft-lbs	Contact Fairfield
18,079 N-m	36,158 N-m	
1,843 kg-m	3,686 kg-m	

For ultimate torque and horsepower capacities, contact a Torque-Hub® representative.

Speed Limitations

Input Speed: 4,000 RPM Maximum Intermittent

Weight

Approximately 500lbs (227kg)

Note: Specific models will change weights.

Model Formula

Oil

Fill to half full with 90 weight gear lube with EP additive on most applications.

Note: Oil level and type will vary with specific model and application.

Conditions of Bearing Curve

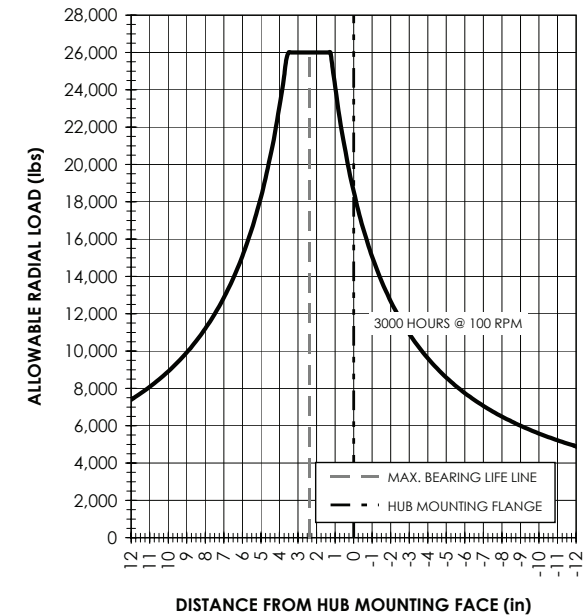
Life = 3,000 hours B10

Speed = 100 RPM output

To adjust for loads and speeds other than shown on curve:

$$\text{Adjusted Life (hrs)} = 3,000 \left(\frac{100 \text{ RPM}}{\text{Speed (Adjusted)}} \right) \left(\frac{\text{Load (Curve)}}{\text{Load (Adjusted)}} \right)^{\left(\frac{10}{3} \right)}$$

Bearing Curve



W 16 D1 1 0 4 40 X

W - Torque-Hub Wheel Drive

16 - Series

Spindle				Hub	
Motor Mount	Flange Mounting Dia.	Motor B.C.	Frame B.C.	Mounting Dia.	Flange B.C.
D1	SAE "D"	11,000/ 10,994	(4) 3/4-16 9,000 B.C.	(12) 3/4-16 12,750 B.C.	14.44/14.43 (12) .852/.849 16.750 B.C.

Options

0 - Not Included
Z - Seal Boot

Reduction

20 - 20.3
29 - 29.2
40 - 39.4

Disengage Option

X - Anti-disengage spacer

Studs in Wheel Flange

0 - Not Included
1 - 3/4-16 x 2 17/32
8 - 3/4-16 x 3 1/4

Input

5 - 13T, 8/16 Spline

oerlikon
fairfield

Fairfield Manufacturing Company, Inc.

First in Custom Gears and Drive Systems

www.fairfieldmfg.com