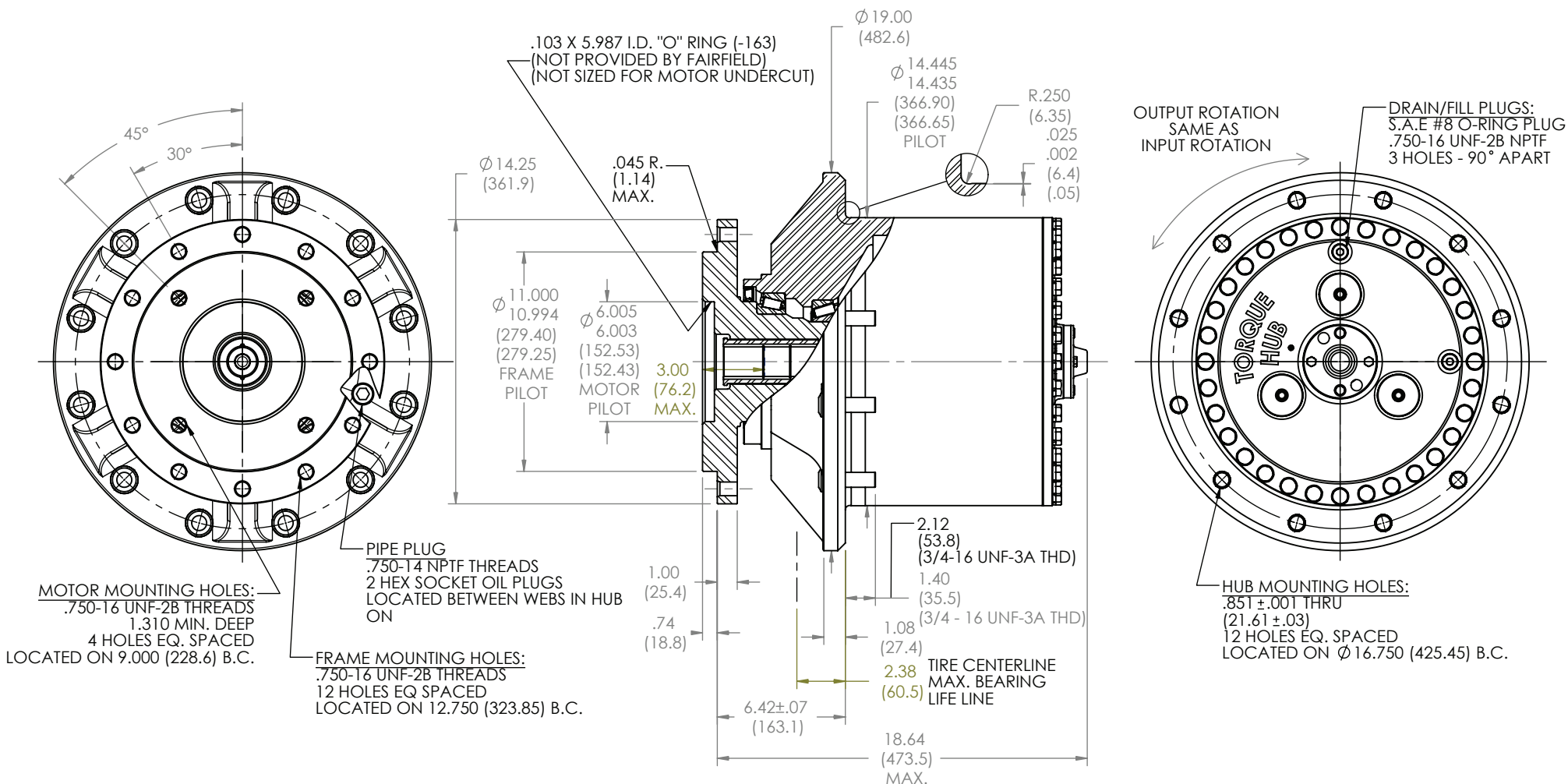


TORQUE-HUB
Planetary Final Drives



æerlikon
fairfield

Catalog prints are representative of the units.
Before final design request a certified print from Fairfield.

NOTE: MM SHOWN IN ()
MOTOR CAVITY DIMENSIONS VARY WITH MODEL

OTHER MODELS ALSO AVAILABLE
FAIRFIELD BRAKE AVAILABLE

W12D4

Performance Data

| Continuous | Intermittent | Peak |
|---------------|---------------|---------------|
| 125,000 lb-in | 250,000 lb-in | 300,000 lb-in |
| 10,417 lb-ft | 20,833 lb-ft | 25,000 lb-ft |
| 14,113 Nm | 28,227 Nm | 33,900 Nm |
| 1,440 kg-m | 2,880 kg-m | 3,450 kg-m |

For ultimate torque and horsepower capacities, contact a Torque-Hub® representative.

Speed Limitations

Input Speed: 5,000 RPM Maximum Intermittent

Weight

Approximately 474 lbs (213 kg)

Note: Specific models will change weights.

W12D4 Model Formula

Oil

Fill to half full with 90 weight gear lube with EP additive on most applications.

Approximate Volume 128 oz. (3,787 cm³)

Note: Oil level and type will vary with specific model and application.

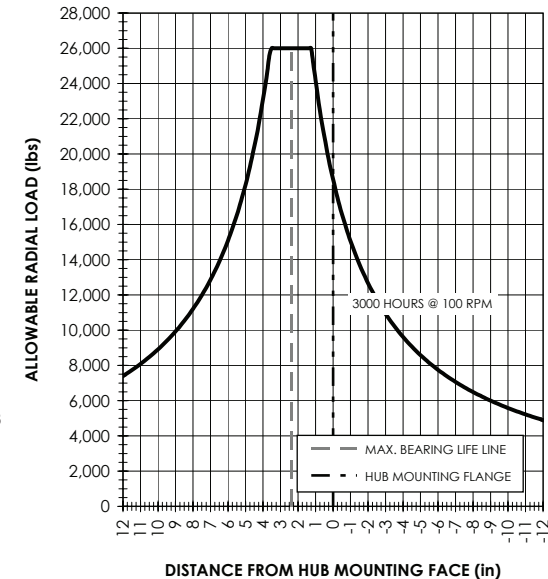
Conditions of Bearing Curve

Life = 3,000 hours B-10
Speed = 100 RPM output

To adjust for loads and speeds other than shown on curve:

$$\text{Adjusted Life (hrs)} = 3,000 \left(\frac{100 \text{ RPM}}{\text{Speed (Adjusted)}} \right) \times \left(\frac{\text{Load (Curve)}}{\text{Load (Adjusted)}} \right)^{10/3}$$

Bearing Curve



W 12 D4 1 0 5 40

W – Torque-Hub® Wheel Drive

12 – Series

| | | Spindle | | Hub | | |
|-----------|-------------|-------------------------|--------------------------|----------------------------|-----------------------|-------------------------------|
| | Motor Mount | Flange Mounting Dia. | Motor B.C. | Frame B.C. | Mounting Dia. | Flange B.C. |
| D4 | SAE "D" | $\frac{11.000}{10.994}$ | (4) 3/4-16 9.000 B.C. | (12) 3/4-16 12.750 B.C. | $\frac{14.44}{14.43}$ | (12) .852/.849 16.750 B.C. |

Reduction

20 –20.3:1
29 –29.2:1
40 –39.4:1

E – 27T, 16/32 Spline
D –13T, 8/16 Spline with Solid Cover Cap (has spring)

Studs in Wheel Flange

0 – Not Included
1 – 3/4-16 thd. by 2-17/32 in.
8 – 3/4-16 thd. by 3-1/4 in.

Options

0 – Not Included
Z – Seal Boot

æerlikon
fairfield

Fairfield Manufacturing Company, Inc.
First in Custom Gears and Drive Systems

www.fairfieldmfg.com