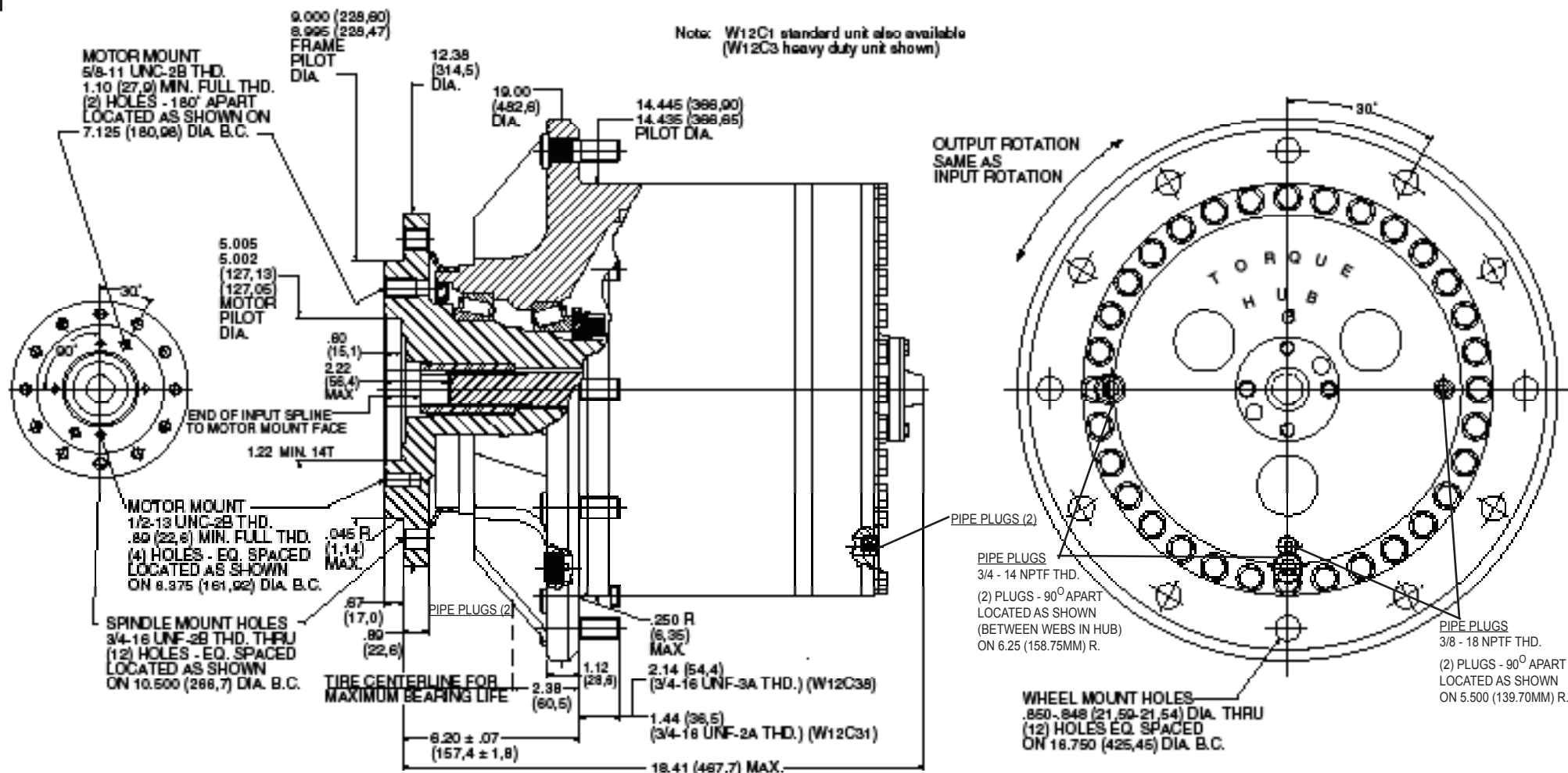


**TORQUE-HUB**  
Planetary Final Drives



**æerlikon**  
**fairfield**

Catalog prints are representative of the units.  
Before final design request a certified print from Fairfield.

NOTE: MM SHOWN IN ( )  
MOTOR CAVITY DIMENSIONS VARY WITH MODEL

OTHER MODELS ALSO AVAILABLE  
FAIRFIELD BRAKE AVAILABLE

## W12C3

### Performance Data

Continuous	Intermittent	Peak
125,000 lb-in	250,000 lb-in	300,000 lb-in
10,417 lb-ft	20,833 lb-ft	25,000 lb-ft
14,113 Nm	28,227 Nm	33,900 Nm
1,440 kg-m	2,880 kg-m	3,450 kg-m

For ultimate torque and horsepower capacities, contact a Torque-Hub® representative.

### Speed Limitations

**Input Speed:** 5,000 RPM Maximum Intermittent

### Weight

Approximately 474 lbs (213 kg)

Note: Specific models will change weights.

### W12C3 Model Formula

### Oil

Fill to half full with 90 weight gear lube with EP additive on most applications.

**Approximate Volume** 128 oz. (3,787 cm<sup>3</sup>)

Note: Oil level and type will vary with specific model and application.

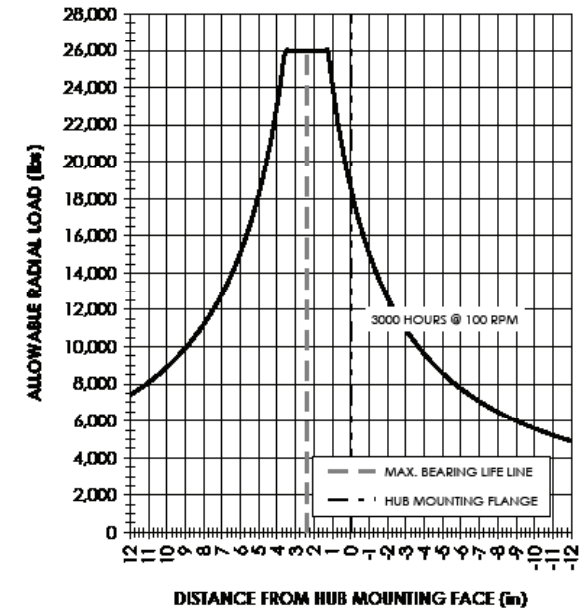
### Conditions of Bearing Curve

**Life** = 3,000 hours B-10  
**Speed** = 100 RPM output

To adjust for loads and speeds other than shown on curve:

$$\text{Adjusted Life (hrs)} = 3,000 \left( \frac{100 \text{ RPM}}{\text{Speed (Adjusted)}} \right) \times \left( \frac{\text{Load (Curve)}}{\text{Load (Adjusted)}} \right)^{10/3}$$

### Bearing Curve



**W 12 C3 1 0 4 40**

**W** – Torque-Hub® Wheel Drive

**12** – Series

		Spindle		Hub		
	Motor Mount	Flange Mounting Dia.	Motor B.C.	Frame B.C.	Mounting Dia.	Flange B.C.
C3	SAE "C"	$\frac{9.000}{8.995}$	(2) 5/8-11 7.125 B.C.	(12) 3/4-16 10.500 B.C.	$\frac{14.44}{14.43}$	(12) .852/.849 16.750 B.C.

S.A.E. "D" model also available. See Page 60.

**æerlikon**  
**fairfield**

Fairfield Manufacturing Company, Inc.  
First in Custom Gears and Drive Systems

www.fairfieldmfg.com

**Studs in Wheel Flange**

- 0 – Not Included
- 1 – 3/4-16 thd. by 2-17/32 in.
- 8 – 3/4-16 thd. by 3-1/4 in.

**Options**

- 0 – Not Included
- Z – Seal Boot

**Reduction**

- 20 – 20.3:1
- 29 – 29.2:1
- 40 – 39.4:1

**Input**

- 4 – 14T, 12/24 Spline
- C – 14T, 12/24 with Solid Cover Cap (has spring)