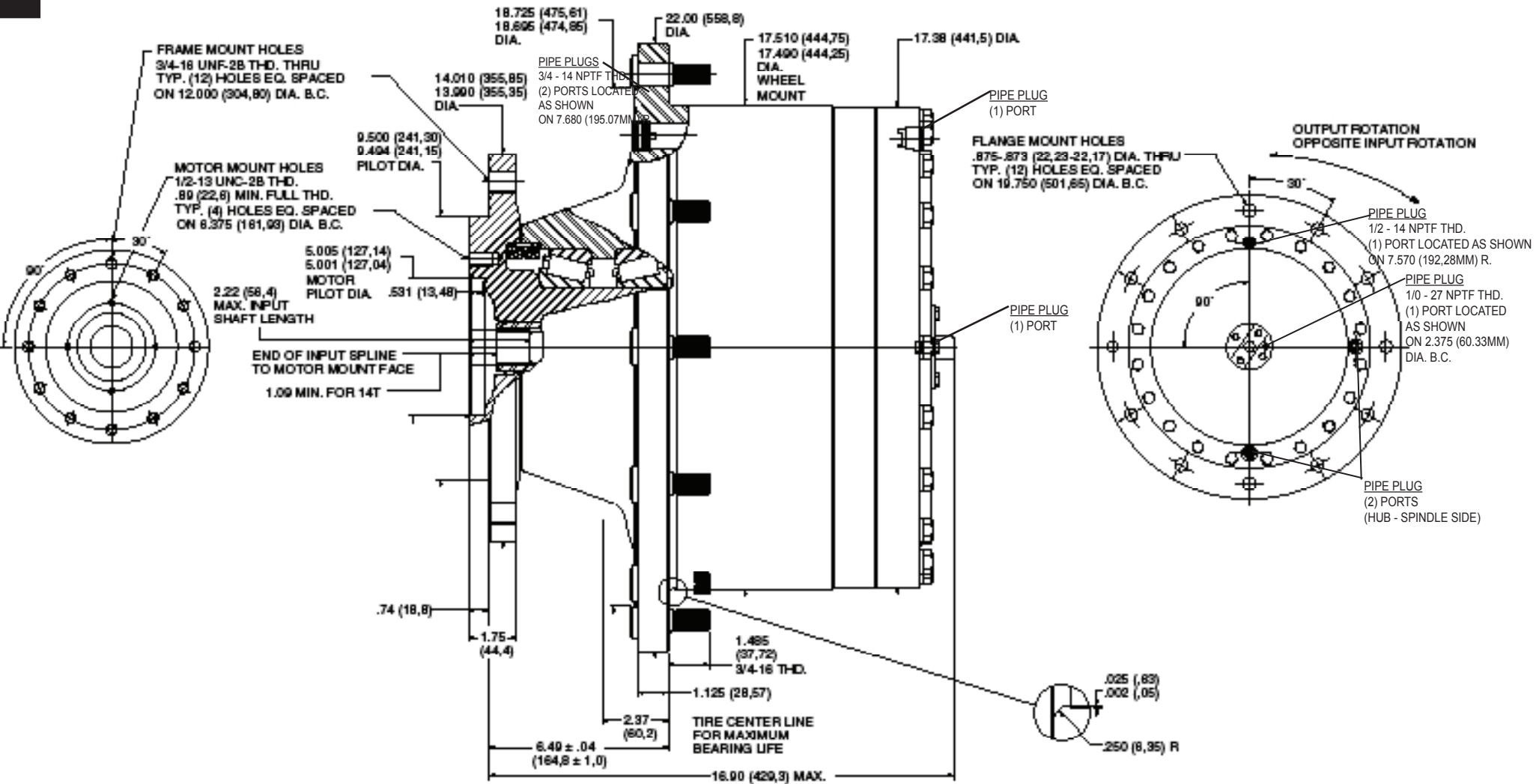


W10C2 Application Sheet

TORQUE-HUB®
Planetary Final Drives



æerlikon
fairfield

Catalog prints are representative of the units.
Before final design request a certified print from Fairfield.

NOTE: MM SHOWN IN ()
MOTOR CAVITY DIMENSIONS VARY WITH MODEL

OTHER MODELS ALSO AVAILABLE
FAIRFIELD BRAKE AVAILABLE

W10C2

Performance Data

Continuous	Intermittent	Peak
125,000 lb-in	250,000 lb-in	300,000 lb-in
10,417 lb-ft	20,833 lb-ft	25,000 lb-ft
14,113 Nm	28,227 Nm	33,900 Nm
1,440 kg-m	2,880 kg-m	3,450 kg-m

For ultimate torque and horsepower capacities, contact a Torque-Hub® representative.

Speed Limitations

Input Speed: 1,500-1,800 RPM Maximum Intermittent

(Contact Fairfield for specific speed information.)

Weight

Approximately 715 lbs (322 kg)

Note: Specific models will change weights.

W10C2 Model Formula

Oil

Fill to half full with 90 weight gear lube with EP additive on most applications.

Approximate Volume 180 oz.(5,325 cm³)

Note: Oil level and type will vary with specific model and application.

Conditions of Bearing Curve

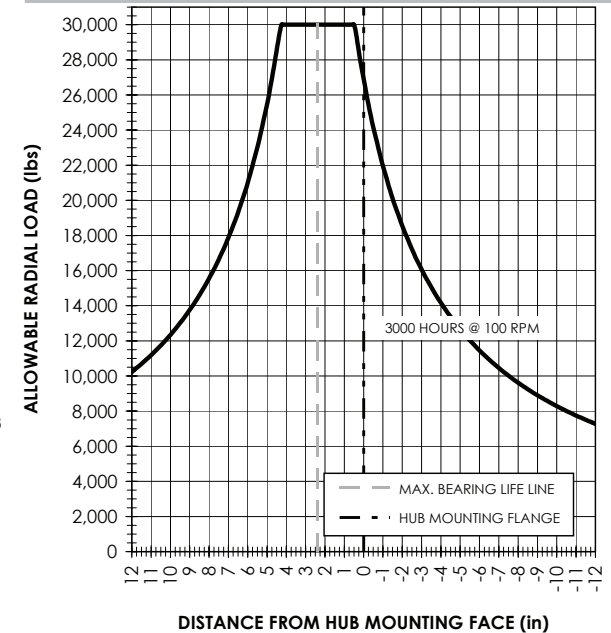
Life = 3,000 hours B-10

Speed = 100 RPM output

To adjust for loads and speeds other than shown on curve:

$$\text{Adjusted Life (hrs)} = 3,000 \left(\frac{100 \text{ RPM}}{\text{Speed (Adjusted)}} \right) \times \left(\frac{\text{Load (Curve)}}{\text{Load (Adjusted)}} \right)^{10/3}$$

Bearing Curve



W 10 C2 5 0 4 98 X

W – Torque-Hub® Wheel Drive

10 – Series

	Spindle			Hub		
	Motor Mount	Flange Mounting Dia.	Motor B.C.	Frame B.C.	Mounting Dia.	Flange B.C.
C2	SAE "C"	14.010 13.990	(4) 1/2-13 6.375 B.C.	(12) 3/4-16 12.000 B.C.	17.510 17.490	(12) .875/.873 19.750 B.C.

SAE 'D' model also available. Please contact Fairfield.

æerlikon
fairfield

Fairfield Manufacturing Company, Inc.

First in Custom Gears and Drive Systems

www.fairfieldmfg.com

Studs in Wheel Flange

0 – Not Included
5 – 3/4 - 16 thd by 2.625 in

Input

4 – 14 T, 12/24 Spline
5 – 13 T, 8/16 Spline

Options

0 – Not Available

Special Features

X – Coupling Subassembly with Antidisengage Spacer

Reduction

43 – 43.8:1
58 – 57.4:1*
69 – 69.7:1
80 – 80.3:1
98 – 98.0:1*
123 – 123.2:1

*Available in 14T Input only.