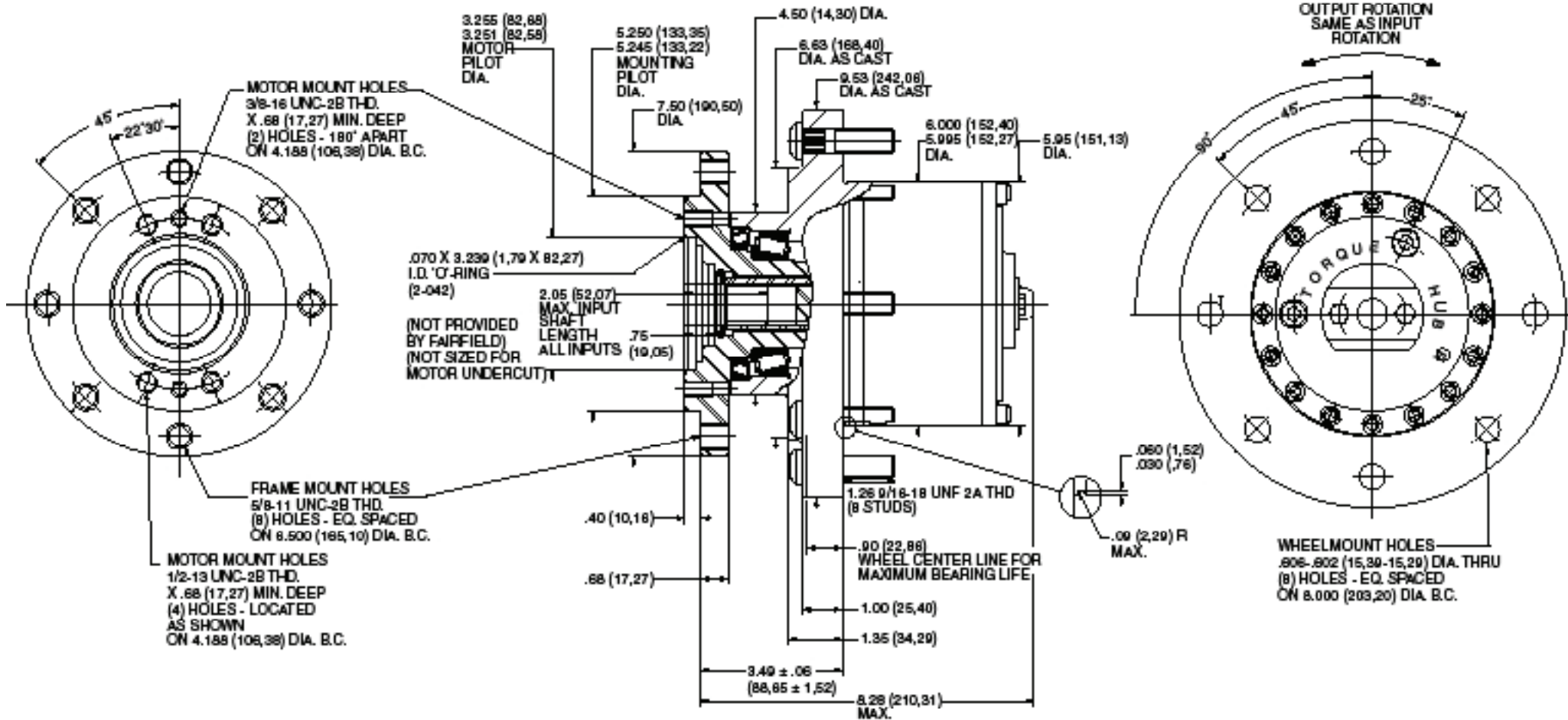


**TORQUE-HUB**  
Planetary Final Drives



**oerlikon**  
**fairfield**

Catalog prints are representative of the units.  
Before final design request a certified print from Fairfield.

NOTE: MM SHOWN IN ( )  
MOTOR CAVITY DIMENSIONS VARY WITH MODEL

OTHER MODELS ALSO AVAILABLE  
FAIRFIELD BRAKE AVAILABLE

## W07A

### Performance Data

Continuous	Intermittent	Peak
7,500 lb-in	15,000 lb-in	20,000 lb-in
625 lb-ft	1,250 lb-ft	1,666.7 lb-ft
845 Nm	1,690 Nm	2,260 Nm
86 kg-m	172 kg-m	230 kg-m

For ultimate torque and horsepower capacities, contact a Torque-Hub® representative.

### Speed Limitations

Input Speed: 1500 RPM Maximum Intermittent

### Weight

Approximately 55 lbs (25 kg)

Note: Specific models will change weights.

### W07A Model Formula

**W** – Torque-Hub® Wheel Drive

**07** – Series

		Spindle		Hub		
	Motor Mount	Flange Mounting Dia.	Motor B.C.	Frame B.C.	Mounting Dia.	Flange B.C.
A3	SAE "A"	5.250 5.240	(4) 1/2-13 4.188 B.C.	(8) 5/8-11 6.500 B.C.	6.000 5.995	(8) .606/.602 8.00 B.C.

S.A.E. "B" Pilot also available. Please contact Fairfield.

**æerlikon**  
**fairfield**

Fairfield Manufacturing Company, Inc.  
First in Custom Gears and Drive Systems

www.fairfieldmfg.com

### Oil

Fill to half full with 90 weight gear lube with EP additive on most applications.

Approximate Volume 10 oz. (296 cm<sup>3</sup>)

Note: Oil level and type will vary with specific model and application.

### Conditions of Bearing Curve

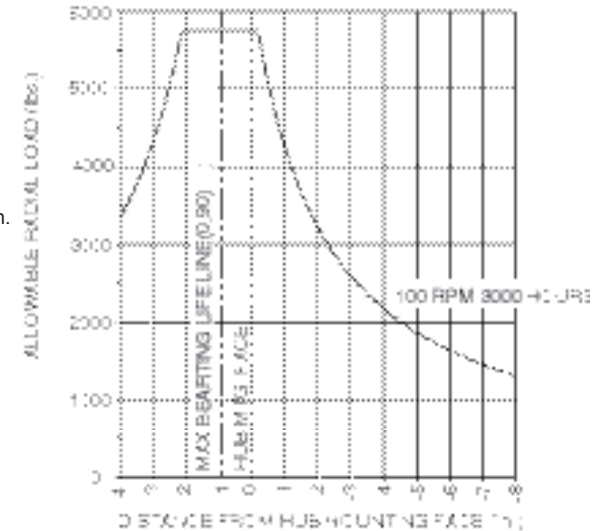
Life = 3,000 hours B-10

Speed = 100 RPM output

To adjust for loads and speeds other than shown on curve:

$$\text{Adjusted Life (hrs)} = 3,000 \left( \frac{100 \text{ RPM}}{\text{Speed (Adjusted)}} \right) \left( \frac{\text{Load (Curve)}}{\text{Load (Adjusted)}} \right)^{\frac{10}{3}}$$

### Bearing Curve



**W 07 A3 G O 6 4 -**

**Special Features**  
O – Not Included

**Ratio**  
4 – 4.105:1

**Special Features**

**Wheel Stud Configuration**  
0 – Not Included  
G – 9/16 – 18 x 2.27 long  
(use with .606/.602 flange hole for cast iron hub)

**Input Spline**  
6 – 6B Parallel Side Spline  
(major dia. = 1.00 in.)  
3 – 13T, 16/32 Spline  
8 – 15T, 16/32 Spline