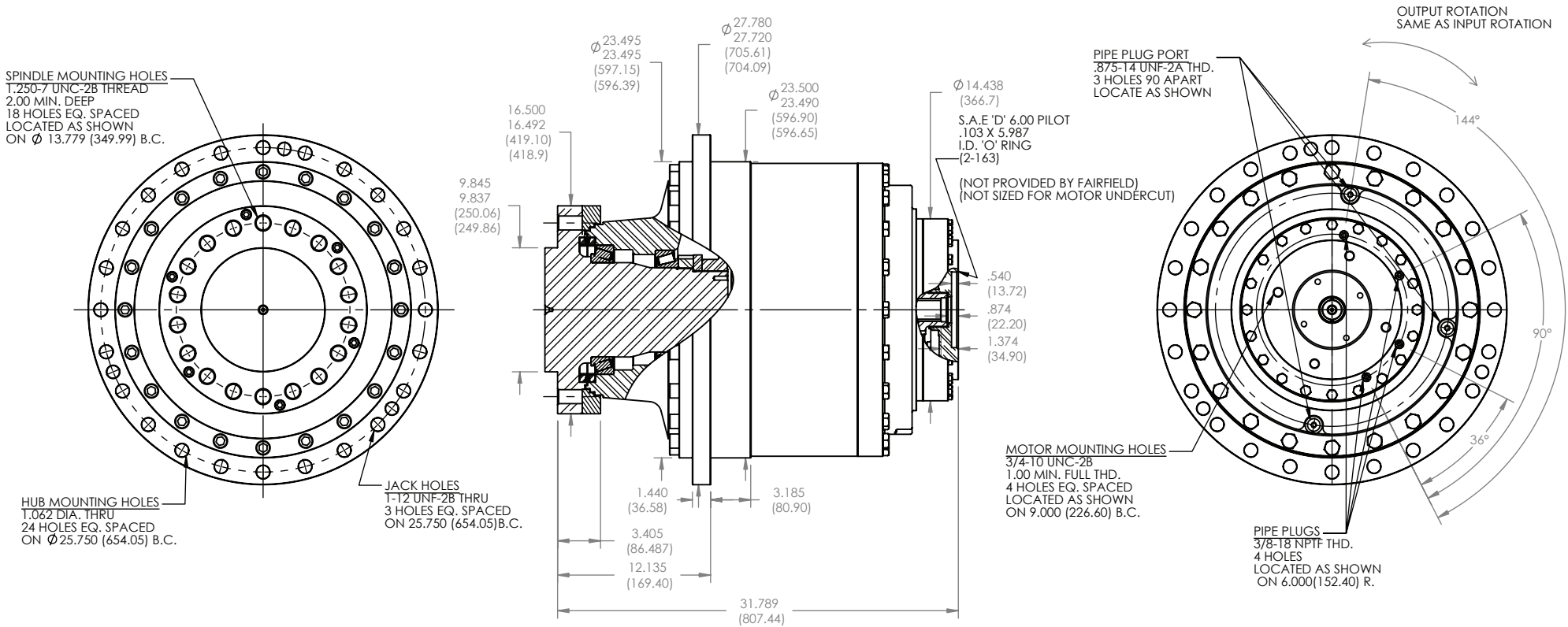


80 Series  
**S80B2**  
 Application Sheet

**TORQUE-HUB®**  
 Planetary Final Drives



Catalog prints are representative of the units.  
 Before final design request a certified print from Fairfield.

NOTE: MM SHOWN IN ( )  
 MOTOR CAVITY DIMENSIONS VARY WITH MODEL

OTHER MODELS ALSO AVAILABLE  
 FAIRFIELD BRAKE AVAILABLE

## S80B2

### Performance Data

Continuous	Intermittent	Peak
800,000 in-lbs	1,600,000 in-lbs	
66,667 ft-lbs	133,333 ft-lbs	Contact Fairfield
90,395 N-m	180,791 N-m	
9,215 kg-m	18,429 kg-m	

For ultimate torque and horsepower capacities, contact a Torque-Hub® representative.

### Speed Limitations

**Input Speed:** 4,000 RPM Maximum Intermittent

### Weight

Approximately **575lbs (261kg)**

Note: Specific models will change weights.

### S80B Model Formula

### Oil

Fill to half full with 90 weight gear lube with EP additive on most applications.

Approximate Volume: 660oz (19,516cc)

Note: Oil level and type will vary with specific model and application.

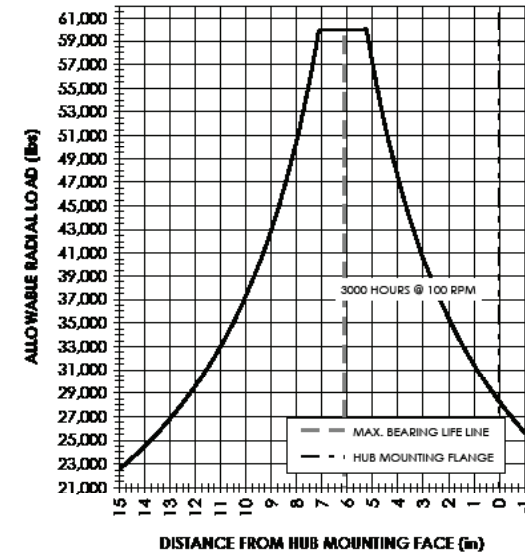
### Conditions of Bearing Curve

**Life = 3,000 hours B10**  
**Speed = 100 RPM output**

To adjust for loads and speeds other than shown on curve:

$$\text{Adjusted Life (hrs)} = 3,000 \left( \frac{100 \text{ RPM}}{\text{Speed (Adjusted)}} \right) \left( \frac{\text{Load (Curve)}}{\text{Load (Adjusted)}} \right)^{\frac{10}{3}}$$

### Bearing Curve



**S 80 B2 0 5 5 134**

### S - Torque-Hub Shaft Output

### 80 - Series

	Spindle		Hub	
	Flange Mounting	B.C.	Mounting Diameter	B.C.
B2	9.845/9.837	(18) 1.25-7 13.779 B.C.	23.500/23.493	(24) 1.072/1.052 25.750 B.C.

Input	Ratio
5 - 13T, 8/16 Spline	36 - 35.63
9 - 15T, 8/16 Spline (144:1 ONLY)	134 - 133.6
L - 19T, 8/16 Spline (36:1 ONLY)	144 - 143.76
	192 - 192.4
	260 - 259.8

### Motor Mount

**5** - SAE "D" (6.005/6.001) Pilot (4 bolt)  
**E** - SAE "E" (6.505/6.501) Pilot (4 bolt)

### Special Features

**0** - Not Included

**oerlikon**  
**fairfield**

Fairfield Manufacturing Company, Inc.

First in Custom Gears and Drive Systems

www.fairfieldmfg.com