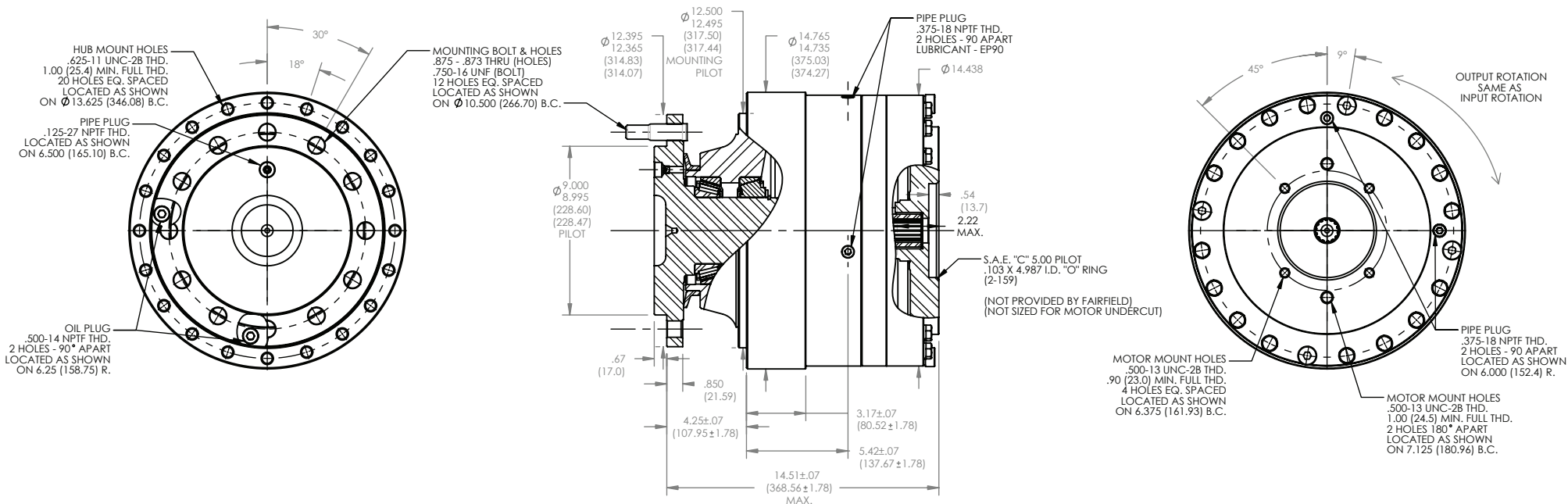


7 Series
S7B2
 Application Sheet

TORQUE-HUB®
 Planetary Final Drives



Catalog prints are representative of the units.
 Before final design request a certified print from Fairfield.

NOTE: MM SHOWN IN ()
 MOTOR CAVITY DIMENSIONS VARY WITH MODEL

OTHER MODELS ALSO AVAILABLE
 FAIRFIELD BRAKE AVAILABLE

S7B2

Performance Data

Continuous	Intermittent	Peak
75,000 lb-in	150,000 lb-in	200,000 lb-in
6,250 lb-ft	12,500 lb-ft	16,667 lb-ft
8,468 Nm	16,936 Nm	22,600 Nm
864 kg-m	1,728 kg-m	2,300 kg-m

For ultimate torque and horsepower capacities, contact a Torque-Hub® representative.

Speed Limitations

Input Speed: 3,000 RPM Maximum Intermittent

Weight

Approximately 435 lbs (198 kg)

Note: Specific models will change weights.

S7B2 Model Formula

Oil

Fill to half full with 90 weight gear lube with EP additive on most applications.

Approximate Volume 85 oz. (2,515 cm³)

Note: Oil level and type will vary with specific model and application.

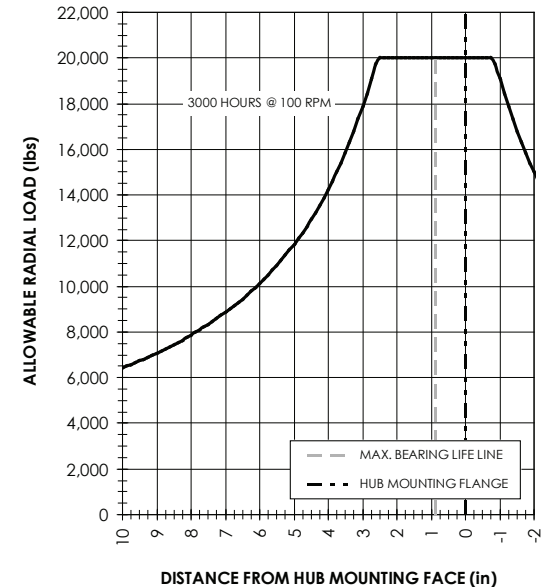
Conditions of Bearing Curve

Life = 3,000 hours B-10
Speed = 100 RPM output

To adjust for loads and speeds other than shown on curve:

$$\text{Adjusted Life (hrs)} = 3,000 \left(\frac{100 \text{ RPM}}{\text{Speed (Adjusted)}} \right) \times \left(\frac{\text{Load (Curve)}}{\text{Load (Adjusted)}} \right)^{10/3}$$

Bearing Curve



S 7 B 2 A Z 4 4 9 5

S – Torque-Hub® Spindle Output

7 – Series

	Spindle		Hub	
	Flange Mounting Dia.	B.C.	Mounting Dia.	B.C.
B2	9.000 8.997	(12) .875/.873 10.500 B.C.	12.500 12.495	(20) 5/8-11 13.625 B.C.

oerlikon
fairfield
Fairfield Manufacturing Company, Inc.
First in Custom Gears and Drive Systems
www.fairfieldmfg.com

Studs

0 – Not Included
A – 3/4-16 by 3.03 Inch (use with .875/.873 Flange Hole on Steel Spindle)

Special Feature

0 – Not Included
Z – Seal Boot

Input Cover Side
4 – 14T, 12/24 Spline

Motor Mount on Cover
4 – S.A.E. “C” (5.005/ 5.001) Pilot 2 & 4 Bolt

Reduction
27 – 27.4:1
45 – 45.2:1
59 – 58.8:1
73 – 72.5:1
95 – 94.7:1