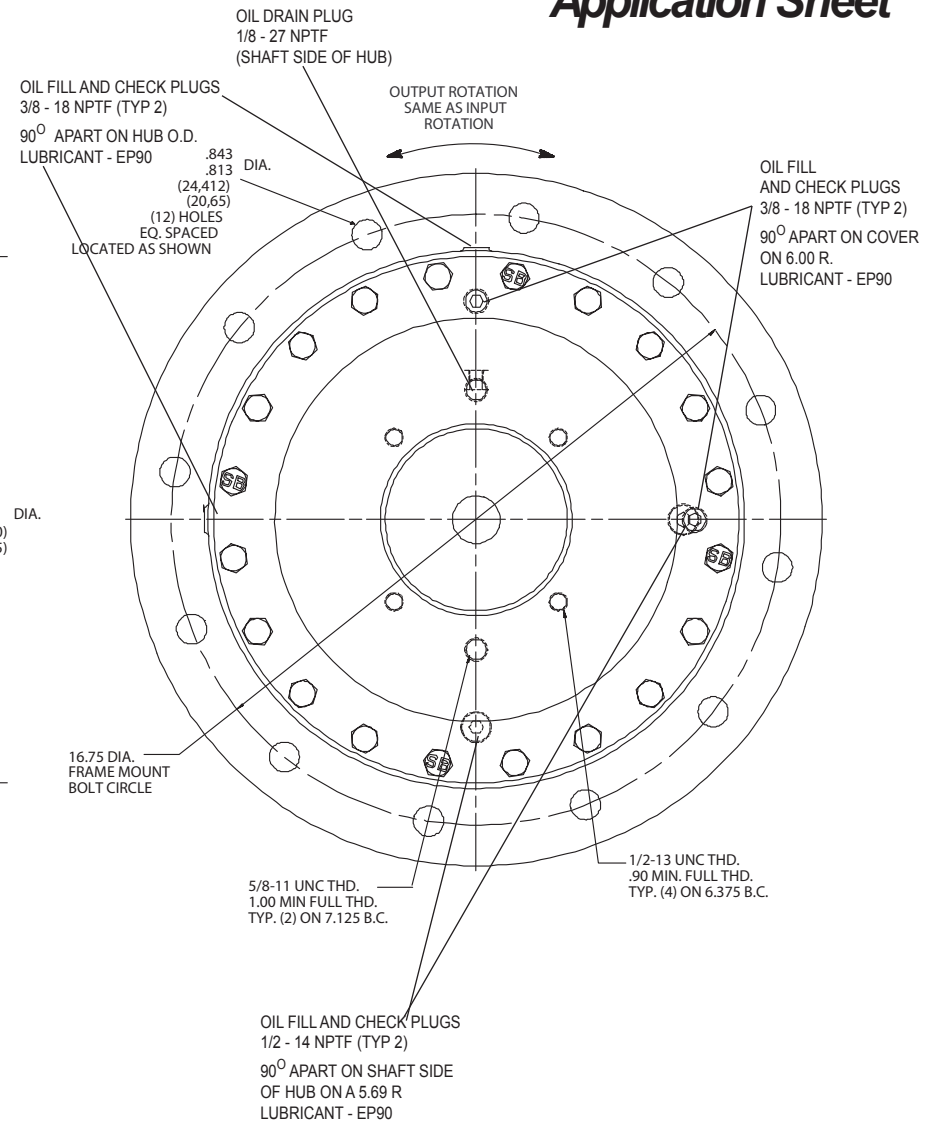
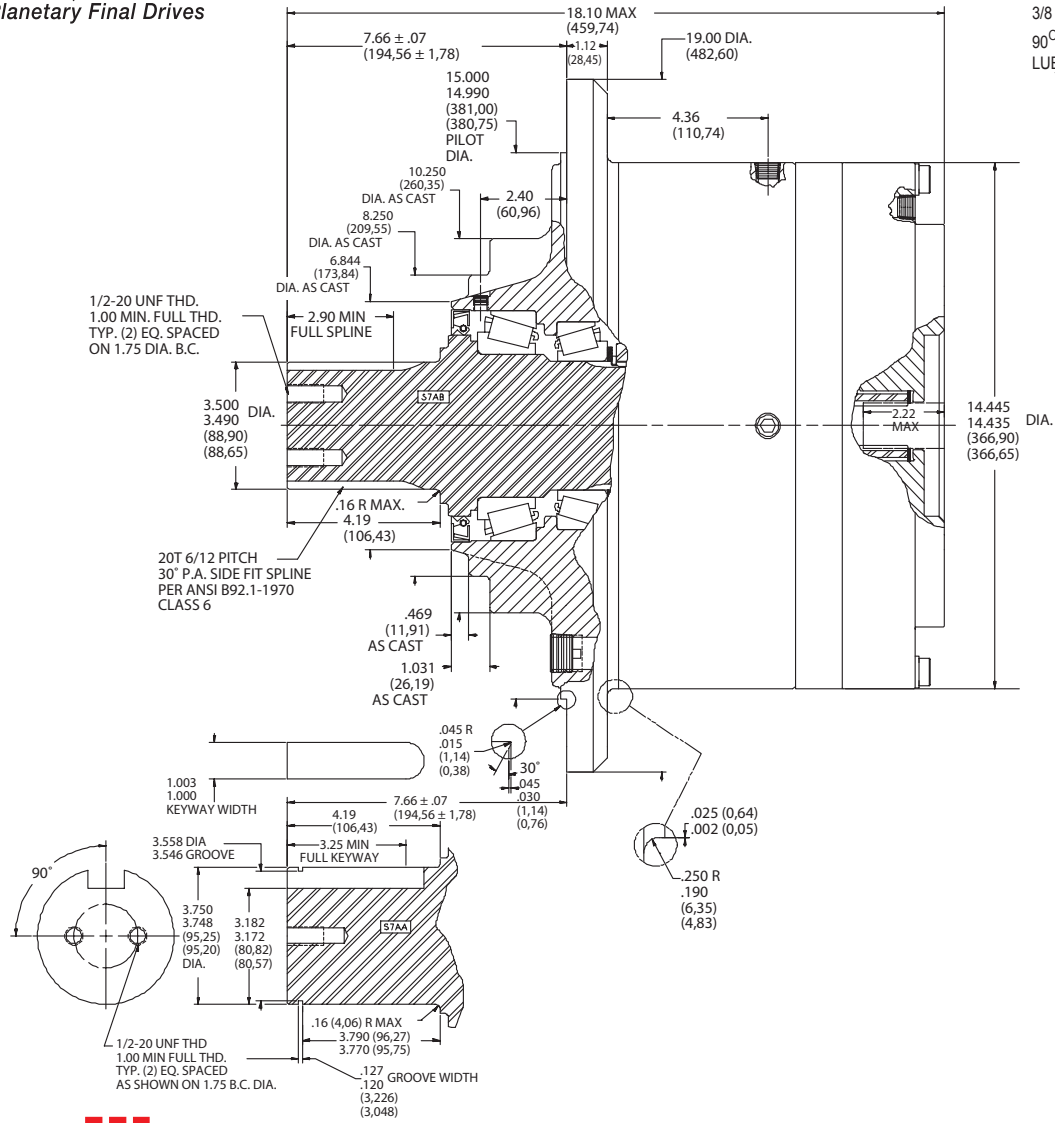


S7AB Application Sheet

TORQUE-HUB® Planetary Final Drives



Catalog prints are representative of the units.
Before final design request a certified print from Fairfield.

NOTE: MM SHOWN IN ()
MOTOR CAVITY DIMENSIONS VARY WITH MODEL

OTHER MODELS ALSO AVAILABLE
FAIRFIELD BRAKE AVAILABLE

S7AB

Performance Data

Continuous	Intermittent	Peak
75,000 lb-in	150,000 lb-in	200,000 lb-in
6,250 lb-ft	12,500 lb-ft	16,667 lb-ft
8,468 Nm	16,936 Nm	22,600 Nm
864 kg-m	1,728 kg-m	2,300 kg-m

For ultimate torque and horsepower capacities, contact a Torque-Hub® representative.

Speed Limitations

Input Speed: 3,000 RPM Maximum Intermittent

Weight

Approximately 430 lbs. (194 kg)

Note: Specific models will change weights.

S7AB Model Formula

S – Torque-Hub® Shaft Output

7 – Series

Oil

Fill to half full with 90 weight gear lube with EP additive on most applications.

Approximate Volume 85 oz. (2,515 cm³)

Note: Oil level and type will vary with specific model and application.

Conditions of Bearing Curve

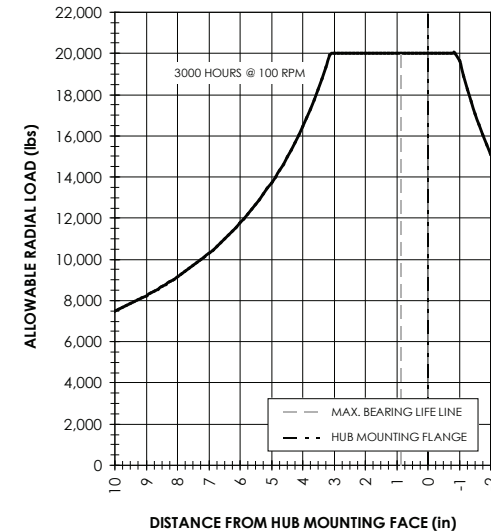
Life = 3,000 hours B-10

Speed = 100 RPM output

To adjust for loads and speeds other than shown on curve:

$$\text{Adjusted Life (hrs)} = 3,000 \left(\frac{100 \text{ RPM}}{\text{Speed (Adjusted)}} \right) \times \left(\frac{\text{Load (Curve)}}{\text{Load (Adjusted)}} \right)^{10/3}$$

Bearing Curve



S 7 AB 4 4 95

Reduction

- 27 – 27.4:1
- 45 – 45.2:1
- 59 – 58.8:1
- 73 – 72.5:1
- 95 – 94.7:1

Input

4 – 14T, 12/24 Spline

Motor Mount

4 – S.A.E. "C" (5.005/5.001) Pilot
[2 & 4 bolt]

	Shaft	Hub	
	Configuration	Hub Flange Thickness	Flange B.C.
AA	3.75" Dia. 1" Keyway	1.12"	(12) .843/.813 Holes 16.75 Dia. B.C.
AB	3.500" Dia. 20T, 6/12 Spline	1.12"	(12) .843/.813 Holes 16.75 Dia. B.C.

æerlikon
fairfield

Fairfield Manufacturing Company, Inc.
First in Custom Gears and Drive Systems

www.fairfieldmfg.com