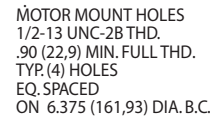
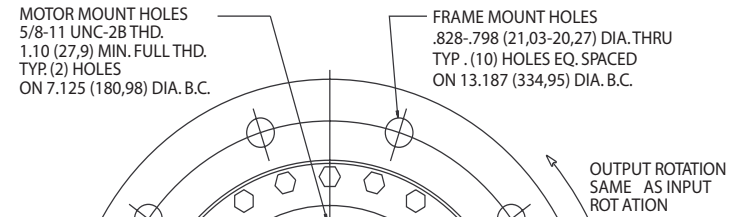
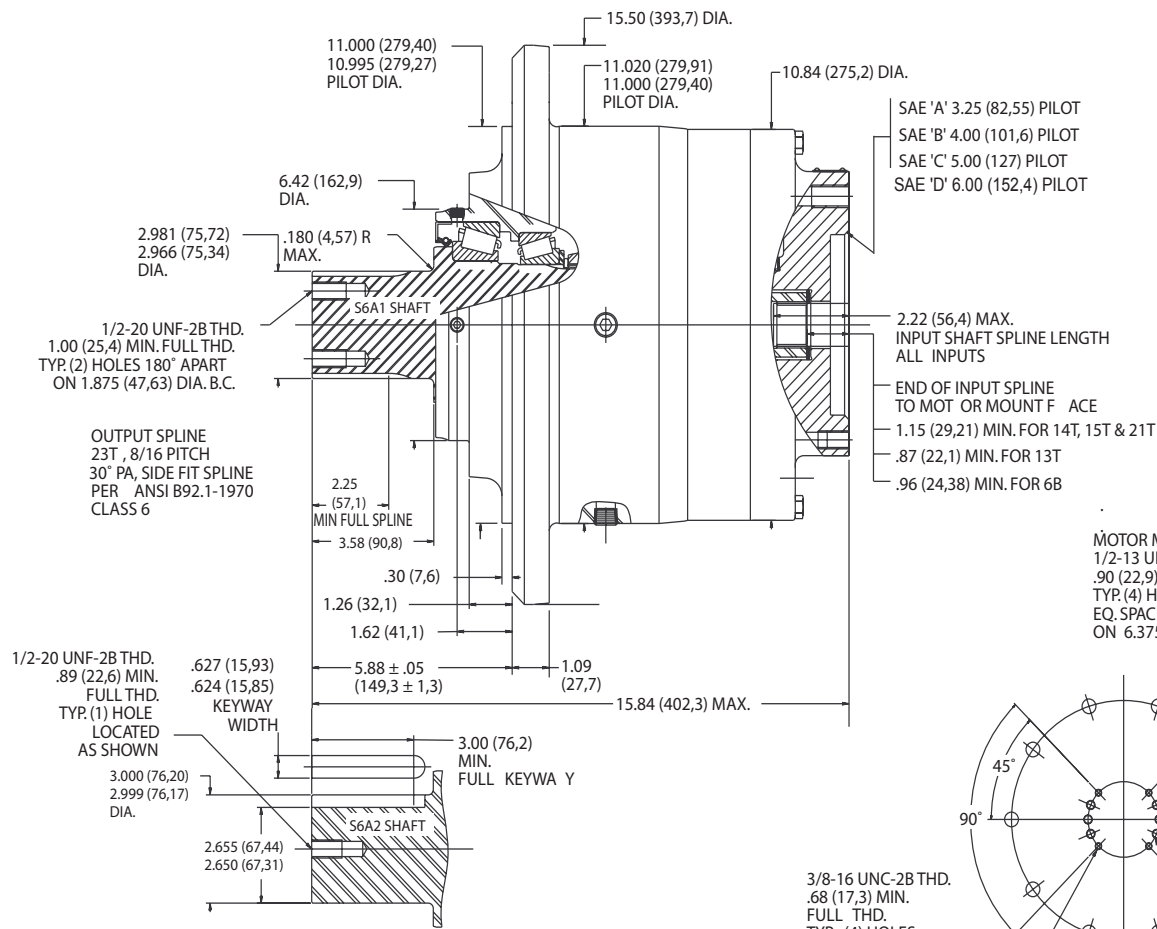
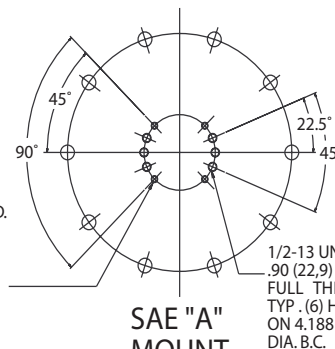


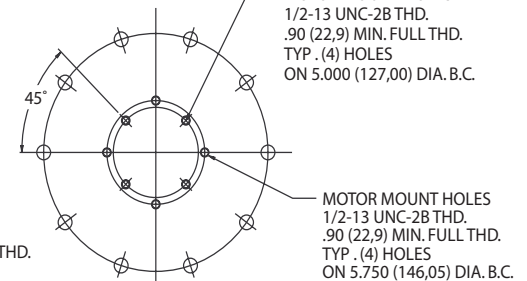
TORQUE-HUB
Planetary Final Drives



SAE "C" MOUNT



SAE "A" MOUNT



SAE "B" MOUNT

MOTOR MOUNT HOLES IN RELATION TO FRAME MOUNT HOLES

S6A

Performance Data

Continuous	Intermittent	Peak
60,000 lb-in	120,000 lb-in	150,000 lb-in
5,000 lb-ft	10,000 lb-ft	12,500 lb-ft
6,779 Nm	13,558 Nm	16,950 Nm
691 kg-m	1,382 kg-m	1,725 kg-m

For ultimate torque and horsepower capacities, contact a Torque-Hub® representative.

Speed Limitations

Input Speed: 5,000 RPM Maximum Intermittent

Weight

Approximately 242 lbs (109 kg)

Note: Specific models will change weights.

S6A1 Model Formula

Oil

Fill to half full with 90 weight gear lube with EP additive on most applications.

Approximate Volume 75 oz.

Note: Oil level and type will vary with specific model and application.

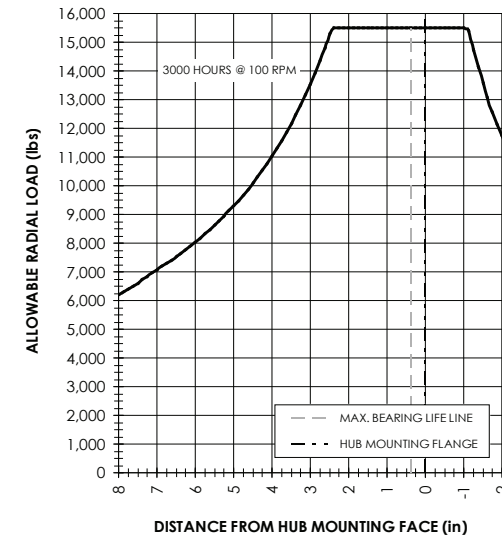
Conditions of Bearing Curve

Life = 3,000 hours B-10
Speed = 100 RPM output

To adjust for loads and speeds other than shown on curve:

$$\text{Adjusted Life (hrs)} = 3,000 \left(\frac{100 \text{ RPM}}{\text{Speed (Adjusted)}} \right) \left(\frac{\text{Load (Curve)}}{\text{Load (Adjusted)}} \right)^{\frac{10}{3}}$$

Bearing Curve



S 6 A1 4 4 32

S – Torque-Hub® Shaft Output

6 – Series

	Spindle		Hub	
	Configuration	Hub Flange Thickness	Flange B.C.	
A1	2.981" Dia. 23T, 8/16 Spine	1.09	(10) .828/.798 Holes 13.187 Dia. B.C.	
A2	3.00" Dia. 5/8" Keyway	1.09	(10) .828/.798 Holes 13.187 Dia. B.C.	

Input

3 – 13T, 16/32 Spline
4 – 14T, 12/24 Spline
5 – 13T 8/16 Spine
6 – 6B Parallel Side Spline
Major Dia.: 1.00 in.
8 – 15T, 16/32 Spline

Reduction

13 – 13.07:1
16 – 15.26:1
19 – 19.04:1
26 – 25.96:1
32 – 32.31:1
(Special 42:1 Ratio Available in Specific Configurations - Contact Fairfield)

Motor Mount

2 – S.A.E. "A" (3.255/3.251) Pilot (4 & 6 Bolt)
3 – S.A.E. "B" (4.005/4.001) Pilot (2 & 4 Bolt)
4 – S.A.E. "C" (5.005/5.001) Pilot (2 & 4 Bolt)
5 – S.A.E. "D" (6.005/6.001) Pilot (2 & 4 Bolt)

æerlikon
fairfield

Fairfield Manufacturing Company, Inc.

First in Custom Gears and Drive Systems

www.fairfieldmfg.com