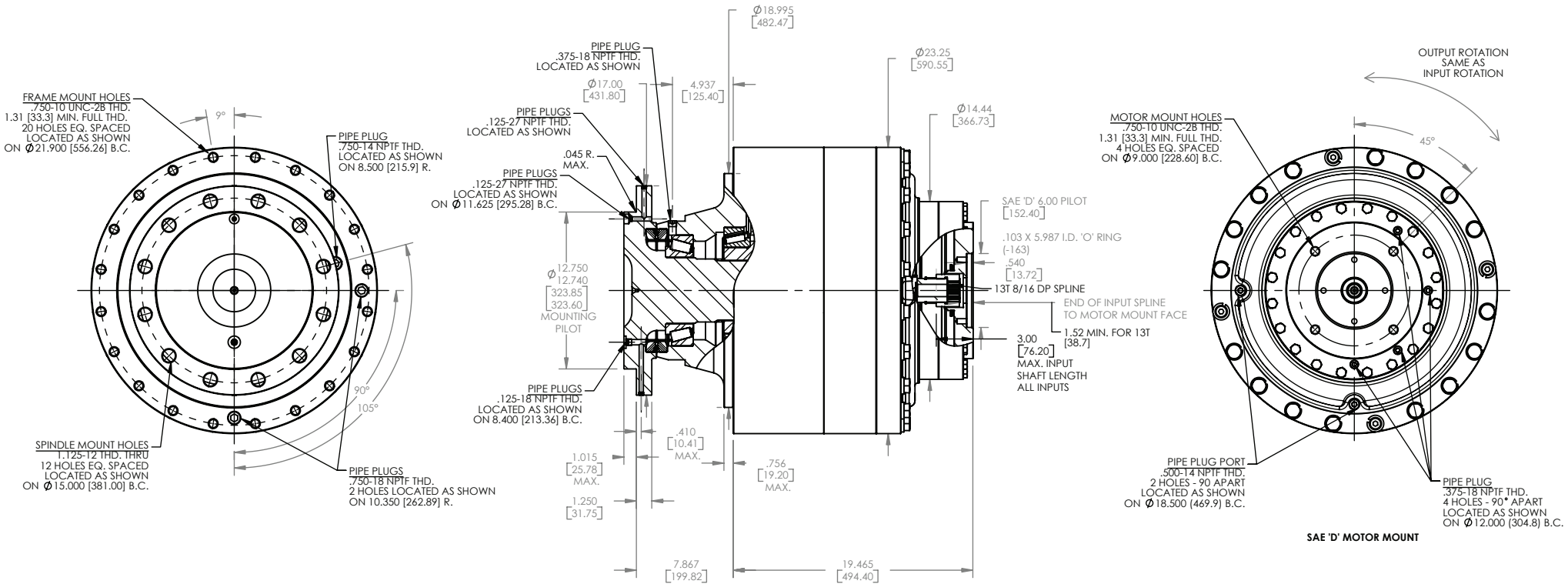


Series  
**S50B1 (T)**  
 Application Sheet

**TORQUE-HUB®**  
 Planetary Final Drives



**oerlikon**  
 fairfield

Catalog prints are representative of the units.  
 Before final design request a certified print from Fairfield.

NOTE: MM SHOWN IN ( )  
 MOTOR CAVITY DIMENSIONS VARY WITH MODEL

OTHER MODELS ALSO AVAILABLE  
 FAIRFIELD BRAKE AVAILABLE

## S50B1 (T)

### Performance Data

Continuous	Intermittent	Peak
500,000 lb-in	1,000,000 lb-in	1,250,000 lb-in
41,667 lb-ft	83,333 lb-ft	104,167 ft-lb
56,453 Nm	112,906 Nm	141,250 Nm
5,760 kg-m	11,520 kg-m	14,375 kg-m

For ultimate torque and horsepower capacities, contact a Torque-Hub® representative.

### Speed Limitations

**Input Speed:** 3,000 RPM Maximum Intermittent

(Contact Fairfield for specific speed and horsepower information.)

### Weight

**Approximately** 1,460 lbs (660kg)

Note: Specific models will change weights.

### Model Formula

**S 50 B1 0 5 5 94 Z V**

**S – Torque-Hub® Spindle Output**

**50 – Series**

	Spindle		Hub	
	Flange Mounting Dia.	B.C.	Mounting Dia.	B.C.
<b>B1</b>	12.750 12.740	(12) 1 1/8-12 15.000 B.C.	19.000 18.990	(20) 3/4-10 21.900 B.C.

Note: Other models available. Please contact Fairfield.

**oerlikon**  
**fairfield**

Fairfield Manufacturing Company, Inc.  
First in Custom Gears and Drive Systems

www.fairfieldmfg.com

### Oil

Fill to half full with 90 weight gear lube with EP additive on most applications.

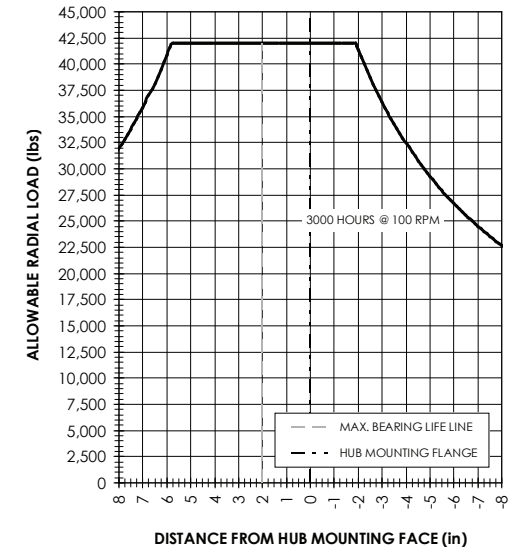
**Approximate Volume** 500oz. (15.6quarts)

Note: Oil level and type will vary with specific model and application.

### Conditions of Bearing Curve

Note: Contact Fairfield for Bearing Curve.

### Bearing Curve



DISTANCE FROM HUB MOUNTING FACE (in)

### Special Features

**V** – Viton Seals  
**Y** – Seal Boot

### Special Features

**Z** – Blank  
**R** – Redesigned Input Carrier

### Reduction

**94** - 93.59:1  
**103** - 102.92:1  
**135** - 134.77:1  
**149** - 148.90:1  
**182** - 181.84:1  
**214** - 214.41:1  
**289** - 289.29:1

### Input Cover Side

**5** – 13T, 8/16 Spline

### Input Spindle Side

**0** – Not Included  
**5** – 13T, 8/16 Spline

### Motor Mount Cover Side

**E** – S.A.E. "E" (6.505/6.502) Pilot 4 Bolt (9.000 B.C.) and 4 bolt (12.500 B.C.)  
**5** – S.A.E. "D" (6.005/6.002) Pilot 4 Bolt (9.000 B.C.)