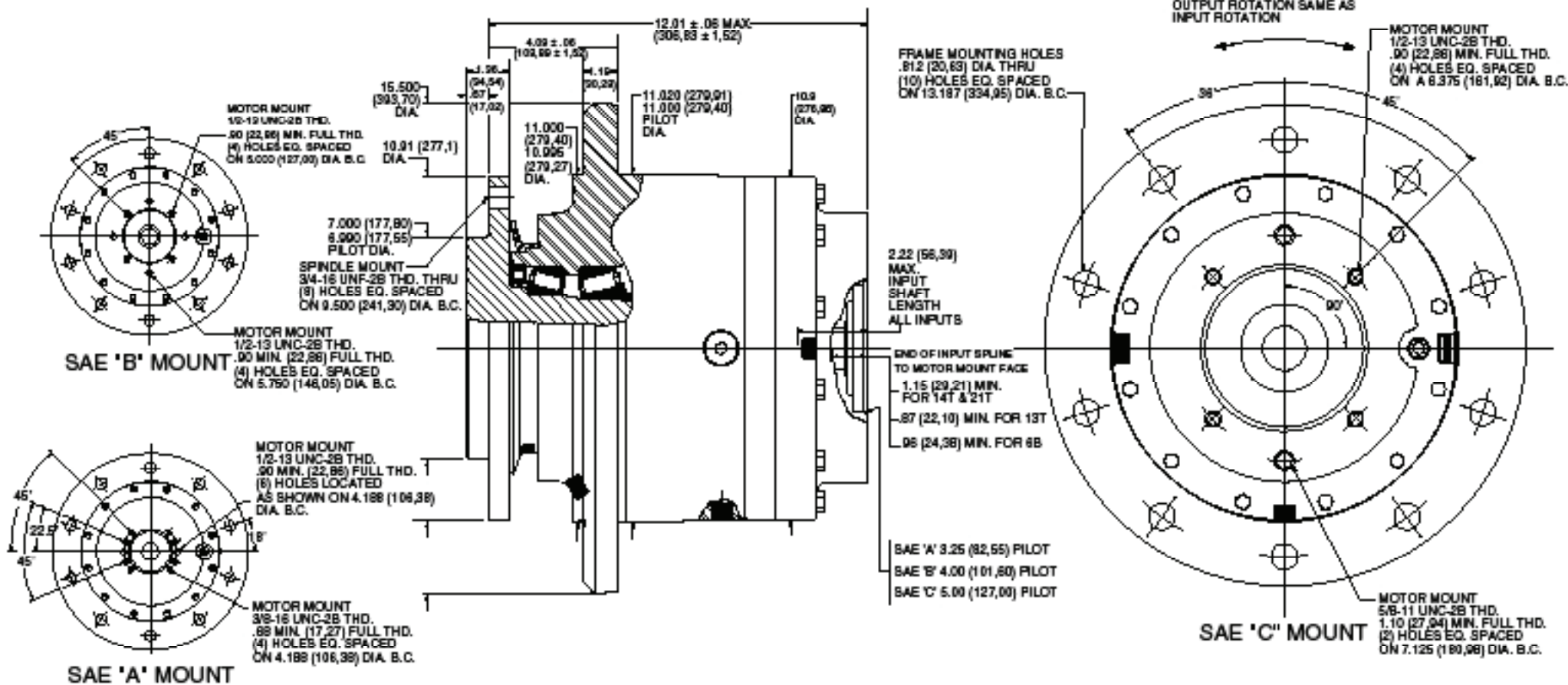


**TORQUE-HUB**  
Planetary Final Drives



**aerlikon**  
fairfield

Catalog prints are representative of the units.  
Before final design request a certified print from Fairfield.

NOTE: MM SHOWN IN ( )  
MOTOR CAVITY DIMENSIONS VARY WITH MODEL

OTHER MODELS ALSO AVAILABLE  
FAIRFIELD BRAKE AVAILABLE

## S3B8

### Performance Data

Continuous	Intermittent	Peak
37,500 lb-in	75,000 lb-in	100,000 lb-in
3,125 lb-ft	6,250 lb-ft	8,333 lb-ft
4,234 Nm	8,468 Nm	11,290 Nm
432 kg-m	864 kg-m	1,152 kg-m

For ultimate torque and horsepower capacities, contact a Torque-Hub® representative.

### Speed Limitations

**Input Speed:** 4,000 RPM Maximum Intermittent

### Weight

**Approximately** 225 lbs (102 kg)

Note: Specific models will change weights.

### S3B8 Model Formula

### Oil

Fill to half full with 90 weight gear lube with EP additive on most applications.

**Approximate Volume** 44 oz. (1,302 cm<sup>3</sup>)

Note: Oil level and type will vary with specific model and application.

### Conditions of Bearing Curve

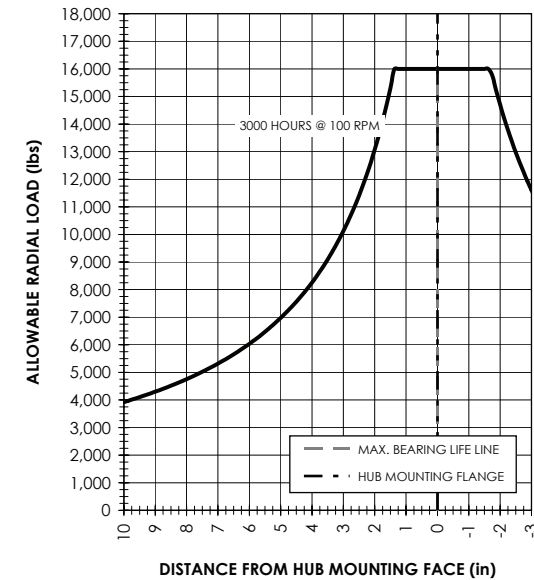
**Life** = 3,000 hours B-10

**Speed** = 100 RPM output

To adjust for loads and speeds other than shown on curve:

$$\text{Adjusted Life (hrs)} = 3,000 \left( \frac{100 \text{ RPM}}{\text{Speed (Adjusted)}} \right) \times \left( \frac{\text{Load (Curve)}}{\text{Load (Adjusted)}} \right)^{10/3}$$

### Bearing Curve



### S – Torque-Hub® Spindle Output

### 3 – Series

	Spindle		Hub	
	Flange Mounting Dia.	B.C.	Mounting Dia.	B.C.
B8	7.000 6.990	(8) 3/4 - 16 9.500 B.C.	11.020 11.000	(10) .828/.798 13.187 B.C.

**S 3 B8 3 3 44 Z B Y**

### Special Features

Y – Seal Boot

### Special Features

S – Studs in Spindle  
Z – Blank

### Special Features

B – Bronze Washers in Carrier

### Reduction

19 – 19.75:1  
25 – 24.43:1  
31 – 31.04:1  
36 – 35.49:1  
44 – 43.50:1  
51 – 51.54:1  
55 – 54.58:1

### Motor Mount

2 – S.A.E. "A" (3.255/3.251) Pilot  
4 Bolt and 6 Bolt  
3 – S.A.E. "B" (4.005/4.001) Pilot  
4 Bolt  
4 – S.A.E. "C" (5.005/5.001) Pilot  
2 Bolt and 4 Bolt

### Input

3 – 13T, 16/32 Spline  
4 – 14T, 12/24 Spline  
6 – 6 B Parallel Side Spline  
Major Dia.: 1.00 in.  
(for 31, 36, 51 and 55 ratios)  
7 – 21T, 16/32 Spline  
(available with "C" mount only)

**oerlikon**  
**fairfield**  
Fairfield Manufacturing Company, Inc.  
First in Custom Gears and Drive Systems  
www.fairfieldmfg.com

Torque-Hub is a registered trademark of Fairfield.  
© 2003 Fairfield Manufacturing Company, Inc.