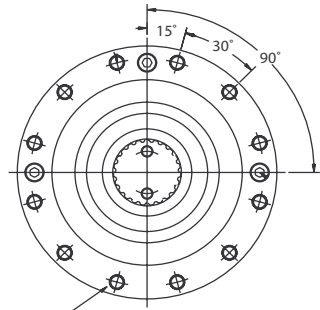
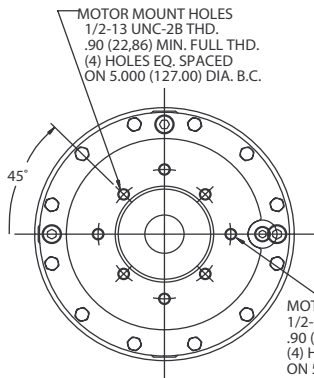


TORQUE-HUB®
Planetary Final Drives

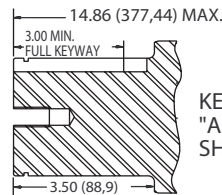
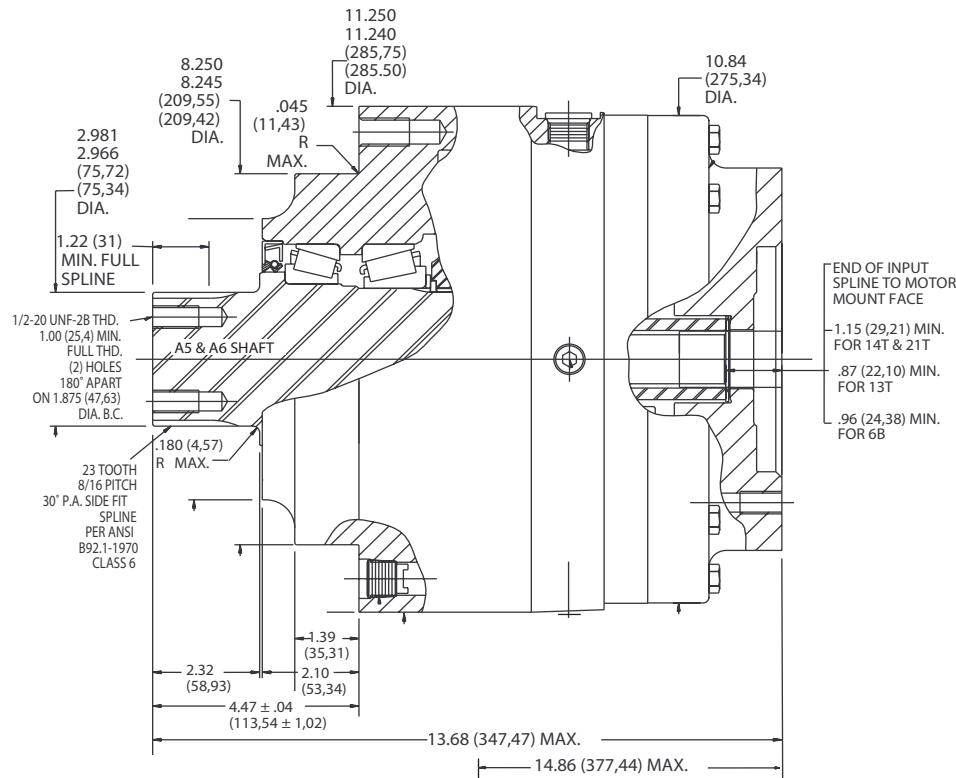


FRAME MOUNT HOLES
5/8-11 UNC-2B THD.
1.10 (27,94) MIN. FULL THD.
(12) HOLES EQ. SPACED
ON 10.10 (256,54) DIA. B.C.

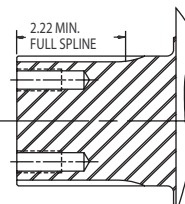


SAE "B" MOUNT
BACK END VIEW

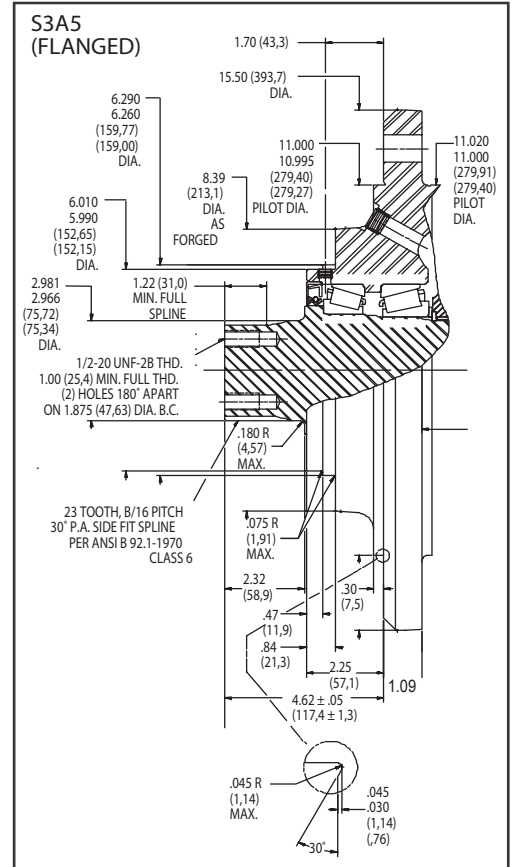
MOTOR MOUNT HOLES
1/2-13 UNC-2B THD.
.90 (22,86) MIN. FULL THD.
(4) HOLES EQ. SPACED
ON 5.750 (146,05) DIA. B.C.



KEYED SHAFT
"AA" AND "A4"
SHAFT VIEW



SPLINED SHAFT
"AB" FLANGED HUB
"AH" FLANGELESS HUB



NOTE: DIM. SHOWN IN ()
MOTOR CAVITY DIMENSIONS VARY WITH MODEL

OTHER MODELS ALSO AVAILABLE
FAIRFIELD BRAKE AVAILABLE

S3A

Performance Data

Continuous	Intermittent	Peak
37,500 lb-in	75,000 lb-in	100,000 lb-in
3,125 lb-ft	6,250 lb-ft	8,333 lb-ft
4,234 Nm	8,468 Nm	11,290 Nm
432 kg-m	864 kg-m	1,152 kg-m

For ultimate torque and horsepower capacities, contact a Torque-Hub® representative.

Speed Limitations

Input Speed: 4,000 RPM Maximum Intermittent

Weight

Approximately 195 lbs (88 kg)

Note: Specific models will change weights.

S3A6 Model Formula

S – Torque-Hub® Shaft Output

3 – Series

	Shaft	Hub	
		Hub Flange Thickness	Flange B.C.
A4	3.00" Dia. 5/8 Keyway	1.09"	(10) .828-.798 Holes 13.187 B.C.
A5	2.981" Dia. 23T, 8/16 Spline	1.09"	(10) .828-.798 Holes 13.187 B.C.
AB	2.981" Dia. 23T, 8/16 Spline	1.09"	(10) .828-.798 Holes 13.187 B.C.
A6	2.981" Dia. 23T, 8/16 Spline	No Flange	(12) 5/8-11 Holes 10.100 B.C.
AA	3.00" Dia. 5/8" Keyway	No Flange	(12) 5/8-11 Holes 10.100 B.C.
AH	2.981" Dia. 23T, 8/16 Spline	No Flange	(12) 5/8-11 Holes 10.100 B.C.

oerlikon
fairfield

Fairfield Manufacturing Company, Inc.

First in Custom Gears and Drive Systems

www.fairfieldmfg.com

Oil

Fill to half full with 90 weight gear lube with EP additive on most applications.

Approximate Volume 44 oz. (1,302 cm³)

Note: Oil level and type will vary with specific model and application.

Conditions of Bearing Curve

Life = 3,000 hours B-10

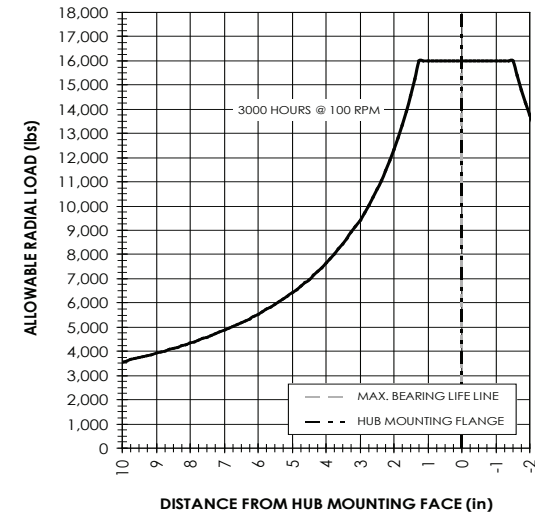
Speed = 100 RPM output

To adjust for loads and speeds other than shown on curve:

$$\text{Adjusted Life (hrs)} = 3,000 \left(\frac{100 \text{ RPM}}{\text{Speed (Adjusted)}} \right) \times \left(\frac{\text{Load (Curve)}}{\text{Load (Adjusted)}} \right)^{10/3}$$

S 3 A 6 3 3 55 Z B

Bearing Curve



Input

3 – 13T, 16/32 Spline

4 – 14T, 12/24 Spline

6 – 6B Parallel Side

Spline Major Dia. 1.00

Motor Mount

2 – S.A.E. "A" (3.255/3.251) Pilot
4-bolt and 6-bolt

3 – S.A.E. "B" (4.005/4.001) Pilot
(2) 2-bolt and 4-bolt

4 – S.A.E. "C" (5.005/5.001) Pilot
2-bolt and 4-bolt

Reduction

19 – 19.75:1

25 – 25.43:1

31 – 31.04:1

36 – 35.49:1

44 – 43.50:1

51 – 51.54:1

55 – 54.58:1

Torque-Hub is a registered trademark of Fairfield.
© 2003 Fairfield Manufacturing Company, Inc.