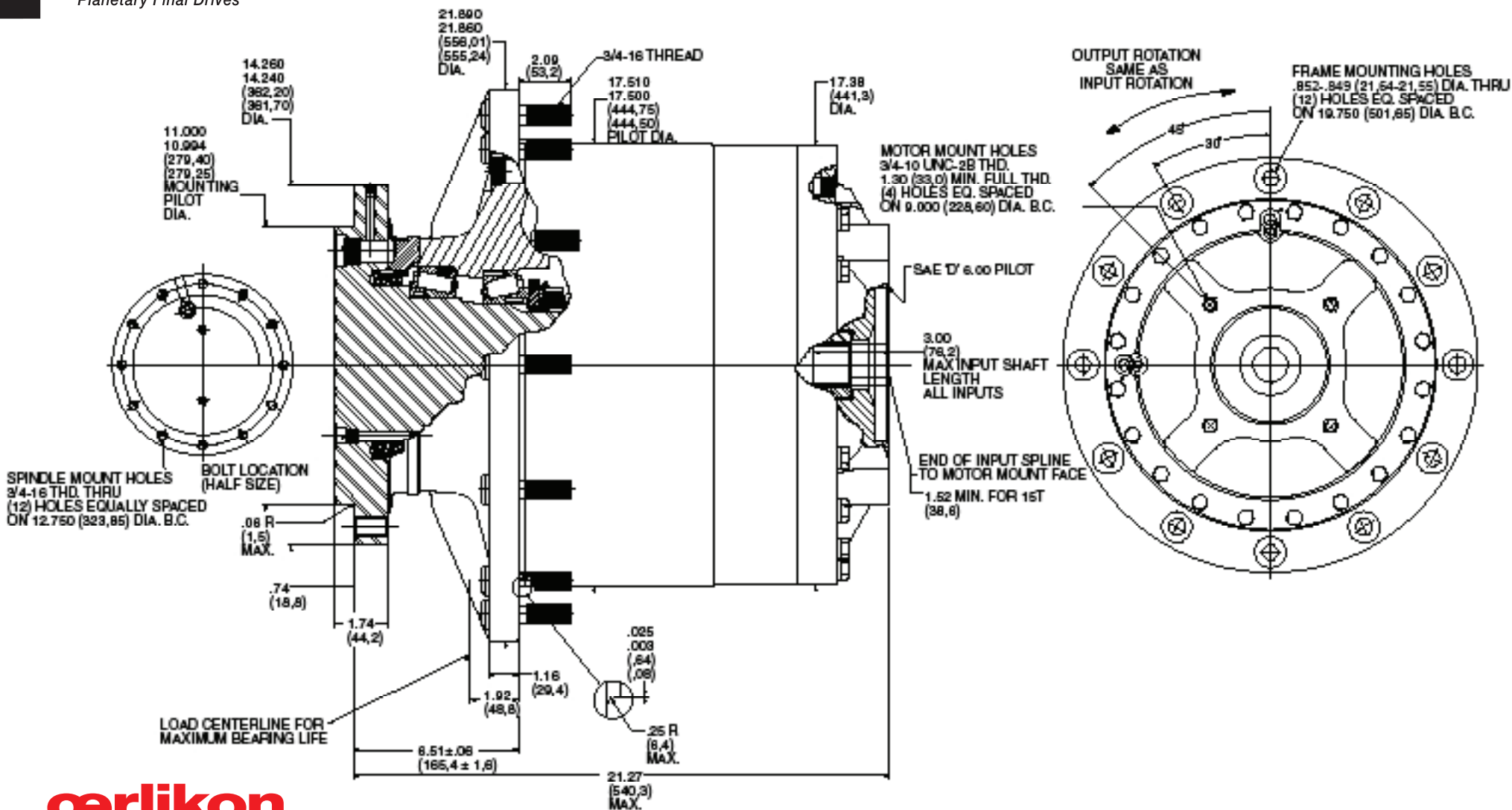


TORQUE-HUB®
Planetary Final Drives



oerlikon
fairfield

Catalog prints are representative of the units.
Before final design request a certified print from Fairfield.

NOTE: MM SHOWN IN ()
MOTOR CAVITY DIMENSIONS VARY WITH MODEL

OTHER MODELS ALSO AVAILABLE
FAIRFIELD BRAKE AVAILABLE

S25B4

Performance Data

Continuous	Intermittent	Peak
200,000 lb-in	400,000 lb-in	Contact Fairfield
16,666 ft-lb	33,333 ft-lb	
22,600 Nm	45,200 Nm	
2,300 Kg-m	4,600 Kg-m	

For ultimate torque and horsepower capacities, contact a Torque-Hub® representative.

Speed Limitations

Input Speed: 3,000 RPM Maximum Intermittent

Weight

Approximately 780 lbs (354 kg)

Note: Specific models will change weights.

S25B4 Model Formula

Oil

Fill to half full with 90 weight gear lube with EP additive on most applications.

Approximate Volume 228 oz. (7.12 quarts)

Note: Oil level and type will vary with specific model and application.

Conditions of Bearing Curve

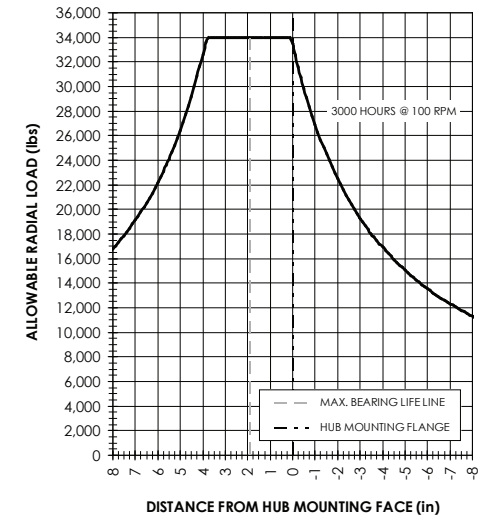
Life = 3,000 hours B-10

Speed = 100 RPM output

To adjust for loads and speeds other than shown on curve:

$$\text{Adjusted Life (hrs)} = 3,000 \left(\frac{100 \text{ RPM}}{\text{Speed (Adjusted)}} \right) \times \left(\frac{\text{Load (Curve)}}{\text{Load (Adjusted)}} \right)^{10/3}$$

Bearing Curve



S 25 B 4 0 5 5 5 2 9

S- Torque Hub Spindle Output

25- Series

	Spindle		Hub	
	Flange Mounting Dia.	B.C.	Mounting Dia.	Flange B.C.
B4	11.000 10.994	(12) 3/4-16 12.750 B.C.	17.510 17.500	(12).852-.848 19.750 B.C.

Reduction

19 – 18.95:1
29 – 29.08:1
36 – 36.00:1

Input Cover Side

5 – 13t, 8/16 Spline

Motor Mount Cover Side

5 – S.A.E. "D" (6.005/6.001) Pilot

Input Spindle Side

0 – Not Included
5 – 13T, 8/16 Spline

Studs

0 – Not Included
1 - 3/4 - 16 thd. by 2 - 17-32 inch
8 - 3/4 -16 thd. by 3- 1/4 inch

oerlikon
fairfield

Fairfield Manufacturing Company, Inc.

First in Custom Gears and Drive Systems

www.fairfieldmfg.com